



**TRANSPORTATION CABINET**

Frankfort, Kentucky 40622  
[www.transportation.ky.gov/](http://www.transportation.ky.gov/)

**Steven L. Beshear**  
Governor

**Michael W. Hancock, P.E.**  
Secretary

---

**MEMORANDUM**

---

**TO:** Patty Dunaway, P.E.  
Chief District Engineer  
District 4 - Elizabethtown

**ATTN:** Charlie Allen, P.E.

**FROM:** Keith Dotson *Keith Dotson*  
Assistant Director  
Acting Director  
Division of Planning

**DATE:** October 3, 2013

**SUBJECT:** Marion County Traffic Forecast  
KY 49 Improvements and Bridge Replacement  
Item No. 4-1076.00, 4-8707.00, 4-8708.00

In response to your February 28, 2013 request, we are providing the following forecasts on the attached report:

- 2013 and 2040 Average Daily Traffic and Design Hour Volume
- 2013 and 2040 Average Daily and Design Hour Truck Percent
- Truck Percentages and 20 year ESALs

If you have any questions, please contact Jonathan Reynolds, P.E. of this Division at (502) 782-5076.

KD/JR/BC

Attachments

c/att: Brad Eldridge  
Paul Looney  
John Moore  
Dan Hite  
Brad Bottoms  
Steve Ross



# *Executive Summary*

## **Traffic Forecast Report Marion County KY 49 Improvements and Bridge Replacement Item No. 4-1076.00, 4-8707.00, & 4-8708.00**

Prepared for:



Prepared by:  
**Jonathan Reynolds, PE**  
Division of Planning  
Kentucky Transportation Cabinet  
October 1, 2013

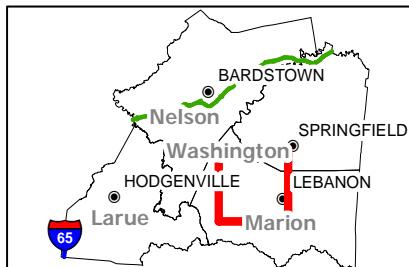
## **Table of Contents**

Figure 1: Vicinity Map .....Page #2  
 Executive Summary .....Page #3  
 Figure 2: Population Summary .....Page #5  
 Figure 3: Summary Map.....Page #6  
 20 Year ESAL Spreadsheets .....Page #7

## **Commonly Used Abbreviations and their Descriptions**

ADT	Average Daily Traffic	Without any adjustment
DHV	Design Hour Volume	30 <sup>th</sup> highest hour of a <u>year</u>
ESAL	Equivalent Single Axle Load	A measure of traffic's impact on roadway
%T	Truck Percentage	The percentage of trucks to total volume
FC	Functional Class	Refers to a road's importance
GR	Growth Rate	A value normally compounded annually
PHF	Peak Hour Factor	Considers a 15 minute spike in an hourly count
K-Factor	K-30 <sup>th</sup> hour Factor	DHV divided by ADT (DHV/ADT)
D-Factor	Directional Factor	Percentage of dominant flow to total
MP	Mile Point	Miles increase easterly and northerly
ATR	Automatic Traffic Recorder	A permanent & continuous recording station
KYSTM	Kentucky Statewide Model	A computerized representation of KY roads


# Vicinity Map




**KY 49 Improvements  
 and Bridge Replacement  
 Item #4-8707, 4-8708 & 4-1076**



**Legend**

 Project Location

0 0.5 1 2 Miles



**Traffic Forecast Executive Summary**  
**Marion County: KY 49 Improvements and Bridge Replacement**  
**Item No. 4-1076.00, 4-8707.00, & 4-8708.00**

**FORECAST SUMMARY**

The project calls for roadway improvements along KY 49 from Lebanon to Loretto and replacing the bridge over Hamilton Branch in Marion County. The purpose of this report is to analyze current and future traffic utilizing KY 49 between MP 18.698 and MP 27.540. District 4 requested traffic forecasts for the project road segment.

**FORECAST TYPE**

The following types of forecasts were developed:

- 2013 and 2040 ADT and DHV values
- 2013 and 2040 Average Daily and Design Hourly Truck Percent Forecasts
- 20-year ESALs

**BASE-YEAR VOLUMES**

The 2013 ADT volume is based on the most current 48-hour counts collected at traffic station 078A84 (MP 18.6), 078507 (MP 21.7), 078782 (MP 25.6) and 078795 (MP 27.3) all on KY 49. All figures are subject to rounding.

**DESIGN-YEAR/GROWTH FACTORS**

While the Kentucky State Data Center predicts population growth in Marion County between now and 2035 to be 0.64% annually (see page 5), exponential growth analyses performed on historical data from traffic stations along KY 49 have been growing 1.0% annually. Therefore, a 1.0% growth rate was used for the purposes of this forecast.

**DESIGN HOUR FACTORS**

DHVs were estimated by analyzing the most recent hourly volume data collected at stations 078A84, 078507, 078782, and 078795 on KY 49. The peak AM and PM volumes were derived by dividing the highest hourly volumes from these counts by their daily totals. Functional class design hour factors based on the day and month of these counts were then applied. Finally the calculated K-factors were used in combination with the ADT forecast to produce DHVs for 2013 and 2040.

### **TRUCK PERCENTAGE**

A 2013 class count at station 078507 provided the basis of a 7.0% truck percentage for KY 49. Statewide research indicates a 1.0% annual growth rate for %T as the trend for the truck component of overall traffic on rural major collector roads statewide.

### **ESALs**

Functional class averages from ATR data, traffic counts, and the 2040 ADT projections were used to estimate 20-year ESALs on the project road segment. The 2007 aggregated ESAL report, generated by the Kentucky Transportation Center in collaboration with the Kentucky Transportation Cabinet, were used to grow the important ESAL calculation variables. For more information please see the attached ESAL calculation sheets.

### **TURN MOVEMENTS**

Turn movements were not requested and therefore not included.

Traffic Forecast Technical Report  
 Marion County: KY 49 Improvements and Bridge Replacement  
 Item No. 4-1076.00, 4-8707.00, & 4-8708.00

**HISTORICAL POPULATION SUMMARY**

	1960	1970	1980	1990	2000	2010	60 - 70	70 - 80	80 - 90	90 - 00	00 - 10
Population	3,038,156	3,220,711	3,660,334	3,686,892	4,041,769	4,339,367	Pct Change 6.0%	Pct Change 13.6%	Pct Change 0.7%	Pct Change 9.6%	Pct Change 7.4%
Marion Co	-	16,714	17,910	16,499	18,212	19,820	-	7.2%	-7.9%	10.4%	8.8%

Sources: US Bureau of the Census; Kentucky State Data Center

**FUTURE POPULATION PROJECTIONS SUMMARY**

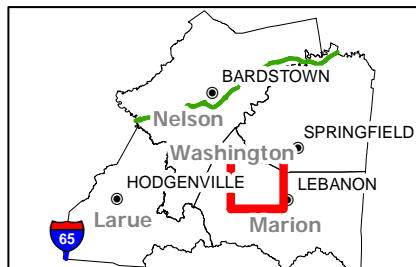
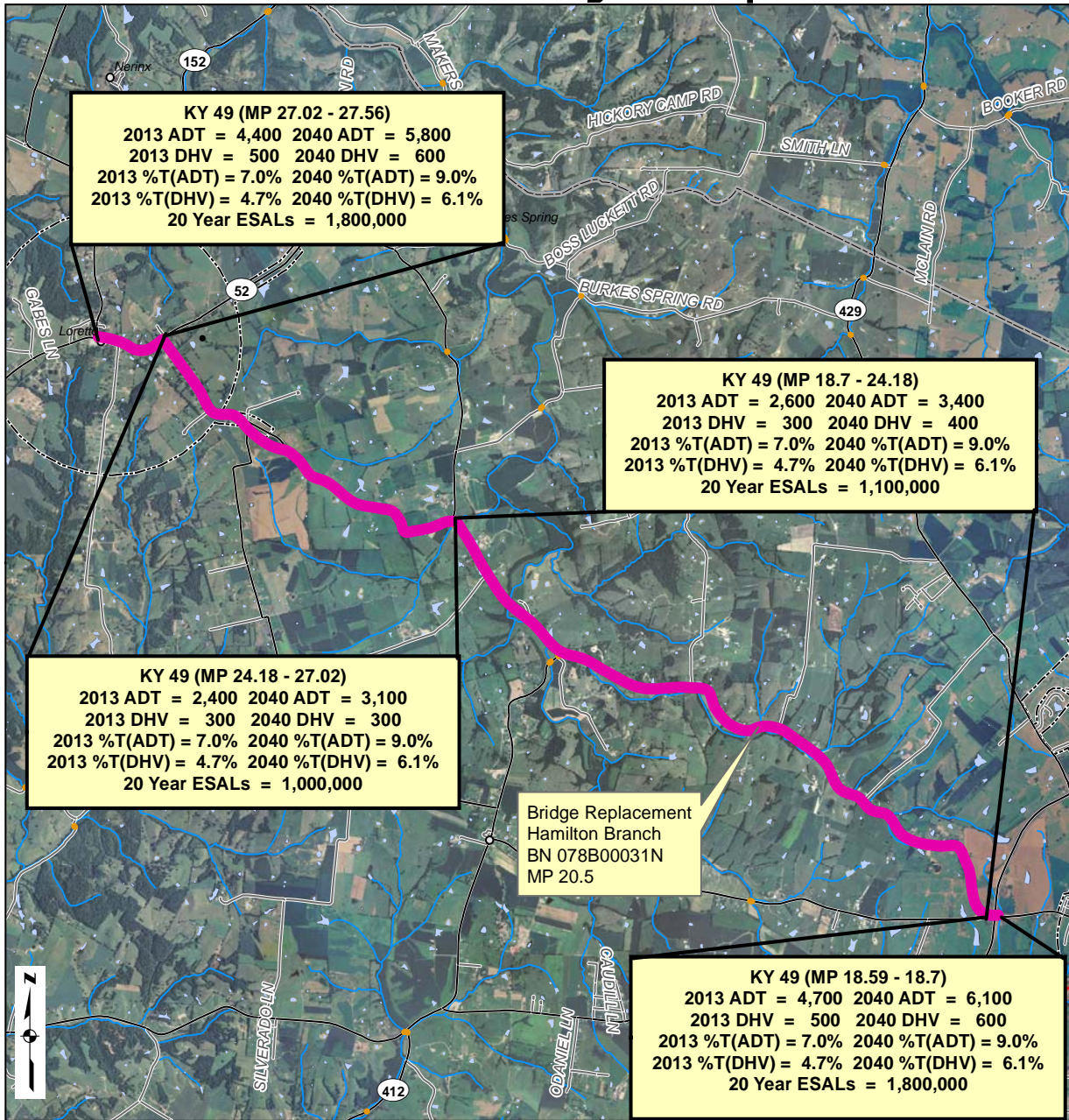
	2010	2015	2020	2025	2030	2035	10 - 15	15 - 20	20 - 25	25 - 30	30 - 35
Projection	4,339,367	4,509,429	4,672,754	4,820,390	4,951,178	5,063,331	Pct Change 3.9%	Pct Change 3.6%	Pct Change 3.2%	Pct Change 2.7%	Pct Change 2.3%
Marion Co	19,820	20,637	21,424	22,152	22,757	23,256	4.1%	3.8%	3.4%	2.7%	2.2%

Sources: US Bureau of the Census; Kentucky State Data Center

**ANNUAL POPULATION GROWTH RATES FROM HISTORICAL DATA AND PROJECTIONS**

	60 - 70	70 - 80	80 - 90	90 - 00	05 - 10	10 - 15	15 - 20	20 - 25	25 - 30	10 - 30
GR	0.59%	1.29%	0.07%	0.92%	0.77%	0.71%	0.62%	0.54%	0.45%	0.53%
Marion Co	-	0.69%	-0.82%	0.99%	0.81%	0.75%	0.67%	0.54%	0.43%	0.56%

# Summary Map



**KY 49 Improvements  
 and Bridge Replacement  
 Item #4-8707, 4-8708 & 4-1076**



**Legend**

Project Location



*Traffic Forecast Technical Report  
 Marion County: KY 49 Improvements and Bridge Replacement  
 Item No. 4-1076.00, 4-8707.00, & 4-8708.00*

**FORECAST OF EQUIVALENT SINGLE AXLE LOAD ACCUMULATIONS (20-year)**

**ROUTE ID:**

County	Marion	Date	08/28/13
Road Name	Loretto Rd	Forecaster	Jonathan Reynolds
Functional Class	16 - Urban Minor Arterial	MARS No.	8685901D
Project Description	Corridor Study KY 49	Item No.	4-8707.00
Scenario	Build	Route No.	KY 49
Segment Description	KY 84 - KY 2154	Beg. MP	18.59
		End MP	18.7
		T.F. No.	13.013
		No. of Lanes	2
		1 or 2 way	2

**REFERENCES:**

Previous Forecasts	none	K- Factor Value	10.1%
Traffic Volume	078A84	K-Factor Source	078A84
Milepoint	18.645	PHF	0.9
Truck Percent	078507	Full Route Unique Identifier	
Milepoint	21.4		078-KY-0049 -000
ESAL Information	2007 Aggregated ESALS		
Growth Rate	1.00%		

**TRAFFIC PARAMETERS:**

		Present Year 2013	Growth Rate	Construction Year 2020	Median Year 2030	Design Year 2040
Volume	(AADT)	4700	1.00%	5000	5600	6100
Percent Trucks	(%T)	7.0%	1.0%	8%	8%	9%
Number of Trucks		330	2.0%	380	450	550
Percent Trucks Hauling Coal	(%CT)	0%	0.0%	0%	0%	0%
<i>Non-Coal Trucks:</i>						
Axles/Truck	(A/T)	2.900	1.00%	3.109	3.434	3.794
ESALs/Axle	(ESAL/A)	0.200	2.00%	0.230	0.280	0.341
<i>Coal Trucks:</i>						
Axles/Truck	(A/CT)	0	0.00%	0.000	0.000	0.000
ESALs/Axle	(ESAL/CA)	0	0.00%	0.000	0.000	0.000

**ESAL CALCULATIONS:** SEE ATTACHED ESAL CALCULATION SHEET

Design ESALs in Critical Lane 1,800,000

General Comments:

Traffic Forecast Technical Report  
 Marion County: KY 49 Improvements and Bridge Replacement  
 Item No. 4-1076.00, 4-8707.00, & 4-8708.00

**KY 84 - KY 2154 (Build)**

Year	ADT	Car %	Truck %	Cars	Trucks	CT%	AXT	ESAL/AX	AX/CT	ESAL/CA	LDF	ESALS
2020	5,039	92.5%	7.5%	4661	378	0.00%	3.11	0.23	0	0	0.500	53,552
2021	5,089	92.4%	7.6%	4704	386	0.00%	3.14	0.23	0	0	0.500	56,101
2022	5,140	92.3%	7.7%	4747	394	0.00%	3.17	0.24	0	0	0.500	58,777
2023	5,192	92.3%	7.7%	4790	401	0.00%	3.20	0.24	0	0	0.500	61,589
2024	5,244	92.2%	7.8%	4834	410	0.00%	3.24	0.25	0	0	0.500	64,542
2025	5,296	92.1%	7.9%	4878	418	0.00%	3.27	0.25	0	0	0.500	67,643
2026	5,349	92.0%	8.0%	4923	426	0.00%	3.30	0.26	0	0	0.500	70,900
2027	5,403	92.0%	8.0%	4968	435	0.00%	3.33	0.26	0	0	0.500	74,322
2028	5,457	91.9%	8.1%	5013	443	0.00%	3.37	0.27	0	0	0.500	77,916
2029	5,511	91.8%	8.2%	5059	452	0.00%	3.40	0.27	0	0	0.500	81,691
2030	5,566	91.7%	8.3%	5105	461	0.00%	3.43	0.28	0	0	0.500	85,657
2031	5,622	91.6%	8.4%	5151	471	0.00%	3.47	0.29	0	0	0.500	89,823
2032	5,678	91.5%	8.5%	5198	480	0.00%	3.50	0.29	0	0	0.500	94,199
2033	5,735	91.5%	8.5%	5245	490	0.00%	3.54	0.30	0	0	0.500	98,796
2034	5,792	91.4%	8.6%	5293	500	0.00%	3.57	0.30	0	0	0.500	103,625
2035	5,850	91.3%	8.7%	5340	510	0.00%	3.61	0.31	0	0	0.500	108,698
2036	5,909	91.2%	8.8%	5389	520	0.00%	3.65	0.32	0	0	0.500	114,027
2037	5,968	91.1%	8.9%	5437	530	0.00%	3.68	0.32	0	0	0.500	119,626
2038	6,027	91.0%	9.0%	5486	541	0.00%	3.72	0.33	0	0	0.500	125,508
2039	6,088	90.9%	9.1%	5536	552	0.00%	3.76	0.33	0	0	0.500	131,688
2040	6,149	90.8%	9.2%	5586	563	0.00%	3.79	0.34	0	0	0.500	138,180

5-yr ESALS  
300,000

10-yr ESALS  
700,000

15-yr ESALS  
1,200,000

20-yr ESALS  
1,800,000

*Traffic Forecast Technical Report  
 Marion County: KY 49 Improvements and Bridge Replacement  
 Item No. 4-1076.00, 4-8707.00, & 4-8708.00*

**FORECAST OF EQUIVALENT SINGLE AXLE LOAD ACCUMULATIONS (20-year)**

**ROUTE ID:**

County	Marion
Road Name	Loretto Rd
Functional Class	7 - Rural Major Collector
Project Description	Corridor Study KY 49 & Bridge Replacement over Hamilton
Scenario	Build
Segment Description	KY 84 - KY 52 & Bridge over Hamilton Branch

Date	08/28/13
Forecaster	Jonathan Reynolds
MARS No.	8685901D
Item No.	4-8707 & 4-1076
Route No.	KY 49
Beg. MP	18.7
End MP	24.18
T.F. No.	13.013 & 13.025
No. of Lanes	2
1 or 2 way	2

**REFERENCES:**

Previous Forecasts	none
Traffic Volume	078507
Milepoint	21.4
Truck Percent	078507
Milepoint	21.4
ESAL Information	2007 Aggregated ESALS
Growth Rate	1.00%

K- Factor Value	11.0%
K-Factor Source	078507
PHF	0.9

Full Route Unique Identifier  
 078-KY-0049-000

**TRAFFIC PARAMETERS:**

		Present Year	Growth Rate	Construction Year	Median Year	Design Year
		2013		2020	2030	2040
Volume	(AADT)	2600	1.00%	2800	3100	3400
Percent Trucks	(%T)	7.0%	1.0%	8%	8%	9%
Number of Trucks		180	2.0%	210	250	310
Percent Trucks Hauling Coal	(%CT)	0%	0.0%	0%	0%	0%
<i>Non-Coal Trucks:</i>						
Axles/Truck	(A/T)	2.900	0.70%	3.045	3.265	3.501
ESALs/Axle	(ESAL/A)	0.245	1.60%	0.274	0.321	0.376
<i>Coal Trucks:</i>						
Axles/Truck	(A/CT)	0	0.00%	0.000	0.000	0.000
ESALs/Axle	(ESAL/CA)	0	0.00%	0.000	0.000	0.000

**ESAL CALCULATIONS:** SEE ATTACHED ESAL CALCULATION SHEET

Design ESALs in Critical Lane 1,100,000

General Comments:

Traffic Forecast Technical Report  
 Marion County: KY 49 Improvements and Bridge Replacement  
 Item No. 4-1076.00, 4-8707.00, & 4-8708.00

**KY 84 - KY 52 & Bridge over Hamilton Branch (Build)**

Year	ADT	Car %	Truck %	Cars	Trucks	CT%	AXIT	ESAL/AX	AX/CT	ESAL/CA	LDF	ESALS
2020	2,788	92.5%	7.5%	2578	209	0.00%	3.05	0.27	0	0	0.500	34,184
2021	2,815	92.4%	7.6%	2602	213	0.00%	3.07	0.28	0	0	0.500	35,596
2022	2,844	92.3%	7.7%	2626	218	0.00%	3.09	0.28	0	0	0.500	37,069
2023	2,872	92.3%	7.7%	2650	222	0.00%	3.11	0.29	0	0	0.500	38,605
2024	2,901	92.2%	7.8%	2674	227	0.00%	3.13	0.29	0	0	0.500	40,208
2025	2,930	92.1%	7.9%	2699	231	0.00%	3.15	0.30	0	0	0.500	41,880
2026	2,959	92.0%	8.0%	2723	236	0.00%	3.18	0.30	0	0	0.500	43,624
2027	2,989	92.0%	8.0%	2748	240	0.00%	3.20	0.31	0	0	0.500	45,444
2028	3,019	91.9%	8.1%	2773	245	0.00%	3.22	0.31	0	0	0.500	47,342
2029	3,049	91.8%	8.2%	2798	250	0.00%	3.24	0.32	0	0	0.500	49,322
2030	3,079	91.7%	8.3%	2824	255	0.00%	3.27	0.32	0	0	0.500	51,388
2031	3,110	91.6%	8.4%	2850	260	0.00%	3.29	0.33	0	0	0.500	53,543
2032	3,141	91.5%	8.5%	2875	266	0.00%	3.31	0.33	0	0	0.500	55,792
2033	3,172	91.5%	8.5%	2902	271	0.00%	3.33	0.34	0	0	0.500	58,138
2034	3,204	91.4%	8.6%	2928	276	0.00%	3.36	0.34	0	0	0.500	60,586
2035	3,236	91.3%	8.7%	2954	282	0.00%	3.38	0.35	0	0	0.500	63,139
2036	3,269	91.2%	8.8%	2981	288	0.00%	3.40	0.35	0	0	0.500	65,803
2037	3,301	91.1%	8.9%	3008	293	0.00%	3.43	0.36	0	0	0.500	68,583
2038	3,334	91.0%	9.0%	3035	299	0.00%	3.45	0.36	0	0	0.500	71,484
2039	3,368	90.9%	9.1%	3062	305	0.00%	3.48	0.37	0	0	0.500	74,510
2040	3,401	90.8%	9.2%	3090	311	0.00%	3.50	0.38	0	0	0.500	77,667

5-yr ESALS  
200,000

10-yr ESALS  
400,000

15-yr ESALS  
700,000

20-yr ESALS  
1,100,000

*Traffic Forecast Technical Report  
 Marion County: KY 49 Improvements and Bridge Replacement  
 Item No. 4-1076.00, 4-8707.00, & 4-8708.00*

**FORECAST OF EQUIVALENT SINGLE AXLE LOAD ACCUMULATIONS (20-year)**

**ROUTE ID:**

County	Marion
Road Name	Loretto Rd
Functional Class	7 - Rural Major Collector
Project Description	Corridor Study KY 49
Scenario	Build
Segment Description	KY 52 - KY 52

Date	09/28/13
Forecaster	Jonathan Reynolds
MARS No.	8685901D
Item No.	4-8707.00
Route No.	KY 49
Beg. MP	24.18
End MP	27.02
T.F. No.	13.013
No. of Lanes	2
1 or 2 way	2

**REFERENCES:**

Previous Forecasts	none
Traffic Volume	078782
Milepoint	25.6
Truck Percent	078507
Milepoint	21.4
ESAL Information	2007 Aggregated ESALS
Growth Rate	1.00%

K- Factor Value	11.0%
K-Factor Source	078782
PHF	0.9
Full Route Unique Identifier	
078-KY-0049 -000	

**TRAFFIC PARAMETERS:**

		Present Year <b>2013</b>	Growth Rate	Construction Year <b>2020</b>	Median Year <b>2030</b>	Design Year <b>2040</b>
Volume	(AADT)	2400	1.00%	2600	2800	3100
Percent Trucks	(%T)	7.0%	1.0%	8%	8%	9%
Number of Trucks		170	2.0%	200	220	280
Percent Trucks Hauling Coal	(%CT)	0%	0.0%	0%	0%	0%
<i>Non-Coal Trucks:</i>						
Axles/Truck	(A/T)	2.900	0.70%	3.045	3.265	3.501
ESALs/Axle	(ESAL/A)	0.245	1.60%	0.274	0.321	0.376
<i>Coal Trucks:</i>						
Axles/Truck	(A/CT)	0	0.00%	0.000	0.000	0.000
ESALs/Axle	(ESAL/CA)	0	0.00%	0.000	0.000	0.000

**ESAL CALCULATIONS:** SEE ATTACHED ESAL CALCULATION SHEET

Design ESALs in Critical Lane

General Comments:

Traffic Forecast Technical Report  
 Marion County: KY 49 Improvements and Bridge Replacement  
 Item No. 4-1076.00, 4-8707.00, & 4-8708.00

**KY 52 - KY 52 (Build)**

Year	ADT	Car %	Truck %	Cars	Trucks	CT%	AXIT	ESAL/AX	AX/CT	ESAL/CA	LDF	ESALS
2020	2,573	92.5%	7.5%	2380	193	0.00%	3.05	0.27	0	0	0.500	31,555
2021	2,599	92.4%	7.6%	2402	197	0.00%	3.07	0.28	0	0	0.500	32,858
2022	2,625	92.3%	7.7%	2424	201	0.00%	3.09	0.28	0	0	0.500	34,218
2023	2,651	92.3%	7.7%	2446	205	0.00%	3.11	0.29	0	0	0.500	35,636
2024	2,678	92.2%	7.8%	2468	209	0.00%	3.13	0.29	0	0	0.500	37,115
2025	2,704	92.1%	7.9%	2491	213	0.00%	3.15	0.30	0	0	0.500	38,659
2026	2,731	92.0%	8.0%	2514	218	0.00%	3.18	0.30	0	0	0.500	40,268
2027	2,759	92.0%	8.0%	2537	222	0.00%	3.20	0.31	0	0	0.500	41,948
2028	2,786	91.9%	8.1%	2560	226	0.00%	3.22	0.31	0	0	0.500	43,700
2029	2,814	91.8%	8.2%	2583	231	0.00%	3.24	0.32	0	0	0.500	45,528
2030	2,842	91.7%	8.3%	2607	236	0.00%	3.27	0.32	0	0	0.500	47,435
2031	2,871	91.6%	8.4%	2630	240	0.00%	3.29	0.33	0	0	0.500	49,425
2032	2,899	91.5%	8.5%	2654	245	0.00%	3.31	0.33	0	0	0.500	51,500
2033	2,928	91.5%	8.5%	2678	250	0.00%	3.33	0.34	0	0	0.500	53,666
2034	2,958	91.4%	8.6%	2703	255	0.00%	3.36	0.34	0	0	0.500	55,925
2035	2,987	91.3%	8.7%	2727	260	0.00%	3.38	0.35	0	0	0.500	58,282
2036	3,017	91.2%	8.8%	2752	266	0.00%	3.40	0.35	0	0	0.500	60,742
2037	3,047	91.1%	8.9%	2777	271	0.00%	3.43	0.36	0	0	0.500	63,308
2038	3,078	91.0%	9.0%	2802	276	0.00%	3.45	0.36	0	0	0.500	65,985
2039	3,109	90.9%	9.1%	2827	282	0.00%	3.48	0.37	0	0	0.500	68,778
2040	3,140	90.8%	9.2%	2852	288	0.00%	3.50	0.38	0	0	0.500	71,693

5-yr ESALS  
200,000

10-yr ESALS  
400,000

15-yr ESALS  
700,000

20-yr ESALS  
1,000,000

*Traffic Forecast Technical Report  
Marion County: KY 49 Improvements and Bridge Replacement  
Item No. 4-1076.00, 4-8707.00, & 4-8708.00*

**FORECAST OF EQUIVALENT SINGLE AXLE LOAD ACCUMULATIONS (20-year)**

**ROUTE ID:**

County	Marion	Date	08/28/13
Road Name	Loretto Rd	Forecaster	Jonathan Reynolds
Functional Class	7 - Rural Major Collector	MARS No.	8685901D
Project Description	Corridor Study KY 49 & Road Improvements from KY 52 to W Marion Elem	Item No.	4-8707 & 4-8708
Scenario	Build	Route No.	KY 49
Segment Description	KY 52 - KY 152	Beg. MP	27.02
		End MP	27.56
		T.F. No.	13.013 & 13.040
		No. of Lanes	2
		1 or 2 way	2

**REFERENCES:**

Previous Forecasts	none	K- Factor Value	11.0%
Traffic Volume	078795	K-Factor Source	078795
Milepoint	27.3	PHF	0.9
Truck Percent	078507	Full Route Unique Identifier	
Milepoint	21.4		078-KY-0049 -000
ESAL Information	2007 Aggregated ESALS		
Growth Rate	1.00%		

**TRAFFIC PARAMETERS:**

		Present Year	Growth Rate	Construction Year	Median Year	Design Year
		2013		2020	2030	2040
Volume	(AADT)	4400	1.00%	4700	5200	5800
Percent Trucks	(%T)	7.0%	1.0%	8%	8%	9%
Number of Trucks		310	2.0%	350	420	520
Percent Trucks Hauling Coal	(%CT)	0%	0.0%	0%	0%	0%
<i>Non-Coal Trucks:</i>						
Axles/Truck	(A/T)	2.900	0.70%	3.045	3.265	3.501
ESALs/Axle	(ESAL/A)	0.245	1.60%	0.274	0.321	0.376
<i>Coal Trucks:</i>						
Axles/Truck	(A/CT)	0	0.00%	0.000	0.000	0.000
ESALs/Axle	(ESAL/CA)	0	0.00%	0.000	0.000	0.000

**ESAL CALCULATIONS:** SEE ATTACHED ESAL CALCULATION SHEET

Design ESALs in Critical Lane 1,800,000

General Comments:

Traffic Forecast Technical Report  
 Marion County: KY 49 Improvements and Bridge Replacement  
 Item No. 4-1076.00, 4-8707.00, & 4-8708.00

KY 52 - KY 152 (Build)												
Year	ADT	Car %	Truck %	Cars	Trucks	C.T%	AX/T	ESAL/AX	AX/CT	ESAL/JCA	LDF	ESALS
2020	4,717	92.5%	7.5%	4363	354	0.00%	3.05	0.27	0	0	0.500	57,851
2021	4,765	92.4%	7.6%	4403	361	0.00%	3.07	0.28	0	0	0.500	60,240
2022	4,812	92.3%	7.7%	4444	368	0.00%	3.09	0.28	0	0	0.500	62,732
2023	4,860	92.3%	7.7%	4485	376	0.00%	3.11	0.29	0	0	0.500	65,332
2024	4,909	92.2%	7.8%	4526	383	0.00%	3.13	0.29	0	0	0.500	68,045
2025	4,958	92.1%	7.9%	4567	391	0.00%	3.15	0.30	0	0	0.500	70,874
2026	5,008	92.0%	8.0%	4609	399	0.00%	3.18	0.30	0	0	0.500	73,826
2027	5,058	92.0%	8.0%	4651	407	0.00%	3.20	0.31	0	0	0.500	76,905
2028	5,108	91.9%	8.1%	4693	415	0.00%	3.22	0.31	0	0	0.500	80,117
2029	5,159	91.8%	8.2%	4736	423	0.00%	3.24	0.32	0	0	0.500	83,468
2030	5,211	91.7%	8.3%	4779	432	0.00%	3.27	0.32	0	0	0.500	86,964
2031	5,263	91.6%	8.4%	4822	441	0.00%	3.29	0.33	0	0	0.500	90,612
2032	5,316	91.5%	8.5%	4866	450	0.00%	3.31	0.33	0	0	0.500	94,417
2033	5,369	91.5%	8.5%	4910	459	0.00%	3.33	0.34	0	0	0.500	98,387
2034	5,423	91.4%	8.6%	4955	468	0.00%	3.36	0.34	0	0	0.500	102,529
2035	5,477	91.3%	8.7%	5000	477	0.00%	3.38	0.35	0	0	0.500	106,851
2036	5,532	91.2%	8.8%	5045	487	0.00%	3.40	0.35	0	0	0.500	111,360
2037	5,587	91.1%	8.9%	5090	497	0.00%	3.43	0.36	0	0	0.500	116,064
2038	5,643	91.0%	9.0%	5136	507	0.00%	3.45	0.36	0	0	0.500	120,972
2039	5,699	90.9%	9.1%	5182	517	0.00%	3.48	0.37	0	0	0.500	126,093
2040	5,756	90.8%	9.2%	5229	527	0.00%	3.50	0.38	0	0	0.500	131,437

5-yr ESALS  
300,000

10-yr ESALS  
700,000

15-yr ESALS  
1,200,000

20-yr ESALS  
1,800,000