

PENNYRILE AREA DEVELOPMENT DISTRICT

KY 139/KY 276 Corridors I-24 Detour Study

Trigg County

Socioeconomic Report

DRAFT

June 2025

Prepared for

Kentucky Transportation Cabinet (KYTC) – Division of Planning

This document was prepared in cooperation with the Kentucky Transportation Cabinet



Prepared by the

Pennyrile Area Development District



[This page intentionally left blank]

Contents

Introduction	5
Methodology	7
Study Findings	
Population by Persons of Racial Minority Origin	8
Population by Persons Age 65 Years and Older	10
Population by Disability Status	12
Population by Persons with Limited English	14
Proficiency Population by Persons Below Poverty Level	16
Conclusion	18

[This page intentionally left blank]

Introduction

This report presents an overview of the findings for selected socioeconomic characteristics in the KY 139/KY 276 Corridors I-24 Detour Study Planning Study in Trigg County, Kentucky. The purpose of the study is to find ways to help improve traffic flow through Trigg County in the event that I-24 is closed temporarily. The study will focus primarily on Trigg County and a small portion of Caldwell County, which includes segments of KY 139 and KY 276 in Trigg and Caldwell Counties.

The information in this report outlines 2019-2023 American Community Survey (ACS) statistics in and near the project area using tables, charts, and maps. The data presented in this document is intended to highlight areas of concern that will require additional analysis should any project be advanced to future phases. Statistics are provided for minority, elderly, poverty status, limited English proficiency (LEP), and disabled populations for the nation, state, counties and block groups located within the project area.

This information is intended to aid the Kentucky Transportation Cabinet (KYTC) in making informed and prudent transportation decisions in the project area.

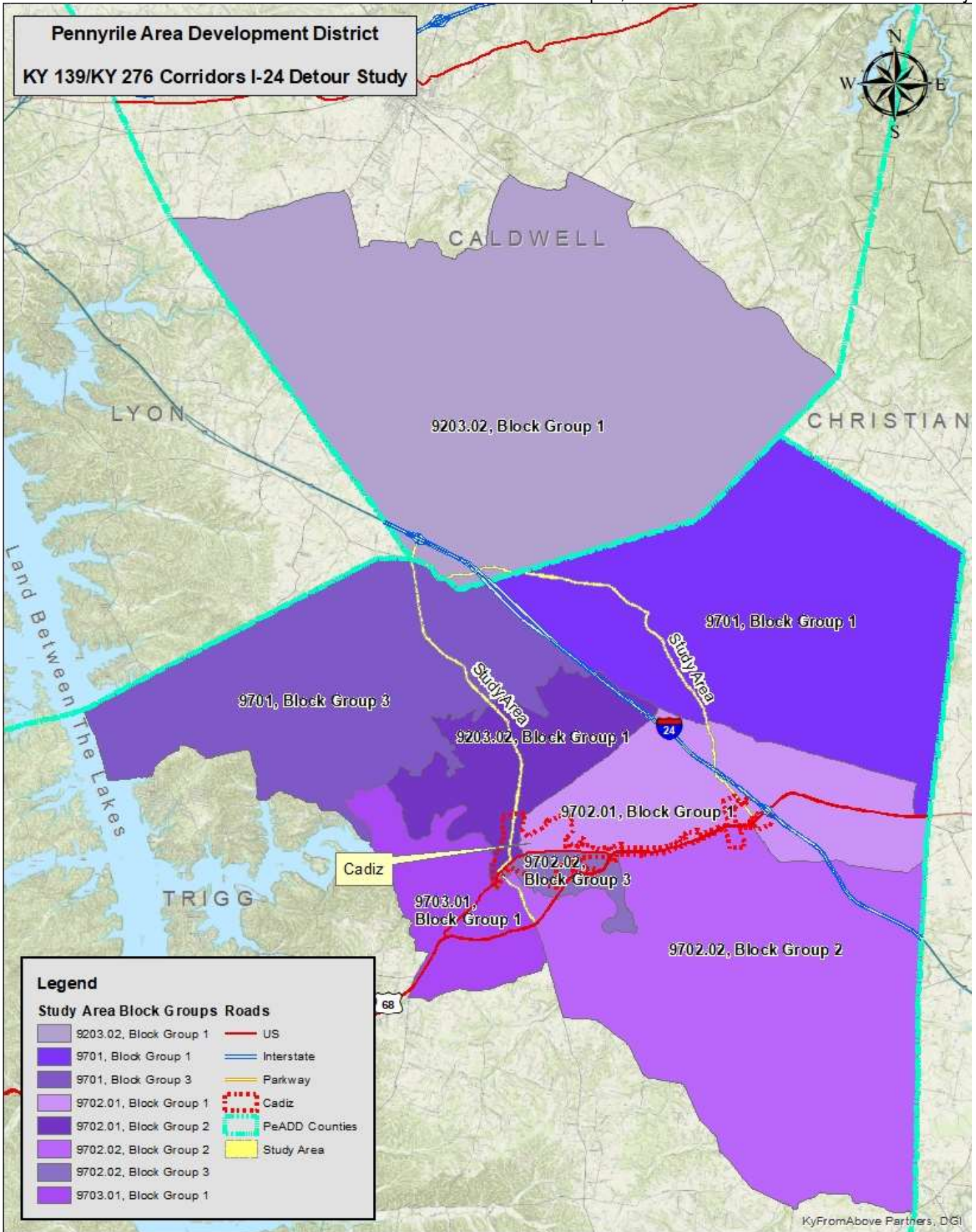
The planning study area is composed of the following Census Tract (CT) Block Groups (BG):

- Trigg County Census Tract 9701, Block Group 1
- Trigg County Census Tract 9701, Block Group 3
- Trigg County Census Tract 9702.01, Block Group 1
- Trigg County Census Tract 9702.01, Block Group 2
- Trigg County Census Tract 9702.02, Block Group 2
- Trigg County Census Tract 9702.02, Block Group 3
- Trigg County Census Tract 9703.01, Block Group 1

- Caldwell County Census Tract 9203.02, Block Group 1

The U.S. DOT specifically encourages the early examination of potential populations protected by the Title VI of the Civil Rights Act of 1964 and related nondiscrimination statuses.

Limited English proficiency (LEP) is a term used in the United States that refers to a person who is not fluent in the English language, often because it is not their native language. Both LEP and English-language learner (ELL) are terms used by the Office for Civil Rights, a sub-agency of the U.S. Department of Education.



Methodology

The demographics of the affected area was defined using U.S. Census Bureau data and the percentages for minorities, poverty status, elderly, LEP, and disabled populations should be compared to the Census tracts and block groups, the County as a whole, the entire state and the United States.

The primary source of data for this report is the 2019-2023 U.S. Census Bureau American Community Survey including tables:

- B01001 - Sex by Age
- B03002 - Hispanic or Latino Origin by Race
- B16004 - Age by Language Spoken at Home by Ability to Speak English for the Population 5 Years and Over
- B17021 - Poverty Status of Individuals in the Past 12 Months by Living Arrangement
- C21007 - Age by Veteran Status by Poverty Status in the Past 12 Months by Disability Status

The data presented in this document is intended to highlight areas of concern that will require additional analysis should any project be advanced to future phases.

The Census tables in this report include the total number and percentages for minorities, elderly, low-income, LEP, and disabled population levels for the census tract block groups, census tracts, counties, the Pennyryle Area Development District (PeADD), state, and nation. The PeADD includes the counties of Caldwell, Christian, Crittenden, Hopkins, Livingston, Lyon, Muhlenberg, Todd and Trigg Counties. The project area is comprised of several census tracts: Census Tract 9701, 9702.01, 9702.02, and 9703.01 (in Trigg County) and Census Tract 9203.02 (in Caldwell County). This report uses the population percentages for Trigg County and Caldwell County as the reference threshold for identifying target populations. The County numbers most likely provide a better snapshot of the overall population characteristics in the study area as opposed to the United States or state percentages.

The methodologies used in this planning document are appropriate for identifying possible areas of concern in small urban areas and potential project corridors. However, during future phases of project development a more detailed and robust analysis may identify the potential for impacts to low-income and minority populations.

Study Findings

Overall Summary

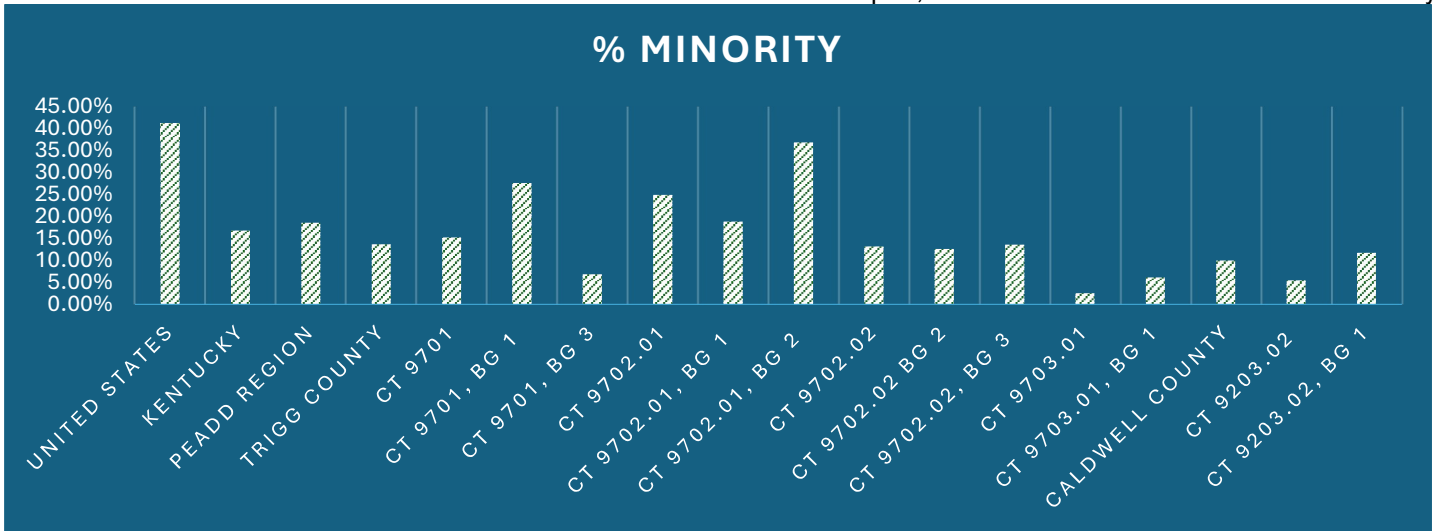
The data provides a snapshot of key demographic groups: minority populations, residents aged 65 and over, individuals living below the poverty line, people with disabilities, and those with Limited English Proficiency (LEP). In each demographic table, values from Census Tract Block Groups that exceed the corresponding county-level data thresholds are highlighted in red.

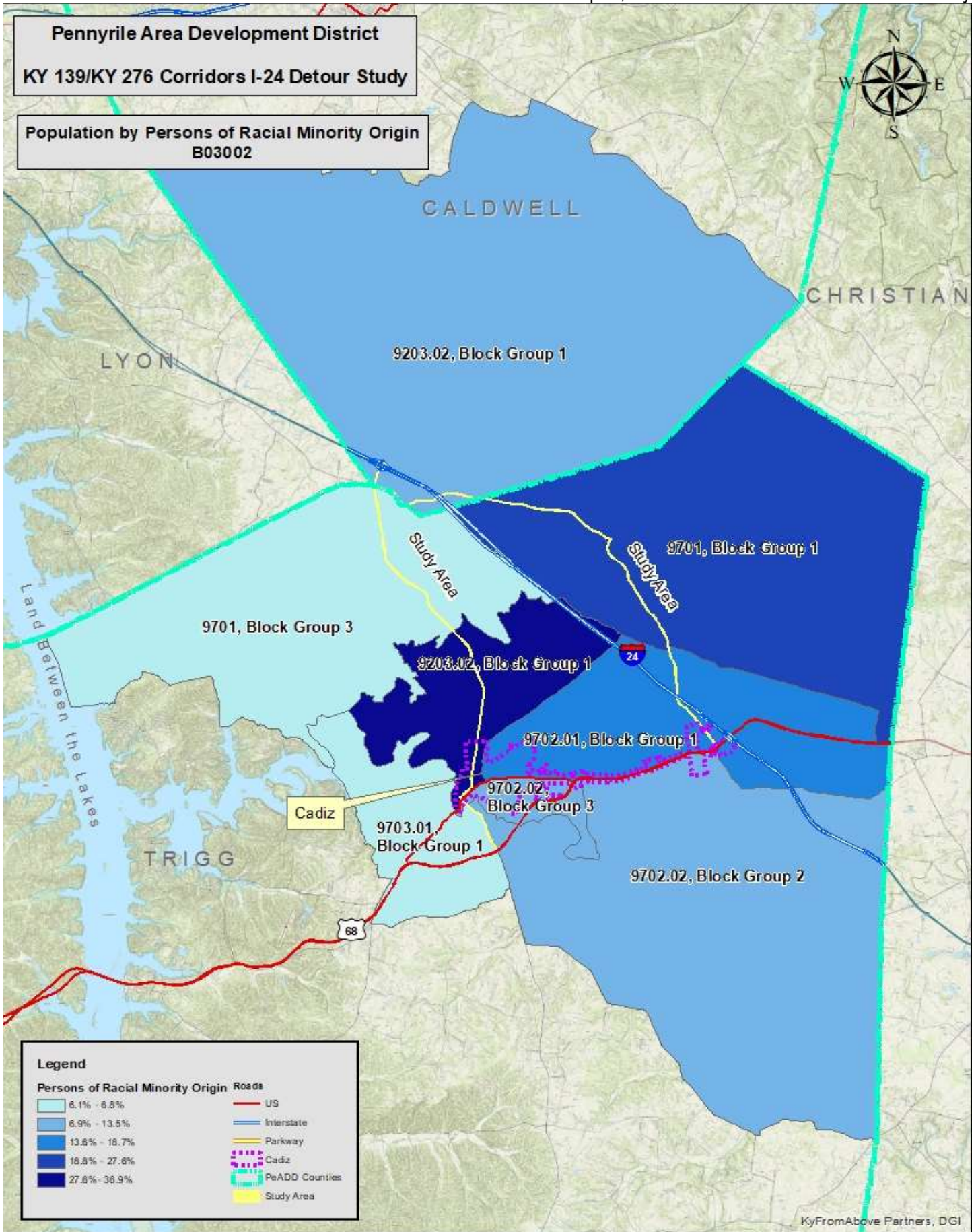
Population by Persons of Racial Minority Origin

The information provided in the table below reflects the information obtained for the Nation, the State, the Region, the Counties, the Census Tracts, and the Census Tract Block Groups for the purposes of comparison and analysis.

	Total Population	Persons of Racial Minority Origin	Percentage
United States	331,097,593	136,211,129	41.14%
Kentucky	4,502,935	754,278	16.75%
PeADD Region	214,370	39,912	18.62%
Trigg County	14,211	1931	13.59%
CT 9701	2805	428	15.26%
CT 9701, BG 1	1387	383	27.61%
CT 9701, BG 3	657	45	6.85%
CT 9702.01	2,781	694	24.96%
CT 9702.01, BG 1	1833	344	18.77%
CT 9702.01, BG 2	948	350	36.92%
CT 9702.02	3,883	512	13.19%
CT 9702.02 BG 2	2444	308	12.60%
CT 9702.02, BG 3	967	131	13.55%
CT 9703.01	2,730	67	2.45%
CT 9703.01, BG 1	912	56	6.14%
Caldwell County	12,631	1,256	9.94%
CT 9203.02	2,179	119	5.46%
CT 9203.02, BG 1	1,014	119	11.74%

The United States has a significant minority population at 41.14%. Kentucky (16.75%) has a considerably lower proportion of minority residents compared to the national average. The PeADD Region (18.62%) has a slightly higher minority population percentage than Kentucky overall. Trigg County (13.59%) is below both the Kentucky and PeADD regional averages. Caldwell County (9.94%) has the lowest minority population percentage among the listed local areas. Census Tract 9702.01, Block Group 2 also has a relatively high minority population (36.92%), as does Census Tract 9701, Block Group 1 (27.61%). Others, like Census Tract 9703.01, are very low (2.45%).





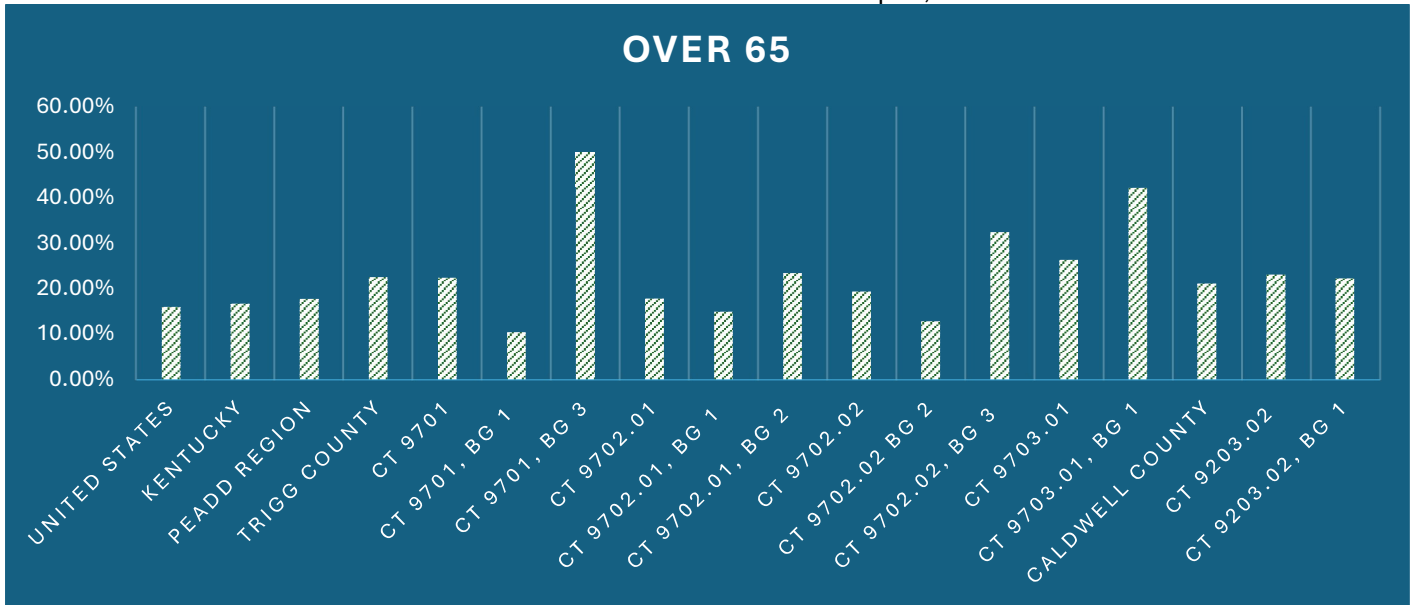
Population by Persons Age 65 Years and Older

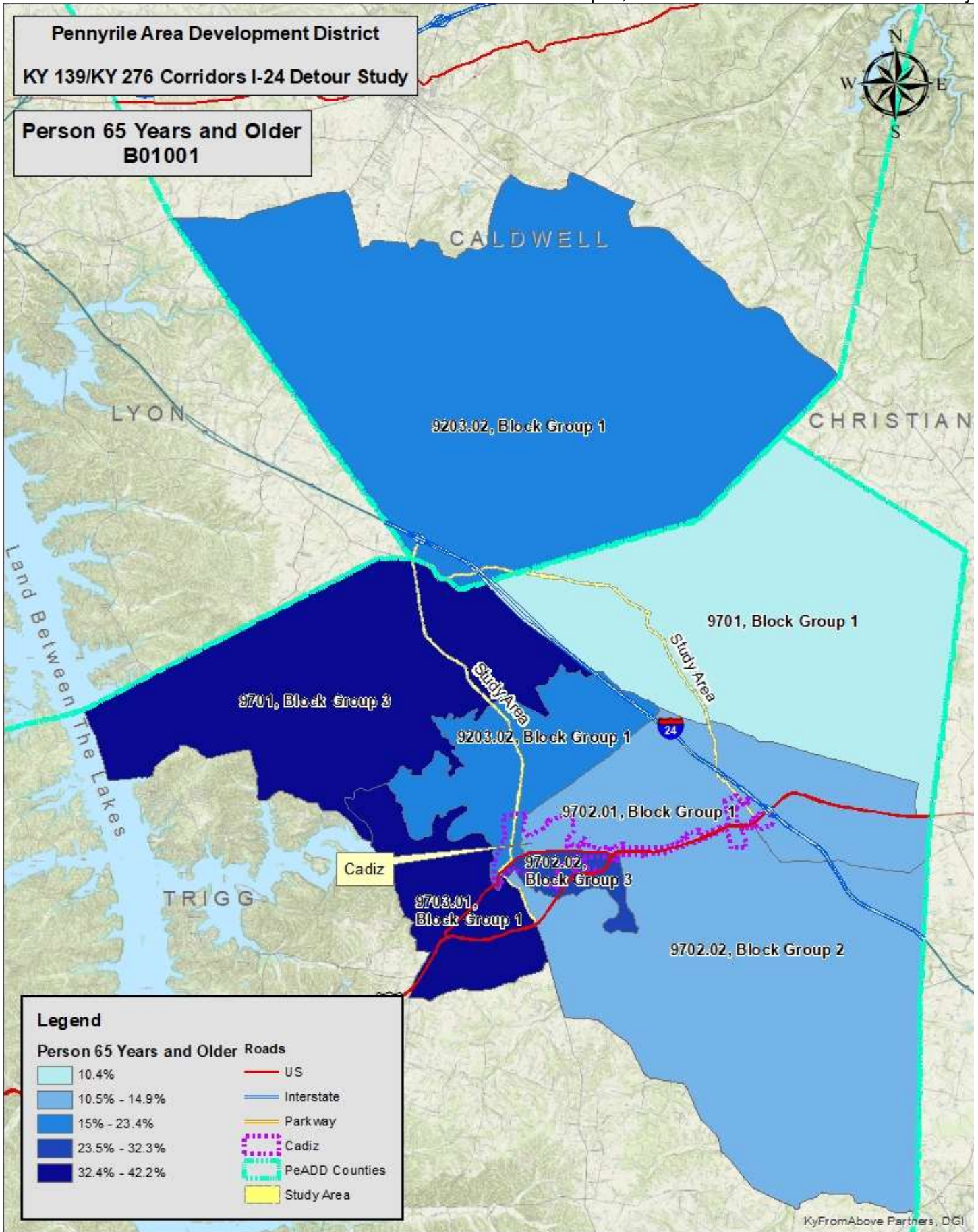
The information provided in the table below reflects the information obtained from the for the Nation, the State, the Region, the Counties, the Census Tracts, and the Census Tract Block Groups for the purposes of comparison and analysis.

	Total Population	Population by Persons Age 65 Years and Older	Percentage
United States	15.99%	United States	15.99%
Kentucky	16.70%	Kentucky	16.70%
PeADD Region	17.77%	PeADD Region	17.77%
Trigg County	22.55%	Trigg County	22.55%
CT 9701	2805	628	22.39%
CT 9701, BG 1	1387	145	10.45%
CT 9701, BG 3	657	328	49.92%
CT 9702.01	2,781	496	17.84%
CT 9702.01, BG 1	1833	274	14.95%
CT 9702.01, BG 2	948	222	23.42%
CT 9702.02	3,883	753	19.39%
CT 9702.02 BG 2	2444	314	12.85%
CT 9702.02, BG 3	967	313	32.37%
CT 9703.01	2,730	720	26.37%
CT 9703.01, BG 1	912	385	42.21%
Caldwell County	12,631	2,667	21.11%
CT 9203.02	2,179	503	23.08%
CT 9203.02, BG 1	1,014	226	22.29%

In the United States about 15.99% of the population is 65 or older. The Commonwealth of Kentucky (16.70%) and the PeADD Region (17.77%) both have proportions of older adults slightly above the national average. Trigg County stands out with 22.55% of its population aged 65 or over, significantly higher than state and national figures. This higher percentage is anticipated as it is well known that Trigg County's close proximity to the Land Between the Lakes Recreational Area makes it a popular location for retirees. Caldwell County (21.11%) also has a high proportion of older residents. This suggests an aging population in these specific counties. Several areas have a high proportion of older adults, with Census Tract 9701, Block

Group 3 having almost half its population (49.92%) in this age group, and Census Tract 9703.01, Block Group 1 also very high (42.21%).



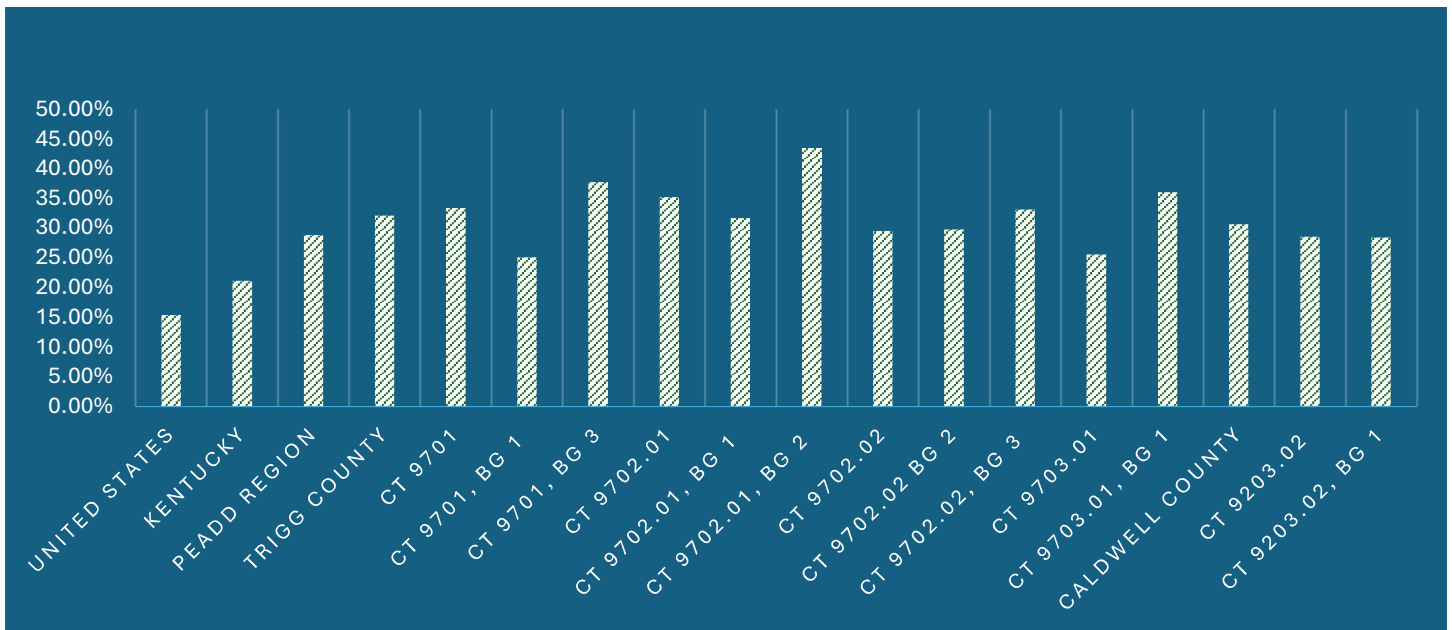


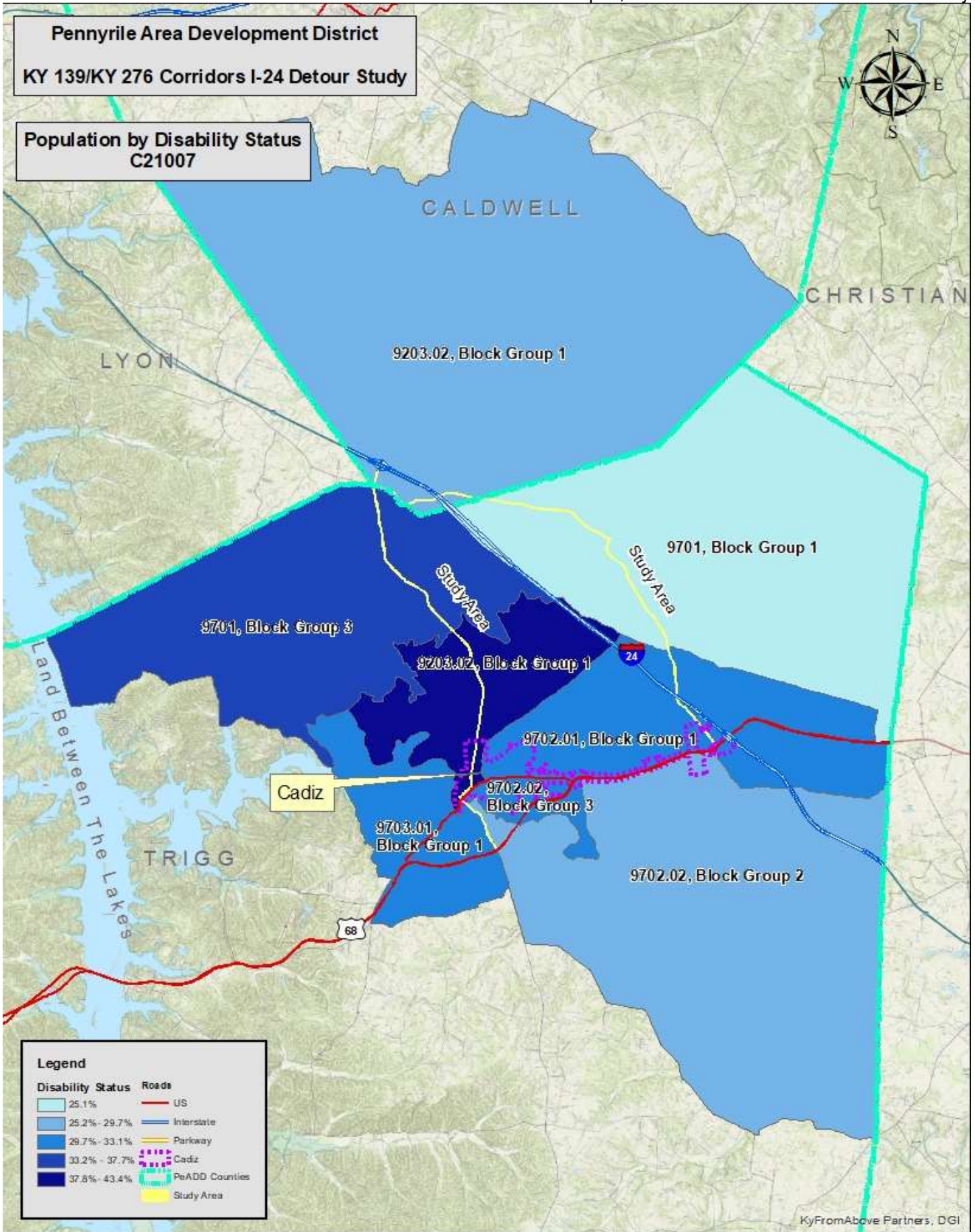
Population by Disability Status

The information provided in the table below reflects the information obtained from the for the Nation, the State, the Region, the County, the Census Tracts, and the Census Tract Block Groups for the purposes of comparison and analysis.

	Population Total	Population by Disability Status	Percentage
United States	250,304,257	38,455,173	15.36%
Kentucky	3,375,071	713,449	21.14%
PeADD Region	149,924	43,235	28.84%
Trigg County	11,031	3543	32.12%
CT 9701	2109	704	33.38%
CT 9701, BG 1	933	234	25.08%
CT 9701, BG 3	599	226	37.73%
CT 9702.01	2,088	735	35.20%
CT 9702.01, BG 1	1456	461	31.66%
CT 9702.01, BG 2	632	274	43.35%
CT 9702.02	2,780	821	29.53%
CT 9702.02 BG 2	1617	481	29.75%
CT 9702.02, BG 3	790	262	33.16%
CT 9703.01	2,317	592	25.55%
CT 9703.01, BG 1	876	316	36.07%
Caldwell County	9,574	2,934	30.65%
CT 9203.02	1,615	461	28.54%
CT 9203.02, BG 1	693	197	28.43%

In the United States, 15.36% of the civilian noninstitutionalized population reports having a disability. For the Commonwealth of Kentucky, 21.14% of residents report having a disability which is a substantially higher disability rate than the national average. The PeADD Region shows a very high disability rate at 28.84%, significantly exceeding both Kentucky and US figures. This increasing trend is even more pronounced in Trigg County (32.12%) and Caldwell County (30.65%), which is indicative that a large segment of the population in these counties lives with a disability. These are the highest rates observed across all categories for these counties compared to state/national figures. Rates within the individual Census Tracts vary significantly between Census Tract 9701, Block Group 1 at 25.55% and Census Tract 9702.01, Block Group 2 which has a particularly high disability rate (43.35%).



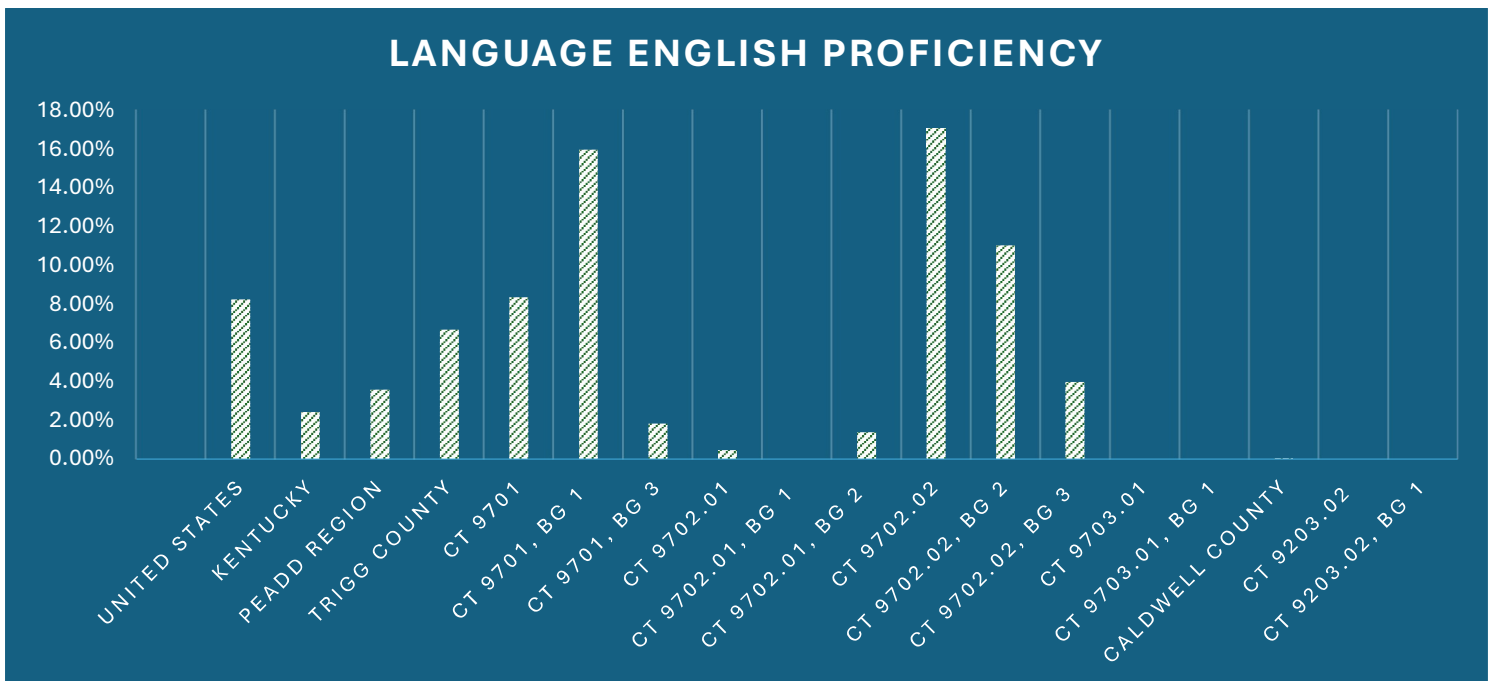


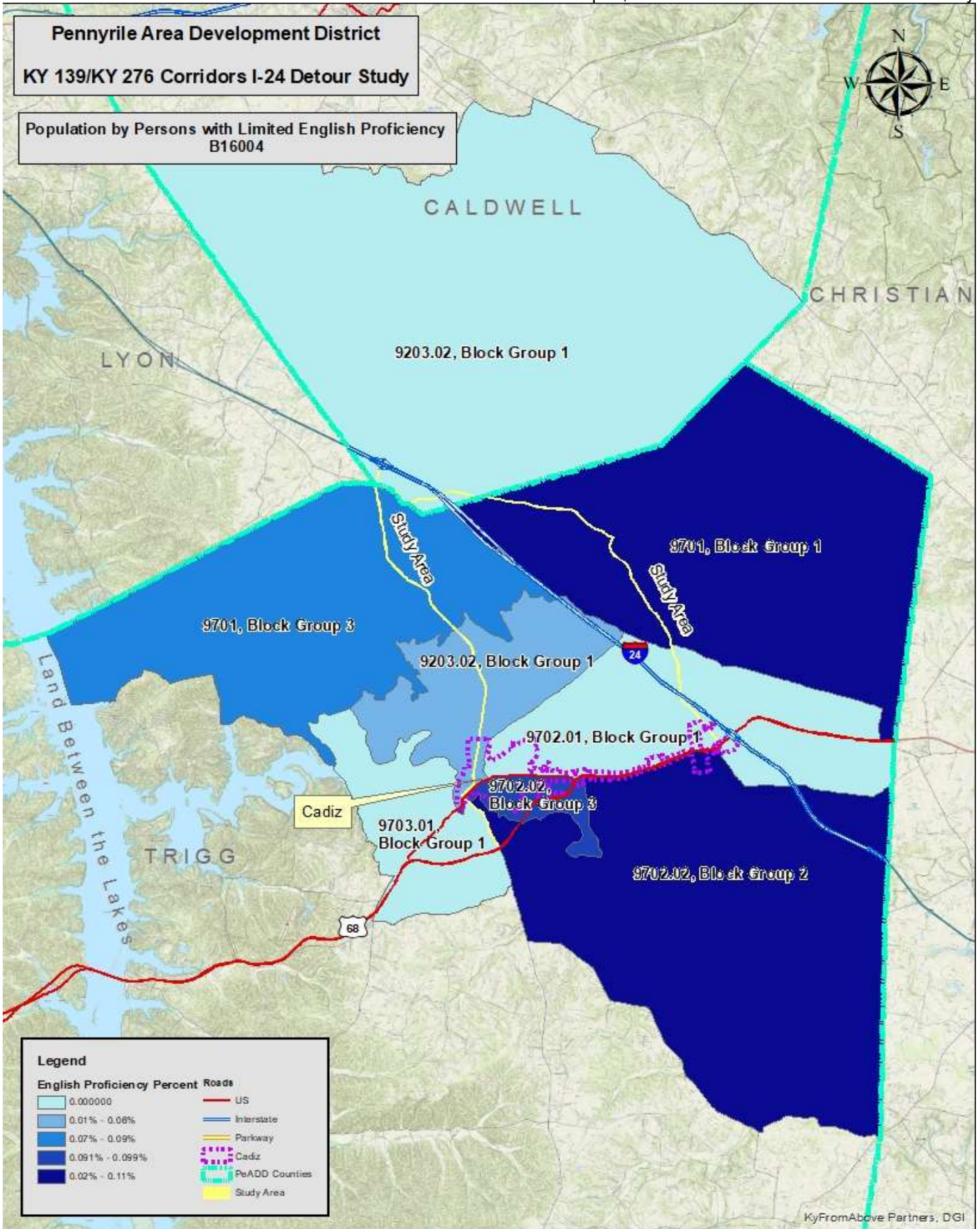
Population by Persons with Limited English Proficiency

Limited English Proficiency (LEP) refers to individuals who, due to their place of birth or culture, communicate in a language other than English, do not speak English as their primary language, and have a limited ability to read, speak, write, or understand English.

	Population Total	Population Limited English Proficiency	Percentage
United States	312,092,668	25,704,846	8.24%
Kentucky	4,236,382	102,685	2.42%
PeADD Region	199,494	7,142	3.58%
Trigg County	13,409	894	6.67%
CT 9701	2614	218	8.34%
CT 9701, BG 1	1289	206	15.98%
CT 9701, BG 3	657	12	1.83%
CT 9702.01	2,594	12	0.46%
CT 9702.01, BG 1	1731	0	0.00%
CT 9702.01, BG 2	863	12	1.39%
CT 9702.02	3,607	616	17.08%
CT 9702.02, BG 2	2266	250	11.03%
CT 9702.02, BG 3	903	36	3.99%
CT 9703.01	2,642	0	0.00%
CT 9703.01, BG 1	912	0	0.00%
Caldwell County	11,916	4	0.03%
CT 9203.02	2,135	0	0.00%
CT 9203.02, BG 1	978	0	0.00%

Nationally, 8.24% of the population has Limited English Proficiency. Kentucky (2.42%) has a much lower LEP population compared to the US. The PeADD Region (3.58%) is slightly above the Kentucky average for LEP individuals but still well below the national figure. Trigg County (6.67%) has a higher LEP percentage than the state and PeADD region, though still below the national average. Caldwell County has a remarkably low LEP rate at just 0.03%. While many tracts have low or zero LEP populations, Census Tract 9702.02 (17.08%) and Census Tract 9701, Block Group 1 (15.98%) reflect rates significantly higher than the national trend.





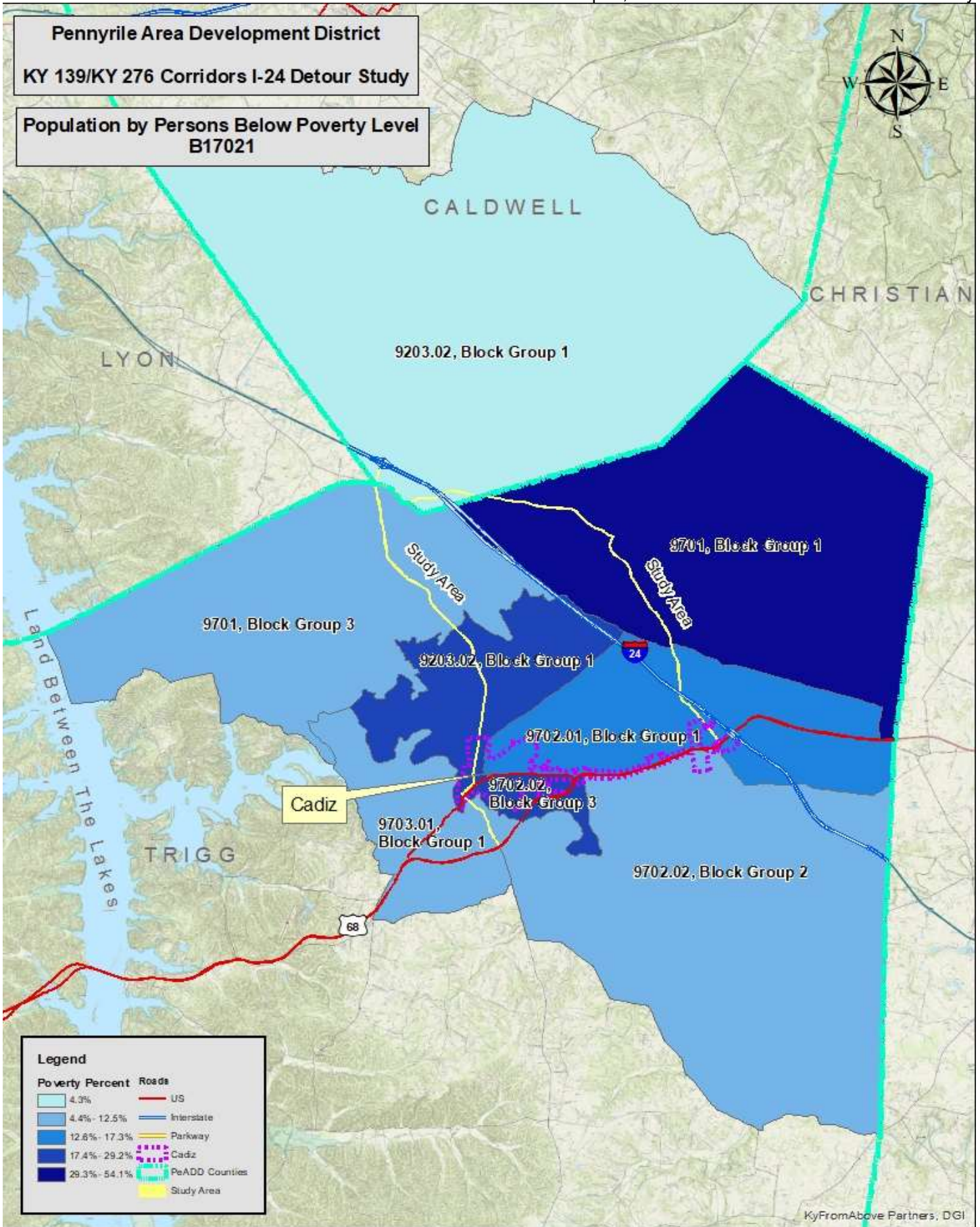
Population by Persons Below Poverty Level

Poverty is defined by the U.S. Census Bureau as having income below a certain threshold, which is adjusted annually for inflation.

	Total Population	Population by Persons Below Poverty Level	Percentage
United States	323,275,448	40,521,584	12.53%
Kentucky	4,372,749	704,758	16.12%
PeADD Region	204,261	36,505	17.87%
Trigg County	14,137	2888	20.43%
CT 9701	2805	1088	38.79%
CT 9701, BG 1	1387	750	54.07%
CT 9701, BG 3	657	76	11.57%
CT 9702.01	2,710	550	20.30%
CT 9702.01, BG 1	1815	314	17.30%
CT 9702.01, BG 2	895	236	26.37%
CT 9702.02	3,880	655	16.88%
CT 9702.02 BG 2	2444	307	12.56%
CT 9702.02, BG 3	964	282	29.25%
CT 9703.01	2,730	189	6.92%
CT 9703.01, BG 1	912	98	10.75%
Caldwell County	12,483	1,731	13.87%
CT 9203.02	2,179	288	13.22%
CT 9203.02, BG 1	1,014	44	4.34%

The national poverty rate is 12.53%. Kentucky (16.12%) has a higher poverty rate than the US average. The PeADD Region (17.87%) experiences an even higher poverty rate than the Kentucky state average. Trigg County (20.43%) shows a notably high poverty rate, exceeding both regional, state, and national levels. Caldwell County (13.87%) has a poverty rate closer to the national average but lower than the Kentucky and PeADD regional rates. The poverty rate is notably high in Census Tract 9701 (38.79%) and especially extreme in Census Tract 9701, Block Group 1 (54.07%). In contrast, Census Tract 9203.02, Block Group 1 shows a very low poverty rate (4.34%).





Conclusion

The proposed project includes portions of Caldwell and Trigg Counties and transverses through the City of Cadiz. The project area includes a total of five (5) Census Tracts and eight (8) Block Groups. The data highlights that the PeADD region, and particularly counties like Trigg and Caldwell within it, face distinct demographic and socio-economic conditions compared to state and national averages. Notably, higher rates of aging populations, poverty (especially in Trigg County), and disability are prevalent in these local areas. Conversely, Limited English Proficiency is generally low in this part of Kentucky, with Trigg County being a slight exception within the local context.

The below Summary Table of Percentages further details the comparison of the Study Area.

Summary Table of Percentages

Geographic Area	Minority Population	Population 65+	Below Poverty Line	With a Disability	Limited English Proficiency (LEP)
United States	41.14%	15.99%	12.53%	15.36%	8.24%
Kentucky	16.75%	16.70%	16.12%	21.14%	2.42%
PeADD Region	18.62%	17.77%	17.87%	28.84%	3.58%
Trigg County	13.59%	22.55%	20.43%	32.12%	6.67%
CT 9701	15.26%	22.39%	38.79%	33.38%	8.34%
CT 9701, BG 1	27.61%	10.45%	54.07%	25.08%	15.98%
CT 9701, BG 3	6.85%	49.92%	11.57%	37.73%	1.83%
CT 9702.01	24.96%	17.84%	20.30%	35.20%	0.46%
CT 9702.01, BG 1	18.77%	14.95%	17.30%	31.66%	0.00%
CT 9702.01, BG 2	36.92%	23.42%	26.37%	43.35%	1.39%
CT 9702.02	13.19%	19.39%	16.88%	29.53%	17.08%
CT 9702.02, BG 2	12.60%	12.85%	12.56%	29.75%	11.03%
CT 9702.02, BG 3	13.55%	32.37%	29.25%	33.16%	3.99%
CT 9703.01	2.45%	26.37%	6.92%	25.55%	0.00%
CT 9703.01, BG 1	6.14%	42.21%	10.75%	36.07%	0.00%
Caldwell County	9.94%	21.11%	13.87%	30.65%	0.03%
CT 9203.02	5.46%	23.08%	13.22%	28.54%	0.00%
CT 9203.02, BG 1	11.74%	22.29%	4.34%	28.43%	0.00%

Three census tracts block groups in the study area show higher vulnerability indicators when compared to Trigg County.

- **CT 9701, BG 1** shows elevated rates in poverty (54.07%), minority population (27.61%), and limited English proficiency (15.98%).
- **CT 9702.01, BG 2** exceeds Trigg County in minority population (36.92%), residents aged 65 and older (23.42%), poverty (26.37%), and disability (43.35%).
- **CT 9702.02, BG 3** reports higher percentages of residents aged 65 and older (32.37%), those below the poverty line (29.25%), and individuals with a disability (33.16%).