



KY 86 Spot Improvement 1

US 60 to Jesse Priest Road

Breckinridge County (KY 86 MP 15.957 to MP 17.700)



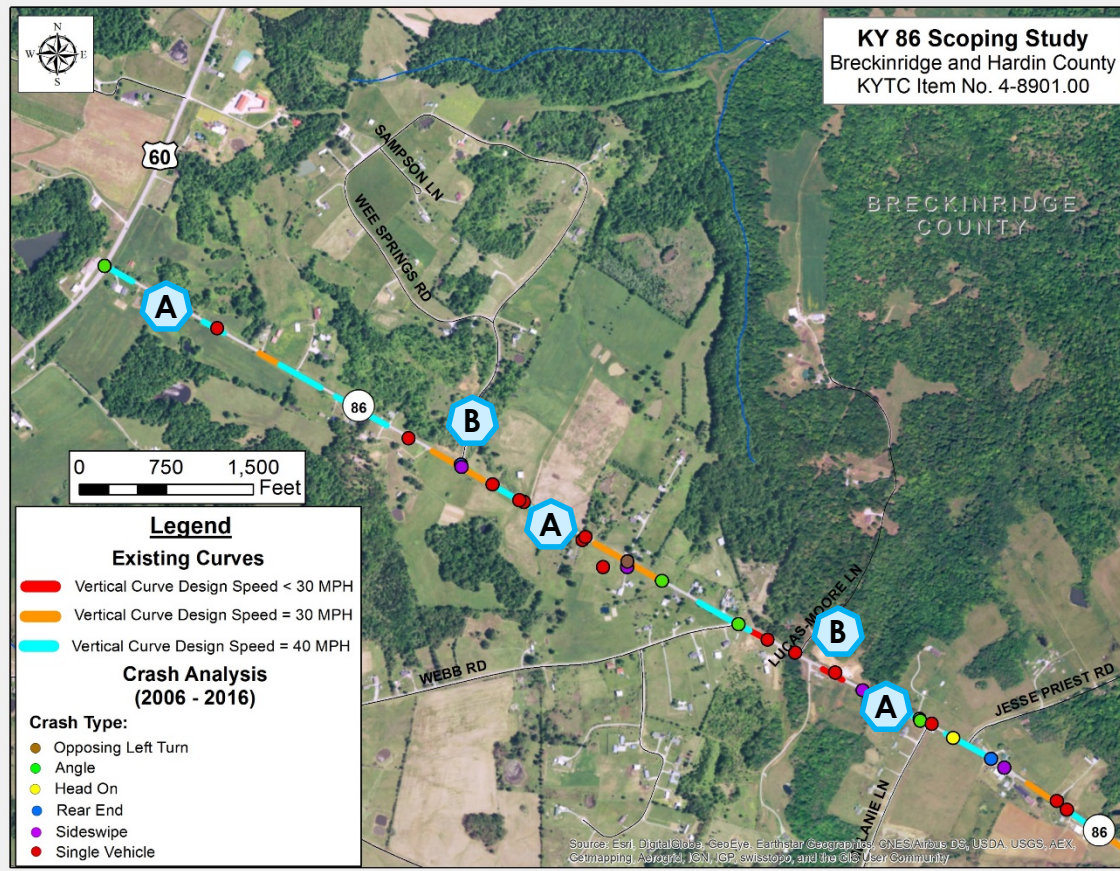
Existing Conditions

- 3 High Crash Spots with CRF's 1.24
- 29 Reported Crashes from 2006 to 2016 (15 Injury and 14 PDO)
- 48 Percent Single Vehicle Crashes

- Poor Stopping Sight Distance
- Skewed Intersections
- Steep Roadside Ditches
- Passing Vehicles
- Multiple Driveways

Improvement Options

Label	Improvement	Cost Estimate
A	Widen Shoulders and Improve Clear Zone	\$1,200,000
B	Pave Intersection Approach	\$100,000
Total Construction Cost Estimate		\$100,000 to 1,200,000





KY 86 Spot Improvement 2

Jesse Priest Road to West of Rosetta Corners Road

Breckinridge County (KY 86 MP 17.700 to MP 18.800)



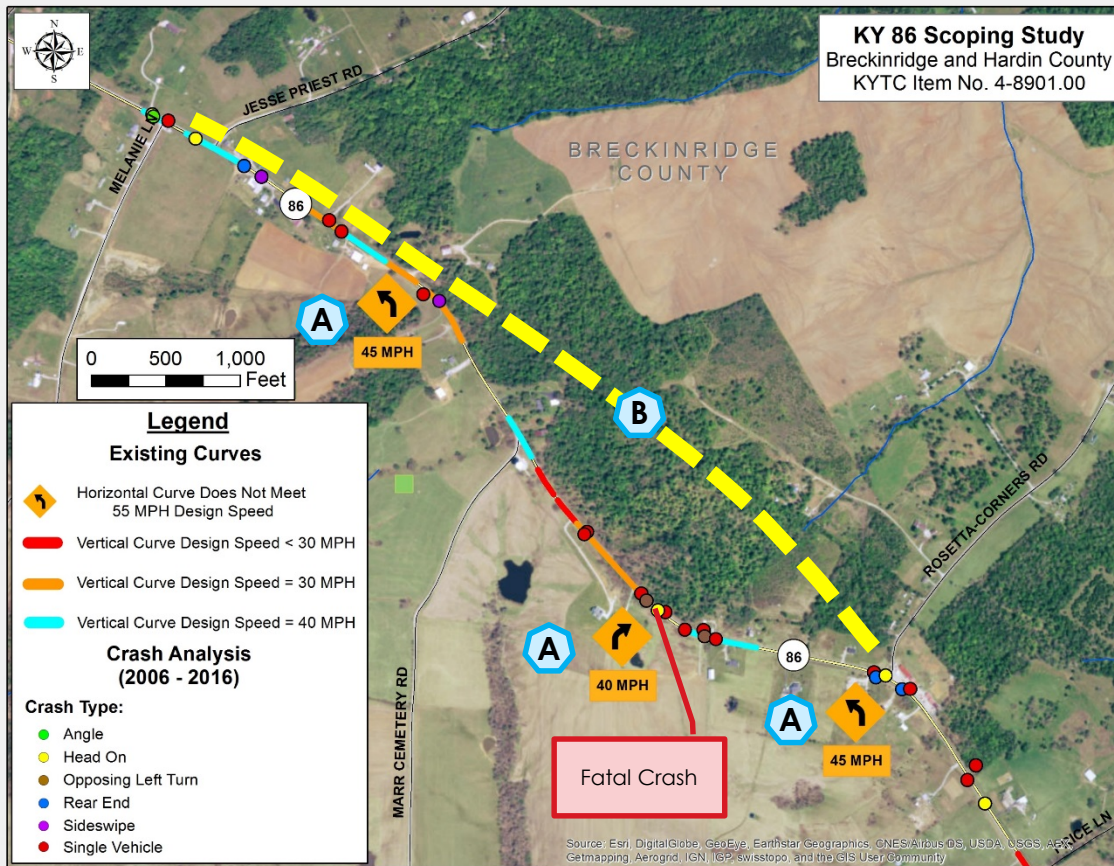
Existing Conditions

- 3 High Crash Spots with CRF's 1.24 to 1.86
- 21 Reported Crashes from 2006 to 2016 (1 Fatal, 8 Injury, and 12 PDO)

- Combination of Sharp Curves and Poor Stopping Sight Distance
- Poor Sight Distance at Jesse Priest Road and Marr Cemetery Road Intersections
- Identified by Local Officials

Improvement Options

Label	Improvement	Cost Estimate
A	Widen Shoulders at Horizontal Curves	\$500,000
	Flexible Delineators at Horizontal Curves	
	High-Friction Pavement Surface at Horizontal Curves	
B	Realignment	\$3,800,000
Total Construction Cost Estimate		\$500,000 or \$3,800,000





KY 86 Spot Improvement 3

Merle Allen Lane to Lonnie Haynes Road

Breckinridge County (KY 86 MP 19.400 to MP 20.000)



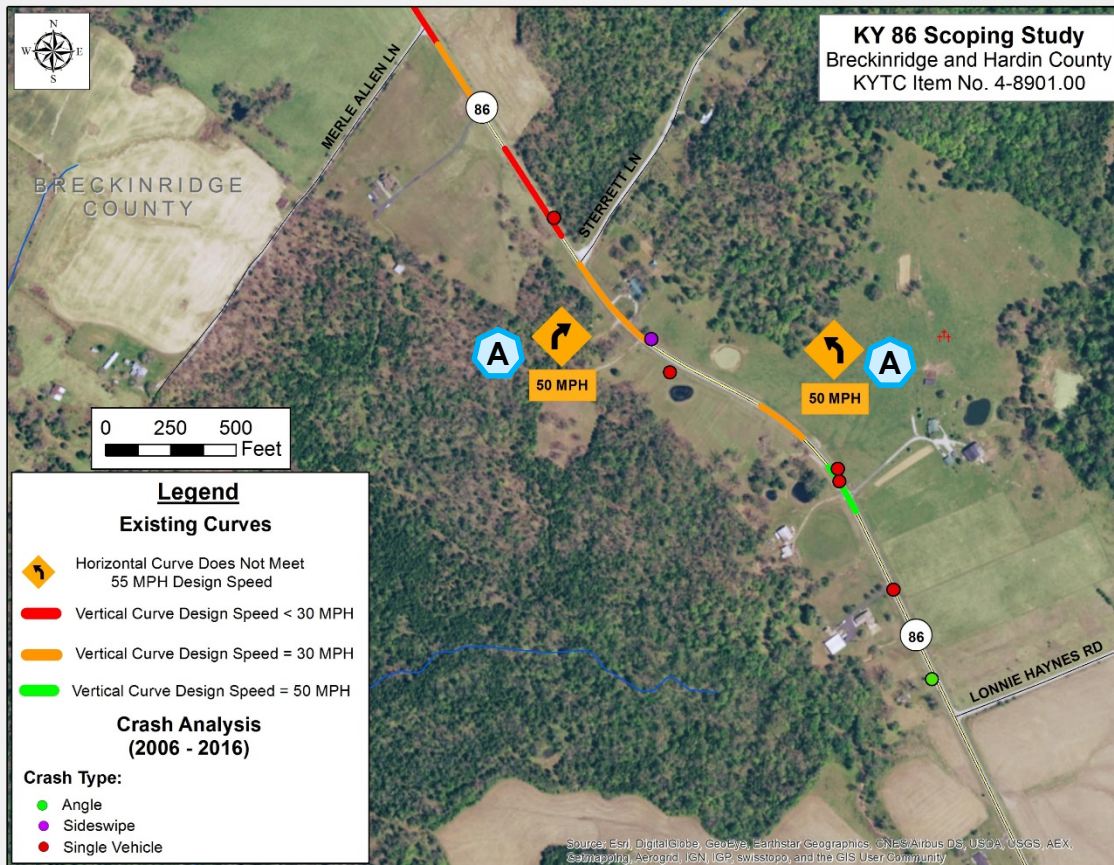
Existing Conditions

- 7 Reported Crashes from 2006 to 2016 (2 Injury and 5 PDO)
- Crash Types: 1 Angle, 4 Single Vehicle, and 2 Sideswipe

- Reverse Curves combined with Poor Stopping Sight Distance
- Identified by Local Officials
- Excessive Travel Speeds
- Missing Stop Sign at Merle Allen Road

Improvement Options

Label	Improvement	Cost Estimate
A	Widen Shoulders at Horizontal Curves	\$500,000
	Flexible Delineators at Horizontal Curves	
	High-Friction Pavement Surface at Horizontal Curves	
Total Construction Cost Estimate		\$500,000





KY 86 Spot Improvement 4

KY 690 Intersection

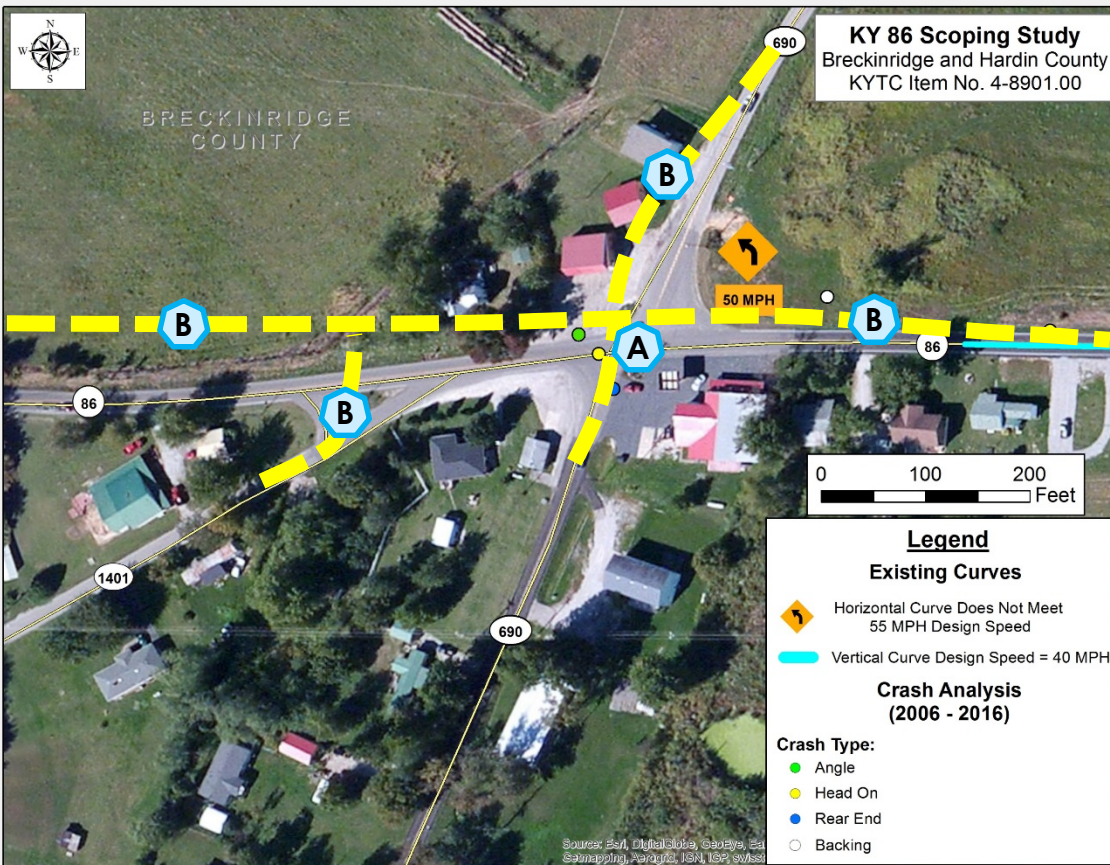
Breckinridge County (KY 86 MP 21.900 to MP 22.100)



Existing Conditions

- 5 Reported Crashes from 2006 to 2016 (1 Injury and 4 PDO)
- Crash Types: 2 Head On, 1 Angle, 1 Rear End, and 1 Backing

- Worn out striping through curve at intersection
- Multiple Access Points
- Drivers pulling in and out of Custer General Store
- Skewed Intersections

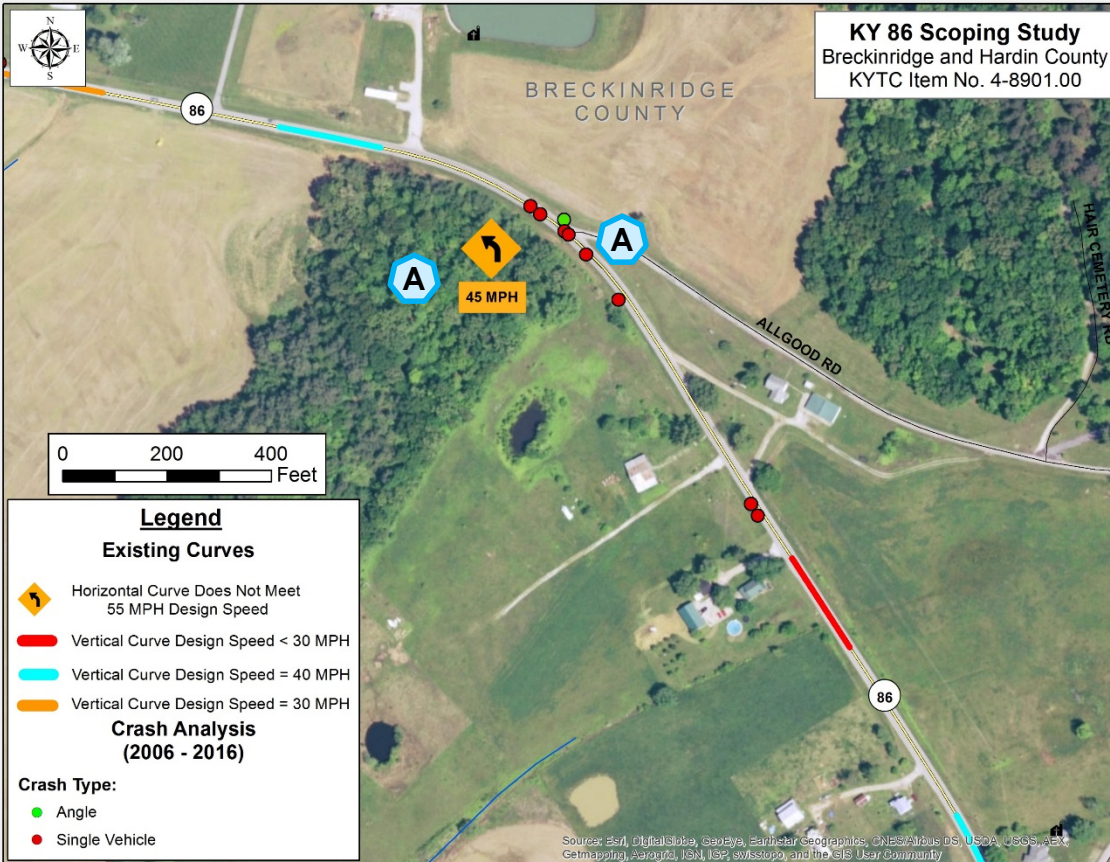


Improvement Options

Label	Improvement	Cost Estimate
A	Install Flashing Intersection Beacon at KY 690	\$100,000
B	Realignment and Access Management in front of Custer General Store	\$1,900,000
Total Construction Cost Estimate		\$100,000 to \$2,000,000



- Steep Roadside Ditch
- Skewed Intersection at Allgood Road
- Excessive Travel Speeds
- Identified by Local Officials



Improvement Options

Label	Improvement	Cost Estimate
A	Remove Vegetation at Horizontal Curve	\$350,000
	Widen Shoulders and Improve Clear Zone	
	Flexible Delineators at Horizontal Curve	
	High-Friction Pavement Surface at Horizontal Curve	
	Remove Allgood Road Connection to KY 86	
Total Construction Cost Estimate		\$350,000



KY 86 Spot Improvement 6 Cave Hollow Lane

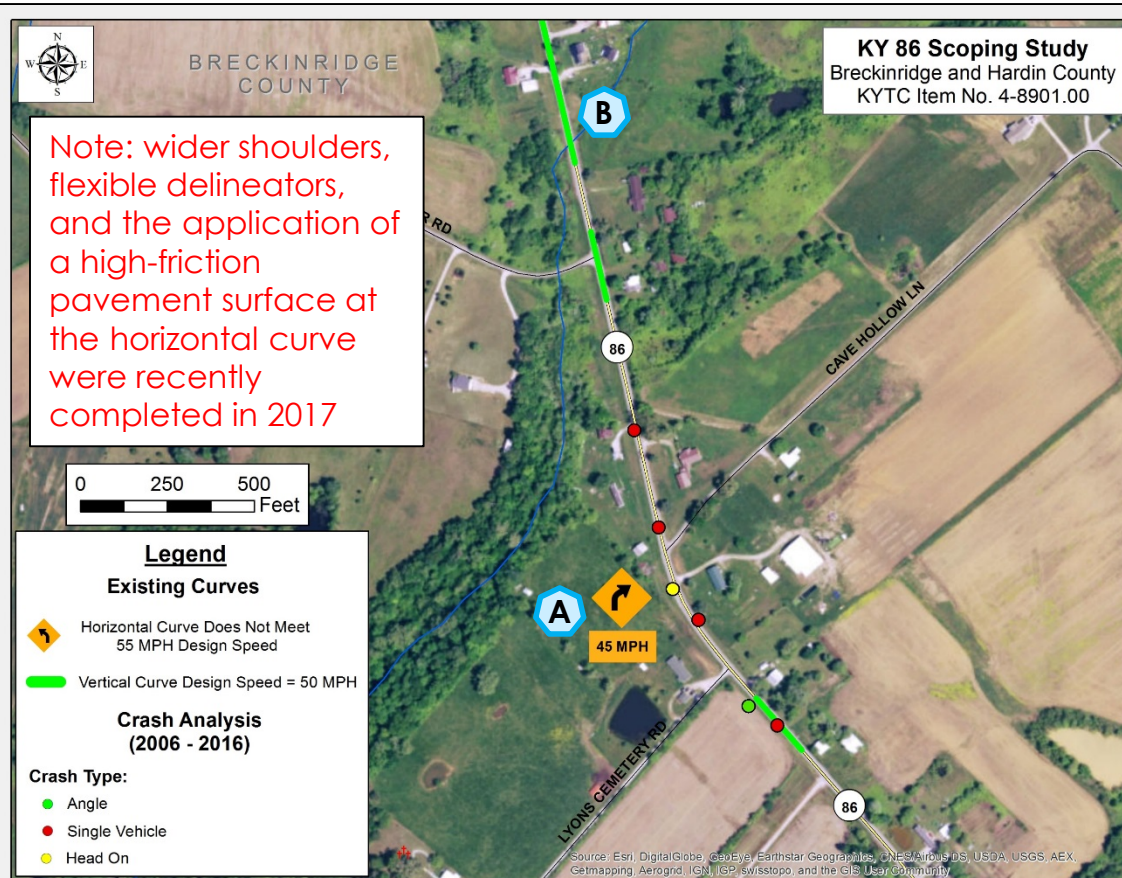
Breckinridge County (KY 86 MP 23.600 to MP 24.000)



Existing Conditions

- 1 High Crash Spot with CRF 1.96.
- 6 Reported Crashes from 2006 to 2016 (3 Injury and 3 PDO)
- 2 Recent Single Vehicle Crashes

- Excessive Travel Speeds
- Narrow Creek Crossing
- Identified by Local Officials



Improvement Options

Label	Improvement	Cost Estimate
A	Widen Shoulders at Horizontal Curve	\$100,000
	Flexible Delineators at Horizontal Curve	
	High-Friction Pavement Surface at Horizontal Curve	
B	Lengthen Culvert and Improve Clear Zone	\$100,000
Total Construction Cost Estimate		\$100,000 to \$200,000



KY 86 Spot Improvement 7

Lyons-Daughtery Road to East of KY 401

Breckinridge County (KY 86 MP 24.300 to MP 25.700)



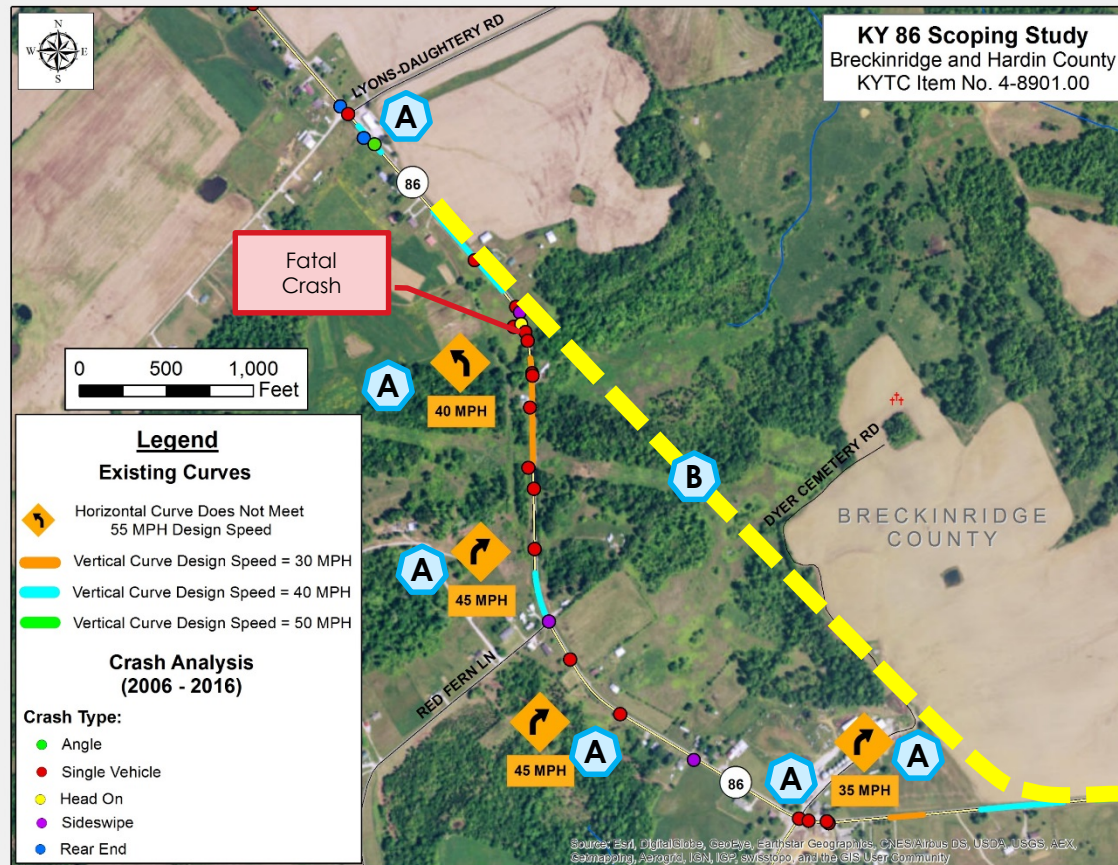
Existing Conditions

- 1 High Crash Spot with CRF 2.49
- 27 Reported Crashes from 2006 to 2016 (1 Fatal, 9 Injury, and 17 PDO)

- Combination of Sharp Curves and Poor Stopping Sight Distance
- Identified by Local Officials
- Excessive Travel Speeds
- Access Management

Improvement Options

Label	Improvement	Cost Estimate
A	Widen Shoulders at Horizontal Curves	\$600,000
	Flexible Delineators at Horizontal Curves	
	High-Friction Pavement Surface at Horizontal Curves	
	Pave Intersection Approach	
B	Realignment	\$3,700,000
Total Construction Cost Estimate		\$600,000 or \$3,700,00





KY 86 Spot Improvement 8

Breckinridge & Hardin County Line

Breckinridge County (KY 86 MP 25.700 to 26.137)

Hardin County (KY 86 MP 0.000 to MP 0.200)



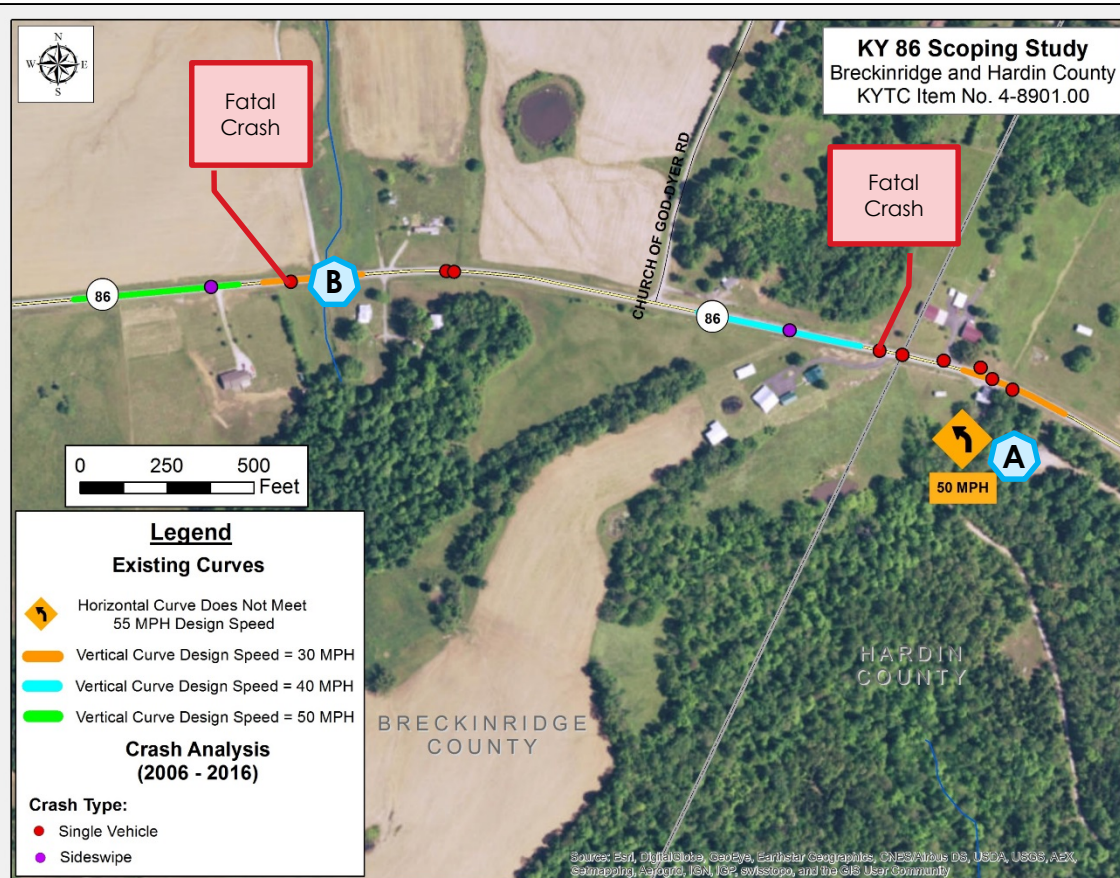
Existing Conditions

- 1 High Crash Spot with CRF 1.25
- 13 Reported Crashes from 2006 to 2016 (2 Fatal, 4 Injury, and 7 PDO)

- Poor Stopping Sight Distance
- Narrow Culvert
- Excessive Travel Speeds

Improvement Options

Label	Improvement	Cost Estimate
A	Widen Shoulders at Horizontal Curve	\$200,000
	Flexible Delineators at Horizontal Curve	
	High-Friction Pavement Surface at Horizontal Curve	
B	Lengthen Culvert and Improve Clear Zone	\$100,000
Total Construction Cost Estimate		\$200,000 to \$300,000





KY 86 Spot Improvement 9

West of KY 2213

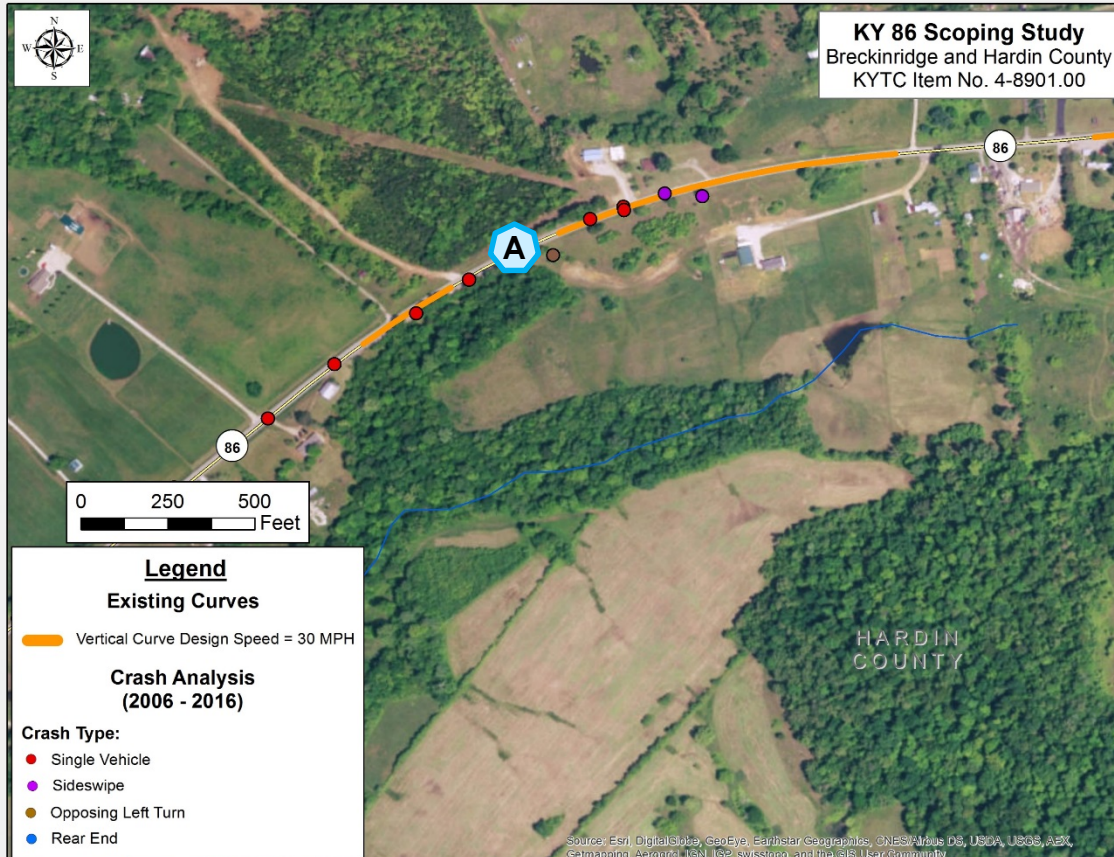
Hardin County (KY 86 MP 1.300 to MP 1.700)



Existing Conditions

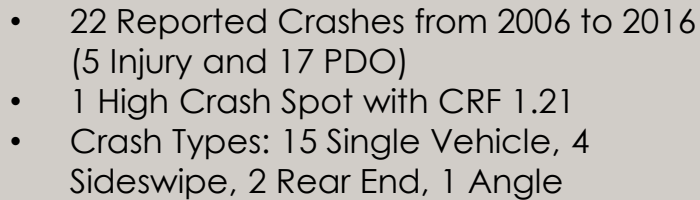
- 1 High Crash Spot with CRF 1.25
- 9 Reported Crashes from 2006 to 2016 (3 Injury and 6 PDO)

- Poor Stopping Sight Distance
- Clear Zone
- Identified by Local Officials
- Excessive Travel Speeds



Improvement Options

Label	Improvement	Cost Estimate
A	Remove Vegetation at Horizontal Curve	\$200,000
	Widen Shoulders at Horizontal Curve	
Total Construction Cost Estimate		\$200,000



- Steep Grades
- Identified by Local Officials
- Trees Falling Into Road
- Functionally Obsolete Bridge with Sufficiency Rating = 78
- Narrow Culvert Crossings

Improvement Options

Label	Improvement	Cost Estimate
A	Remove Vegetation and Tree Canopy	\$500,000
	Widen Shoulders at Horizontal Curve and Extend Culvert	
B	Replace Bridge	\$700,000
C	Lengthen Culvert and Improve Clear Zone	\$100,000
D	Passing Lane at Arch Hill	\$2,800,000
Total Construction Cost Estimate		\$100,000 to \$3,600,000



KY 86 Spot Improvement 11

Bridge over Rough River

Hardin County (KY 86 MP 4.879)



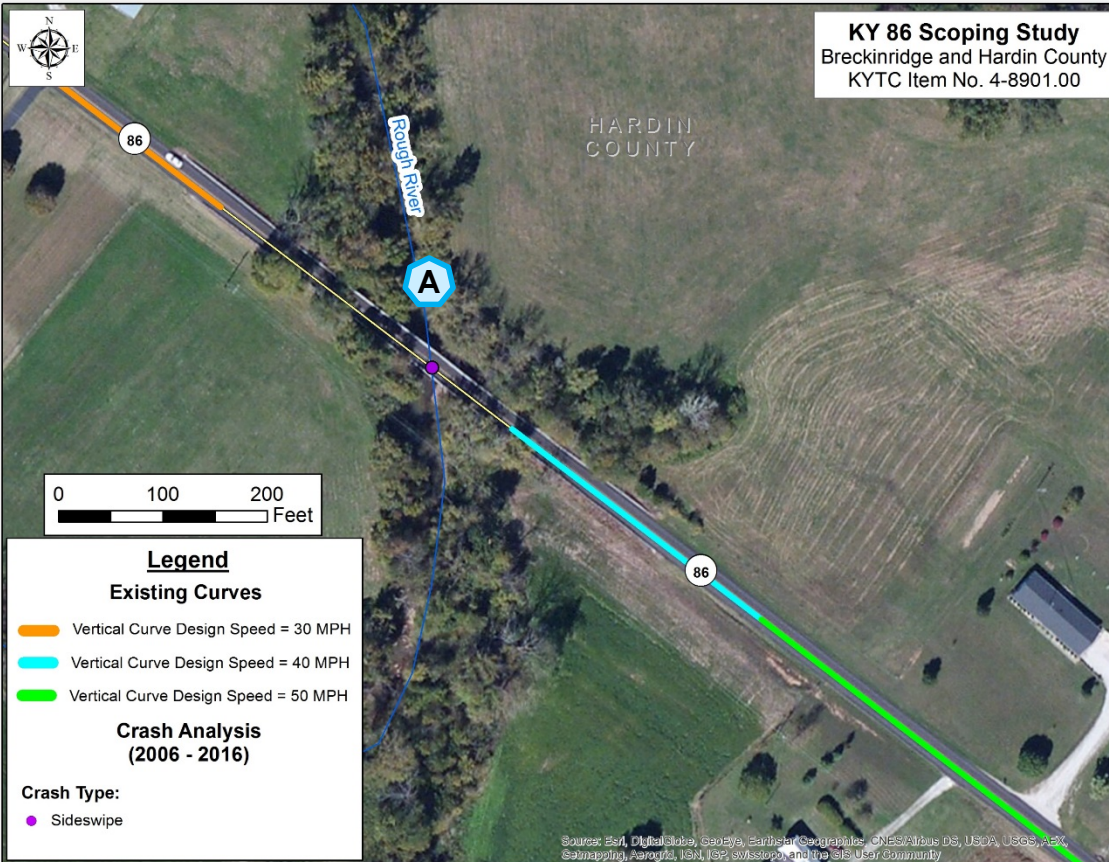
Existing Conditions

- 1 Reported Crash from 2006 to 2016
- Crash Severity: PDO
- Crash Type: 1 Sideswipe

- Functionally Obsolete Bridge with Sufficiency Rating = 66
- 19-ft Roadway Width on Bridge
- Poor Stopping Sight Distance
- Excessive Travel Speeds
- Identified by Local Officials

Improvement Options

Label	Improvement	Cost Estimate
A	Remove Vegetation	\$900,000
	Replace Bridge	
Total Construction Cost Estimate		\$900,000





KY 86 Spot Improvement 12

KY 920 Intersection

Hardin County (KY 86 MP 5.200 to MP 5.499)



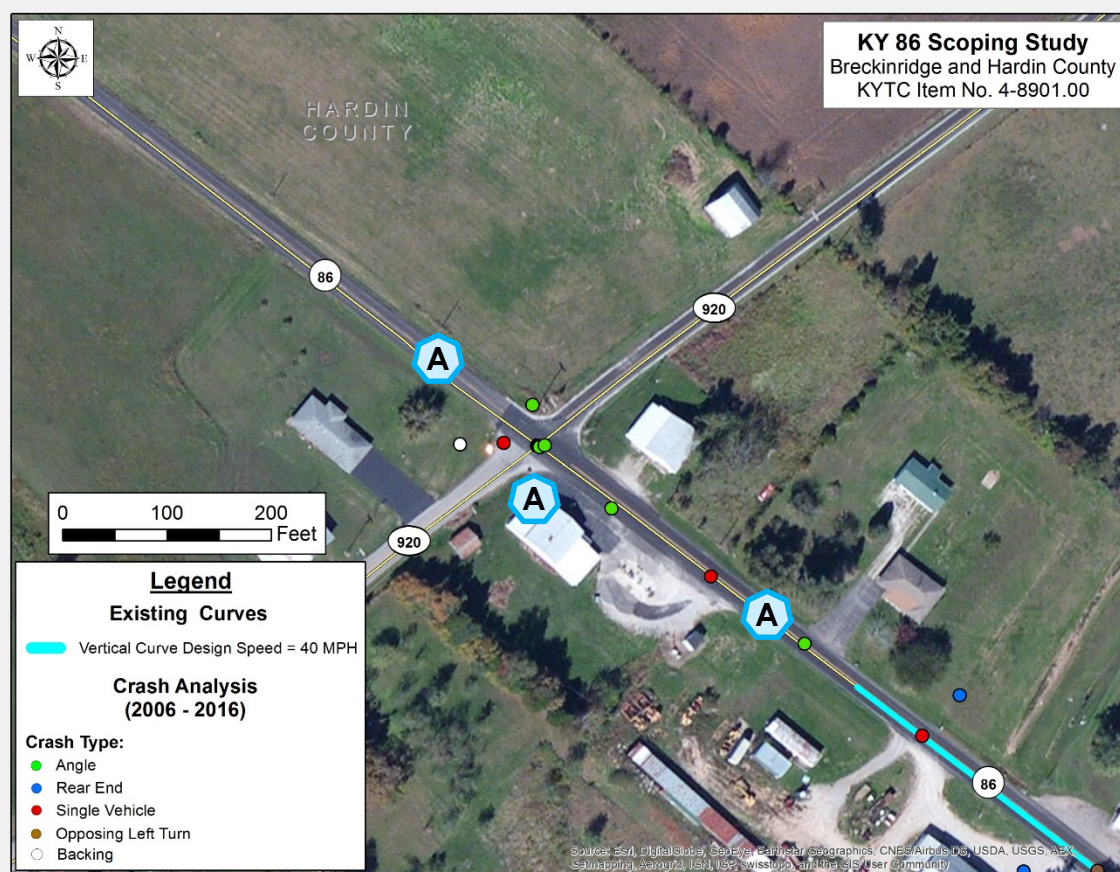
Existing Conditions

- 1 High Crash Spot with CRF 1.70
- 15 Reported Crashes from 2006 to 2016 (5 Injury and 10 PDO)

- Passing Permitted Striping through Congested Area
- Excessive Travel Speeds
- Multiple Access Points
- Identified by Local Officials

Improvement Options

Label	Improvement	Cost Estimate
A	Access Management at Fields Grocery	\$50,000
	Remove Passing Permitted Striping	
Total Construction Cost Estimate		\$50,000





KY 86 Spot Improvement 13

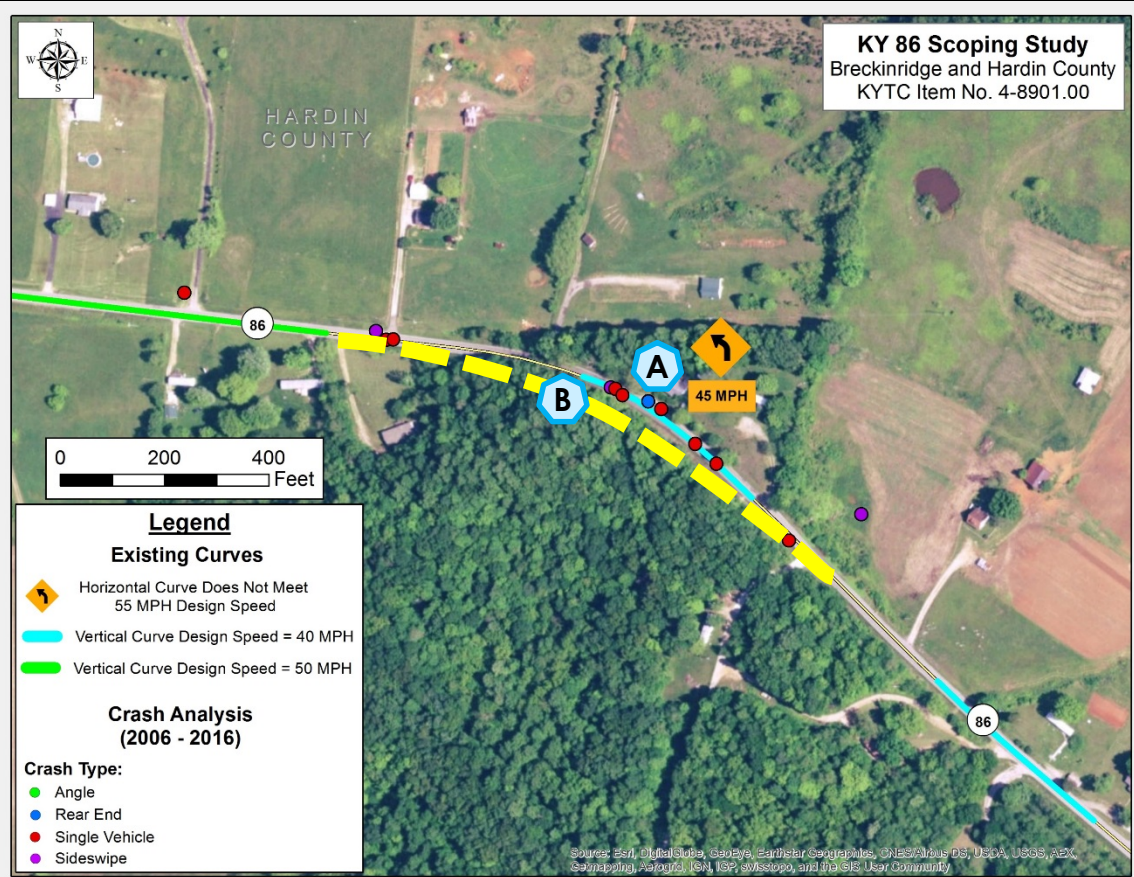
East of Wright Lane (Cherry Tree Coon Hunters Club)

Hardin County (KY 86 MP 9.200 to MP 9.600)



Existing Conditions

- 2 High Crash Spots with CRF's 1.21 to 1.70
- 13 Reported Crashes from 2006 to 2016 (3 Injury and 10 PDO)
- Combination of Sharp Curve and Poor Stopping Sight Distance
- Steep Roadside Ditch
- Identified by Local Officials
- Excessive Travel Speeds



Improvement Options

Label	Improvement	Cost Estimate
A	Remove Vegetation at Horizontal Curve	\$250,000
	Widen Shoulders at Horizontal Curve	
	Flexible Delineators at Horizontal Curve	
	High-Friction Pavement Surface at Horizontal Curve	
B	Realignment	\$800,000
Total Construction Cost Estimate		\$250,000 or \$800,000



KY 86 Spot Improvement 14

Yates Chapel Road

Hardin County (KY 86 MP 9.900 to MP 10.300)



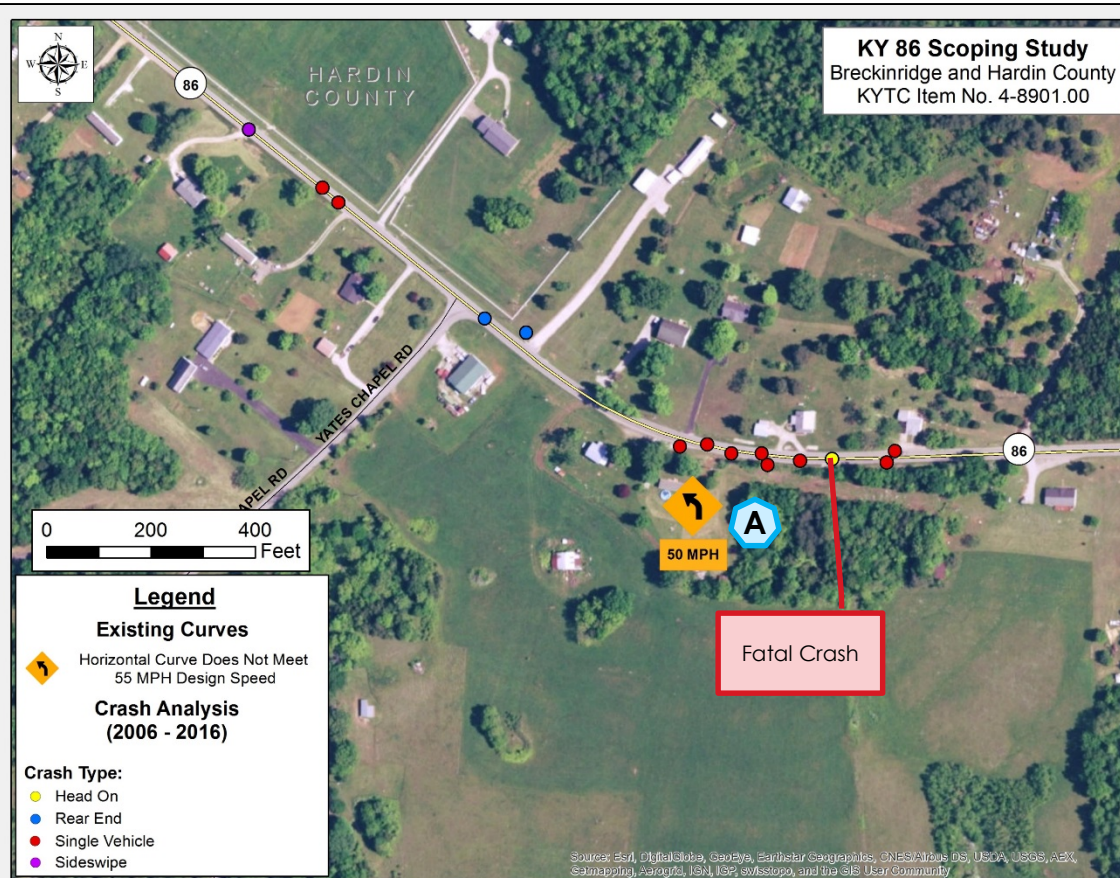
Existing Conditions

- 1 High Crash Spot with CRF 1.21.
- 14 Reported Crashes from 2006 to 2016 (1 Fatal, 7 Injury, and 6 PDO)

- Sharp Curve
- Congested Area with Multiple Driveways
- Excessive Travel Speeds

Improvement Options

Label	Improvement	Cost Estimate
A	Widen Shoulders at Horizontal Curve	\$250,000
	Flexible Delineators at Horizontal Curve	
	High-Friction Pavement Surface at Horizontal Curve	
Total Construction Cost Estimate		\$250,000





KY 86 Spot Improvement 15

James Duvall Lane

Hardin County (KY 86 MP 10.300 to MP 11.200)



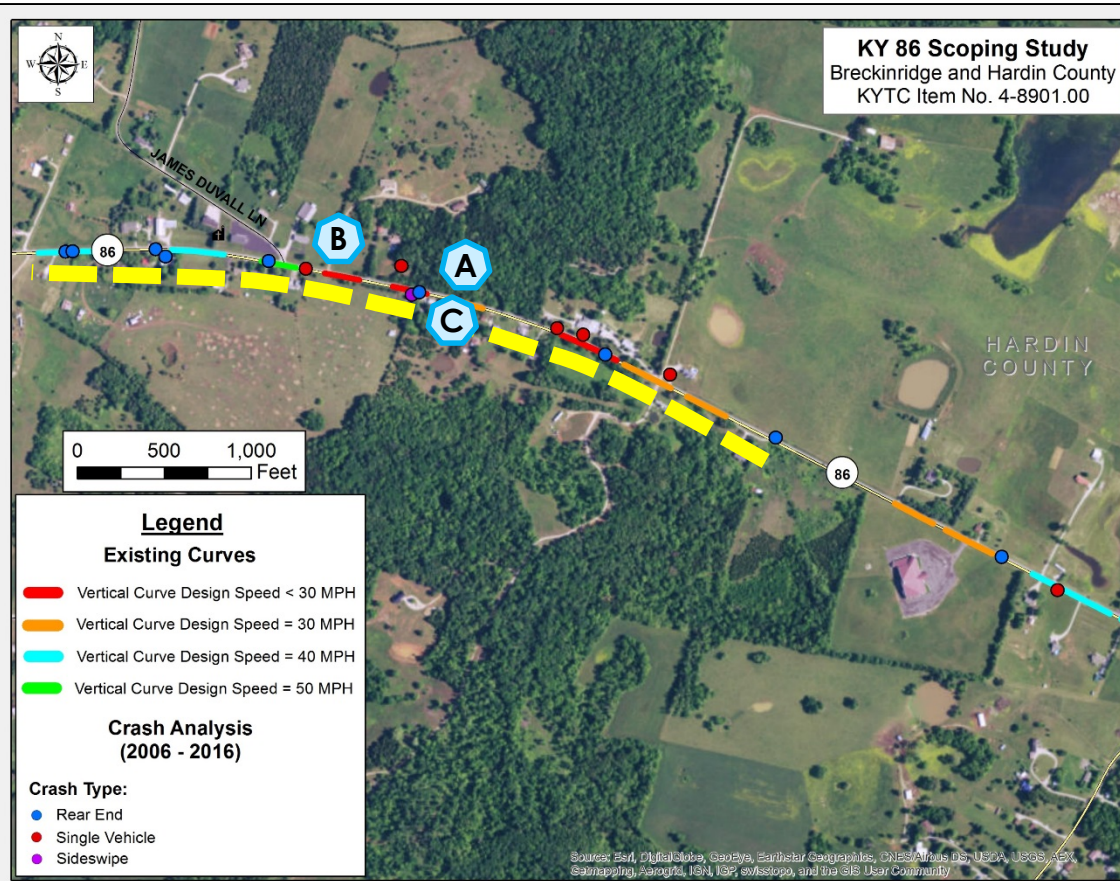
Existing Conditions

- 1 High Crash Spot with CRF 1.21.
- 16 Reported Crashes from 2006 to 2016 (5 Injury and 11 PDO)

- Poor Stopping Sight Distance
- Congested Area with Multiple Driveways
- Ponding on KY 86
- Excessive Travel Speeds

Improvement Options

Label	Improvement	Cost Estimate
A	Remove Vegetation	\$30,000
B	Fix Ponding	\$100,000
C	Realignment	\$1,600,000
Total Construction Cost Estimate		\$130,000 or \$1,600,000





KY 86 Spot Improvement 16

KY 1375 Intersection

Hardin County (KY 86 MP 11.700 to MP 11.850)



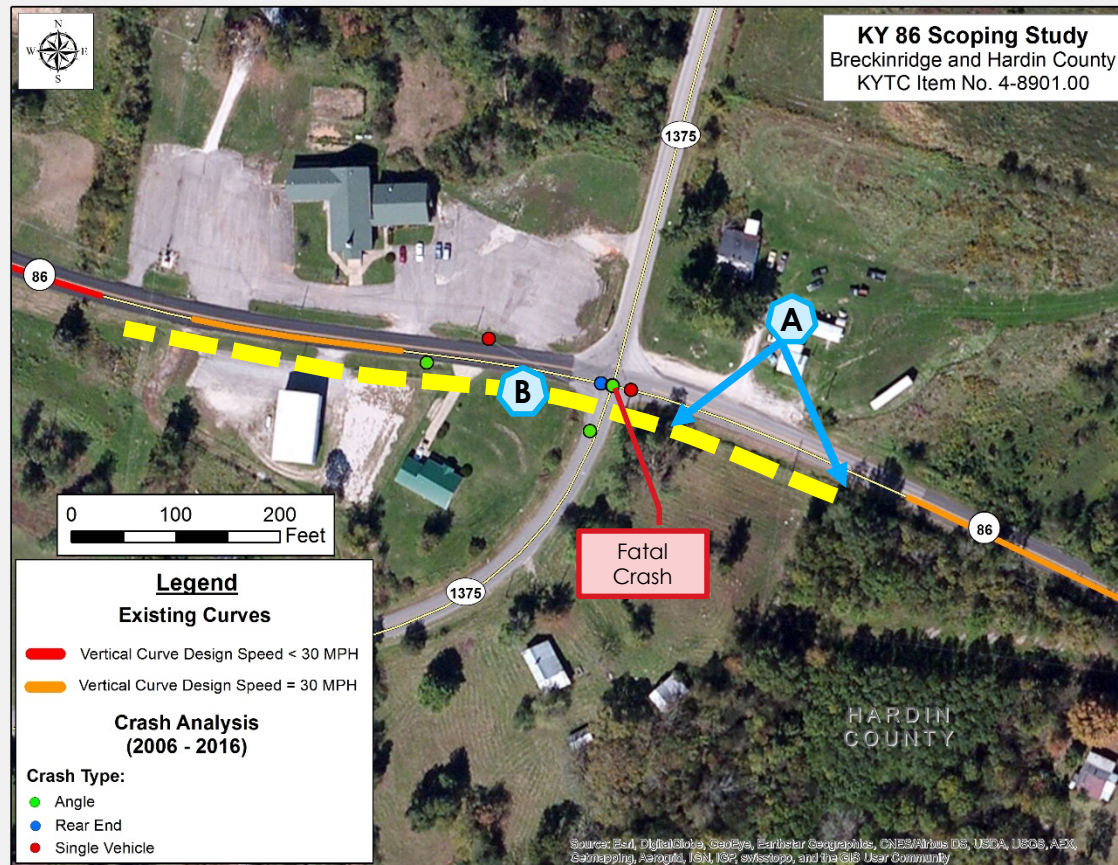
Existing Conditions

- 1 High Crash Spot with CRF 1.37
- 9 Reported Crashes from 2006 to 2016 (1 Fatal and 8 PDO)

- Poor Stopping Sight Distance
- Congested Area with Multiple Driveways
- Overgrown Vegetation
- Identified by Local Officials
- Ponding at KY 1375 intersection

Improvement Options

Label	Improvement	Cost Estimate
A	Remove Vegetation	\$20,000
B	Realign Vertical Alignment	\$600,000
Total Construction Cost Estimate		\$20,000 or \$600,000





KY 86 Spot Improvement 17

Culvert at Blacks Branch Creek

Hardin County (KY 86 MP 12.833 to MP 12.916)



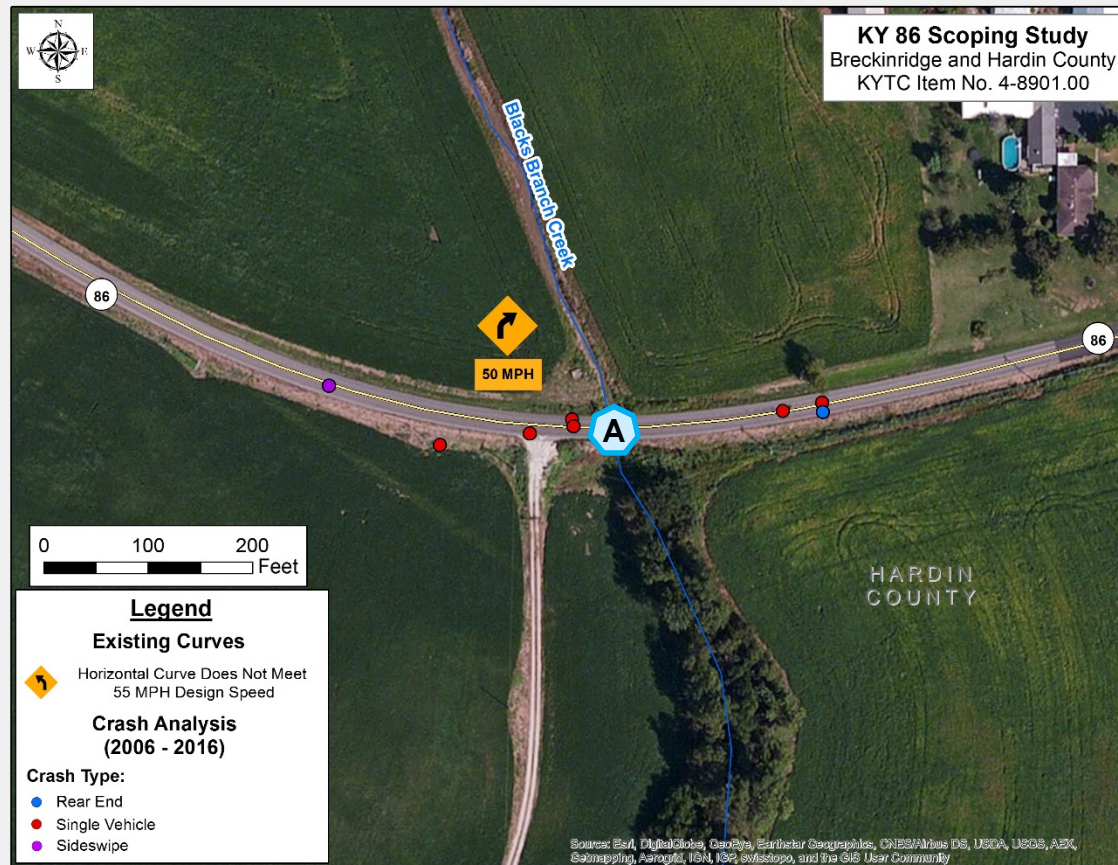
Existing Conditions

- 8 Reported Crashes from 2006 to 2016 (1 Injury, 7 PDO)
- Crash Types: 6 Single Vehicle, 1 Rear End, 1 Sideswipe

- Curve at Narrow Culvert Crossing
- Culvert Sufficiency Rating = 58
- Large Farming Equipment Using KY 86
- Steep Roadside Ditches
- Identified by Local Officials

Improvement Options

Label	Improvement	Cost Estimate
A	Lengthen Culvert and Improve Clear Zone	\$100,000
Total Construction Cost Estimate		\$100,000





KY 86 Spot Improvement 18

South Black Branch Road

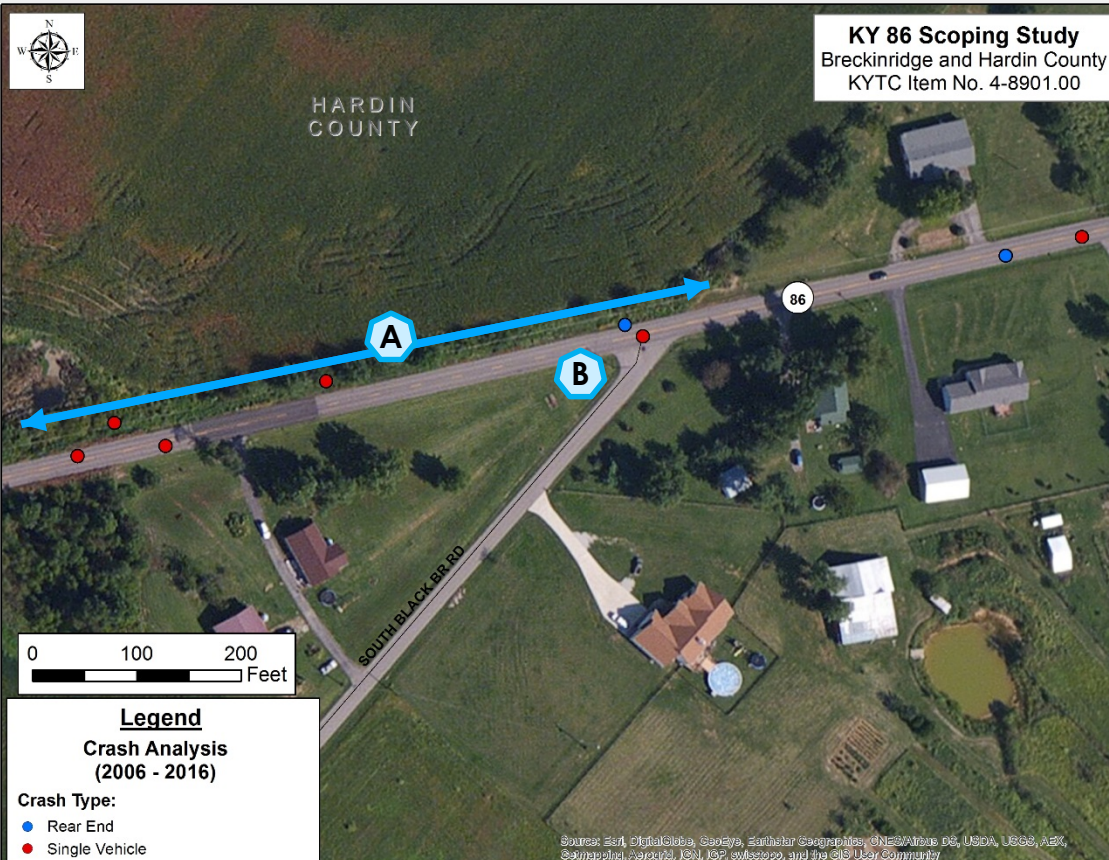
Hardin County (KY 86 MP 14.200 to MP 14.500)



Existing Conditions

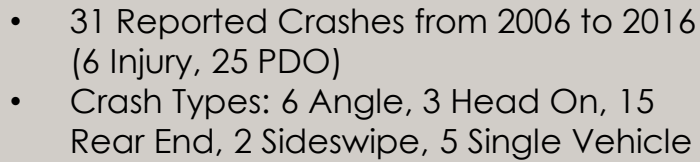
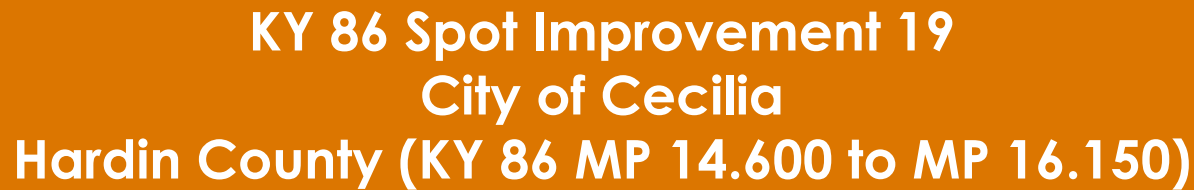
- 1 High Crash Spot with CRF 1.51
- 8 Reported Crashes from 2006 to 2016 (2 Injury, 6 PDO)
- 6 Single Vehicle and 2 Rear End

- Poor Stopping Sight Distance
- Large Farming Equipment Using KY 86
- Passing Vehicles
- Steep Roadside Ditch
- Utility Pole at S. Black Branch Intersection



Improvement Options

Label	Improvement	Cost Estimate
A	Widen Shoulders/Improve Clear Zone	\$100,000
B	Relocate Utility Pole	\$15,000
Total Construction Cost Estimate		\$15,000 to \$115,000



- Poor Stopping Sight Distance at KY 253/Lewis Lane
- Multiple Access Points
- Flood Prone Area Near Rail Crossing
- Identified by Local Officials

Improvement Options

KY 86 Scoping Study
Breckinridge and Hardin County
KYTC Item No. 4-8901.00

Legend

Existing Curves

- Horizontal Curve Does Not Meet 55 MPH Design Speed
- Vertical Curve Design Speed < 30 MPH
- Vertical Curve Design Speed = 30 MPH
- Vertical Curve Design Speed = 40 MPH

Crash Analysis (2006 - 2016)

Crash Type:

- Angle
- Rear End
- Sideswipe
- Single Vehicle

Map labels include: PARK LN, TEMPLEMAN ST, SOUTH RAILROAD ST, MILL ST, FEDERAL ST, CECIL AVE, NORTH BLACK, HACKBERRY RD, GREENCREST DR, LOMBARDY DR, LONE OAK RD, CHURCH AVE, MAPLE DR, WOODLAND WAY, and 86. A scale bar indicates 0, 500, and 1,000 feet. A north arrow is present in the top left corner.