

# Appendix D

## KYTC Traffic Forecast



**TRANSPORTATION CABINET**

Frankfort, Kentucky 40622  
www.transportation.ky.gov/

**Steven L. Beshear**  
Governor

**Michael W. Hancock, P.E.**  
Secretary


---

**MEMORANDUM**

---

**TO:** Joseph McClearn, P.E.  
Chief District Engineer  
District 2 - Madisonville

**ATTN:** Nick Hall

**FROM:** John Moore, P.E.  
Director  
Division of Planning 

**DATE:** February 26, 2014

**SUBJECT:** Christian and Hopkins County Traffic Forecast  
Breathitt Parkway Deficiencies Study  
Item No. N/A

In response to your July 1, 2014 request, we are providing the following forecasts on the attached report:

- 2014 and 2040 Average Daily Traffic
- 2014 and 2040 Peak Hour Traffic
- 2014 and 2040 Daily Truck Percentages

If you have any questions, please call Daniel Hulker of this Division at (502) 782-5064.

JM/DAH/BC

Attachments

c/att: Charles Martin  
John Rudd  
Paul Looney  
Dan Hite  
Shane McKenzie  
Mikael Pelfrey



# *Executive Summary*

## **Traffic Forecast Report Christian and Hopkins County Traffic Forecast for Breathitt Parkway Deficiencies Study**

Prepared for:



Prepared by:  
**Daniel Hulker**  
Division of Planning  
Kentucky Transportation Cabinet  
February 25, 2014

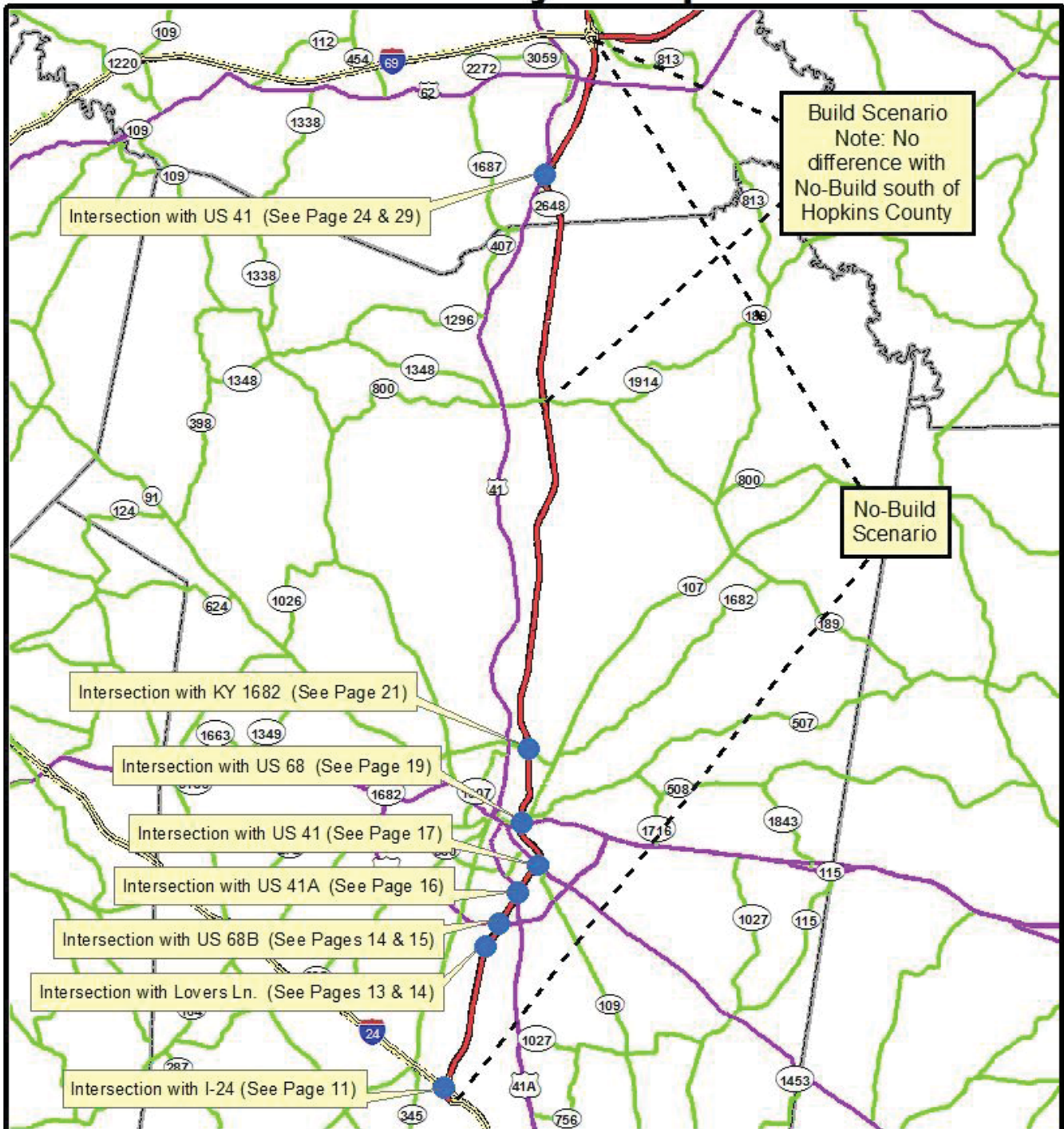
## **Table of Contents**

Vicinity Map.....	Page 2
Executive Summary .....	Page 3
Population Summaries .....	Page 5
Segment Summaries .....	Page 7
No-Build Summary Maps .....	Page 10
Build Summary Maps .....	Page 27

## **Commonly Used Abbreviations and their Descriptions**

ADT	Average Daily Traffic	Without any adjustment
DHV	Design Hour Volume	30 <sup>th</sup> highest hour of a <u>year</u>
ESAL	Equivalent Single Axle Load	A measure of traffic’s impact on roadway
%T	Truck Percentage	The percentage of trucks to total volume
FC	Functional Class	Refers to a road’s importance
GR	Growth Rate	A value normally compounded annually
PHF	Peak Hour Factor	Considers a 15 minute spike in an hourly count
K-Factor	K-30 <sup>th</sup> hour Factor	DHV divided by ADT (DHV/ADT)
D-Factor	Directional Factor	Percentage of dominant flow to total
MP	Mile Point	Miles increase easterly and northerly
ATR	Automatic Traffic Recorder	A permanent & continuous recording station
KYSTM	Kentucky Statewide Model	A computerized representation of KY roads

# Vicinity Map



<p><b>LEGEND</b></p> <p> N</p> <p> Intersection</p> <p> Parkway</p>	<p>Christian and Hopkins County                  Breathitt Parkway                  Deficiencies Study</p>	<p>KENTUCKY                  TRANSPORTATION                  CABINET</p>	<p><b>Kentucky</b>                  UNRAVELED SPIRIT</p> <p>0 1 2 4 6                  Miles</p>
---	--	--	--

## **Traffic Forecast Executive Summary**

### **Christian and Hopkins County: Traffic Forecast for Breathitt Parkway Deficiencies Study**

#### **FORECAST SUMMARY**

This traffic forecast is for the Breathitt Parkway Deficiencies Study. The forecast covers Breathitt Parkway from its beginning at the intersection of Interstate 24 in Christian County to milepoint 33.566 in Hopkins County. Ramps at certain intersections are also covered in this report. A No-Build scenario was developed that assumed no additional ramps would be constructed at the partial interchange in Hopkins County at Exit 30. An alternative scenario was developed that would turn Exit 30 from a partial interchange into a full interchange. There were other proposed changes to the geometry of the Breathitt Parkway including a proposal to reconstruct Exit 11 from its current configuration to a diamond interchange. These changes were not expected to significantly alter traffic volumes so no separate alternatives were developed for them.

#### **FORECAST TYPE**

The following types of forecasts were developed for the No-Build and the Build Scenarios:

- 2014 and 2040 ADT volumes
- 2014 and 2040 AM and PM peak hour volumes
- 2014 and 2040 Daily Truck Percentages

#### **CURRENT-YEAR VOLUMES**

The current year volumes were based upon the ramp counts done by Qk4 in 2013 as well as the most recent volume and class counts on the Breathitt Parkway done by KYTC.

<b>Station</b>	<b>County</b>	<b>Milepoint</b>	<b>ADT</b>	<b>Year</b>
054-262	Hopkins	33.5	14,600	2012
054-264	Hopkins	32	11,700	2012
024-105	Christian	23.1	10,900	2012
024-123	Christian	22	11,500	2012
024-A81	Christian	11.425	11,800	2011
024-A73	Christian	8.6	16,100	2012
024-A82	Christian	7.3	12,700	2012
024-D07	Christian	6.292	11,200	2012
024-D06	Christian	5.467	8,600	2012
024-566	Christian	2.587	9,500	2012

The ADT volumes for the Breathitt Parkway on the segment charts and the summary maps will differ from the most recent counts due to balancing volumes. This variance is due to ramp and mainline volume counts not being measured on the same days.

### **DESIGN-YEAR/GROWTH FACTORS**

The growth rates of the Breathitt Parkway were determined by cross streets of each intersection, historic parkway counts, the statewide model, and the US Census projections. The US census projects Christian County's population to grow at a rate of 2% through to 2035. Hopkins County's population is projected to decrease at a rate of -0.04% through to 2035. Each cross street's historic growth rate was examined to determine the rate at which ramps connecting the streets to the Breathitt Parkway might also increase in traffic. The overall increase in ramp traffic drove the increases in Breathitt Parkway traffic and was consistent with the rate of traffic growth predicted by the Kentucky Statewide Model or about 1% annually.

### **DESIGN HOUR FACTORS**

The design hour factor was determined by the peak hour of traffic of each ramp count or the most recent count of each section of the Breathitt Parkway.

### **TRUCK PERCENTAGE**

Where possible, mainline Breathitt Parkway truck counts were used to estimate the truck percentages and other sections of the Breathitt Parkway were estimated based upon the sections of the parkway with available class count data. Ramp truck percentages were based upon the functional class averages of the cross streets they intersected.

### **ESALs**

The ESAL values were not requested and therefore not included.

### **TURN MOVEMENTS**

Turn movements were not requested and therefore not included.



**HISTORICAL POPULATION SUMMARY**

	1960	1970	1980	1990	2000	2010	60 - 70	70 - 80	80 - 90	90 - 00	00 - 10
Population	3,038,156	3,220,711	3,660,334	3,666,892	4,041,769	4,339,367	Change 6.0%	Change 13.6%	Change 0.7%	Change 9.6%	Change 7.4%
Christian Co	-	56,224	66,878	68,941	72,265	73,955	Pct -	Pct 18.9%	Pct 3.1%	Pct 4.8%	Pct 2.3%

Sources: US Bureau of the Census; Kentucky State Data Center

**FUTURE POPULATION PROJECTIONS SUMMARY**

	2010	2015	2020	2025	2030	2035	10 - 15	15 - 20	20 - 25	25 - 30	30 - 35
Projection	4,339,367	4,506,569	4,669,801	4,838,370	5,001,748	5,147,274	Change 3.9%	Change 3.6%	Change 3.6%	Change 3.4%	Change 2.9%
Christian Co	73,955	91,158	98,768	106,897	115,451	124,142	Pct 23.3%	Pct 8.3%	Pct 8.2%	Pct 8.0%	Pct 7.5%

Sources: US Bureau of the Census; Kentucky State Data Center

**ANNUAL POPULATION GROWTH RATES FROM HISTORICAL DATA AND PROJECTIONS**

	60 - 70	70 - 80	80 - 90	90 - 00	05 - 10	10 - 15	15 - 20	20 - 25	25 - 30	10 - 30
GR	0.59%	1.29%	0.07%	0.92%	0.76%	0.71%	0.71%	0.67%	0.58%	0.55%
Christian Co	-	1.75%	0.30%	0.47%	4.27%	1.62%	1.59%	1.55%	1.46%	1.86%



**HISTORICAL POPULATION SUMMARY**

	1960	1970	1980	1990	2000	2010	60 - 70	70 - 80	80 - 90	90 - 00	00 - 10
	Population	Population	Population	Population	Population	Population	Pct	Pct	Pct	Pct	Pct
Kentucky	3,038,156	3,220,711	3,660,334	3,686,892	4,041,769	4,339,367	6.0%	13.6%	0.7%	9.6%	7.4%
Hopkins Co	-	38,167	46,174	46,126	46,519	46,920	-	21.0%	-0.1%	0.9%	0.9%
							Change	Change	Change	Change	Change

Sources: US Bureau of the Census; Kentucky State Data Center

**FUTURE POPULATION PROJECTIONS SUMMARY**

	2010	2015	2020	2025	2030	2035	10 - 15	15 - 20	20 - 25	25 - 30	30 - 35
	Projection	Projection	Projection	Projection	Projection	Projection	Pct	Pct	Pct	Pct	Pct
Kentucky	4,339,367	4,506,569	4,669,801	4,838,370	5,001,748	5,147,274	3.9%	3.6%	3.6%	3.4%	2.9%
Hopkins Co	46,920	46,823	46,951	46,898	46,759	46,472	-0.2%	0.3%	-0.1%	-0.3%	-0.6%
							Change	Change	Change	Change	Change

Sources: US Bureau of the Census; Kentucky State Data Center

**ANNUAL POPULATION GROWTH RATES FROM HISTORICAL DATA AND PROJECTIONS**

	60 - 70	70 - 80	80 - 90	90 - 00	05 - 10	10 - 15	15 - 20	20 - 25	25 - 30	10 - 30
	GR	GR	GR	GR	GR	GR	GR	GR	GR	GR
Kentucky	0.59%	1.29%	0.07%	0.92%	0.76%	0.71%	0.67%	0.58%	0.55%	0.69%
Hopkins Co	-	1.92%	-0.01%	0.08%	-0.04%	0.05%	-0.02%	-0.12%	0.00%	-0.04%

Traffic Forecast Technical Report  
 Christian & Hopkins County: Traffic Forecast for Breathitt Parkway Deficiencies Study

NO BUILD SEGMENT INFORMATION										Flow		ADT		ADT		AM Peak		PM Peak		Truck %		See Map
ROUTE UNIQUE ID	BMP	EMP	RD NAME	Flow	DIR	2014	2040	GR	2014	2040	2014	2040	2014	2040	2014	2040	2014	2040	2014	2040	on Page	
054-EB-9004 -000	32.861	33.566	Edward T Breathitt Parkway	BOTH	BOTH	14,600	18,800	1.0%	900	1,200	1,100	1,400	15%	18%	26							
054-EB-9004 -000	29.568	32.861	Edward T Breathitt Parkway	BOTH	BOTH	11,600	15,100	1.0%	810	1,100	930	1,200	15%	18%	25							
054-EB-9004 -131	0	0.463	EB Parkway Ramp to US 41	SB	SB	300	350	0.5%	20	30	30	40	20%	23%	24							
054-EB-9004 -121	0	0.825	EB Parkway Ramp from US 41	NB	NB	300	350	0.5%	30	40	30	40	20%	23%	24							
024-EB-9004 -000	22.641	29.568	Edward T Breathitt Parkway	BOTH	BOTH	11,000	14,400	0.3%	770	1,000	880	1,200	15%	18%	23							
024-EB-9004 -000	11.7	22.641	Edward T Breathitt Parkway	BOTH	BOTH	9,800	13,100	1.1%	690	920	780	1,000	15%	18%	22							
024-EB-9004 -431	0	0.207	EB Parkway Ramp from KY 1682	SB	SB	3,000	3,900	1.0%	320	420	210	280	10%	14%	21							
024-EB-9004 -421	0	0.2	EB Parkway Ramp to KY 1682	NB	NB	2,900	3,800	1.0%	210	280	310	410	10%	14%	21							
024-EB-9004 -441	0	0.194	EB Parkway Ramp to KY 1682	SB	SB	700	900	1.0%	60	80	60	80	10%	14%	21							
024-EB-9004 -411	0	0.183	EB Parkway Ramp from KY 1682	NB	NB	800	1,000	1.0%	60	80	80	100	10%	14%	21							
024-EB-9004 -000	9.347	11.7	Edward T Breathitt Parkway	BOTH	BOTH	14,200	18,900	1.1%	1,200	1,600	1,300	1,700	15%	18%	20							
024-EB-9004 -331	0	0.239	EB Parkway Ramp to US 68	SB	SB	900	1,200	1.2%	110	150	70	90	10%	14%	19							
024-EB-9004 -321	0	0.269	EB Parkway Ramp from US 68	NB	NB	900	1,200	1.2%	70	90	90	120	10%	14%	19							
024-EB-9004 -341	0	0.36	EB Parkway Ramp from US 68	SB	SB	2,400	3,300	1.2%	190	260	200	280	10%	14%	19							
024-EB-9004 -311	0	0.363	EB Parkway Ramp to US 68	NB	NB	2,400	3,300	1.2%	180	250	200	280	10%	14%	19							
024-EB-9004 -000	7.915	9.347	Edward T Breathitt Parkway	BOTH	BOTH	17,200	23,100	1.2%	1,400	1,900	1,500	2,000	15%	18%	18							
024-EB-9004 -231	0	0.246	EB Parkway Ramp to US 41	SB	SB	2,300	3,400	1.5%	250	370	160	240	10%	14%	17							
024-EB-9004 -221	0	0.369	EB Parkway Ramp from US 41	NB	NB	2,200	3,200	1.5%	120	180	250	360	10%	14%	17							
024-EB-9004 -241	0	0.362	EB Parkway Ramp from US 41	SB	SB	1,800	2,700	1.5%	110	170	190	290	10%	14%	17							
024-EB-9004 -211	0	0.321	EB Parkway Ramp to US 41	NB	NB	1,700	2,500	1.5%	160	240	120	180	10%	14%	17							
024-EB-9004 -000	6.826	7.915	Edward T Breathitt Parkway	BOTH	BOTH	16,200	21,700	1.1%	1,200	1,600	1,500	2,000	15%	18%	17							
024-EB-9004 -131	0	0.259	EB Parkway Ramp to US 41A	SB	SB	4,400	5,700	1.0%	320	420	360	470	10%	14%	16							
024-EB-9004 -121	0	0.594	EB Parkway Ramp from US 41A	NB	NB	4,600	6,000	1.0%	280	370	420	550	10%	14%	16							
024-EB-9004 -141	0	0.383	EB Parkway Ramp from US 41A	SB	SB	2,200	2,800	1.0%	110	140	240	300	10%	14%	16							
024-EB-9004 -111	0	0.425	EB Parkway Ramp to US 41A	NB	NB	2,000	2,600	1.0%	200	260	170	220	10%	14%	16							

↑ North

\* All Figures are subject to rounding and balancing and should not be taken as indicative of accuracy beyond two significant digits.



Traffic Forecast Technical Report  
 Christian & Hopkins County: Traffic Forecast for Breathitt Parkway Deficiencies Study

NO BUILD SEGMENT INFORMATION		Flow		ADT		ADT		AM Peak		PM Peak		Truck %		See Map
ROUTE UNIQUE ID	BMP	EMP	RD NAME	DIR	2014	2040	GR	2014	2040	2014	2040	2014	2040	on Page
024-EB-9004 -000	5.759	6.826	Edward T Breathitt Parkway	BOTH	14,000	15,400	0.4%	1,100	1,200	1,300	1,400	16%	20%	16
024-EB-9004 -631	0	0.457	EB Parkway Ramp to US 68B	SB	2,300	3,400	1.5%	170	250	250	370	10%	14%	15
024-EB-9004 -621	0	0.455	EB Parkway Ramp from US 68B	NB	2,000	2,900	1.5%	200	290	160	230	10%	14%	15
024-EB-9004 -641	0	0.258	EB Parkway Ramp from US 68B	SB	1,500	2,200	1.5%	170	250	120	180	10%	14%	14
024-EB-9004 -611	0.774	0.91	EB Parkway Ramp to US 68B	NB	1,200	1,800	1.5%	90	140	150	230	10%	14%	14
024-EB-9004 -612	0	0.2	EB Parkway Ramp to US 68B	NB	100	200	1.5%	10	20	10	20	10%	14%	14
024-EB-9004 -611	0	0.774	EB Parkway Ramp to US 68B	NB	1,100	1,600	1.5%	80	120	140	200	10%	14%	13, 14
024-EB-9004 -000	5.175	5.759	Edward T Breathitt Parkway	BOTH	8,700	10,700	1.0%	750	920	850	1,000	17%	21%	14
024-EB-9004 -721	0.268	0.412	EB Parkway Ramp from Lovers Ln.	NB	400	600	1.5%	60	90	40	60	10%	14%	14
024-EB-9004 -721	0	0.268	EB Parkway Ramp from Lovers Ln.	NB	500	700	1.5%	40	60	70	100	10%	14%	14
024-EB-9004 -744	0	0.157	EB Parkway Ramp to Lovers Ln.	SB	400	600	1.5%	20	30	60	90	10%	14%	13
024-EB-9004 -741	0	0.362	EB Parkway Ramp from Lovers Ln.	SB	100	150	1.5%	15	20	10	15	10%	14%	13
024-EB-9004 -711	0	0.129	EB Parkway Ramp to Lovers Ln.	NB	1,200	1,800	1.5%	90	140	160	230	10%	14%	13
024-EB-9004 -711	0.129	0.446	EB Parkway Ramp to Lovers Ln.	NB	100	150	1.5%	10	20	20	30	10%	14%	13
024-EB-9004 -000	0	5.175	Edward T Breathitt Parkway	BOTH	9,100	12,000	1.1%	800	1,100	900	1,200	22%	25%	12
024-I-0024 -441	0	0.569	I-24 Ramp from EB Parkway	SB	250	350	0.5%	30	40	40	50	22%	25%	11
024-I-0024 -431	0	0.555	I-24 Ramp from EB Parkway	NB	4,100	5,400	1.1%	300	400	390	510	22%	25%	11
024-I-0024 -421	0	0.741	I-24 Ramp from EB Parkway	SB	4,500	5,900	0.7%	350	460	300	390	22%	25%	11
024-EB-9004 -000	0	0.204	Parkway Ramp From I-24 to EB Parkway	NB	250	350	0.5%	30	40	40	50	22%	25%	11

North ↑

\* All Figures are subject to rounding and balancing and should not be taken as indicative of accuracy beyond two significant digits.

Traffic Forecast Technical Report  
 Christian & Hopkins County: Traffic Forecast for Breathitt Parkway Deficiencies Study

BUILD SEGMENT INFORMATION													
ROUTE UNIQUE ID	BMP	EMP	RD NAME	Flow	ADT		ADT GR	AM Peak		PM Peak		T%	See Map on Page
					2014	2040		2014	2040	2014	2040		
054-EB-9004 -000	32.861	33.566	Edward T Breathitt Parkway	BOTH	14,000	18,200	1.0%	950	1,200	1,100	1,400	15%	18%
054-EB-9004 -000	29.568	32.861	Edward T Breathitt Parkway	BOTH	11,000	14,400	1.0%	800	1,100	900	1,200	15%	18%
054-EB-9004 -131	0	0.463	EB Parkway Ramp to US 41	SB	300	350	0.5%	20	30	30	40	20%	23%
054-EB-9004 -121	0	0.825	EB Parkway Ramp from US 41	NB	300	350	0.5%	30	40	30	40	20%	23%
Unknown	N/A	N/A	New Ramp from US 41 to EB Parkway	SB	300	350	0.5%	20	30	30	40	20%	23%
Unknown	N/A	N/A	New Ramp from EB Parkway to US 41	NB	300	350	0.5%	30	40	30	40	20%	23%
024-EB-9004 -000	22.641	29.568	Edward T Breathitt Parkway	BOTH	11,000	14,400	0.3%	770	1,000	880	1,200	15%	18%

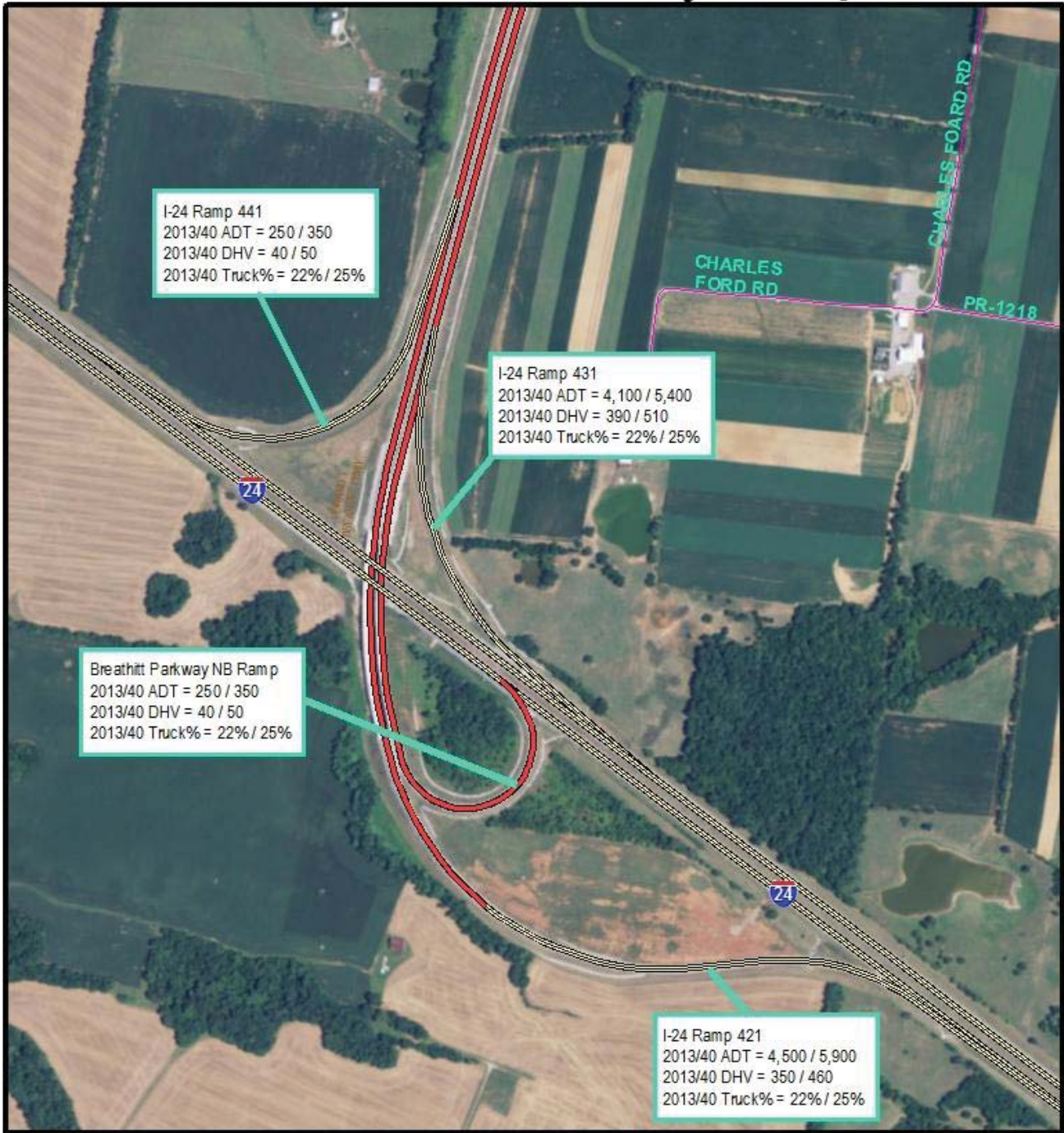
North ←

\* All Figures are subject to rounding and balancing and should not be taken as indicative of accuracy beyond two significant digits.  
 \*The Build scenario does not differ from the No-Build scenario south of EB parkway Milepoint 29

# No-Build Summary Maps



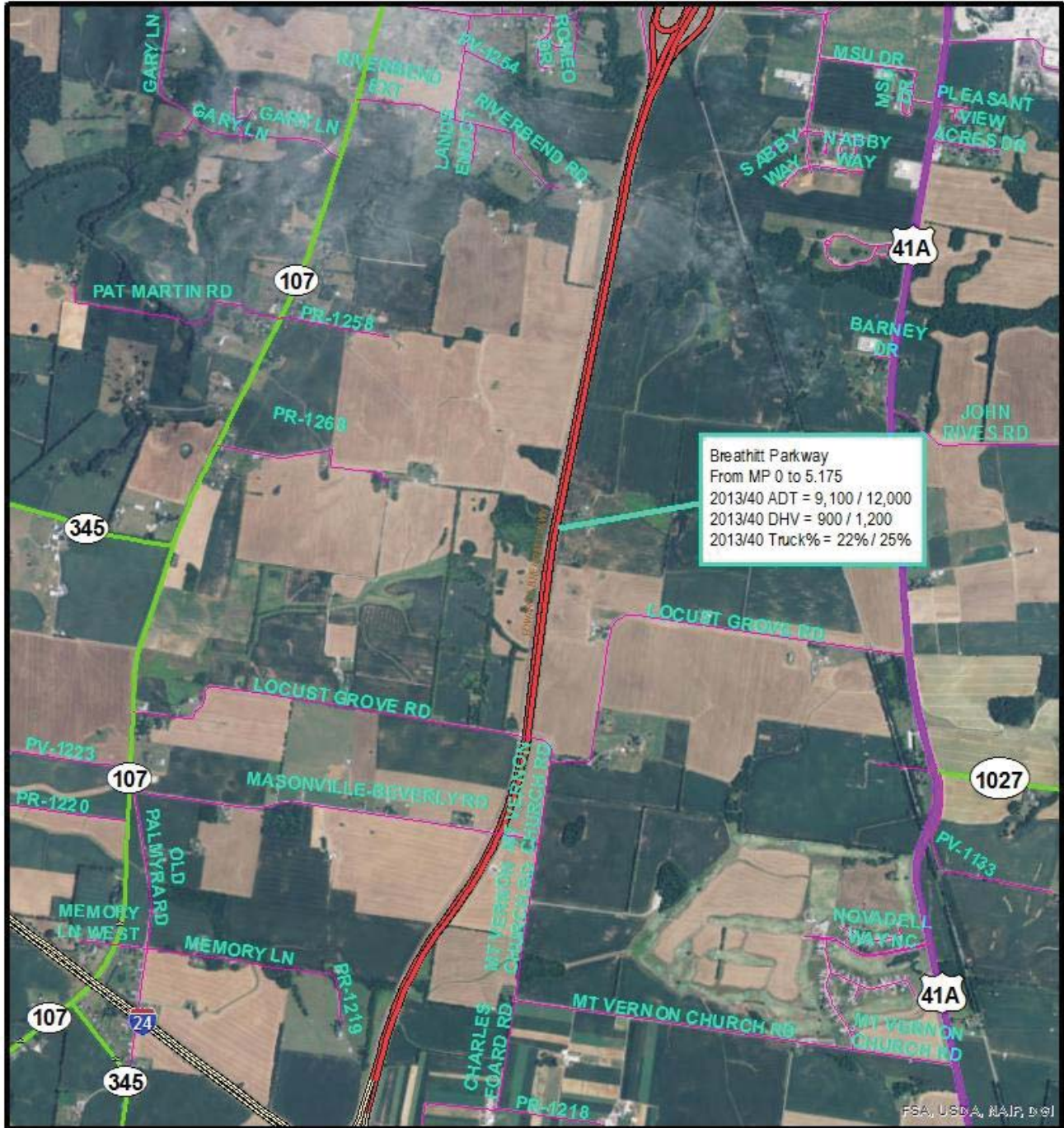
# No Build Summary Map 1



	<b>LEGEND</b> Breathitt Parkway 	Christian County Breathitt Parkway Deficiencies Study No Build Scenario			0 0.05 0.1 0.2 0.3 Miles 



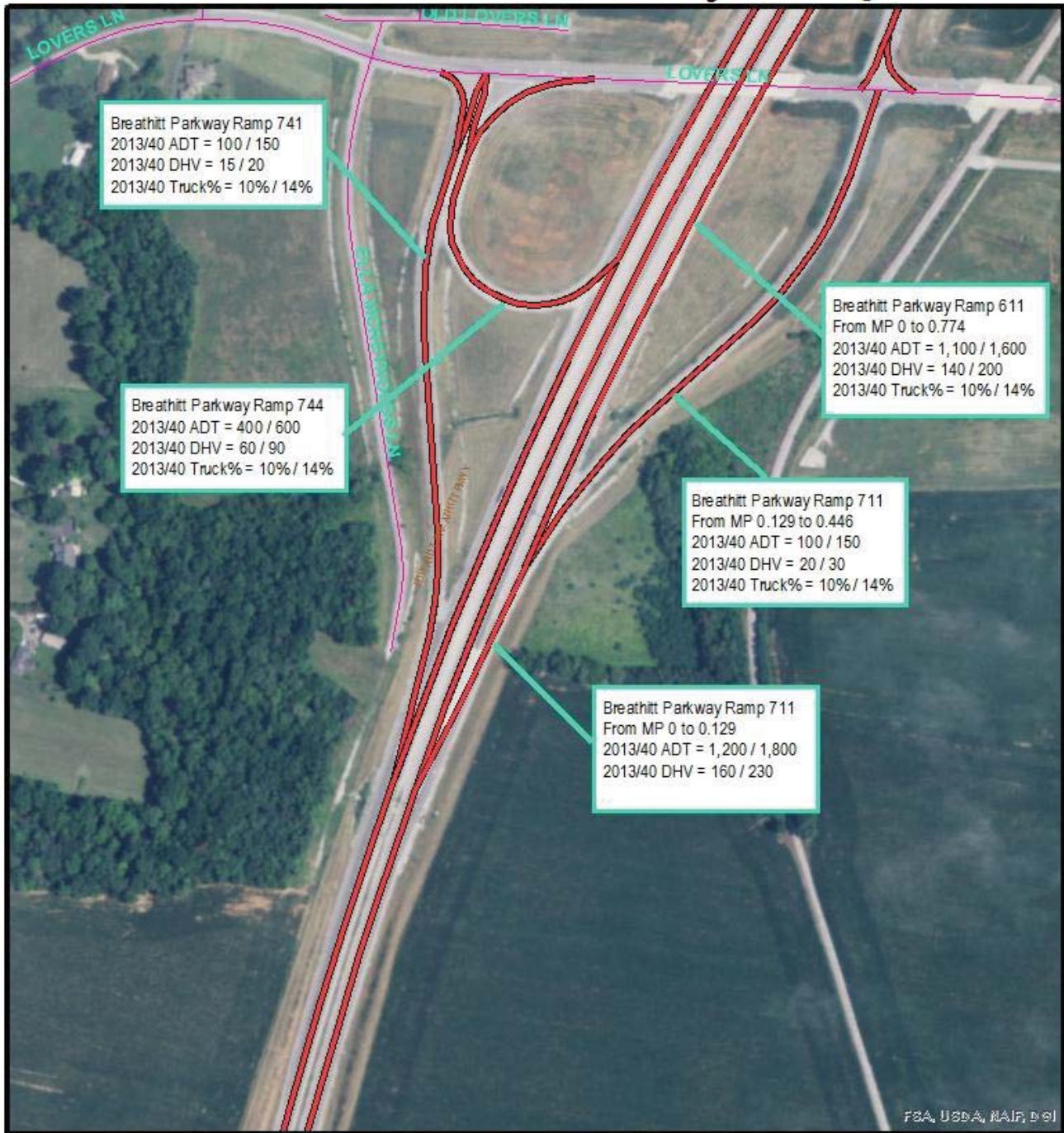
# No Build Summary Map 2



	<p><b>LEGEND</b></p> <p>Breathitt Parkway</p> <p></p>	<p>Christian County Breathitt Parkway Deficiencies Study No Build Scenario</p>			<p>0 0.15 0.3 0.6 0.9 1.2 Miles</p>
--	---	--	--	--	---



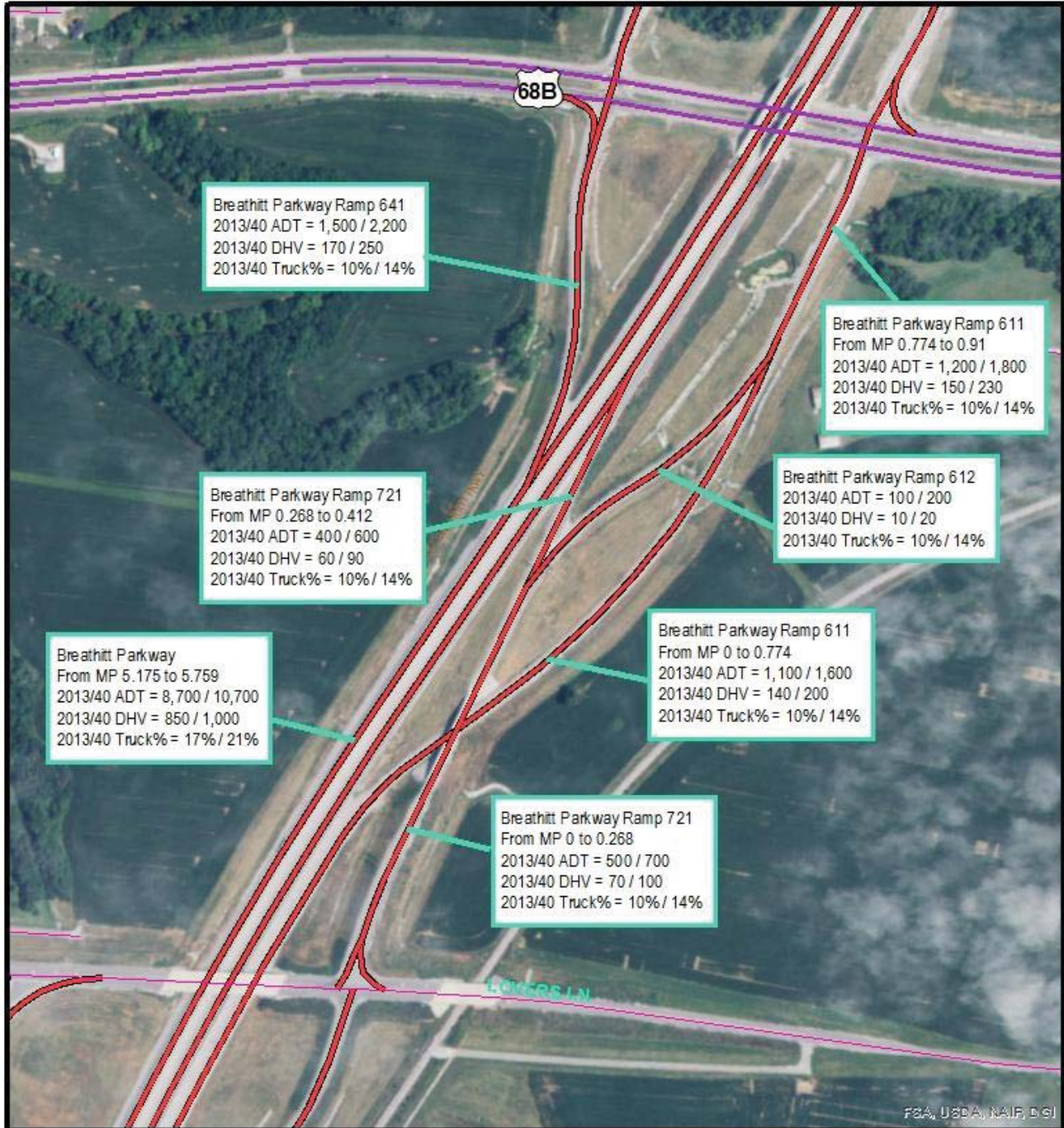
# No Build Summary Map 3



	<b>LEGEND</b> Breathitt Parkway 	Christian County Breathitt Parkway Deficiencies Study No Build Scenario		
	0      0.05      0.1 Miles			



# No Build Summary Map 4



	<b>LEGEND</b>	Christian County Breathitt Parkway Deficiencies Study No Build Scenario		
	Breathitt Parkway 			



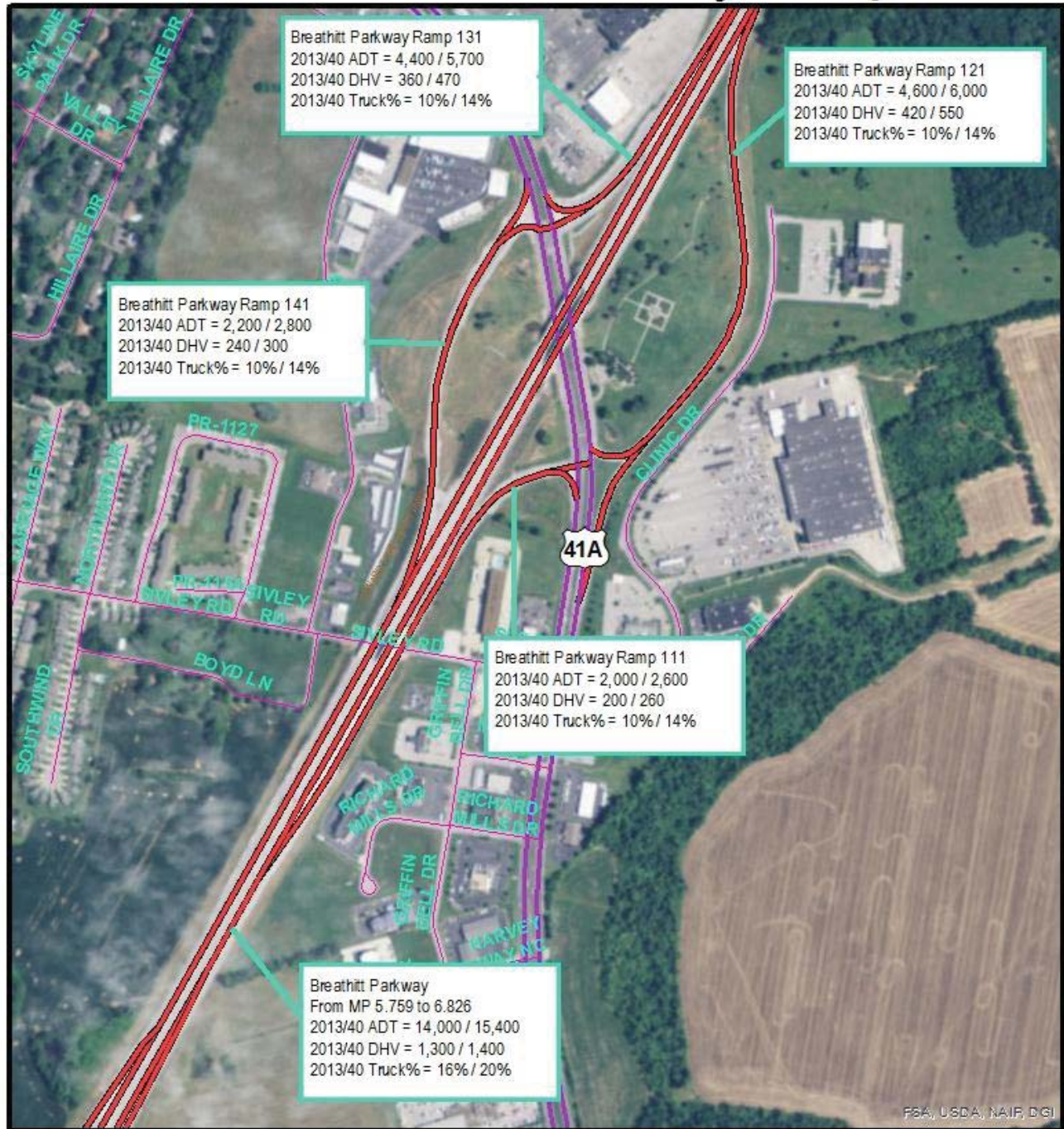
# No Build Summary Map 5



	<b>LEGEND</b>	Christian County Breathitt Parkway Deficiencies Study No Build Scenario		
	Breathitt Parkway			



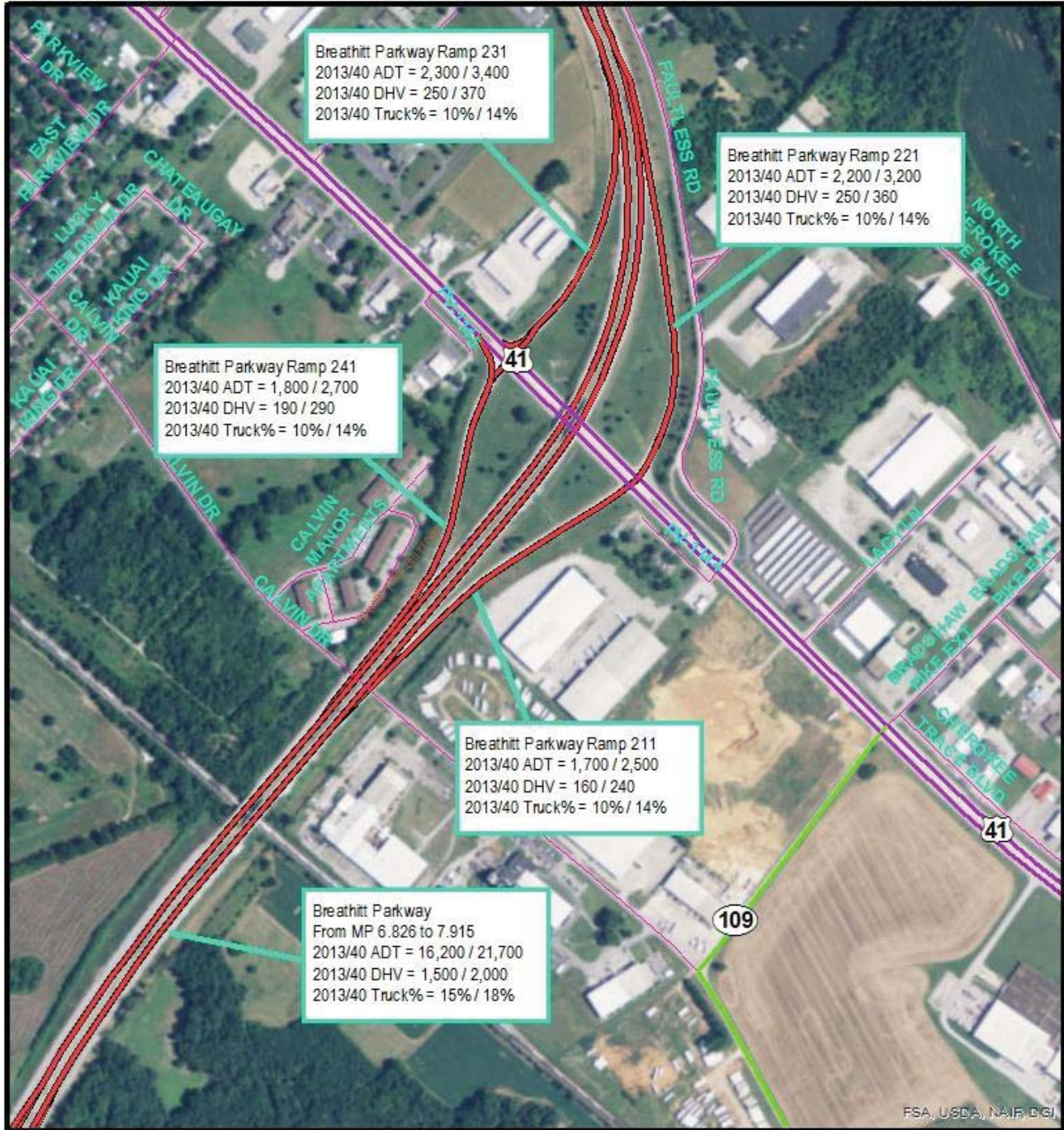
# No Build Summary Map 6



 N	<b>LEGEND</b> Breathitt Parkway 	Christian County Breathitt Parkway Deficiencies Study No Build Scenario	 <b>Kentucky</b> UNBROKEN SPIRIT
			0 0.05 0.1 0.2 Miles



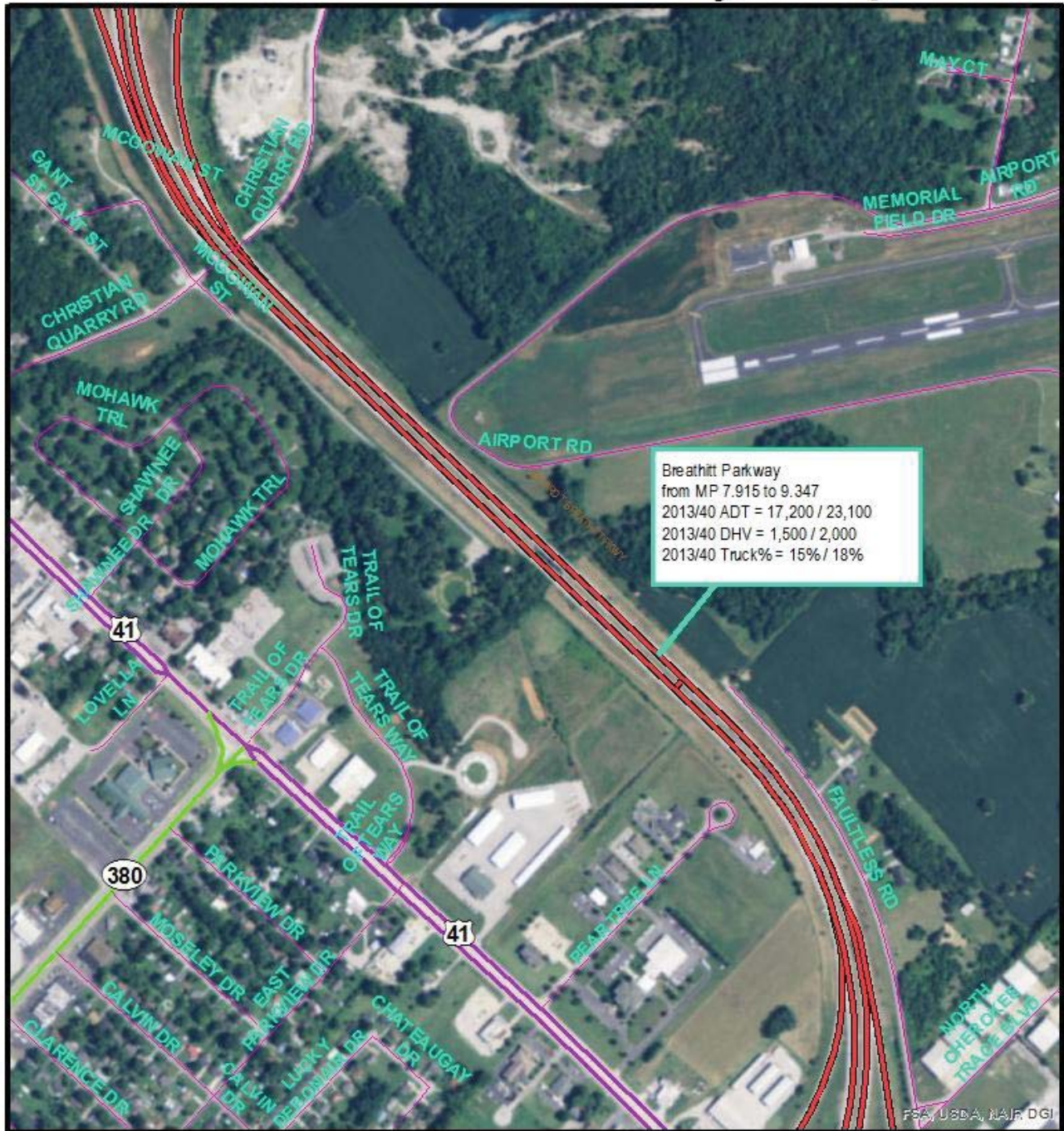
# No Build Summary Map 7



	<b>LEGEND</b>	Christian County Breathitt Parkway Deficiencies Study No Build Scenario		
	Breathitt Parkway 			



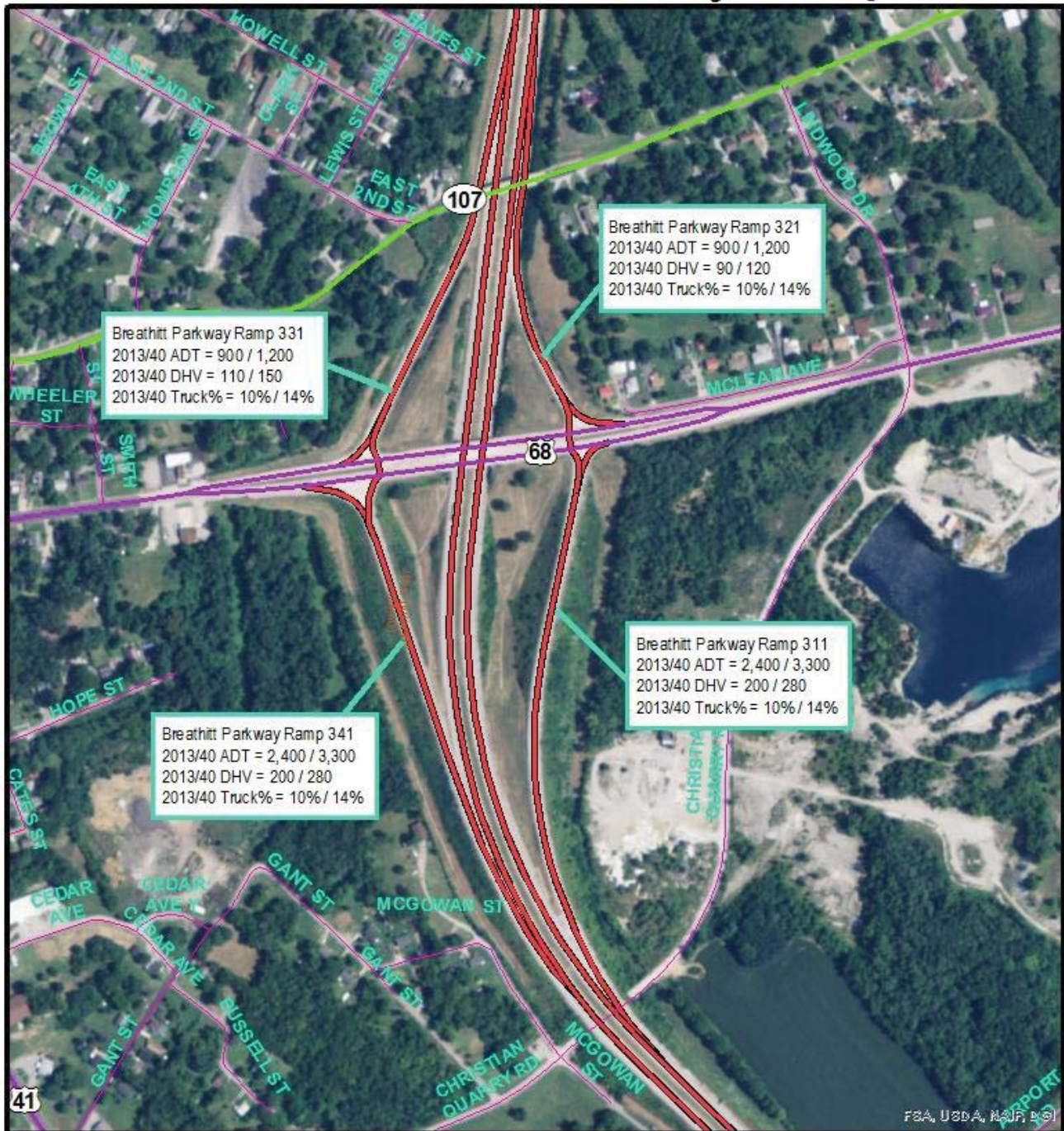
# No Build Summary Map 8



	<p><b>LEGEND</b></p> <p>Breathitt Parkway</p>	<p>Christian County                  Breathitt Parkway                  Deficiencies Study                  No Build Scenario</p>	<p><b>Kentucky</b>                  UNBROKEN SPIRIT™</p> <p>0 0.05 0.1 0.2 Miles</p>
--	---	---	--



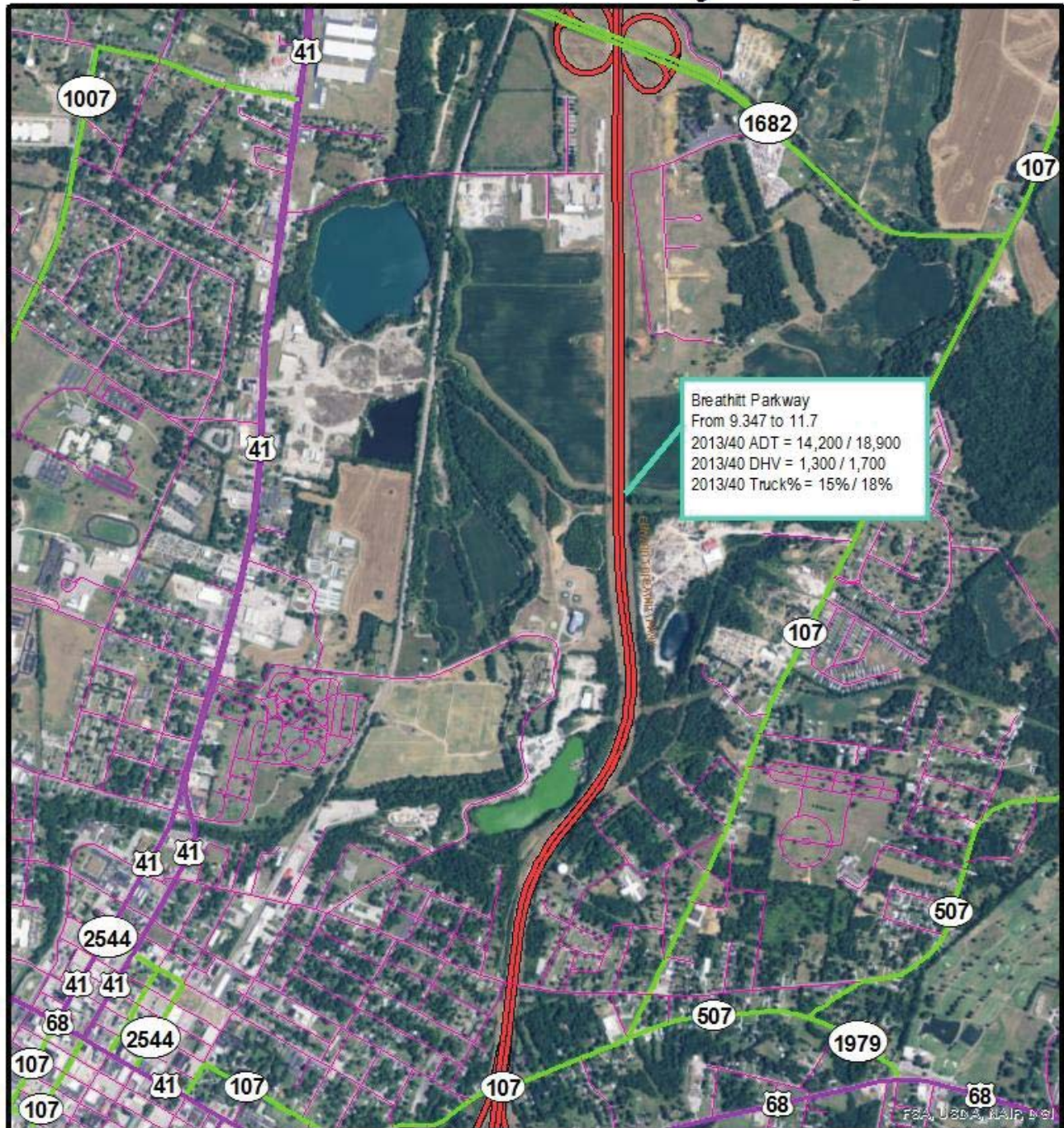
# No Build Summary Map 9



	<p><b>LEGEND</b></p> <p>Breathitt Parkway</p>	<p>Christian County                  Breathitt Parkway                  Deficiencies Study                  No Build Scenario</p>		
--	---	---	--	--



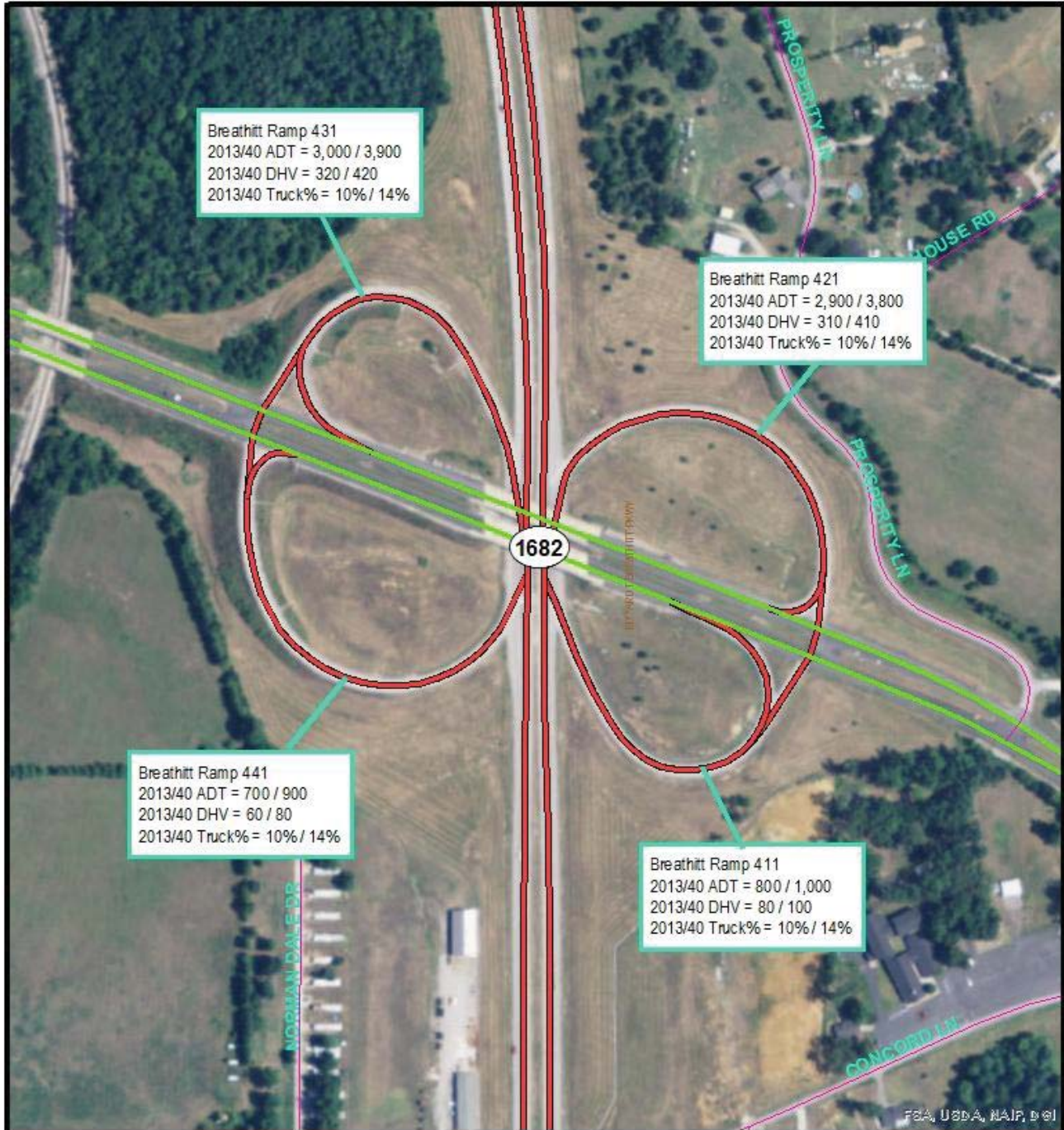
# No Build Summary Map 10



 N	<b>LEGEND</b> Breathitt Parkway 	Christian County Breathitt Parkway Deficiencies Study No Build Scenario	 KENTUCKY TRANSPORTATION CABINET	 Kentucky UNBRIDLED SPIRIT
			0 0.05 0.1 0.2 0.3 0.4 0.5 0.6 Miles	



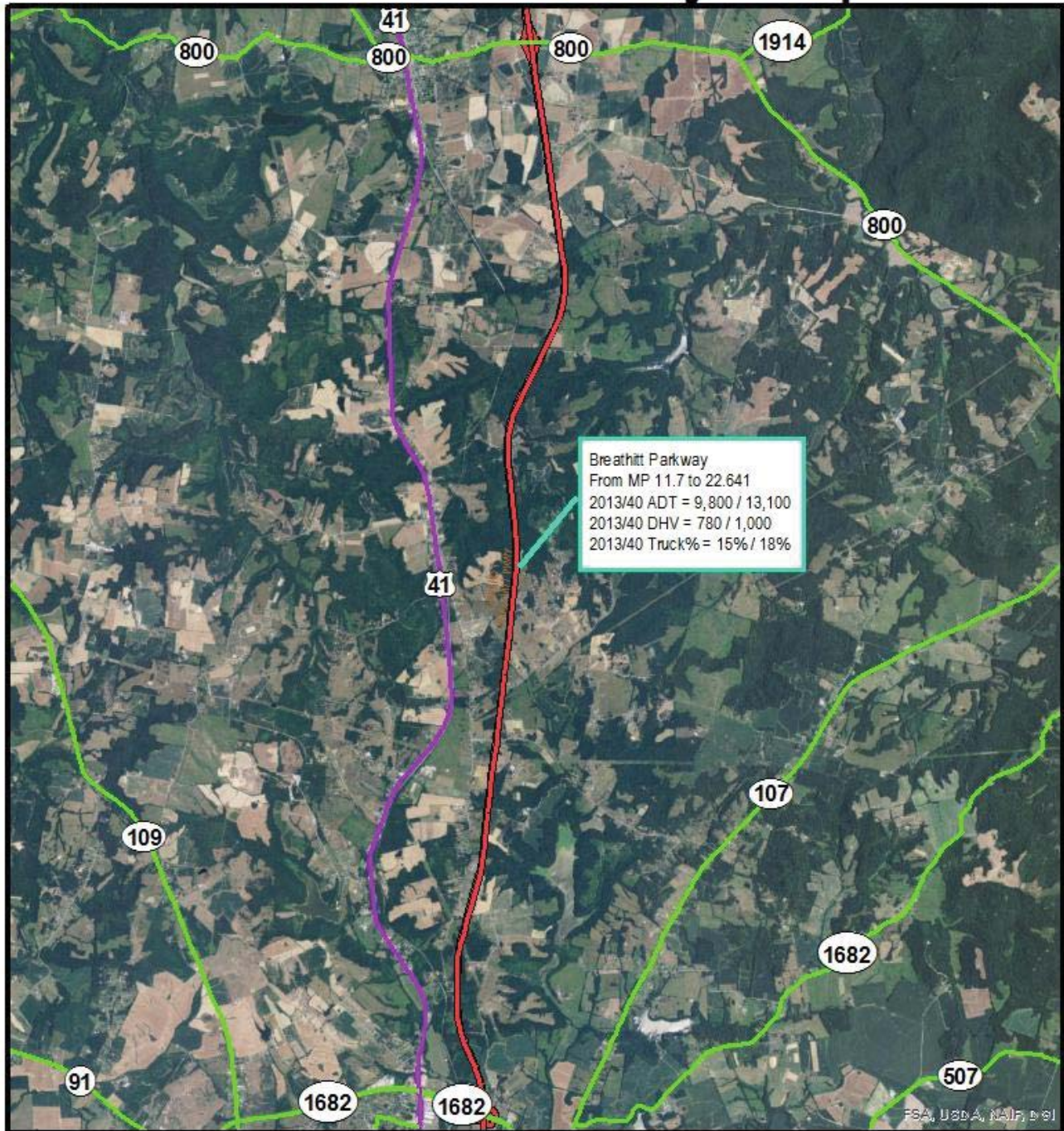
# No Build Summary Map 11



	<b>LEGEND</b>	Christian County Breathitt Parkway Deficiencies Study No Build Scenario		
	Breathitt Parkway 			



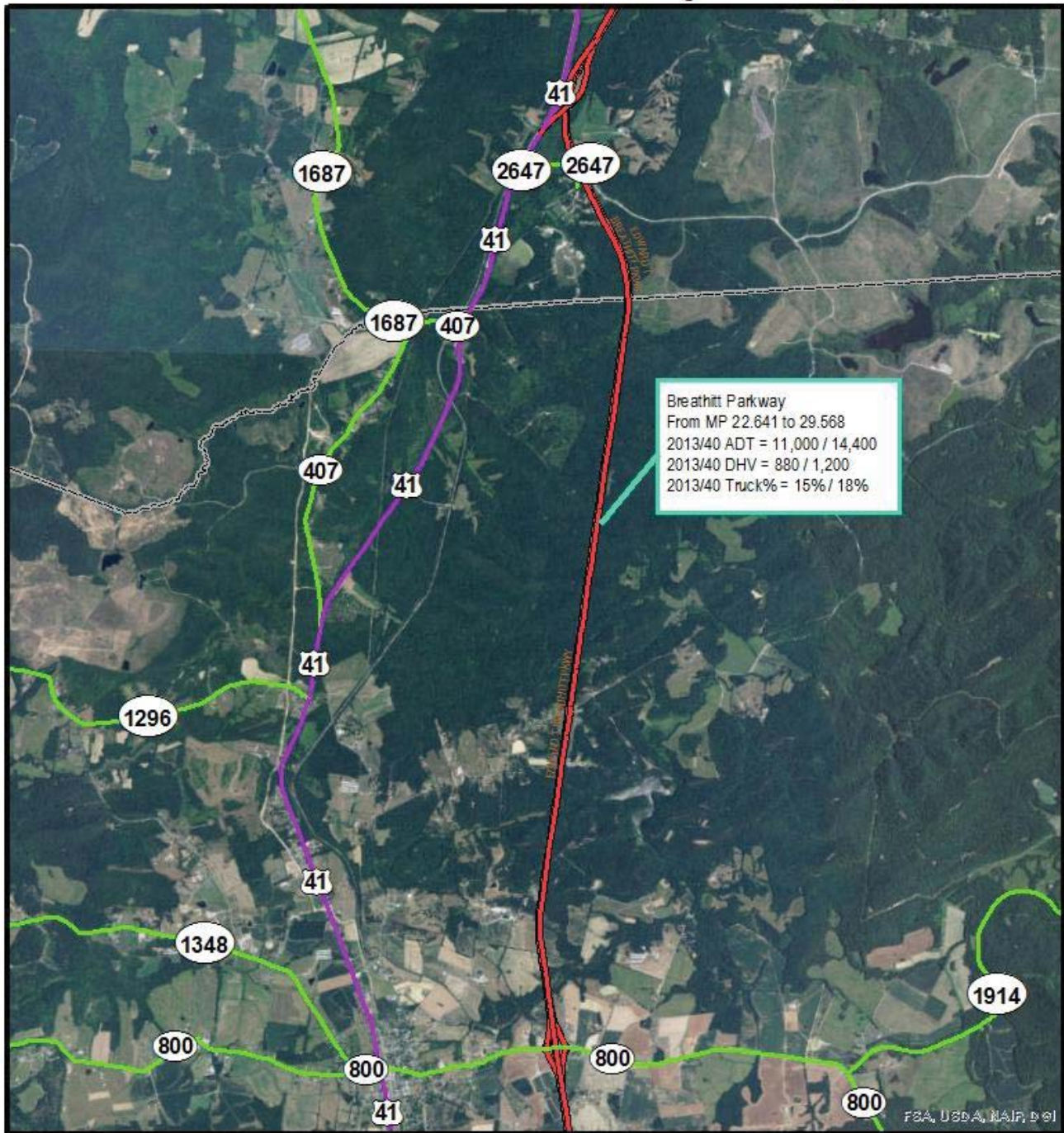
# No Build Summary Map 12



	<p><b>LEGEND</b></p> <p>Breathitt Parkway</p>	<p>Christian County Breathitt Parkway Deficiencies Study No Build Scenario</p>	<p><b>Kentucky</b> UNBROKEN SPIRIT</p>	<p>Miles</p>
--	---	--	--	--------------



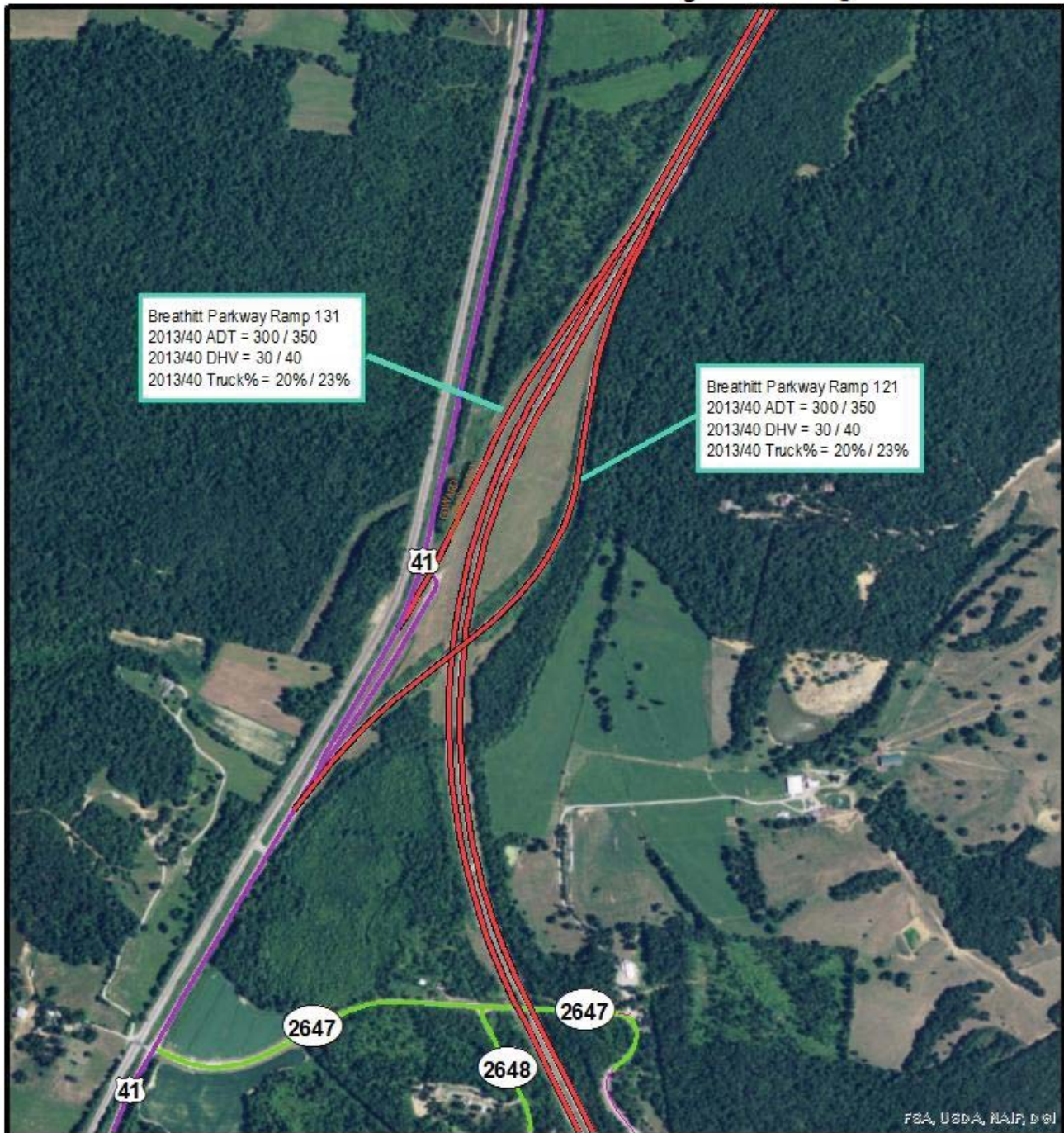
# No Build Summary Map 13



 N	<b>LEGEND</b> Breathitt Parkway 	Christian & Hopkins County Breathitt Parkway Deficiencies Study No Build Scenario	 KENTUCKY TRANSPORTATION CABINET	 Kentucky UNBRIDLED SPIRIT	0 0.3 0.6 1.2 1.8 2.4 Miles
-------	--	--	-------------------------------------	----------------------------------	--------------------------------



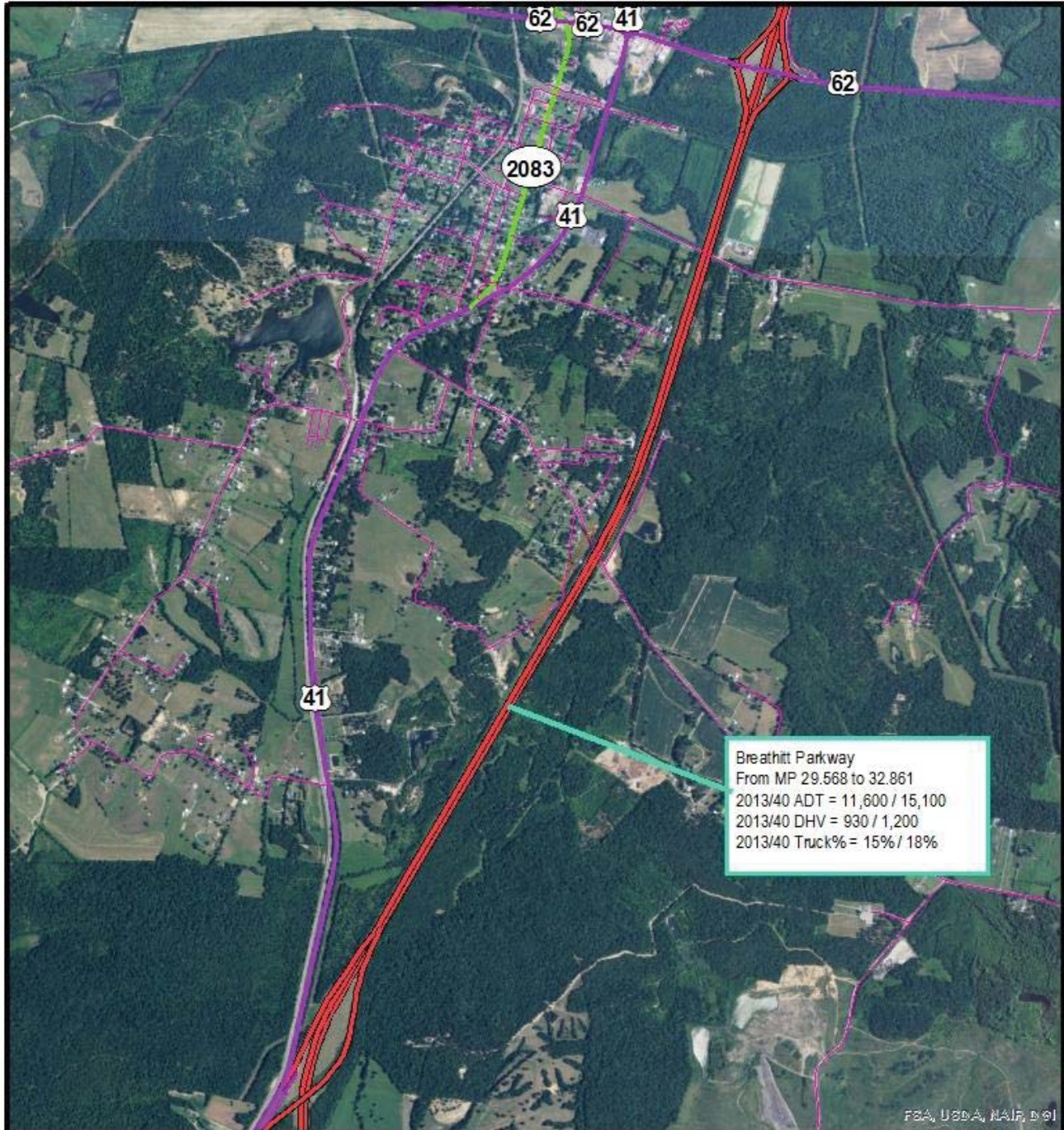
# No Build Summary Map 14



	<b>LEGEND</b>	Hopkins County Breathitt Parkway Deficiencies Study No Build Scenario		
	Breathitt Parkway 			



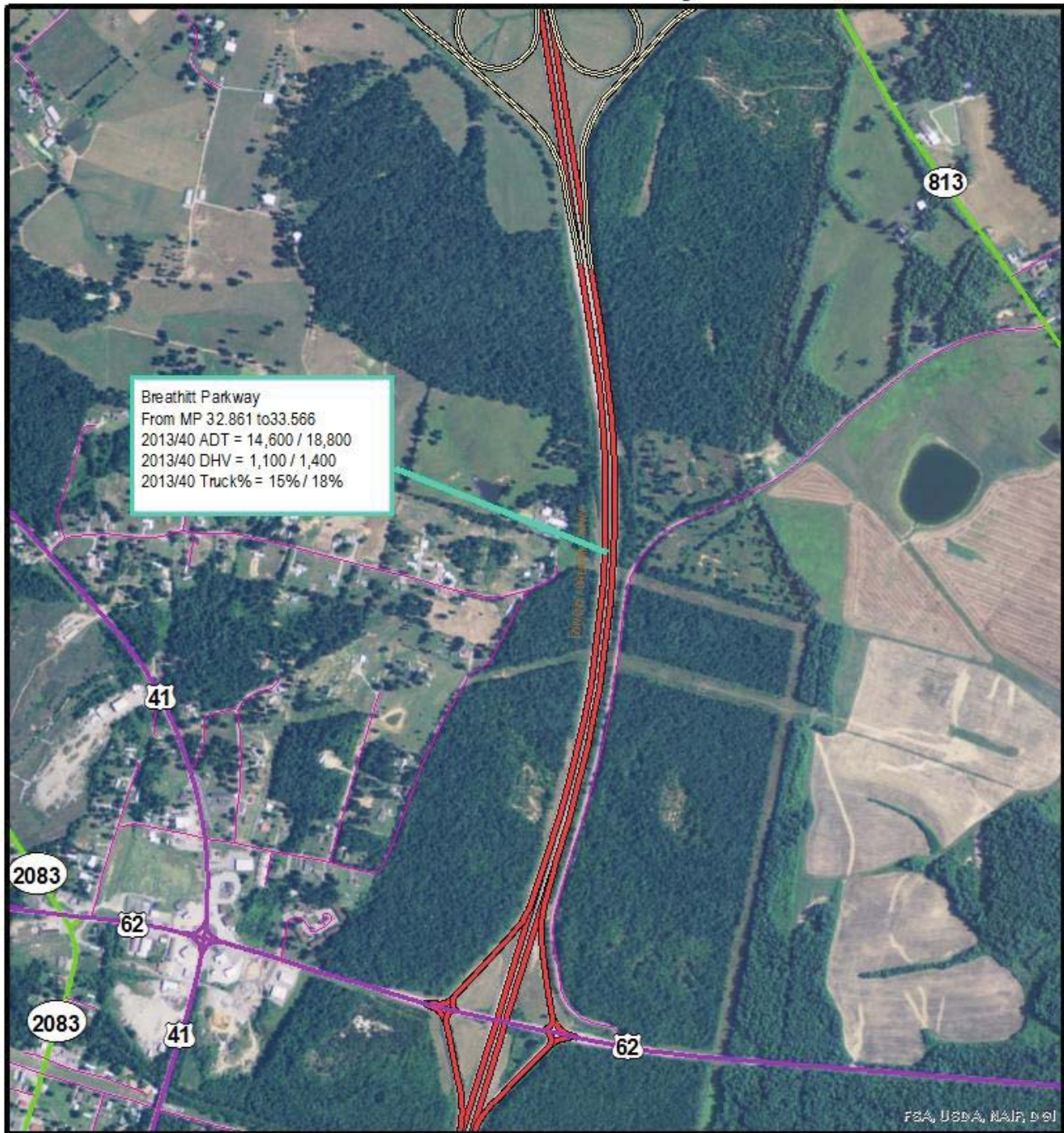
# No Build Summary Map 15



	<b>LEGEND</b>	Hopkins County Breathitt Parkway Deficiencies Study No Build Scenario			0 0.125 0.25 0.5 0.75 1 Miles
	Breathitt Parkway				



# No Build Summary Map 16

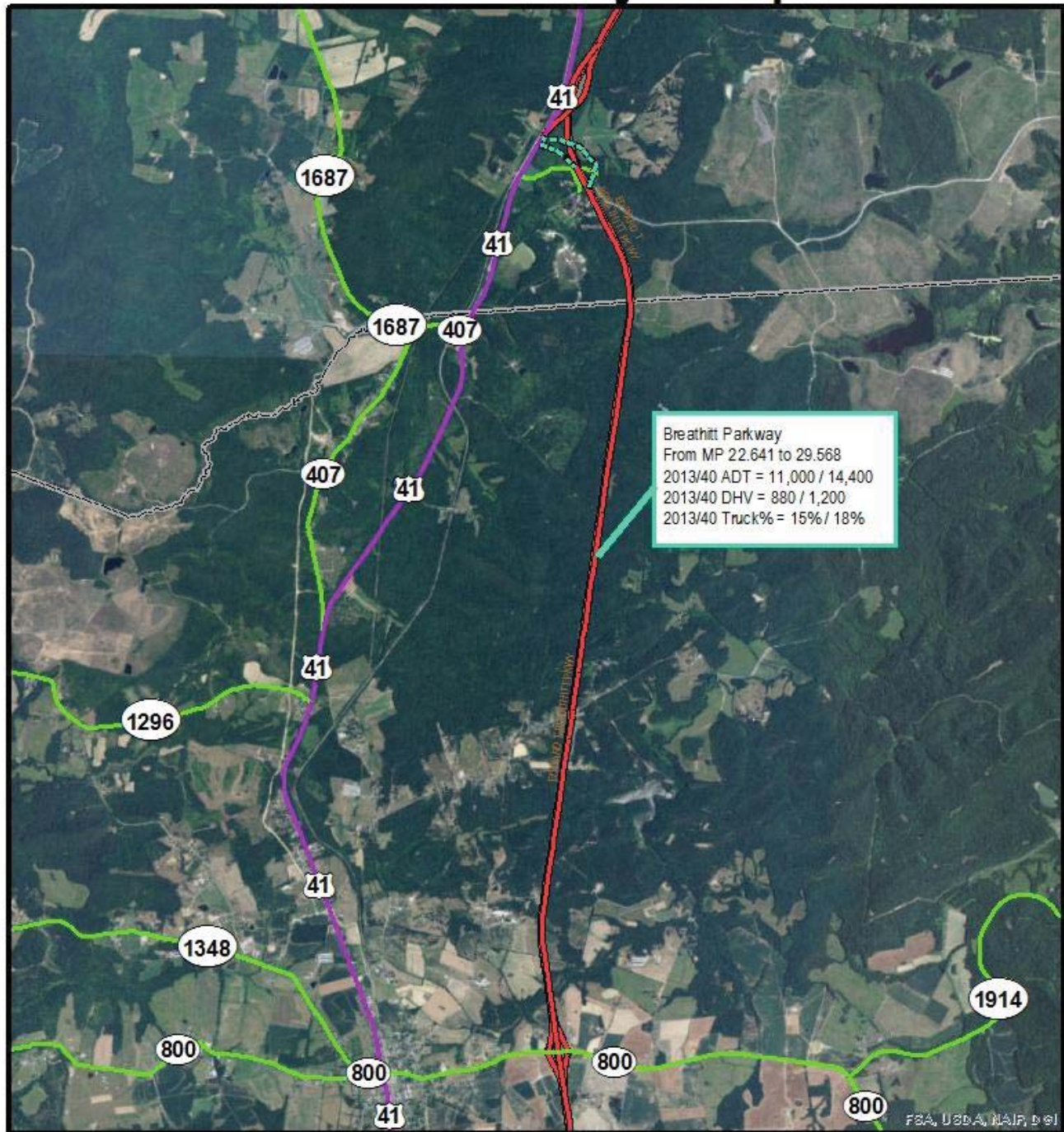


	<b>LEGEND</b> Breathitt Parkway 	Hopkins County Breathitt Parkway Deficiencies Study No Build Scenario			0 0.05 0.1 0.2 0.3 0.4 Miles
	N				

# Build Summary Maps



# Build Summary Map 1

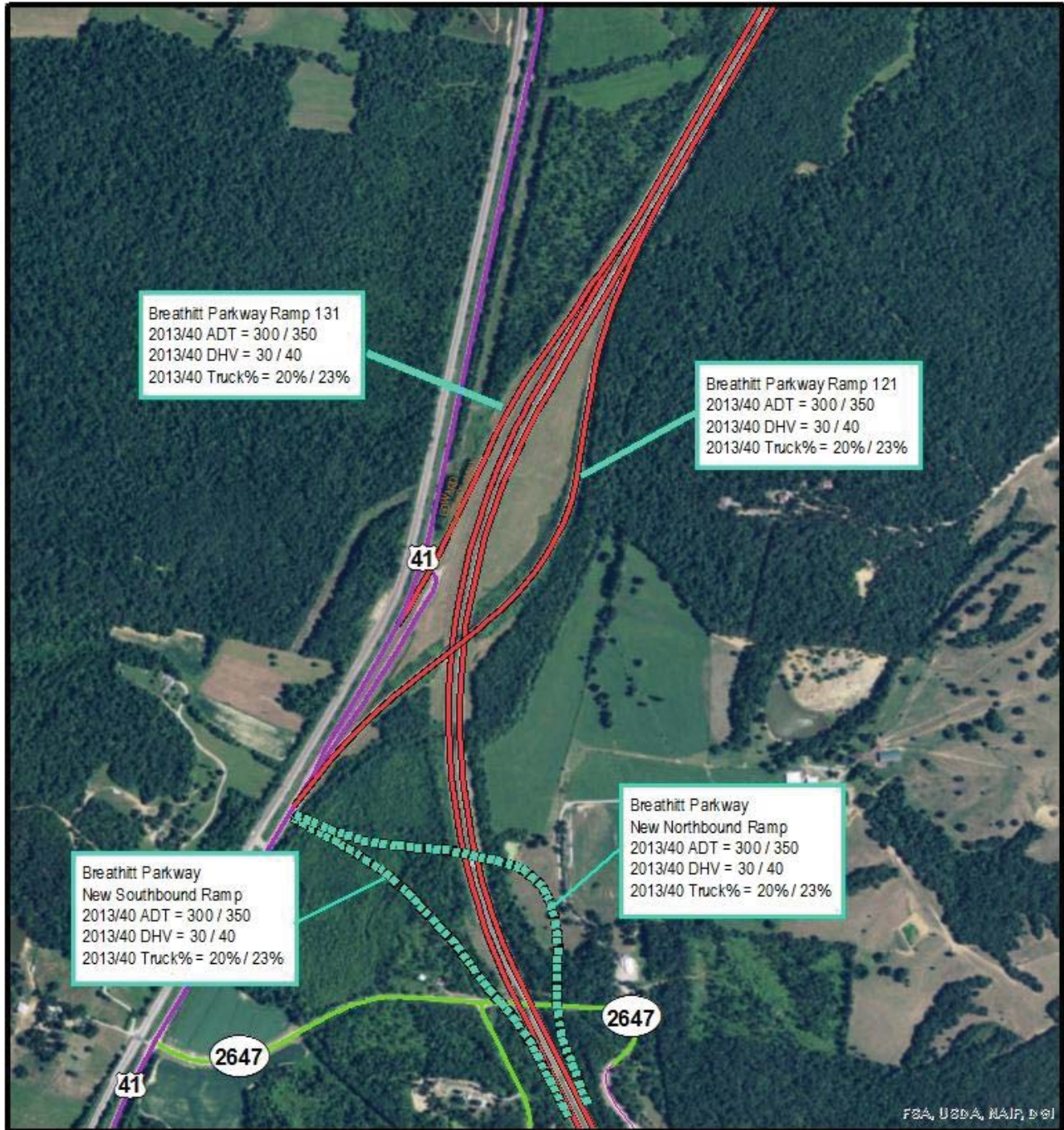


 N	<b>LEGEND</b> Breathitt Parkway 	Christian & Hopkins County Breathitt Parkway Deficiencies Study Build Scenario	 KENTUCKY TRANSPORTATION CABINET	 Kentucky UNBRIDLED SPIRIT	0 0.3 0.6 1.2 1.8 2.4 Miles
-------	--	---	-------------------------------------	----------------------------------	--------------------------------

Note: The Build and No-Build Scenarios do not differ from each other south of the US 41 Exit in Hopkins County



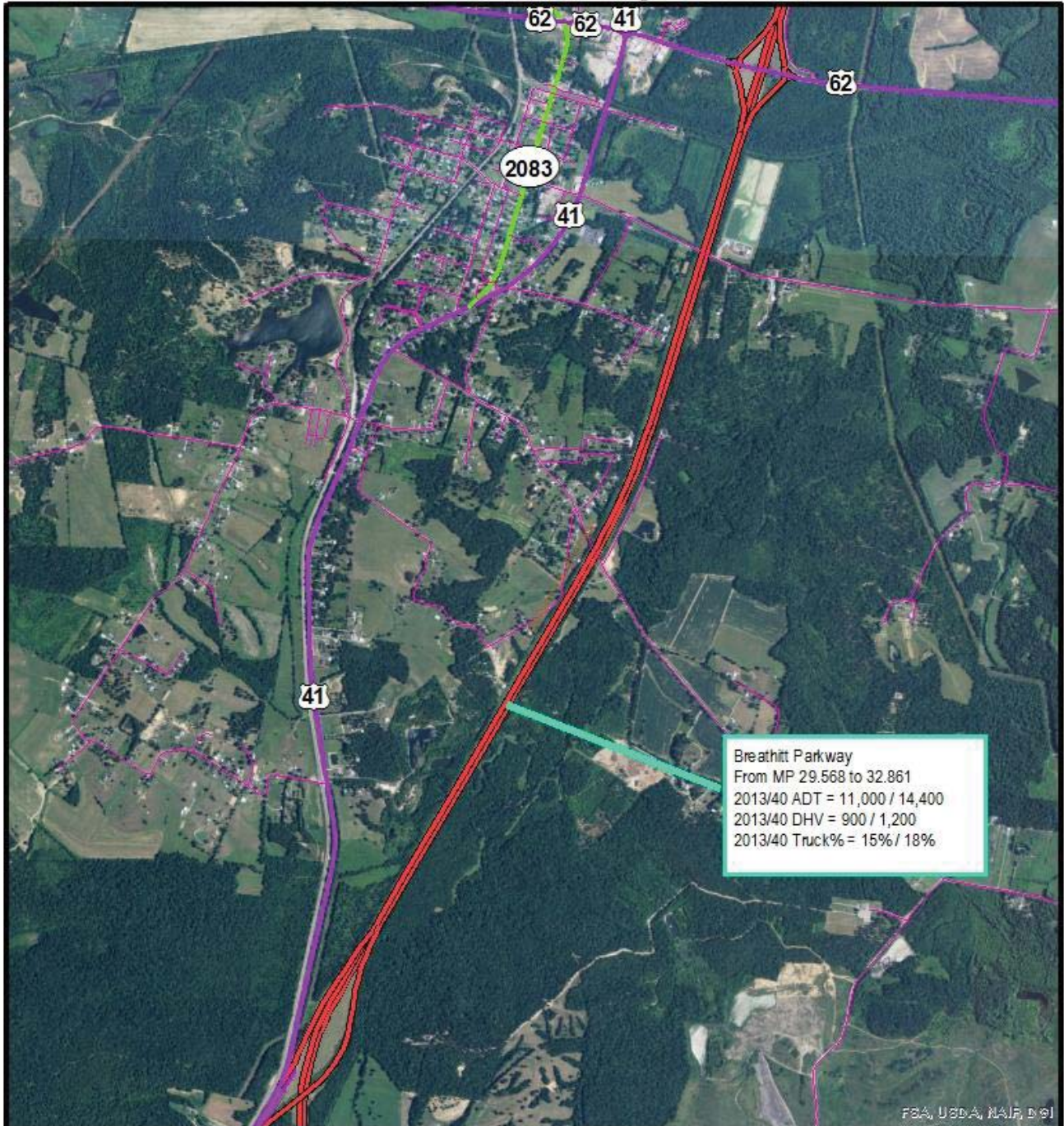
# Build Summary Map 2



<p>N</p>	<p><b>LEGEND</b></p> <p>Breathitt Parkway</p> <p>New Ramps</p>	<p>Hopkins County                  Breathitt Parkway                  Deficiencies Study                  Build Scenario</p>		<p>0 0.05 0.1 0.2 0.3 Miles</p>
----------	--	--	--	---------------------------------



# Build Summary Map 3



	<b>LEGEND</b>	Hopkins County Breathitt Parkway Deficiencies Study Build Scenario			0 0.125 0.25 0.5 0.75 1 Miles
	Breathitt Parkway 				



# Build Summary Map 4

