

Kentucky Transportation Cabinet

Daily Volume from 02/06/2012 through 02/08/2012

Site Names: 051-155
 County: Henderson
 Funct. Class: R Principal Arterial - Other
 Location: 051-AU-9005 @ 4.000

Seasonal Factor Type: 2
 Daily Factor Type: 2
 Axle Factor Type: 051156
 Growth Factor Type: 02

	Sun 02/05/2012			Mon 02/06/2012			Tue 02/07/2012			Wed 02/08/2012			Thu 02/09/2012			Fri 02/10/2012			Sat 02/11/2012		
	ROAD	NEG	POS	ROAD	NEG	POS	ROAD	NEG	POS	ROAD	NEG	POS	ROAD	NEG	POS	ROAD	NEG	POS	ROAD	NEG	POS
00:00							35	19	16	67	26	41									
01:00							47	23	24	47	27	20									
02:00							39	17	22	43	24	19									
03:00							66	33	33	72	34	38									
04:00							110	54	56	123	59	64									
05:00							265	155	110	241	139	102									
06:00							509	318	191	466	295	171									
07:00							651	360	291	636	378	258									
08:00							561	299	262	537	294	243									
09:00							430	235	195	510	292	218									
10:00				446	237	209	451	249	202												
11:00				431	240	191	444	243	201												
12:00				454	228	226	471	255	216												
13:00				478	237	241	453	235	218												
14:00				475	242	233	513	244	269												
15:00				574	245	329	584	254	330												
16:00				670	295	375	756	323	433												
17:00				603	266	337	594	270	324												
18:00				361	159	202	337	169	168												
19:00				257	115	142	280	136	144												
20:00				199	83	116	200	99	101												
21:00				186	82	104	188	83	105												
22:00				103	49	54	114	60	54												
23:00				72	33	39	84	44	40												
Volume				5,309	2,511	2,798	8,182	4,177	4,005	2,742	1,568	1,174									
AM Peak Vol							651	360	291												
AM Peak Fct							1.00	1.00	1.00												
AM Peak Hr							7:00	7:00	7:00												
PM Peak Vol				670	295	375	756	323	433												
PM Peak Fct				1.00	1.00	1.00	1.00	1.00	1.00												
PM Peak Hr				16:00	16:00	16:00	16:00	16:00	16:00												
Seasonal Fct				1.057	1.057	1.057	1.057	1.057	1.057	1.057	1.057	1.057									
Daily Fct				1.000	1.000	1.000	1.000	1.000	1.000	1.000	1.000	1.000									
Axle Fct				0.500	0.500	0.500	0.500	0.500	0.500	0.500	0.500	0.500									
Pulse Fct				2.000	2.000	2.000	2.000	2.000	2.000	2.000	2.000	2.000									

Kentucky Transportation Cabinet

24 Hour Roadway Summary for Feb 6, 2012

051-155

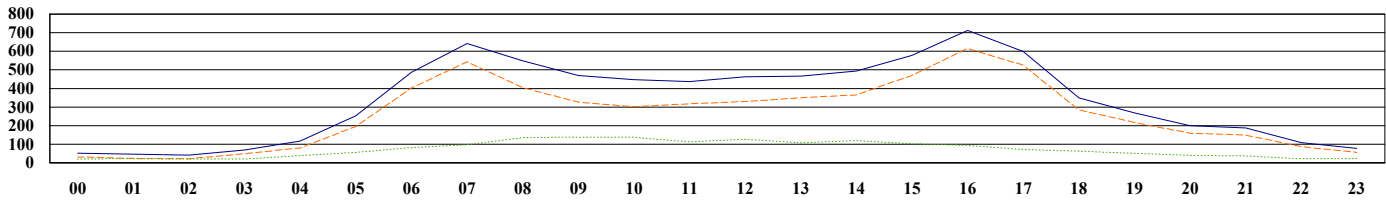
FC2

Henderson County

051-AU-9005 @ 4.000

	Total	Total	Peak	Peak
Private:	6,290.0	77.6	614.0	86.2
Single:	410.0	5.1	31.5	4.4
Combo:	1,304.5	16.1	61.5	8.6
Trucks:	1,714.5	21.1	93.0	13.1
Total:	8,110.0		712.5	

Peak Hour:	16
Axle Factor:	0.82



	VOL	MC	CAR	PU	BUS	2D	SU 3	SU 4+	ST 4-	ST 5	ST 6+	MT 5-	MT 6	MT 7+
0	51.0	0	23.5	7.5	1.5	1.5	0	0	3.0	13.5	0.5	0	0	0
1	47.0	0	18.5	4.5	2.0	3.0	0	0	5.0	14.0	0	0	0	0
2	40.5	0	16.5	5.0	0	3.0	0	0	3.5	12.0	0	0.5	0	0
3	69.0	0.5	37.0	10.0	2.5	4.5	0	0	5.0	9.0	0	0.5	0	0
4	116.5	0	51.5	27.0	1.0	4.0	0	0.5	8.5	20.0	1.0	3.0	0	0
5	253.0	0	127.5	67.5	3.5	10.5	2.5	0	14.0	26.5	0.5	0	0.5	0
6	487.0	1.0	278.5	121.5	5.5	20.5	1.5	0	17.5	38.5	1.5	0	0	1.0
7	642.5	0	415.0	126.5	4.5	20.5	3.5	1.5	23.5	45.0	2.0	0.5	0	0
8	548.0	4.5	276.5	124.0	9.0	34.5	2.0	1.5	23.5	69.0	3.0	0	0	0.5
9	470.0	1.0	232.5	91.5	7.5	35.0	4.0	1.5	25.0	69.0	2.0	1.0	0	0
10	447.0	2.0	216.0	83.5	9.5	24.0	2.0	0.5	30.5	75.5	2.5	0	0.5	0.5
11	437.5	3.5	226.5	87.0	9.5	14.0	3.5	0	26.5	63.5	2.5	0	0	1.0
12	462.5	2.0	227.0	99.0	9.0	32.0	4.0	2.5	26.0	58.5	1.5	0.5	0	0.5
13	465.5	2.5	264.0	83.5	8.0	21.0	2.0	0.5	16.0	66.5	1.0	0	0	0.5
14	494.0	2.0	268.5	95.0	10.0	25.0	1.0	1.0	27.0	58.5	5.5	0.5	0	0
15	578.0	1.5	345.0	124.0	5.5	27.5	1.5	1.5	18.0	49.0	3.5	0	0	1.0
16	712.5	1.5	473.0	139.5	5.5	28.0	3.0	0.5	21.5	37.0	2.0	0	0	1.0
17	598.0	3.0	408.5	113.5	2.5	19.0	2.0	2.0	12.5	32.0	2.5	0.5	0	0
18	349.0	0.5	227.5	56.5	2.5	14.0	1.5	0.5	13.5	32.0	0	0.5	0	0
19	268.5	0	176.5	40.5	2.0	4.5	0.5	0.5	8.0	34.5	0.5	0.5	0	0.5
20	199.5	0	128.5	30.5	1.0	5.5	1.0	0	5.0	27.5	0	0.5	0	0
21	187.0	0.5	120.0	28.0	2.0	4.5	0	0	5.0	25.0	0	2.0	0	0
22	108.5	0	70.5	15.5	1.0	0.5	0	0.5	3.5	16.0	1.0	0	0	0
23	78.0	0	48.5	6.0	0.5	2.0	1.0	0	3.0	17.0	0	0	0	0
Total	8,110.0	26.0	4,677.0	1,587.0	105.5	358.5	36.5	15.0	344.5	909.0	33.0	10.5	1.0	6.5
%	100.0	0.3	57.7	19.6	1.3	4.4	0.5	0.2	4.2	11.2	0.4	0.1	0	0.1

Kentucky Transportation Cabinet

24 Hour Directional Summary, Pos Bound for Feb 6, 2012

051-155

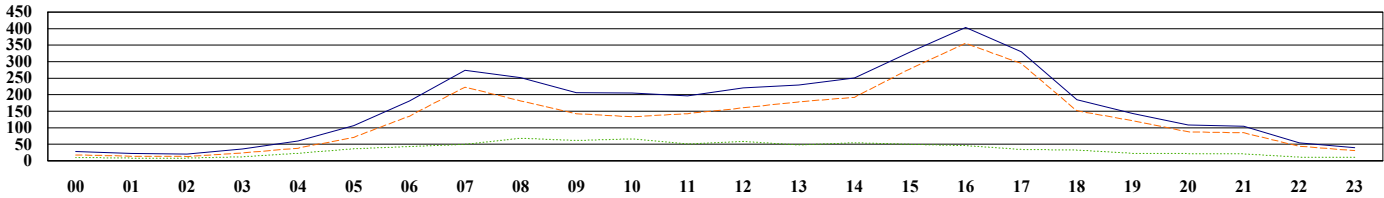
FC2

Henderson County

051-AU-9005 @ 4.000

	Total	Total	Peak	Peak
Private:	3,105.0	77.9	355.5	88.0
Single:	197.5	5.0	18.0	4.5
Combo:	637.0	16.0	27.5	6.8
Trucks:	834.5	20.9	45.5	11.3
Total:	3,986.0		404.0	

Peak Hour: 16
Axle Factor: 0.82



	VOL	MC	CAR	PU	BUS	2D	SU 3	SU 4+	ST 4-	ST 5	ST 6+	MT 5-	MT 6	MT 7+
0	28.5	0	14.0	3.5	1.5	0	0	0	1.5	7.5	0.5	0	0	0
1	22.0	0	10.0	4.0	0.5	0.5	0	0	1.5	5.5	0	0	0	0
2	20.5	0	9.0	3.5	0	0	0	0	2.0	5.5	0	0.5	0	0
3	35.5	0.5	16.0	7.0	0.5	2.0	0	0	3.0	6.0	0	0.5	0	0
4	60.0	0	22.0	15.5	0	1.5	0	0.5	4.5	13.5	0.5	2.0	0	0
5	106.0	0	42.0	28.5	0	6.0	0.5	0	7.5	21.0	0	0	0.5	0
6	180.5	0.5	97.5	37.0	2.5	7.5	0.5	0	9.5	25.5	0	0	0	0
7	274.0	0	177.0	46.0	1.5	7.0	1.5	1.0	12.5	26.5	0.5	0.5	0	0
8	252.0	2.5	125.5	53.0	3.5	15.0	1.5	1.0	11.0	37.5	1.0	0	0	0.5
9	206.5	0.5	108.5	33.5	3.0	12.5	2.0	0.5	12.0	32.0	1.0	1.0	0	0
10	205.0	1.5	86.5	44.5	7.0	16.5	1.0	0.5	9.5	36.0	1.0	0	0.5	0.5
11	196.0	1.0	101.0	40.5	3.5	7.0	1.5	0	10.0	29.0	1.5	0	0	1.0
12	221.0	0.5	108.5	50.5	3.0	15.0	1.0	0	11.0	31.5	0	0	0	0
13	229.5	0.5	131.5	46.0	4.0	9.0	1.5	0.5	6.5	29.5	0.5	0	0	0
14	251.0	0.5	141.0	50.0	5.0	13.0	0.5	0	12.5	27.0	1.5	0	0	0
15	329.5	0.5	195.0	82.0	3.0	16.5	0.5	1.5	9.0	18.5	2.0	0	0	1.0
16	404.0	0	267.5	88.0	3.0	15.5	2.0	0.5	9.0	17.5	1.0	0	0	0
17	330.0	1.0	231.0	62.5	2.0	9.0	0.5	1.0	7.5	14.0	1.5	0	0	0
18	185.0	0.5	121.0	29.5	2.0	9.5	1.0	0	5.5	16.0	0	0	0	0
19	143.0	0	98.0	22.5	0.5	3.0	0.5	0.5	2.0	16.0	0	0	0	0
20	108.5	0	69.5	18.0	0	3.5	0	0	2.0	15.5	0	0	0	0
21	104.5	0.5	69.0	14.5	0.5	2.5	0	0	2.0	14.5	0	1.0	0	0
22	54.0	0	34.0	9.5	0	0.5	0	0.5	1.5	7.5	0.5	0	0	0
23	39.5	0	26.0	4.0	0	0.5	0.5	0	2.0	6.5	0	0	0	0
Total	3,986.0	10.5	2,301.0	793.5	46.5	173.0	16.5	8.0	155.0	459.5	13.0	5.5	1.0	3.0
%	100.0	0.3	57.7	19.9	1.2	4.3	0.4	0.2	3.9	11.5	0.3	0.1	0	0.1

Kentucky Transportation Cabinet

24 Hour Directional Summary, Neg Bound for Feb 6, 2012

051-155

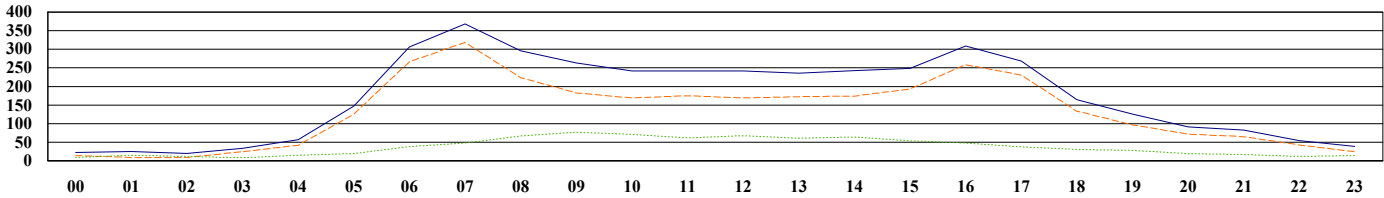
FC2

Henderson County

051-AU-9005 @ 4.000

	Total	Total	Peak	Peak
Private:	3,185.0	77.2	318.5	86.4
Single:	212.5	5.2	16.0	4.3
Combo:	667.5	16.2	31.0	8.4
Trucks:	880.0	21.3	47.0	12.8
Total:	4,124.0		368.5	

Peak Hour: 7
Axle Factor: 0.82



	VOL	MC	CAR	PU	BUS	2D	SU 3	SU 4+	ST 4-	ST 5	ST 6+	MT 5-	MT 6	MT 7+
0	22.5	0	9.5	4.0	0	1.5	0	0	1.5	6.0	0	0	0	0
1	25.0	0	8.5	0.5	1.5	2.5	0	0	3.5	8.5	0	0	0	0
2	20.0	0	7.5	1.5	0	3.0	0	0	1.5	6.5	0	0	0	0
3	33.5	0	21.0	3.0	2.0	2.5	0	0	2.0	3.0	0	0	0	0
4	56.5	0	29.5	11.5	1.0	2.5	0	0	4.0	6.5	0.5	1.0	0	0
5	147.0	0	85.5	39.0	3.5	4.5	2.0	0	6.5	5.5	0.5	0	0	0
6	306.5	0.5	181.0	84.5	3.0	13.0	1.0	0	8.0	13.0	1.5	0	0	1.0
7	368.5	0	238.0	80.5	3.0	13.5	2.0	0.5	11.0	18.5	1.5	0	0	0
8	296.0	2.0	151.0	71.0	5.5	19.5	0.5	0.5	12.5	31.5	2.0	0	0	0
9	263.5	0.5	124.0	58.0	4.5	22.5	2.0	1.0	13.0	37.0	1.0	0	0	0
10	242.0	0.5	129.5	39.0	2.5	7.5	1.0	0	21.0	39.5	1.5	0	0	0
11	241.5	2.5	125.5	46.5	6.0	7.0	2.0	0	16.5	34.5	1.0	0	0	0
12	241.5	1.5	118.5	48.5	6.0	17.0	3.0	2.5	15.0	27.0	1.5	0.5	0	0.5
13	236.0	2.0	132.5	37.5	4.0	12.0	0.5	0	9.5	37.0	0.5	0	0	0.5
14	243.0	1.5	127.5	45.0	5.0	12.0	0.5	1.0	14.5	31.5	4.0	0.5	0	0
15	248.5	1.0	150.0	42.0	2.5	11.0	1.0	0	9.0	30.5	1.5	0	0	0
16	308.5	1.5	205.5	51.5	2.5	12.5	1.0	0	12.5	19.5	1.0	0	0	1.0
17	268.0	2.0	177.5	51.0	0.5	10.0	1.5	1.0	5.0	18.0	1.0	0.5	0	0
18	164.0	0	106.5	27.0	0.5	4.5	0.5	0.5	8.0	16.0	0	0.5	0	0
19	125.5	0	78.5	18.0	1.5	1.5	0	0	6.0	18.5	0.5	0.5	0	0.5
20	91.0	0	59.0	12.5	1.0	2.0	1.0	0	3.0	12.0	0	0.5	0	0
21	82.5	0	51.0	13.5	1.5	2.0	0	0	3.0	10.5	0	1.0	0	0
22	54.5	0	36.5	6.0	1.0	0	0	0	2.0	8.5	0.5	0	0	0
23	38.5	0	22.5	2.0	0.5	1.5	0.5	0	1.0	10.5	0	0	0	0
Total	4,124.0	15.5	2,376.0	793.5	59.0	185.5	20.0	7.0	189.5	449.5	20.0	5.0	0	3.5
%	100.0	0.4	57.6	19.2	1.4	4.5	0.5	0.2	4.6	10.9	0.5	0.1	0	0.1