

Appendix B

St. Matthews Concept Landscape Plan

ST. MATTHEWS BUSINESS DISTRICT STREETSCAPE PLAN PHASE TWO IMPROVEMENTS

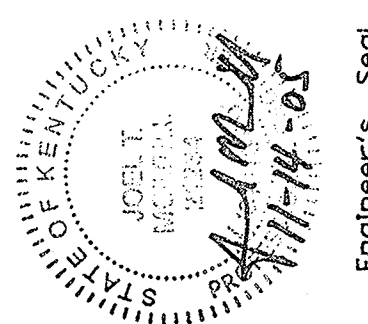
METRO DEVELOPMENT AUTHORITY
LOUISVILLE, KENTUCKY



VICINITY MAP
NOT TO SCALE

ST. MATTHEWS BUSINESS DISTRICT
STREETSCAPE PLAN - PHASE TWO
METRO DEVELOPMENT AUTHORITY
LOUISVILLE, KENTUCKY

THE CORRADINO GROUP
CORRADINO
ENGINEERS PLANNERS CONSTRUCTORS
200 SOUTH FIFTH STREET
SUITE 300
LOUISVILLE, KY 40202
WWW.CORRADINO.COM

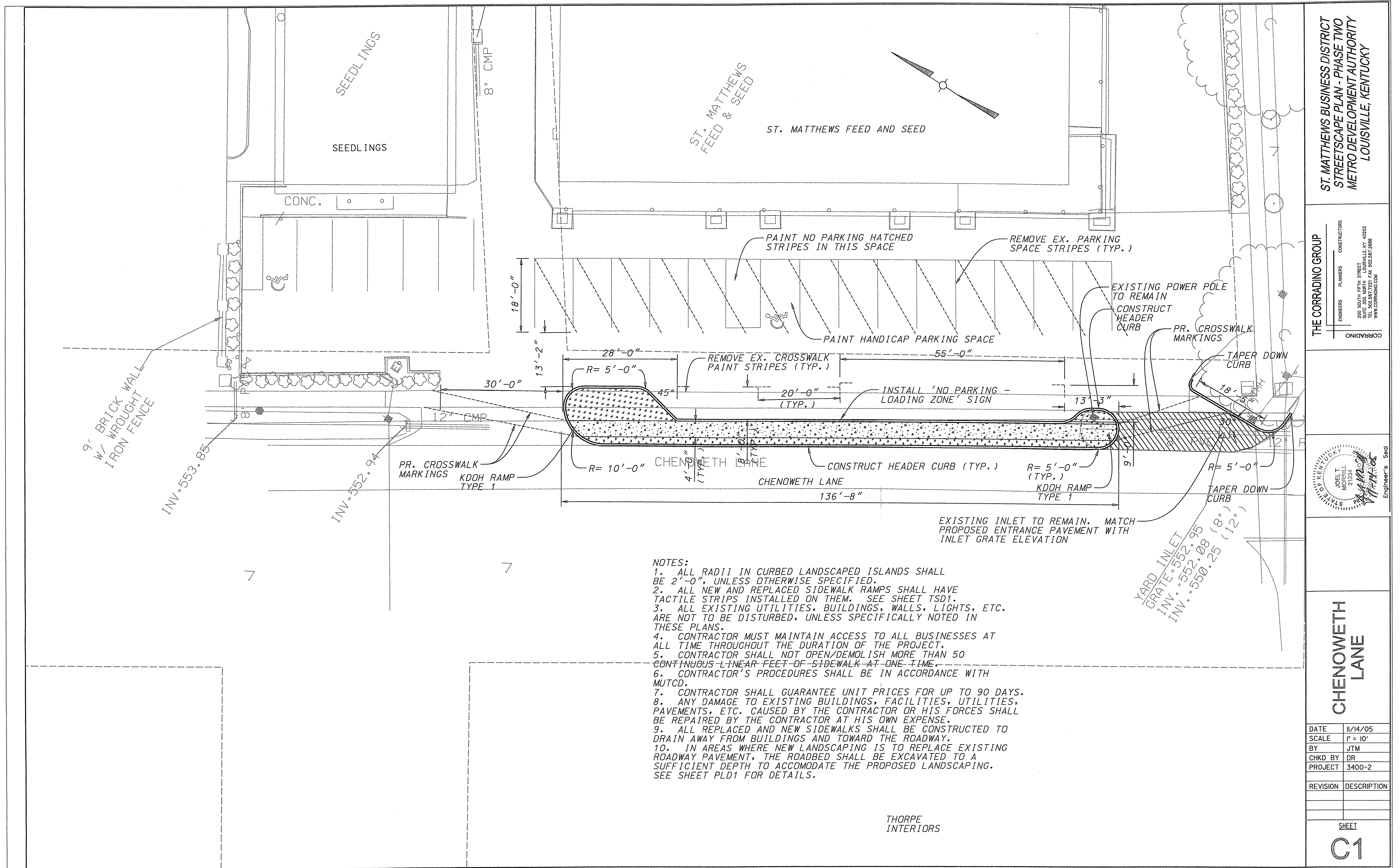


COVER
SHEET

DATE	11/14/05
SCALE	NONE
BY	JTM
CHKD BY	DR
PROJECT	3400-2

REVISION	DESCRIPTION

SHEET
CS1



ST. MATTHEWS BUSINESS DISTRICT
STREETScape PLAN - PHASE TWO
METRO DEVELOPMENT AUTHORITY
LOUISVILLE, KENTUCKY

THE CORRADINO GROUP
ENGINEERS PLANNERS CONSTRUCTORS
CORRADINO
200 SOUTH FIFTH STREET
LOUISVILLE, KY 40202
TEL: 502.587.7201 FAX: 502.587.7266
WWW.CORRADINO.COM

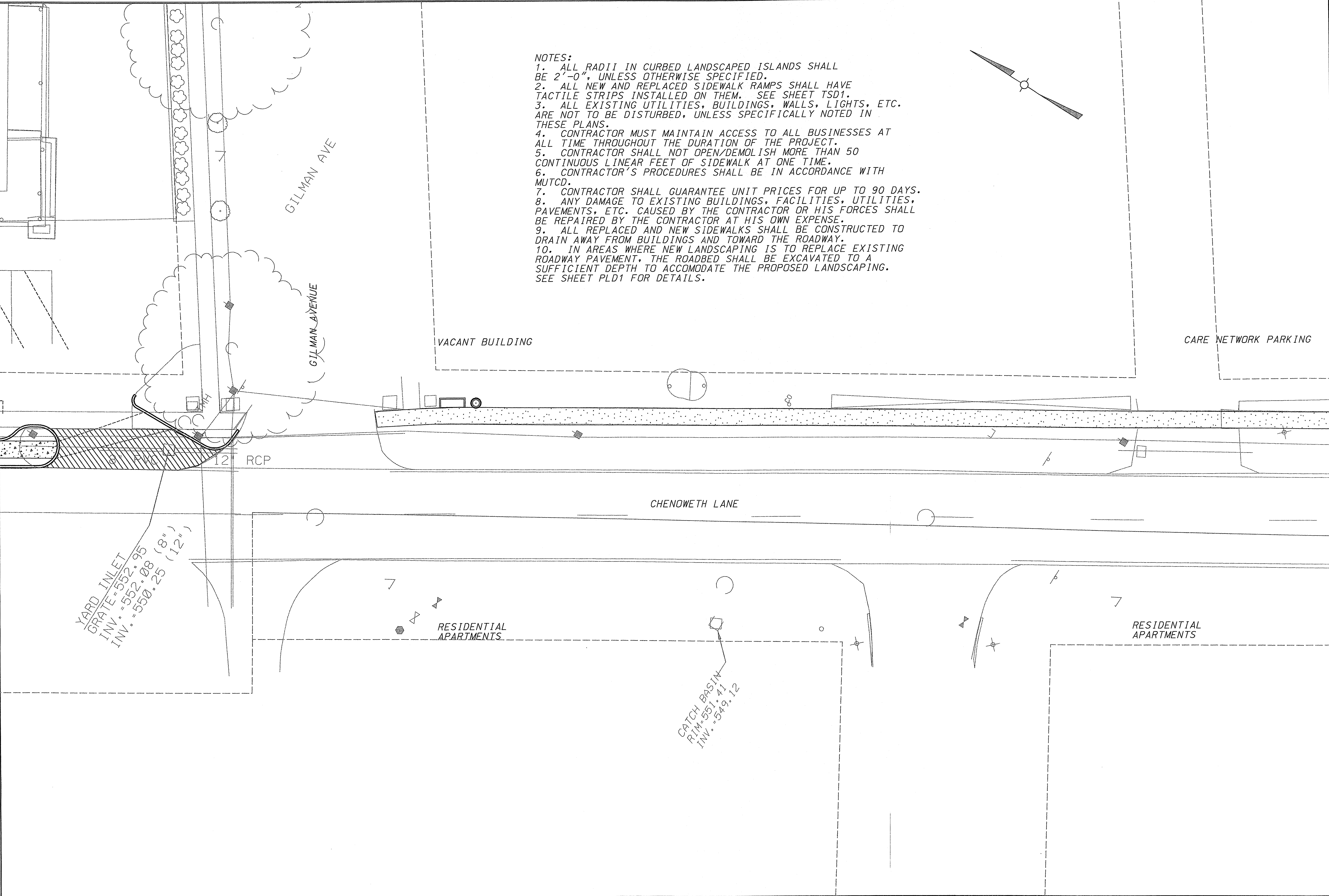
JOEL T. MORRILL
21234
Professional Engineer's Seal

CHENOWETH
LANE

DATE 11/14/05
SCALE 1" = 10'
BY JTM
CHKD BY DR
PROJECT 3400-2

REVISION DESCRIPTION

SHEET
C1



- NOTES:
- 1. ALL RADII IN CURBED LANDSCAPED ISLANDS SHALL BE 2'-0", UNLESS OTHERWISE SPECIFIED.
 - 2. ALL NEW AND REPLACED SIDEWALK RAMPs SHALL HAVE TACTILE STRIPS INSTALLED ON THEM. SEE SHEET TSD1.
 - 3. ALL EXISTING UTILITIES, BUILDINGS, WALLS, LIGHTS, ETC. ARE NOT TO BE DISTURBED, UNLESS SPECIFICALLY NOTED IN THESE PLANS.
 - 4. CONTRACTOR MUST MAINTAIN ACCESS TO ALL BUSINESSES AT ALL TIME THROUGHOUT THE DURATION OF THE PROJECT.
 - 5. CONTRACTOR SHALL NOT OPEN/DEMOLISH MORE THAN 50 CONTINUOUS LINEAR FEET OF SIDEWALK AT ONE TIME.
 - 6. CONTRACTOR'S PROCEDURES SHALL BE IN ACCORDANCE WITH MUTCD.
 - 7. CONTRACTOR SHALL GUARANTEE UNIT PRICES FOR UP TO 90 DAYS.
 - 8. ANY DAMAGE TO EXISTING BUILDINGS, FACILITIES, UTILITIES, PAVEMENTS, ETC. CAUSED BY THE CONTRACTOR OR HIS FORCES SHALL BE REPAIRED BY THE CONTRACTOR AT HIS OWN EXPENSE.
 - 9. ALL REPLACED AND NEW SIDEWALKS SHALL BE CONSTRUCTED TO DRAIN AWAY FROM BUILDINGS AND TOWARD THE ROADWAY.
 - 10. IN AREAS WHERE NEW LANDSCAPING IS TO REPLACE EXISTING ROADWAY PAVEMENT, THE ROADBED SHALL BE EXCAVATED TO A SUFFICIENT DEPTH TO ACCOMMODATE THE PROPOSED LANDSCAPING. SEE SHEET PLD1 FOR DETAILS.

YARD INLET
GRATE = 552.95
INV. = 552.08 (8")
INV. = 550.25 (12")

CATCH BASIN
RIM = 551.41
INV. = 549.12

ST. MATTHEWS BUSINESS DISTRICT
STREETSCAPE PLAN - PHASE TWO
METRO DEVELOPMENT AUTHORITY
LOUISVILLE, KENTUCKY

THE CORRADINO GROUP

ENGINEERS PLANNERS CONSTRUCTORS

CORRADINO

945 SOUTH 4TH STREET
SUITE 300 NORTH
LOUISVILLE, KY 40202
TEL 502.587.7221 FAX 502.587.2866
WWW.CORRADINO.COM

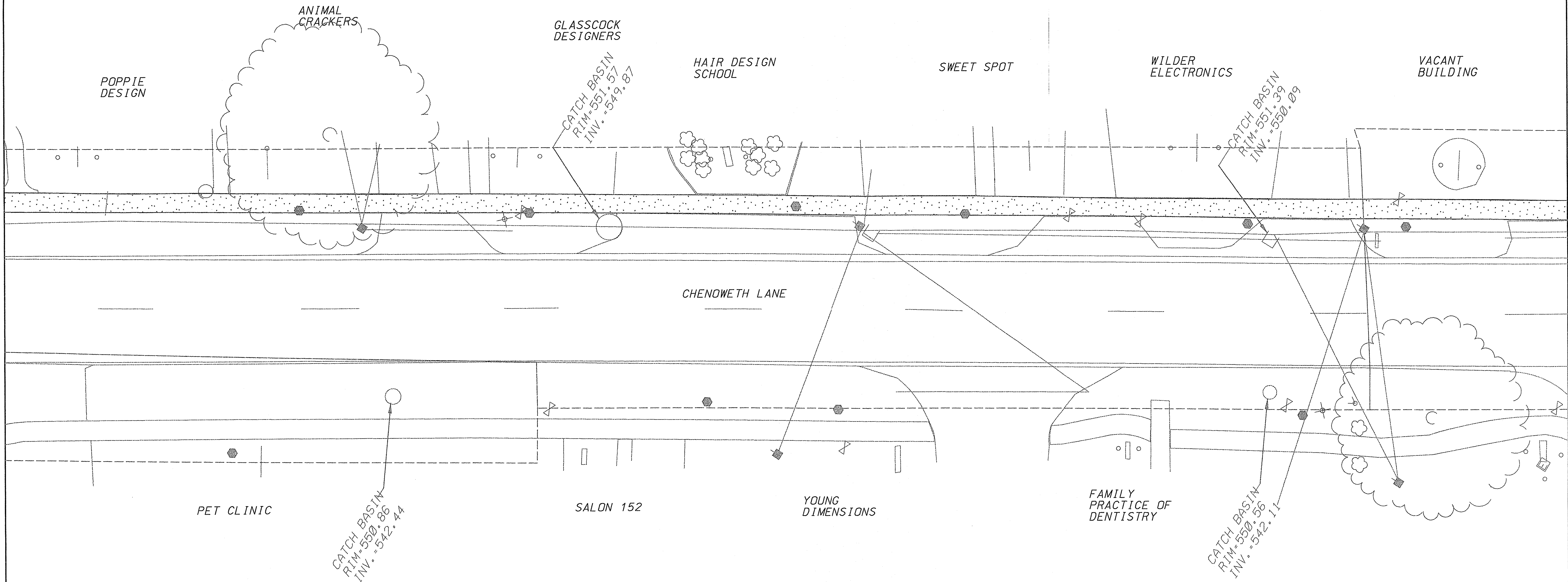
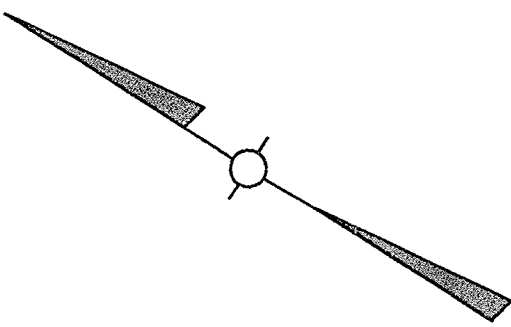
STATE OF KENTUCKY
JOEL T. MORRILL
21224

Engineer's Seal

CHENOWETH
LANE

DATE	11/14/05
SCALE	1" = 10'
BY	JTM
CHKD. BY	DR
PROJECT	3400-2
REVISION	DESCRIPTION
SHEET	
C2	

- NOTES:
- 1. ALL RADII IN CURBED LANDSCAPED ISLANDS SHALL BE 2'-0", UNLESS OTHERWISE SPECIFIED.
 - 2. ALL NEW AND REPLACED SIDEWALK RAMPs SHALL HAVE TACTILE STRIPS INSTALLED ON THEM. SEE SHEET TSD1.
 - 3. ALL EXISTING UTILITIES, BUILDINGS, WALLS, LIGHTS, ETC. ARE NOT TO BE DISTURBED, UNLESS SPECIFICALLY NOTED IN THESE PLANS.
 - 4. CONTRACTOR MUST MAINTAIN ACCESS TO ALL BUSINESSES AT ALL TIME THROUGHOUT THE DURATION OF THE PROJECT.
 - 5. CONTRACTOR SHALL NOT OPEN/DEMOLISH MORE THAN 50 CONTINUOUS LINEAR FEET OF SIDEWALK AT ONE TIME.
 - 6. CONTRACTOR'S PROCEDURES SHALL BE IN ACCORDANCE WITH MUTCD.
 - 7. CONTRACTOR SHALL GUARANTEE UNIT PRICES FOR UP TO 90 DAYS.
 - 8. ANY DAMAGE TO EXISTING BUILDINGS, FACILITIES, UTILITIES, PAVEMENTS, ETC. CAUSED BY THE CONTRACTOR OR HIS FORCES SHALL BE REPAIRED BY THE CONTRACTOR AT HIS OWN EXPENSE.
 - 9. ALL REPLACED AND NEW SIDEWALKS SHALL BE CONSTRUCTED TO DRAIN AWAY FROM BUILDINGS AND TOWARD THE ROADWAY.
 - 10. IN AREAS WHERE NEW LANDSCAPING IS TO REPLACE EXISTING ROADWAY PAVEMENT, THE ROADBED SHALL BE EXCAVATED TO A SUFFICIENT DEPTH TO ACCOMMODATE THE PROPOSED LANDSCAPING. SEE SHEET PLD1 FOR DETAILS.



ST. MATTHEWS BUSINESS DISTRICT
STREETSCAPE PLAN - PHASE TWO
METRO DEVELOPMENT AUTHORITY
LOUISVILLE, KENTUCKY

THE CORRADINO GROUP

ENGINEERS	PLANNERS	CONSTRUCTORS
-----------	----------	--------------

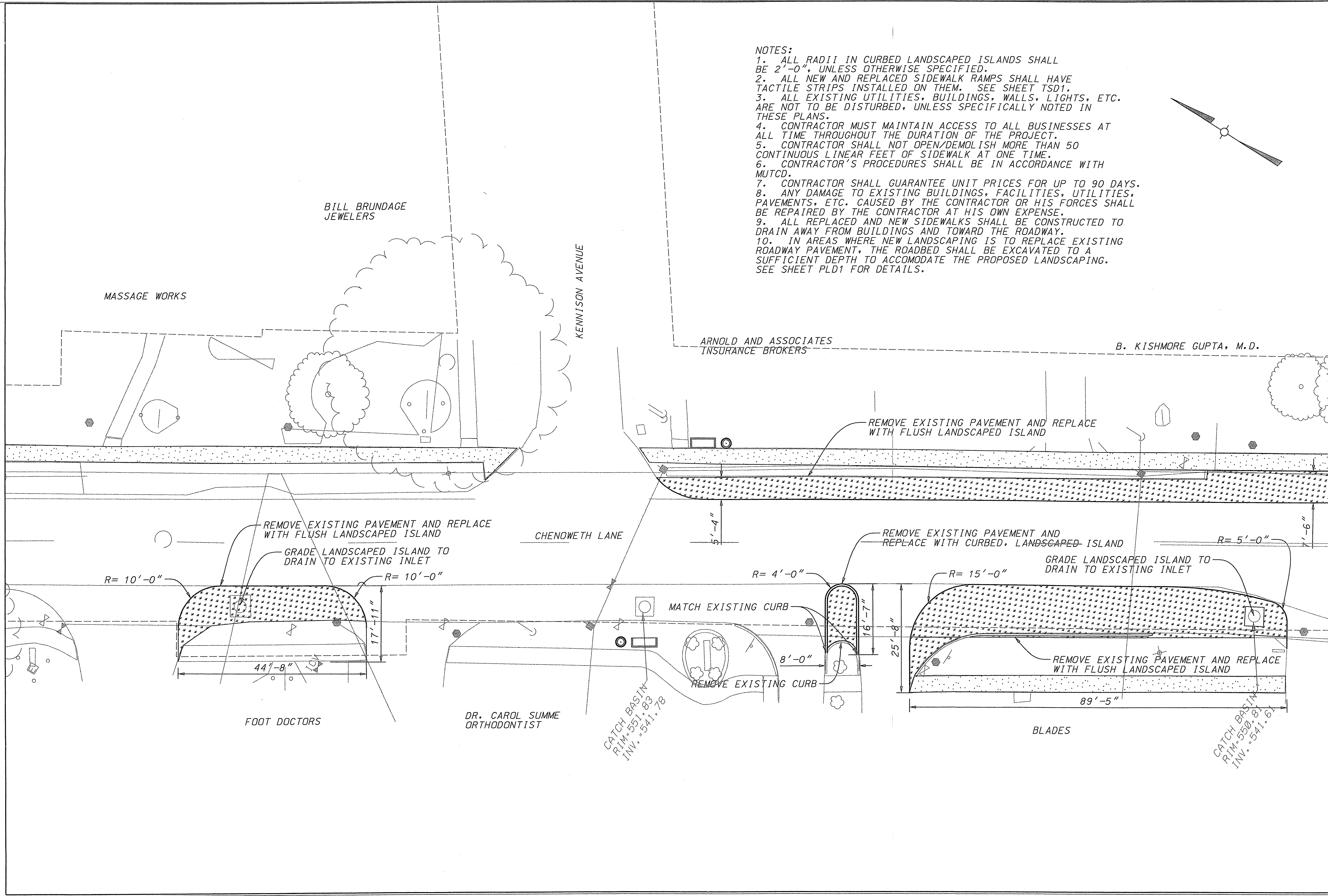
200 SOUTH FIFTH STREET
SUITE 300 NORTH
LOUISVILLE, KY 40202
WWW.CORRADINO.COM

STATE OF KENTUCKY
JOEL T. MCDONALD
Professional Engineer
No. 10000
Exp. 12/31/2008
Seal

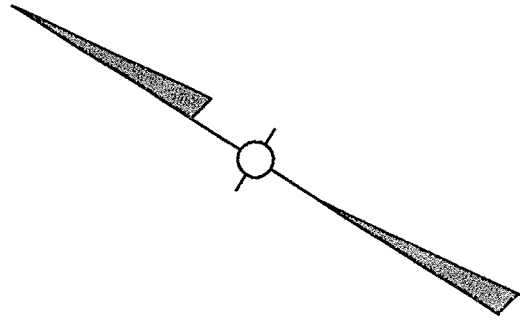
CHENOWETH LANE

DATE	11/14/05
SCALE	1" = 10'
BY	JTM
CHKD BY	DR
PROJECT	3400-2
REVISION	DESCRIPTION

SHEET
C4

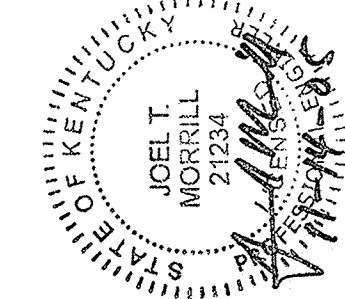


- NOTES:
1. ALL RADII IN CURBED LANDSCAPED ISLANDS SHALL BE 2'-0", UNLESS OTHERWISE SPECIFIED.
 2. ALL NEW AND REPLACED SIDEWALK RAMPS SHALL HAVE TACTILE STRIPS INSTALLED ON THEM. SEE SHEET TSD1.
 3. ALL EXISTING UTILITIES, BUILDINGS, WALLS, LIGHTS, ETC. ARE NOT TO BE DISTURBED, UNLESS SPECIFICALLY NOTED IN THESE PLANS.
 4. CONTRACTOR MUST MAINTAIN ACCESS TO ALL BUSINESSES AT ALL TIME THROUGHOUT THE DURATION OF THE PROJECT.
 5. CONTRACTOR SHALL NOT OPEN/DEMOLISH MORE THAN 50 CONTINUOUS LINEAR FEET OF SIDEWALK AT ONE TIME.
 6. CONTRACTOR'S PROCEDURES SHALL BE IN ACCORDANCE WITH MUTCD.
 7. CONTRACTOR SHALL GUARANTEE UNIT PRICES FOR UP TO 90 DAYS.
 8. ANY DAMAGE TO EXISTING BUILDINGS, FACILITIES, UTILITIES, PAVEMENTS, ETC. CAUSED BY THE CONTRACTOR OR HIS FORCES SHALL BE REPAIRED BY THE CONTRACTOR AT HIS OWN EXPENSE.
 9. ALL REPLACED AND NEW SIDEWALKS SHALL BE CONSTRUCTED TO DRAIN AWAY FROM BUILDINGS AND TOWARD THE ROADWAY.
 10. IN AREAS WHERE NEW LANDSCAPING IS TO REPLACE EXISTING ROADWAY PAVEMENT, THE ROADBED SHALL BE EXCAVATED TO A SUFFICIENT DEPTH TO ACCOMODATE THE PROPOSED LANDSCAPING. SEE SHEET PLD1 FOR DETAILS.



ST. MATTHEWS BUSINESS DISTRICT
STREETSCAPE PLAN - PHASE TWO
METRO DEVELOPMENT AUTHORITY
LOUISVILLE, KENTUCKY

THE CORRADINO GROUP
ENGINEERS PLANNERS CONSTRUCTORS
CORRADINO
200 SOUTH FIFTH STREET
SUITE 300 NORTH LOUISVILLE, KY 40202
TEL: 502.581.2600 FAX: 502.581.2606
WWW.CORRADINO.COM



CHENOWETH
LANE

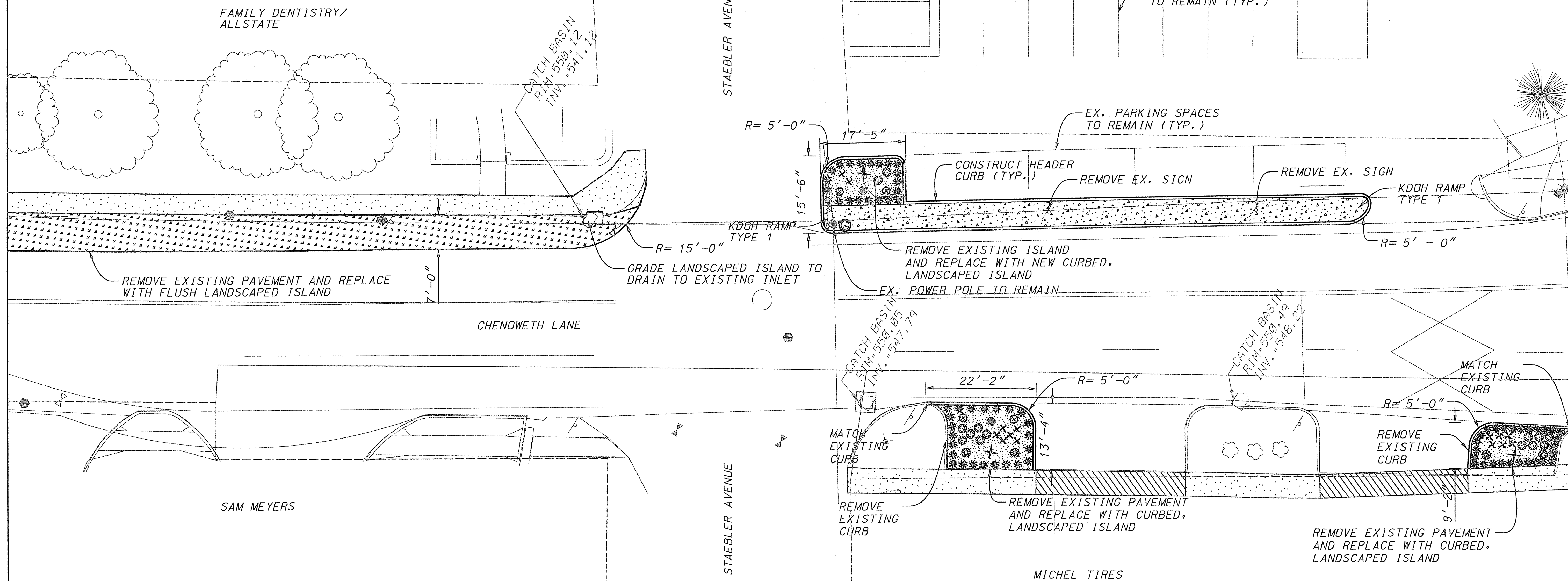
DATE	11/14/05
SCALE	1" = 10'
BY	JTM
CHKD BY	DR
PROJECT	3400-2

REVISION	DESCRIPTION
----------	-------------

SHEET
C5

NOTES:

1. ALL RADII IN CURBED LANDSCAPED ISLANDS SHALL BE 2'-0", UNLESS OTHERWISE SPECIFIED.
2. ALL NEW AND REPLACED SIDEWALK RAMPS SHALL HAVE TACTILE STRIPS INSTALLED ON THEM. SEE SHEET TSD1.
3. ALL EXISTING UTILITIES, BUILDINGS, WALLS, LIGHTS, ETC. ARE NOT TO BE DISTURBED, UNLESS SPECIFICALLY NOTED IN THESE PLANS.
4. CONTRACTOR MUST MAINTAIN ACCESS TO ALL BUSINESSES AT ALL TIME THROUGHOUT THE DURATION OF THE PROJECT.
5. CONTRACTOR SHALL NOT OPEN/DEMOLISH MORE THAN 50 CONTINUOUS LINEAR FEET OF SIDEWALK AT ONE TIME.
6. CONTRACTOR'S PROCEDURES SHALL BE IN ACCORDANCE WITH MUTCD.
7. CONTRACTOR SHALL GUARANTEE UNIT PRICES FOR UP TO 90 DAYS.
8. ANY DAMAGE TO EXISTING BUILDINGS, FACILITIES, UTILITIES, PAVEMENTS, ETC. CAUSED BY THE CONTRACTOR OR HIS FORCES SHALL BE REPAIRED BY THE CONTRACTOR AT HIS OWN EXPENSE.
9. ALL REPLACED AND NEW SIDEWALKS SHALL BE CONSTRUCTED TO DRAIN AWAY FROM BUILDINGS AND TOWARD THE ROADWAY.
10. IN AREAS WHERE NEW LANDSCAPING IS TO REPLACE EXISTING ROADWAY PAVEMENT, THE ROADBED SHALL BE EXCAVATED TO A SUFFICIENT DEPTH TO ACCOMMODATE THE PROPOSED LANDSCAPING. SEE SHEET PLD1 FOR DETAILS.



ST. MATTHEWS BUSINESS DISTRICT
STREETSCAPE PLAN - PHASE TWO
METRO DEVELOPMENT AUTHORITY
LOUISVILLE, KENTUCKY

THE CORRADIO GROUP
ENGINEERS PLANNERS CONSTRUCTORS
200 SOUTH 8TH STREET
SUITE 300 NORTH LOUISVILLE, KY 40202
TEL 502.587.7221 FAX 502.587.2886
WWW.CORRADIO.COM

KENTUCKY
JOEL T. MONSIELL
2100
11/14/05
Engineer's Seal

CHENOWETH
LANE

DATE 11/14/05
SCALE 1" = 10'
BY JTM
CHKD BY DR
PROJECT 3400-2

REVISION DESCRIPTION

SHEET
C6

- PAUL'S
MARKET

DIG'S

CHENOWETH LANE

CSX RAILROAD

THOMAS
CAR WASH

CATCH BASIN
RIM=551.04
INV.=548.74

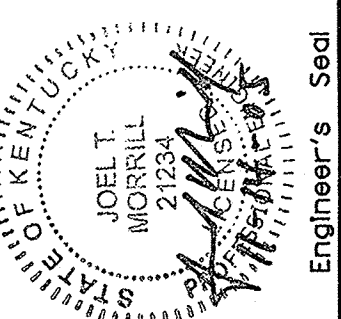
CATCH BASIN
RIM=551.03
INV.=546.87

ST. MATTHEWS BUSINESS DISTRICT
STREETSCAPE PLAN - PHASE TWO
METRO DEVELOPMENT AUTHORITY
LOUISVILLE, KENTUCKY

THE CORRADINO GROUP

200 SOUTH FIFTH STREET
SUITE 300 NORTH LOUISVILLE, KY 40202
TEL 502.587.7221 FAX 502.587.2656
WWW.CORRADINO.COM

CORRADINO



© 2007 The Authors
Journal compilation © 2007 Blackwell Publishing Ltd

CHENOWETH
LANE

DATE	11/14/05
SCALE	1" = 10'
BY	JTM
CHECKED BY	DR
PROJECT	3400-2

REVISION	DESCRIPTION
----------	-------------

MEET

C7

- NOTES:
1. ALL RADII IN CURBED LANDSCAPED ISLANDS SHALL BE 2'-0", UNLESS OTHERWISE SPECIFIED.
 2. ALL NEW AND REPLACED SIDEWALK RAMPS SHALL HAVE TACTILE STRIPS INSTALLED ON THEM. SEE SHEET TSD1.
 3. ALL EXISTING UTILITIES, BUILDINGS, WALLS, LIGHTS, ETC. ARE NOT TO BE DISTURBED, UNLESS SPECIFICALLY NOTED IN THESE PLANS.
 4. CONTRACTOR MUST MAINTAIN ACCESS TO ALL BUSINESSES AT ALL TIME THROUGHOUT THE DURATION OF THE PROJECT.
 5. CONTRACTOR SHALL NOT OPEN/DEMOLISH MORE THAN 50 CONTINUOUS LINEAR FEET OF SIDEWALK AT ONE TIME.
 6. CONTRACTOR'S PROCEDURES SHALL BE IN ACCORDANCE WITH MUTCD.
 7. CONTRACTOR SHALL GUARANTEE UNIT PRICES FOR UP TO 90 DAYS.
 8. ANY DAMAGE TO EXISTING BUILDINGS, FACILITIES, UTILITIES, PAVEMENTS, ETC. CAUSED BY THE CONTRACTOR OR HIS FORCES SHALL BE REPAIRED BY THE CONTRACTOR AT HIS OWN EXPENSE.
 9. ALL REPLACED AND NEW SIDEWALKS SHALL BE CONSTRUCTED TO DRAIN AWAY FROM BUILDINGS AND TOWARD THE ROADWAY.
 10. IN AREAS WHERE NEW LANDSCAPING IS TO REPLACE EXISTING ROADWAY PAVEMENT, THE ROADBED SHALL BE EXCAVATED TO A SUFFICIENT DEPTH TO ACCOMMODATE THE PROPOSED LANDSCAPING. SEE SHEET PLD1 FOR DETAILS.

CHENOWETH LANE

WESTPORT ROAD

NATIONAL
CITY BANK

SEE SHEETS S1 AND S2 FOR PROPOSED
WORK ON SHELBYVILLE ROAD

SEE SHEETS S1 AND S2 FOR PROPOSED
WORK ON SHELBYVILLE ROAD

CATCH BASIN
RIM: 549.82
INV.: 547.77

WHITE CASTLE
(FORMERLY)

SHELBYVILLE ROAD

PNC BANK

ST. MATTHEWS BUSINESS DISTRICT
STREETSCAPE PLAN - PHASE TWO
METRO DEVELOPMENT AUTHORITY
LOUISVILLE, KENTUCKY

THE CORRADINO GROUP

ENGINEERS PLANNERS CONSTRUCTORS
200 SOUTH 15TH STREET
SUITE 300 NORTH LOUISVILLE, KY 40202
TEL 502.587.7221 FAX 502.587.2886
WWW.CORRADINO.COM



Engineer's Seal

CHENOWETH
LANE

DATE	11/14/05
SCALE	
BY	JTM
CHKD BY	DR
PROJECT	3400-2

REVISION	DESCRIPTION
----------	-------------

SHEET

C8