

Appendix A: Study Area Photos



KY 91 (Marion Rd) at schools, looking north



“Druthers Corner” or US 62 (Main St) at KY 91 (Marion Rd) looking northwest



US 62 (Main St) looking southeast



KY 91-1 (Main St) looking east from courthouse



KY 91 (Market St) looking west towards downtown



KY 139 (S Jefferson St) looking south to overpass

Appendix A: Study Area Photos



KY 2080 (Cadiz Rd) looking north to overpass



US 62 (N Jefferson St) looking north from Adsmore House



US 62 (Dawson Rd) looking southwest to KY 3114 (E Young St)



US 62 at McGoodwin Ave, looking northeast



US 62 (N Jefferson St) looking southeast to ditch at Green St intersection



US 62 (Main St) looking east towards downtown

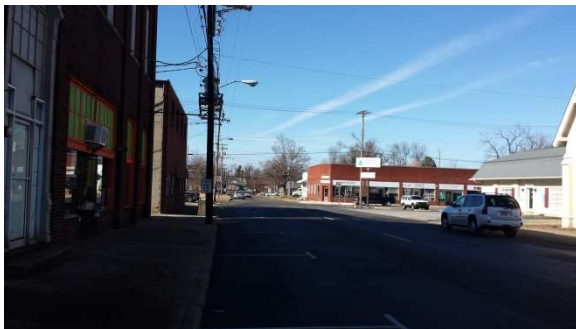
Appendix A: Study Area Photos



Looking southeast to "Five Leg" intersection at KY 91/Main St/Washington St



Drainage structure, Market St at Hawthorne St



US 62 (Main St) looking west from courthouse sq



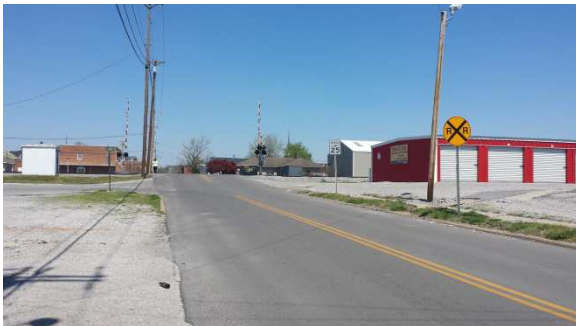
US 62 (Market St) looking west from courthouse sq



US 62 (N Jefferson St) looking north near Adsmore House



Local truck route along Legion St facing KY 139/KY 293 intersection



Local truck route along Seminary St looking north to rail line



Local truck route along Seminary St looking north to Green St intersection