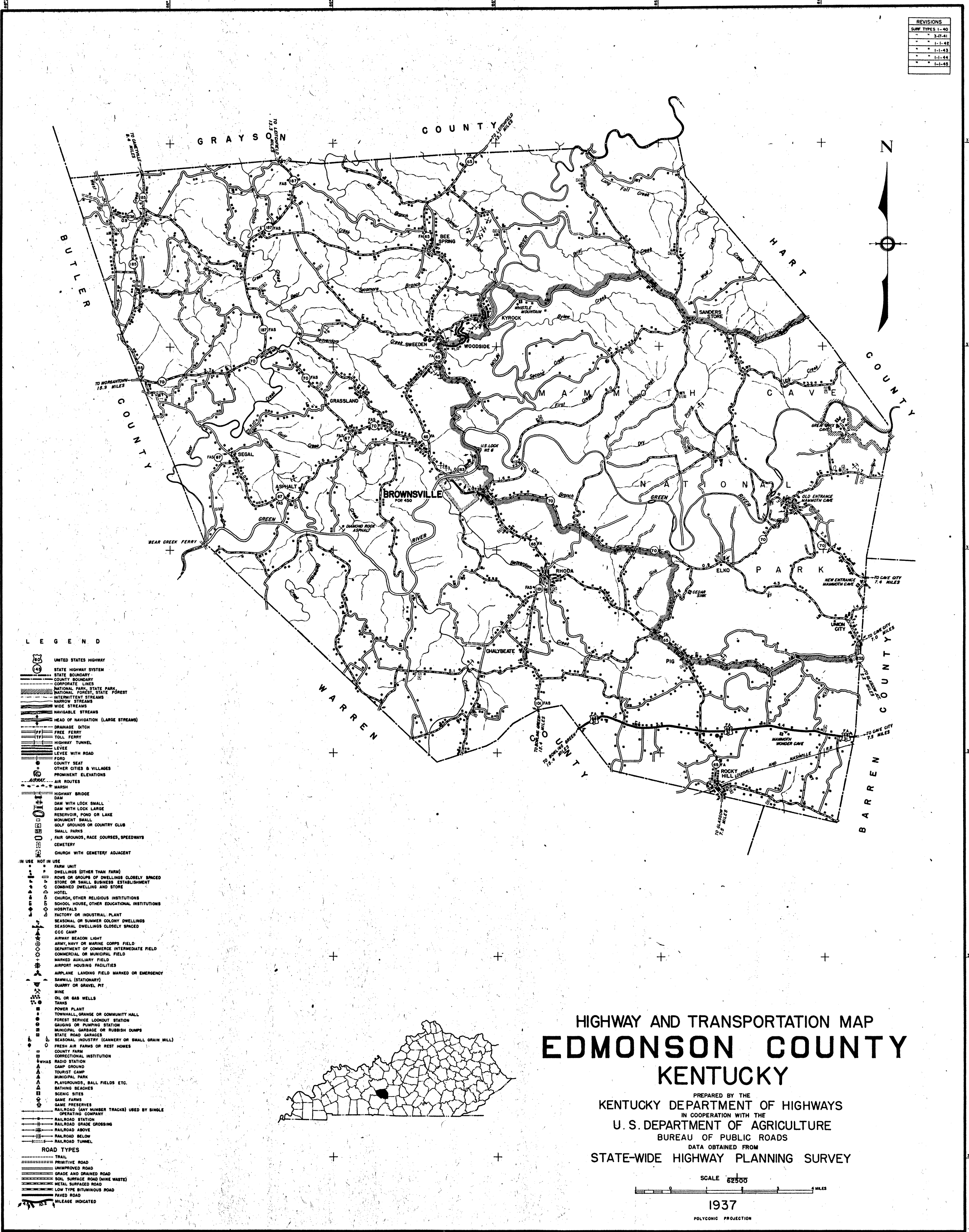
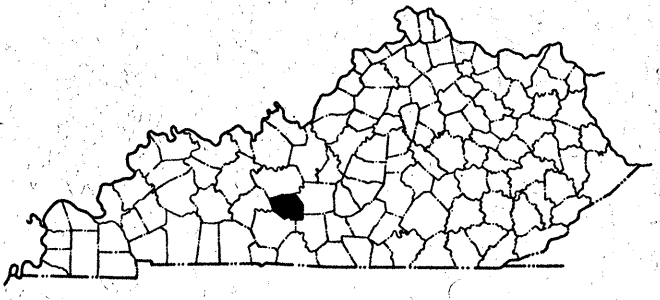


REVISIONS	
DATE	DESCRIPTION
3-21-41	1-1-41
1-1-42	1-1-42
1-1-43	1-1-43
1-1-44	1-1-44
1-1-45	1-1-45



LEGEND

- UNITED STATES HIGHWAY
 - STATE HIGHWAY SYSTEM
 - STATE BOUNDARY
 - COUNTY BOUNDARY
 - CORPORATE LINES
 - NATIONAL PARK, STATE PARK
 - NATIONAL FOREST, STATE FOREST
 - INTERMITTENT STREAMS
 - NARROW STREAMS
 - WIDE STREAMS
 - NAVIGABLE STREAMS
 - HEAD OF NAVIGATION (LARGE STREAMS)
 - DRAINAGE DITCH
 - FREE FERRY
 - TOLL FERRY
 - HIGHWAY TUNNEL
 - LEVEE
 - LEVEE WITH ROAD
 - LAND
 - COUNTY SEAT
 - OTHER CITIES & VILLAGES
 - PROMINENT ELEVATIONS
 - AIR ROUTES
 - MARSHES
 - HIGHWAY BRIDGE
 - DAM
 - DAM WITH LOCK SMALL
 - DAM WITH LOCK LARGE
 - RESERVOIR, POND OR LAKE
 - MONUMENT SMALL
 - GOLF GROUNDS OR COUNTRY CLUB
 - SMALL PARKS
 - FAIR GROUNDS, RACE COURSES, SPEEDWAYS
 - CEMETERY
 - CHURCH WITH CEMETERY ADJACENT
- IN USE NOT IN USE**
- FARM UNIT
 - DWELLING (OTHER THAN FARM)
 - ROWS OR GROUPS OF DWELLINGS CLOSELY SPACED
 - STORE OR SMALL BUSINESS ESTABLISHMENT
 - COMBINED DWELLING AND STORE
 - HOTEL
 - SCHOOL, OTHER RELIGIOUS INSTITUTIONS
 - CHURCH, HOUSE, OTHER EDUCATIONAL INSTITUTIONS
 - HOSPITALS
 - FACTORY OR INDUSTRIAL PLANT
 - SEASONAL OR SUMMER COLONY DWELLINGS
 - SEASONAL DWELLINGS CLOSELY SPACED
 - CCC CAMP
 - ARMY BEACON LIGHT
 - ARMY, NAVY OR MARINE CORPS FIELD
 - DEPARTMENT OF COMMERCE INTERMEDIATE FIELD
 - COMMERCIAL OR MUNICIPAL FIELD
 - MARKED AUXILIARY FIELD
 - AIRPORT, HOUSING FACILITIES
 - AIRPLANE LANDING FIELD MARKED OR EMERGENCY
 - SAWMILL (STATIONARY)
 - QUARRY OR GRAVEL PIT
 - MINE
 - OIL OR GAS WELLS
 - TANKS
 - POWER PLANT
 - TOWNHALL, GRAND OR COMMUNITY HALL
 - FOREST SERVICE LOOKOUT STATION
 - GAUGING OR PUMPING STATION
 - MUNICIPAL GARAGE OR RUBBISH CANS
 - STATE ROAD GARAGES
 - SEASONAL INDUSTRY (CANNERY OR SMALL GRAIN MILL)
 - FRESH AIR FARMS OR REST HOMES
 - COUNTY FARM
 - CORRECTIONAL INSTITUTION
 - NAVAL RADIO STATION
 - CAMP GROUND
 - TOURIST CAMP
 - MUNICIPAL PARK
 - PLAYGROUNDS, BALL FIELDS ETC.
 - BATHING BEACHES
 - SCENIC SITES
 - GAME FARMS
 - GAME PRESERVES
 - OPERATING COMPANY
 - RAILROAD STATION
 - RAILROAD GRADE CROSSING
 - RAILROAD ABOVE
 - RAILROAD BELOW
 - RAILROAD TUNNEL
- ROAD TYPES**
- TRAIL
 - PRIMITIVE ROAD
 - UNIMPROVED ROAD
 - GRADE AND DRAINED ROAD
 - SOIL SURFACE ROAD (WINE WASTE)
 - METAL SURFACE ROAD
 - LOW TYPE BITUMINOUS ROAD
 - PAVED ROAD
 - MILEAGE INDICATED



HIGHWAY AND TRANSPORTATION MAP EDMONSON COUNTY KENTUCKY

PREPARED BY THE
KENTUCKY DEPARTMENT OF HIGHWAYS
IN COOPERATION WITH THE
U. S. DEPARTMENT OF AGRICULTURE
BUREAU OF PUBLIC ROADS
DATA OBTAINED FROM
STATE-WIDE HIGHWAY PLANNING SURVEY

