

# Transportation Systems Branch Information

# Transportation Systems Branch

## Branch Manager – Carol Brent

- Systems Team
  - Crystal Casey
  - Bonnie Lynch
  - Dawn Mattingly
  - Gretchen Sanford
  - Josh Wentz
  - Ed Whittaker
- Cartography Team:
  - Bill Hieronymus
  - David Otte

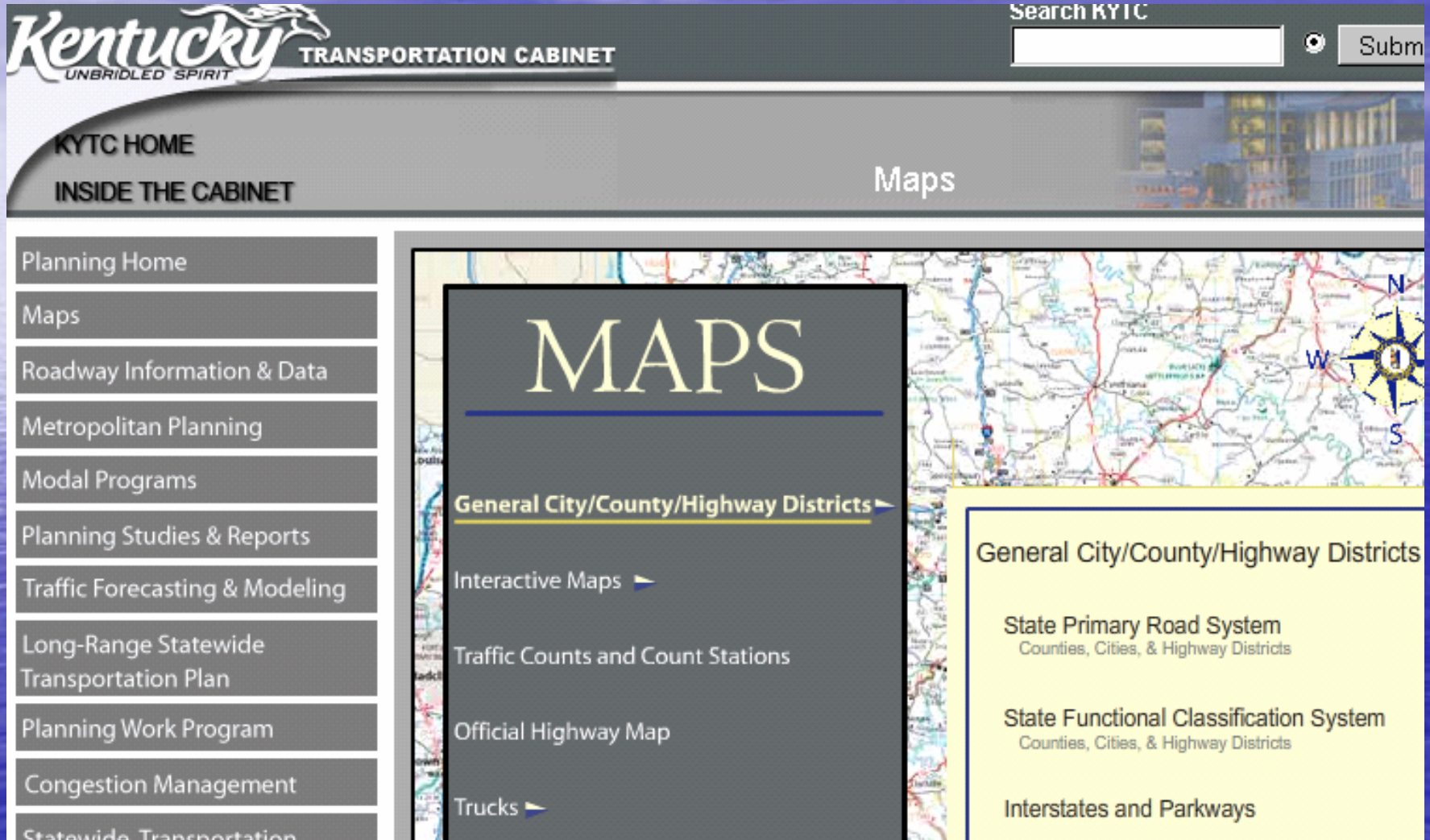
# Branch Responsibilities

- Mapping
- Systems designations
- Official Orders
- New alignment tracking
- Coal Haul Routing and Reporting

# Mapping/Cartography

- Official Highway Map
- County/City/District maps
  - SPRS
  - Functional
  - Traffic Counts (by TEMAC)
- All counties/cities/districts on web
- Analysis and special project maps
- Interactive maps: HIS, RSR, Geonet

[www.planning.kytc.ky.gov/maps.asp](http://www.planning.kytc.ky.gov/maps.asp)



The screenshot shows the 'Maps' page of the Kentucky Transportation Cabinet's planning website. The header features the KYTC logo with the tagline 'UNBRIDLED SPIRIT' and a search bar labeled 'Search KYTC'. Below the header, a navigation bar includes 'KYTC HOME', 'INSIDE THE CABINET', and the 'Maps' section. A left sidebar lists various planning topics, with 'Maps' highlighted. The main content area is titled 'MAPS' and lists several map categories, each with a right-pointing arrow: 'General City/County/Highway Districts', 'Interactive Maps', 'Traffic Counts and Count Stations', 'Official Highway Map', and 'Trucks'. To the right of this list is a large map of Kentucky with a yellow rectangle highlighting a specific region. A compass rose is visible in the top right corner of the map. Below the map, a yellow box contains a list of map types: 'General City/County/Highway Districts', 'State Primary Road System' (with subtext 'Counties, Cities, & Highway Districts'), 'State Functional Classification System' (with subtext 'Counties, Cities, & Highway Districts'), and 'Interstates and Parkways'.

**Kentucky** TRANSPORTATION CABINET  
UNBRIDLED SPIRIT

Search KYTC

KYTC HOME  
INSIDE THE CABINET  
Maps

Planning Home  
Maps  
Roadway Information & Data  
Metropolitan Planning  
Modal Programs  
Planning Studies & Reports  
Traffic Forecasting & Modeling  
Long-Range Statewide Transportation Plan  
Planning Work Program  
Congestion Management  
Statewide Transportation

# MAPS

- General City/County/Highway Districts ▶
- Interactive Maps ▶
- Traffic Counts and Count Stations
- Official Highway Map
- Trucks ▶

General City/County/Highway Districts

State Primary Road System  
Counties, Cities, & Highway Districts

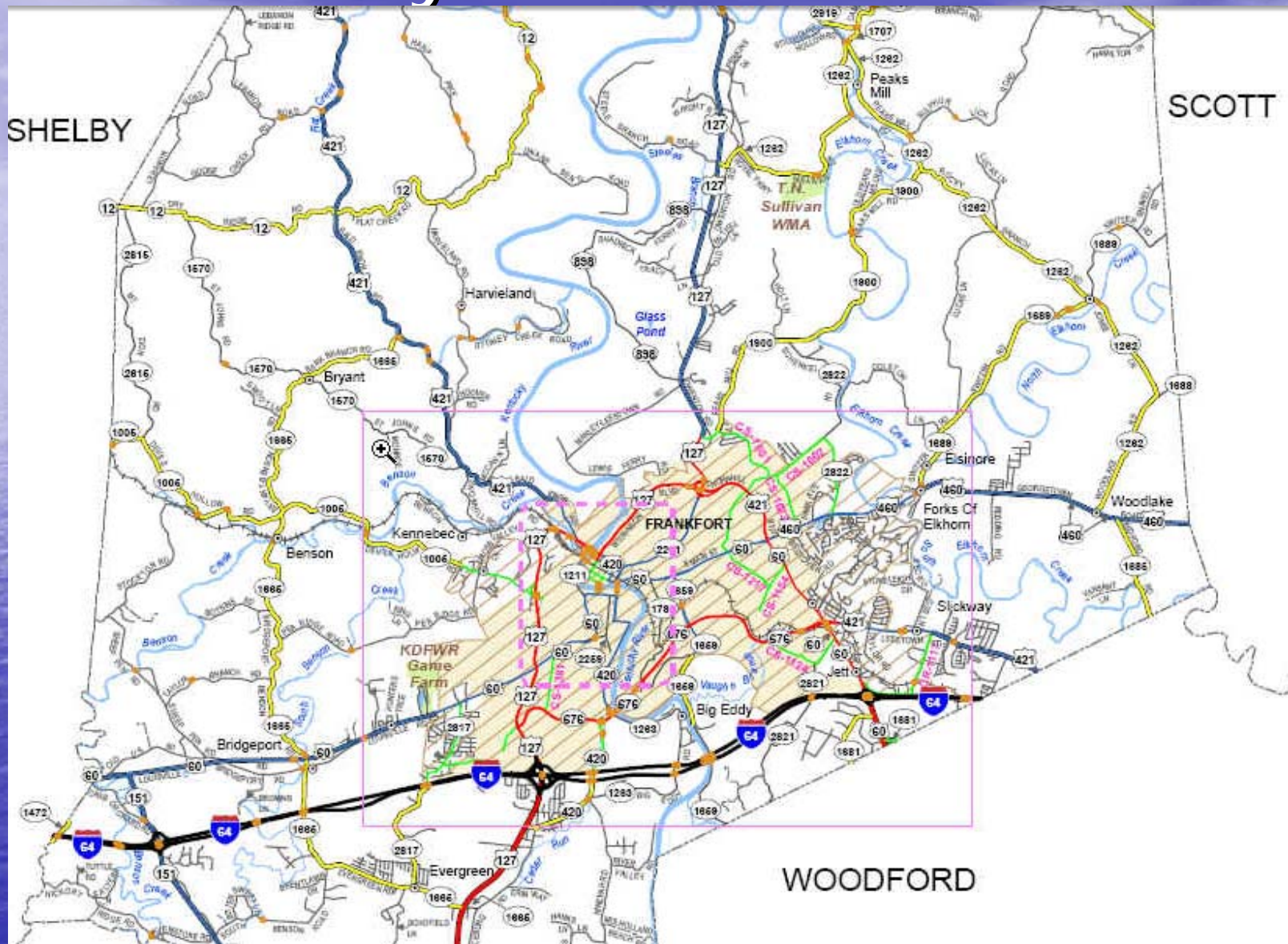
State Functional Classification System  
Counties, Cities, & Highway Districts

Interstates and Parkways

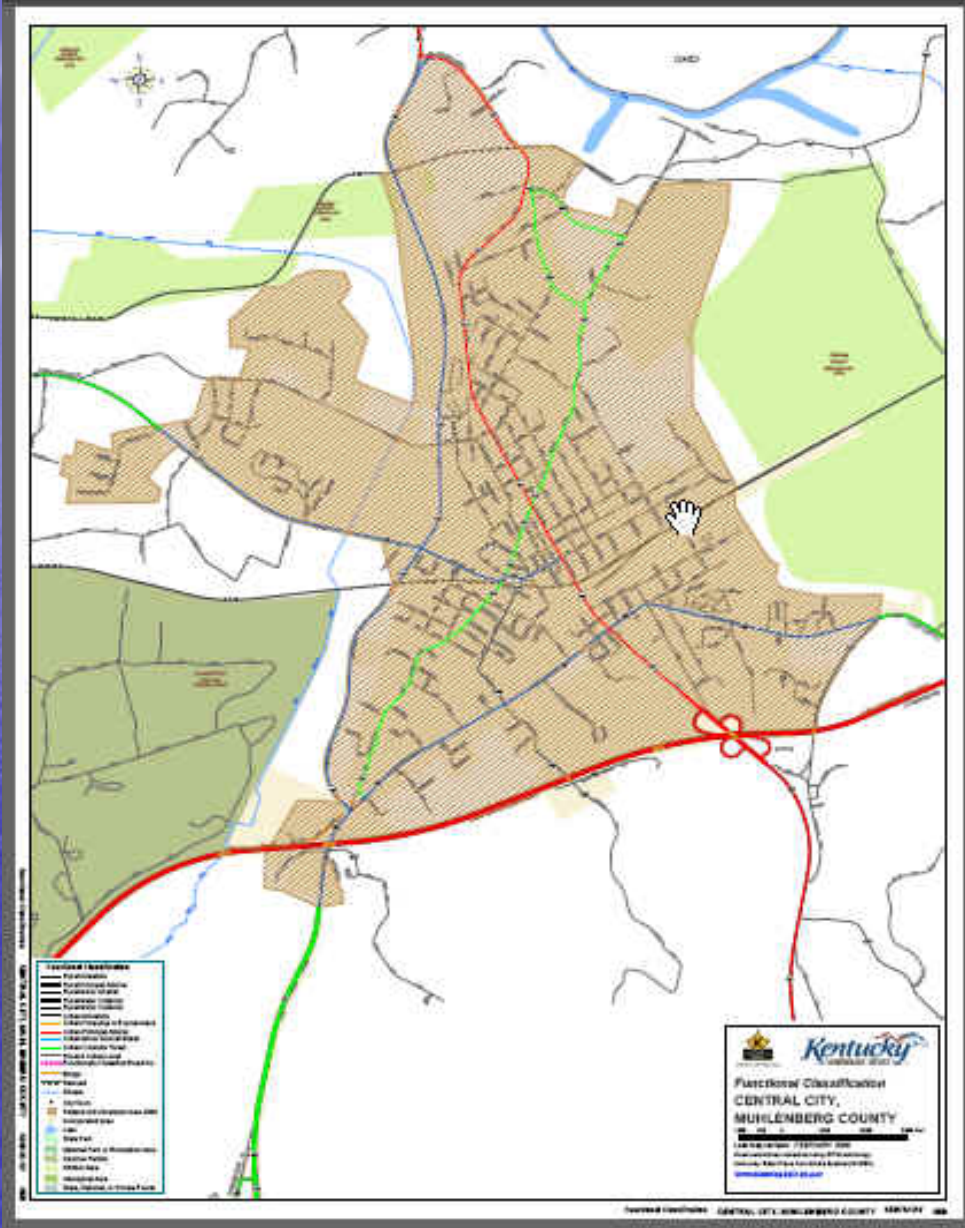
# County State Primary Road System



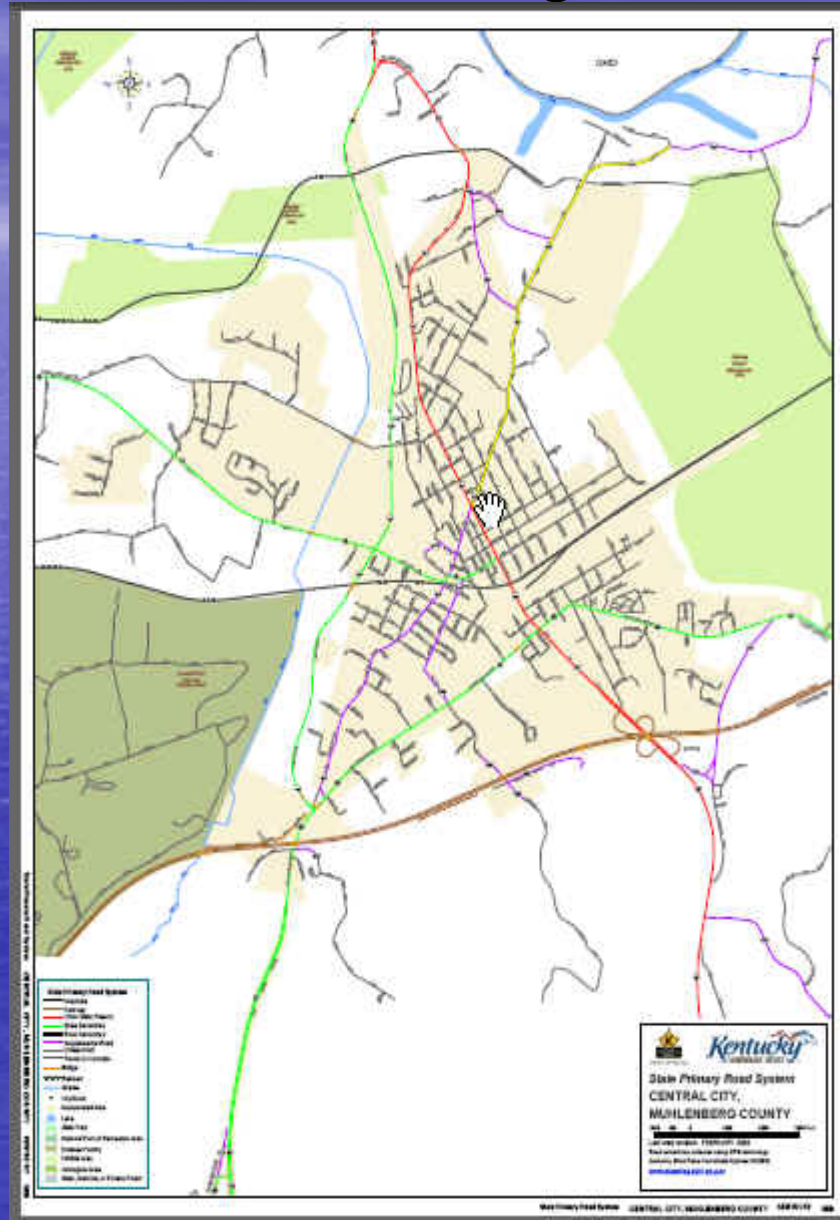
# County Functional Class




# Urban Functional Classification



# Urban State Primary Road System



# Available Boundary Maps



**Kentucky**  
UNBRIDLED SPIRIT

TRANSPORTATION CABINET

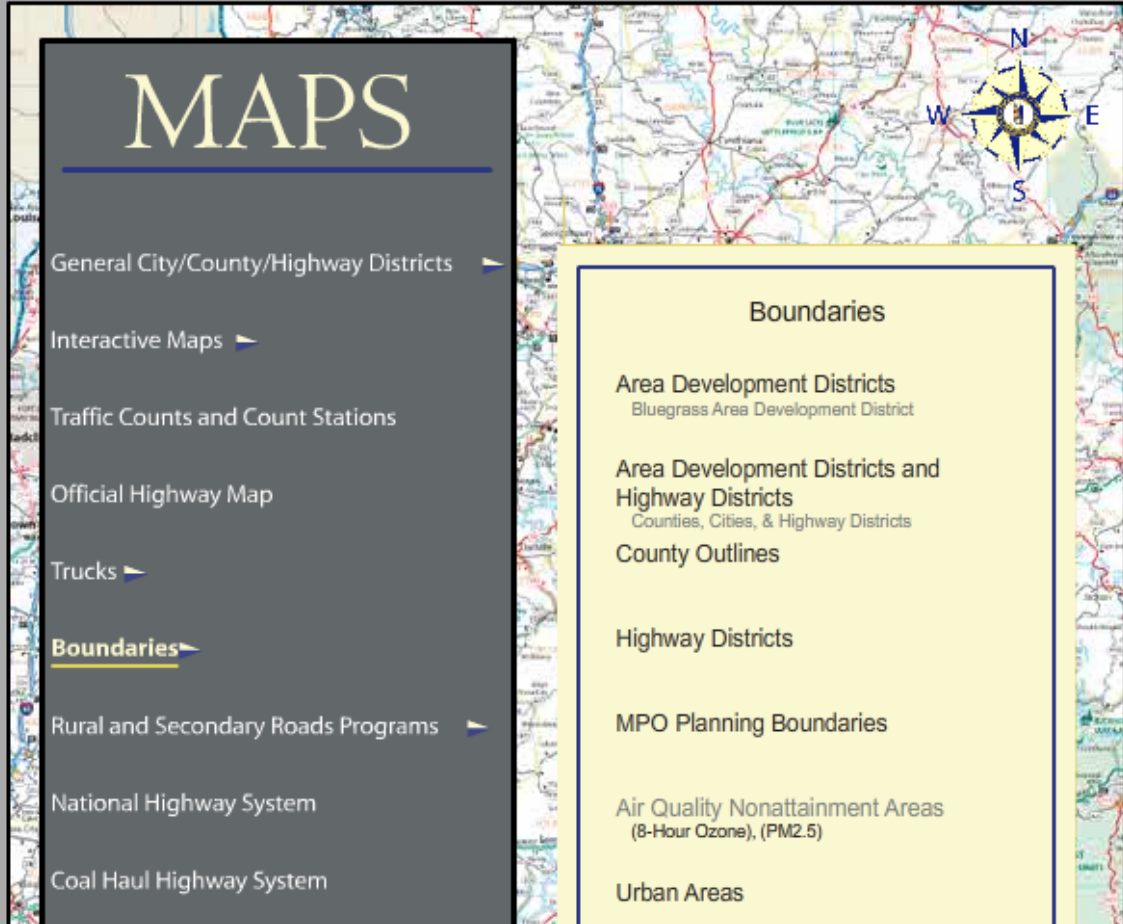
Search KYTC

Submit

KYTC HOME

INSIDE THE CABINET

Maps



## MAPS

- General City/County/Highway Districts ▶
- Interactive Maps ▶
- Traffic Counts and Count Stations
- Official Highway Map
- Trucks ▶
- Boundaries ▶**
  - Area Development Districts
    - Bluegrass Area Development District
  - Area Development Districts and Highway Districts
    - Counties, Cities, & Highway Districts
  - County Outlines
  - Highway Districts
  - MPO Planning Boundaries
  - Air Quality Nonattainment Areas
    - (8-Hour Ozone), (PM2.5)
  - Urban Areas
- Rural and Secondary Roads Programs ▶
- National Highway System
- Coal Haul Highway System

Planning Home

Maps

Roadway Information & Data

Metropolitan Planning

Modal Programs

Planning Studies & Reports

Traffic Forecasting & Modeling

Long-Range Statewide Transportation Plan

Planning Work Program

Congestion Management

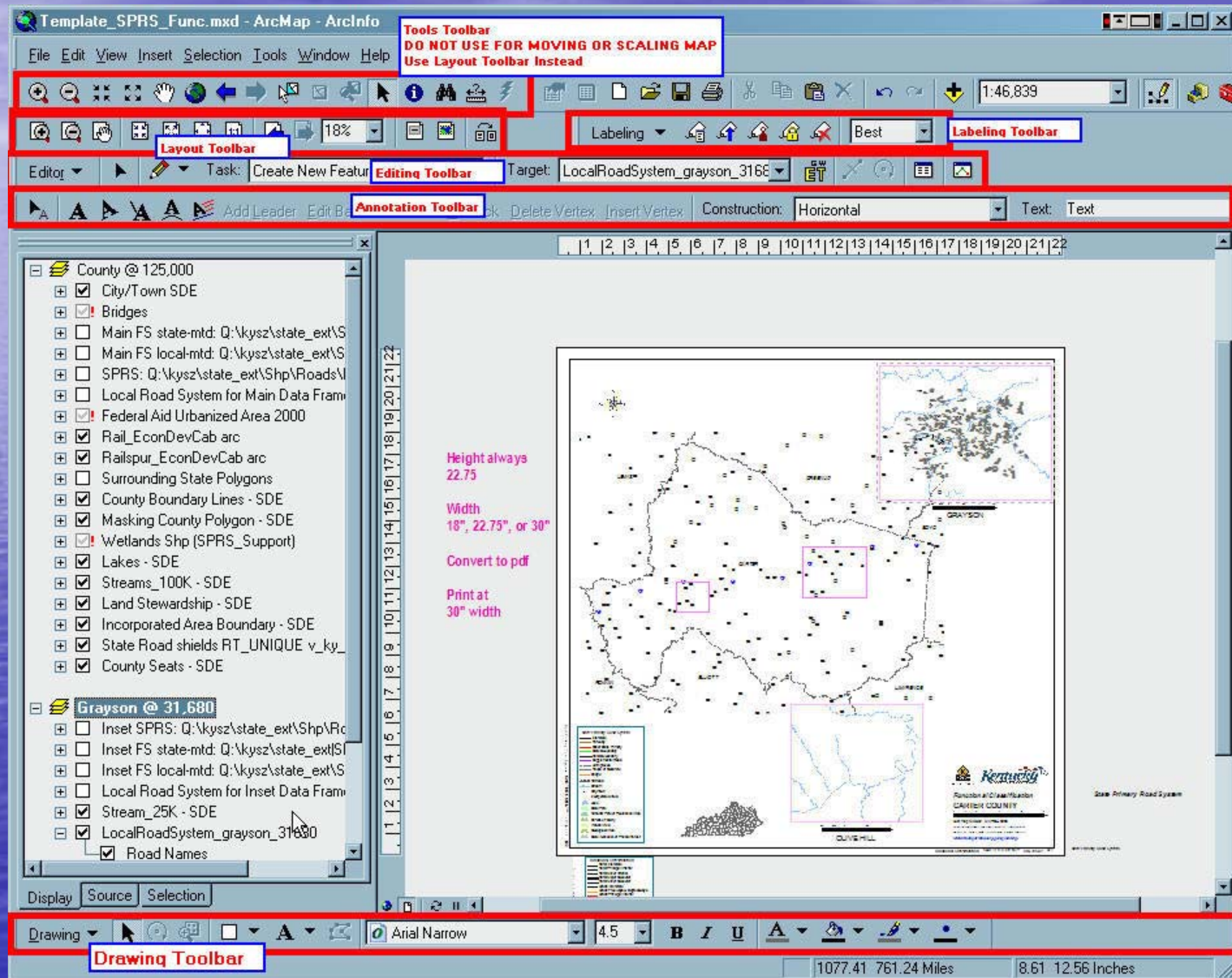
Statewide Transportation Planning

Contact Us

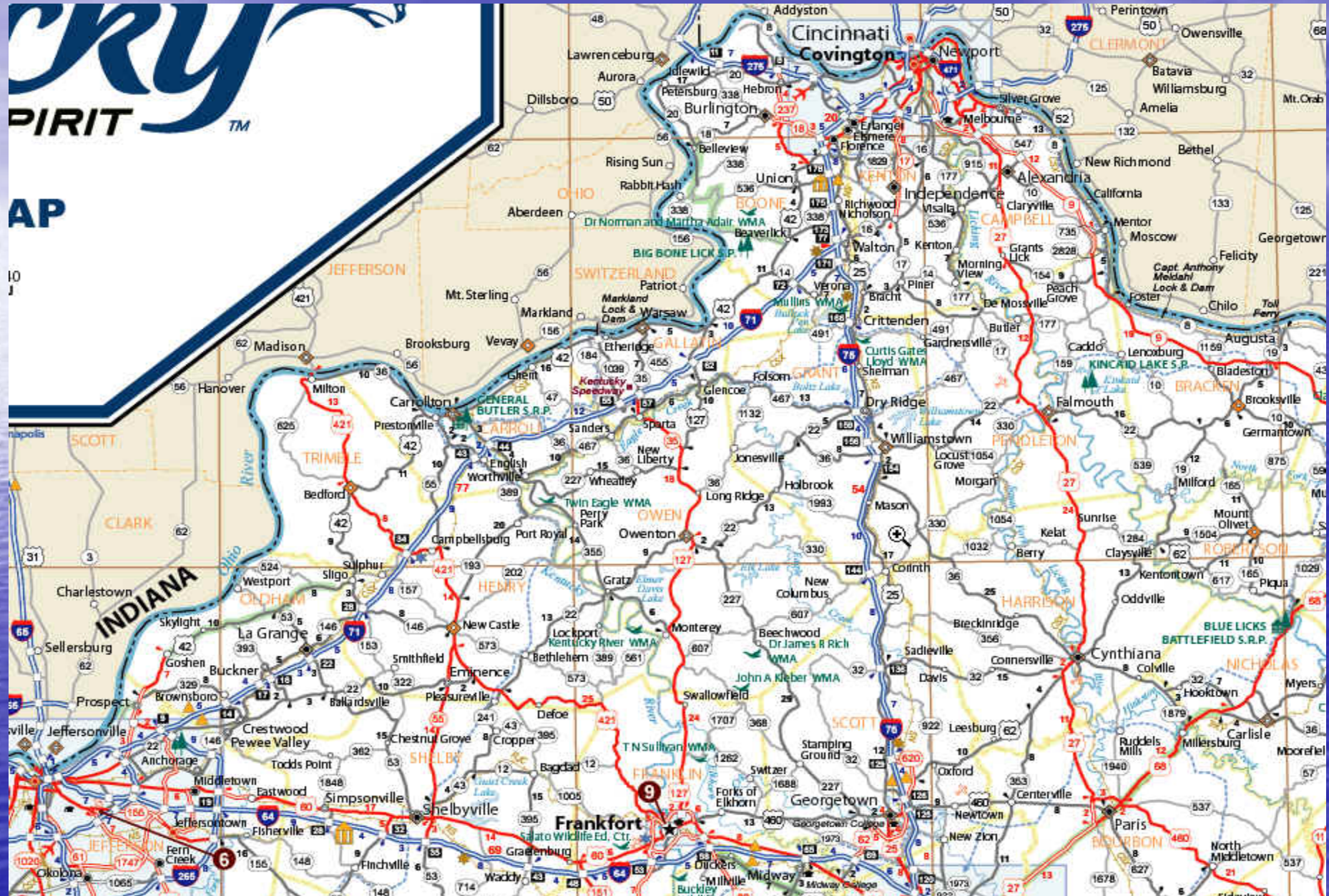
[For an HTML version of the maps page please click here.](#)

[For the latest version of Flash Player please click here.](#)

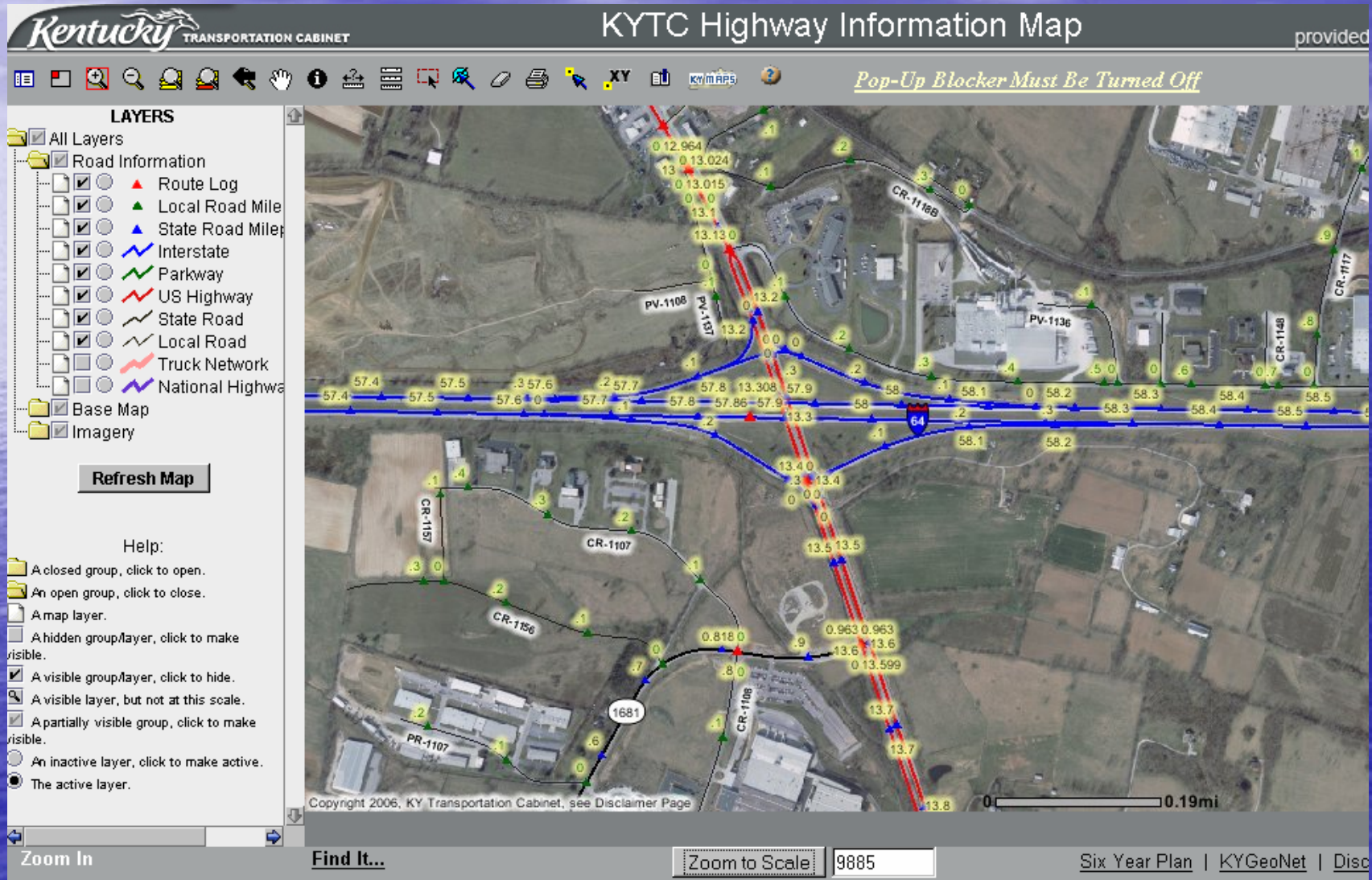
# ArcMap



# Kentucky Official State Highway Map



<http://kytcgis.ky.gov/his/>

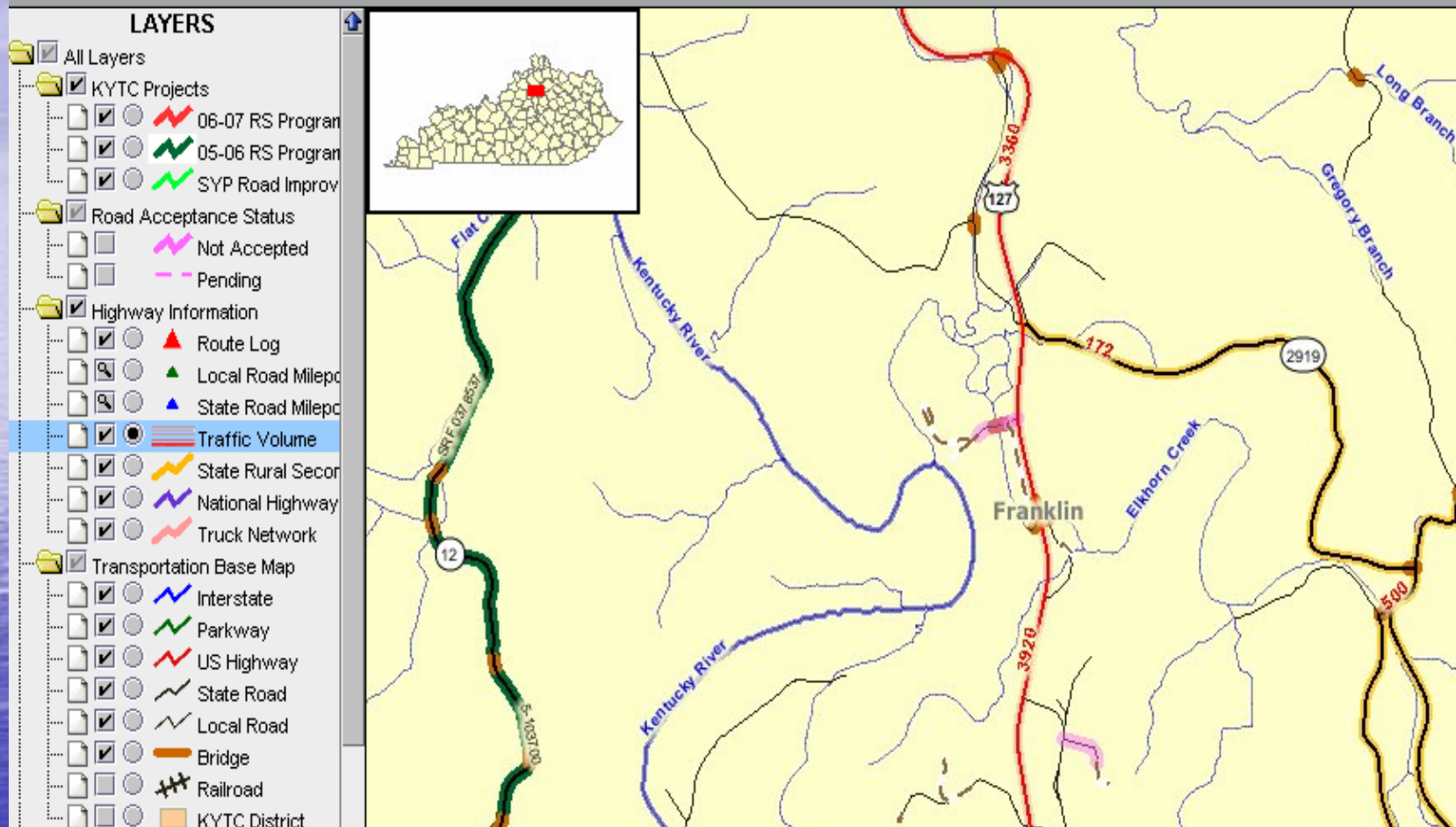


# Rural & Secondary Roads:

<http://kytcgis.ky.gov/RaSR/>

## Select where you want to zoom...

Boundaries	Routes And Roads	Districts...
City: <input type="text"/>	<u>Route</u>	<u>KYTC:</u>
County: <input type="text"/>	1. County: <input type="text"/>	Highway Districts: <input type="text"/>
USGS Quad: <input type="text"/>	2. Route Prefix: <input type="text"/>	Enter a KYTC Project Number: <input type="text"/> <input type="button" value="Zoom to Project"/> Examples: 3-275.01 or 10-270.30
	3. Enter Route Number: <input type="text"/>	
	4. Milepoint: <input type="text"/> . <input type="text"/>	
Enter a FIVE digit Zip Code:	<input type="button" value="Zoom to Route"/>	<u>Legislative:</u>
<input type="text"/> <input type="button" value="Zoom to Zip"/>	<u>Road/Street Name</u>	US House: <input type="text"/>
Road Status Report (by County): <input type="text"/>	1. County: <input type="text"/> 2. Direction (N,S,E,W): <input type="text"/> 3. Enter Primary Name: <input type="text"/> 4. Type (Drive, Lane, Ave): <input type="text"/> 5. Post Direction (NE, SW): <input type="text"/> <input type="button" value="Zoom to Road"/>	KY Senate: <input type="text"/>  KY House: <input type="text"/>



- Traffic counts
- County roads accepted or not
- 6-year plan projects with item numbers

# System Data

- State Primary Road System
- Functional Classification
  - National Highway System
  - STRAHNET
- National Network
- Coal Haul Network



# State Primary Road System

- KRS 177.020
- State ownership and maintenance
- Approximately 27,000 miles total
- Minimum 11,800 RS miles
- Maps and listings on web page
- Attempt to reduce state-maintained mileage but locals must pass resolution accepting
- Jurisdictional transfers report on web page

# State Primary Road System Classes

The State Primary Road System is an administrative system used to track roads within the state that are maintained by the Kentucky Transportation Cabinet. Roads, streets and/or highways are classified by the type of service and function the facility provides, as follows:

- **State Primary Routes:** Interstates (symbolized by black lines on the maps), parkways (symbolized by brown lines on the maps) and other long-distance, high-volume intrastate routes (symbolized by red lines on the maps) that are of statewide significance. These routes generally link major urban areas with the state.
- **State Secondary Routes:** Shorter distance routes of regional significance with both access to land use activity and mobility as their functions. These routes generally serve smaller cities and county seats within a region. Symbolized by green lines on the maps.
- **Rural Secondary Routes:** Routes of subregional significance with access to land use activity (such as farm-to-market routes) as their prime function or urban arterial streets or other collectors. Symbolized by yellow lines on the maps.
- **Supplemental Roads:** Routes that are state-maintained for various reasons but are not included in the higher classifications. They are generally short-distance routes such as frontage roads, cross roads or local access roads. Symbolized by purple lines on the maps.

# Functional Classification

- FHWA guidelines on web page
- 23 CFR 470.105, 23 CFR 470.107
- On all state and local maintained roads
- Divided between urban and rural classes
- Generally similar to SPRS class

# Functional Classes

- Rural Principal Arterial (Rural Interstates, Rural PA)
- Rural Minor Arterial
- Rural Collector Road (Rural Major Collector, Rural Minor Collector)
- Rural Local Road
- Urban Principal Arterial (Urban Interstates, Urban Freeways and Expressways)
- Urban Minor Arterial
- Urban Collector Street
- Urban Local Street

Descriptions of functional classifications can be found at  
[http://www.planning.kytc.ky.gov/maps/SFCS/func\\_maps.asp](http://www.planning.kytc.ky.gov/maps/SFCS/func_maps.asp)

# Other FHWA reporting classes

- National Highway System
  - Interstates & other significant principal arterials
  - Serve major travel needs
  - Meet national defense requirements
  - Interstate and interregional travel
- Strategic Highway Network (STRAHNET)
  - DOD's public highway needs

# Official Orders

- Legal acceptance of roadway into State System (KRS 177.020, 603 KAR 3:030)
- Designate route numbers and systems

# District Spreadsheets

- Fill in **Remarks**, if an **Official Order** is needed, **Open to Traffic Date**, **Priority**, and **Type of Change** columns of District Spreadsheet before sending back to Central Office for updates

COUNTY	DT	DUE	ROUTES	ITEM #	PROJ. TYPE	INT.	REMARKS	CENTRAL OFFIC			DIST	DIST	TYPE			
Green - Other Sources												BANK	CH			
Blue - Current 6 yr Projects Awarded											O.O.	1st	2nd	OPEN	H=HI	1=ALIGN
Red - Completed Projects 1/06 - 1/07												OO	OO	TRAFF	M=ME	2=HIS
DT - GPS Maintenance Due Date															L=LO	3=BOTH
INT - Staff Project Assigned														MM/YY	N/A	4=NONE
															5=OTHER	
Adair	8	30-Jul	KY 61	8-159.00	Bypass		Per D-8 comp end 08, several roads to county	Yes				12/08	L		3	
Adair	8	30-Jul	KY 61	8-162.61	Reconst.	JW	Signed resolution city & county	Yes	Yes			Open	H		3	
Casey	8	30-Jan	KY 70	8-142.00	New Align		Added per Josh	Yes				8/09	L		3	
Cumberland	8	30-Oct	KY 3115	8-1030.00	Br. Replace		Per D-8 trans r/w on Garmon to Co, done by D-3	Yes				Open	H		5	
Cumberland	8	30-Oct	KY 61	8-158.20	Relocation		Per D-8 Design-build	Yes				06/10	L		3	
Cumberland	8	30-Oct	KY 90	8-136.00	Spot Imp		Per D-8 Design-build	Yes				06/10	L		3	
Pulaski	8	30-Nov	KY 1247	8-270.00	New Align		Per D-8 comp possibly late 08, 4 lanes	Yes				12/08	L		3	
Pulaski	8	30-Nov	KY 90	8-1009.01	New Align	KB	New bridge and new align, Crystal done OO	Yes	Yes			Open	N/A		3	
Pulaski	8	30-Nov	KY 914	8-259.50	New Route		Per D-8 Ground not broke	Yes				04/09	L		3	
Pulaski	8	30-Nov	KY1247&1577	8-300.00	New rt, widen		Per D-8 OO info submitted 3/5/06	Yes	Done			Open	H		3	
Pulaski	8	30-Nov	KY914/KY1642	8-259.10	New Route		Per D-8 Open	Yes				Open	H		3	
Pulaski	8	30-Nov	US 27	8-55.02	Major Widen	R/W	Per D-8 comp 8/07, traffic tentative, need agree	Yes				Open	H		3	
Pulaski	8	30-Nov	US 27	8-55.03	Major Widen	R/W	Per D-8 let 11/06, summer 08, need agree	Yes				Partial	L		3	
Pulaski	8	30-Nov	US 27	8-55.04	Major Widen		Per D-8 comp possibly fall 08 spring 09	Yes				10/08	L		3	
Pulaski	8	30-Nov	US27/KY90	8-270.10	Interchange		Per D-8 comp possibly late 08, need agree	Yes				12/08	L		3	
Rockcastle	8	30-Aug	CR 1090	8-1032.00	Br. Replace		Per D-8 need to give r/w to county, comp 08	Yes				05/08	M		3	
Russell	8	30-Aug	KY 3280	8-116.00	Reconst.		Per D-8 let 7/07, r/w & roads to county	Yes				12/08	L		3	
Russell	8	30-Aug	US 127	8-54.01	New Route	KD	Per D-8 OO info submitted to CO	Yes	Yes			Open	H		5	

# Requirements for O.O. preparation

- KRS 177.020(4) requires meeting with locals on bypassed segments before advertisement for bids
- Letter of offering bypassed roadbeds to local government and resolution accepting
- Recommendation for new systems
- Electronic plans in ProjectWise
- Plan Sheets that have been highlighted by the District that shows the Right-of-Way and old roadbed that is to be given away
- Questions answered by District about all affected roadbed
- Send information prior to construction
- Notify Planning as soon as traffic is on the road

# Official Order Tracker

**Main Menu**

**ALL O.O. REQUESTS (REGARDLESS OF STATUS)**

EDIT  
By Person or  
Click "OK" for All

DISPLAY OR  
PRINT  
By Person or  
Click "OK" for All

**COMPLETED O.O.s**

EDIT  
By Person or  
Click "OK" for All

DISPLAY OR  
PRINT  
By Person or  
Click "OK" for All

**O.O.s WAITING TO BE PROCESSED**

EDIT  
By Person or  
Click "OK" for All

DISPLAY OR  
PRINT  
By Person or  
Click "OK" for All

**O.O.s READY TO PROCESS**

EDIT  
By Person or  
Click "OK" for All

DISPLAY OR  
PRINT  
By Person or  
Click "OK" for All

**PROJECTS AWAITING RESURFACING**

EDIT  
By Person or  
Click "OK" for All

DISPLAY OR  
PRINT  
By Person or  
Click "OK" for All

**FUTURE CONSTRUCTION PROJECTS**

EDIT  
By Person or  
Click "OK" for All

DISPLAY OR  
PRINT  
By Person or  
Click "OK" for All

**ALL OTHER O.O.s ON HOLD**

EDIT  
By Person or  
Click "OK" for All

DISPLAY OR  
PRINT  
By Person or  
Click "OK" for All

**PROJECTS AWAITING RIGHT-OF-WAY INFORMATION**

EDIT  
By Person or  
Click "OK" for All

DISPLAY OR  
PRINT  
By Person or  
Click "OK" for All

**Status Types:**

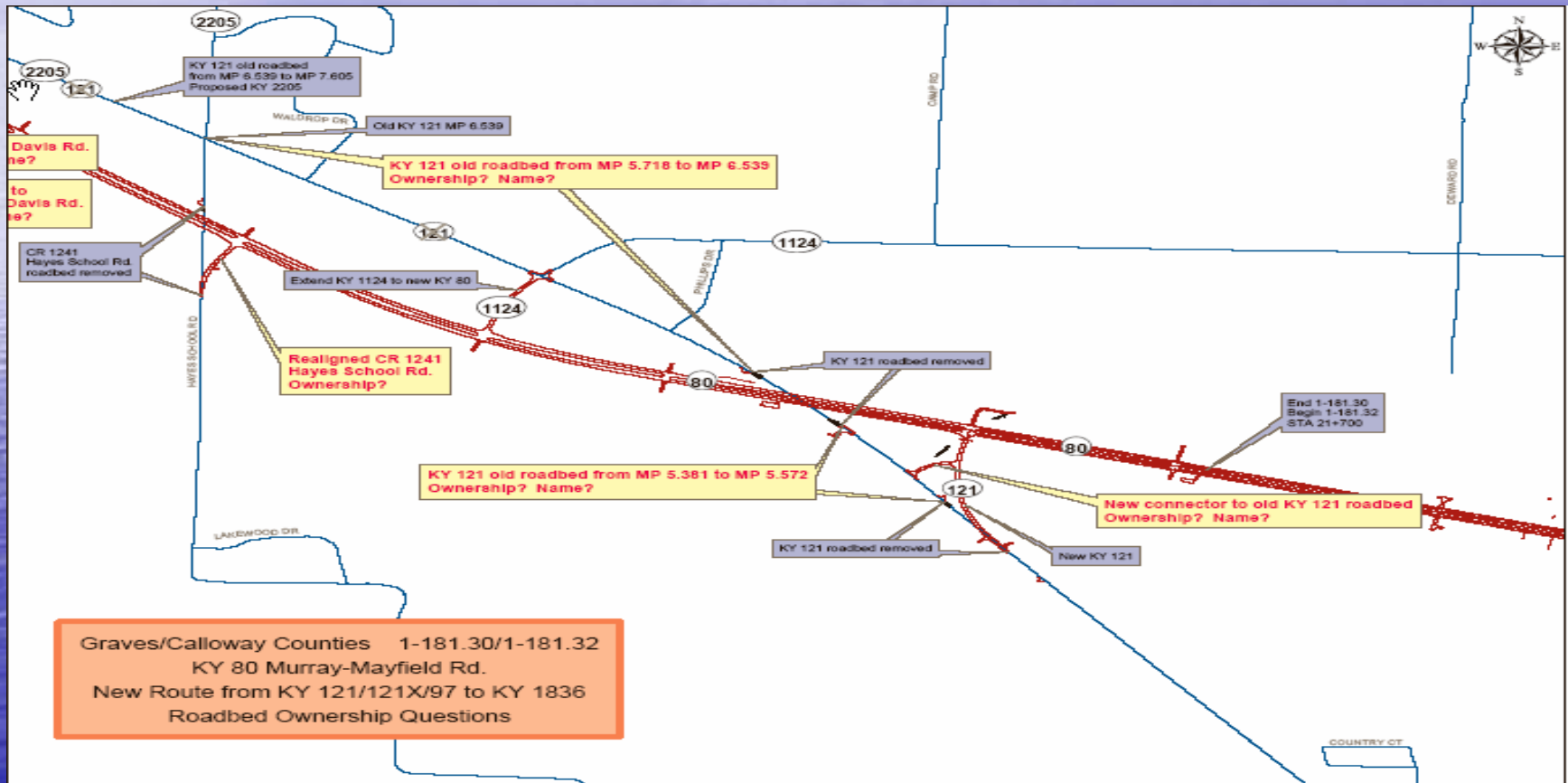
- Pending: Need something to be able to complete work (plans, resolution, etc.)
- Ready: Everything available to complete
- Hold: No imminent action, low expectation of possibility of completion
- Resurface: Resurfacing to be done before return to local authority
- Future: Notification received but road will not be open in the near future
- Complete: Signed by Secretary and distributed

**ELECTRONIC OFFICIAL ORDERS**

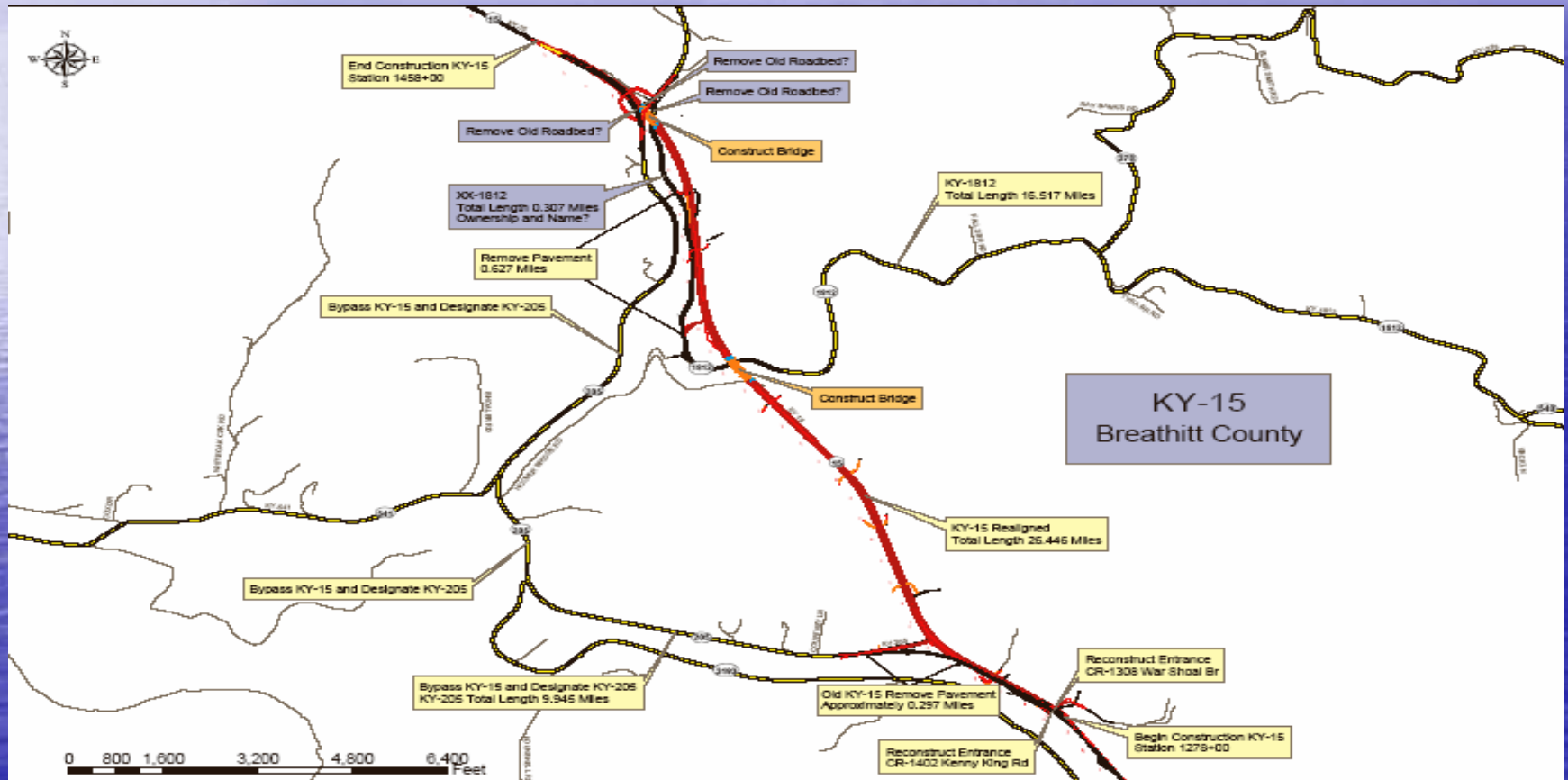
EDIT ALL

DISPLAY OR PRINT ALL

# Affected Roadbed Question Map



# Another Affected Roadbed Question Map



# XX-Routes

- Any bypassed roadbed or newly constructed roadbed, built by KYTC and that do not logically belong in the state system and are temporarily maintained by KYTC until ownership is resolved
- XX Routes display on all interactive mapping as Supplemental/Local until a decision is made and documentation (O.O.) has been processed to transfer ownership

# National Truck Network (NN)

- Over-dimensional trucks (STAA)
- Designated once by report to FHWA
- Additions classified as state network
- 1 to 15 mile access to terminal or food, fuel or rest depending on road types

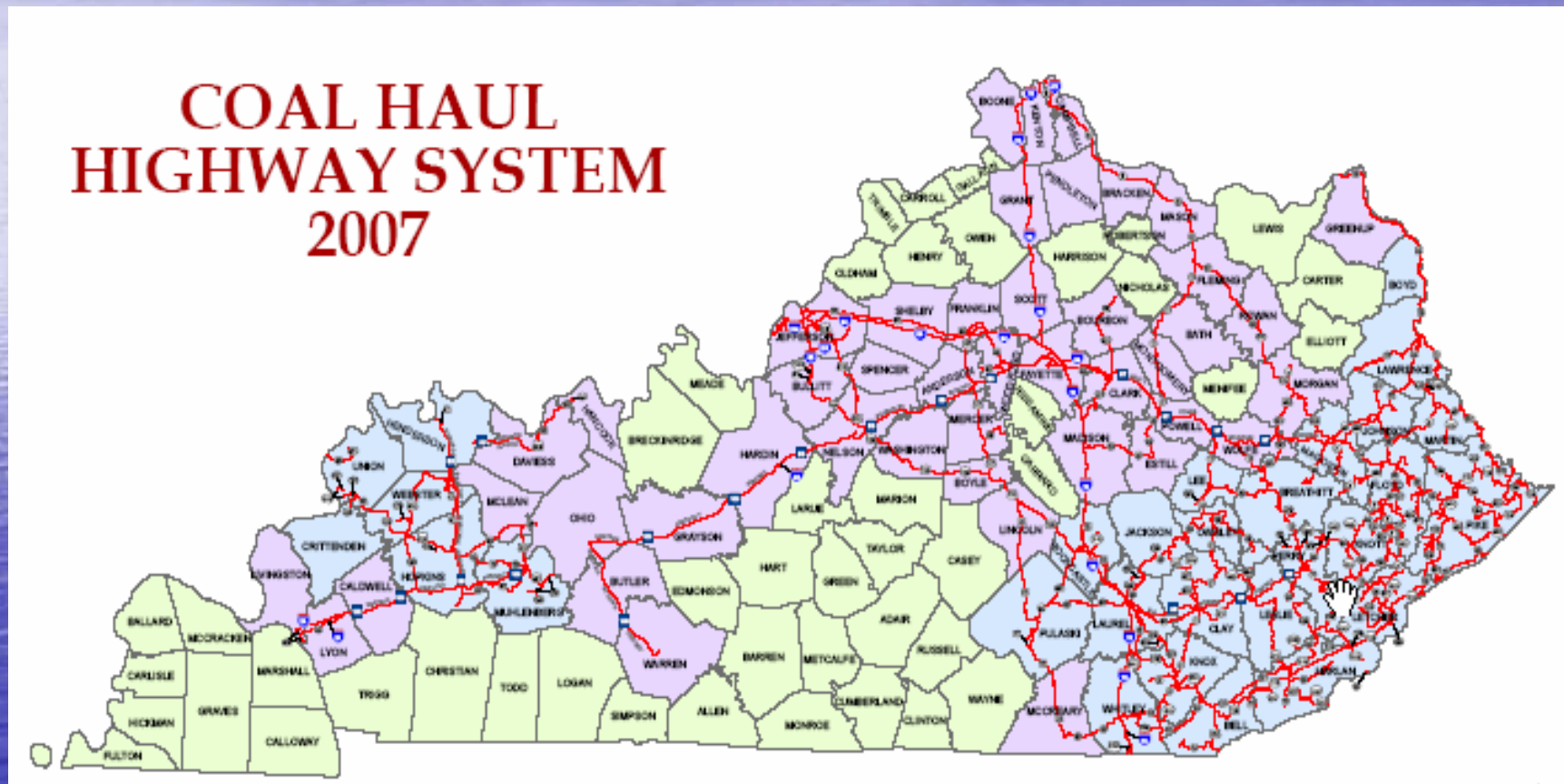
# Coal Haul Network

- Compile data annually as reported by truckers
- Annual update of HIS
- Data supplied to Maintenance for review of bridges and used for designation of Extended Weight System

For more Coal Haul information go to

<http://www.planning.kytc.ky.gov/maps/coalhaul/coalhaul.asp>

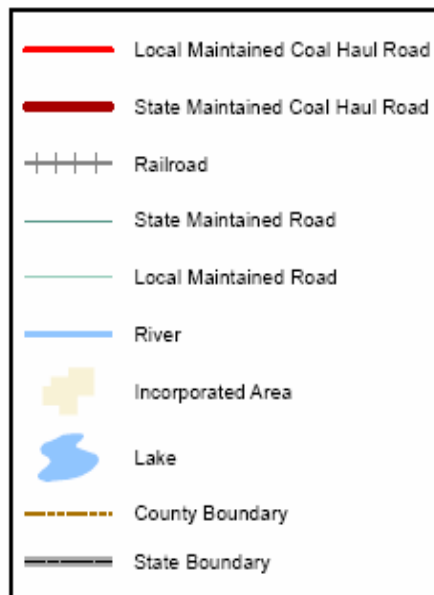
# State Coal Haul Map



# County Coal Haul Maps

2007 Coal Haul Highway System

FLOYD COUNTY



0 1 2 4 6 Miles

KNOTT

Wheelwright

PIKE

# Questions???

