

MPO Boulevard

#What the heck is a MPO?



#Why do you care?



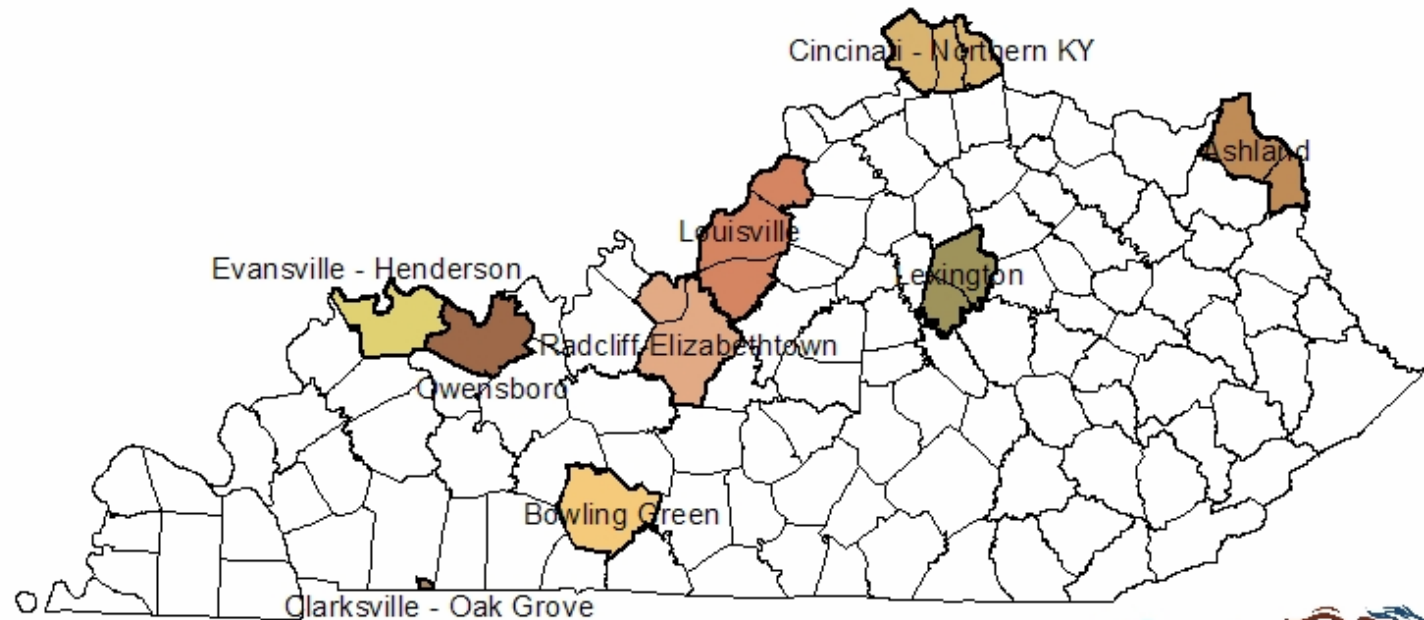
What the heck is a MPO?

Metropolitan Planning Organization

- # Federally Mandated since 1962 Highway Act**
 - # Transportation planning process for urbanized areas over 50,000 (Census determined)**
-

MPO Planning

MPO Planning Boundaries



REVISED AUGUST 2005

Kentucky
UNBRIDLED SPIRIT

KY's 9 MPO areas and their Agencies

- # Owensboro- GRADD
- # Ashland- FIVCO
- # Clarksville/Ft.Campbell/Oak Grove- CMCRPC
- # Bowling Green- BRADD
- # Radcliff/Elizabethtown- LTADD
- # Louisville- KIPDA
- # Lexington- Lexington Area MPO
- # Cincinnati/Northern Kentucky- OKI
- # Henderson- Evansville MPO

**THE
BIG
FOUR**



What is the function/role of a MPO?

Transportation planning through the 3 C process

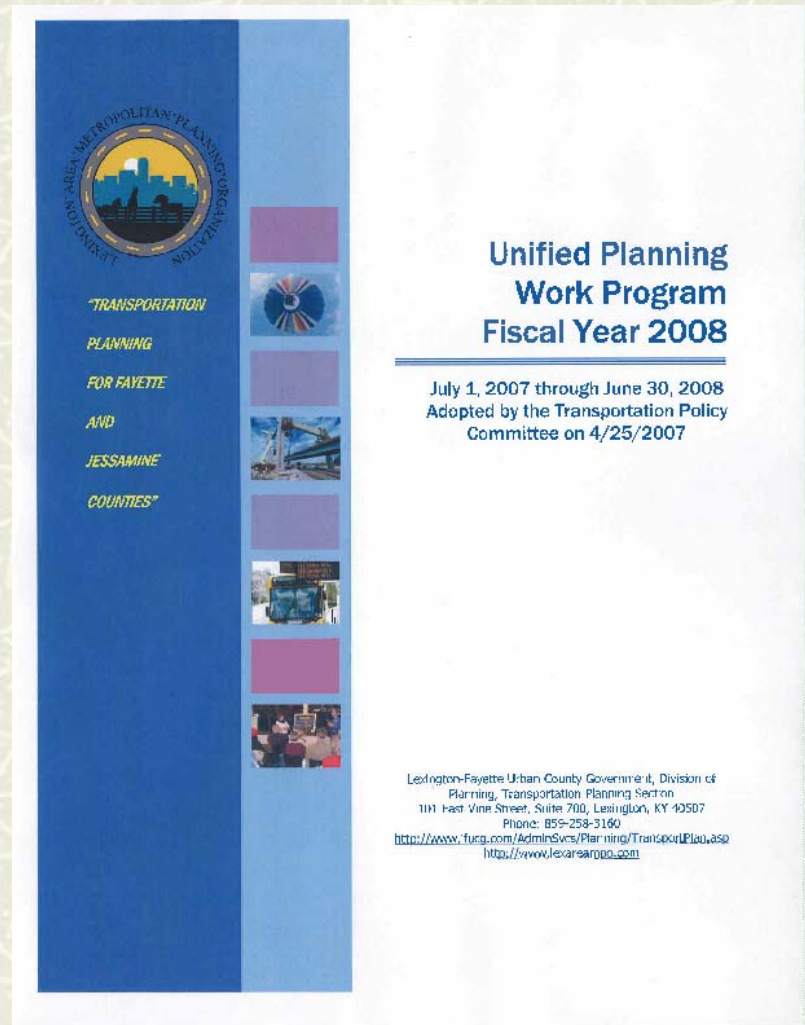
- # Continuing
- # Comprehensive
- # Cooperative

How?



1. Unified Planning Work Program(UPWP)

- # Annual program document
- # Programs planning work to be done by/through MPO staff
- # Federal, state, and local funds (federal PL with 80/5/15 match)



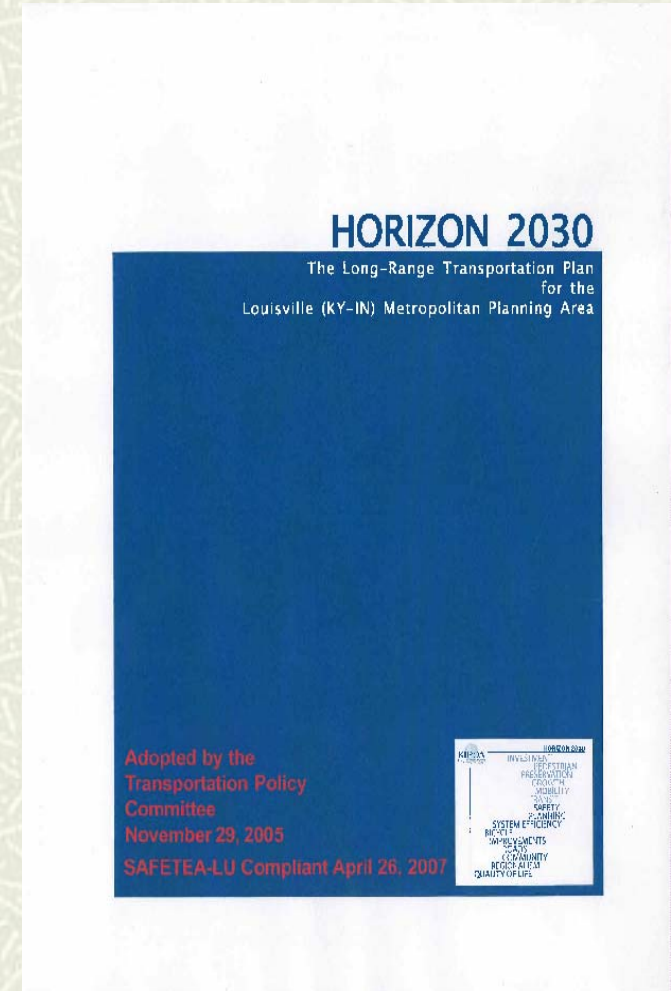
2. Long Range Transportation Plan

Prioritize list of MPO area projects for 20+ years

LRTP or “Plan” considers:

- **Technical analysis and data**
- **Project Id. Forms (PIFs)**
- **Public/stakeholder input**
- **Fiscal constraint**
- **Air quality issues (if required)**
- **Multimodal needs – ped, transit, roads, bike, freight**

Updated every 4-5 years



3. Transportation Improvement Program (TIP)

The TIP:

- # Describes 4+ years of projects in MPO area
- # Must include federally funded projects including transit
- # Consistent with 20+ year Long Range Plan
- # Not the Six Year Plan but should be similar
- # Adopted into the Statewide TIP (STIP)
- # Updated every 1-4 years



2007 – 2012

TRANSPORTATION IMPROVEMENT PROGRAM

July 2007

177 GRAHAM AVENUE
PO BOX 90005
BOWLING GREEN, KY 42102-9005
PHONE: (270) 784-2381
FAX: (270) 842-0768
www.bradc.org/mpo

The 3 “C” MPO Process Includes:

#MPO Committees

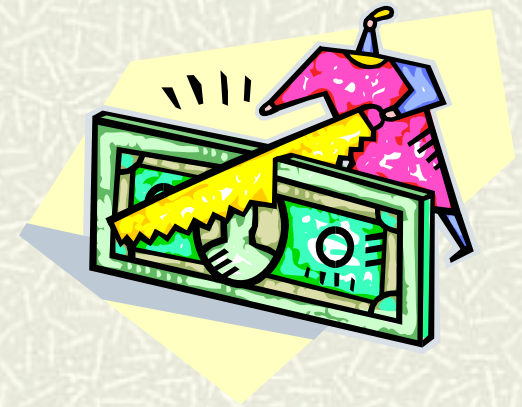
- Policy
- Technical
- Others – Bike/Ped, Citizens, Air Quality, etc,

(3 C's = continuing, comprehensive, cooperative)



Funding for Metropolitan Planning

- # Federal Highway formula funds known as **PL**
- # For Planning purposes **ONLY**
- # In KY (2008): \$2 M for 9 MPOs
 - Louisville - \$945k
 - Clarksville - \$27k
 - Distributed primarily by population



Funding for Projects in “the Big Four”

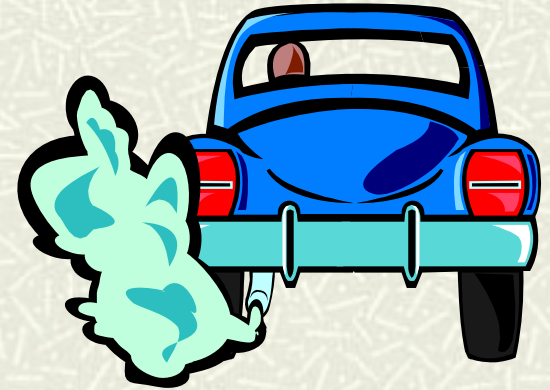
- # **Transportation Management Areas**
 - MPOs with population > 200,000
- # **Dedicated STP funds for TMAs In KY (2007):**
 - Louisville (SLO) - \$12.4M
 - N. KY (SNK) - \$4.7M
 - Lexington (SLX) - \$4.2M
 - Henderson (SHN) - \$446k
 - 80/20 federal/local match
- TMAs have **FINAL Approval** on how/when/why/where funds are spent



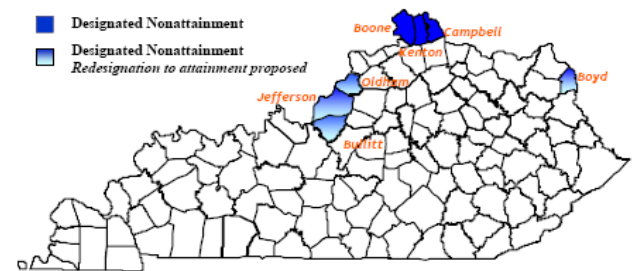
A Major Issue for some MPOs – Air Quality Conformity

■ What is Conformity?

- Analysis to ensure planned projects/plans comply with KY's A.Q. Plan (SIP)
- Usually requires models – traffic and A.Q.
- Projects/plans can't worsen air quality
- Done by MPO or KYTC
- Analysis may take months



8-Hour Ozone Nonattainment Areas
Existing Standard set at .08
(attainment up to .084 ppm)



Why do you care about MPOs?

1. MPO's Plan and TIP documents must have **all** federally funded and regionally significant projects – it's federal law!
2. MPOs involve the public and local officials
3. MPOs decide how dedicated STP funds are used (SLO, SLX, SNK, SHN)
4. MPO process must be followed to make changes - may take **4 months!!!** (air quality, public involvement)



KYTC MPO Team Role

(in addition to finding the ugliest clipart possible)

- # Ensure compliance with federal law
- # Consistency and coordination
- # Ensure project development and implementation



Quiz Time

UPWP?

What is the MPO agency for Ashland?

MPOs = greater than _____ population.

Plan updated every _____ years

T or F : TIP = SYP

T or F : SNK = abbreviation for snack

T or F : transportation planning is the reason for living
