



I NEED A ROAD!!!

How do we make that happen?

Eventually

Hopefully

Maybe??

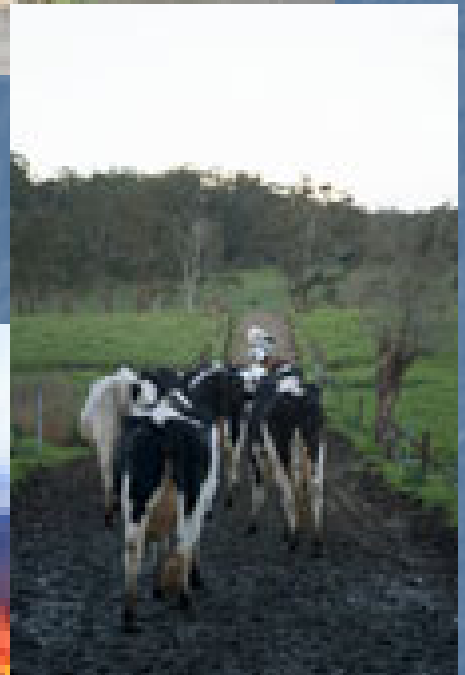
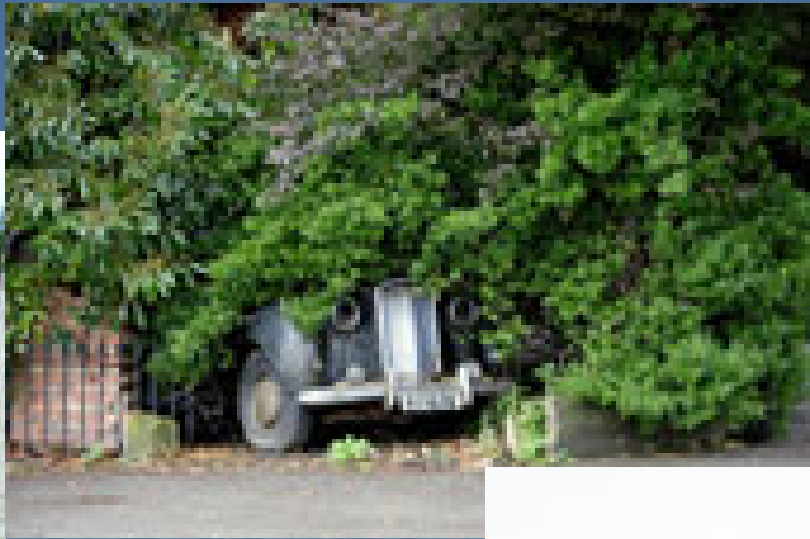


EXIT 223

74

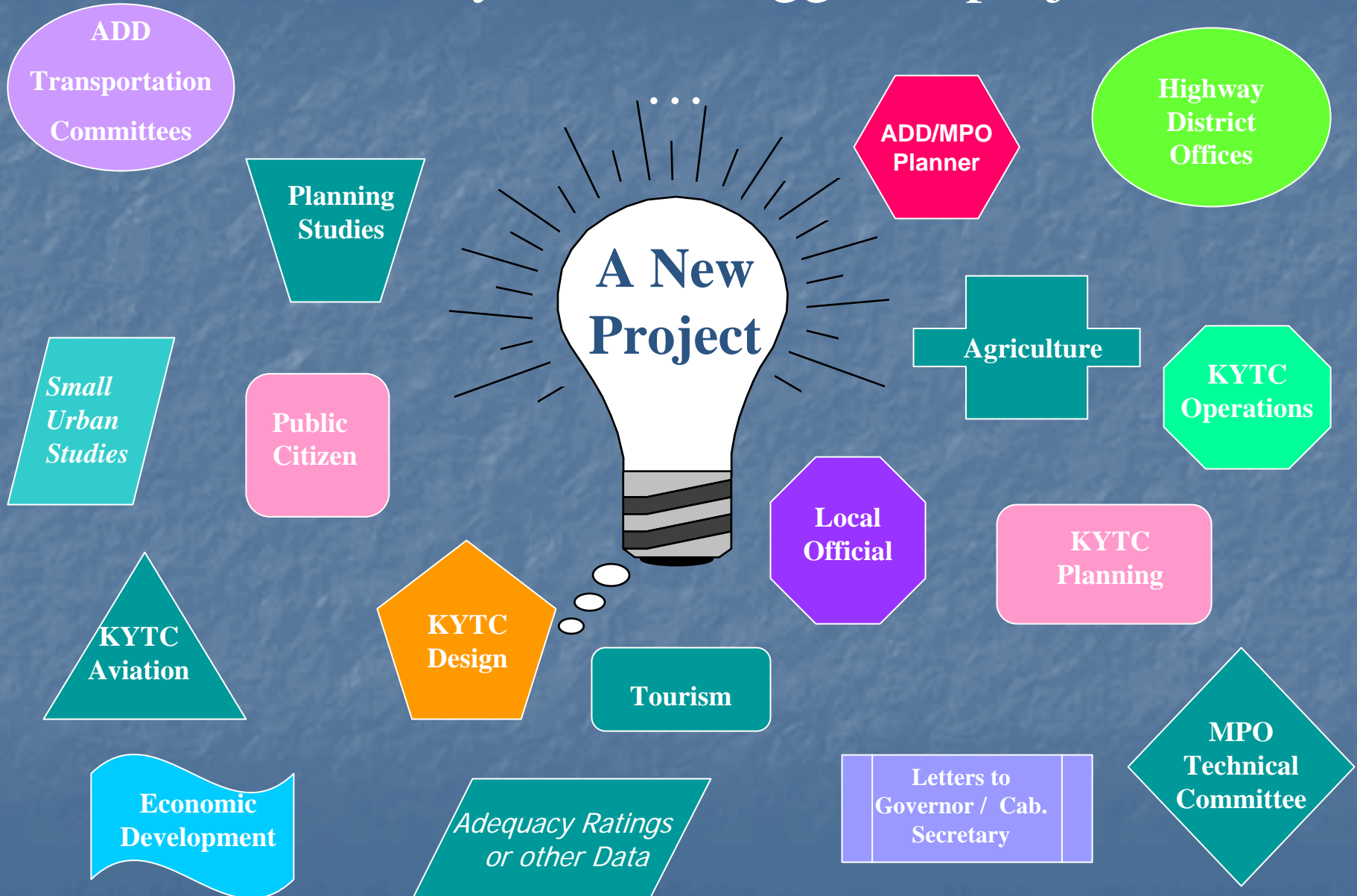


Carefree Hwy



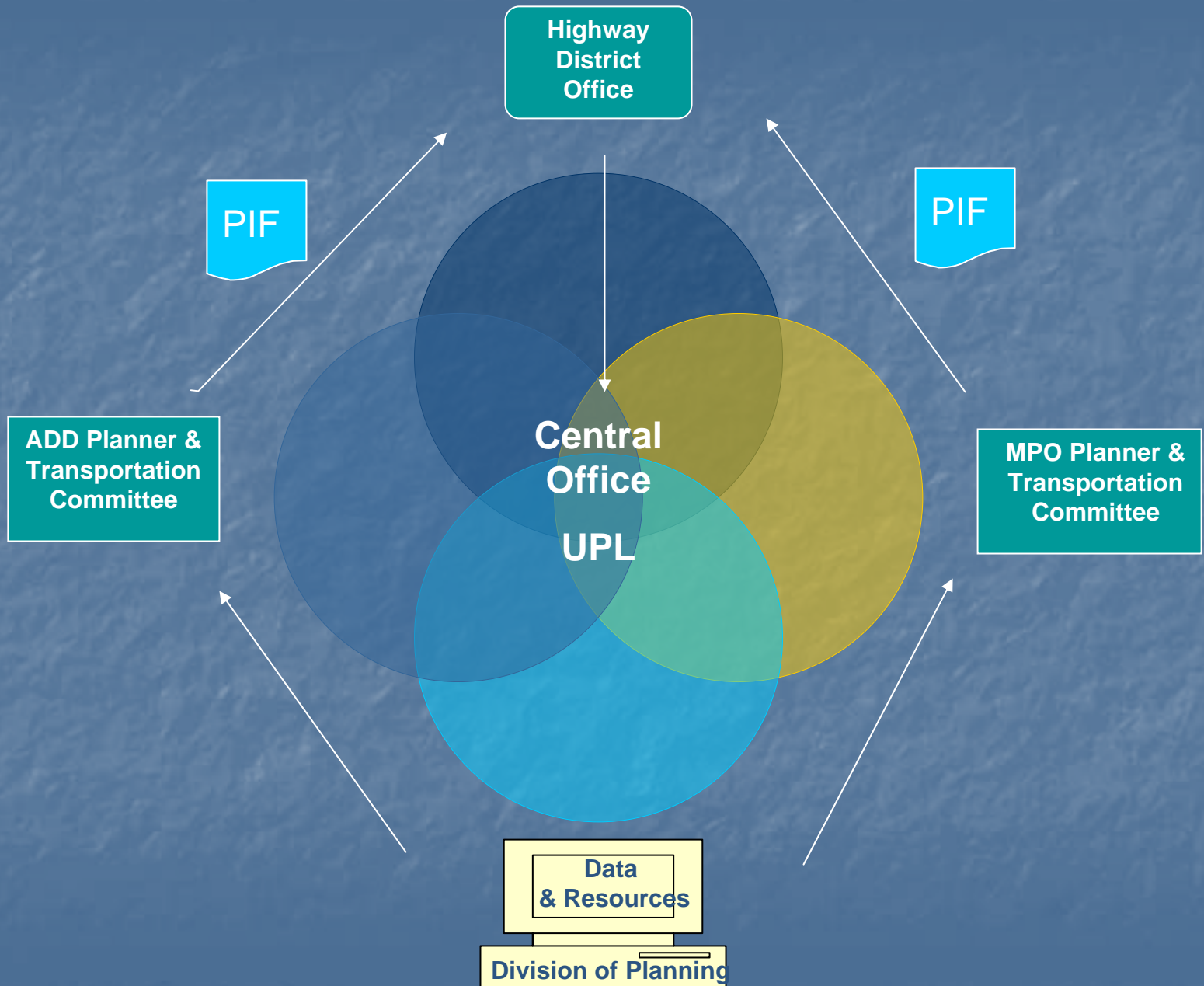


Almost anyone can suggest a project



How a project gets started....

- Need is provided to ADD, MPO, Highway District Office or Central office
- Data is documented on a Project Identification Form (PIF)
 - Data:
 - HIS data -traffic counts, truck percentages, geometrics
 - Milepoints from Route Log
 - Adequacy Ratings
 - Problem Statement
 - Photos/Map
 - Cost Estimates



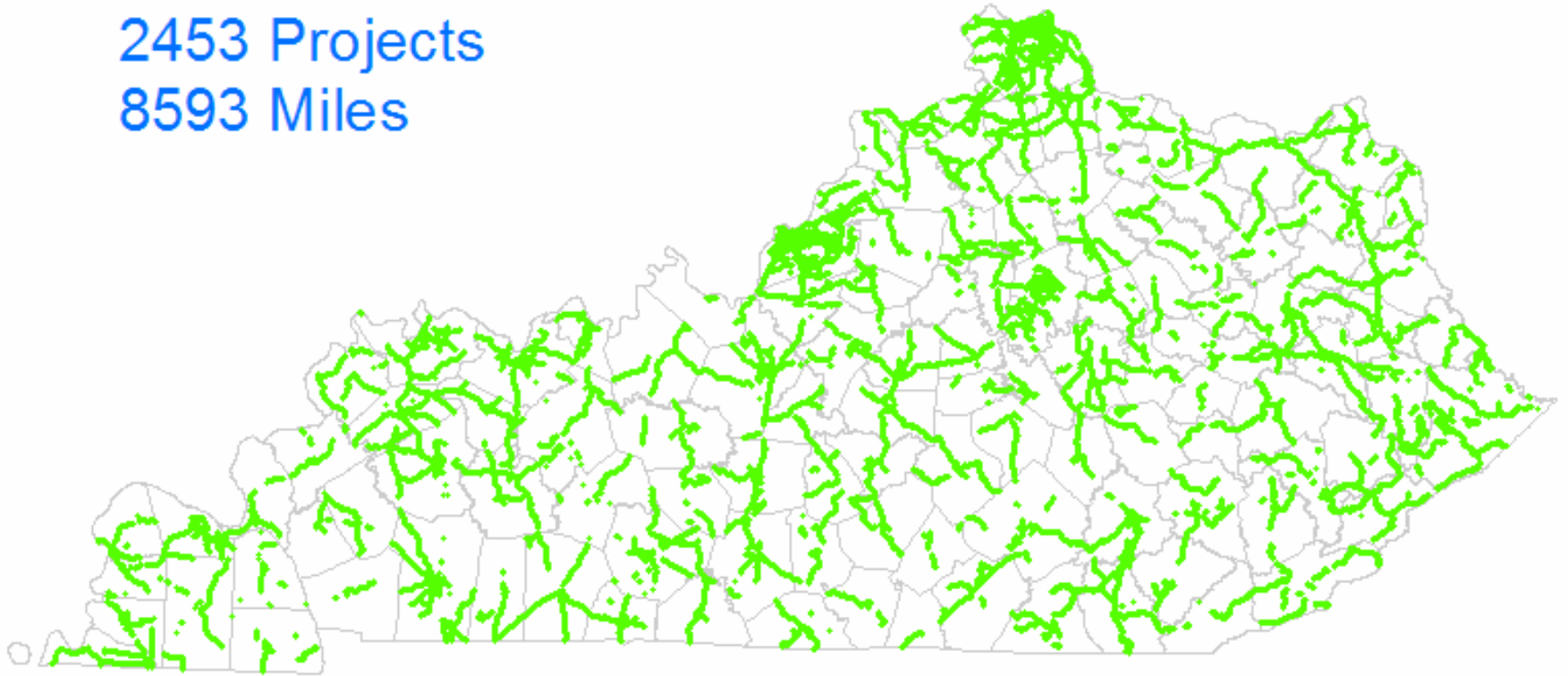
How projects are considered....

- All proposed projects are entered into the UPL Database (some exceptions)
- All unscheduled projects are evaluated, prioritized & ranked every 2 years by:
 - Local Public Officials
 - ADD/MPO Transportation Committees
 - Highway District Offices
 - Central Office

Unscheduled Project List

2453 Projects

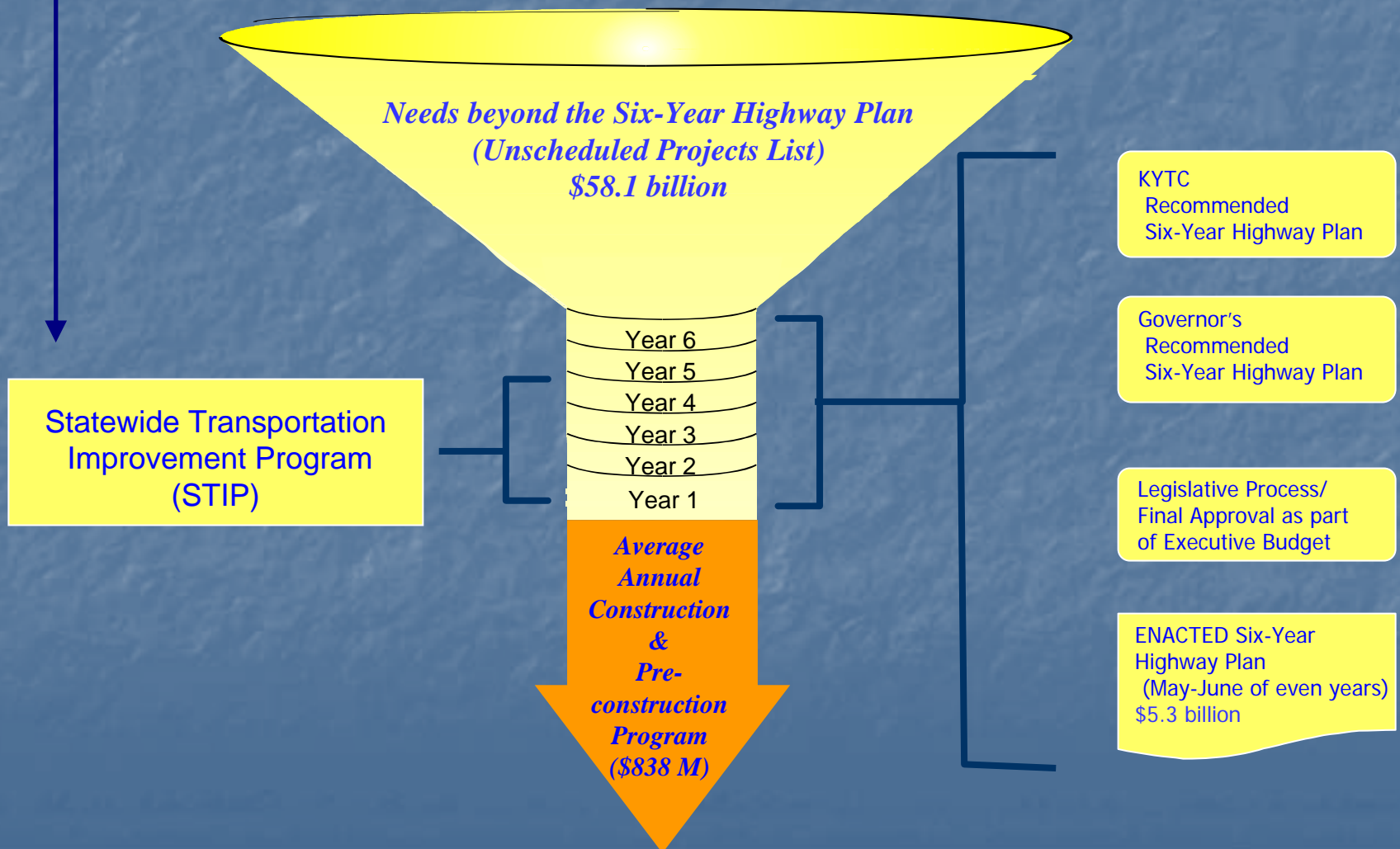
8593 Miles



KYTC Considerations for the Recommended 6YP

- Cabinet Goals
- Long-Range Plan Goals
- Fiscal Constraints
- Priorities and Top Ten Projects (Local Officials, ADDs, MPOs, Hwy Districts)
- Planning study recommendations
- System Analyses
- Connectivity/parallel routes
- Intermodal or economic development access
- Freight Movement
- Geographic Distribution
- Political reality

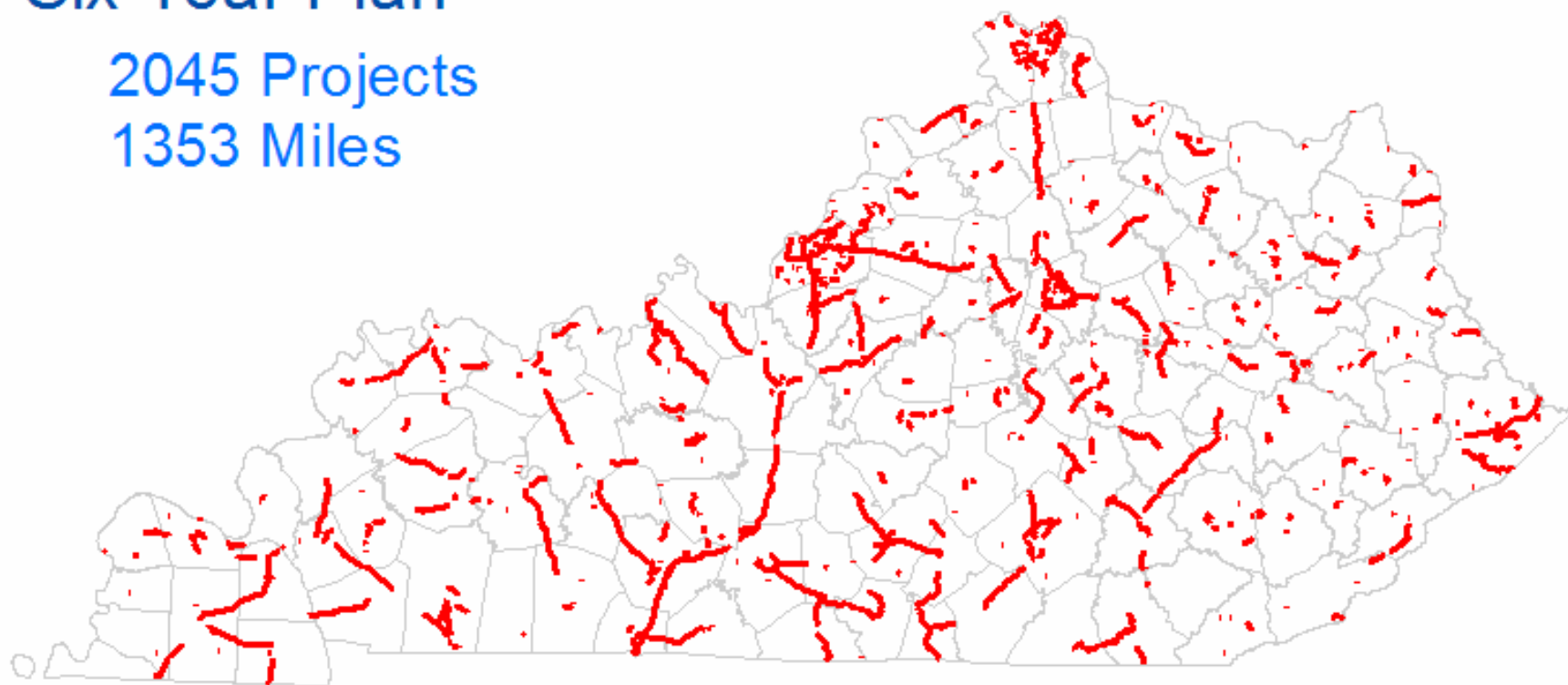
\$63.4 Billion in Unscheduled Projects



Six Year Plan

2045 Projects

1353 Miles



Six-Year Highway Plan (6YP) or *The Highway Plan*

- Kentucky (state) legislative requirement
- Six years of projects identified by phase and cost
- Approved every two years in even years by legislature
- Does not include projects from “other” modes
- Subset of 6YP is the STIP – must be fiscally constrained and is required in order to get Federal funding approval

Long-Range Statewide Transportation Plan (STP)

- Federal requirement (ISTEA / TEA-21 / SAFETEA-LU)
- Minimum of 20 year horizon
- Updated as needed (four-six year cycle)
- Includes all modes (rail, water, transit, air,...)
- STP can be a policy/project plan or policy only plan

Long-Range Statewide Transportation Plan

KENTUCKY

LONG-RANGE STATEWIDE TRANSPORTATION PLAN 2006

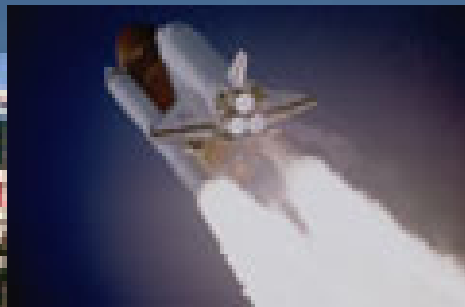
"TO PROVIDE A SAFE, SECURE, AND RELIABLE HIGHWAY SYSTEM
THAT ENSURES THE EFFICIENT MOBILITY OF PEOPLE AND GOODS,
THEREBY ENHANCING BOTH THE QUALITY OF LIFE AND THE ECONOMIC VITALITY OF
THE COMMONWEALTH."

ERNIE FLETCHER
GOVERNOR
COMMONWEALTH OF KENTUCKY

Kentucky
UNBRIDLED SPIRIT™

BILL NIGHBERT
SECRETARY
KENTUCKY TRANSPORTATION CABINET





shutterstock - 73811

