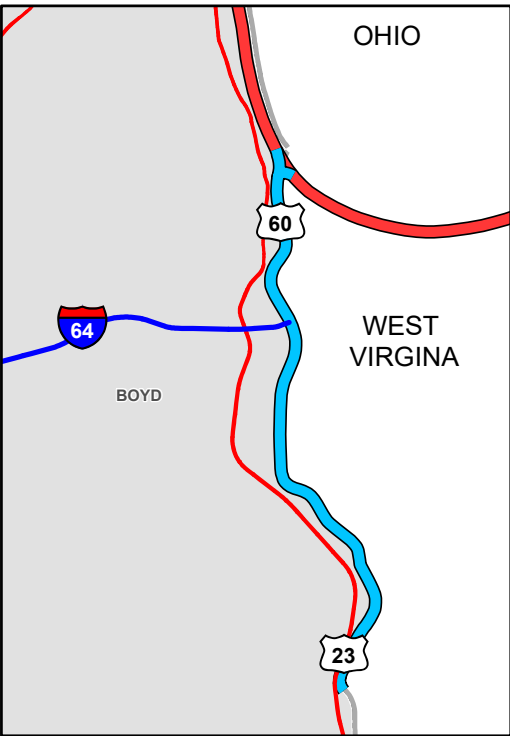


US MARINE HIGHWAYS IN KENTUCKY

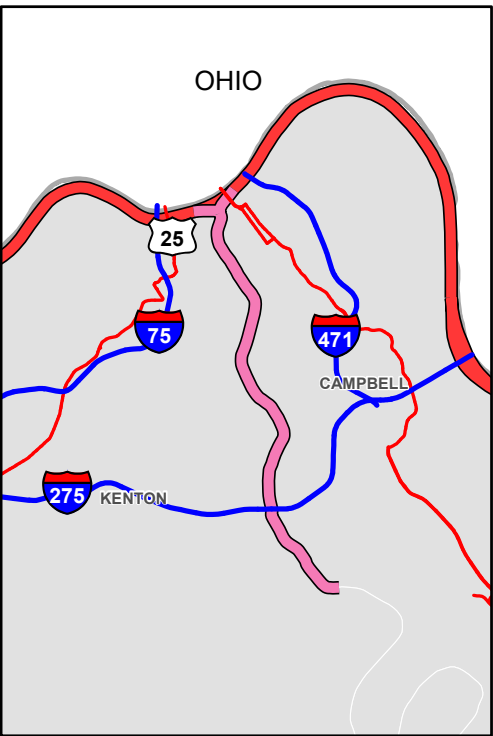
Officially recognized by the US Maritime Administration



Big Sandy River Area
M-23



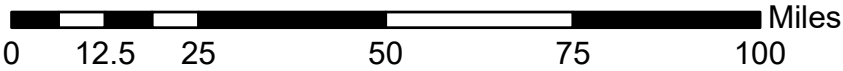
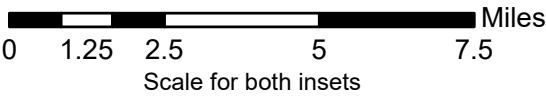
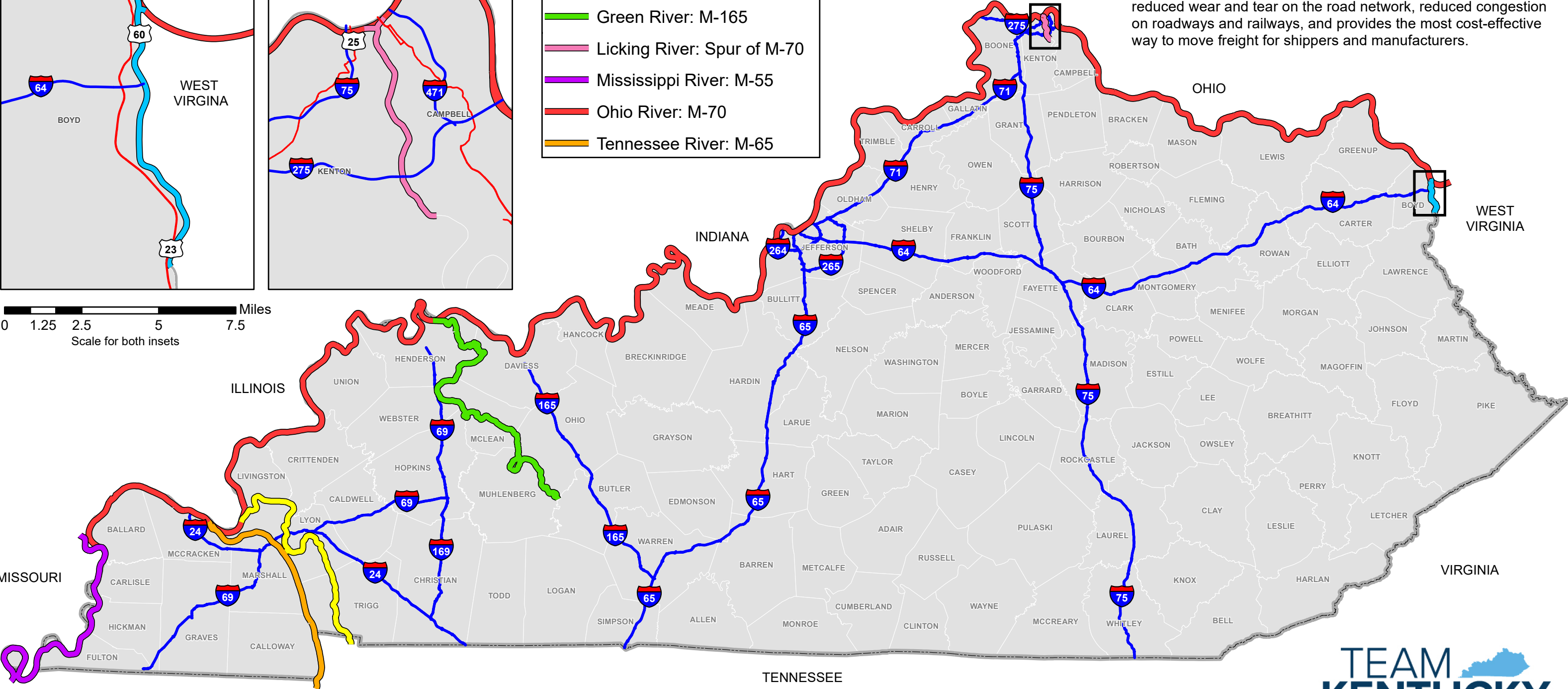
Licking River Area
M-70 Spur



Designated Marine Highways

- Big Sandy River: M-23
- Cumberland River: M-24
- Green River: M-165
- Licking River: Spur of M-70
- Mississippi River: M-55
- Ohio River: M-70
- Tennessee River: M-65

United States Marine Highways are commercially navigable waterways that include rivers, bays, coasts, channels, and the Great Lakes. These Marine highways serve as a viable alternative to landside freight modes to effectively and efficiently move freight. Moving freight by Marine Highways has several benefits, such as reduced wear and tear on the road network, reduced congestion on roadways and railways, and provides the most cost-effective way to move freight for shippers and manufacturers.



Map Updated: 2025

