

EDDYVILLE RIVERPORT & INDUSTRIAL DEVELOPMENT AUTHORITY

978 Old Railroad Road
Eddyville, KY 42038
270-388-9671
www.eddyvilleriverport.com

KEY FEATURES:

- Placid water environment with proximity to the Ohio River and Tennessee – Tombigbee Waterway
- Located within an established agricultural footprint supporting inbound grains and outbound fertilizers
- Only operating public riverport on the Cumberland River/Lake Barkley
- Terminal operations area offers 2,700 ft of linear water frontage
- 5 port operations acres; 20 tenant acres; 202 acres available
- 122 additional acres in the Eddyville Industrial Park served by the P&L short line railroad, ~ 5 miles from the port
- Annual cargo movement by water: \$7 billion, 56 million tons (region total)



WATERWAY:

Cumberland River mile 43
in Lyon County on the
Cumberland River/Lake Barkley



RAILROAD:

20-acre industrial park served
by P&L short-line railroad with
direct interchange with four
Class I railroads



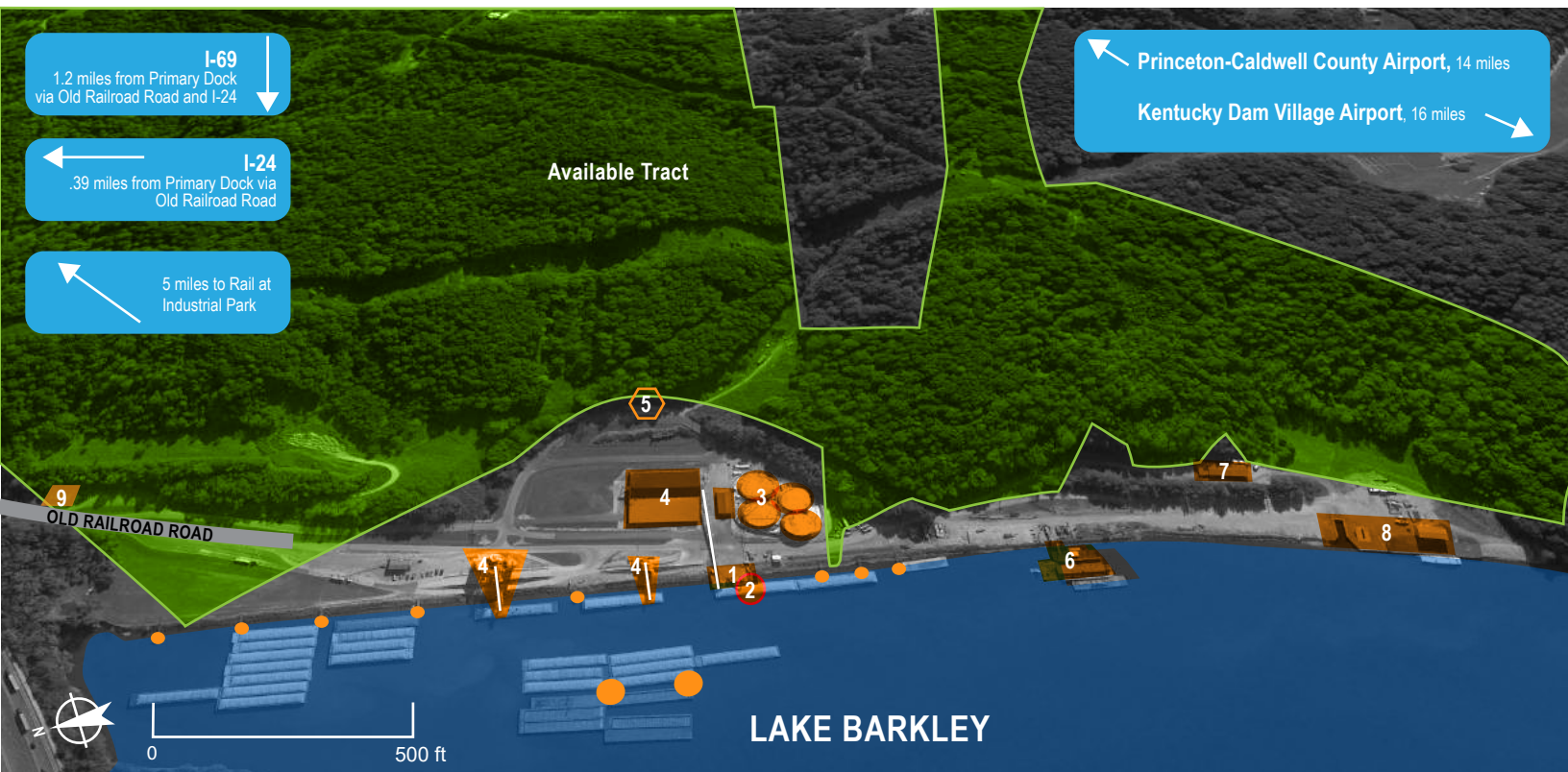
ROADWAY:

Located two miles from
US 62, adjacent to I-24,
within one mile of I-69



AVIATION:

Princeton-Caldwell County
Airport, 14 miles; Kentucky
Dam Village Airport, 16 miles



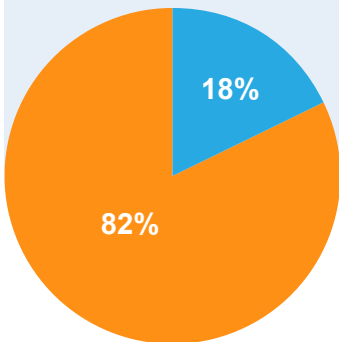
KEY FEATURES:

- | | | | | |
|-----------------|-----------------------------------|--------------------------|-------------------------------------|-----------------------|
| 1) Primary Dock | 3) Fertilizer Operations Facility | 5) Truck Scale | 7) Fish Processing Facility | 9) Riverport Office |
| 2) Crane | 4) Grain Handling Facilities | 6) Barge Repair Facility | 8) Boat Storage and Repair Facility | ●) Additional Mooring |
| | | | | ↘) Conveyor Belt |



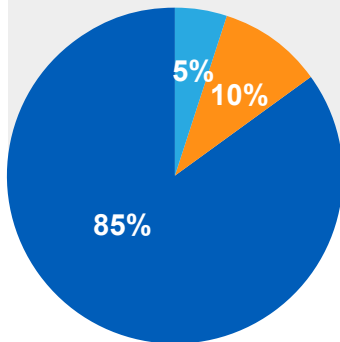
BARGE CARGO:

Coal, petroleum products, fertilizers, construction materials, agricultural commodities, metal scrap, and chemicals



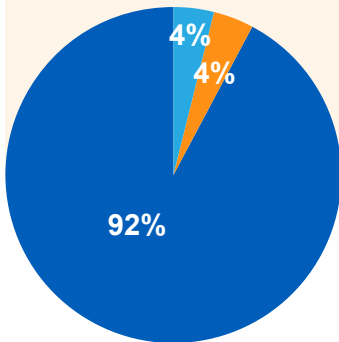
RAIL CARGO:

Consumer goods, grain, agricultural commodities, construction materials, coal, and petroleum products



TRUCK CARGO:

Agricultural commodities, construction materials, consumer products, coal, petroleum products, and beverages



FUTURE INFRASTRUCTURE INVESTMENT

FY 22
Dock Tieback Repairs
\$253,000



CARGO MOVEMENTS BY MODE, 2018 HINTERLAND = **INBOUND** | **OUTBOUND** | **THROUGH**

PORT FACILITY INFRASTRUCTURE

Port Tenants: Agri Chem, Hu-B, Ky Fish Center, Gavilon, Paducah Barge, and Rottering Marine

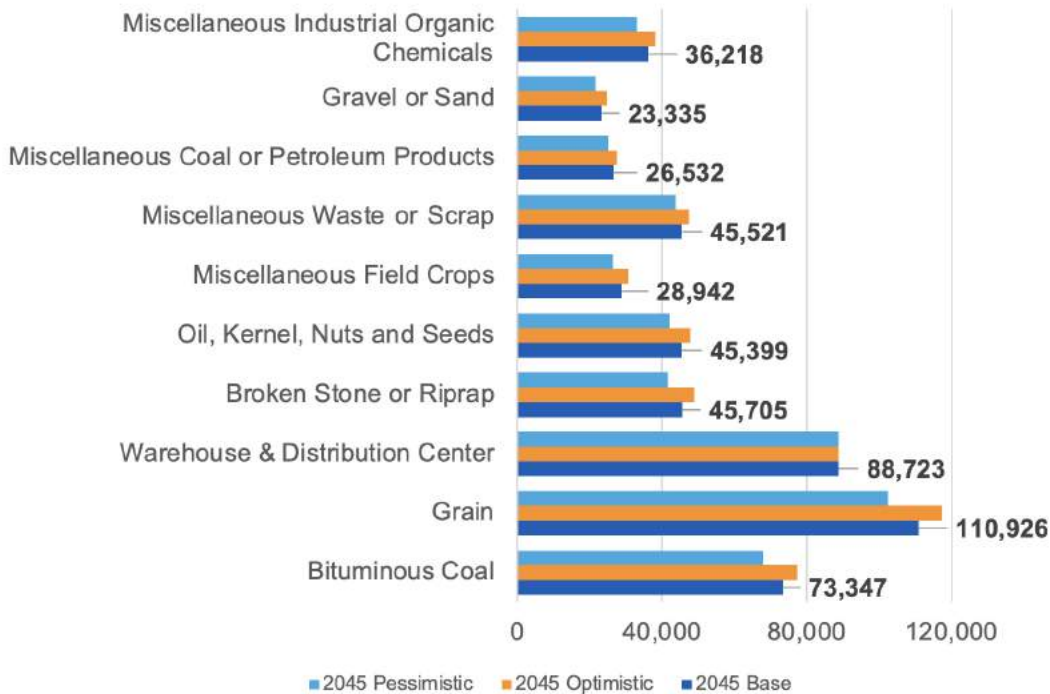
Industrial Park Tenants: DHL, BGB Trucking, Inc.

Storage and Warehouse:

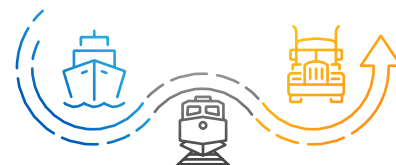
The grain facility can store about 70,000 bushels and contains a truck scale, two truck dump pits, and two conveyor systems. An adjacent hardstand area is used for seasonal corn storage, averaging 630,000 bushels.

Regional Workforce: The largest industries are public administration (146 people), accommodation and food services (143 people), and retail trade (135 people) for a total of 885 employees. The highest paying industries are construction (\$71,458), manufacturing (\$54,750), and transportation, warehousing, and utilities (\$43,375). *Source: datausa.io*

Top Regional Commodities: Forecast Scenarios (Tons)



Based on 2018 Transearch Data



KENTUCKY RIVERPORTS, HIGHWAY & RAIL FREIGHT NETWORK