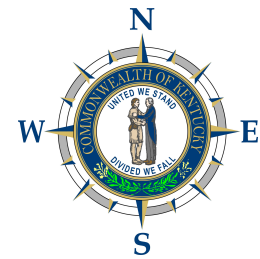


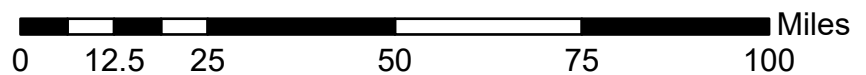
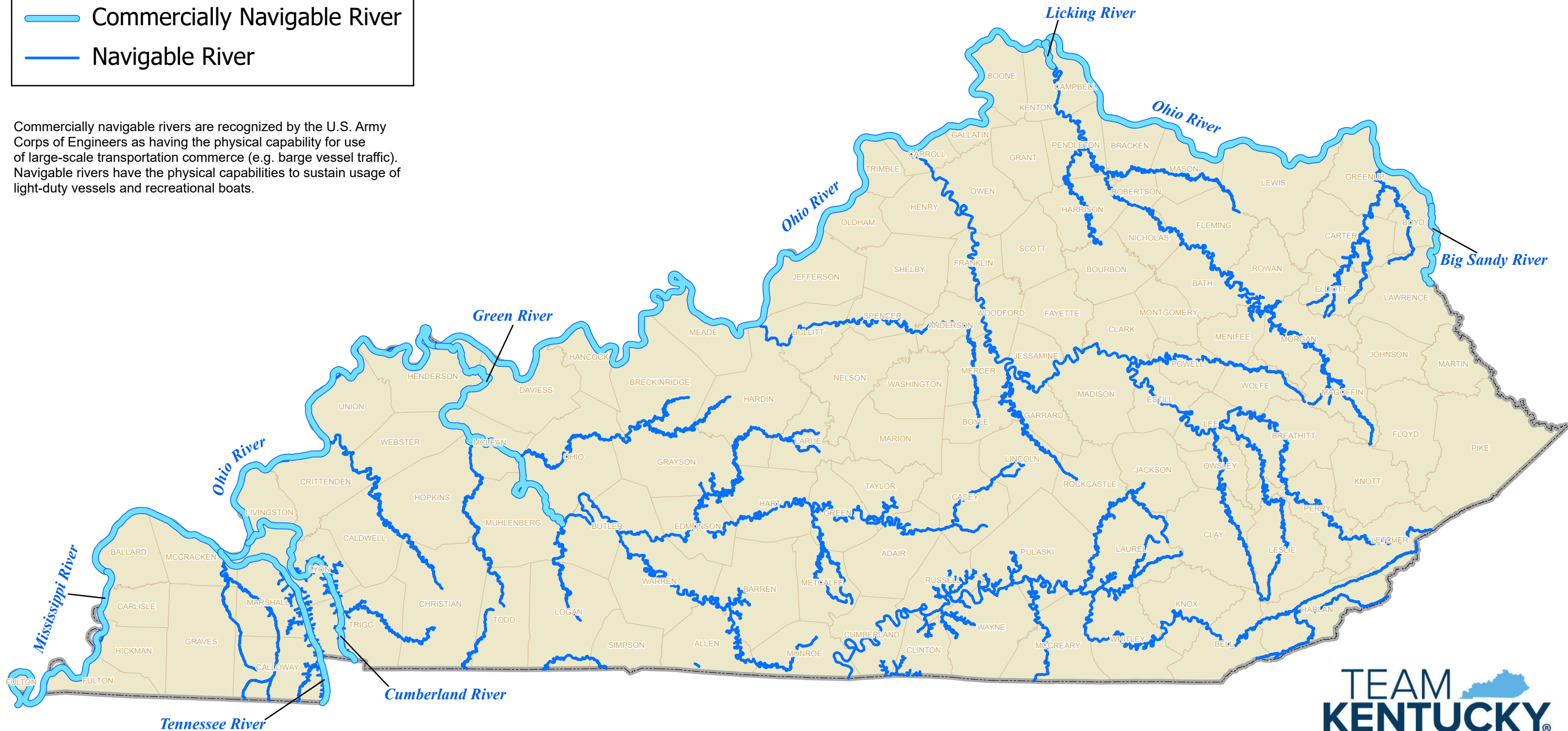
# KENTUCKY NAVIGABLE WATERWAYS

As recognized by the U.S. Army Corps of Engineers



— Commercially Navigable River  
— Navigable River

Commercially navigable rivers are recognized by the U.S. Army Corps of Engineers as having the physical capability for use of large-scale transportation commerce (e.g. barge vessel traffic). Navigable rivers have the physical capabilities to sustain usage of light-duty vessels and recreational boats.



Map Updated: 2026

