

KENTUCKY NAVIGABLE WATERWAYS

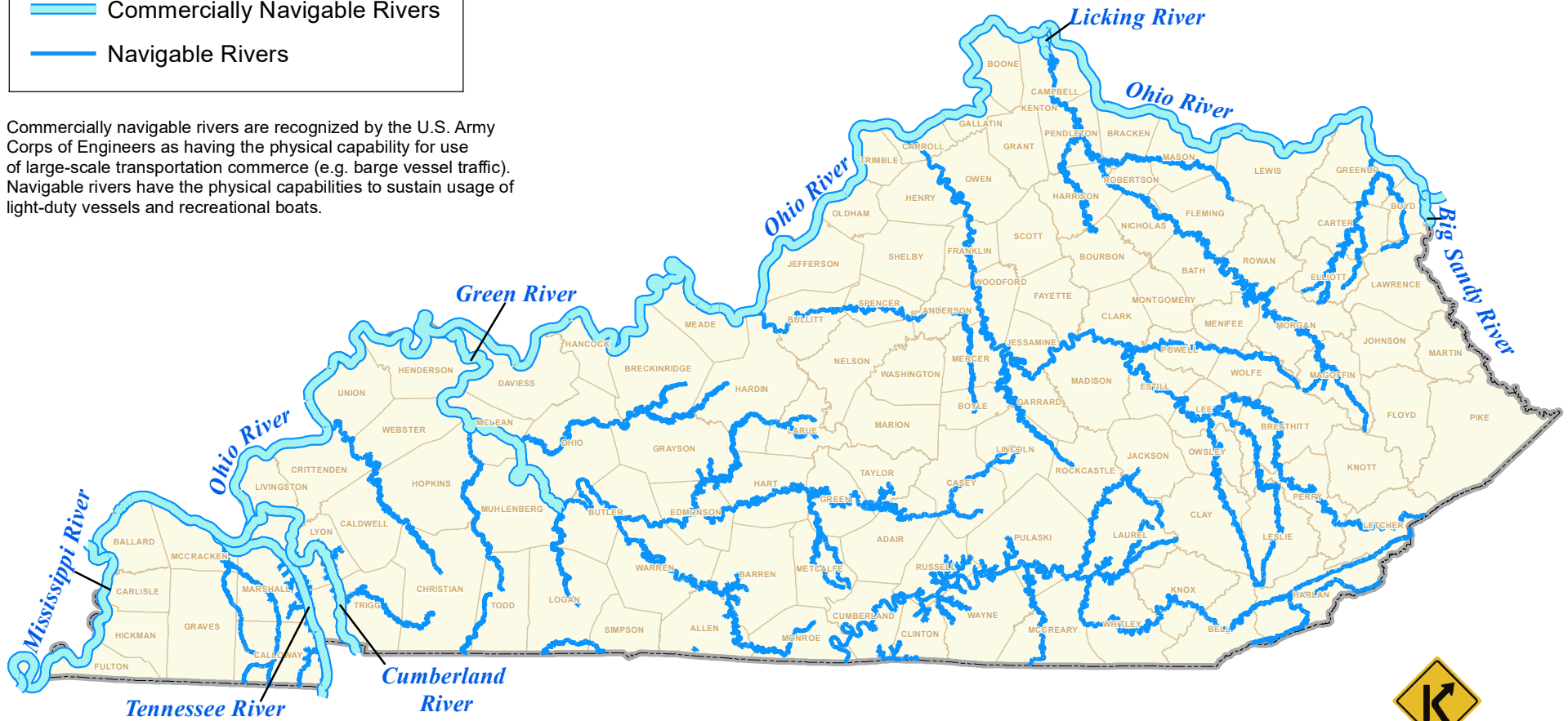
As recognized by the U.S. Army Corps of Engineers



Legend:

- Commercially Navigable Rivers (represented by a thick blue line)
- Navigable Rivers (represented by a thin blue line)

Commercially navigable rivers are recognized by the U.S. Army Corps of Engineers as having the physical capability for use of large-scale transportation commerce (e.g. barge vessel traffic). Navigable rivers have the physical capabilities to sustain usage of light-duty vessels and recreational boats.



Map Updated: March 2020

