



Water Transportation Advisory Board

Friday, June 20, 2025
1:00 PM to 3:00 PM ET



Agenda:

Welcome and Introductions

Public Comment Period (2-3 minutes max)

Presentation of Minutes from February 28, 2025, meeting

Update on status of open and closed Kentucky Riverport Improvement (KRI) projects and Kentucky Public Riverport Construction and Maintenance (KPRCM) projects

Submission of and Discussion of Conflict-of-Interest Statements

Discussion of FY 26 Kentucky Riverport Improvement (KRI) program

Summary of applications received for FY 26 KRI funds

Review and Prioritization of application for FY 26 KRI applications

Discussion of FY 26 Kentucky Public Riverport Construction and Maintenance (KPRCM) program

Summary of applications received for FY 26 KPRCM funds

Review and Approval of applications for FY 26 KPRCM applications

Election of WTAB Chair and Vice Chair

Discussion of a potential Economic Impact of Kentucky's Ports and Waterways study

Discussion of next WTAB meeting

Adjournment



Agenda:

Welcome and Introductions

Public Comment Period (2-3 minutes max)

Presentation of Minutes from February 28, 2025, meeting

Update on status of open and closed Kentucky Riverport Improvement (KRI) projects and Kentucky Public Riverport Construction and Maintenance (KPRCM) projects

Submission of and Discussion of Conflict-of-Interest Statements

Discussion of FY 26 Kentucky Riverport Improvement (KRI) program

Summary of applications received for FY 26 KRI funds

Review and Prioritization of application for FY 26 KRI applications

Discussion of FY 26 Kentucky Public Riverport Construction and Maintenance (KPRCM) program

Summary of applications received for FY 26 KPRCM funds

Review and Approval of applications for FY 26 KPRCM applications

Election of WTAB Chair and Vice Chair

Discussion of a potential Economic Impact of Kentucky's Ports and Waterways study

Discussion of next WTAB meeting

Adjournment



Agenda:

Welcome and Introductions

Public Comment Period (2-3 minutes max)

Presentation of Minutes from February 28, 2025, meeting

Update on status of open and closed Kentucky Riverport Improvement (KRI) projects and Kentucky Public Riverport Construction and Maintenance (KPRCM) projects

Submission of and Discussion of Conflict-of-Interest Statements

Discussion of FY 26 Kentucky Riverport Improvement (KRI) program

Summary of applications received for FY 26 KRI funds

Review and Prioritization of application for FY 26 KRI applications

Discussion of FY 26 Kentucky Public Riverport Construction and Maintenance (KPRCM) program

Summary of applications received for FY 26 KPRCM funds

Review and Approval of applications for FY 26 KPRCM applications

Election of WTAB Chair and Vice Chair

Discussion of a potential Economic Impact of Kentucky's Ports and Waterways study

Discussion of next WTAB meeting

Adjournment

DRAFT

Water Transportation Advisory Board (WTAB)
February 28, 2025, Meeting Minutes

Approved by WTAB (date): _____

The meeting of the Water Transportation Advisory Board (WTAB) was called to order at 10:02 AM on February 28, 2025, held online.

The WTAB members in attendance were:

Brian Wright, Chair
Billy Ray Coursey, Vice Chair
Chuck Davis

Amanda Davenport
Wayne Cassady
Miguel Zamora

Also, in attendance were:

Jeremy Edgeworth, KYTC
Ben Weithman, Henderson Riverport
Greg Curlin, Hickman Riverport
Jerry Pace, West Kentucky Regional Riverport
Lisa Wilson-Plajer, Gonzalez Companies
Bradley Syler, Marine Solutions
Mikael Pelfrey, KYTC

Jay Balaji, KYTC
Chad Dorsey, MARAD
Jennifer Kirchner, KBT
Jim Garrett, Paducah Riverport
Shelly Byrne, Waterways Journal
Vinay Polepalli, HMB

Welcome and Introductions:

The Chair welcomed all in attendance and all attendees introduced themselves.

Public Comment Period:

The Chair invited all attendees to make comments. No public comments were made.

Presentation of Minutes from December 4, 2024

The minutes of the December 4, 2024, meeting were presented and subsequently unanimously approved on motion of Miguel Zamora, seconded by Chuck Davis.

Update on Status of Open and Closed KRI projects

Jeremy Edgeworth presented a PowerPoint presentation of open and closed KRI projects and invited representatives from the Riverports to discuss the status of their projects.

- Ben Weithman (Henderson Riverport)-Automated Truck Scale Project-Project installed new automatic truck scales that provide more efficient movement of trucks. Project also included adding access drives to divert traffic increasing efficiency. Work is completed; KYTC Inspection completed, administrative closeout in progress.
- Brian Wright (Owensboro Riverport)-10,000lbs Forklift Project-Project purchased a new 10,000lbs forklift to unload metals receive by barge or railcar. Forklift has been delivered, KYTC has inspected, administrative closeout in progress.
- Brian Wright (Owensboro Riverport)-25,000lbs Forklift Project-Project purchased a new 25,000lbs forklift to handle metals for placing in storage and loading for outbound. Forklift has been delivered, KYTC has inspected, administrative closeout in progress.
- Jim Garrett (Paducah Riverport)-4th Street Concrete Aprons Project-Project replaced two 1970-1980s vintage entranceways and aprons that are extremely deteriorated. Replacement aprons provide increased access into bulk commodity storage yard. Work is completed; KYTC Inspection completed, administrative closeout in progress.

February 28, 2025, Minutes



Agenda:

Welcome and Introductions

Public Comment Period (2-3 minutes max)

Presentation of Minutes from February 28, 2025, meeting

Update on status of open and closed Kentucky Riverport Improvement (KRI) projects and Kentucky Public Riverport Construction and Maintenance (KPRCM) projects

Submission of and Discussion of Conflict-of-Interest Statements

Discussion of FY 26 Kentucky Riverport Improvement (KRI) program

Summary of applications received for FY 26 KRI funds

Review and Prioritization of application for FY 26 KRI applications

Discussion of FY 26 Kentucky Public Riverport Construction and Maintenance (KPRCM) program

Summary of applications received for FY 26 KPRCM funds

Review and Approval of applications for FY 26 KPRCM applications

Election of WTAB Chair and Vice Chair

Discussion of a potential Economic Impact of Kentucky's Ports and Waterways study

Discussion of next WTAB meeting

Adjournment

Henderson County Riverport Authority
12,000 lbs. Forklift Project
Total Cost: \$96,900.00 – KRI Awarded: \$27,413.00
Status: **Forklift delivered, KYTC Inspection needed, closeout in process.**



Project replaced an older 11,000 lbs. forklift near the end of its useful life with a new Taylor GTR-120 or equivalent. Replacing forklift fleet will ensure enough units to accommodate customers needs.



Henderson County Riverport Authority
15,500 lbs. Forklift Project
Total Cost: \$119,200.00 – KRI Awarded: \$95,360.00
Status: Forklift delivered, KYTC Inspection needed, closeout in process.



Project replaced an older 15,500 lbs. forklift near the end of its useful life with a new Taylor GT-155 or equivalent. Replacing forklift fleet will ensure enough units to accommodate customers needs.



Hickman Fulton County Riverport Authority
Spreader Bar and Coil Hooks Project
Total Cost: \$24,500.00 – KRI Awarded: \$19,600.00
Status: **Bid process completed, vendor starting on fabrication.**



Project will design and construct new spreader bar and coil hooks for unloading different size wire coils from barges. Current equipment is wearing out and is not compatible with the different sizes of wire coils handled by the riverport.

Louisville Jefferson County Riverport Authority

Caterpillar 255 Skid Steer Project

Total Cost: \$81,508.00 – KRI Awarded: \$65,207.00

Status: **Skid Steer delivered, KYTC Inspection needed, closeout in process.**



Project replaced leased skid steer with 2025 hours with a new CAT 255 on statewide master agreement. Skid steer is used at port to transload bulk materials from barges and rail cars. Skid steers clean barges carrying bulk materials and recover spillage incurred in transload operations.



Owensboro Riverport Authority
Low Road Loadout Project
Total Cost: \$305,497.00 – KRI Awarded: \$152,749.00
Status: **Construction complete, closeout in progress.**



Project stabilized and concreted the bulk loadout dock. Area is subject to soft soils and saturated ground. When loading materials, trucks dumping in this area are getting stuck and contaminating material being staged. Project allows for sufficient drainage and provides concrete stabilization for operations.



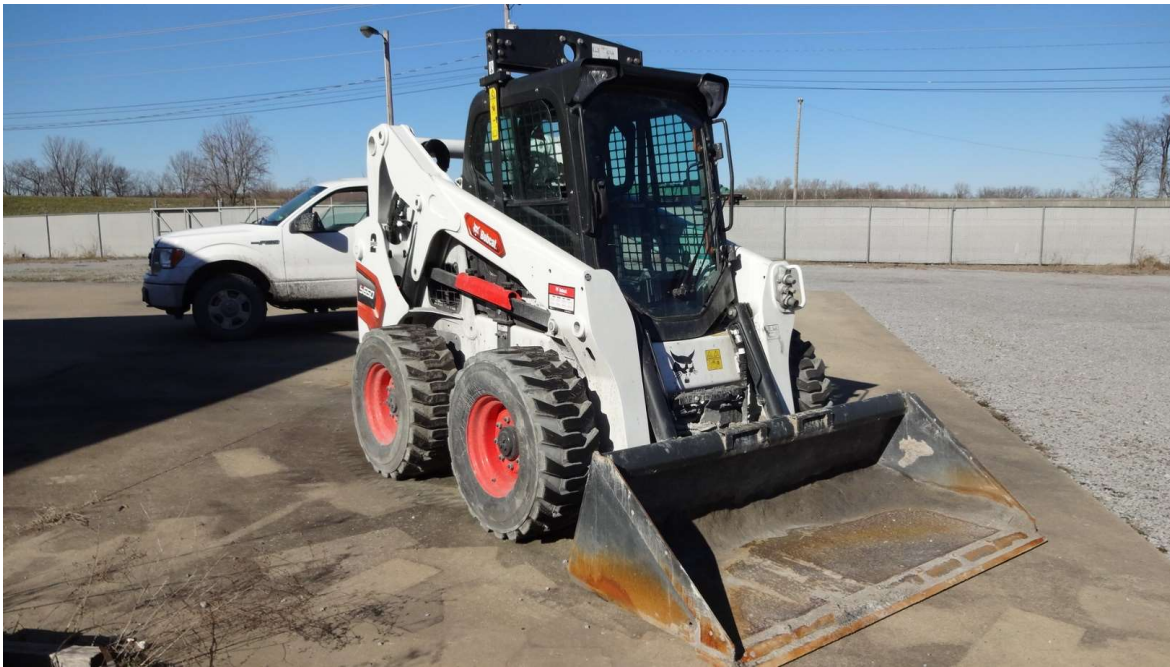
Paducah McCracken County Riverport Authority
48-foot Flatbed Trailer Project
Total Cost: \$35,300.00 –KRI Awarded: \$28,240.00
Status: **Trailer delivered, closeout in progress.**



Project purchased a 48-foot, spring slider, steel chassis flatbed trailer to replace rented trailer. Trailer is used to distribute supersacks arriving by barge into multiple port owned warehouses before distribution to the region. Purchase of trailer would create redundancy by avoiding days when a flatbed trailer is not available to rent.

Paducah McCracken County Riverport Authority
Bobcat S650 Skid Steer Loader Project
Total Cost: \$57,569.00 – KRI Awarded: \$46,055.00
Status: **Skid Steer delivered, closeout in progress.**

Project replaced existing 2015 Bobcat near the end of its useful life with a new Bobcat S650 utilizing a statewide master agreement. Skid Steer is utilized with discharging operations at bulk commodity river berth.



Eddyville Riverport and Industrial Development Authority Dolphin Installation Project

Total Cost: \$1,498,905.00 – KPRCM Awarded: \$1,265,075.00

Status: Finalizing location of dolphins. Geotech to start soon. Scheduling drilling rig.

Project would install four mooring dolphins to facilitate the staging of additional barges. The mooring dolphins will provide efficient access for the movement of barge traffic without delaying current operations at the port.



Greenup Boyd County Riverport Authority
Material Handling Replacement & Improvement Project
Total Cost: \$1,425,801.18 – KPRCM Awarded: \$750,000.00

Status: **Skid steer and backhoe delivered, down payment made on material handler.**



Project will purchase a new material handler, skid steer and backhoe to enhance barge offloading capabilities and movement of materials through the riverport.

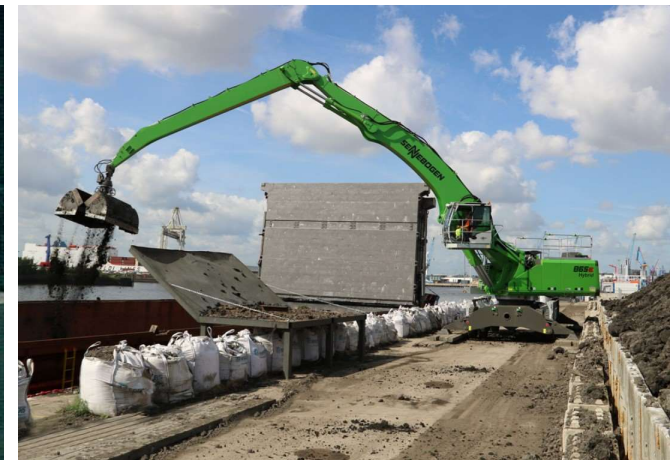
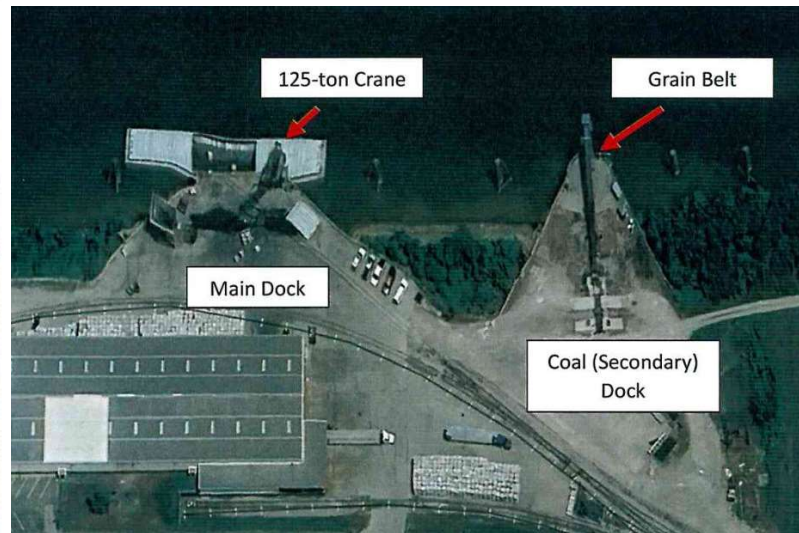


Henderson County Riverport Authority
Electric Material Handler Project
Total Cost: \$2,000,190.00 – KPRCM Awarded: \$958,890.00
Status: **Material handler ordered, expected delivery October 2025.**

Secondary Dock/Grain Belt



Project will purchase a new material handler to replace the mobile conveyor system at secondary dock slated for removal. Material handler would facilitate loading and unloading of bulk fertilizer, aggregates, grain and scrap. Would also provide backup to existing 40-year-old 125-ton cable crane.



Hickman-Fulton County Riverport Authority
Crane Aggregate Clamshell Bucket Project
Total Cost: \$84,895.00 – KPRCM Awarded: \$84,895.00
Status: **Bid packet approved. Bids due next week.**



This proposed project would design and construct a four-rope 4-cubic yard aggregate clamshell bucket to handle rock or aggregate materials. This would supplement the existing 6.5 cubic yard light material clamshell bucket that cannot handle aggregate or rock.

Hickman Fulton County Riverport Authority
Mooring Dock Cell Repair Project
Total Cost: \$550,000.00 – KPRCM Awarded: \$481,900.00

Status: Conveyor Mooring Cell repairs completed; remaining work will begin in Summer.



Project would make long term repairs to Mooring Cells 2, 3, and 4. Temporary patches and repairs have been made, but full circumference bands are needed for protection and stability and to prevent loss of internal ballast stone.



Hickman-Fulton County Riverport Authority
Grain Truck Conveyor Upgrade Project
Total Cost: \$175,000.00 – KPRCM Awarded: \$175,000.00
Status: **Developing bid packet.**



This proposed project would upgrade the Grain Truck Conveyor to allow for the eventual addition of a Hopper Surge Tank. The addition of the Hopper Surge Tank would hold grain until a barge is in position to accept grain. This will help eliminate long wait lines while the barges are moved. This part of the project will upgrade the pit conveyor and bucket lift to move grain to a future Hopper Surge Tank.

Hickman Fulton County Riverport Authority
Volvo L90H2 Wheeled Loader Project
Total Cost: \$305,100.00 – KPRCM Awarded: \$268,100.00
Status: **Loader has been delivered, closeout in progress.**



Project replaced wheel loader from 2003 that has become increasing difficult to maintain due to its age. New Volvo L90H2 Wheeled Loader would be used to load and unload bulk materials to truck once unloaded from barges. Loader would be purchased from Statewide Master Agreement.



Louisville Jefferson County Riverport Authority
Gantry Crane Rehab Project

Total Cost: \$700,000.00 – KPRCM Awarded: \$700,000.00

Status: Phase I (bus bar replacement) in progress, procurement of final phase underway.

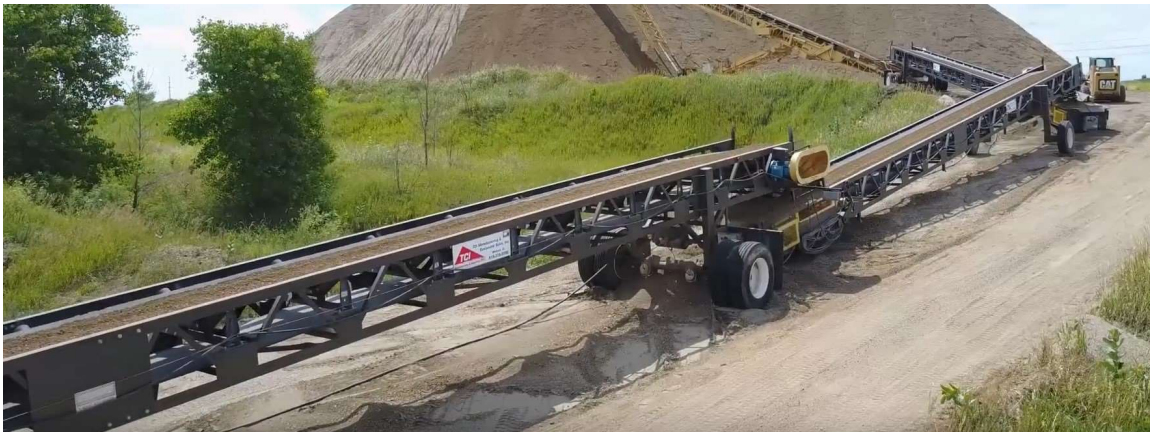


Project will replace 35-year-old gantry cranes electronic power, command control, cab, and braking systems. Rehab project would make river transportation more reliable for customers, improve safety and make river dock's business sustainable.

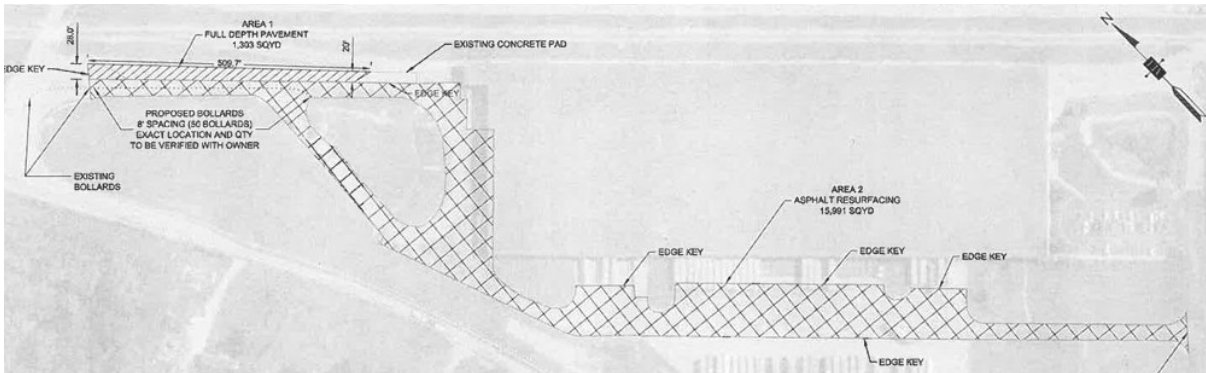
Maysville Mason County Riverport Authority
Riverport Equipment Purchase Project
Total Cost: \$622,522.00 – KPRCM Awarded: \$622,522.00
Status: **Bidding process completed, reviewing submitted bids.**



Project will purchase Triple Stack Portable Transfer Conveyor, Large Wheel Loader, and Radial Stacker to allow Riverport to continue current operations consisting of loading coal ash from the adjacent rail line facility. Also allow expansion of operations to include agricultural transport.



Owensboro Riverport Authority
Resurfacing and Exit Road Extension Project
Total Cost: \$381,743.00 – KPRCM Awarded: \$381,743.00
Status: **Bidding process completed, vendor selected.**



Proposed project would repair existing asphalt and provide a more efficient exiting of trucks from warehouse and guard check in. Area 1 would be adding full depth pavement to widen exit. Area 2 would be resurfacing asphalt from 2003 that is beginning to fail. Final portion of project would be to replace plastic truck barriers with sleeved bollards.



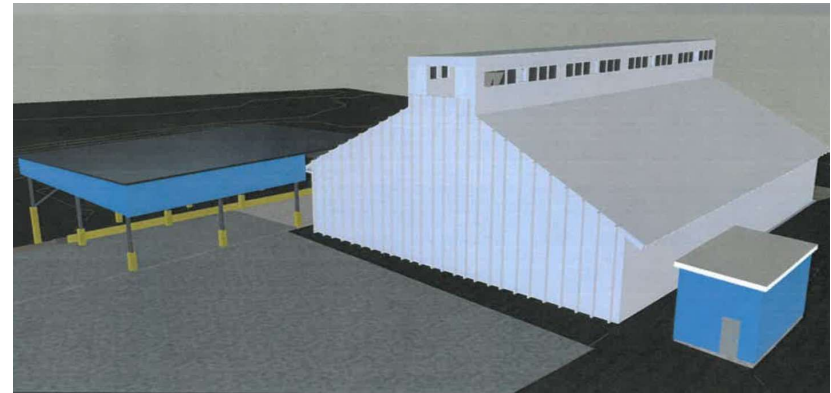
Owensboro Riverport Authority Warehouse 10 Project

Total Cost: \$1,063,954.00 – KPRCM Awarded: \$750,000.00

Status: **All work complete, pending electrical inspection and engineering sign off.**

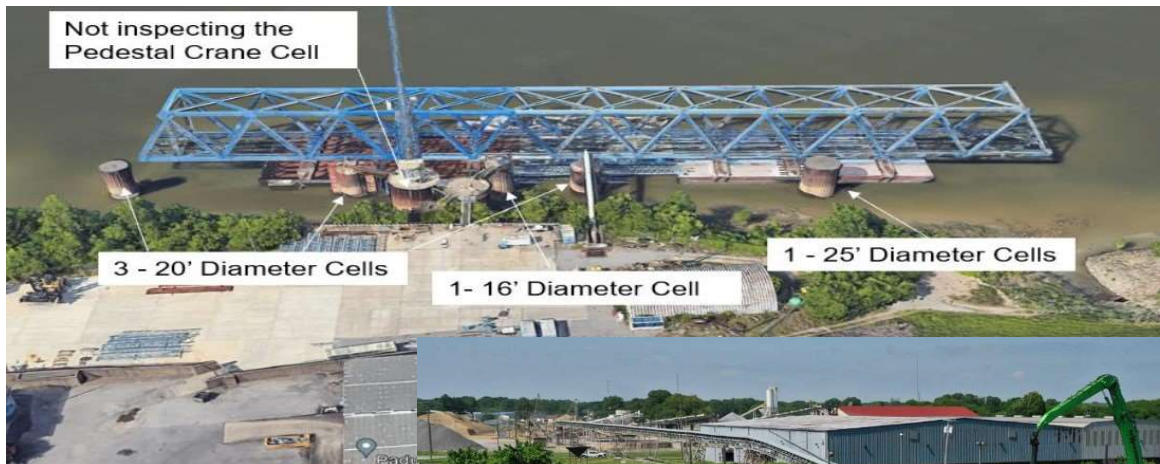


This project will install new electric and build an overhang dock area for loading out during all conditions prior to being able to lease out facility for bulk storage.

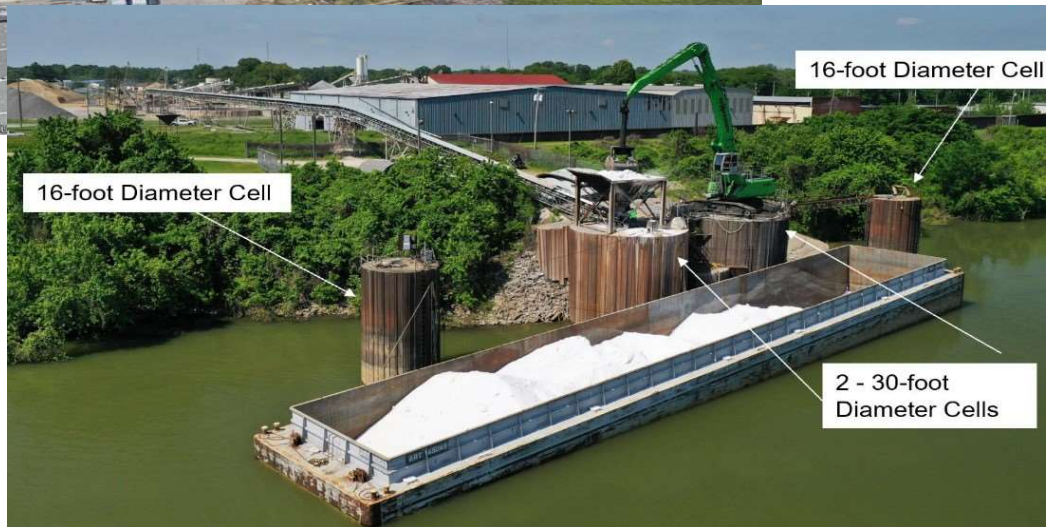


Paducah McCracken County Riverport Authority
Barge Cell Revitalization Project
Total Cost: \$750,000.00 – KPRCM Awarded: \$750,000.00

Status: RFQ for dredging/environmental services completed, scope for repairs being developed.



Project involves inspection of nine barge cells by engineers and divers and then begin making repairs to the most needed barge cells. Repairs would involve patches or full bands and replenishing cell aggregate material.



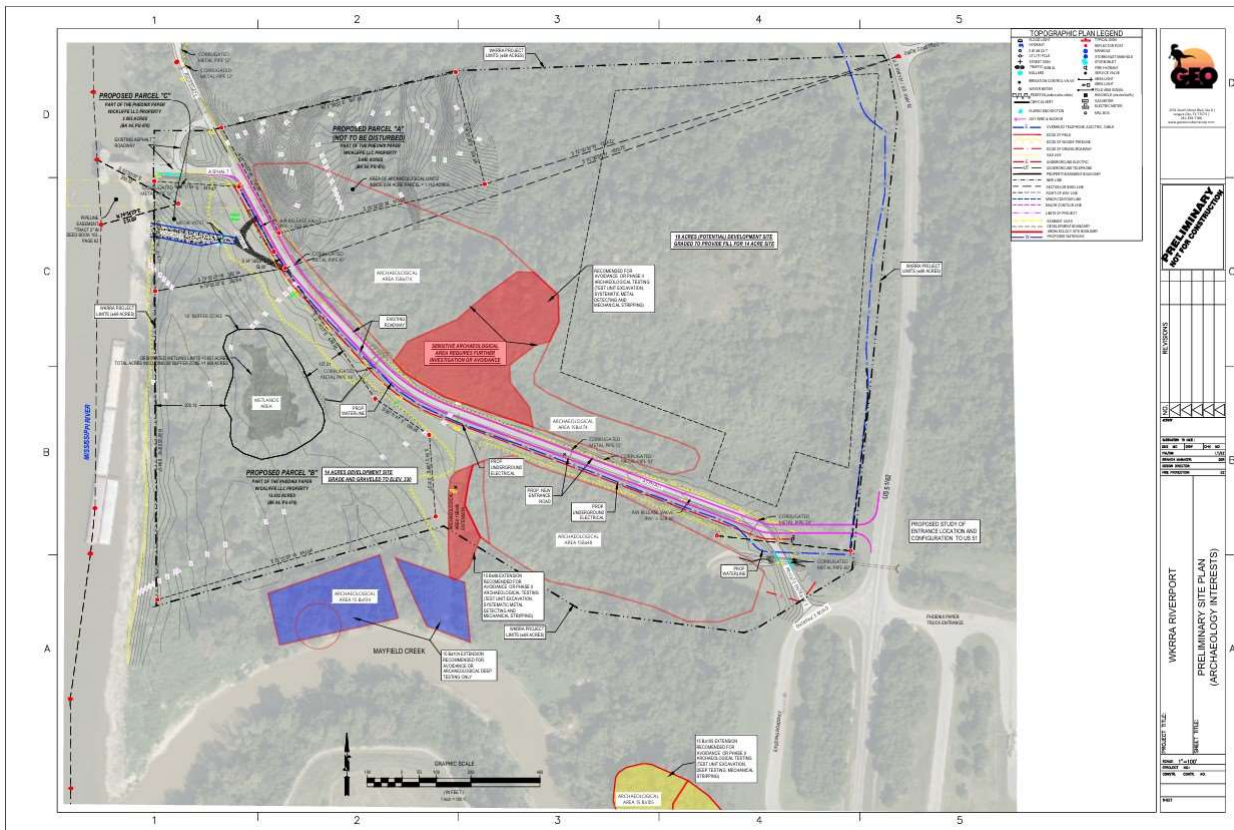
Paducah-McCracken County Riverport Authority
Sennebogen Bucket Replacement Project
Total Cost: \$61,875.00 – KPRCM Awarded: \$61,875.00
Status: **Bidding process completed. Notice to Proceed issued.**



The proposed project would replace the current 4.5 cu/yd bucket with a 3.5 cu/yd bucket. A performance study found the material handler is currently operating beyond its designed hydraulic lifting capacity. A smaller bucket would allow machine to operate within its design parameters throughout unloading cycle range, which would reduce barge unloading time, unscheduled downtime and maintenance costs.

West Kentucky Regional Riverport Authority Archaeological Excavation of Fort Jefferson Project Total Cost: \$250,988.00 – KPRCM Awarded: \$250,000.00

Status: Right of Entry obtained, Section 7/Wetlands field work complete. Archaeology contract under review.



WKRRR is proposing to develop a new 19-acre inland riverport on the location of the former Fort Jefferson. Project would document and recover cultural resources in the proposed Fort Jefferson areas to comply with Section 106 of the National Historic Preservation Act. Once complete, WKRRR can begin development of the riverport.



Agenda:

Welcome and Introductions

Public Comment Period (2-3 minutes max)

Presentation of Minutes from February 28, 2025, meeting

Update on status of open and closed Kentucky Riverport Improvement (KRI) projects and Kentucky Public Riverport Construction and Maintenance (KPRCM) projects

Submission of and Discussion of Conflict-of-Interest Statements

Discussion of FY 26 Kentucky Riverport Improvement (KRI) program

Summary of applications received for FY 26 KRI funds

Review and Prioritization of application for FY 26 KRI applications

Discussion of FY 26 Kentucky Public Riverport Construction and Maintenance (KPRCM) program

Summary of applications received for FY 26 KPRCM funds

Review and Approval of applications for FY 26 KPRCM applications

Election of WTAB Chair and Vice Chair

Discussion of a potential Economic Impact of Kentucky's Ports and Waterways study

Discussion of next WTAB meeting

Adjournment

DISCLOSURE OF CONFLICT OF INTEREST STATEMENT

TO: WATER TRANSPORTATION ADVISORY BOARD

FROM: _____
Name Position

Agency, Board, or Commission Telephone

MEMBER OF BOARD OR COMMISSION COMPLETES

1. Executive Order 2008-454 requires members appointed to policy making and regulatory boards or commissions to disclose in writing any interest he or she possesses or acquires that might reasonably tend to create a conflict with the public interest. Please be advised that I have the following business, financial or personal interest which may create an actual or perceived conflict:

2. The following matter is before this board or commission and is related to the above interest:

3. I have the following duties or responsibilities to the board or commission that are related to the above interest:

4. a. A decision on this matter will take place, or took place, on _____
(mm/dd/yyyy)

Yes No

b. I participated, or plan to participate, in the decision making process on this matter.

I did/will not participate in the decision making process on this matter.

5. I request advice from the board or commission regarding this matter.

Date Signature

BOARD OR COMMISSION DETERMINATION

____ 1. The facts disclosed do not indicate a conflict of interest exists.

____ 2. The facts disclosed indicated a conflict of interest because:

____ 3. The board or commission action(s):

Date Chair

Conflicts of Interest

- **No Conflict**

- Sections 1, 2 & 3 write "Not Applicable"
- In Section 4b after "I participated, or plan to participate, in the decision-making process on this matter", indicate Yes.
- Leave Section 5 blank
- Sign and Date

- **Conflict**

- Section 1, outline your riverport association.
- Section 2, identify that you have submitted applications for KRI/KPRCM grant funds, but will not be voting on your projects.
- Section 3, identify your role with the board (Board Chair, Board Member, etc).
- Section 4b after "I participated, or plan to participate, in the decision-making process on this matter", indicate Yes.
- Leave Section 5 blank
- Sign and Date

DISCLOSURE OF CONFLICT OF INTEREST STATEMENT

TO: WATER TRANSPORTATION ADVISORY BOARD

FROM: _____
Name Position

Agency, Board, or Commission Telephone

MEMBER OF BOARD OR COMMISSION COMPLETES

1. Executive Order 2008-454 requires members appointed to policy making and regulatory boards or commissions to disclose in writing any interest he or she possesses or acquires that might reasonably tend to create a conflict with the public interest. Please be advised that I have the following business, financial or personal interest which may create an actual or perceived conflict:

2. The following matter is before this board or commission and is related to the above interest:

3. I have the following duties or responsibilities to the board or commission that are related to the above interest:

4. a. A decision on this matter will take place, or took place, on _____
(mm/dd/yyyy)

Yes No

b. I participated, or plan to participate, in the decision making process on this matter.

I did/will not participate in the decision making process on this matter.

5. I request advice from the board or commission regarding this matter.

Date

Signature

BOARD OR COMMISSION DETERMINATION

____ 1. The facts disclosed do not indicate a conflict of interest exists.

____ 2. The facts disclosed indicated a conflict of interest because:

____ 3. The board or commission action(s):

Date

Chair

Conflicts of Interest

- Chair

- No Conflict

- Mark Section 1, "The facts disclosed do not indicate a conflict of interest exists."
 - Sign and date at bottom.

- Conflict

- Mark Section 2, "The facts disclosed indicated a conflict of interest because:"
 - Write "X has submitted applications for grants to be considered by WTAB"
 - Mark Section 3, "The board or commission action(s):"
 - Write "X will be excluded from voting on their applications."
 - Sign and date at bottom.



Agenda:

Welcome and Introductions

Public Comment Period (2-3 minutes max)

Presentation of Minutes from February 28, 2025, meeting

Update on status of open and closed Kentucky Riverport Improvement (KRI) projects and Kentucky Public Riverport Construction and Maintenance (KPRCM) projects

Submission of and Discussion of Conflict-of-Interest Statements

Discussion of FY 26 Kentucky Riverport Improvement (KRI) program

Summary of applications received for FY 26 KRI funds

Review and Prioritization of application for FY 26 KRI applications

Discussion of FY 26 Kentucky Public Riverport Construction and Maintenance (KPRCM) program

Summary of applications received for FY 26 KPRCM funds

Review and Approval of applications for FY 26 KPRCM applications

Election of WTAB Chair and Vice Chair

Discussion of a potential Economic Impact of Kentucky's Ports and Waterways study

Discussion of next WTAB meeting

Adjournment

FY 2026 KRI Funds

Available Funds: \$500,000.00

- *HB 265/SB 91 - (5) Riverport Improvements: Included in the above General Fund appropriation is \$500,000 in each fiscal year to the Riverport Financial Assistance Trust Fund (KRS 174.210). Notwithstanding KRS 45.229, any portion of General Fund not expended for this purpose shall lapse to the Budget Reserve Trust Fund Account (KRS 48.705). Mandated reports shall be submitted pursuant to Part I, A., 1., (4) of this Act.*
 - \$500,000 for FY 26
 - 80/20 Match
- These will be up-front grant money in the form of a single lump sum payment in the amount of the award as in the past.
- Eligible projects shall provide dredging or improve Riverport facilities, infrastructure, or critical material handling equipment.
- Board members will vote on whether the project is an eligible project and then prioritize eligible projects for funding.



Agenda:

Welcome and Introductions

Public Comment Period (2-3 minutes max)

Presentation of Minutes from February 28, 2025, meeting

Update on status of open and closed Kentucky Riverport Improvement (KRI) projects and Kentucky Public Riverport Construction and Maintenance (KPRCM) projects

Submission of and Discussion of Conflict-of-Interest Statements

Discussion of FY 26 Kentucky Riverport Improvement (KRI) program

Summary of applications received for FY 26 KRI funds

Review and Prioritization of application for FY 26 KRI applications

Discussion of FY 26 Kentucky Public Riverport Construction and Maintenance (KPRCM) program

Summary of applications received for FY 26 KPRCM funds

Review and Approval of applications for FY 26 KPRCM applications

Election of WTAB Chair and Vice Chair

Discussion of a potential Economic Impact of Kentucky's Ports and Waterways study

Discussion of next WTAB meeting

Adjournment

Applications for FY 2026 KRI Funds

Available Funds: \$500,000.00

Applicant	Project	Total Cost	KRI Requested
Eddyville	Port Authority Road Paving	\$183,876.00	\$91,928.00
Henderson	Dock Staging Pad	\$95,590.00	\$76,472.00
Louisville	Barge Cover Handling System	\$114,578.00	\$91,662.40
Owensboro	Two CAT 255 Compact Track Loaders	\$183,051.20	\$146,440.96
Paducah	Mobile Crane	\$120,000.00	\$96,000.00
	Total	\$697,095.20	\$502,503.36

Eddyville Riverport and Industrial Development Authority
Port Authority Road Paving Project
Total Cost: \$183,876.00 – KRI Funds Requested: \$91,928.00

This proposed project will reconstruct and resurface 4,500 feet of Port Authority Road, widen the entrance at KY 93 and add two-foot gravel shoulders. Patchwork repairs by the city has left the road serviceable but significantly deteriorated. A full asphalt overlay is necessary, and a widened entrance and shoulders will improve turning radius for commercial trucks.



FY2026

Henderson County Riverport Authority
Dock Staging Pad Project
Total Cost: \$95,590.00 – KRI Funds Requested: \$76,472.00

The proposed project would construct a 3,025 square foot pad 12" deep with rebar mats to provide a durable surface to allow semi-truck access and allow for efficient and environmentally safe cleanup of spillage.



FY2026

Louisville Jefferson County Riverport Authority
Barge Cover Handling System Project
Total Cost: \$114,578.00 – KRI Funds Requested: \$91,662.40



The proposed project would purchase a mechanical barge cover handling system. Employing a mechanical barge cover handling system will cut the man hours involved in transloading operations by as much as 50% while protecting the safety of individual workers.

Owensboro Riverport Authority
Two CAT 255 Compact Track Loaders Project
Total Cost: \$183,051.20 – KRI Funds Requested: \$146,440.96



The proposed project would replace two heavily deteriorated skid steers that have over 900-hours each. New equipment will provide improved reliability, fuel efficiency, and emissions compliance.



FY2026

Paducah McCracken County Riverport Authority
Mobile Crane Project
Total Cost: \$120,000.00 – KRI Funds Requested: \$96,000.00



The proposed project would replace the 1998 Galion mobile crane with a used mobile crane less than 10 years in age to maintain the elevated conveying system. Due to multiple mechanical issues and failures of the current unit, a mobile crane must be rented to perform these repairs.



FY2026



Agenda:

Welcome and Introductions

Public Comment Period (2-3 minutes max)

Presentation of Minutes from February 28, 2025, meeting

Update on status of open and closed Kentucky Riverport Improvement (KRI) projects and Kentucky Public Riverport Construction and Maintenance (KPRCM) projects

Submission of and Discussion of Conflict-of-Interest Statements

Discussion of FY 26 Kentucky Riverport Improvement (KRI) program

Summary of applications received for FY 26 KRI funds

Review and Prioritization of application for FY 26 KRI applications

Discussion of FY 26 Kentucky Public Riverport Construction and Maintenance (KPRCM) program

Summary of applications received for FY 26 KPRCM funds

Review and Approval of applications for FY 26 KPRCM applications

Election of WTAB Chair and Vice Chair

Discussion of a potential Economic Impact of Kentucky's Ports and Waterways study

Discussion of next WTAB meeting

Adjournment

Applications for FY 2026 KRI Funds

Available Funds: \$500,000.00

Applicant	Project	Total Cost	KRI Requested
Eddyville	Port Authority Road Paving	\$183,876.00	\$91,928.00
Henderson	Dock Staging Pad	\$95,590.00	\$76,472.00
Louisville	Barge Cover Handling System	\$114,578.00	\$91,662.40
Owensboro	Two CAT 255 Compact Track Loaders	\$183,051.20	\$146,440.96
Paducah	Mobile Crane	\$120,000.00	\$96,000.00
	Total	\$697,095.20	\$502,503.36

Eligible projects shall provide dredging or improve Riverport facilities, infrastructure, or critical material handling equipment.



Agenda:

Welcome and Introductions

Public Comment Period (2-3 minutes max)

Presentation of Minutes from February 28, 2025, meeting

Update on status of open and closed Kentucky Riverport Improvement (KRI) projects and Kentucky Public Riverport Construction and Maintenance (KPRCM) projects

Submission of and Discussion of Conflict-of-Interest Statements

Discussion of FY 26 Kentucky Riverport Improvement (KRI) program

Summary of applications received for FY 26 KRI funds

Review and Prioritization of application for FY 26 KRI applications

Discussion of FY 26 Kentucky Public Riverport Construction and Maintenance (KPRCM) program

Summary of applications received for FY 26 KPRCM funds

Review and Approval of applications for FY 26 KPRCM applications

Election of WTAB Chair and Vice Chair

Discussion of a potential Economic Impact of Kentucky's Ports and Waterways study

Discussion of next WTAB meeting

Adjournment

FY 2026 KPRCM Funds

Available Funds: \$750,000.00 per port

- *HB 1, (225) \$7,500,000 in each fiscal year to the General Administration and Support budget unit in the Kentucky Transportation Cabinet to improve public riverports within Kentucky. Of this amount, \$250,000 in each fiscal year shall be distributed to the West Kentucky Regional Riverport Authority to support predevelopment archaeological activities. In addition, each existing public riverport shall receive \$750,000 in each fiscal year for construction and maintenance as authorized by KRS 65.520 and for eligible use as described in KRS 174.210(3), and no local match shall be required. Any remaining balance shall be distributed at the Transportation Cabinet Secretary's discretion and may be disbursed to riverport authorities for existing and developing riverports. Notwithstanding KRS 45.229, any portion of these funds that have not been expended by the end of fiscal year 2024-2025 shall not lapse and shall carry forward into fiscal year 2025-2026;*
 - \$750,000 for each public riverport authority
 - No local match required

FY 2026 KPRCM Funds

Available Funds: \$750,000.00

- Eligible projects as outlined in KRS 174.210(3) shall provide for new construction and major replacement or repair projects, including but not limited to improvement of docks, wharves, equipment, port buildings, storage facilities, roads and railroads to facilitate the flow of commerce through the port, other on-site improvements, and related professional services.
- Projects must be within the boundary of the public riverport authority, on facilities or equipment owned or leased by the public riverport authority, or facilities or equipment that will be owned by the public riverport authority upon completion of the project.
- Eligible projects shall not include routine operations, maintenance, or repair activities.
- Board members will vote on whether the submitted project meets the outlined criteria to be considered eligible for KPRCM funding.



Agenda:

Welcome and Introductions

Public Comment Period (2-3 minutes max)

Presentation of Minutes from February 28, 2025, meeting

Update on status of open and closed Kentucky Riverport Improvement (KRI) projects and Kentucky Public Riverport Construction and Maintenance (KPRCM) projects

Submission of and Discussion of Conflict-of-Interest Statements

Discussion of FY 26 Kentucky Riverport Improvement (KRI) program

Summary of applications received for FY 26 KRI funds

Review and Prioritization of application for FY 26 KRI applications

Discussion of FY 26 Kentucky Public Riverport Construction and Maintenance (KPRCM) program

Summary of applications received for FY 26 KPRCM funds

Review and Approval of applications for FY 26 KPRCM applications

Election of WTAB Chair and Vice Chair

Discussion of a potential Economic Impact of Kentucky's Ports and Waterways study

Discussion of next WTAB meeting

Adjournment

Applications for FY 2026 KPRCM

Available Funds: \$750,000.00 per port

Applicant	Project	Total Cost	KPRCM Requested
Eddyville	Mooring Dolphin Installation Project	\$2,015,075.00	\$750,000.00
Greenup-Boyd	Material Handling Replacement and Improvements	\$1,425,801.18	\$675,801.18
Henderson	Final Lump Sum Payment for New Electric Material Handler	2,042,046.35	\$750,000.00
Hickman-Fulton	Conveyor Upgrade & Replacement Project	\$750,000.00	\$750,000.00
Louisville	Gantry Superstructure Upgrade & Crane & Wharf Replacement	\$750,000.00	\$750,000.00
Owensboro	Two 25,000 lb. Forklifts	\$545,000.00	\$545,000.00
Owensboro	4x2 DOT Yard Truck	\$155,000.00	\$155,000.00
Owensboro	Triple Mast Forklift with Carton Clamp	\$85,200.00	\$50,000.00
Paducah-McCracken	Barge Cell Revitalization-Phase II	\$500,000.00	\$500,000.00
Paducah-McCracken	Fertilizer Conveyor System Replacement	\$250,000.00	\$250,000.00
Total		\$8,518,122.53	\$5,175,801.18

Eddyville Riverport and Industrial Development Authority
Mooring Dolphin Installation Project
Total Cost: \$2,015,075.00 – KPRCM Funds Requested: \$750,000.00

Using round one KPRCM funds, ERIDA will be constructing four mooring dolphins to facilitate the staging of additional barges. This proposed project would increase funding for the construction of the four mooring dolphins to allow the staging of more barges.



FY2026

Greenup Boyd County Riverport Authority
Material Handling Replacement & Improvement Project
Total Cost: \$1,425,801.18 – KPRCM Funds Requested: \$675,801.18



Using round one KPRCM funds, GBCRA purchased a skid steer and backhoe to enhance barge offloading capabilities and movement of materials through the riverport. They also made a down payment on a new material handler. This project would provide the final funding for the material handler.



FY2026

Henderson County Riverport Authority
Final Lump Sum Payment for New Electric Material Handler Project
Total Cost: \$2,042,046.35 – KPRCM Funds Requested: \$750,000.00



Using round one KPRCM funds, HCRA put a down payment toward the purchase of a new electric material handler. This proposed project would provide the final lump sum payment of the material handler.

FY2026

Hickman Fulton County Riverport Authority Conveyor Upgrade and Replacement Project

Total Cost: \$4,800,000.00 – KPRCM Funds Requested: \$750,000.00



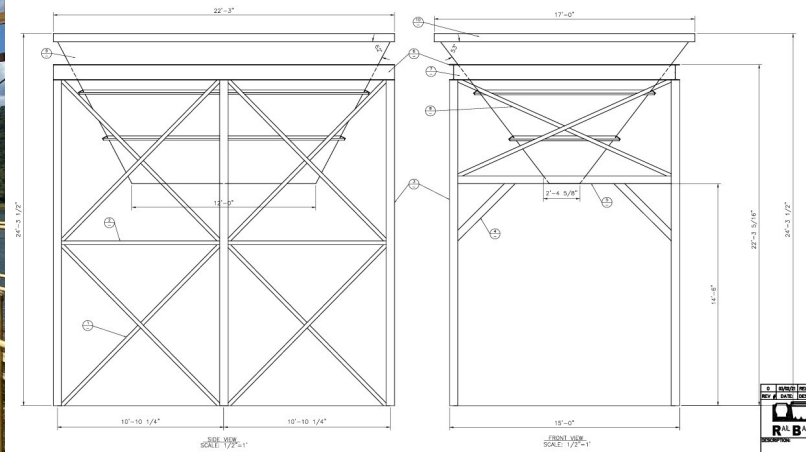
HFCRA was awarded a \$3.6M PIDP grant to replace their 40-year-old conveyor system. This project would supplement the PIDP and Riverport funds to complete the conveyor upgrade and replacement project.

FY2026

Louisville Jefferson County Riverport Authority
NE Gantry Superstructure Upgrade & Crane & Wharf Replacement Project
Total Cost: \$750,000.00 – KPRCM Funds Requested: \$750,000.00



Using round one KPRCM funds, LJCRA will refurbish the barge transloading crane systems. This project will retrofit the crane gantry structure to accept additional load capacity and replace the 30-year-old bucket and hopper system. These improvements will improve the ports service capabilities, efficiency, and operating profile.



FY2026

Owensboro Riverport Authority
4x2 DOT Yard Truck Project

Total Cost: \$155,000.00 – KPRCM Funds Requested: \$155,000.00



The proposed project would replace a yard truck from 2009 struggling with frequent breakdowns, rising maintenance costs, and operational inefficiencies with a modern 4x2 DOT Yard Truck. The new yard truck will improve cargo handling capacity and reduce equipment-related downtime.



FY2026

Owensboro Riverport Authority
5,000 Lb. Triple Mast Forklift with Carton Clamp Project
Total Cost: \$85,200.00 – KPRCM Funds Requested: \$50,000.00



The proposed project would purchase a new 5,000lb triple mast forklift with carton clamp to replace aging equipment with escalating maintenance costs. This project will reduce downtime, enhance productivity, and strengthen capacity to meet evolving client needs.



FY2026

Owensboro Riverport Authority
Two 25,000lb Forklifts Project
Total Cost: \$545,000.00 – KPRCM Funds Requested: \$545,000.00

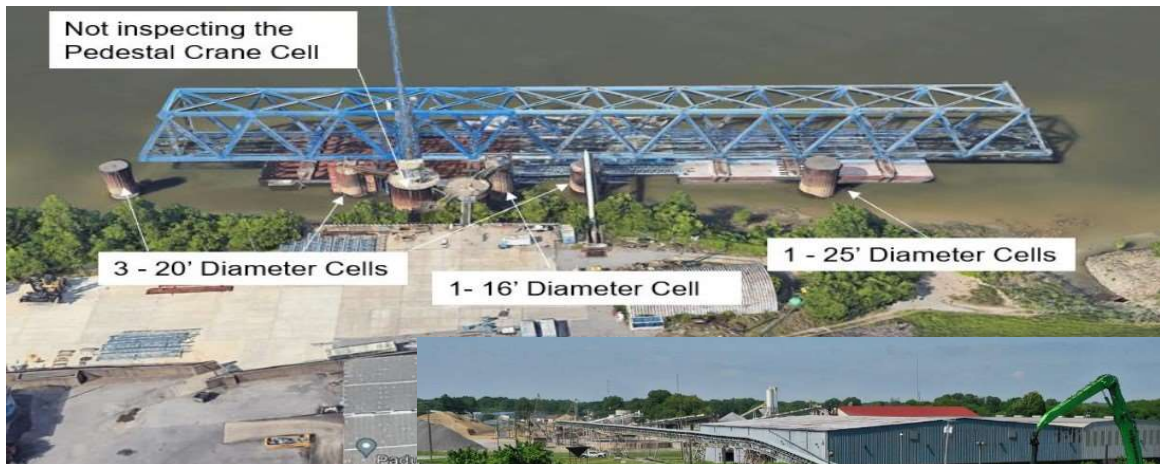


The proposed project would purchase two 25,000lb modern-fuel efficient forklifts to replace two aging forklifts from 2000 and 2008 each with over 20,000 hours. Upgrading to new forklifts will reduce downtime and maintenance expenses to ensure seamless operations.

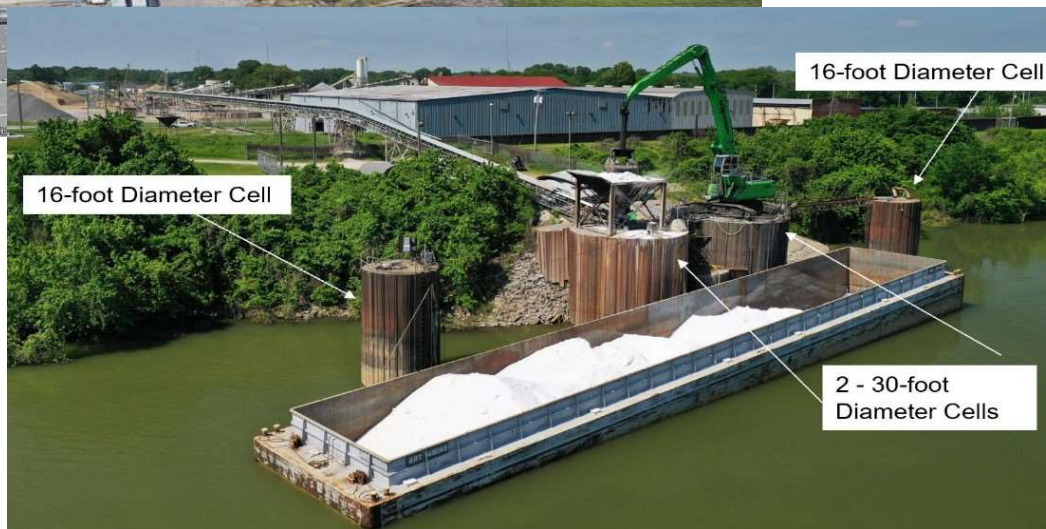


FY2026

Paducah McCracken County Riverport Authority
Barge Cell Revitalization-Phase II Project
Total Cost: \$500,000.00 – KPRCM Funds Requested: \$500,000.00



Using round one KPRCM funds, PMCRA performed inspection of the eight barge cells by engineers and divers. The remaining round one funds and this project would perform the necessary repairs to the mooring cells to return them to marine industry acceptable standards for barge mooring and material handling operations.



FY2026

Paducah-McCracken County Riverport Authority
Fertilizer Conveyor System Replacement Project
Total Cost: \$250,000.00 – KPRCM Funds Requested: \$250,000.00



The proposed project would remove the existing deteriorated conveyor system and reconfigure three 100' newly purchased 30" conveyors, install new bents, associated chutes and electrical power supply and controls. This project will ensure PMCRA can meet the barge unloading and delivery of more than 50,000 tons of fertilizer annually over the next 20-year period.





Agenda:

Welcome and Introductions

Public Comment Period (2-3 minutes max)

Presentation of Minutes from February 28, 2025, meeting

Update on status of open and closed Kentucky Riverport Improvement (KRI) projects and Kentucky Public Riverport Construction and Maintenance (KPRCM) projects

Submission of and Discussion of Conflict-of-Interest Statements

Discussion of FY 26 Kentucky Riverport Improvement (KRI) program

Summary of applications received for FY 26 KRI funds

Review and Prioritization of application for FY 26 KRI applications

Discussion of FY 26 Kentucky Public Riverport Construction and Maintenance (KPRCM) program

Summary of applications received for FY 26 KPRCM funds

Review and Approval of applications for FY 26 KPRCM applications

Election of WTAB Chair and Vice Chair

Discussion of a potential Economic Impact of Kentucky's Ports and Waterways study

Discussion of next WTAB meeting

Adjournment

Applications for FY 2026 KPRCM

Available Funds: \$750,000.00 per port

Applicant	Project	Total Cost	KPRCM Requested
Eddyville	Mooring Dolphin Installation Project	\$2,015,075.00	\$750,000.00
Greenup-Boyd	Material Handling Replacement and Improvements	\$1,425,801.18	\$675,801.18
Henderson	Final Lump Sum Payment for New Electric Material Handler	2,042,046.35	\$750,000.00
Hickman-Fulton	Conveyor Upgrade & Replacement Project	\$750,000.00	\$750,000.00
Louisville	Gantry Superstructure Upgrade & Crane & Wharf Replacement	\$750,000.00	\$750,000.00
Owensboro	Two 25,000 lb. Forklifts	\$545,000.00	\$545,000.00
Owensboro	4x2 DOT Yard Truck	\$155,000.00	\$155,000.00
Owensboro	Triple Mast Forklift with Carton Clamp	\$85,200.00	\$50,000.00
Paducah-McCracken	Barge Cell Revitalization-Phase II	\$500,000.00	\$500,000.00
Paducah-McCracken	Fertilizer Conveyor System Replacement	\$250,000.00	\$250,000.00
Total		\$8,518,122.53	\$5,175,801.18

Eligible projects as outlined in KRS 174.210(3) shall provide for new construction and major replacement or repair projects, including but not limited to improvement of docks, wharves, equipment, port buildings, storage facilities, roads and railroads to facilitate the flow of commerce through the port, other on-site improvements, and related professional services.





Agenda:

Welcome and Introductions

Public Comment Period (2-3 minutes max)

Presentation of Minutes from February 28, 2025, meeting

Update on status of open and closed Kentucky Riverport Improvement (KRI) projects and Kentucky Public Riverport Construction and Maintenance (KPRCM) projects

Submission of and Discussion of Conflict-of-Interest Statements

Discussion of FY 26 Kentucky Riverport Improvement (KRI) program

Summary of applications received for FY 26 KRI funds

Review and Prioritization of application for FY 26 KRI applications

Discussion of FY 26 Kentucky Public Riverport Construction and Maintenance (KPRCM) program

Summary of applications received for FY 26 KPRCM funds

Review and Approval of applications for FY 26 KPRCM applications

Election of WTAB Chair and Vice Chair

Discussion of a potential Economic Impact of Kentucky's Ports and Waterways study

Discussion of next WTAB meeting

Adjournment



Agenda:

Welcome and Introductions

Public Comment Period (2-3 minutes max)

Presentation of Minutes from February 28, 2025, meeting

Update on status of open and closed Kentucky Riverport Improvement (KRI) projects and Kentucky Public Riverport Construction and Maintenance (KPRCM) projects

Submission of and Discussion of Conflict-of-Interest Statements

Discussion of FY 26 Kentucky Riverport Improvement (KRI) program

Summary of applications received for FY 26 KRI funds

Review and Prioritization of application for FY 26 KRI applications

Discussion of FY 26 Kentucky Public Riverport Construction and Maintenance (KPRCM) program

Summary of applications received for FY 26 KPRCM funds

Review and Approval of applications for FY 26 KPRCM applications

Election of WTAB Chair and Vice Chair

Discussion of a potential Economic Impact of Kentucky's Ports and Waterways study

Discussion of next WTAB meeting

Adjournment



Agenda:

Welcome and Introductions

Public Comment Period (2-3 minutes max)

Presentation of Minutes from February 28, 2025, meeting

Update on status of open and closed Kentucky Riverport Improvement (KRI) projects and Kentucky Public Riverport Construction and Maintenance (KPRCM) projects

Submission of and Discussion of Conflict-of-Interest Statements

Discussion of FY 26 Kentucky Riverport Improvement (KRI) program

Summary of applications received for FY 26 KRI funds

Review and Prioritization of application for FY 26 KRI applications

Discussion of FY 26 Kentucky Public Riverport Construction and Maintenance (KPRCM) program

Summary of applications received for FY 26 KPRCM funds

Review and Approval of applications for FY 26 KPRCM applications

Election of WTAB Chair and Vice Chair

Discussion of a potential Economic Impact of Kentucky's Ports and Waterways study

Discussion of next WTAB meeting

Adjournment



Agenda:

Welcome and Introductions

Public Comment Period (2-3 minutes max)

Presentation of Minutes from February 28, 2025, meeting

Update on status of open and closed Kentucky Riverport Improvement (KRI) projects and Kentucky Public Riverport Construction and Maintenance (KPRCM) projects

Submission of and Discussion of Conflict-of-Interest Statements

Discussion of FY 26 Kentucky Riverport Improvement (KRI) program

Summary of applications received for FY 26 KRI funds

Review and Prioritization of application for FY 26 KRI applications

Discussion of FY 26 Kentucky Public Riverport Construction and Maintenance (KPRCM) program

Summary of applications received for FY 26 KPRCM funds

Review and Approval of applications for FY 26 KPRCM applications

Election of WTAB Chair and Vice Chair

Discussion of a potential Economic Impact of Kentucky's Ports and Waterways study

Discussion of next WTAB meeting

Adjournment



@KYTC



@kytc120



@KYtransportation



@KYtransportation

transportation.ky.gov

Thank you for your attendance and participation...

Jeremy Edgeworth
Freight, Rail, & Waterways
Division of Planning - Modal Programs
Kentucky Transportation Cabinet
200 Mero Street, Frankfort, KY 40622
e: Jeremy.Edgeworth@ky.gov
o: (502) 782.5095