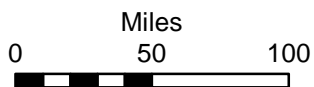
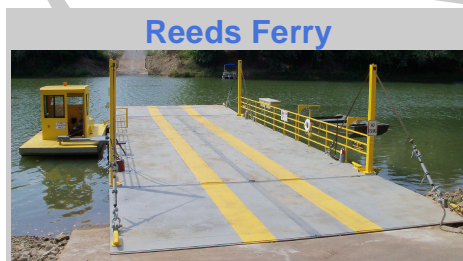
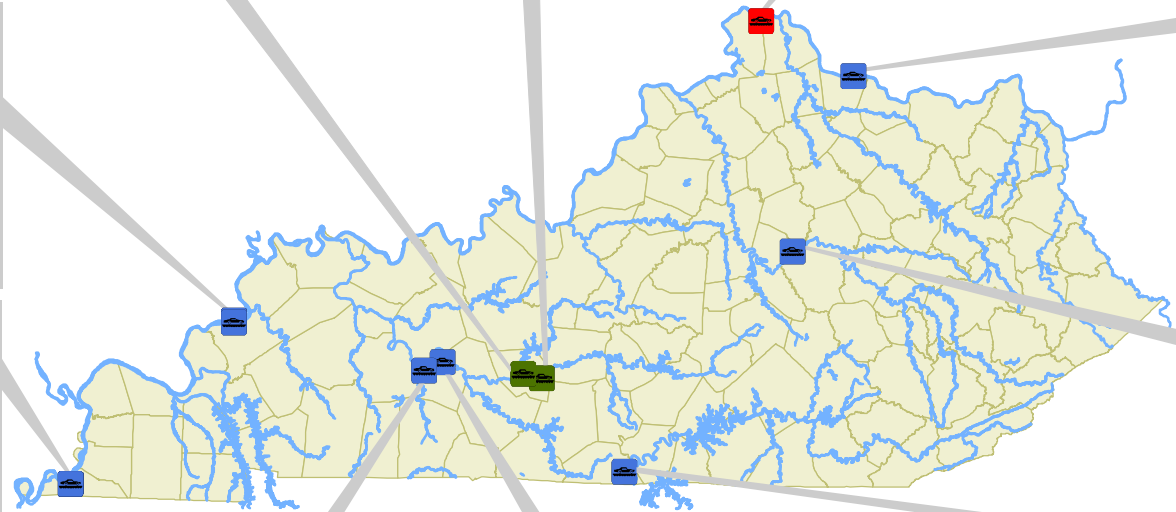


Ferryboats in Kentucky



Legend

	Federally Funded
	Privately Operated
	State Funded
	Rivers



Updated: July 2013

Ferry	Crosses	County		Connects		Fee	Schedule				Contact
		From:	To:	From:	To:		May-Oct	M-F	Saturday	Sunday	
Anderson Ferry	Ohio River	Boone Co., KY	Hamilton Co., OH	KY 8	US 50	\$5 / .50¢	May-Oct Nov-April	6:00am - 9:45pm 6:00am - 8:00pm	7:00am - 9:45pm 7:00am - 8:00pm	9:00am - 9:45pm 10:00am - 8:00pm	859-586-5007
Augusta Ferry	Ohio River	Bracken Co., KY	Brown Co., OH	KY 8	US 52	\$5 / Free	Yearly	8:00am - 8:00pm	8:00am - 8:00pm	8:00am - 8:00pm	606-756-3291
Cave in Rock Ferry	Ohio River	Crittenden Co., KY	Hardin Co., IL	KY 91	IL 1	Free	Yearly	6:00am - 9:30pm	6:00am - 9:30pm	6:00am - 9:30pm	618-289-4599
Dorena-Hickman Ferry	Mississippi River	Fulton Co., KY	Mississippi Co., MO	KY 1354 / KY 94	MO 77	\$14 / \$1	Summer Winter	7:00am - 6:30pm 7:00am - 5:30pm	7:00am - 6:30pm 7:00am - 5:30pm	7:00am - 6:30pm 7:00am - 5:30pm	731-693-0210
Green River Ferry	Green River	Edmonson Co., KY	Edmonson Co., KY	KY 255 / KY 70	KY 1352	Free/No	Yearly	6:00am - 9:55pm	6:00am - 9:55pm	6:00am - 9:55pm	270-758-2166
Houchin Ferry	Green River	Edmonson Co., KY	Edmonson Co., KY	Houchin Ferry Road (KY 259)	Ollie Road (KY 728)	Free	March-Nov Dec-Feb	Closed Closed	Closed Closed	Closed Closed	270-758-2166
Reeds Ferry	Green River	Butler Co., KY	Butler Co., KY	KY 269	KY 269	Free	Yearly	8:00am - 8:00pm	8:00am - 8:00pm	8:00am - 8:00pm	270-526-4123
Rochester Ferry	Green River	Butler Co., KY	Ohio Co., KY	KY 369	KY 369	Free	Yearly	8:00am - 8:00pm	8:00am - 8:00pm	8:00am - 8:00pm	270-526-4123
Turkey Neck Bend Ferry	Cumberland River	Monroe Co., KY	Monroe Co., KY	KY 214	KY 214	Free	Yearly	24 hours	24 hours	24 hours	270-991-0543
Valley View Ferry	Kentucky River	Fayette and Jessamine Co., KY	Madison Co., KY	KY 169	KY 169	Free	Yearly	6:00am - 6:00pm	6:00am - 6:00pm	6:00am - 6:00pm	859-258-3611

ALWAYS CONTACT FERRY IN ADVANCE TO ENSURE IT IS OPERATING-FERRYBOAT OPERATIONS MAY BE CLOSED DUE TO WEATHER, HIGH OR LOW WATER, HIGH WINDS, MAINTENANCE, REFUELING, ETC.