



Water Transportation Advisory Board

Friday, February 28, 2025
10:00 AM to 12:00 PM ET



Agenda:

Welcome and Introductions

Public Comment Period (2-3 minutes max)

Presentation of Minutes from December 4, 2024, meeting

Update on status of open and closed Kentucky Riverport Improvement (KRI) projects

Update on status of open and closed Kentucky Public Riverport Construction and Maintenance (KPRCM) projects

Submission of and Discussion of Conflict-of-Interest Statements

Discussion of FY 25 Kentucky Public Riverport Construction and Maintenance (KPRCM) program

Summary of applications received for FY 25 KPRCM funds-Final Call

Review and Prioritization of application for FY 25 KPRCM applications-Final Call

Discussion of next WTAB meeting

Discussion of a potential Economic Impact of Kentucky's Ports and Waterways study

Adjournment



Agenda:

Welcome and Introductions

Public Comment Period (2-3 minutes max)

Presentation of Minutes from December 4, 2024, meeting

Update on status of open and closed Kentucky Riverport Improvement (KRI) projects

Update on status of open and closed Kentucky Public Riverport Construction and Maintenance (KPRCM) projects

Submission of and Discussion of Conflict-of-Interest Statements

Discussion of FY 25 Kentucky Public Riverport Construction and Maintenance (KPRCM) program

Summary of applications received for FY 25 KPRCM funds-Final Call

Review and Prioritization of application for FY 25 KPRCM applications-Final Call

Discussion of next WTAB meeting

Discussion of a potential Economic Impact of Kentucky's Ports and Waterways study

Adjournment



Agenda:

Welcome and Introductions

Public Comment Period (2-3 minutes max)

Presentation of Minutes from December 4, 2024, meeting

Update on status of open and closed Kentucky Riverport Improvement (KRI) projects

Update on status of open and closed Kentucky Public Riverport Construction and Maintenance (KPRCM) projects

Submission of and Discussion of Conflict-of-Interest Statements

Discussion of FY 25 Kentucky Public Riverport Construction and Maintenance (KPRCM) program

Summary of applications received for FY 25 KPRCM funds-Final Call

Review and Prioritization of application for FY 25 KPRCM applications-Final Call

Discussion of next WTAB meeting

Discussion of a potential Economic Impact of Kentucky's Ports and Waterways study

Adjournment

DRAFT

Water Transportation Advisory Board (WTAB)
December 4, 2024, Meeting Minutes

Approved by WTAB (date): _____

The meeting of the Water Transportation Advisory Board (WTAB) was called to order at 1:03 PM on December 4, 2024, held online.

The WTAB members in attendance were:

Brian Wright, Chair	Amanda Davenport
Billy Ray Coursey, Vice Chair	Wayne Cassidy
Tim Cahill	Miguel Zamora

Also, in attendance were:

Jeremy Edgeworth, KYTC	Eric Patton, Greenup County Fiscal Court
Keith Hieneman, Greenup Boyd Riverport Authority	Jim Garrett, Paducah Riverport
David Rambo, Western Kentucky Riverport	Greg Curlin, Hickman Riverport
Sean Miller, HMB Engineers	Tyler McHugh, Maysville Mason County Riverport
Chad Dorsey, MARAD	Ben Weithman, Henderson Riverport
Cheryl Chino, HDR	Christine Russell, Northern KY Port
Jack Mundy, GEO Consultants	Jennifer Kirchner, KBT
Jerry Pace, West Kentucky Regional Riverport	Mikael Pelfrey, KYTC
Jake Rice, KYTC	

Welcome and Introductions:

The Chair welcomed all in attendance and all attendees introduced themselves.

Public Comment Period:

The Chair invited all attendees to make comments. No public comments were made.

Presentation of Minutes from June 24, 2024

The minutes of the June 24, 2024, meeting were presented and subsequently unanimously approved on motion of Miguel Zamora, seconded by Amanda Davenport.

Update on Status of Open and Closed KRI projects

Jeremy Edgeworth presented a PowerPoint presentation of open and closed KRI projects and invited representatives from the Riverports to discuss the status of their projects.

- Amanda Davenport (Eddyville Riverport)-Caterpillar 330 Hydraulic Excavator Project-Project purchased new CAT 330 Excavator to expand operations a redundancy to Sennebogen material handler. Excavator has been delivered; project has been closed.
- Ben Weithman (Henderson Riverport)-Automated Truck Scale Project-Project installed new automatic truck scales that provide more efficient movement of trucks. Project also includes adding access drives to divert traffic increasing efficiency. Work is completed; KYTC inspection completed, administrative closeout in progress.
- Brian Wright (Owensboro Riverport)-10,000lbs Forklift Project-Project would purchase a new 10,000lbs forklift to unload metals receive by barge or railcar. Forklift was ordered August 2023; delivery is delayed until late December 2024 due to supplier issues.
- Brian Wright (Owensboro Riverport)-25,000lbs Forklift Project-Project would purchase a new 25,000lbs forklift to handle metals for placing in storage and loading for outbound. Forklift was ordered August 2023; delivery is delayed until late December 2024 due to supplier issues.

December 4, 2024 Minutes



Agenda:

Welcome and Introductions

Public Comment Period (2-3 minutes max)

Presentation of Minutes from December 4, 2024, meeting

Update on status of open and closed Kentucky Riverport Improvement (KRI) projects

Update on status of open and closed Kentucky Public Riverport Construction and Maintenance (KPRCM) projects

Submission of and Discussion of Conflict-of-Interest Statements

Discussion of FY 25 Kentucky Public Riverport Construction and Maintenance (KPRCM) program

Summary of applications received for FY 25 KPRCM funds-Final Call

Review and Prioritization of application for FY 25 KPRCM applications-Final Call

Discussion of next WTAB meeting

Discussion of a potential Economic Impact of Kentucky's Ports and Waterways study

Adjournment

Henderson County Riverport Authority Automated Truck Scale Project

Total Cost: \$244,913.63 – Awarded: \$122,000.00

Status: **Work completed, KYTC Inspected, Administrative Closeout in progress**

Project installed new automatic scale at a new location that provides more efficient movement of trucks. Project also includes adding an access drive to divert traffic from busy intersection and sections of current access drives widened to allow two lanes of traffic, increasing efficiency of the operation and reduced idle times.



Owensboro Riverport Authority 10,000lb Forklift Project

Total Cost: \$78,950.00 – Awarded: \$16,169.57

Status: **Forklift delivered; KYTC Inspected, Administrative Closeout in progress**



Project purchased a new 10,000 lb. forklift to unload metals (aluminum and steel) received by barge or railcar. New forklift provides improved emissions, improve fuel consumption, improved safety standards, and savings on maintenance.



FY2024

Owensboro Riverport Authority 25,000lb Forklift Project

Total Cost: \$231,719.20 – Awarded: \$115,859.60

Status: **Forklift delivered; KYTC Inspected, Administrative Closeout in progress**



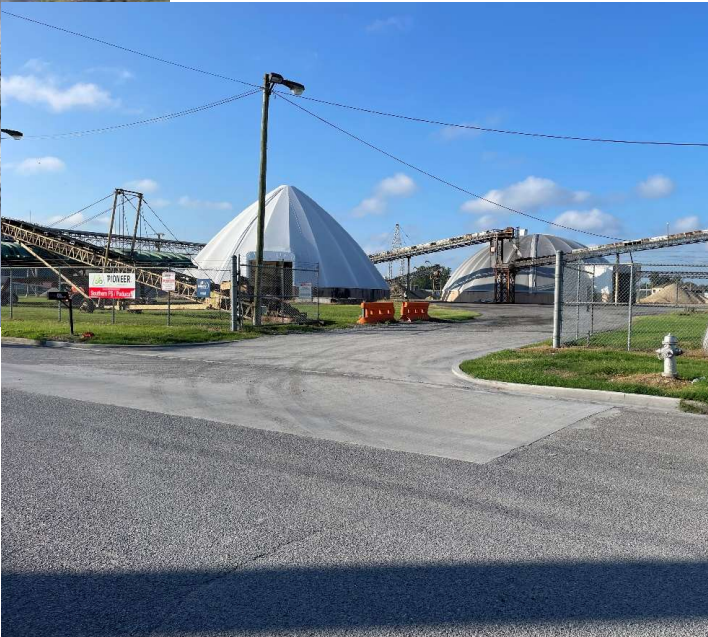
Project purchased new 25,000 lb. forklift to handle metals (aluminum and steel) for both placing in storage and loading for outbound. New forklift improves fuel consumption, improve safety standards, and savings on maintenance. New forklift replaced 2014 model with limited availability of replacement parts.



Paducah-McCracken County Riverport Authority
4th Street Concrete Aprons Project
Total Cost: \$61,020.00 – Awarded: \$30,510.00

Status: **Work completed, KYTC Inspected, Administrative Closeout in progress**

Project replaced two 1970-1980s vintage entranceways and aprons. Both entranceways have far exceeded their life expectancy, are extremely deteriorated and need to be replaced with hardened concrete and rebar to support increasing truck shipment activities. Replacement aprons will provide increased access into the bulk commodity storage yard and radioactive materials license designated yard areas.



Henderson County Riverport Authority
12,000 lbs. Forklift Project
Total Cost: \$96,900.00 – Awarded: \$27,413.00
Status: **Forklift ordered; delivery scheduled for late May 2025.**



Project will replace an older 11,000 lbs. forklift near the end of its useful life with a new Taylor GTR-120 or equivalent. Replacing forklift fleet will ensure enough units to accommodate customers needs.



Henderson County Riverport Authority
15,500 lbs. Forklift Project
Total Cost: \$119,200.00 – Awarded: \$95,360.00
Status: **Forklift ordered; delivery scheduled for late March 2025.**



Project will replace an older 15,500 lbs. forklift near the end of its useful life with a new Taylor GT-155 or equivalent. Replacing forklift fleet will ensure enough units to accommodate customers needs.



Hickman Fulton County Riverport Authority
Dock Dredging Project
Total Cost: \$81,720.00 – Awarded: \$65,376.00

Status: **Dredging completed in August, Administrative Closeout in progress.**

Project dredged a 700 ft. by 30 ft. area around the docks and remove approximately 15,000 cubic yards of material to maintain normal business operations.



Hickman Fulton County Riverport Authority
Spreader Bar and Coil Hooks Project
Total Cost: \$24,500.00 – Awarded: \$19,600.00
Status: Bid process completed, vendor selected.



Project will design and construct new spreader bar and coil hooks for unloading different size wire coils from barges. Current equipment is wearing out and is not compatible with the different sizes of wire coils handled by the riverport.

Louisville Jefferson County Riverport Authority
Caterpillar 255 Skid Steer Project

Total Cost: \$81,508.00 – Awarded: \$65,207.00

Status: Procure from MA in March 2025 when current lease ends.

Project will replace leased skid steer with 2025 hours with a new CAT 255 on statewide master agreement. Skid steer is used at port to transload bulk materials from barges and rail cars. Skid steers clean barges carrying bulk materials and recover spillage incurred in transload operations.



FY2025

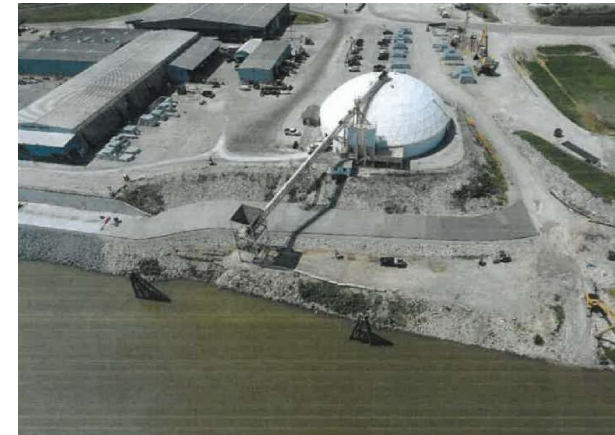
Owensboro Riverport Authority Low Road Loadout Project

Total Cost: \$305,497.00 – Awarded: \$152,749.00

Status: **Construction complete, awaiting inspection when water levels drop.**



Project will stabilize and concrete the bulk loadout dock. Area is subject to soft soils and saturated ground. When loading materials, trucks dumping in this area are getting stuck and contaminating material being staged. Project would allow for sufficient drainage and provide concrete stabilization for operations.



Paducah McCracken County Riverport Authority
48-foot Flatbed Trailer Project
Total Cost: \$35,300.00 –Awarded: \$28,240.00
Status: **Trailer delivered, KYTC inspection next week.**



Project purchased a 48-foot, spring slider, steel chassis flatbed trailer to replace rented trailer. Trailer is used to distribute supersacks arriving by barge into multiple port owned warehouses before distribution to the region. Purchase of trailer would create redundancy by avoiding days when a flatbed trailer is not available to rent.

Paducah McCracken County Riverport Authority
Bobcat S650 Skid Steer Loader Project
Total Cost: \$57,569.00 – KRI Funds Awarded: \$46,055.00
Status: **Skid Steer delivered, KYTC inspection next week.**

Project replaced existing 2015 Bobcat near the end of its useful life with a new Bobcat S650 utilizing a statewide master agreement. Skid Steer is utilized with discharging operations at bulk commodity river berth.



FY2025



Agenda:

Welcome and Introductions

Public Comment Period (2-3 minutes max)

Presentation of Minutes from December 4, 2024, meeting

Update on status of open and closed Kentucky Riverport Improvement (KRI) projects

Update on status of open and closed Kentucky Public Riverport Construction and Maintenance (KPRCM) projects

Submission of and Discussion of Conflict-of-Interest Statements

Discussion of FY 25 Kentucky Public Riverport Construction and Maintenance (KPRCM) program

Summary of applications received for FY 25 KPRCM funds-Final Call

Review and Prioritization of application for FY 25 KPRCM applications-Final Call

Discussion of next WTAB meeting

Discussion of a potential Economic Impact of Kentucky's Ports and Waterways study

Adjournment

Eddyville Riverport and Industrial Development Authority Dolphin Installation Project

Total Cost: \$1,498,905.00 – Awarded: \$750,000.00

Status: **Engineering & design in process, bid out for construction in early spring**

Project would install three mooring dolphins to facilitate the staging of additional barges. The mooring dolphins will provide efficient access for the movement of barge traffic without delaying current operations at the port.



Greenup Boyd County Riverport Authority
Material Handling Replacement & Improvement Project
Total Cost: \$1,425,801.18 – Awarded: \$750,000.00
Status: **Have purchase orders on all equipment.**



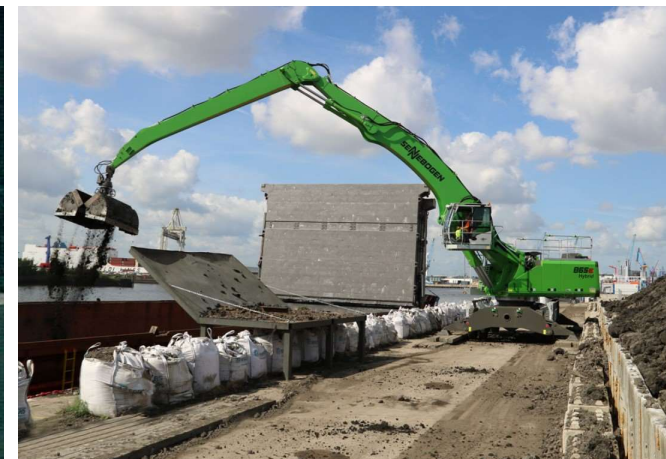
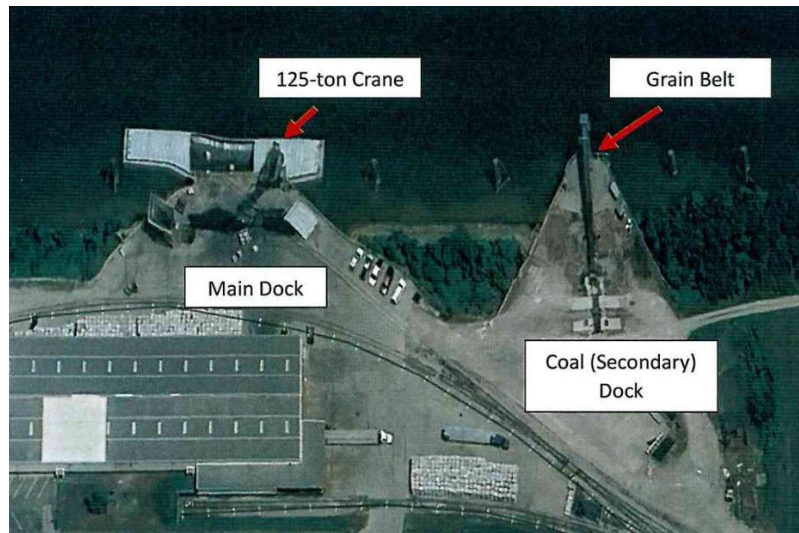
Project will purchase a new material handler, skid steer and backhoe to enhance barge offloading capabilities and movement of materials through the riverport.



Henderson County Riverport Authority
Electric Material Handler Project
Total Cost: \$2,000,190.00 – Awarded: \$750,000.00
Status: **Material handler ordered, expected delivery October 2025.**

Secondary Dock/Grain Belt

Project will purchase a new material handler to replace the mobile conveyor system at secondary dock slated for removal. Material handler would facilitate loading and unloading of bulk fertilizer, aggregates, grain and scrap. Would also provide backup to existing 40-year-old 125-ton cable crane.



Hickman Fulton County Riverport Authority
Mooring Dock Cell Repair Project
Total Cost: \$550,000.00 – Awarded: \$481,900.00

Status: Conveyor Mooring Cell repairs have been bid out; work will begin in Spring.

Project would make long term repairs to Mooring Cells 2, 3, and 4. Temporary patches and repairs have been made, but full circumference bands are needed for protection and stability and to prevent loss of internal ballast stone.



FY2025

Hickman Fulton County Riverport Authority
Volvo L90H2 Wheeled Loader Project
Total Cost: \$305,100.00 – Awarded: \$268,100.00
Status: **Loader has been delivered, KYTC inspection next week.**



Project replaced wheel loader from 2003 that has become increasing difficult to maintain due to its age. New Volvo L90H2 Wheeled Loader would be used to load and unload bulk materials to truck once unloaded from barges. Loader would be purchased from Statewide Master Agreement.



Louisville Jefferson County Riverport Authority
Gantry Crane Rehab Project

Total Cost: \$700,000.00 – Awarded: \$700,000.00

Status: Procurement completed, finalizing contract with vendor.

Project will replace 35-year-old gantry cranes electronic power, command control, cab, and braking systems. Rehab project would make river transportation more reliable for customers, improve safety and make river dock's business sustainable.



FY2025

Maysville Mason County Riverport Authority
Riverport Equipment Purchase Project
Total Cost: \$622,522.00 – Awarded: \$622,522.00

Status: Putting together bid packet for stacker/conveyors. Checking on using MA for loader.

Project will purchase Triple Stack Portable Transfer Conveyor, Large Wheel Loader, and Radial Stacker to allow Riverport to continue current operations consisting of loading coal ash from the adjacent rail line facility. Also allow expansion of operations to include agricultural transport.



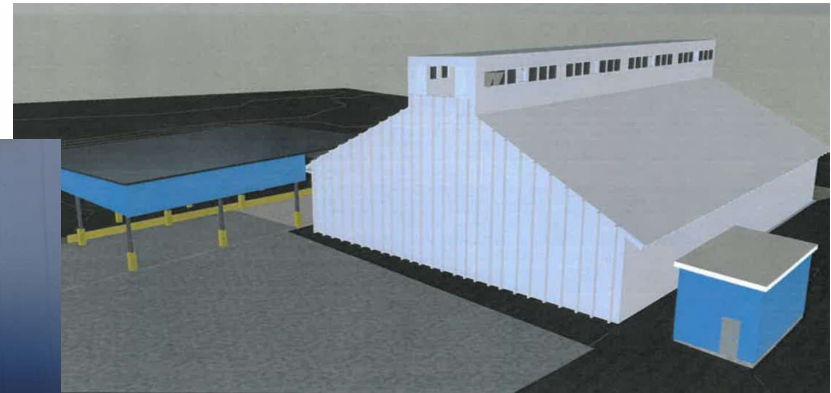
Owensboro Riverport Authority Warehouse 10 Project

Total Cost: \$1,063,954.00 – Awarded: \$750,000.00

Status: **MCC Building and transformer pad poured, concrete forming of dock ongoing.**

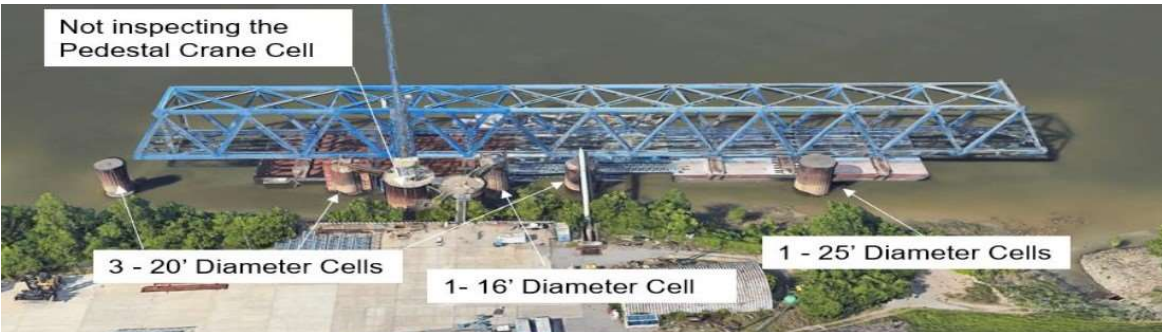


This project will install new electric and build an overhang dock area for loading out during all conditions prior to being able to lease out facility for bulk storage.



Paducah McCracken County Riverport Authority
Barge Cell Revitalization Project
Total Cost: \$750,000.00 – Awarded: \$750,000.00

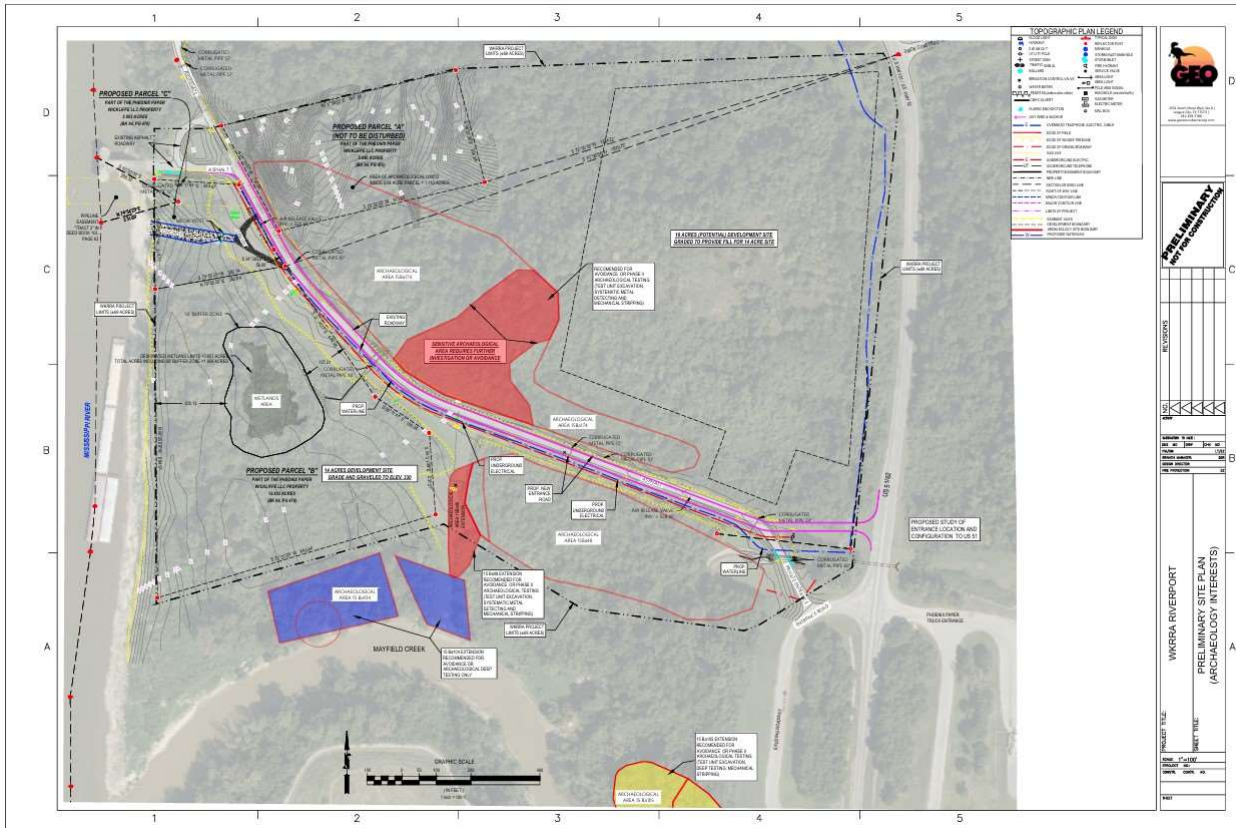
Status: **Inspection completed, report finalized, developing scope of work for repairs.**



Project involves inspection of nine barge cells by engineers and divers and then begin making repairs to the most needed barge cells. Repairs would involve patches or full bands and replenishing cell aggregate material.



West Kentucky Regional Riverport Authority
 Archaeological Excavation of Fort Jefferson Project
 Total Cost: \$250,988.00 – Awarded: \$250,000.00
 Status: **Going through process to procure archaeology services.**



WKRRRA is proposing to develop a new 19-acre inland riverport on the location of the former Fort Jefferson. Project would document and recover cultural resources in the proposed Fort Jefferson areas to comply with Section 106 of the National Historic Preservation Act. Once complete, WKRRRA can begin development of the riverport.



Agenda:

Welcome and Introductions

Public Comment Period (2-3 minutes max)

Presentation of Minutes from December 4, 2024, meeting

Update on status of open and closed Kentucky Riverport Improvement (KRI) projects

Update on status of open and closed Kentucky Public Riverport Construction and Maintenance (KPRCM) projects

Submission of and Discussion of Conflict-of-Interest Statements

Discussion of FY 25 Kentucky Public Riverport Construction and Maintenance (KPRCM) program

Summary of applications received for FY 25 KPRCM funds-Final Call

Review and Prioritization of application for FY 25 KPRCM applications-Final Call

Discussion of next WTAB meeting

Discussion of a potential Economic Impact of Kentucky's Ports and Waterways study

Adjournment

Conflicts of Interest

DISCLOSURE OF CONFLICT OF INTEREST STATEMENT

TO: WATER TRANSPORTATION ADVISORY BOARD

FROM: _____
Name Position

Agency, Board, or Commission Telephone

MEMBER OF BOARD OR COMMISSION COMPLETES

1. Executive Order 2008-454 requires members appointed to policy making and regulatory boards or commissions to disclose in writing any interest he or she possesses or acquires that might reasonably tend to create a conflict with the public interest. Please be advised that I have the following business, financial or personal interest which may create an actual or perceived conflict:

2. The following matter is before this board or commission and is related to the above interest:

3. I have the following duties or responsibilities to the board or commission that are related to the above interest:

4. a. A decision on this matter will take place, or took place, on _____
(mm/dd/yyyy) Yes No
b. I participated, or plan to participate, in the decision making process on this matter.
I did/will not participate in the decision making process on this matter.

5. I request advice from the board or commission regarding this matter.

Date Signature

BOARD OR COMMISSION DETERMINATION

____ 1. The facts disclosed do not indicate a conflict of interest exists.

____ 2. The facts disclosed indicated a conflict of interest because:

____ 3. The board or commission action(s):

Date Chair





Agenda:

Welcome and Introductions

Public Comment Period (2-3 minutes max)

Presentation of Minutes from December 4, 2024, meeting

Update on status of open and closed Kentucky Riverport Improvement (KRI) projects

Update on status of open and closed Kentucky Public Riverport Construction and Maintenance (KPRCM) projects

Submission of and Discussion of Conflict-of-Interest Statements

Discussion of FY 25 Kentucky Public Riverport Construction and Maintenance (KPRCM) program

Summary of applications received for FY 25 KPRCM funds-Final Call

Review and Prioritization of application for FY 25 KPRCM applications-Final Call

Discussion of next WTAB meeting

Discussion of a potential Economic Impact of Kentucky's Ports and Waterways study

Adjournment

FY 2025 KPRCM Funds

Available Funds: \$1,427,478.00

- *HB 1, (225) \$7,500,000 in each fiscal year to the General Administration and Support budget unit in the Kentucky Transportation Cabinet to improve public riverports within Kentucky. Of this amount, \$250,000 in each fiscal year shall be distributed to the West Kentucky Regional Riverport Authority to support predevelopment archaeological activities. In addition, each existing public riverport shall receive \$750,000 in each fiscal year for construction and maintenance as authorized by KRS 65.520 and for eligible use as described in KRS 174.210(3), and no local match shall be required. Any remaining balance shall be distributed at the Transportation Cabinet Secretary's discretion and may be disbursed to riverport authorities for existing and developing riverports. Notwithstanding KRS 45.229, any portion of these funds that have not been expended by the end of fiscal year 2024-2025 shall not lapse and shall carry forward into fiscal year 2025-2026;*
 - \$750,000 for each public riverport authority
 - No local match required

FY 2025 KPRCM Funds

Available Funds: \$1,427,478.00

- Eligible projects as outlined in KRS 174.210(3) shall provide for new construction and major replacement or repair projects, including but not limited to improvement of docks, wharves, equipment, port buildings, storage facilities, roads and railroads to facilitate the flow of commerce through the port, other on-site improvements, and related professional services.
- Projects must be within the boundary of the public riverport authority, on facilities or equipment owned or leased by the public riverport authority, or facilities or equipment that will be owned by the public riverport authority upon completion of the project.
- Eligible projects shall not include routine operations, maintenance, or repair activities.
- Board members will vote on whether the submitted project meets the outlined criteria to be considered eligible for KPRCM funding.



Agenda:

Welcome and Introductions

Public Comment Period (2-3 minutes max)

Presentation of Minutes from December 4, 2024, meeting

Update on status of open and closed Kentucky Riverport Improvement (KRI) projects

Update on status of open and closed Kentucky Public Riverport Construction and Maintenance (KPRCM) projects

Submission of and Discussion of Conflict-of-Interest Statements

Discussion of FY 25 Kentucky Public Riverport Construction and Maintenance (KPRCM) program

Summary of applications received for FY 25 KPRCM funds-Final Call

Review and Prioritization of application for FY 25 KPRCM applications-Final Call

Discussion of next WTAB meeting

Discussion of a potential Economic Impact of Kentucky's Ports and Waterways study

Adjournment

Applications for FY 2025 KPRCM-Final

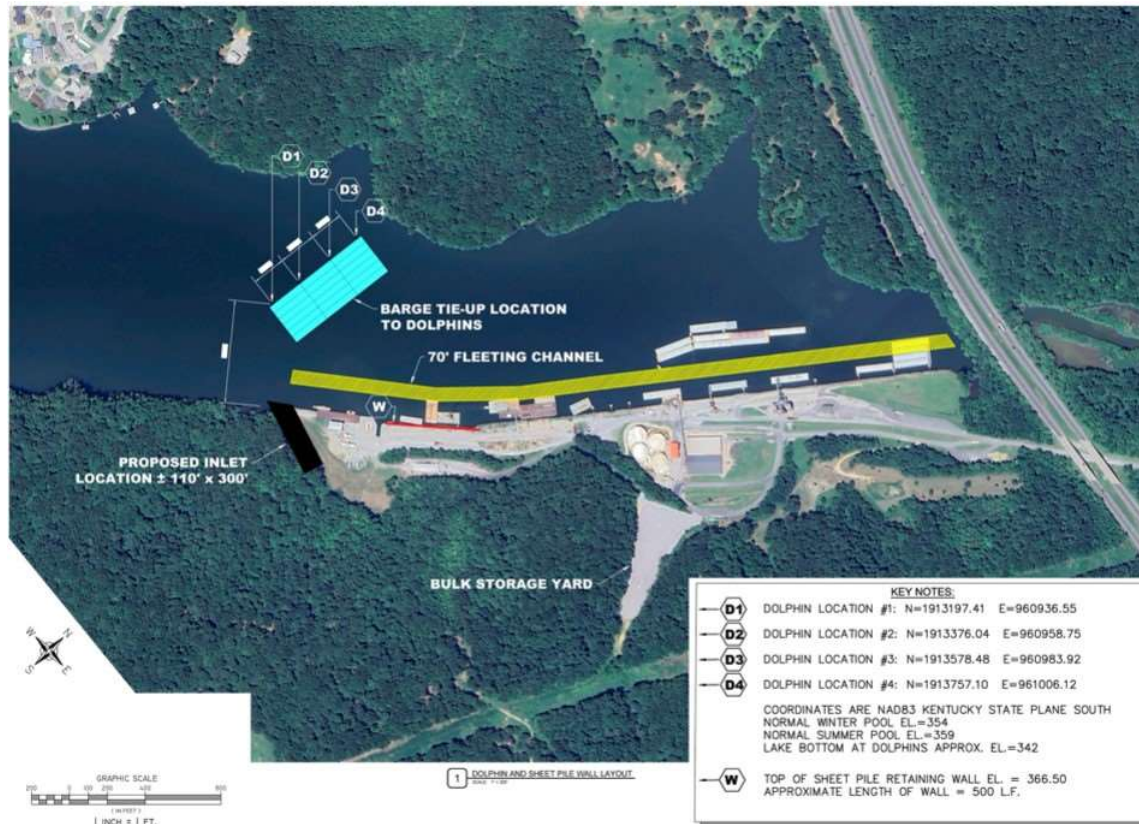
Available Funds: \$1,427,478.00

Applicant	Project	Total Cost	KPRCM Requested
Eddyville	Mooring Dolphin Installation Project	\$515,075.00	\$515,075.00
Henderson	Final Lump Sum Payment for New Electric Material Handler	\$2,042,046.35	\$338,046.00
Henderson	Lump Sum Payment for New Material Handler	\$2,042,046.35	\$204,000.00
Hickman-Fulton	Crane Aggregate Clamshell Bucket	\$84,895.00	\$84,895.00
Hickman-Fulton	Grain Truck Conveyor Upgrade	\$175,000.00	\$175,000.00
Owensboro	20-ton Hook /Rotator	\$35,815.00	\$35,815.00
Owensboro	5,000 Lb Forklift & Clamp	\$77,708.00	\$77,708.00
Owensboro	7-ton C-Hook Rotator	\$76,993.00	\$76,993.00
Owensboro	Resurfacing and Exit Road Extension	\$381,743.00	\$381,743.00
Paducah-McCracken	Bulk Yard Access Road	\$167,063.30	\$167,063.00
Paducah-McCracken	General Cargo Facility-Concrete Travelway	\$256,750.00	\$256,750.00
Paducah-McCracken	Sennebogen Bucket Replacement	\$61,875.00	\$61,875.00
	Total	\$3,874,963.65	\$2,374,963.00

Eddyville Riverport and Industrial Development Authority Mooring Dolphin Installation Project

Total Cost: \$515,075.00 – KPRCM Funds Requested: \$515,075.00

Using round one KPRCM funds, ERIDA will be constructing three mooring dolphins to facilitate the staging of additional barges. This proposed project would fund the construction of a fourth mooring dolphin to allow the staging of even more barges.



Henderson County Riverport Authority
Final Lump Sum Payment for New Electric Material Handler Project
Total Cost: \$2,042,046.35 – KPRCM Funds Requested: \$338,046.00

Using round one KPRCM funds, HCRA put a down payment toward the purchase of a new electric material handler. This proposed project would provide the final lump sum payment of the material handler.



Henderson County Riverport Authority
Lump Sum Payment for New Material Handler Project
Total Cost: \$2,042,046.00 – KPRCM Funds Requested: \$204,000.00

Using round one KPRCM funds, HCRA put a down payment toward the purchase of a new electric material handler. This proposed project would provide a lump sum payment toward the purchase of the material handler.



Hickman-Fulton County Regional Riverport Authority
Crane Aggregate Clamshell Bucket Project
Total Cost: \$84,895.00 – KPRCM Funds Requested: \$84,895.00

This proposed project would design and construct a four-rope 4-cubic yard aggregate clamshell bucket to handle rock or aggregate materials. This would supplement the existing 6.5 cubic yard light material clamshell bucket that cannot handle aggregate or rock.



Hickman-Fulton County Regional Riverport Authority
Grain Truck Conveyor Upgrade Project
Total Cost: \$175,000.00 – KPRCM Funds Requested: \$175,000.00



This proposed project would upgrade the Grain Truck Conveyor to allow for the eventual addition of a Hopper Surge Tank. The addition of the Hopper Surge Tank would hold grain until a barge is in position to accept grain. This will help eliminate long wait lines while the barges are moved. This part of the project will upgrade the pit conveyor and bucket lift to move grain to a future Hopper Surge Tank.

Owensboro Riverport Authority
20-ton Hook /Rotator Project

Total Cost: \$35,815.00 – KPRCM Funds Requested: \$35,815.00



The proposed project would purchase a 20-ton hook/rotator that will be primarily used for handling aluminum or paper bales with the 875-material handler. The hook/rotator will increase efficiency when loading or unloading aluminum sow/tbar/ingot with the material handler crane to/from a barge.

Owensboro Riverport Authority
5,000 Lb. Forklift & Clamp Project
Total Cost: \$77,708.00 – KPRCM Funds Requested: \$77,708.00



The proposed project would purchase a new 5,000lb forklift to support expanding workforce and ensure timely and effective handling of materials. Current equipment is no longer sufficient to maintain the level of production required.

Owensboro Riverport Authority
7-ton C-Hook Rotator Project

Total Cost: \$76,993.00 – KPRCM Funds Requested: \$76,993.00

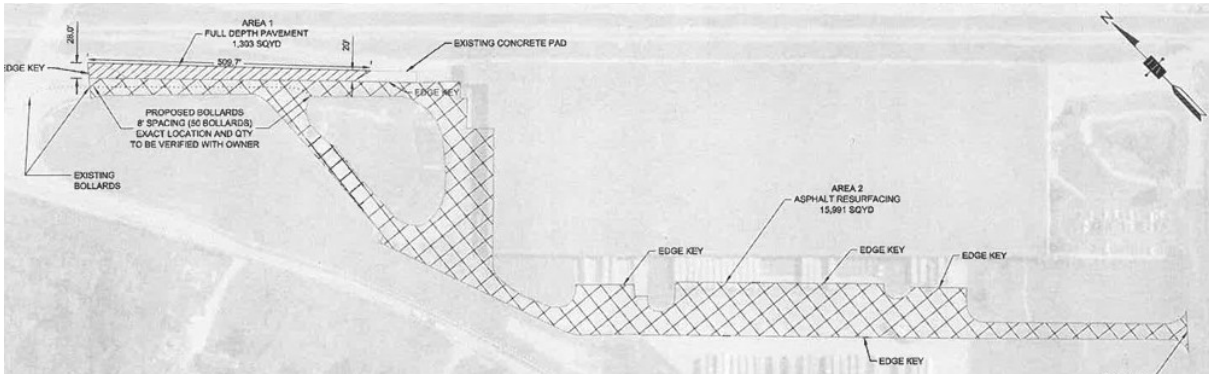


The proposed project would purchase a 7-ton triple c-hook/rotator used for handling rolled rod coils with 875 material handler. Because of the rotator feature the operator can position the device to handle 3 coils of steel rod at a time without the aid of workers inside the barge or on the dock. The unloading and handling operation would be less dependent on hands-on labor.

Owensboro Riverport Authority Resurfacing and Exit Road Extension Project

Total Cost: \$381,743.00 – KPRCM Funds Requested: \$381,743.00

Proposed project would repair existing asphalt and provide a more efficient exiting of trucks from warehouse and guard check in. Area 1 would be adding full depth pavement to widen exit. Area 2 would be resurfacing asphalt from 2003 that is beginning to fail. Final portion of project would be to replace plastic truck barriers with sleeved bollards.



Paducah-McCracken County Riverport Authority
Bulk Yard Access Road Project
Total Cost: \$167,063.00 – KPRCM Funds Requested: \$167,063.00

CONCRETE PORTION IN ROAD FOR TURNING STABILIZATION
17'-0" WIDE X 80'-0" LONG.
CONCRETE ENTRANCE - 30'-0"
WIDE X 75'-0" LONG WITH 20'-0"
RADIUS.
GRAVEL PORTION OF ENTRANCE
30'-0" WIDE X 230'-0" LONG.



The proposed project would construct a 305' x 30' access road to allow for the establishment of a designated entry and exit gate to ensure safe and efficient truck flow.

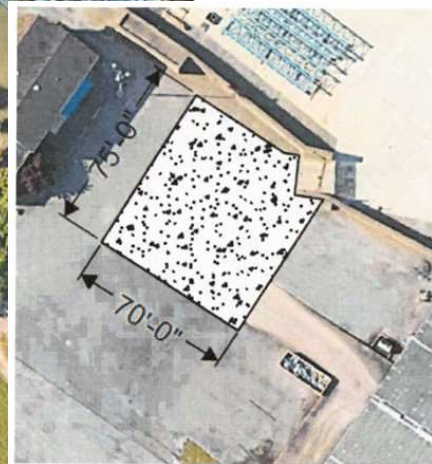


Paducah-McCracken County Riverport Authority
General Cargo Facility-Concrete Travelway Project
Total Cost: \$256,750.00 – KPRCM Funds Requested: \$256,750.00

CONCRETE SLAB TO CONNECT
FLOODWALL OPENING TO
WAREHOUSE LOADING RAMP
70'-0" X 75'-0".



The proposed project would replace a deteriorated asphalt surface with a new 70' x 75' x 14" concrete slab better designed to accommodate the forklift traffic of supersacks being transferred from the dock to Warehouse 3.



Paducah-McCracken County Riverport Authority
Sennebogen Bucket Replacement Project
Total Cost: \$61,875.00 – KPRCM Funds Requested: \$61,875.00



The proposed project would replace the current 4.5 cu/yd bucket with a 3.5 cu/yd bucket. A performance study found the material handler is currently operating beyond its designed hydraulic lifting capacity. A smaller bucket would allow machine to operate within its design parameters throughout unloading cycle range, which would reduce barge unloading time, unscheduled downtime and maintenance costs.



Agenda:

Welcome and Introductions

Public Comment Period (2-3 minutes max)

Presentation of Minutes from December 4, 2024, meeting

Update on status of open and closed Kentucky Riverport Improvement (KRI) projects

Update on status of open and closed Kentucky Public Riverport Construction and Maintenance (KPRCM) projects

Submission of and Discussion of Conflict-of-Interest Statements

Discussion of FY 25 Kentucky Public Riverport Construction and Maintenance (KPRCM) program

Summary of applications received for FY 25 KPRCM funds-Final Call

Review and Prioritization of application for FY 25 KPRCM applications-Final Call

Discussion of next WTAB meeting

Discussion of a potential Economic Impact of Kentucky's Ports and Waterways study

Adjournment

Applications for FY 2025 KPRCM-Final

Available Funds: \$1,427,478.00

Applicant	Project	Total Cost	KPRCM Requested
Eddyville	Mooring Dolphin Installation Project	\$515,075.00	\$515,075.00
Henderson	Final Lump Sum Payment for New Electric Material Handler	\$2,042,046.35	\$338,046.00
Henderson	Lump Sum Payment for New Material Handler	\$2,042,046.35	\$204,000.00
Hickman-Fulton	Crane Aggregate Clamshell Bucket	\$84,895.00	\$84,895.00
Hickman-Fulton	Grain Truck Conveyor Upgrade	\$175,000.00	\$175,000.00
Owensboro	20-ton Hook /Rotator	\$35,815.00	\$35,815.00
Owensboro	5,000 Lb Forklift & Clamp	\$77,708.00	\$77,708.00
Owensboro	7-ton C-Hook Rotator	\$76,993.00	\$76,993.00
Owensboro	Resurfacing and Exit Road Extension	\$381,743.00	\$381,743.00
Paducah-McCracken	Bulk Yard Access Road	\$167,063.30	\$167,063.00
Paducah-McCracken	General Cargo Facility-Concrete Travelway	\$256,750.00	\$256,750.00
Paducah-McCracken	Sennebogen Bucket Replacement	\$61,875.00	\$61,875.00
	Total	\$3,874,963.65	\$2,374,963.00



Agenda:

Welcome and Introductions

Public Comment Period (2-3 minutes max)

Presentation of Minutes from December 4, 2024, meeting

Update on status of open and closed Kentucky Riverport Improvement (KRI) projects

Update on status of open and closed Kentucky Public Riverport Construction and Maintenance (KPRCM) projects

Submission of and Discussion of Conflict-of-Interest Statements

Discussion of FY 25 Kentucky Public Riverport Construction and Maintenance (KPRCM) program

Summary of applications received for FY 25 KPRCM funds-Final Call

Review and Prioritization of application for FY 25 KPRCM applications-Final Call

Discussion of next WTAB meeting

Discussion of a potential Economic Impact of Kentucky's Ports and Waterways study

Adjournment



Agenda:

Welcome and Introductions

Public Comment Period (2-3 minutes max)

Presentation of Minutes from December 4, 2024, meeting

Update on status of open and closed Kentucky Riverport Improvement (KRI) projects

Update on status of open and closed Kentucky Public Riverport Construction and Maintenance (KPRCM) projects

Submission of and Discussion of Conflict-of-Interest Statements

Discussion of FY 25 Kentucky Public Riverport Construction and Maintenance (KPRCM) program

Summary of applications received for FY 25 KPRCM funds-Final Call

Review and Prioritization of application for FY 25 KPRCM applications-Final Call

Discussion of next WTAB meeting

Discussion of a potential Economic Impact of Kentucky's Ports and Waterways study

Adjournment



Agenda:

Welcome and Introductions

Public Comment Period (2-3 minutes max)

Presentation of Minutes from December 4, 2024, meeting

Update on status of open and closed Kentucky Riverport Improvement (KRI) projects

Update on status of open and closed Kentucky Public Riverport Construction and Maintenance (KPRCM) projects

Submission of and Discussion of Conflict-of-Interest Statements

Discussion of FY 25 Kentucky Public Riverport Construction and Maintenance (KPRCM) program

Summary of applications received for FY 25 KPRCM funds-Final Call

Review and Prioritization of application for FY 25 KPRCM applications-Final Call

Discussion of next WTAB meeting

Discussion of a potential Economic Impact of Kentucky's Ports and Waterways study

Adjournment



transportation.ky.gov

Thank you for your attendance and participation...

Jeremy Edgeworth
Freight, Rail, & Waterways
Division of Planning - Modal Programs
Kentucky Transportation Cabinet
200 Mero Street, Frankfort, KY 40622
e: Jeremy.Edgeworth@ky.gov
o: (502) 782.5095