



FY 2024 USDOT RAISE Truck Parking Improvement Project

Enhancing Kentucky's Freight Network Corridors



Appendix D



COUNTY OF	ITEM NO.	SHEET NO.
BULLITT	-	RO01

Commonwealth of Kentucky DEPARTMENT OF HIGHWAYS

PLANS OF PROPOSED PROJECT

REST AREA EXPANSION (I-65 MP 113) TRUCK PARKING STUDY BULLITT COUNTY



INDEX OF SHEETS	
SHEET NO.	DESCRIPTION
R1	LAYOUT SHEET
R2	TYPICAL SECTIONS-SUMMARY OF QUANTITIES
R3	OVERVIEW & PAVEMENT MARKING LAYOUT
R4	PAVEMENT LAYOUT SHEET
R5	LIGHTING LAYOUT SHEET

SHEETS NOT INCLUDED IN TOTAL SHEETS

STANDARD DRAWINGS	
NUMBER	



**PRELIMINARY
(15% PLANS)**

LAYOUT MAP

FILE NAME: C:\PWORKING\EAST01\02408238\RO01_ID152.DGN

USER: GFWELO
DATE PLOTTED: November 14, 2022

E-SHEET NAME:
MicroStation v8.11.9.919

DESIGN CRITERIA	
CLASS OF HIGHWAY	SPECIAL (INTERSTATE RURAL)
TYPE OF TERRAIN	ROLLING
DESIGN SPEED	SPECIAL RAMPS 55 MPH
REQUIRED NPSD	
REQUIRED PSD	
LEVEL OF SERVICE	N/A
ADT PRESENT ()	
ADT FUTURE ()	
DHV	
D %	
T %	

GEOGRAPHIC COORDINATES	
LATITUDE	37 DEGREES 56 MINUTES 47 SECONDS NORTH
LONGITUDE	85 DEGREES 41 MINUTES 26 SECONDS WEST

DESIGNED	
% RESTRICTED SD	N/A
LEVEL OF SERVICE	N/A
MAX. DISTANCE W/O PASSING	N/A

LENGTH	LIN. FT.	MILES	LENGTH	LIN. FT.	MILES	LENGTH	LIN. FT.	MILES	LENGTH	LIN. FT.	MILES
1,600	0.30										
ADDED	FOR EQUALITIES		ADDED	FOR EQUALITIES		ADDED	FOR EQUALITIES		ADDED	FOR EQUALITIES	
DEDUCTED	NOT INCLUDED		DEDUCTED	NOT INCLUDED		DEDUCTED	NOT INCLUDED		DEDUCTED	NOT INCLUDED	
RAILROAD CROSSINGS NO.	LIN. FT.		RAILROAD CROSSINGS NO.	LIN. FT.		RAILROAD CROSSINGS NO.	LIN. FT.		RAILROAD CROSSINGS NO.	LIN. FT.	
BRIDGES	LIN. FT.		BRIDGES	LIN. FT.		BRIDGES	LIN. FT.		BRIDGES	LIN. FT.	

**Commonwealth of Kentucky
DEPARTMENT OF HIGHWAYS
COUNTY OF
BULLITT**

ITEM NO. _____

PROJECT TRUCK PARKING STUDY

NUMBER: 2021-04

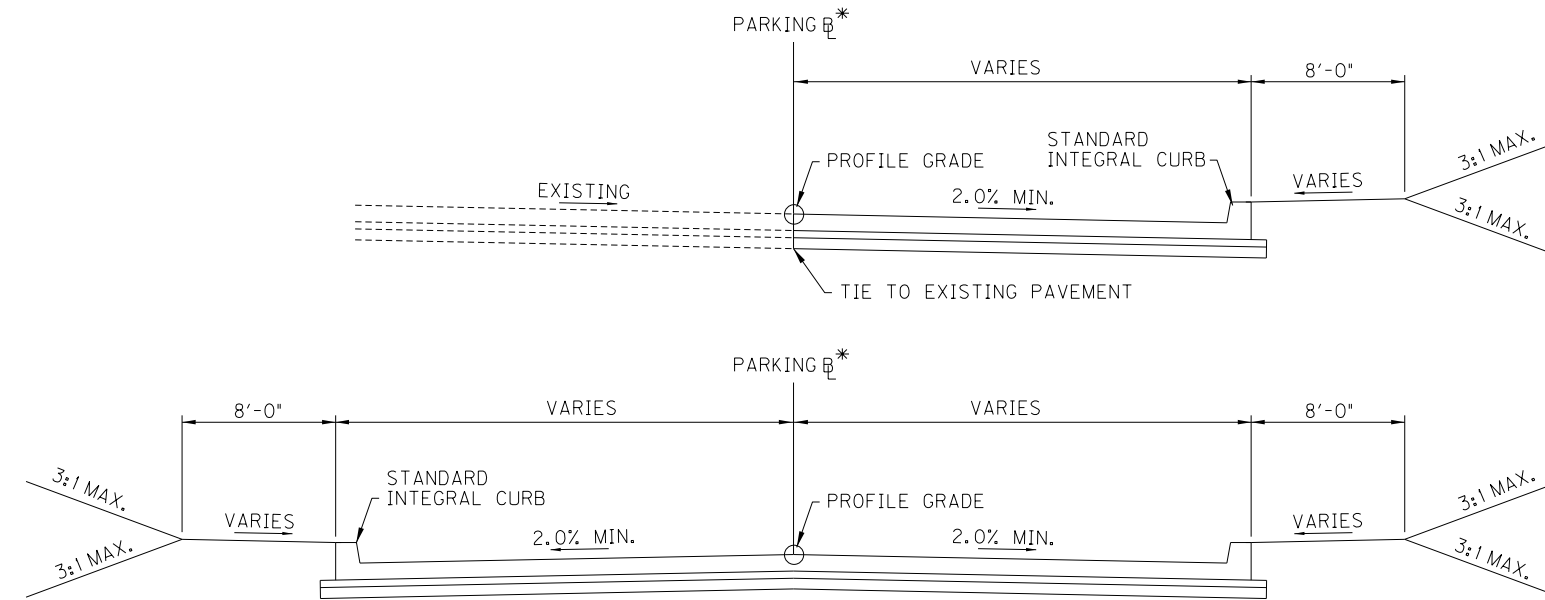
LETTING DATE: N/A

RECOMMENDED BY: _____ PROJECT MANAGER DATE: _____

PLAN APPROVED BY: _____ STATE HIGHWAY ENGINEER DATE: _____

GENERAL AND DRAINAGE SUMMARY

ITEM	DESCRIPTION	UNIT	SB	PROJECT TOTALS
02545	CLEARING AND GRUBBING	LS	1	1
02650	MAINTAIN & CONTROL TRAFFIC	LS	1	1
02726	STAKING	LS	1	1
02568	MOBILIZATION	LS	1	1
02569	DEMOBILIZATION	LS	1	1
00522	STORM SEWER PIPE - 18 IN	LF	750	750
01371	METAL END SECTION TY 1 - 18 IN	EACH	1	1
01487	CURB BOX INLET TYPE F	EACH	6	6
01641	JUNCTION BOX	EACH	1	1
01830	STANDARD INTEGRAL CURB	LF	1,425	1,425
01904	REMOVE CURB	LF	1,900	1,900
02058	REMOVE PCC PAVEMENT	SOYD	880	880
02200	ROADWAY EXCAVATION	CUYD	8,300	8,300
02230	EMBANKMENT IN PLACE	CUYD	500	500
02483	CHANNEL LINING CLASS II	TON	375	375
02701	TEMP SILT FENCE	LF	2,800	2,800
05986	SEEDING AND PROTECTION	SOYD	20,000	20,000
05990	SODDING	SOYD	3,000	3,000
06542	PAVE STRIPING - THERMO - 6 IN W	LF	4,650	4,650
06546	PAVE STRIPING - THERMO - 12 IN W	LF	750	750
20550ND	SAWCUT PAVEMENT	LF	2,473	2,473
04714	POLE 120' MTG HT HIGH MAST	EACH	5	5
04742	HIGH MAST POLE BASE	EACH	5	5
04750	TRANSFORMER BASE	EACH	5	5
04761	LIGHTING CONTROL EQUIPMENT	EACH	1	1
04798	CONDUIT 3-1/2 IN	LF	2,000	2,000
04810	ELECTRICAL JUNCTION BOX	EACH	1	1
04820	TRENCHING AND BACKFILLING	LF	2,000	2,000
04862	CABLE-NO. 4/3C DUCTED	LF	4,000	4,000
04899	ELECTRICAL SERVICE	EACH	0	0
04939	REMOVE POLE	EACH	10	10
04941	REMOVE POLE BASE	EACH	10	10
24589ED	LED LUMINAIRE	EACH	30	30



PARKING SECTION

PARKING AREA PAVEMENT**

CONCRETE PAVEMENT	10" NON-REINFORCED PORTLAND CEMENT CONCRETE PAVEMENT
DGA BASE	4" COMPACTED DENSE GRADED AGGREGATE BASE
ROADBED	8" LIME MODIFIED ROADBED

PAVING SUMMARY

ITEM CODE	ITEM	NOTES	UNIT	SB	TOTAL PROJECT
00001	DGA BASE		TON	2,364	2,364
00013	LIME STABILIZED ROADBED		SOYD	11,820	11,820
02069	JPC PAVEMENT-10 IN		SOYD	11,117	11,117

PAVING AREAS

ITEM CODE	ITEM	NOTES	DEPTH (inches)	TOTAL PROJECT	
				SB	S Q U A R E Y A R D S
00001	DGA BASE		4.00	11,820	11,820
00013	LIME STABILIZED ROADBED		8.00	11,820	11,820
02069	JPC PAVEMENT-10 IN		10.00	11,117	11,117

- * - RAMP AND PARKING BASELINES NOT DEFINED IN THIS SET. BASELINES WILL BE DETERMINED DURING SUBSEQUENT DESIGN PHASE.
- ** - PRELIMINARY PAVEMENT DESIGNS ARE BASED ON PAVEMENT DESIGNS UTILIZED AT OTHER KYTC REST AREAS. SITE SPECIFIC PAVEMENT DESIGN WILL BE COMPLETED DURING SUBSEQUENT DESIGN PHASE.

SCALE: 1"=

TRUCK PARKING STUDY
TYPICAL SECTIONS & QUANTITIES
I-65 REST AREA EXPANSION

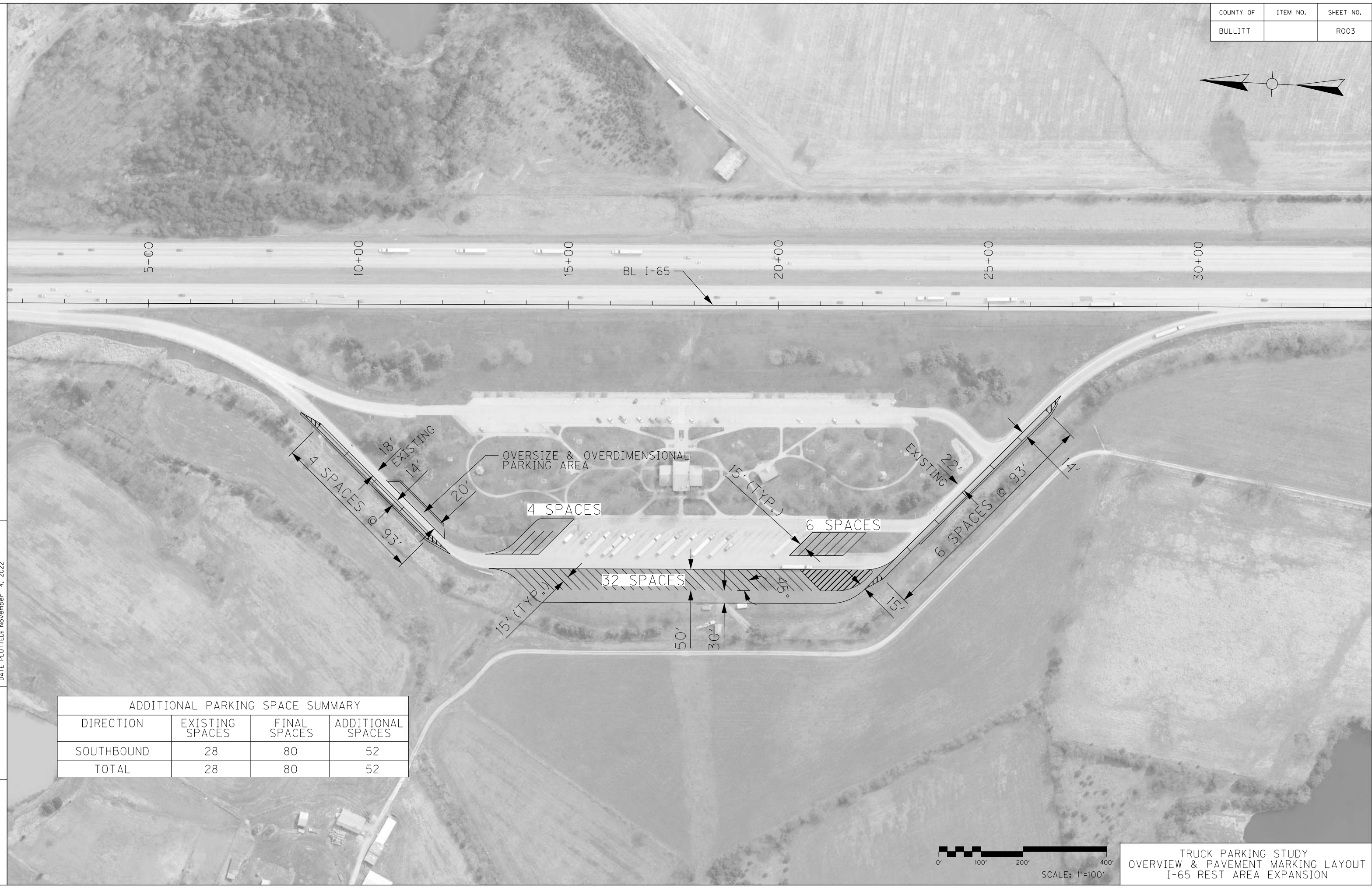


FILE NAME: C:\PWORKING\EA5TO1\02408238\RO03_ID152.DGN

USER: GFVELO
DATE PLOTTED: November 14, 2022

E-SHEET NAME:

MicroStation v8.11.9.919



DIRECTION	EXISTING SPACES	FINAL SPACES	ADDITIONAL SPACES
SOUTHBOUND	28	80	52
TOTAL	28	80	52



TRUCK PARKING STUDY
OVERVIEW & PAVEMENT MARKING LAYOUT
I-65 REST AREA EXPANSION

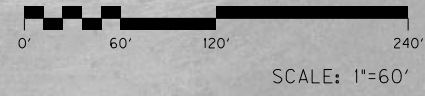
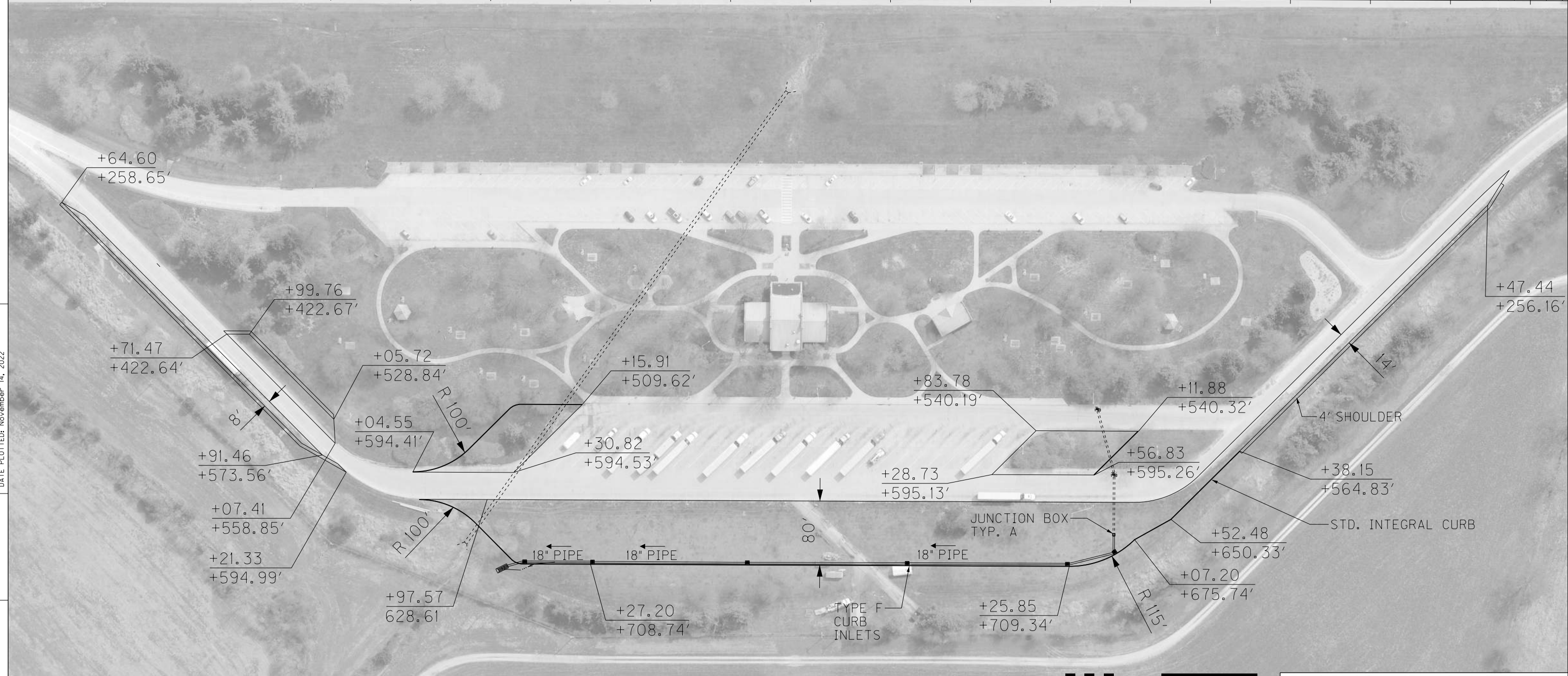
COUNTY OF	ITEM NO.	SHEET NO.
BULLITT		R004



8+00 9+00 10+00 11+00 12+00 13+00 14+00 15+00 16+00 17+00 18+00 19+00 20+00 21+00 22+00 23+00 24+00 25+00 26+00 27+00

BL I-65

FILE NAME: C:\PWORKING\EAST01\02408238 R004_ID152.DGN
 USER: JALBERS
 DATE PLOTTED: November 14, 2022
 E-SHEET NAME:
 MicroStation v8.11.9.919



TRUCK PARKING STUDY
 PAVEMENT LAYOUT SHEET
 I-65 REST AREA EXPANSION

COUNTY OF	ITEM NO.	SHEET NO.
BULLITT		RO05

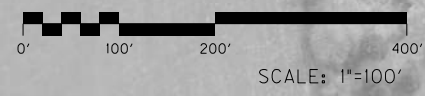


FILE NAME: C:\PWORKING\EA\ST01\02408238\RO05_ID152.DGN

USER: GFVELO
DATE PLOTTED: November 14, 2022

E-SHEET NAME:

MicroStation v8.11.9.919



TRUCK PARKING STUDY
LIGHTING LAYOUT SHEET
I-65 REST AREA EXPANSION

COUNTY OF	ITEM NO.	SHEET NO.
OLDHAM	-	RO01

Commonwealth of Kentucky DEPARTMENT OF HIGHWAYS

PLANS OF PROPOSED PROJECT

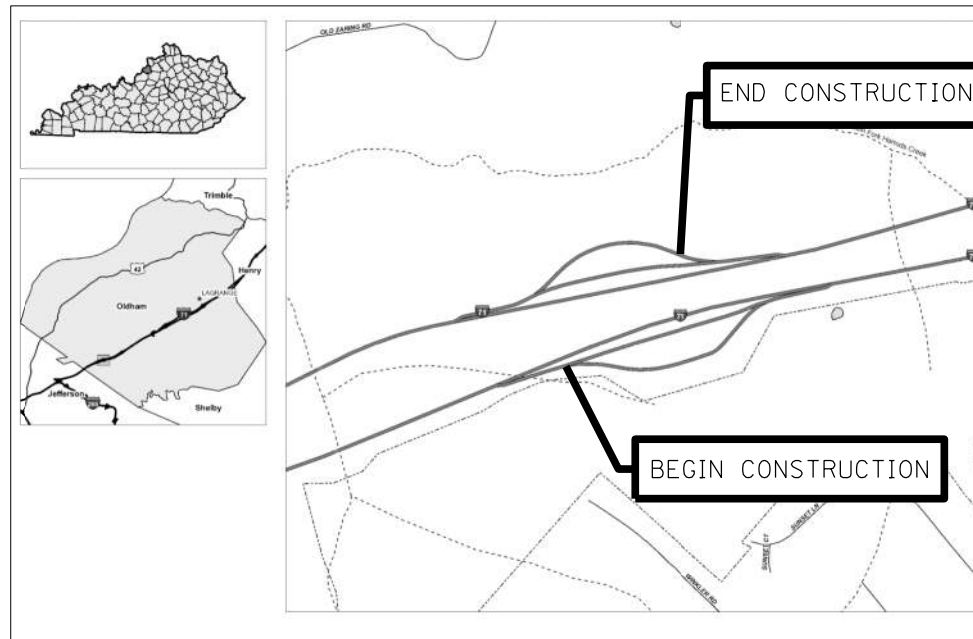
TRUCK PARKING EXPANSION (I-71 MP 13) TRUCK PARKING STUDY OLDHAM COUNTY



INDEX OF SHEETS	
SHEET NO.	DESCRIPTION
R1	LAYOUT SHEET
R2	TYPICAL SECTIONS-SUMMARY OF QUANTITIES
R3	OVERVIEW AND PAVEMENT MARKING SHEET
R4-R5	PAVEMENT LAYOUT SHEET
R6	LIGHTING LAYOUT SHEET

SHEETS NOT INCLUDED IN TOTAL SHEETS

STANDARD DRAWINGS	
NUMBER	



LAYOUT MAP

FILE NAME: C:\PWORKING\EAST01\0287167\RO01_ID175.DGN

USER: GFWELO
DATE PLOTTED: November 17, 2022

E-SHEET NAME:
MicroStation v8.11.9.919

DESIGN CRITERIA	
CLASS OF HIGHWAY	SPECIAL (INTERSTATE RURAL)
TYPE OF TERRAIN	ROLLING
DESIGN SPEED	SPECIAL RAMPS 55 MPH
REQUIRED NPSD	
REQUIRED PSD	
LEVEL OF SERVICE	N/A
ADT PRESENT ()	
ADT FUTURE ()	
DHV	
D %	
T %	

GEOGRAPHIC COORDINATES	
LATITUDE	38 DEGREES 20 MINUTES 19 SECONDS NORTH
LONGITUDE	85 DEGREES 31 MINUTES 3 SECONDS WEST

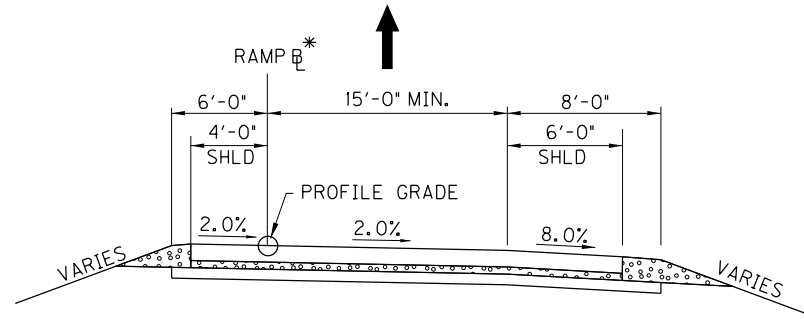
DESIGNED	
% RESTRICTED SD	
LEVEL OF SERVICE	
MAX. DISTANCE W/O PASSING	

LENGTH	LIN. FT.	MILES	LENGTH	LIN. FT.	MILES	LENGTH	LIN. FT.	MILES	LENGTH	LIN. FT.	MILES
ADDED			ADDED			ADDED			ADDED		
DEDUCTED			DEDUCTED			DEDUCTED			DEDUCTED		
FOR EQUALITIES			FOR EQUALITIES			FOR EQUALITIES			FOR EQUALITIES		
NOT INCLUDED			NOT INCLUDED			NOT INCLUDED			NOT INCLUDED		
RAILROAD CROSSINGS NO.			RAILROAD CROSSINGS NO.			RAILROAD CROSSINGS NO.			RAILROAD CROSSINGS NO.		
BRIDGES			BRIDGES			BRIDGES			BRIDGES		

Commonwealth of Kentucky DEPARTMENT OF HIGHWAYS COUNTY OF OLDHAM	
ITEM NO.	-
PROJECT	TRUCK PARKING STUDY
NUMBER:	2021-04
LETTING DATE:	N/A
RECOMMENDED BY:	PROJECT MANAGER DATE:
PLAN APPROVED BY:	STATE HIGHWAY ENGINEER DATE:

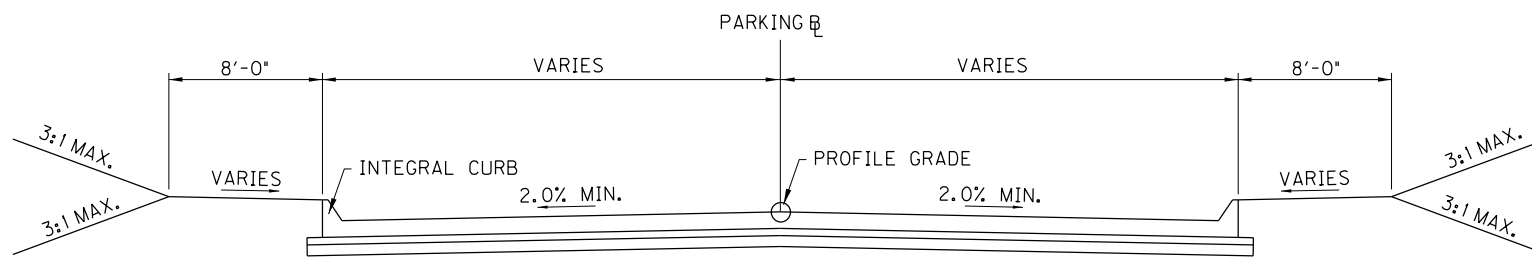
GENERAL AND DRAINAGE SUMMARY

ITEM	DESCRIPTION	UNIT	NB	SB	PROJECT TOTALS
02545	CLEARING AND GRUBBING	LS			1
02650	MAINTAIN & CONTROL TRAFFIC	LS			1
02726	STAKING	LS			1
02568	MOBILIZATION	LS			1
02569	DEMobilIZATION	LS			1
00522	STORM SEWER PIPE - 18 IN	LF	1,313	1,302	2,615
01433	SLOPED BOX OUTLET TYPE 1-18 IN	EACH	1	0	1
01456	CURB BOX INLET TYPE A	EACH	4	10	14
01541	DROP BOX INLET TYPE 10	EACH	1	0	1
01830	STANDARS INTEGRAL CURB	LF	2,095	2,527	4,622
01904	REMOVE CURB	LF	1,502	246	1,748
02058	REMOVE PCC PAVEMENT	SOYD	0	4,633	4,633
02200	ROADWAY EXCAVATION	CUYD	5,000	9,000	14,000
02230	EMBANKMENT IN PLACE	CUYD	6,000	90,000	96,000
02701	TEMP SILT FENCE	LF	4,766	5,047	9,813
02720	SIDEWALK-4 IN CONCRETE	SOYD	156	364	520
05986	SEEDING AND PROTECTION	SOYD	14,673	7,451	22,124
05990	SODDING	SOYD	2,523	3,663	6,186
06542	PAVE STRIPING-THERMO-6 IN W	LF	3,472	2,688	6,160
08018	RETAINING WALL	SOFT	0	15,000	15,000
20550ND	SAWCUT PAVEMENT	LF	1,597	285	1,882
04714	POLE 120' MTG HT HIGH MAST	EACH	3	3	6
04742	HIGH MAST POLE BASE	EACH	3	3	6
04750	TRANSFORMER BASE	EACH	3	3	6
04761	LIGHTING CONTROL EQUIPMENT	EACH	1	1	2
04798	CONDUIT 3-1/2 IN	LF	1,500	1,500	3,000
04810	ELECTRICAL JUNCTION BOX	EACH	2	2	4
04820	TRENCHING AND BACKFILLING	LF	1,500	1,500	3,000
04862	CABLE-NO. 4/3C DUCTED	LF	3000	3000	6000
04899	ELECTRICAL SERVICE	EACH	0	0	0
04939	REMOVE POLE	EACH	4	1	5
04941	REMOVE POLE BASE	EACH	4	1	5
24589ED	LED LUMINAIRE	EACH	18	18	36



RAMP SECTION

- RAMP PAVEMENT****
- CONCRETE PAVEMENT — 11" NON -REINFORCED PORTLAND CEMENT CONCRETE PAVEMENT
 - DGA BASE — 6" COMPACTED DENSE GRADED AGGREGATE BASE
 - ROADBED — 8" LIME MODIFIED ROADBED
- SHOULDERS****
- CONCRETE PAVEMENT — 11" NON -REINFORCED PORTLAND CEMENT CONCRETE PAVEMENT
 - DGA BASE — 6" COMPACTED DENSE GRADED AGGREGATE BASE
 - ROADBED — 8" LIME MODIFIED ROADBED



PARKING SECTION

- PARKING AREA PAVEMENT**
- CONCRETE PAVEMENT — 10" NON -REINFORCED PORTLAND CEMENT CONCRETE PAVEMENT
 - DGA BASE — 4" COMPACTED DENSE GRADED AGGREGATE BASE
 - ROADBED — 8" LIME MODIFIED ROADBED

PAVING SUMMARY

ITEM CODE	ITEM	NOTES	UNIT	NB	SB	TOTAL PROJECT
00001	DGA BASE		TON	2,443	2,179	4,622
00013	LIME STABILIZED ROADBED		SOYD	12,216	10,896	23,112
02069	JPC PAVEMENT-10 IN		SOYD	11,878	10,412	22,290

PAVING AREAS

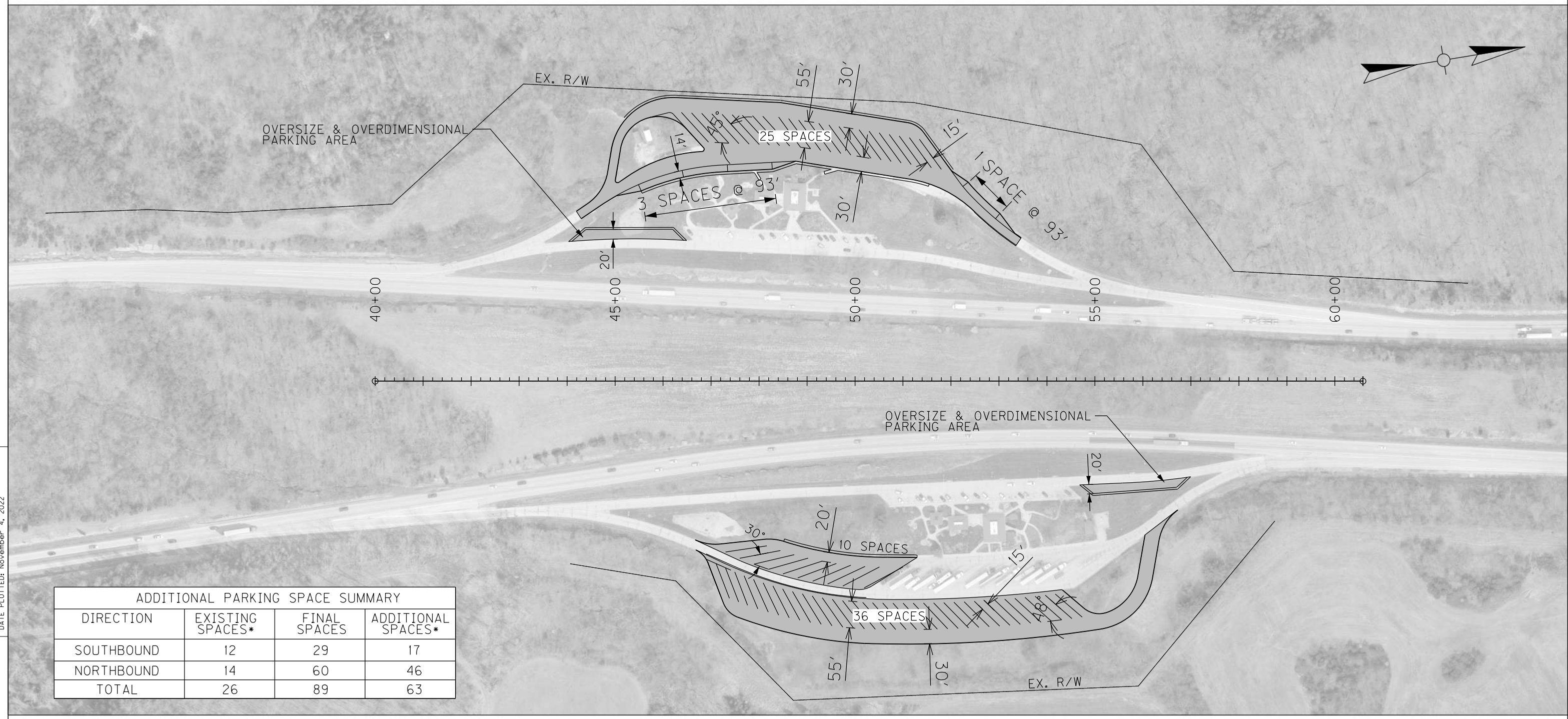
ITEM CODE	ITEM	NOTES	DEPTH (inches)	S Q U A R E Y A R D S		TOTAL PROJECT
				NB	SB	
00001	DGA BASE		4.00	12,216	10,896	23,112
00013	LIME STABILIZED ROADBED		8.00	12,216	10,896	23,112
02069	JPC PAVEMENT-10 IN		10.00	11,878	10,412	22,290

- * - RAMP AND PARKING BASELINES NOT DEFINED IN THIS SET. BASELINES WILL BE DETERMINED DURING SUBSEQUENT DESIGN PHASE.
- ** - PRELIMINARY PAVEMENT DESIGNS ARE BASED ON PAVEMENT DESIGNS UTILIZED AT OTHER KYTC REST AREAS. SITE SPECIFIC PAVEMENT DESIGN WILL BE COMPLETED DURING SUBSEQUENT DESIGN PHASE.

SCALE: 1"=

TRUCK PARKING STUDY
TYPICAL SECTIONS & QUANTITIES
I-71 REST AREA EXPANSION

FILE NAME: C:\PWORKING\EA5T01\028716\A\RO03_ID175.DGN
 USER: BSAYLOR
 DATE PLOTTED: November 4, 2022
 E-SHEET NAME:
 MicroStation v8.11.9.919



ADDITIONAL PARKING SPACE SUMMARY			
DIRECTION	EXISTING SPACES*	FINAL SPACES	ADDITIONAL SPACES*
SOUTHBOUND	12	29	17
NORTHBOUND	14	60	46
TOTAL	26	89	63

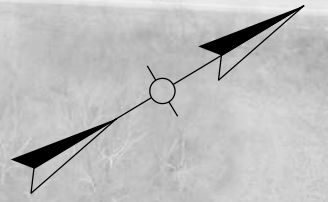
*EXISTING PARKING AREA FEATURES NON-DELINEATED PARALLEL PARKING SPACES. NUMBER OF SPACES ESTIMATED BASED UPON ASSUMED TRUCK LENGTH AND DENSITY.



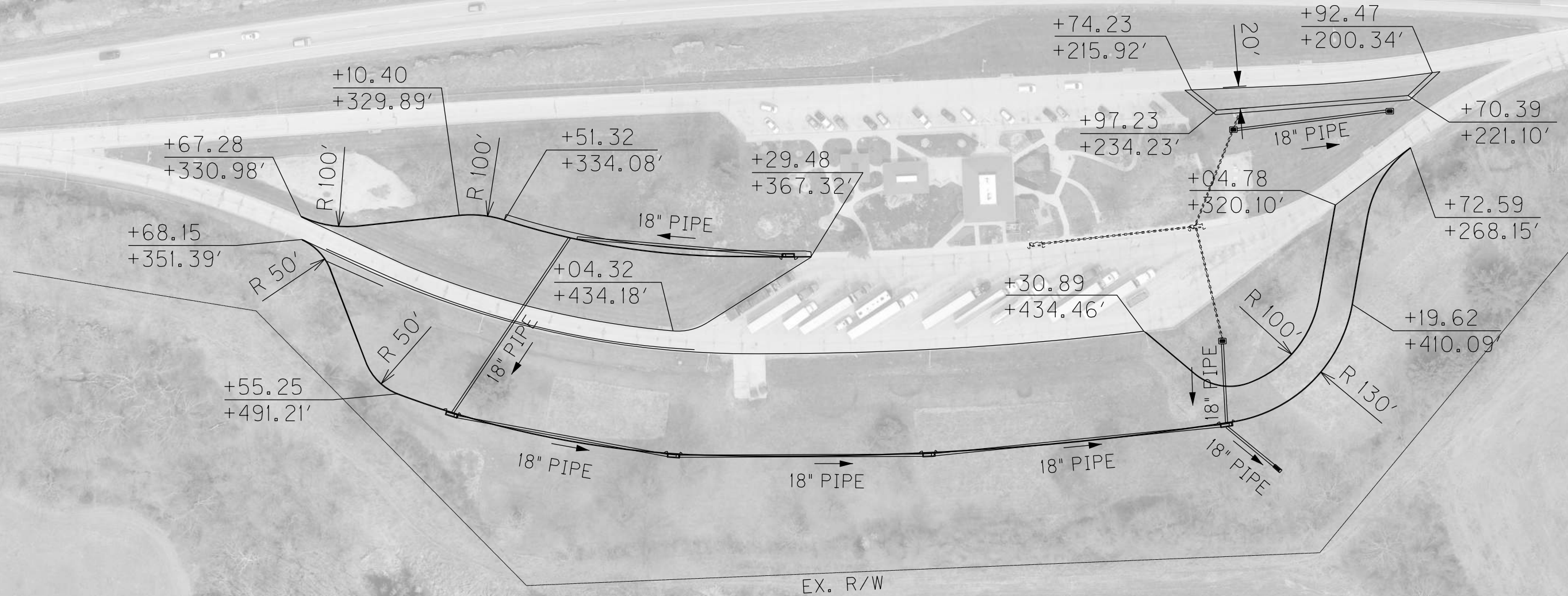
TRUCK PARKING STUDY
 OVERVIEW AND PAVEMENT MARKING LAYOUT
 I-71 REST AREA EXPANSION

COUNTY OF	ITEM NO.	SHEET NO.
OLDHAM	-	R004

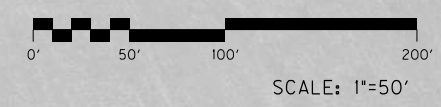
43+00 44+00 45+00 46+00 47+00 48+00 49+00 50+00 51+00 52+00 53+00 54+00 55+00 56+00 57+00 58+00



BL I-71



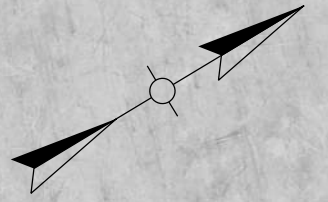
FILE NAME: C:\PWORKING\EASTON\028716\R004_ID175.DGN
 USER: GFWELO
 DATE PLOTTED: November 17, 2022
 E-SHEET NAME:
 MicroStation v8.11.9.919



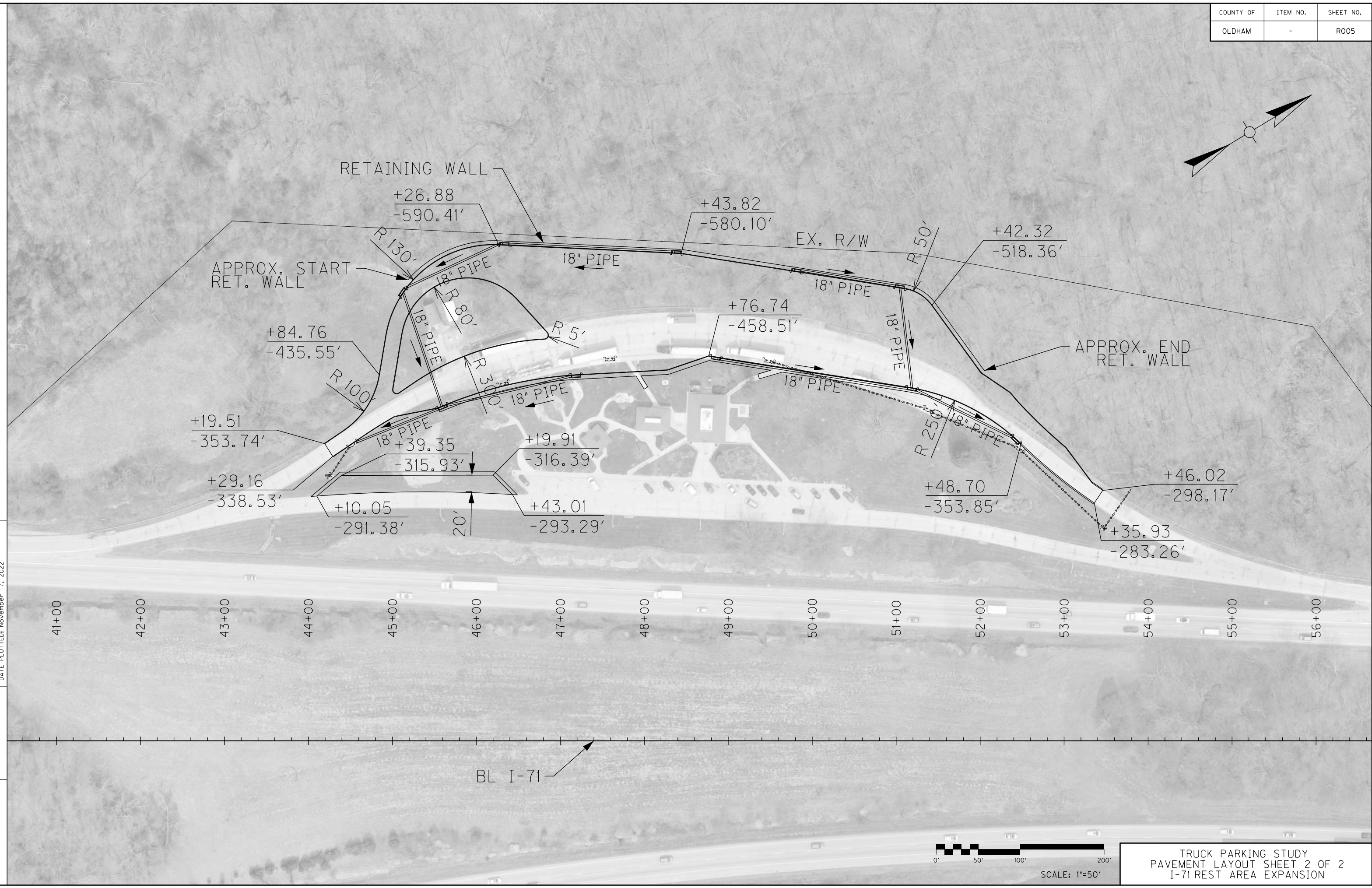
SCALE: 1"=50'

TRUCK PARKING STUDY
 PAVEMENT LAYOUT SHEET 1 OF 2
 I-71 REST AREA EXPANSION

COUNTY OF	ITEM NO.	SHEET NO.
OLDHAM	-	R005

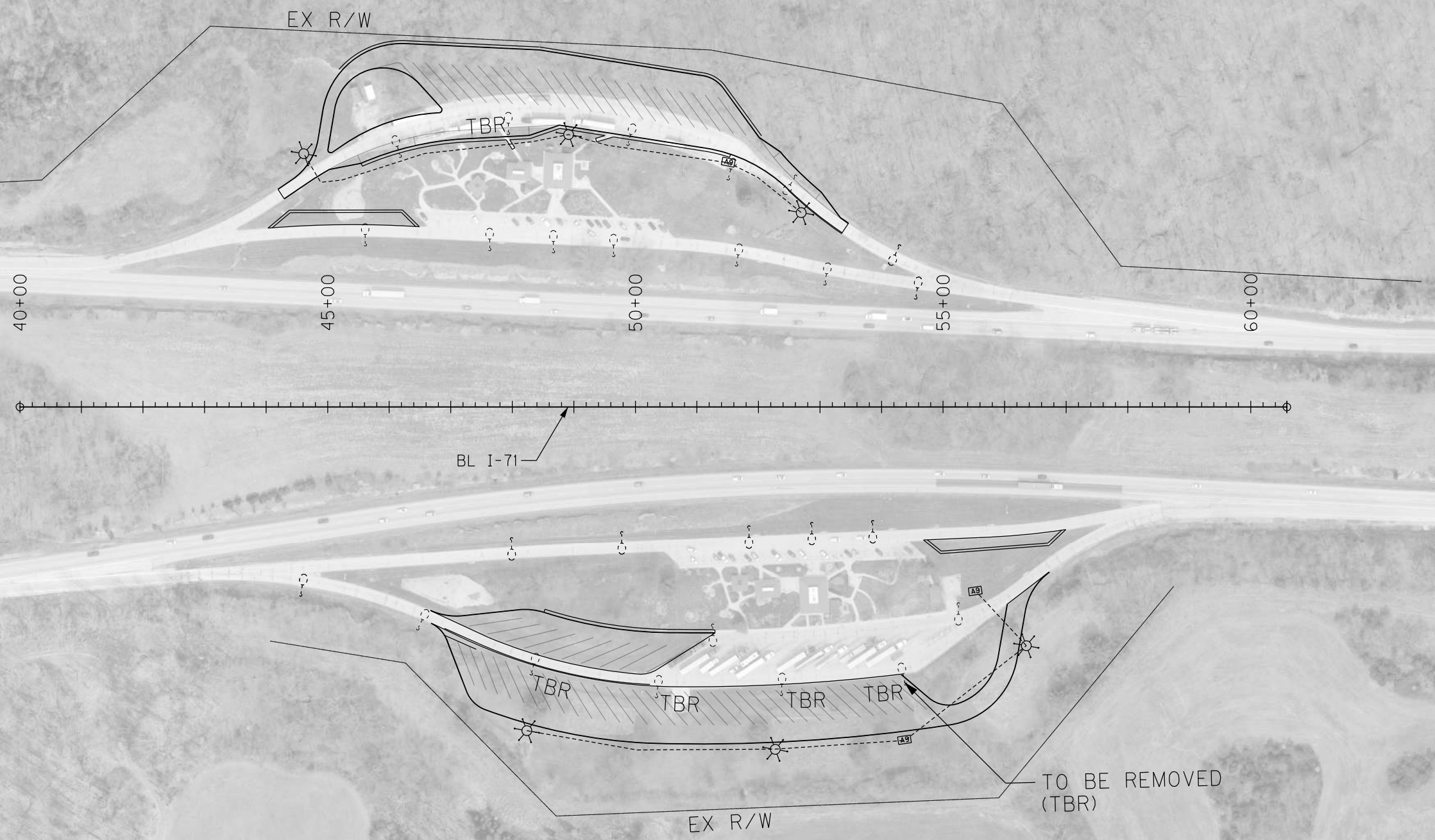
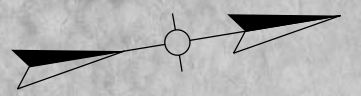


FILE NAME: C:\PWORKING\EA5T01\028716\A\RO05_ID175.DGN
 USER: GFWELO
 DATE PLOTTED: November 17, 2022
 E-SHEET NAME:
 MicroStation v8.11.9.919



TRUCK PARKING STUDY
 PAVEMENT LAYOUT SHEET 2 OF 2
 I-71 REST AREA EXPANSION

COUNTY OF	ITEM NO.	SHEET NO.
OLDHAM	-	R006



NOTE:
 LOCATION OF EXISTING LIGHTING CONDUITS NOT AVAILABLE FROM RECORD DRAWINGS. LOCATION OF NEW CONDUIT TIE-IN AS SHOWN ARE APPROXIMATE.



SCALE: 1"=100'

TRUCK PARKING STUDY
 LIGHTING SHEET LAYOUT
 I-71 REST AREA EXPANSION

FILE NAME: C:\PWORKING\EA5T01\028716\RO06_ID175.DGN

USER: JALBERS
 DATE PLOTTED: November 17, 2022

E-SHEET NAME:

MicroStation v8.11.9.919

COUNTY OF	ITEM NO.	SHEET NO.
WOODFORD	-	RO01

Commonwealth of Kentucky DEPARTMENT OF HIGHWAYS

PLANS OF PROPOSED PROJECT

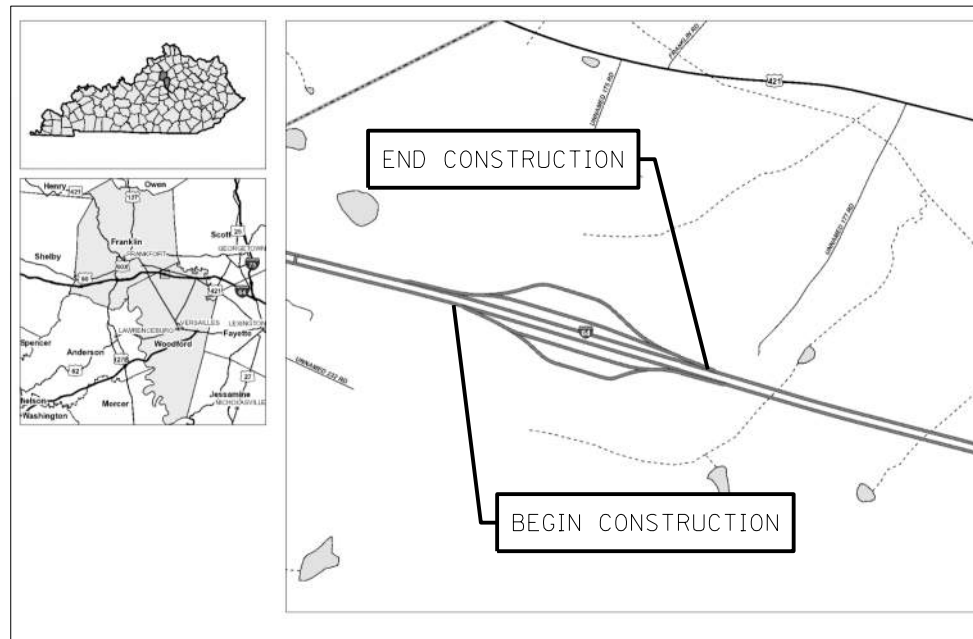
REST AREA EXPANSION (I-64 MP 60) TRUCK PARKING STUDY WOODFORD COUNTY



INDEX OF SHEETS	
SHEET NO.	DESCRIPTION
R1	LAYOUT SHEET
R2	TYPICAL SECTIONS-SUMMARY OF QUANTITIES
R3	OVERVIEW AND PAVEMENT MARKING LAYOUT
R4-R5	PAVEMENT LAYOUT SHEETS
R6	LIGHTING LAYOUT SHEET

SHEETS NOT INCLUDED IN TOTAL SHEETS

STANDARD DRAWINGS	
NUMBER	



**PRELIMINARY
(15% PLANS)**

LAYOUT MAP

FILE NAME: C:\PWORKING\EAST01\02871772\RO01_ID217.DGN

USER: JALBERS
DATE PLOTTED: November 14, 2022

E-SHEET NAME:
MicroStation v8.11.9.919

DESIGN CRITERIA	
CLASS OF HIGHWAY	SPECIAL (INTERSTATE RURAL)
TYPE OF TERRAIN	ROLLING
DESIGN SPEED	SPECIAL RAMPS 55 MPH
REQUIRED NPSD	
REQUIRED PSD	
LEVEL OF SERVICE	N/A
ADT PRESENT ()	
ADT FUTURE ()	
DHV	
D %	
T %	

GEOGRAPHIC COORDINATES	
LATITUDE	38 DEGREES 10 MINUTES 10 SECONDS NORTH
LONGITUDE	84 DEGREES 45 MINUTES 57 SECONDS WEST

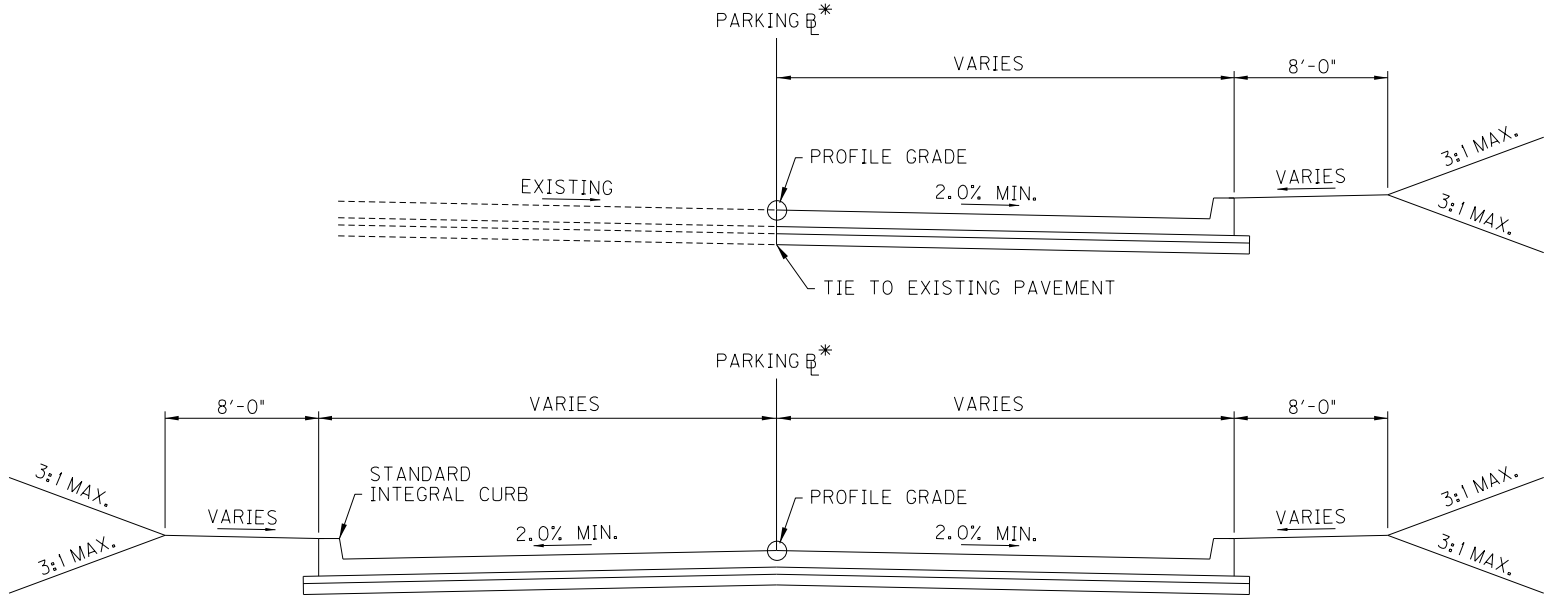
DESIGNED	
% RESTRICTED SD	N/A
LEVEL OF SERVICE	N/A
MAX. DISTANCE W/O PASSING	N/A

LENGTH	ADD'D	DEDUCTED	FOR EQUALITIES	NOT INCLUDED	RAILROAD CROSSINGS NO.	BRIDGES	LENGTH	ADD'D	DEDUCTED	FOR EQUALITIES	NOT INCLUDED	RAILROAD CROSSINGS NO.	BRIDGES	LENGTH	ADD'D	DEDUCTED	FOR EQUALITIES	NOT INCLUDED	RAILROAD CROSSINGS NO.	BRIDGES
3,200			0.0		0.0	0.0														

Commonwealth of Kentucky DEPARTMENT OF HIGHWAYS COUNTY OF WOODFORD	
ITEM NO.	-
PROJECT	TRUCK PARKING STUDY
NUMBER:	2021-04
LETTING DATE:	N/A
RECOMMENDED BY:	PROJECT MANAGER DATE:
PLAN APPROVED BY:	STATE HIGHWAY ENGINEER DATE:

GENERAL AND DRAINAGE SUMMARY

ITEM	DESCRIPTION	UNIT	EB	WB	PROJECT TOTALS
02545	CLEARING AND GRUBBING	LS			1
02650	MAINTAIN & CONTROL TRAFFIC	LS			1
02726	STAKING	LS			1
02568	MOBILIZATION	LS			1
02569	DEMOBILIZATION	LS			1
00522	STORM SEWER PIPE - 18 IN	LF	632	1,097	1,729
01204	PIPE CULVERT HEADWALL-18 IN	EACH	1	0	1
01433	SLOPED BOX OUTLET TYPE 1-18 IN	EACH	2	0	2
01487	CURB BOX INLET TYPE F	EACH	5	7	12
01541	DROP BOX INLET TYPE 10	EACH	2	3	5
01830	STANDARD INTEGRAL CURB	LF	1,642	3,570	5,212
01904	REMOVE CURB	LF	381	0	381
02058	REMOVE PCC PAVEMENT	SOYD	333	6,441	6,774
02200	ROADWAY EXCAVATION	CUYD	4,000	4,000	8,000
02230	EMBANKMENT IN PLACE	CUYD	15,000	18,000	33,000
02701	TEMP SILT FENCE	LF	1,619	2,883	4,502
02720	SIDEWALK-4 IN CONCRETE	SOYD	277	71	348
05986	SEEDING AND PROTECTION	SOYD	10,362	20,866	31,228
05990	SODDING	SOYD	1,690	5,359	7,049
06542	PAVE STRIPING - THERMO - 6 IN W	LF	1,781	4,725	6,506
06546	PAVE STRIPING - THERMO - 12 IN W	LF	60	1084	1,144
20550ND	SAWCUT PAVEMENT	LF	1,164	573	1,737
04714	POLE 120' MTG HT HIGH MAST	EACH	2	4	6
04742	HIGH MAST POLE BASE	EACH	2	4	6
04750	TRANSFORMER BASE	EACH	2	4	6
04761	LIGHTING CONTROL EQUIPMENT	EACH	1	1	2
04798	CONDUIT 3-1/2 IN	LF	550	2,000	2,550
04810	ELECTRICAL JUNCTION BOX	EACH	2	2	4
04820	TRENCHING AND BACKFILLING	LF	550	2,000	2,550
04862	CABLE-NO. 4/3C DUCTED	LF	1,100	4,000	5,100
04899	ELECTRICAL SERVICE	EACH	0	0	0
04939	REMOVE POLE	EACH	2	9	11
04941	REMOVE POLE BASE	EACH	2	9	11
24589ED	LED LUMINAIRE	EACH	12	24	36



PARKING SECTION

PARKING AREA PAVEMENT**

CONCRETE PAVEMENT	10" NON-REINFORCED PORTLAND CEMENT CONCRETE PAVEMENT
DGA BASE	4" COMPACTED DENSE GRADED AGGREGATE BASE
ROADBED	8" LIME MODIFIED ROADBED

PAVING SUMMARY

ITEM CODE	ITEM	NOTES	UNIT	EB	WB	TOTAL PROJECT
00001	DGA BASE		TON	1,264	3,589	4,853
00013	LIME STABILIZED ROADBED		SOYD	6,319	17,944	24,263
02069	JPC PAVEMENT-10 IN		SOYD	5,893	15,675	21,568

PAVING AREAS

ITEM CODE	ITEM	NOTES	DEPTH (inches)	S Q U A R E Y A R D S		TOTAL PROJECT
				EB	WB	
00001	DGA BASE		4.00	6,319	17,944	24,263
00013	LIME STABILIZED ROADBED		8.00	6,319	17,944	24,263
02069	JPC PAVEMENT-10 IN		10.00	5,893	15,675	21,568

* - RAMP AND PARKING BASELINES NOT DEFINED IN THIS SET. BASELINES WILL BE DETERMINED DURING SUBSEQUENT DESIGN PHASE.

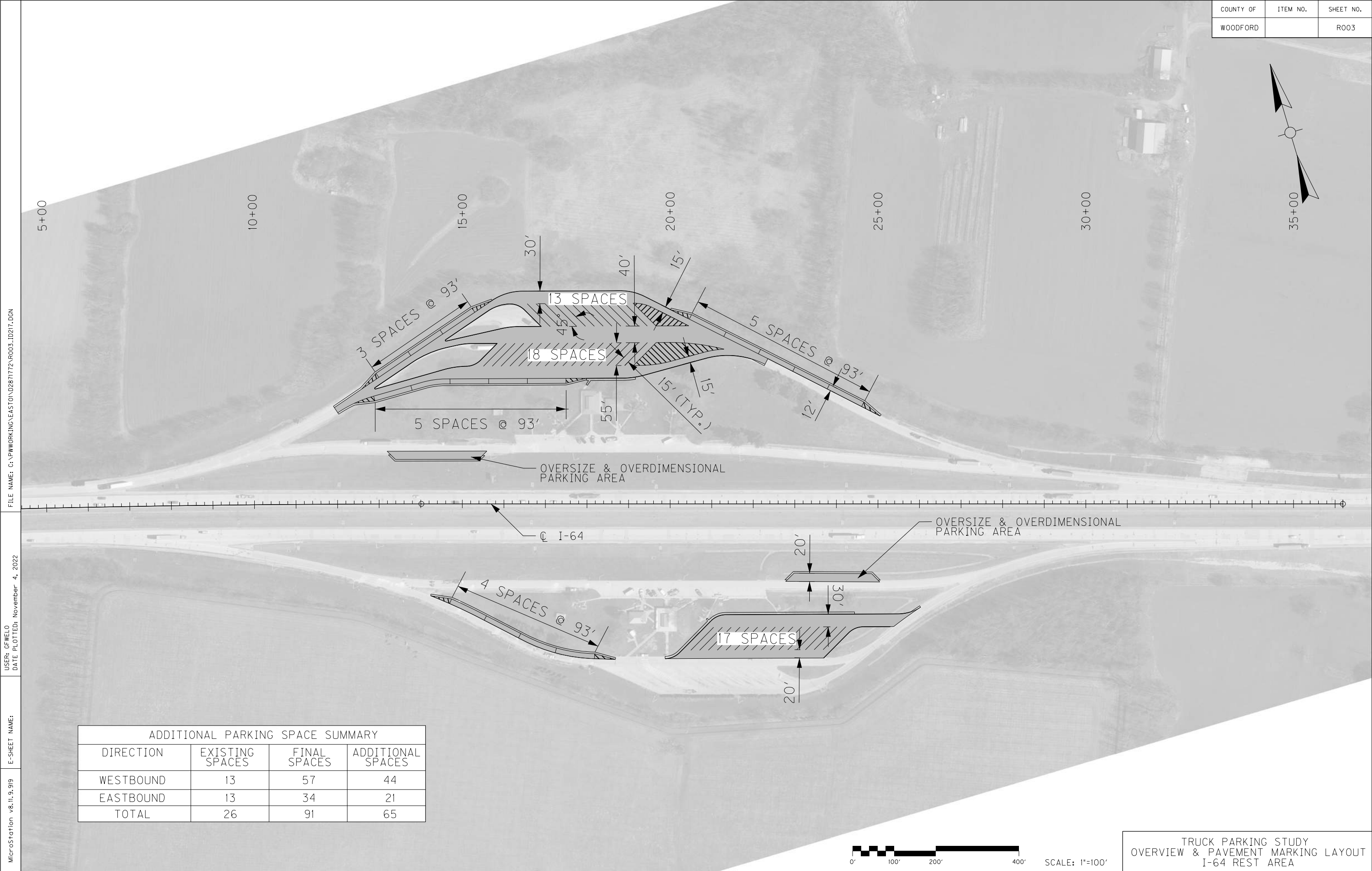
** - PRELIMINARY PAVEMENT DESIGNS ARE BASED ON PAVEMENT DESIGNS UTILIZED AT OTHER KYTC REST AREAS. SITE SPECIFIC PAVEMENT DESIGN WILL BE COMPLETED DURING SUBSEQUENT DESIGN PHASE.

SCALE: 1"=

TRUCK PARKING STUDY
TYPICAL SECTIONS & QUANTITIES
I-64 REST AREA EXPANSION

FILE NAME: C:\PWORKING\EA5T01\0287172A\RO02_ID217.DGN
 USER: GFWELO
 DATE PLOTTED: November 14, 2022
 E-SHEET NAME:
 MicroStation v8.11.9.919

COUNTY OF	ITEM NO.	SHEET NO.
WOODFORD		RO03



FILE NAME: C:\PWORKING\EA5T01\02871772\RO03_ID217.DGN

USER: GFWELO
DATE PLOTTED: November 4, 2022

E-SHEET NAME:

MicroStation v8.11.9.919

ADDITIONAL PARKING SPACE SUMMARY			
DIRECTION	EXISTING SPACES	FINAL SPACES	ADDITIONAL SPACES
WESTBOUND	13	57	44
EASTBOUND	13	34	21
TOTAL	26	91	65

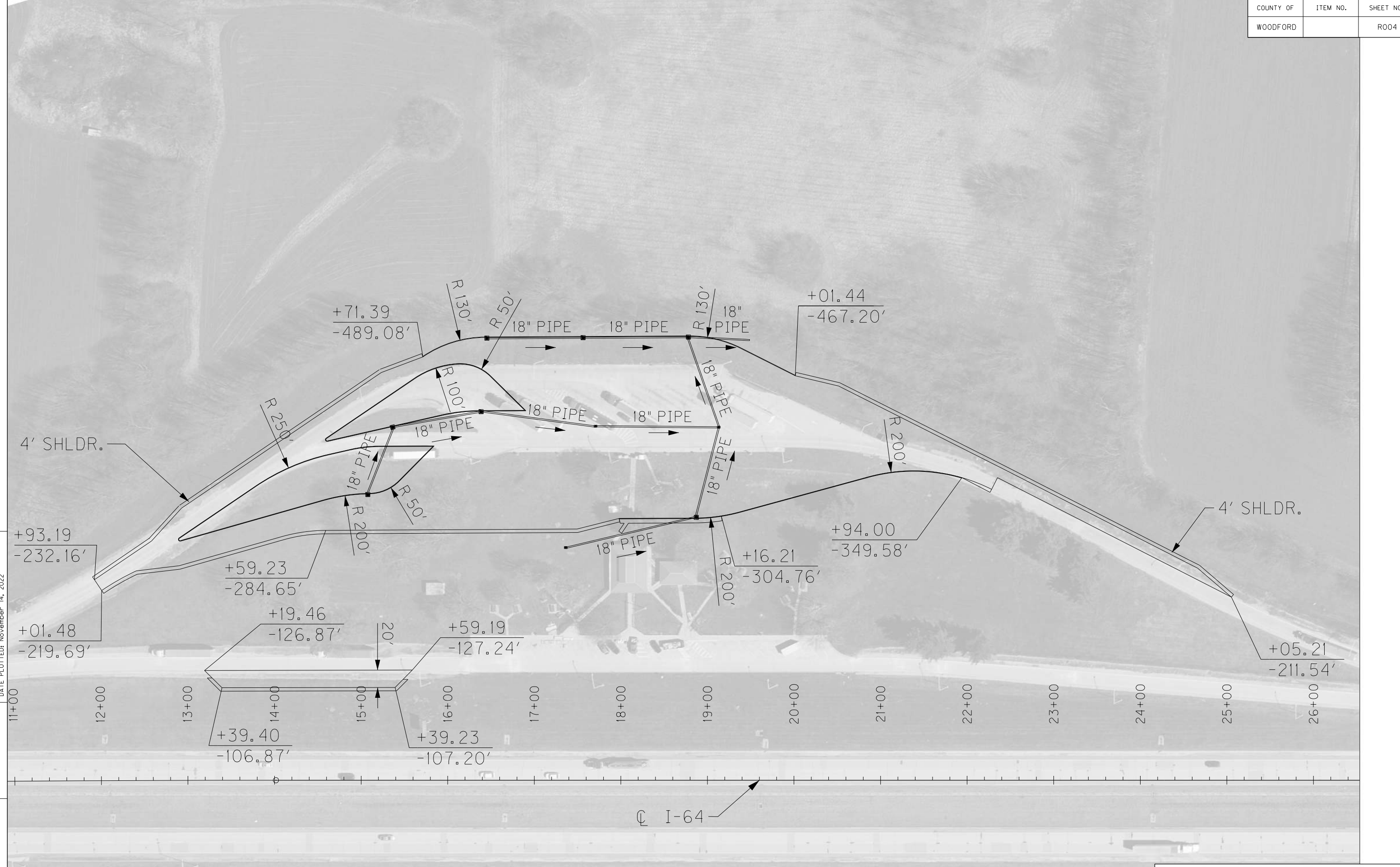


SCALE: 1"=100'

TRUCK PARKING STUDY
OVERVIEW & PAVEMENT MARKING LAYOUT
I-64 REST AREA

COUNTY OF	ITEM NO.	SHEET NO.
WOODFORD		RO04

FILE NAME: C:\PWORKING\EA5T01\02871772\RO04_ID217.DGN
 USER: GFWELO
 DATE PLOTTED: November 14, 2022
 E-SHEET NAME:
 MicroStation v8.11.9.919



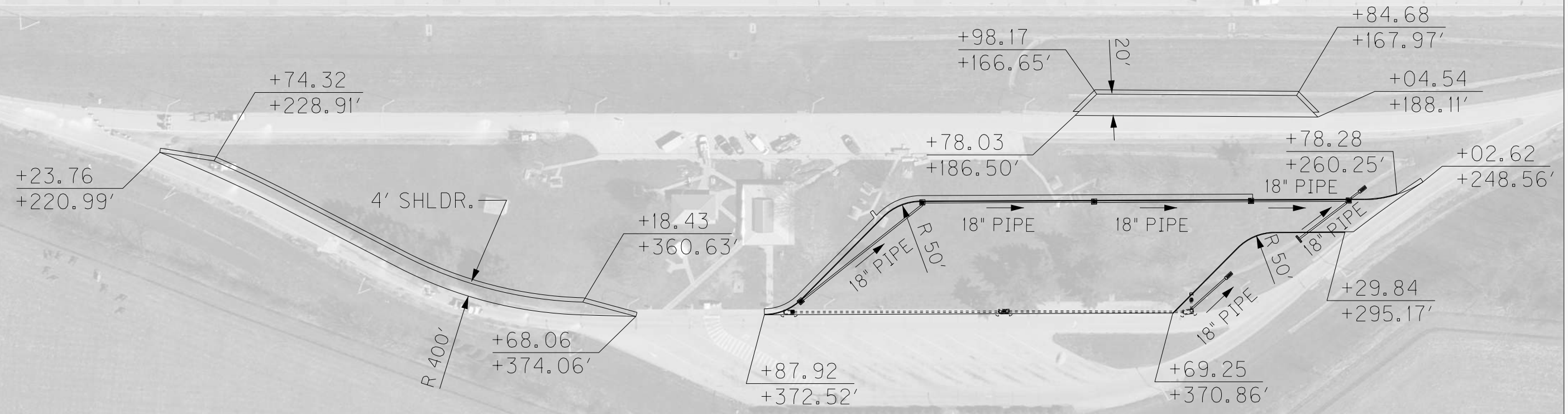
SCALE: 1" = 50'

TRUCK PARKING STUDY
 PAVEMENT LAYOUT SHEET (1 OF 2)
 I-64 REST AREA

COUNTY OF	ITEM NO.	SHEET NO.
WOODFORD		R005

12+00 13+00 14+00 15+00 16+00 17+00 18+00 19+00 20+00 21+00 22+00 23+00 24+00 25+00 26+00 27+00

☉ I-64



FILE NAME: C:\PWORKING\EA\ST01\0287172\RO05_ID217.DGN

USER: GFVELO
DATE PLOTTED: November 14, 2022

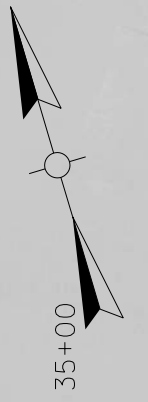
E-SHEET NAME:

MicroStation v8.11.9.919

SCALE: 1" = 50'

TRUCK PARKING STUDY
PAVEMENT LAYOUT SHEET (2 OF 2)
I-64 REST AREA

COUNTY OF	ITEM NO.	SHEET NO.
WOODFORD		R006



5+00

10+00

15+00

20+00

25+00

30+00

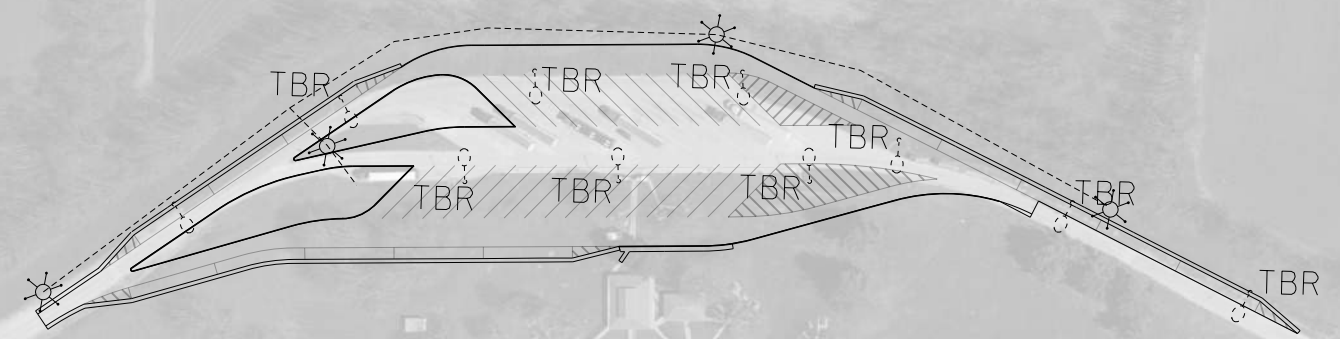
35+00

FILE NAME: C:\PWORKING\EA\ST01\02871772\RO06_ID217.DGN

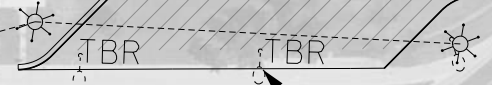
USER: GFWELO
DATE PLOTTED: November 14, 2022

E-SHEET NAME:

MicroStation v8.11.9.919



Q I-64



TO BE REMOVED
(TBR)

NOTE:
LOCATION OF EXISTING LIGHTING CONDUITS NOT AVAILABLE FROM RECORD DRAWINGS. LOCATION OF NEW CONDUIT TIE-IN AS SHOWN ARE APPROXIMATE.



TRUCK PARKING STUDY
LIGHTING DESIGN SHEET
I-64 REST AREA

COUNTY OF	ITEM NO.	SHEET NO.
BOONE	-	RO01

Commonwealth of Kentucky DEPARTMENT OF HIGHWAYS

PLANS OF PROPOSED PROJECT

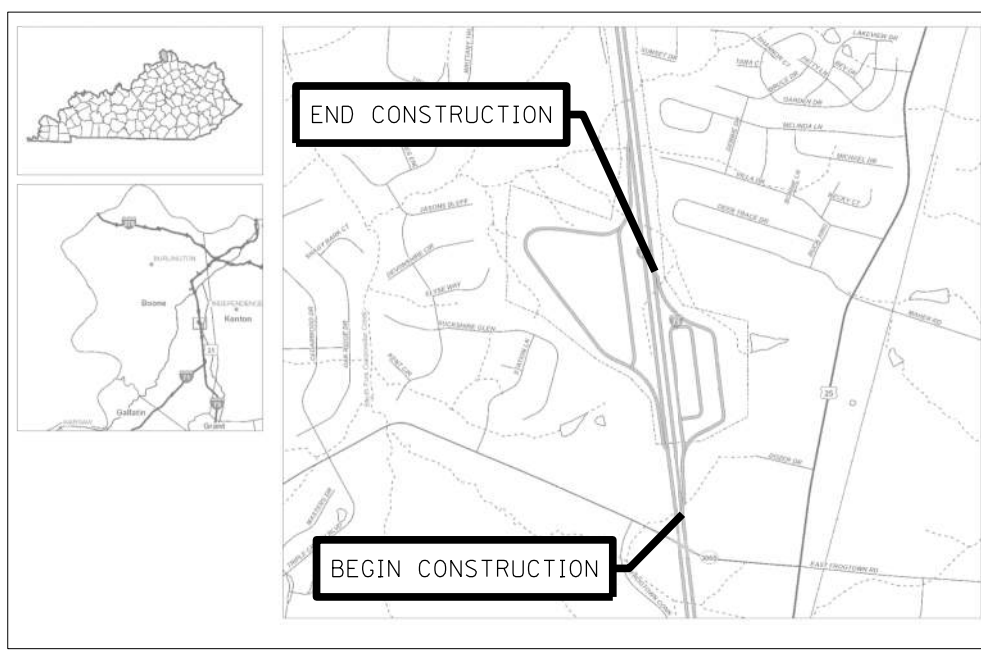
REST AREA EXPANSION (I-75 MP 176) TRUCK PARKING STUDY BOONE COUNTY



INDEX OF SHEETS	
SHEET NO.	DESCRIPTION
R1	LAYOUT SHEET
R2	TYPICAL SECTIONS-SUMMARY OF QUANTITIES
R3A-R3B	OVERVIEW AND PAVEMENT MARKING LAYOUT
R4-R6	PAVEMENT LAYOUT SHEETS
R7	LIGHTING LAYOUT SHEET

SHEETS NOT INCLUDED IN TOTAL SHEETS

STANDARD DRAWINGS	
NUMBER	



**PRELIMINARY
(15% PLANS)**

LAYOUT MAP

FILE NAME: C:\PWORKING\EASTO\02408235\RO01_ID230.DGN

USER: JALBERS
DATE PLOTTED: December 28, 2023

E-SHEET NAME:
MicroStation v8.11.9.919

DESIGN CRITERIA	
CLASS OF HIGHWAY	SPECIAL (INTERSTATE RURAL)
TYPE OF TERRAIN	ROLLING
DESIGN SPEED	SPECIAL RAMPS 55 MPH
REQUIRED NPSD	
REQUIRED PSD	
LEVEL OF SERVICE	N/A
ADT PRESENT ()	
ADT FUTURE ()	
DHV	
D %	
T %	

GEOGRAPHIC COORDINATES	
LATITUDE	38 DEGREES 56 MINUTES 16 SECONDS NORTH
LONGITUDE	84 DEGREES 37 MINUTES 55 SECONDS WEST

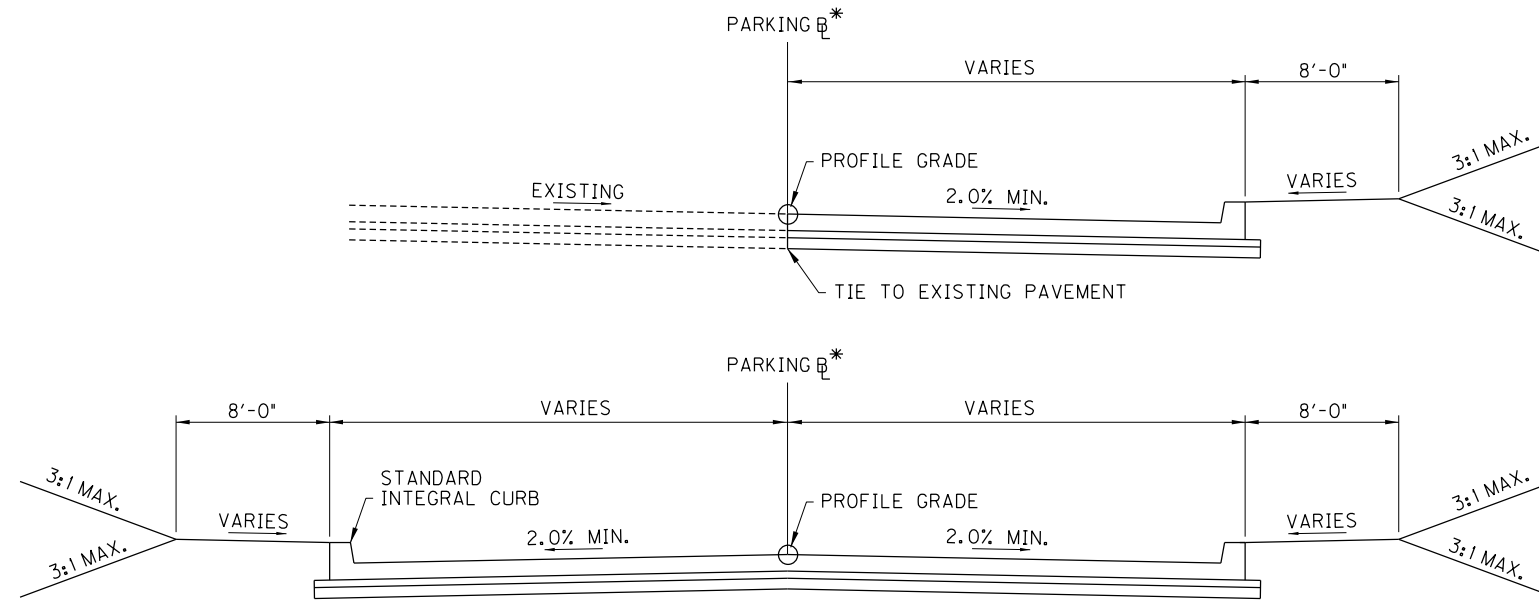
DESIGNED	
LENGTH	2,500 LIN. FT. 0.48 MILES
ADDED FOR EQUALITIES	0.0 LIN. FT.
DEDUCTED	NOT INCLUDED
RAILROAD CROSSINGS NO.	0.0 LIN. FT.
BRIDGES	0.0 LIN. FT.

LENGTH	_____ LIN. FT. _____ MILES	LENGTH	_____ LIN. FT. _____ MILES	LENGTH	_____ LIN. FT. _____ MILES	LENGTH	_____ LIN. FT. _____ MILES
ADDED FOR EQUALITIES	_____ LIN. FT.	ADDED FOR EQUALITIES	_____ LIN. FT.	ADDED FOR EQUALITIES	_____ LIN. FT.	ADDED FOR EQUALITIES	_____ LIN. FT.
DEDUCTED	NOT INCLUDED	DEDUCTED	NOT INCLUDED	DEDUCTED	NOT INCLUDED	DEDUCTED	NOT INCLUDED
RAILROAD CROSSINGS NO.	_____ LIN. FT.	RAILROAD CROSSINGS NO.	_____ LIN. FT.	RAILROAD CROSSINGS NO.	_____ LIN. FT.	RAILROAD CROSSINGS NO.	_____ LIN. FT.
BRIDGES	_____ LIN. FT.	BRIDGES	_____ LIN. FT.	BRIDGES	_____ LIN. FT.	BRIDGES	_____ LIN. FT.

Commonwealth of Kentucky DEPARTMENT OF HIGHWAYS COUNTY OF	
BOONE	
ITEM NO.	_____
PROJECT	TRUCK PARKING STUDY
NUMBER:	2021-04
LETTING DATE:	N/A
RECOMMENDED BY:	_____ PROJECT MANAGER _____ DATE: _____
PLAN APPROVED BY:	_____ STATE HIGHWAY ENGINEER _____ DATE: _____

GENERAL AND DRAINAGE SUMMARY

ITEM	DESCRIPTION	UNIT	NB	SB	PROJECT TOTALS
02545	CLEARING AND GRUBBING	LS			1
02650	MAINTAIN & CONTROL TRAFFIC	LS			1
02726	STAKING	LS			1
02568	MOBILIZATION	LS			1
02569	DEMobilIZATION	LS			1
00522	STORM SEWER PIPE - 18 IN	LF	1,465	1,610	3,075
00522	STORM SEWER PIPE - 24 IN	LF	0	265	265
01487	CURB BOX INLET TYPE F	EACH	9	10	19
01541	DROP BOX INLET TYPE 10	EACH	0	3	3
01577	DROP BOX INLET TYPE 14	EACH	0	3	3
01767	MANHOLE TYPE C	EACH	0	1	1
01830	STANDARD INTEGRAL CURB	LF	2,150	6,970	9,120
01904	REMOVE CURB	LF	600	1,350	1,950
02058	REMOVE PCC PAVEMENT	SOYD	7,900	10,100	18,000
02200	ROADWAY EXCAVATION	CUYD	12,100	57,800	69,900
02230	EMBANKMENT IN PLACE	CUYD	1,200	5,300	6,500
02483	CHANNEL LINING CLASS II	TON	0	218	218
02701	TEMP SILT FENCE	LF	5,700	9,100	14,800
02720	SIDEWALK-4 IN CONCRETE	SOYD	785	1,182	1,967
05986	SEEDING AND PROTECTION	SOYD	20,300	23,100	43,400
05990	SODDING	SOYD	3,300	4,700	8,000
06542	PAVE STRIPING - THERMO - 6 IN W	LF	4,000	15,100	19,100
06546	PAVE STRIPING - THERMO - 12 IN W	LF	400	5,500	5,900
20550ND	SAWCUT PAVEMENT	LF	1,250	1,850	3,100
04714	POLE 120' MTG HT HIGH MAST	EACH	3	8	11
04742	HIGH MAST POLE BASE	EACH	3	8	11
04750	TRANSFORMER BASE	EACH	3	8	11
04761	LIGHTING CONTROL EQUIPMENT	EACH	1	1	2
04798	CONDUIT 3-1/2 IN	LF	3,500	6,000	9,500
04810	ELECTRICAL JUNCTION BOX	EACH	2	2	4
04820	TRENCHING AND BACKFILLING	LF	3,500	6,000	9,500
04862	CABLE-NO. 4/3C DUCTED	LF	7,000	12,000	19,000
04899	ELECTRICAL SERVICE	EACH	0	0	0
04939	REMOVE POLE	EACH	8	7	15
04941	REMOVE POLE BASE	EACH	8	7	15
24589ED	LED LUMINAIRE	EACH	18	48	66



PARKING SECTION

PARKING AREA PAVEMENT**

CONCRETE PAVEMENT	10" NON-REINFORCED PORTLAND CEMENT CONCRETE PAVEMENT
DGA BASE	4" COMPACTED DENSE GRADED AGGREGATE BASE
ROADBED	8" LIME MODIFIED ROADBED

PAVING SUMMARY

ITEM CODE	ITEM	NOTES	UNIT	NB	SB	TOTAL PROJECT
00001	DGA BASE		TON	3,137	8,622	11,789
00013	LIME STABILIZED ROADBED		SOYD	15,835	43,108	58,943
02069	JPC PAVEMENT-10 IN		SOYD	14,964	41,150	56,114

PAVING AREAS

ITEM CODE	ITEM	NOTES	DEPTH (inches)	SQUARE YARDS		TOTAL PROJECT
				NB	SB	
00001	DGA BASE		4.00	15,835	43,108	58,943
00013	LIME STABILIZED ROADBED		8.00	15,835	43,108	58,943
02069	JPC PAVEMENT-10 IN		10.00	14,964	41,150	56,114

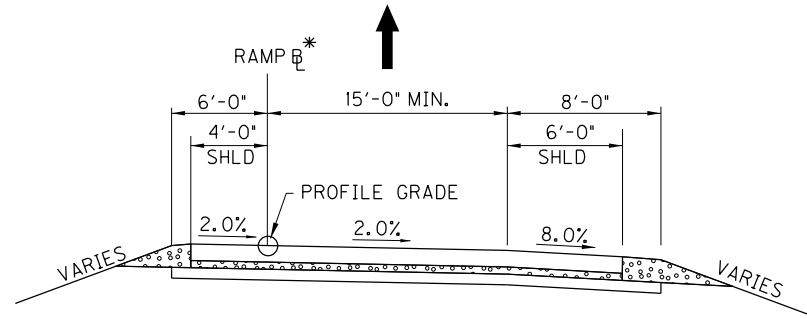
- RAMP AND PARKING BASELINES NOT DEFINED IN THIS SET. BASELINES WILL BE DETERMINED DURING SUBSEQUENT DESIGN PHASE.
- ** - PRELIMINARY PAVEMENT DESIGNS ARE BASED ON PAVEMENT DESIGNS UTILIZED AT OTHER KYTC REST AREAS. SITE SPECIFIC PAVEMENT DESIGN WILL BE COMPLETED DURING SUBSEQUENT DESIGN PHASE.

SCALE: 1"=

TRUCK PARKING STUDY
TYPICAL SECTION & QUANTITIES
I-75 REST AREA EXPANSION

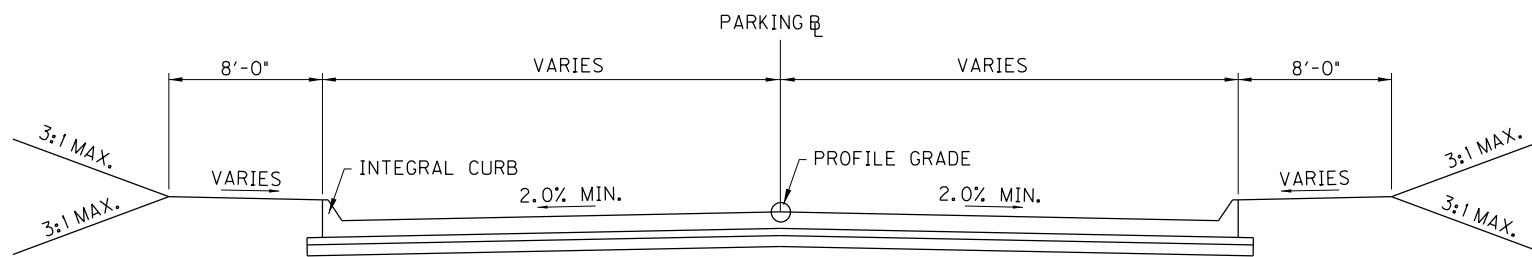
GENERAL AND DRAINAGE SUMMARY

ITEM	DESCRIPTION	UNIT	NB	SB	PROJECT TOTALS
02545	CLEARING AND GRUBBING	LS			1
02650	MAINTAIN & CONTROL TRAFFIC	LS			1
02726	STAKING	LS			1
02568	MOBILIZATION	LS			1
02569	DEMOBILIZATION	LS			1
00522	STORM SEWER PIPE - 18 IN	LF	1,313	1,302	2,615
01433	SLOPED BOX OUTLET TYPE 1-18 IN	EACH	1	0	1
01456	CURB BOX INLET TYPE A	EACH	4	10	14
01541	DROP BOX INLET TYPE 10	EACH	1	0	1
01830	STANDARS INTEGRAL CURB	LF	2,095	2,527	4,622
01904	REMOVE CURB	LF	1,502	246	1,748
02058	REMOVE PCC PAVEMENT	SOYD	0	4,633	4,633
02200	ROADWAY EXCAVATION	CUYD	5,000	9,000	14,000
02230	EMBANKMENT IN PLACE	CUYD	6,000	90,000	96,000
02701	TEMP SILT FENCE	LF	4,766	5,047	9,813
02720	SIDEWALK-4 IN CONCRETE	SOYD	156	364	520
05986	SEEDING AND PROTECTION	SOYD	14,673	7,451	22,124
05990	SODDING	SOYD	2,523	3,663	6,186
06542	PAVE STRIPING-THERMO-6 IN W	LF	3,472	2,688	6,160
08018	RETAINING WALL	SOFT	0	15,000	15,000
20550ND	SAWCUT PAVEMENT	LF	1,597	285	1,882
04714	POLE 120' MTG HT HIGH MAST	EACH	3	3	6
04742	HIGH MAST POLE BASE	EACH	3	3	6
04750	TRANSFORMER BASE	EACH	3	3	6
04761	LIGHTING CONTROL EQUIPMENT	EACH	1	1	2
04798	CONDUIT 3-1/2 IN	LF	1,500	1,500	3,000
04810	ELECTRICAL JUNCTION BOX	EACH	2	2	4
04820	TRENCHING AND BACKFILLING	LF	1,500	1,500	3,000
04862	CABLE-NO. 4/3C DUCTED	LF	3000	3000	6000
04899	ELECTRICAL SERVICE	EACH	0	0	0
04939	REMOVE POLE	EACH	4	1	5
04941	REMOVE POLE BASE	EACH	4	1	5
24589ED	LED LUMINAIRE	EACH	18	18	36



RAMP SECTION

- RAMP PAVEMENT ****
- CONCRETE PAVEMENT — 11" NON -REINFORCED PORTLAND CEMENT CONCRETE PAVEMENT
 - DGA BASE — 6" COMPACTED DENSE GRADED AGGREGATE BASE
 - ROADBED — 8" LIME MODIFIED ROADBED
- SHOULDERS ****
- CONCRETE PAVEMENT — 11" NON -REINFORCED PORTLAND CEMENT CONCRETE PAVEMENT
 - DGA BASE — 6" COMPACTED DENSE GRADED AGGREGATE BASE
 - ROADBED — 8" LIME MODIFIED ROADBED



PARKING SECTION

- PARKING AREA PAVEMENT**
- CONCRETE PAVEMENT — 10" NON -REINFORCED PORTLAND CEMENT CONCRETE PAVEMENT
 - DGA BASE — 4" COMPACTED DENSE GRADED AGGREGATE BASE
 - ROADBED — 8" LIME MODIFIED ROADBED

PAVING SUMMARY

ITEM CODE	ITEM	NOTES	UNIT	NB	SB	TOTAL PROJECT
00001	DGA BASE		TON	2,443	2,179	4,622
00013	LIME STABILIZED ROADBED		SQYD	12,216	10,896	23,112
02069	JPC PAVEMENT-10 IN		SQYD	11,878	10,412	22,290

PAVING AREAS

ITEM CODE	ITEM	NOTES	DEPTH (inches)	S Q U A R E Y A R D S		TOTAL PROJECT
				NB	SB	
00001	DGA BASE		4.00	12,216	10,896	23,112
00013	LIME STABILIZED ROADBED		8.00	12,216	10,896	23,112
02069	JPC PAVEMENT-10 IN		10.00	11,878	10,412	22,290

- * - RAMP AND PARKING BASELINES NOT DEFINED IN THIS SET. BASELINES WILL BE DETERMINED DURING SUBSEQUENT DESIGN PHASE.
- ** - PRELIMINARY PAVEMENT DESIGNS ARE BASED ON PAVEMENT DESIGNS UTILIZED AT OTHER KYTC REST AREAS. SITE SPECIFIC PAVEMENT DESIGN WILL BE COMPLETED DURING SUBSEQUENT DESIGN PHASE.

SCALE: 1"=

TRUCK PARKING STUDY
TYPICAL SECTIONS & QUANTITIES
I-71 REST AREA EXPANSION

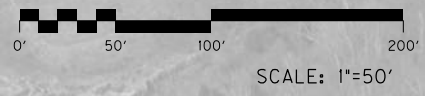
6+00 7+00 8+00 9+00 10+00 11+00 12+00 13+00 14+00 15+00 16+00 17+00 18+00 19+00 20+00 21+00

FILE NAME: C:\PWORKING\EAST01\02408235\RO03AR_ID230.DGN
 USER: JALBERS
 DATE PLOTTED: February 22, 2024
 E-SHEET NAME:
 MicroStation v8.11.9.919

OVERSIZE &
OVERDIMENSIONAL
PARKING AREA



DIRECTION	EX. SPACES	FINAL SPACES	ADD'L SPACES
STANDARD	54	138	84
OVERSIZE	0	1	1
TOTAL	54	139	85



TRUCK PARKING STUDY
 OVERVIEW & PAVEMENT MARKING LAYOUT
 I-75 REST AREA NB EXPANSION

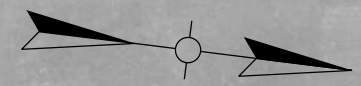
ADDITIONAL TRUCK PARKING SPACE SUMMARY			
DIRECTION	EXISTING SPACES	FINAL SPACES	ADDITIONAL SPACES
STANDARD	67	169	102
OVERSIZE	0	1	1
TOTAL	67	170	103



NO CHANGE FOR CAR PARKING SPACES



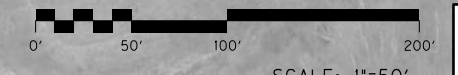
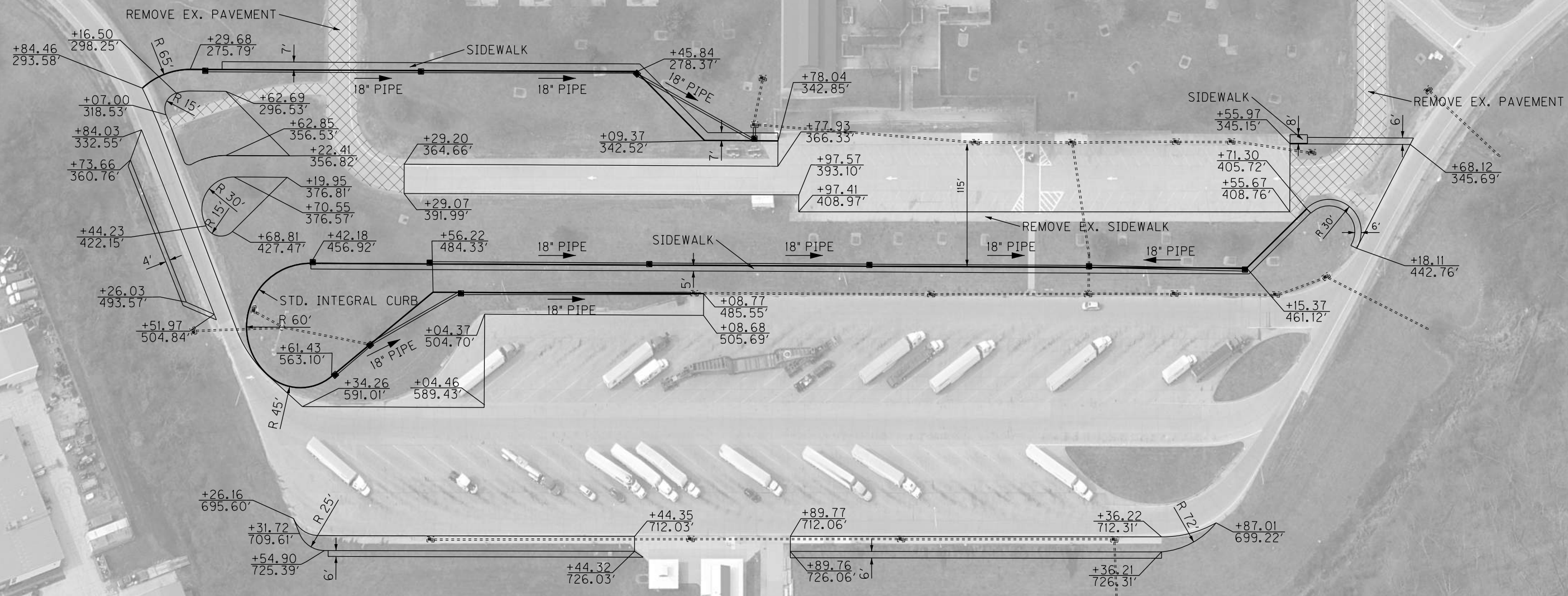
MicroStation v8.11.9.919
 E-SHEET NAME:
 USER: BSAYLOR
 DATE PLOTTED: December 28, 2023
 FILE NAME: C:\PWORKING\EAST01\02408235\R003B.ID230.DGN



6+00 7+00 8+00 9+00 10+00 11+00 12+00 13+00 14+00 15+00 16+00 17+00 18+00 19+00 20+00 21+00

Q I-75

FILE NAME: C:\PWORKING\EA\ST01\02408235\R004R_ID230.DGN
 USER: BSAYLOR
 DATE PLOTTED: December 14, 2023
 E-SHEET NAME:
 MicroStation v8.11.9.919



SCALE: 1"=50'

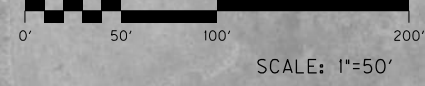
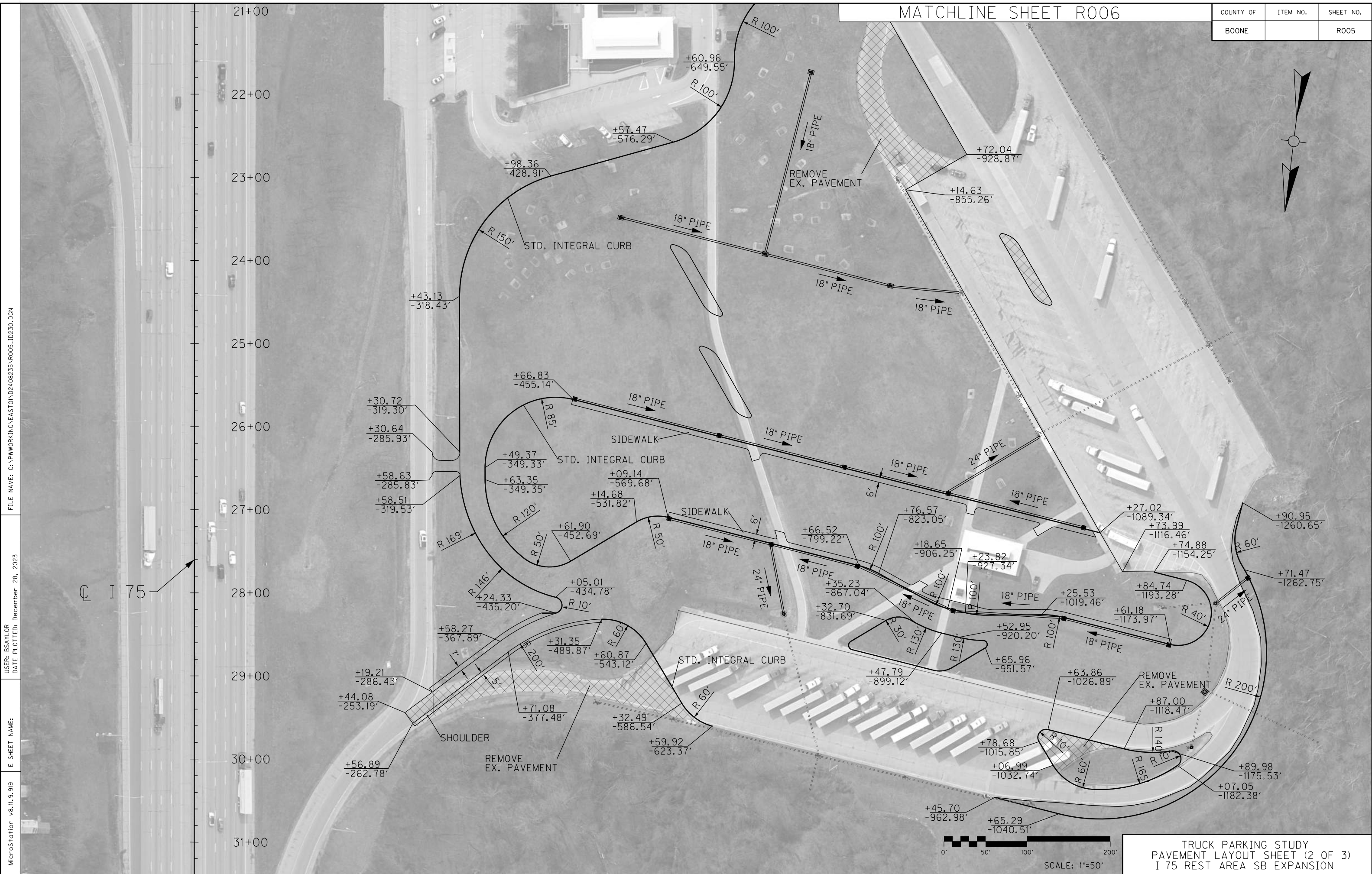
TRUCK PARKING STUDY
 PAVEMENT LAYOUT SHEET (1 OF 3)
 I-75 REST AREA NB EXPANSION

MATCHLINE SHEET R006

COUNTY OF	ITEM NO.	SHEET NO.
BOONE		R005



FILE NAME: C:\PWORK\IND\EA\ST01\02408235\R005_1D230.DGN
 USER: BSAYLOR
 DATE PLOTTED: December 28, 2023
 E SHEET NAME:
 MicroStation v8.11.9.919



TRUCK PARKING STUDY
 PAVEMENT LAYOUT SHEET (2 OF 3)
 I 75 REST AREA SB EXPANSION

COUNTY OF	ITEM NO.	SHEET NO.
BOONE		R006

MicroStation v8.11.9.919 E SHEET NAME: I 75 REST AREA SB EXPANSION DATE PLOTTED: December 28, 2023 USER: BSAYLOR FILE NAME: C:\PWORKING\EA5T01\02408235\RO06_ID230.DGN



Q I 75

12+00
13+00
14+00
15+00
16+00
17+00
18+00
19+00
20+00
21+00
22+00

STD. INTEGRAL CURB

+84.28
-704.68'
+13.72
-698.60'
+33.27
-772.86'
+48.35
-799.58'
+59.40
-774.04'
+63.04
-788.47'

R 100'
R 10'

MATCHLINE SHEET R005



SCALE: 1"=50'

TRUCK PARKING STUDY
PAVEMENT LAYOUT SHEET (3 OF 3)
I 75 REST AREA SB EXPANSION

COUNTY OF	ITEM NO.	SHEET NO.
BOONE		RO07

FILE NAME: C:\PWORKING\EAST01\02408235\RO07_1.D230.DGN

USER: BSAYLOR
DATE PLOTTED: December 28, 2023

E-SHEET NAME:

MicroStation v8.11.9.919



TRUCK PARKING STUDY
LIGHTING LAYOUT
I-75 REST AREA EXPANSION
SCALE: 1"=250'

Estimate ID152 Truck

Estimated Cost:\$2,086,578.41

Contingency: 30.00%

Estimated Total: \$2,712,551.93

ID152 TRUCK PARKING
BULLITT COUNTY

Base Date: 11/14/22

Spec Year: 08

Unit System: E

Work Type: GRADE & DRAIN

Highway Type: STATE

Urban/Rural Type: RURAL

Season: SPRING

County: BULLITT

Latitude of Midpoint: 0

Longitude of Midpoint: 0

District:

Federal Project Number: Truck Parking

State Project Number: Truck Parking

<u>Line #</u>	<u>Item Number</u>	<u>Quantity</u>	<u>Units</u>	<u>Unit Price</u>	<u>Extension</u>
<u>Description</u>					
<u>Supplemental Description</u>					

Group 0001: PAVING

0005	00003	2,364.000	TON	\$21.05000	\$49,762.20
CRUSHED STONE BASE					
0006	00013	11,820.000	SQYD	\$3.80000	\$44,916.00
LIME STABILIZED ROADBED					
0007	02069	11,117.000	SQYD	\$95.00000	\$1,056,115.00
JPC PAVEMENT-10 IN					
Total for Group 0001:\$1,150,793.20					

Group 0002: ROADWAY

0040	02545	1.000	LS	\$10,000.00000	\$10,000.00
CLEARING AND GRUBBING					
0041	02650	1.000	LS	\$20,000.00000	\$20,000.00
MAINTAIN & CONTROL TRAFFIC					
0042	02726	1.000	LS	\$30,000.00000	\$30,000.00
STAKING					
0043	02568	1.000	LS	\$45,000.00000	\$45,000.00
MOBILIZATION					
0044	02569	1.000	LS	\$90,000.00000	\$90,000.00
DEMOBILIZATION					
0045	01830	1,425.000	LF	\$24.00000	\$34,200.00
STANDARD INTEGRAL CURB					
0046	01904	1,900.000	LF	\$10.50000	\$19,950.00
REMOVE CURB					
0047	02058	880.000	SQYD	\$20.02923	\$17,625.72
REMOVE PCC PAVEMENT					
0049	02200	8,300.000	CUYD	\$17.77374	\$147,522.04
ROADWAY EXCAVATION					
0051	02701	2,800.000	LF	\$1.95351	\$5,469.83
TEMP SILT FENCE					
0053	05985	20,000.000	SQYD	\$0.76033	\$15,206.60
SEEDING AND PROTECTION					
0054	05990	3,000.000	SQYD	\$6.45398	\$19,361.94
SODDING					
0055	20550ND	2,473.000	LF	\$2.12325	\$5,250.80
SAWCUT PAVEMENT					
0056	06542	4,650.000	LF	\$1.20197	\$5,589.16
PAVE STRIPING-THERMO-6 IN W					
0057	06546	750.000	LF	\$3.25000	\$2,437.50
PAVE STRIPING-THERMO-12 IN W					

<u>Line #</u>	<u>Item Number</u>	<u>Quantity</u>	<u>Units</u>	<u>Unit Price</u>	<u>Extension</u>
<u>Description</u>					
<u>Supplemental Description</u>					

0085	02230	500.000	CUYD	\$38.80649	\$19,403.25
EMBANKMENT IN PLACE					

Total for Group 0002:\$487,016.84

Group 0003: DRAINAGE

0025	00522	750.000	LF	\$64.86645	\$48,649.84
STORM SEWER PIPE-18 IN					

0028	01371	1.000	EACH	\$1,200.00000	\$1,200.00
METAL END SECTION TY 1-18 IN					

0029	01487	6.000	EACH	\$4,250.00000	\$25,500.00
CURB BOX INLET TYPE F					

0030	01641	1.000	EACH	\$2,000.00000	\$2,000.00
JUNCTION BOX-15 IN					

Total for Group 0003:\$77,349.84

Group 0004: LIGHTING

0069	04714	5.000	EACH	\$40,000.00000	\$200,000.00
POLE 120 FT MTG HT HIGH MAST					

0072	04742	5.000	EACH	\$2,000.00000	\$10,000.00
POLE BASE-HIGH MAST					

0073	04750	5.000	EACH	\$1,004.39312	\$5,021.97
TRANSFORMER BASE					

0077	04810	1.000	EACH	\$1,900.00000	\$1,900.00
ELECTRICAL JUNCTION BOX					

0079	04862	4,000.000	LF	\$5.07000	\$20,280.00
CABLE-NO. 4/3C DUCTED					

0082	04939	10.000	EACH	\$400.00000	\$4,000.00
REMOVE POLE					

0083	04941	10.000	EACH	\$500.00000	\$5,000.00
REMOVE POLE BASE					

0084	24589ED	30.000	EACH	\$729.71913	\$21,891.57
LED LUMINAIRE					

0086	04820	2,000.000	LF	\$5.27683	\$10,553.66
TRENCHING AND BACKFILLING					

0087	04797	2,000.000	LF	\$33.50632	\$67,012.64
CONDUIT-3 IN					

0088	04761	1.000	EACH	\$25,758.69325	\$25,758.69
LIGHTING CONTROL EQUIPMENT					

Total for Group 0004:\$371,418.53

Estimate ID175Truck Park

Estimated Cost:\$6,383,136.61

Contingency: 30.00%

Estimated Total: \$8,298,077.59

ID175 TRUCK PARKING
OLDHAM COUNTY

Base Date: 11/14/22

Spec Year: 08

Unit System: E

Work Type: GRADE & DRAIN

Highway Type: STATE

Urban/Rural Type: RURAL

Season: SPRING

County: OLDHAM

Latitude of Midpoint: 0

Longitude of Midpoint: 0

District:

Federal Project Number: Truck Parking

State Project Number: Truck Parking

<u>Line #</u>	<u>Item Number</u>	<u>Quantity</u>	<u>Units</u>	<u>Unit Price</u>	<u>Extension</u>
<u>Description</u>					
<u>Supplemental Description</u>					

Group 0001: PAVING

0006	00013	23,113.000	SQYD	\$3.80000	\$87,829.40
LIME STABILIZED ROADBED					
0007	02069	22,290.000	SQYD	\$95.00000	\$2,117,550.00
JPC PAVEMENT-10 IN					
0087	00003	4,623.000	TON	\$21.05000	\$97,314.15
CRUSHED STONE BASE					

Total for Group 0001:\$2,302,693.55

Group 0002: ROADWAY

0040	02545	1.000	LS	\$10,000.00000	\$10,000.00
CLEARING AND GRUBBING					
0041	02650	1.000	LS	\$20,000.00000	\$20,000.00
MAINTAIN & CONTROL TRAFFIC					
0042	02726	1.000	LS	\$120,000.00000	\$120,000.00
STAKING					
0043	02568	1.000	LS	\$180,000.00000	\$180,000.00
MOBILIZATION					
0044	02569	1.000	LS	\$360,000.00000	\$360,000.00
DEMOBILIZATION					
0049	02200	14,000.000	CUYD	\$15.41024	\$215,743.36
ROADWAY EXCAVATION					
0050	02230	96,000.000	CUYD	\$9.50712	\$912,683.52
EMBANKMENT IN PLACE					
0051	02701	9,813.000	LF	\$1.65470	\$16,237.57
TEMP SILT FENCE					
0053	05985	22,123.000	SQYD	\$0.61486	\$13,602.55
SEEDING AND PROTECTION					
0054	05990	6,186.000	SQYD	\$5.84262	\$36,142.45
SODDING					
0055	20550ND	1,882.000	LF	\$2.31620	\$4,359.09
SAWCUT PAVEMENT					
0056	06542	6,160.000	LF	\$1.16333	\$7,166.11
PAVE STRIPING-THERMO-6 IN W					
0085	01830	4,622.000	LF	\$23.00000	\$106,306.00
STANDARD INTEGRAL CURB					
0105	01904	1,748.000	LF	\$15.00000	\$26,220.00
REMOVE CURB					
0106	02058	4,633.000	SQYD	\$23.63931	\$109,520.92
REMOVE PCC PAVEMENT					

<u>Line #</u>	<u>Item Number</u>	<u>Quantity</u>	<u>Units</u>	<u>Unit Price</u>	<u>Extension</u>
<u>Description</u>					
<u>Supplemental Description</u>					
0107	02720	519.000	SQYD	\$66.19678	\$34,356.13
SIDEWALK-4 IN CONCRETE					
0108	05985	22,123.000	SQYD	\$0.54125	\$11,974.07
SEEDING AND PROTECTION					
0109	08018	15,000.000	SQFT	\$77.18625	\$1,157,793.75
RETAINING WALL					

Total for Group 0002:\$3,342,105.52

Group 0003: DRAINAGE

0024	00522	2,615.000	LF	\$65.92162	\$172,385.04
STORM SEWER PIPE-18 IN					
0092	01456	14.000	EACH	\$5,647.73559	\$79,068.30
CURB BOX INLET TYPE A					
0102	01541	1.000	EACH	\$3,200.00000	\$3,200.00
DROP BOX INLET TYPE 10					
0103	01433	1.000	EACH	\$2,293.76373	\$2,293.76
SLOPED BOX OUTLET TYPE 1-18 IN					

Total for Group 0003:\$256,947.10

Group 0004:

0093	04714	6.000	EACH	\$40,000.00000	\$240,000.00
POLE 120 FT MTG HT HIGH MAST					
0094	04742	6.000	EACH	\$2,000.00000	\$12,000.00
POLE BASE-HIGH MAST					
0095	04750	6.000	EACH	\$1,004.39312	\$6,026.36
TRANSFORMER BASE					
0097	04797	3,000.000	LF	\$33.50632	\$100,518.96
CONDUIT-3 IN					
0099	04862	6,000.000	LF	\$5.07000	\$30,420.00
CABLE-NO. 4/3C DUCTED					
0100	04939	5.000	EACH	\$400.00000	\$2,000.00
REMOVE POLE					
0104	04941	5.000	EACH	\$500.00000	\$2,500.00
REMOVE POLE BASE					
0110	24589ED	36.000	EACH	\$729.71913	\$26,269.89
LED LUMINAIRE					
0112	04810	4.000	EACH	\$1,900.00000	\$7,600.00
ELECTRICAL JUNCTION BOX					
0113	04939	0.000	EACH	\$0.00000	\$0.00
REMOVE POLE					
0114	04820	3,000.000	LF	\$5.15537	\$15,466.11

<u>Line #</u>	<u>Item Number</u>	<u>Quantity</u>	<u>Units</u>	<u>Unit Price</u>	<u>Extension</u>
	<u>Description</u> <u>Supplemental Description</u>				
	TRENCHING AND BACKFILLING				
0115	04761	2.000	EACH	\$19,294.56032	\$38,589.12
	LIGHTING CONTROL EQUIPMENT				

Total for Group 0004:\$481,390.44

Estimate ID217Truck Park

Estimated Cost:\$4,546,733.08

Contingency: 30.00%

Estimated Total: \$5,910,753.00

ID217 TRUCK PARKING
WOODFORD COUNTY

Base Date: 11/14/22

Spec Year: 08

Unit System: E

Work Type: GRADE & DRAIN

Highway Type: STATE

Urban/Rural Type: RURAL

Season: SPRING

County: OLDHAM

Latitude of Midpoint: 0

Longitude of Midpoint: 0

District:

Federal Project Number: Truck Parking

State Project Number: Truck Parking

<u>Line #</u>	<u>Item Number</u>	<u>Quantity</u>	<u>Units</u>	<u>Unit Price</u>	<u>Extension</u>
<u>Description</u>					
<u>Supplemental Description</u>					

Group 0001: PAVING

0006	00013	24,263.000	SQYD	\$3.80000	\$92,199.40
LIME STABILIZED ROADBED					
0007	02069	21,568.000	SQYD	\$95.00000	\$2,048,960.00
JPC PAVEMENT-10 IN					
0087	00003	4,853.000	TON	\$21.05000	\$102,155.65
CRUSHED STONE BASE					

Total for Group 0001:\$2,243,315.05

Group 0002: ROADWAY

0040	02545	1.000	LS	\$10,000.00000	\$10,000.00
CLEARING AND GRUBBING					
0041	02650	1.000	LS	\$20,000.00000	\$20,000.00
MAINTAIN & CONTROL TRAFFIC					
0042	02726	1.000	LS	\$120,000.00000	\$120,000.00
STAKING					
0043	02568	1.000	LS	\$180,000.00000	\$180,000.00
MOBILIZATION					
0044	02569	1.000	LS	\$360,000.00000	\$360,000.00
DEMOBILIZATION					
0049	02200	8,000.000	CUYD	\$17.95323	\$143,625.84
ROADWAY EXCAVATION					
0050	02230	33,000.000	CUYD	\$13.20643	\$435,812.19
EMBANKMENT IN PLACE					
0051	02701	4,502.000	LF	\$1.83448	\$8,258.83
TEMP SILT FENCE					
0055	20550ND	1,737.000	LF	\$2.31814	\$4,026.61
SAWCUT PAVEMENT					
0056	06542	6,506.000	LF	\$1.35674	\$8,826.95
PAVE STRIPING-THERMO-6 IN W					
0085	01830	5,212.000	LF	\$23.00000	\$119,876.00
STANDARD INTEGRAL CURB					
0106	01904	381.000	LF	\$15.00000	\$5,715.00
REMOVE CURB					
0107	02058	6,775.000	SQYD	\$22.17211	\$150,216.05
REMOVE PCC PAVEMENT					
0108	02720	348.000	SQYD	\$71.38791	\$24,842.99
SIDEWALK-4 IN CONCRETE					
0109	05985	31,229.000	SQYD	\$0.59556	\$18,598.74
SEEDING AND PROTECTION					

<u>Line #</u>	<u>Item Number</u>	<u>Quantity</u>	<u>Units</u>	<u>Unit Price</u>	<u>Extension</u>
<u>Description</u>					
<u>Supplemental Description</u>					

0112	05990	7,049.000	SQYD	\$5.95536	\$41,979.33
SODDING					
0113	06546	1,144.000	LF	\$3.47532	\$3,975.77
PAVE STRIPING-THERMO-12 IN W					

Total for Group 0002:\$1,655,754.30

Group 0003: DRAINAGE

0024	00522	1,729.000	LF	\$68.12372	\$117,785.91
STORM SEWER PIPE-18 IN					
0103	01541	5.000	EACH	\$3,200.00000	\$16,000.00
DROP BOX INLET TYPE 10					
0104	01433	2.000	EACH	\$2,230.33062	\$4,460.66
SLOPED BOX OUTLET TYPE 1-18 IN					
0110	01487	12.000	EACH	\$3,574.32863	\$42,891.94
CURB BOX INLET TYPE F					
0111	01204	1.000	EACH	\$1,572.27153	\$1,572.27
PIPE CULVERT HEADWALL-18 IN					

Total for Group 0003:\$182,710.78

Group 0004:

0093	04714	6.000	EACH	\$40,000.00000	\$240,000.00
POLE 120 FT MTG HT HIGH MAST					
0094	04742	6.000	EACH	\$2,000.00000	\$12,000.00
POLE BASE-HIGH MAST					
0097	04797	2,550.000	LF	\$33.50632	\$85,441.12
CONDUIT-3 IN					
0101	04939	11.000	EACH	\$400.00000	\$4,400.00
REMOVE POLE					
0102	24589ED	36.000	EACH	\$729.71913	\$26,269.89
LED LUMINAIRE					
0105	04941	11.000	EACH	\$500.00000	\$5,500.00
REMOVE POLE BASE					
0114	04862	5,100.000	LF	\$5.07000	\$25,857.00
CABLE-NO. 4/3C DUCTED					
0116	04810	4.000	EACH	\$1,900.00000	\$7,600.00
ELECTRICAL JUNCTION BOX					
0117	04761	2.000	EACH	\$19,294.56032	\$38,589.12
LIGHTING CONTROL EQUIPMENT					
0118	04750	6.000	EACH	\$1,004.39312	\$6,026.36
TRANSFORMER BASE					

Estimate ID230 NB Truck

Estimated Cost:\$3,381,063.38

Contingency: 30.00%

Estimated Total: \$4,395,382.39

ID230 TRUCK PARKING
BOONE COUNTY

Base Date: 12/28/23

Spec Year: 08

Unit System: E

Work Type: GRADE & DRAIN

Highway Type: STATE

Urban/Rural Type: RURAL

Season: SPRING

County: BOONE

Latitude of Midpoint: 0

Longitude of Midpoint: 0

District:

Federal Project Number: Truck Parking

State Project Number: Truck Parking

<u>Line #</u>	<u>Item Number</u>	<u>Quantity</u>	<u>Units</u>	<u>Unit Price</u>	<u>Extension</u>
<u>Description</u>					
<u>Supplemental Description</u>					

Group 0001: PAVING

0005	00001	3,137.000	TON	\$41.07569	\$128,854.44
DGA BASE					
0006	00013	15,835.000	SQYD	\$3.80000	\$60,173.00
LIME STABILIZED ROADBED					
0015	02069	14,964.000	SQYD	\$95.00000	\$1,421,580.00
JPC PAVEMENT-10 IN					

Total for Group 0001:\$1,610,607.44

Group 0002: ROADWAY

0040	02545	1.000	LS	\$10,000.00000	\$10,000.00
CLEARING AND GRUBBING					
0041	02650	1.000	LS	\$20,000.00000	\$20,000.00
MAINTAIN & CONTROL TRAFFIC					
0042	02726	1.000	LS	\$52,500.00000	\$52,500.00
STAKING					
0043	02568	1.000	LS	\$126,000.00000	\$126,000.00
MOBILIZATION					
0044	02569	1.000	LS	\$157,500.00000	\$157,500.00
DEMOBILIZATION					
0045	01830	2,150.000	LF	\$24.00000	\$51,600.00
STANDARD INTEGRAL CURB					
0046	01904	600.000	LF	\$10.05587	\$6,033.52
REMOVE CURB					
0047	02058	7,900.000	SQYD	\$42.86895	\$338,664.70
REMOVE PCC PAVEMENT					
0049	02200	12,100.000	CUYD	\$31.03843	\$375,565.00
ROADWAY EXCAVATION					
0050	02230	1,200.000	CUYD	\$11.72026	\$14,064.31
EMBANKMENT IN PLACE					
0052	02720	785.000	SQYD	\$71.56557	\$56,178.97
SIDEWALK-4 IN CONCRETE					
0053	05985	20,300.000	SQYD	\$0.72912	\$14,801.14
SEEDING AND PROTECTION					
0054	05990	3,300.000	SQYD	\$8.03525	\$26,516.32
SODDING					
0055	20550ND	1,250.000	LF	\$4.20933	\$5,261.66
SAWCUT PAVEMENT					

<u>Line #</u>	<u>Item Number</u>	<u>Quantity</u>	<u>Units</u>	<u>Unit Price</u>	<u>Extension</u>
<u>Description</u>					
<u>Supplemental Description</u>					
0056	06542	4,000.000	LF	\$1.61248	\$6,449.92
PAVE STRIPING-THERMO-6 IN W					
0057	06546	400.000	LF	\$5.09155	\$2,036.62
PAVE STRIPING-THERMO-12 IN W					
0085	02701	5,700.000	LF	\$2.73738	\$15,603.07
TEMP SILT FENCE					

Total for Group 0002:\$1,278,775.23

Group 0003: DRAINAGE

0024	00522	1,465.000	LF	\$70.54020	\$103,341.39
STORM SEWER PIPE-18 IN					
0029	01487	9.000	EACH	\$3,763.69677	\$33,873.27
CURB BOX INLET TYPE F					

Total for Group 0003:\$137,214.66

Group 0004: LIGHTING

0063	04798	3,500.000	LF	\$34.00000	\$119,000.00
CONDUIT-3 1/2 IN					
0069	04714	3.000	EACH	\$40,000.00000	\$120,000.00
POLE 120 FT MTG HT HIGH MAST					
0072	04742	3.000	EACH	\$2,000.00000	\$6,000.00
POLE BASE-HIGH MAST					
0077	04810	2.000	EACH	\$1,900.00000	\$3,800.00
ELECTRICAL JUNCTION BOX					
0082	04939	8.000	EACH	\$400.00000	\$3,200.00
REMOVE POLE					
0083	04941	8.000	EACH	\$500.00000	\$4,000.00
REMOVE POLE BASE					
0084	24589ED	18.000	EACH	\$720.34087	\$12,966.14
LED LUMINAIRE					
0091	04862	7,000.000	LF	\$5.07000	\$35,490.00
CABLE-NO. 4/3C DUCTED					
0092	04761	1.000	EACH	\$24,039.54145	\$24,039.54
LIGHTING CONTROL EQUIPMENT					
0093	04820	3,500.000	LF	\$6.46470	\$22,626.45
TRENCHING AND BACKFILLING					
0094	04750	3.000	EACH	\$1,114.63913	\$3,343.92
TRANSFORMER BASE					

Total for Group 0004:\$354,466.05

Estimate ID230 SB Truck

Estimated Cost:\$7,975,864.14

Contingency: 30.00%

Estimated Total: \$10,368,623.38

ID230 TRUCK PARKING
BOONE COUNTY

Base Date: 11/18/22

Spec Year: 08

Unit System: E

Work Type: GRADE & DRAIN

Highway Type: STATE

Urban/Rural Type: RURAL

Season: SPRING

County: BOONE

Latitude of Midpoint: 0

Longitude of Midpoint: 0

District:

Federal Project Number: Truck Parking

State Project Number: Truck Parking

<u>Line #</u>	<u>Item Number</u>	<u>Quantity</u>	<u>Units</u>	<u>Unit Price</u>	<u>Extension</u>
<u>Description</u>					
<u>Supplemental Description</u>					

Group 0001: PAVING

0005	00001	8,622.000	TON	\$35.70517	\$307,849.98
DGA BASE					
0006	00013	43,108.000	SQYD	\$5.73704	\$247,312.32
LIME STABILIZED ROADBED					
0015	02069	41,150.000	SQYD	\$95.00000	\$3,909,250.00
JPC PAVEMENT-10 IN					

Total for Group 0001:\$4,464,412.30

Group 0002: ROADWAY

0040	02545	1.000	LS	\$10,000.00000	\$10,000.00
CLEARING AND GRUBBING					
0041	02650	1.000	LS	\$20,000.00000	\$20,000.00
MAINTAIN & CONTROL TRAFFIC					
0042	02726	1.000	LS	\$52,500.00000	\$52,500.00
STAKING					
0043	02568	1.000	LS	\$232,000.00000	\$232,000.00
MOBILIZATION					
0044	02569	1.000	LS	\$157,500.00000	\$157,500.00
DEMOBILIZATION					
0045	01830	6,970.000	LF	\$24.00000	\$167,280.00
STANDARD INTEGRAL CURB					
0046	01904	1,350.000	LF	\$7.35835	\$9,933.77
REMOVE CURB					
0047	02058	10,100.000	SQYD	\$42.86895	\$432,976.39
REMOVE PCC PAVEMENT					
0049	02200	57,800.000	CUYD	\$21.40203	\$1,237,037.33
ROADWAY EXCAVATION					
0050	02230	5,300.000	CUYD	\$8.03053	\$42,561.81
EMBANKMENT IN PLACE					
0052	02720	1,182.000	SQYD	\$65.45169	\$77,363.90
SIDEWALK-4 IN CONCRETE					
0053	05985	23,100.000	SQYD	\$0.69707	\$16,102.32
SEEDING AND PROTECTION					
0054	05990	4,700.000	SQYD	\$7.69923	\$36,186.38
SODDING					
0055	20550ND	1,850.000	LF	\$3.73957	\$6,918.20
SAWCUT PAVEMENT					

<u>Line #</u>	<u>Item Number</u>	<u>Quantity</u>	<u>Units</u>	<u>Unit Price</u>	<u>Extension</u>
<u>Description</u>					
<u>Supplemental Description</u>					
0056	06542	15,100.000	LF	\$1.37886	\$20,820.79
PAVE STRIPING-THERMO-6 IN W					
0057	06546	5,500.000	LF	\$2.88178	\$15,849.79
PAVE STRIPING-THERMO-12 IN W					
0085	02701	9,100.000	LF	\$2.53106	\$23,032.65
TEMP SILT FENCE					
Total for Group 0002:\$2,558,063.33					

Group 0003: DRAINAGE

0024	00522	1,610.000	LF	\$70.09297	\$112,849.68
STORM SEWER PIPE-18 IN					
0029	01487	10.000	EACH	\$4,250.00000	\$42,500.00
CURB BOX INLET TYPE F					
0086	00524	265.000	LF	\$147.07515	\$38,974.91
STORM SEWER PIPE-24 IN					
0087	01541	3.000	EACH	\$3,200.00000	\$9,600.00
DROP BOX INLET TYPE 10					
0088	01577	3.000	EACH	\$4,449.27982	\$13,347.84
DROP BOX INLET TYPE 14					
0089	01767	1.000	EACH	\$11,495.70847	\$11,495.71
MANHOLE TYPE C					
0090	02483	218.000	TON	\$72.54424	\$15,814.64
CHANNEL LINING CLASS II					
Total for Group 0003:\$244,582.78					

Group 0004: LIGHTING

0063	04797	6,000.000	LF	\$34.00000	\$204,000.00
CONDUIT-3 IN					
0069	04714	8.000	EACH	\$40,000.00000	\$320,000.00
POLE 120 FT MTG HT HIGH MAST					
0072	04742	8.000	EACH	\$2,000.00000	\$16,000.00
POLE BASE-HIGH MAST					
0077	04810	2.000	EACH	\$1,900.00000	\$3,800.00
ELECTRICAL JUNCTION BOX					
0082	04939	7.000	EACH	\$400.00000	\$2,800.00
REMOVE POLE					
0083	04941	7.000	EACH	\$500.00000	\$3,500.00
REMOVE POLE BASE					
0084	24589ED	48.000	EACH	\$597.79986	\$28,694.39
LED LUMINAIRE					
0091	04862	12,000.000	LF	\$5.07000	\$60,840.00
CABLE-NO. 4/3C DUCTED					

<u>Line #</u>	<u>Item Number</u>	<u>Quantity</u>	<u>Units</u>	<u>Unit Price</u>	<u>Extension</u>
<u>Description</u>					
<u>Supplemental Description</u>					
0092	04761	1.000	EACH	\$24,039.54145	\$24,039.54
LIGHTING CONTROL EQUIPMENT					
0093	04820	6,000.000	LF	\$6.46408	\$38,784.48
TRENCHING AND BACKFILLING					
0094	04750	8.000	EACH	\$793.41557	\$6,347.32
TRANSFORMER BASE					

Total for Group 0004:\$708,805.73