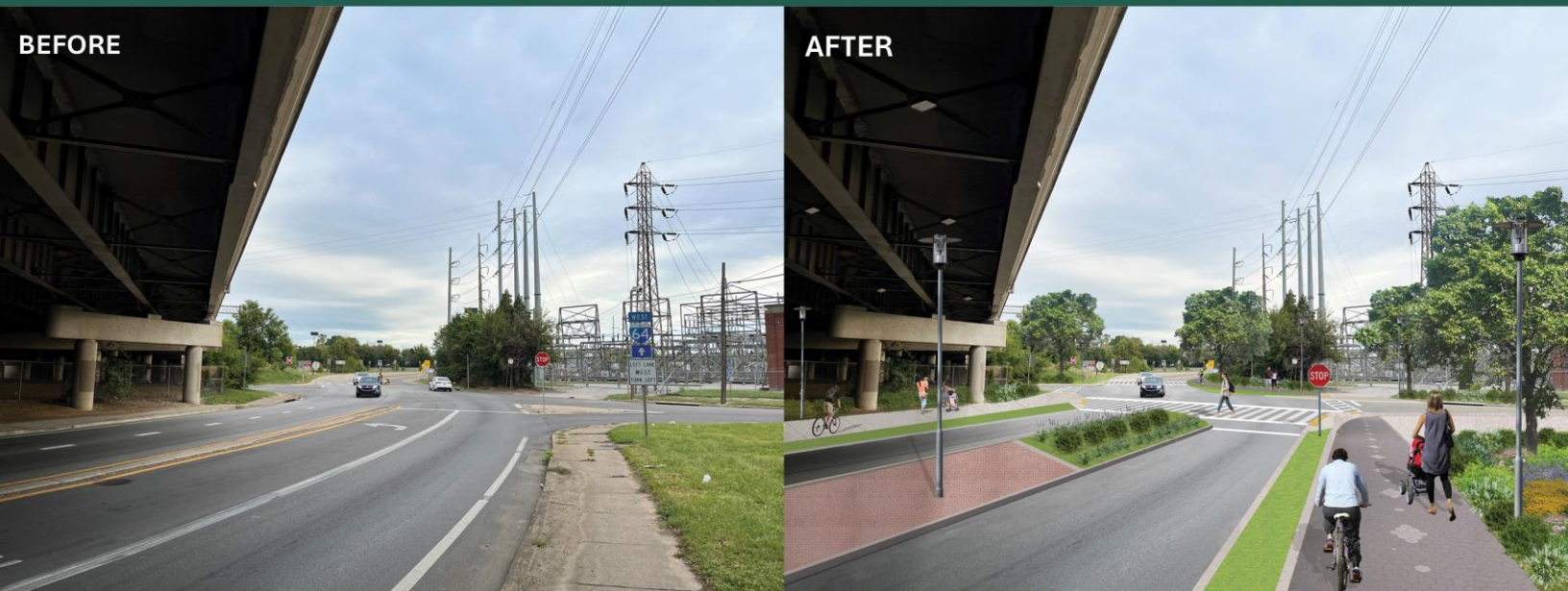


Reconnecting Central Portland to the Riverfront





Andy Beshear
GOVERNOR

TRANSPORTATION CABINET

200 Mero Street
Frankfort, Kentucky 40601

Jim Gray
SECRETARY

September 30, 2024

The Honorable Pete Buttigieg
Secretary
U.S. Department of Transportation
1200 New Jersey Ave, SE
Washington, D.C. 20590

Dear Secretary Buttigieg,

I am writing to express my strong support for the Kentuckiana Regional Planning and Development Agency's (KIPDA's) Reconnecting Communities Pilot (RCP) Program grant application for the *Reconnecting Central Portland to the Riverfront* project. The construction of Interstate 64 (I-64) in 1976 created a barrier within the Portland community located in west Louisville, Kentucky. This project addresses the impact of I-64 by improving critical connectivity and safety for this historically disadvantaged community. The proposed project is well aligned with the RCP Program goals, as it will directly benefit the members of this community by providing safer access to jobs, education, healthcare, food, places of worship, nature, and recreation.

This project will significantly improve multimodal connections through (and safety within) the I-64 interchange at 22nd Street and will incorporate upgrades to the intersections and ramps associated with this interchange. Additionally, 22nd Street between I-64 and Bank Street will be designed as a Complete Street, providing safe access for all users. The reconstruction of two pedestrian bridges over I-64 will also deliver structures that are built using current design standards and allow safe passage to the riverfront area for pedestrians and bicyclists. Together, these improvements will provide a variety of benefits and improve the quality of life for this community of west Louisville.

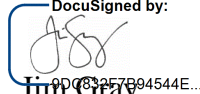
In addition to I-64, this community has been impacted by the construction of a variety of infrastructure elements such as railroad lines, the Louisville and Portland Canal, and the flood wall and levee system. These have impacted connectivity and mobility between the neighborhood and areas adjacent to the Ohio River. This project represents a unique opportunity to renew that connection, improving the quality of life for this disadvantaged community, while enhancing compatibility between neighborhoods and infrastructure.

The Kentucky Transportation Cabinet (KYTC) has coordinated with KIPDA, Louisville Metro, local stakeholders, and the public to gather input and advance the preliminary design and environmental documentation for the *Reconnecting Central Portland to the Riverfront* project with authorization of \$1,000,000 of federal funding provided by the KIPDA-MPO with KYTC providing \$250,000 in state non-federal match. If the project is awarded RCP grant funding, KYTC further commits to providing \$8,918,400 in traditional federal apportionment with the non-federal matching funds provided by KYTC (\$5,845,600) and Louisville Metro Government (\$100,000) to complete the project. In addition to its financial commitment, KYTC is willing to dedicate experienced project management, engineering, and support staff to directly administer the project through its completion.

I appreciate the USDOT's consideration of KIPDA's *Reconnecting Central Portland to the Riverfront* application and strongly recommend this important project for a Reconnecting Communities Grant award.

Sincerely,

DocuSigned by:

A handwritten signature in blue ink, appearing to read "Jim Gray", is enclosed within a blue DocuSign signature box.

Jim Gray
Secretary



OFFICE OF THE MAYOR
CRAIG GREENBERG

September 23, 2024

The Honorable Pete Buttigieg
Secretary of Transportation
U.S. Department of Transportation
1200 New Jersey Ave, SE
Washington, D.C. 20590

**RE: Reconnecting Central Portland to the Riverfront Project
RCP Program Capital Construction Grant Funding Application**

Dear Secretary Buttigieg:

I am writing on behalf of Louisville Metro Government to express our strong support for the Kentuckiana Regional Planning and Development Agency's (KIPDA) Reconnecting Communities Pilot (RCP) Program Grant Application for the Reconnecting Central Portland to the Riverfront Project. This project is aligned with the core goals of the RCP Program, as it addresses critical issues of connectivity and safety for the residents of Louisville's Portland Neighborhood, an economically disadvantaged community. The project also reflects my administration's broader objectives to invest in overlooked and often ignored neighborhoods, improve public safety, and promote equity across the city of Louisville.

The Reconnecting Central Portland to the Riverfront Project is poised to deliver substantial benefits by enhancing multimodal transportation options and improving safety within the Interstate 64 interchange at 22nd Street. Key project components include upgrading intersections and ramps, incorporating "complete streets" elements along 22nd Street to Bank Street, and reconstructing two pedestrian bridges over I-64 to meet current design standards and community needs. Collectively, these improvements will significantly enhance safety and accessibility for all users, facilitating better access to vital destinations such as schools, employment centers, and recreational facilities.

For decades, the Portland Neighborhood has been disproportionately impacted by infrastructure that has isolated it from surrounding areas, particularly the Ohio Riverfront. This project represents an important opportunity to restore the community's physical and social connections, while fostering greater harmony between residential areas and existing infrastructure. By advancing this project, we aim to improve not only the neighborhood's connectivity but also the overall quality of life for Portland residents.

Louisville Metro Government is fully committed to the success of KIPDA's application, and we pledge \$100,000 in local funding toward the required matching dollars for this effort. We deeply appreciate the USDOT's consideration of this critical project and strongly urge its selection for a Reconnecting Communities Grant award.

Sincerely,

Craig Greenberg
Mayor

WWW.LOUISVILLEKY.GOV

LOUISVILLE METRO HALL | 527 WEST JEFFERSON STREET | LOUISVILLE, KENTUCKY 40202

MORGAN McGARVEY
3RD DISTRICT, KENTUCKY

HOUSE COMMITTEE ON
SMALL BUSINESS

HOUSE COMMITTEE ON
VETERANS' AFFAIRS

Congress of the United States
House of Representatives
Washington, DC 20515-1703

1527 LONGWORTH HOUSE OFFICE BUILDING
WASHINGTON, DC 20515-1703
(202) 225-5401

ROMANO L. MAZZOLI FEDERAL BUILDING,
SUITE 216
600 DR. MARTIN LUTHER KING JR. PL.
LOUISVILLE, KY 40202
(502) 528-5129

November 25, 2024

The Honorable Pete Buttigieg, Secretary
U.S. Department of Transportation
1200 New Jersey Ave., SE
Washington, D.C. 20590

Dear Secretary Buttigieg:

I am writing to express my support for the support for the USDOT's Reconnecting Communities Pilot (RCP) Program Grant Application for the *Reconnecting Central Portland to the Riverfront* project. The construction of Interstate 64 (I-64) in 1976 created a barrier within the Portland community located in west Louisville, Kentucky. This project addresses the impact of I-64 by improving critical connectivity and safety for this community. The proposed project is well aligned with the RCP Program goals, as it will directly benefit the members of this community by providing safer access to daily needs such as jobs, education, healthcare, food, nature, and recreation.

Among other things, this project will significantly improve multimodal connections through (and safety within) the I-64 interchange at 22nd Street. Project components include upgrades to the intersections and ramps, implementation of "complete streets" elements along 22nd Street to Bank Street, and the reconstruction of two pedestrian bridges over I-64 to reflect current community needs and design standards. Together, these improvements will provide a variety of benefits to this area of west Louisville, including improved safety and access for all users of the area transportation facilities to important destinations.

Historically, this community has been impacted and divided by the construction of a variety of infrastructure elements such as I-64, railroad lines, the Louisville and Portland Canal, and the flood wall and levee system. These infrastructure elements have impacted connectivity and mobility between the neighborhood and areas adjacent to the Ohio River. This project represents a unique opportunity to renew that connection, improving the quality of life for the community, while enhancing compatibility between neighborhoods and infrastructure.

I appreciate the opportunity to support this grant and ask for full and fair consideration of the application. If you have any questions, please contact Angie Offerman, grants manager, at angie.offerman@mail.house.gov.

Sincerely,


The Honorable Morgan McGarvey
Member of Congress

September 19, 2024

The Honorable Pete Buttigieg
Secretary
U.S. Department of Transportation
1200 New Jersey Ave, SE
Washington, D.C. 20590

**RE: Reconnecting Central Portland to the Riverfront Project
RCP Program Capital Construction Grant Funding Application**

Dear Secretary Buttigieg,

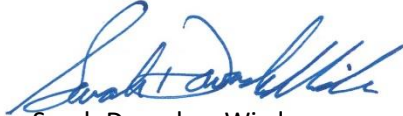
I am writing on behalf of Greater Louisville Inc., the Metro Chamber of Commerce and Regional Economic Development Organization, to express our strong support for the USDOT's Reconnecting Communities Pilot (RCP) Program Grant Application for the *Reconnecting Central Portland to the Riverfront* project. The construction of Interstate 64 (I-64) in 1976 created a barrier within the Portland community located in West Louisville, Kentucky, which is one of the region's most diverse and lowest-income neighborhoods. This project addresses the impact of I-64 by improving critical connectivity and safety for this community. The proposed project is well aligned with the RCP Program goals, as it will directly benefit the members of this community by providing safer access to daily needs such as jobs, education, healthcare, food, nature, and recreation.

Among other things, this project will significantly improve multimodal connections through (and safety within) the I-64 interchange at 22nd Street. Project components include upgrades to the intersections and ramps, implementation of "complete streets" elements along 22nd Street to Bank Street, and the reconstruction of two pedestrian bridges over I-64 to reflect current community needs and design standards. Together, these improvements will provide a variety of benefits to this area of West Louisville, including improved safety and access for all users of area transportation facilities to important destinations. It will also complement Kentucky's recent investment to expand Louisville's Waterfront Park, increasing accessibility to West Louisville and Portland residents to this free community asset.

Historically, this community has been impacted and divided by the construction of a variety of infrastructure elements such as I-64, railroad lines, the Louisville and Portland Canal, and the flood wall and levee system. These infrastructure elements have impacted connectivity and mobility between the neighborhood and areas adjacent to the Ohio River.

I ask that you give full and fair consideration, within all applicable laws and regulations, of the *Reconnecting Central Portland to the Riverfront* project for a Reconnecting Communities Grant.

Sincerely,



Sarah Davasher-Wisdom
President and CEO, Greater Louisville Inc.



September 23, 2024

Larry D. Chaney
Kentucky Transportation Cabinet District 5
8310 Westport Road
Louisville, KY 40242

Dear Mr. Chaney,

On behalf of the Waterfront Development Corporation (WDC), I am writing to express my strong support for the USDOT's Reconnecting Communities Pilot (RCP) Program Grant Application for the *Reconnecting Central Portland to the Riverfront* project. For the past 38 years, WDC has been dedicated to the mission of reclaiming Louisville's downtown Ohio River riverfront for the community. We have transformed 85 acres of property along the river from a blighted, inaccessible, environmentally contaminated wasteland into a nationally recognized, award-winning public park. Waterfront Park is now downtown Louisville's most visited destination with over 2.4 million visitors annually who come from throughout the community and beyond to enjoy Waterfront Park's stunning river views, beautiful green spaces, and hundreds of annual events and programs.

Last year, we started construction on a \$50 million, 22-acre westward expansion of Waterfront Park between 10th and 14th streets along the river (Waterfront Park Phase IV). The neighborhoods surrounding the project site have been historically segregated and suffered decades of disinvestment, thus there is a scarcity of quality green space and recreational resources in the area. The park expansion will provide valuable recreational space and will allow surrounding residents and visitors from throughout the region to enjoy the scenic natural beauty of the river and Falls of the Ohio National Wildlife Conservation Area in unique juxtaposition with the built environment of the McAlpine Locks and Dam and Louisville's downtown skyline.

Significant physical infrastructure (floodwall, interstate, and railroads) impedes access to the park expansion site and our city's most significant natural feature, the Ohio River. The Portland neighborhood, once a thriving area, has been devastated by these infrastructure elements, which essentially eliminated connectivity and mobility between the neighborhood and areas adjacent to the Ohio River. The *Reconnecting Central Portland to the Riverfront* project represents a unique opportunity to renew that connection, improving the quality of life for our community, while enhancing compatibility between neighborhoods and infrastructure.

WDC is committed to providing support to our communities and facilitating changes within our city that help improve the quality of life for all residents. We strongly urge you to consider this project for a Reconnecting Communities Grant award.

Sincerely,

Deborah Bilitski

Deborah Bilitski
President/Executive Director

David K. Karem Building
129 River Road
Louisville, KY 40202

502.574.3768
ourwaterfront.org



DEPARTMENT OF LOUISVILLE PARKS AND RECREATION
LOUISVILLE, KY

CRAIG GREENBERG
MAYOR

MICHELLE KING
EXECUTIVE DIRECTOR

September 23, 2024

The Honorable Pete Buttigieg
Secretary
U.S. Department of Transportation
1200 New Jersey Ave, SE
Washington, D.C. 20590

RE: Reconnecting Central Portland to the Riverfront Project RCP Program Capital Construction Grant Funding Application

Dear Secretary Buttigieg,

I am writing on behalf of Louisville Parks and Recreation to express our strong support for the USDOT's Reconnecting Communities Pilot (RCP) Program Grant Application for the Reconnecting Central Portland to the Riverfront project. Historically, this west Louisville community has been impacted and divided by the construction of a variety of infrastructure elements such as the construction of I-64 in 1976, railroad lines, the Louisville and Portland Canal, and the flood wall and levee system. These infrastructure elements have impacted connectivity and mobility between the neighborhood and areas adjacent to the Ohio River. The proposed project is well aligned with the RCP Program goals, as it will directly benefit the members of this community by providing safer access to daily needs such as jobs, education, healthcare, food, nature, and recreation.

Among other things, this project will significantly improve multimodal connections through (and safety within) the I-64 interchange at 22nd Street. Project components include upgrades to the intersections and ramps, implementation of "complete streets" elements along 22nd Street to Bank Street, and the reconstruction of two pedestrian bridges over I-64 to reflect current community needs and design standards. Together, these improvements will provide a variety of benefits to this area of west Louisville, including improved safety and access for all users of area transportation facilities to area parks and riverfront access points. This area has seen recent investments into bicycle infrastructure as the cornerstone of our Louisville Loop project, making the access improvements proposed even more valuable to residents and visitors seeking to use these amenities and mobility options. This project represents a unique opportunity to renew community connections, improving the quality of life for our residents and visitors, while enhancing compatibility between neighborhoods and infrastructure.

We appreciate the USDOT's consideration of the Reconnecting Central Portland to the Riverfront project and strongly recommend that this project be considered for a Reconnecting Communities Grant award.

Sincerely,

DocuSigned by:
Michelle King
126279046CE247C

Michelle King, Executive Director
Louisville Parks and Recreation



A NATIONALLY ACCREDITED PARKS AND RECREATION AGENCY

WWW.LOUISVILLEKY.GOV

P. O. BOX 37280 LOUISVILLE, KENTUCKY 40233-7280

PHONE: 502.574.7275

FAX: 502.456.3269

TDD: 502.456.8183

WEB: BESTPARKSEVER.COM

EMAIL: PARKS@LOUISVILLEKY.GOV





P.O. Box 5755
Louisville, KY 40255

Brooke@
parksalliancelou.org
502.314.9690

September 21, 2024

The Honorable Pete Buttigieg
Secretary
U.S. Department of Transportation
1200 New Jersey Avenue, SE
Washington, DC 20590

Dear Secretary Buttigieg,

The Parks Alliance of Louisville would like to express our strong support for the USDOT's Reconnecting Communities Pilot (RCP) Program Grant Application for the *Reconnecting Central Portland to the Riverfront* project.

The Portland community has been plagued for decades by infrastructure that has cut them off from a connection to nature through access to public parks and the Ohio River. Infrastructure decisions have historically impacted low-income neighborhoods disproportionately. The time is now to improve multi-modal transportation in an area burdened by infrastructure elements that disconnected them from these vital resources, to improve the quality of life for this community that needs safer access to daily needs such as jobs, education, healthcare, food, nature, and recreation.

Warm Regards,

A handwritten signature in black ink, appearing to read "B. P. Pardue".

Brooke P. Pardue
President & CEO





500 Willinger Lane
Jeffersonville, Indiana 47130
Phone: (812) 288-0940
Fax: (812) 288-4977

September 18, 2024

The Honorable Pete Buttigieg
Secretary
U.S. Department of Transportation
1200 New Jersey Ave, SE
Washington, D.C. 20590

**RE: Reconnecting Central Portland to the Riverfront Project
RCP Program Capital Construction Grant Funding Application**

Dear Secretary Buttigieg,

I am writing on behalf of The Louisville & Indiana Railroad to express our strong support for the USDOT's Reconnecting Communities Pilot (RCP) Program Grant Application for the *Reconnecting Central Portland to the Riverfront* project. The construction of Interstate 64 (I-64) in 1976 created a barrier within the Portland community located in west Louisville, Kentucky. This project addresses the impact of I-64 by improving critical connectivity and safety for this community. The proposed project is well aligned with the RCP Program goals, as it will directly benefit the members of this community by providing safer access to daily needs such as jobs, education, healthcare, food, nature, and recreation.

Among other things, this project will significantly improve multimodal connections through (and safety within) the I-64 interchange at 22nd Street. Project components include upgrades to the intersections and ramps, implementation of "complete streets" elements along 22nd Street to Bank Street, and the reconstruction of two pedestrian bridges over I-64 to reflect current community needs and design standards. Together, these improvements will provide a variety of benefits to this area of west Louisville, including improved safety and access for all users of area transportation facilities to important destinations.

Historically, this community has been impacted and divided by the construction of a variety of infrastructure elements such as I-64, railroad lines, the Louisville and Portland Canal, and the flood wall and levee system. These infrastructure elements have impacted connectivity and mobility between the neighborhood and areas adjacent to the Ohio River. This project represents a unique



500 Willinger Lane
Jeffersonville, Indiana 47130
Phone: (812) 288-0940
Fax: (812) 288-4977

opportunity to renew that connection, improving the quality of life for our community, while enhancing compatibility between neighborhoods and infrastructure.

We appreciate the USDOT's consideration of the *Reconnecting Central Portland to the Riverfront* project and strongly recommend that this project be considered for a Reconnecting Communities Grant award.

Sincerely,

A handwritten signature in black ink, appearing to read "John D. Goldman". The signature is fluid and cursive, with the first and last names being more prominent.

John D. Goldman
President
Louisville & Indiana Railroad

September 27, 2024

The Honorable Pete Buttigieg
Secretary
U.S. Department of Transportation
1200 New Jersey Ave, SE
Washington, D.C. 20590

**RE: Reconnecting Central Portland to the Riverfront Project
RCP Program Capital Construction Grant Funding Application**

Dear Secretary Buttigieg,

I am writing on behalf of the Transit Authority of River City (TARC) to express our strong support for the USDOT's Reconnecting Communities Pilot (RCP) Program Grant Application for the *Reconnecting Central Portland to the Riverfront* project. The construction of Interstate 64 (I-64) in 1976 created a barrier within the Portland community located in west Louisville, Kentucky. This project addresses the impact of I-64 by improving critical connectivity and safety for this community. The proposed project is well aligned with the RCP Program goals, as it will directly benefit the members of this community by providing safer access to daily needs such as jobs, education, healthcare, food, nature, and recreation.

Among other things, this project will significantly improve multimodal connections through (and safety within) the I-64 interchange at 22nd Street. Project components include upgrades to the intersections and ramps, implementation of "complete streets" elements along 22nd Street to Bank Street, and the reconstruction of two pedestrian bridges over I-64 to reflect current community needs and design standards. This area is a critical anchor for TARC transit services, providing a location for several connections across our network. Together, these improvements will provide a variety of benefits to this area of west Louisville, including improved safety and access for all users of area transportation facilities to important destinations.

Historically, this community has been impacted and divided by the construction of a variety of infrastructure elements such as I-64, railroad lines, the Louisville and Portland Canal, and the flood wall and levee system. These infrastructure elements have impacted connectivity and mobility between the neighborhood and areas adjacent to the Ohio River. This project represents a unique opportunity to renew that connection, improving the quality of life for our community, while enhancing compatibility between neighborhoods and infrastructure.

We appreciate the USDOT's consideration of the *Reconnecting Central Portland to the Riverfront* project and strongly recommend that this project be considered for a Reconnecting Communities Grant award.

Sincerely,

A blue ink signature, likely of Ozzy Gibson, consisting of stylized initials and a surname.

Ozzy Gibson
Executive Director

Commonwealth of Kentucky

SENATE DEMOCRATIC FLOOR LEADER

33RD SENATE DISTRICT
JEFFERSON COUNTY
LOUISVILLE, KENTUCKY
LEGISLATIVE MESSAGE LINE (800) 372-7181



CAPITOL ANNEX
FRANKFORT, KENTUCKY 40601
(502) 564-2470
Gerald.Neal@LRC.KY.GOV

GERALD A. NEAL

September 11, 2024

The Honorable Pete Buttigieg
Secretary of Transportation
U.S. Department of Transportation
1200 New Jersey Avenue, SE
Washington, D.C. 20590

Dear Secretary Buttigieg:

I am writing to express my strong support for the Kentuckiana Regional Planning and Development Agency's Reconnecting Communities Pilot (RCP) Program grant application for the Reconnecting Central Portland to the Riverfront project. The construction of Interstate 64 (I-64) in 1976 created a barrier within the Portland community located in west Louisville, Kentucky. This project addresses the impact of I-64 by improving critical connectivity and safety for this historically disadvantaged community. The proposed project is well aligned with the RCP Program goals, as it will directly benefit the members of this community by providing safer access to daily needs such as jobs, education, healthcare, food, nature, and recreation.

This project will significantly improve multimodal connections through (and safety within) the I-64 interchange at 22nd Street and will incorporate upgrades to the intersections and ramps associated with this interchange. Additionally, 22nd Street between I-64 and Bank Street will be designed as a Complete Street, providing safe access for all users. The reconstruction of two pedestrian bridges over I-64 will also deliver structures that are built using current design standards and allow safe passage to the riverfront area for pedestrians and bicyclists. Together, these improvements will provide a variety of benefits for this area of west Louisville including improved safety and access to essential services for all users of area transportation facilities.

Historically, this community has been impacted by the construction of a variety of infrastructure elements such as I-64, railroad lines, the Louisville and Portland Canal, and the flood wall and levee system. These have impacted connectivity and mobility between the neighborhood and areas adjacent to the Ohio River. This project represents a unique opportunity to renew that

The Honorable Pete Buttigieg

Page 2

September 11, 2024

connection, improving the quality of life for this disadvantaged community, while enhancing compatibility between neighborhoods and infrastructure.

I appreciate the U.S. Department of Transportation's consideration of the Reconnecting Central Portland to the Riverfront project and fully support this project for a Reconnecting Communities Grant award.

Sincerely,

A handwritten signature in black ink, appearing to read "Gerald A. Neal". The signature is fluid and cursive, with the first name "Gerald" being the most prominent part.

Gerald A. Neal

Senate Democratic Floor Leader

Senate District 33

GAN/lbc

Commonwealth Of Kentucky

HOUSE OF REPRESENTATIVES

**Representative
Pamela Stevenson
43rd District**



Office Address:
Capitol Annex Room 460
702 Capital Avenue
Frankfort, KY 40601
(502) 564-8100
Pamela.stevenson@kylegislature.gov

September 10, 2024

The Honorable Pete Buttigieg
Secretary
U.S. Department of Transportation
1200 New Jersey Ave, SE
Washington, D.C. 20590

Dear Secretary Buttigieg:

I am writing to express my strong support for the Kentuckiana Regional Planning and Development Agency's Reconnecting Communities Pilot-Program grant application for the Reconnecting Central Portland to the Riverfront project. The construction of Interstate 64 (I-64) in 1976 created a barrier within the Portland community located in west Louisville, Kentucky.

This project will significantly improve multimodal connections through (and safety within) the I-64 interchange at 22nd Street and, will incorporate upgrades to the intersections and ramps associated with this interchange. Additionally, 22nd Street between I-64 and Bank Street will be designed as a Complete Street, providing safe access for all users. The reconstruction of two pedestrian bridges over I-64 will also deliver structures that are built using current design standards and allow safe passage to the riverfront area for pedestrians and bicyclists. Together, these improvements will provide a variety of benefits for this area of west Louisville including improved safety and access to essential services for all users of area transportation facilities.

Historically, this community has been impacted by the construction of a variety of infrastructure elements such as I-64, railroad lines, the Louisville and Portland Canal, and the flood wall and levee system. This project represents a unique opportunity to renew that connection, improving the quality of life for this disadvantaged community, while enhancing compatibility between neighborhoods and infrastructure. I appreciate the U.S. Department of Transportation's consideration of the Reconnecting Central Portland to the Riverfront project and fully support this project for a Reconnecting Communities Grant award.

Sincerely,

A handwritten signature in black ink, appearing to read "Pamela Stevenson", is written over a horizontal line.

Col. Pamela Stevenson
Kentucky House District 43

PS/al