



KENTUCKY STATE POLICE

Ernie Fletcher
Governor

919 Versailles Road
Frankfort, Kentucky 40601
www.kentuckystatepolice.org

John (Jack) Adams
Commissioner

Crime in Kentucky recipient:

Enclosed is your copy of ***Crime in Kentucky – 2006***. This publication would not have been possible to produce without the continued cooperation of all Kentucky law enforcement agencies.

Questions concerning this annual Kentucky State Police publication should be directed to Ms. Melissa Pratt at (502) 226-2169. Questions concerning the statistics provided by your individual law enforcement agency should be directed to Ms. Dorothy Lockett, at (502) 227-8790. These statistics will also be available in the future on the Kentucky State Police website www.kentuckystatepolice.org.

Respectfully,

Captain Eric Walker
Commander, Criminal Identification
& Records Branch

Enclosure

2006



**CRIME
IN
KENTUCKY**

CRIME IN KENTUCKY

COMMONWEALTH OF KENTUCKY
2006 CRIME REPORT

ERNIE FLETCHER
GOVERNOR

JOHN J. ADAMS
COMMISSIONER
KENTUCKY STATE POLICE



COMMONWEALTH OF KENTUCKY
OFFICE OF THE GOVERNOR

ERNIE FLETCHER
GOVERNOR

700 CAPITAL AVENUE
SUITE 100
FRANKFORT, KY 40601
(502) 564-2611
FAX: (502) 564-2517

My Fellow Kentuckians:

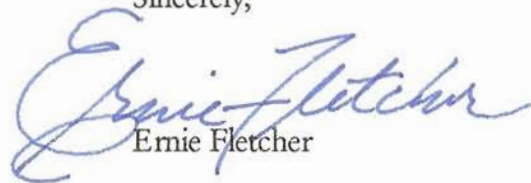
Crime affects the lives of all Kentuckians. This 2006 **Crime in Kentucky** report presents a statewide overview of serious crimes that have occurred within our Commonwealth.

As concerned citizens, we strive to make our state a safer place in which to live. I hope that the information contained in this report will aid in your awareness of the reality of crime and the necessity for developing effective strategies to combat criminal acts.

It is extremely important for all citizens of Kentucky to become actively involved in crime prevention. As Governor, I urge you to continue to support our law enforcement officials in their daily fight against crime.



Sincerely,

A handwritten signature in blue ink that reads "Ernie Fletcher". The signature is fluid and cursive, with the first name "Ernie" being particularly prominent.

Ernie Fletcher



KENTUCKY STATE POLICE

Ernie Fletcher
Governor

919 Versailles Road
Frankfort, Kentucky 40601
www.kentuckystatepolice.org

John (Jack) Adams
Commissioner

The Honorable Ernie Fletcher
Governor of Kentucky
The Capitol
Frankfort, Kentucky 40601

Dear Governor Fletcher:

In accordance with Chapter 17 of the Kentucky Revised Statutes, I am pleased to submit to you and the citizens of Kentucky the 37th annual **Crime in Kentucky** Report.

It must be noted that these crime statistics could not have been accurately compiled without the dedication and cooperation of all law enforcement agencies throughout the Commonwealth.

The Kentucky State Police pledges its continued support to improving the quality, accuracy and timeliness of Kentucky's Uniform Crime Reporting System.



Respectfully submitted,

A handwritten signature in black ink, which appears to read "J. J. Adams".

John (Jack) Adams
Commissioner

DEDICATION

This 2006 Crime in Kentucky Report is dedicated to:

TROOPER JONATHAN LEONARD

(Kentucky State Police)

CONSTABLE ELMER KISER

(Carter County)

and

OFFICER DAVID WHITSON

(Bowling Green Police Department)

***WHO PAID THE SUPREME SACRIFICE OF THEIR LIVES
ON BEHALF OF THE CITIZENS
OF THE COMMONWEALTH OF KENTUCKY***



Trooper Jonathan Leonard

On December 19, 2006, Kentucky State Trooper Jonathan Leonard was responding to a domestic violence call in Pike County. Trooper Leonard was traveling South on US 119 when he attempted to change direction of travel and turned into the path of another vehicle also traveling South on US119. He was fatally injured and was pronounced dead at the scene.

Trooper Leonard, 28, was a three year veteran of the Kentucky State Police. His parents and two brothers survived him.

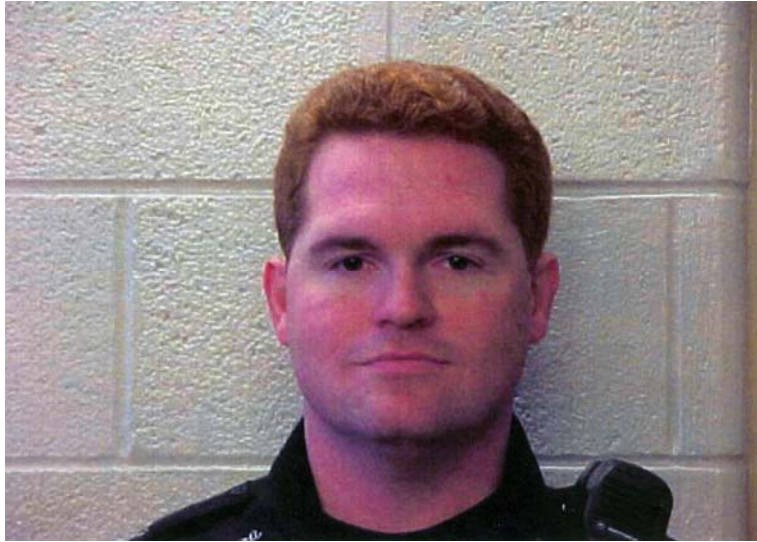


Constable Elmer Kiser

On September 20, 2006, Carter County Constable Elmer Kiser, 63, was in his personal vehicle when the suspect passed him and another vehicle on a curve, forcing the other vehicle off of the roadway. Constable Kiser radioed a member of the Olive Hill Police Department and requested backup as he followed the driver. Minutes later a passerby called 911 to report a man lying on Crawford Avenue, bleeding from his head.

Accident responders transported Constable Kiser to the local hospital trauma center, where he subsequently died from the injuries he sustained.

Constable Kiser had served as the elected constable for Carter County District Four for 12 years. He is survived by his daughter.



Officer David Whitson

Responding to a call, Bowling Green Police Officer David Whitson was fatally injured upon ensuing in a scuffle with an individual brandishing two large knives. Other officers on the scene tried to provide assistance by firing at the suspect. Injured by the gunfire which had bypassed his bullet resistant vest, Officer Whitson subsequently succumbed from his injuries.

Officer David Whitson was an eight-year veteran with the Bowling Green Police Department. He leaves behind a wife and two children.

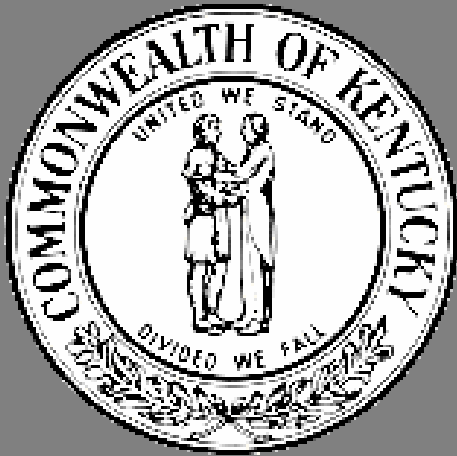
2006 KENTUCKY CRIME FACTS

- 117,671 serious crimes were committed in 2006.
- A serious crime was committed every 4 minutes, 28 seconds.
- Murder was committed every 50 hours, 21 minutes.
- Firearms were used in 62% of all murders.
- 65% of all murder victims were white; 75% were male.
- Rape was committed every 6 hours, 46 minutes.
- Robbery was committed every 2 hours, 25 minutes.
- 48.1% of violent crimes were solved.
- 849 police officers were assaulted.
- 17.4% of property crimes were solved.
- Property crimes outnumbered violent crimes by 9.6 to 1.
- 34,997 persons were arrested for DUI.
- 56,376 arrests were made for drug violations.
- A total of 360,069 arrests were made in 2006.

2006 TABLE OF CONTENTS

MESSAGE FROM THE GOVERNOR.....	iii
LETTER OF TRANSMITTAL, COMMISSIONER, KENTUCKY STATE POLICE.....	v
DEDICATION.....	vii
KENTUCKY CRIME FACTS	xv
TABLE OF CONTENTS.....	xvii
KENTUCKY’S UNIFORM CRIME REPORTING	1
KENTUCKY UNIFORM CRIME REPORTING SYSTEM.....	3
STATE OFFENSE DATA	4
OFFENSE DATA COLLEGES AND UNIVERSITIES.....	4
JURISDICTIONS OVER 10,000 POPULATION	5
CLEARANCE RATES	7
MURDER	8
RAPE	11
ROBBERY	13
AGGRAVATED ASSAULT	15
BURGLARY	17
LARCENY	19
VALUE OF PROPERTY STOLEN/RECOVERED	21
AUTO THEFT	22
ARSON.....	24
KENTUCKY OFFENSES BY COUNTY AND AGENCY	26
PROGRAMS OF INTEREST	43
DOMESTIC VIOLENCE.....	45
HATE/BIAS CRIME	47
DRIVING UNDER THE INFLUENCE... ..	50
DUI CONVICTIONS BY COUNTY.....	52

STATE ARREST DATA.....	56
STATE ARREST DATA.....	58
2006 TOTAL ARRESTS BY AGE-JUVENILE.....	60
2006 TOTAL ARRESTS BY AGE-ADULT	61
2006 TOTAL ARRESTS BY SEX	63
2006 TOTAL ARRESTS BY RACE	64
TOTAL ARRESTS BY COUNTY-ADULT AND JUVENILE.....	65
2006 DRUG ARRESTS:	
BY AREA DEVELOPMENT DISTRICT AND DRUG TYPE	106
BY COUNTY AND DRUG TYPE.....	106
2006 DUI ARRESTS BY AGE, SEX, AND RACE.....	111
 LAW ENFORCEMENT EMPLOYEES:	
MUNICIPAL POLICE DEPARTMENTS	115
SHERIFFS' DEPARTMENTS	120
COUNTY POLICE DEPARTMENTS	122
DRUG TASK FORCES	123
OTHER LAW ENFORCEMENT AGENCIES	123
COLLEGES, SCHOOLS, AND UNIVERSITY DEPARTMENTS.....	124
STATE AGENCIES.....	124
LAW ENFORCEMENT OFFICERS ASSAULTED	125



**KENTUCKY'S
UNIFORM
CRIME
REPORTING
SYSTEM**

KENTUCKY'S UNIFORM CRIME REPORTING SYSTEM

Prior to July 1, 1987, Kentucky's Uniform Crime Reporting System was based on the accumulation of a monthly summary of criminal offenses and arrests by state and local law enforcement agencies. The data submitted was sufficient for broad analysis of general crime trends; however, it did not provide necessary tools for detailed studies required to meet the needs of criminal justice professionals, the law enforcement community and Kentucky Legislators. **After July 1, 1987**, law enforcement agencies were required to submit "Incident" information which differed from "Summary" in that it provided full detail crime specifics. This marked the beginning of Kentucky's Incident Based Reporting System, which required the submission of either the Uniform Offense Report (UOR1) or the uniform data elements as contained in the statewide database. The state has been certified for National Incident Based Reporting System (NIBRS) reporting, which is already taking place in selected law enforcement agencies. As more agencies become technologically able to submit incident based information, our crime data will become more complete – thus greatly enhancing our query capabilities.

1998 through 2006

You should be aware that, in an effort to improve the quality of the Crime in Kentucky report, several adaptations were made in 1998 data reporting and have continued through 2006. These changes are in accordance with UCR guidelines, and will affect your ability to compare the numbers published in the 1998 through 2006 reports with previously published data. Definitions of Part I crimes are listed on each individual offense page; however, the following list is intended to help clarify the data classification process: 1) The offense of Murder does not contain suicides, negligent manslaughters, accidental deaths, assaults to murder, traffic fatalities and attempted murders. 2) Rape reflects the number of offenses for each female victim raped or upon whom an assault to rape or attempt to rape has been made. 3) Robbery is a crime committed in the presence of the victim who is directly confronted by the perpetrator and is threatened with force or put in fear that force will be used. 4) In the absence of force or threat of force (as in pocket-picking or purse-snatching), the offense is classified as larceny. 5) Aggravated Assaults include all assaults by one person upon another with the intent to kill, maim, or inflict severe bodily injury with the use of any dangerous weapon. If a dangerous weapon is used, it is not necessary that injury result from the assault. 6) The offense of Burglary includes all offenses known as burglary (any degree) plus attempts to commit burglary. 7) Motor Vehicle Theft also includes attempted theft of a motor vehicle. 8) The offense of Arson, in keeping with the passage of the Anti-Arson Act of 1982, includes only fires determined through investigation to have been willfully or maliciously set.

In a multiple-offense situation (committed by the same person or group of persons) the *Hierarchy Rule* is applied. This requires counting only the highest offense for statistical comparison purposes. This applies only to crime reporting and does not affect the number of charges for which the defendant may be prosecuted in the courts. An exception to the Hierarchy Rule is Arson, in which each offense (even in the case of multiple charges) is counted for statistical analysis.

STATE OFFENSE DATA

PART I CRIMES	OFFENSES REPORTED			
CLASSIFICATION	2005	2006	% CHANGE	% DIST.
MURDER	191	174	-8.9%	0.2%
RAPE	1,289	1,292	+0.3%	1.1%
ROBBERY	3,817	3,627	-5.0%	3.1%
AGGRAVATED ASSAULT	5,685	5,996	+5.5%	5.1%
BURGLARY	25,673	26,521	+3.3%	22.5%
LARCENY THEFT	69,123	70,263	+1.6%	59.7%
AUTO THEFT	8,635	8,931	+3.4%	7.6%
ARSON	919	867	-5.7%	0.7%
TOTAL	115,332	117,671	+2.0%	100.0%

The total number of Part I crimes reported by law enforcement agencies in Kentucky during 2005 and 2006 is shown in the chart above. These overall statistics reflect only offenses reported to or known by the police. **The total number of Part I crimes cannot be compared to years prior to 1998** due to the fact that Arson was not a category included in the chart of Part I offenses.

There were 2,339 more Part I offenses reported in 2006, a 2.0% increase from 2005. The categories that show an increase are Rape, Aggravated Assault, Burglary, Larceny Theft and Auto Theft. The offenses of Murder, Robbery, and Arson reflect decreases.

When making comparisons between years, the following should be taken into account: (1) Part I offenses are not inclusive of all offenses reported to the police; (2) Increases or decreases in the number of crimes reported can be attributed to a variety of factors, including methods of reporting and tabulating on the part of the law enforcement agencies; (3) Differing levels of citizen awareness and their responsibility to report crimes have a direct impact on the number of reports received by police.

The largest **percentage of increase** was in the Aggravated Assault category, showing 311 greater reported offenses (+5.5%). The offense of Murder shows a decrease of 8.9 percent. In viewing and comparing this data, it should be noted that these crime statistics are being reported by the number of victims rather than the number of offenses against the same victim. In keeping with Uniform Crime Reporting guidelines, the Hierarchy Rule is applied in multiple-offense situations. An exception to this rule is Arson, in which each offense (even in the case of multiple charges) is counted for statistical analysis.

OFFENSE DATA COLLEGES AND UNIVERSITIES

JURISDICTION	MURDER	RAPE	ROBBERY	ASSAULT	BURGLARY	LARCENY	AUTO THEFT	ARSON	TOTAL
EASTERN KY UNIV	0	1	1	1	54	155	2	7	221
KY STATE UNIV	0	0	1	0	4	7	0	0	12
MOREHEAD UNIV	0	0	0	1	10	50	1	8	70
MURRAY ST UNIV	0	3	1	2	27	113	1	6	153
NORTHERN KY UNIV	0	1	0	0	9	135	1	1	147
UNIV OF KENTUCKY	0	2	1	6	65	562	12	6	654
UNIV OF LOUISVILLE	0	0	5	1	11	206	11	0	234
WESTERN KY UNIV	0	1	3	0	57	234	7	1	303
TOTAL	0	8	12	11	237	1,462	35	29	1,794

*The chart above shows Part I offenses which were reported by college and university campuses with security/police departments.

KENTUCKY “CRIME INDEX” = *2,795.04

The crime index, or rate, is used nationally and is derived from the following formula:

Population divided by 100,000 = X

Number of offenses divided by X = crime index.

Kentucky’s crime index for 2006 is based on the current estimated population of 4.21 million.

**A SERIOUS CRIME OCCURS IN
KENTUCKY EVERY
4 MINUTES
28 SECONDS**

Below, Part I offenses are shown for those jurisdictions over 10,000 in population.

JURISDICTION OVER 10,000 POPULATION

JURISDICTION	MURDER	RAPE	ROBBERY	ASSAULT	BURGLARY	LARCENY	AUTO THEFT	ARSON	TOTAL
ASHLAND	1	16	20	32	243	885	58	11	1,266
BARDSTOWN	0	7	6	9	64	187	15	0	288
BOWLING GREEN	5	59	103	202	559	2,033	143	1	3,105
CAMPBELLSVILLE	0	4	15	29	80	312	11	1	452
COVINGTON	9	17	94	43	292	793	94	0	1,342
DANVILLE	0	1	19	28	126	413	39	2	628
ELIZABETHTOWN	0	12	36	37	224	840	47	4	1,200
ERLANGER	1	2	11	14	72	391	40	5	536
FLORENCE	0	11	47	101	168	1,177	82	2	1,588
FRANKFORT	1	11	57	49	349	1,020	125	4	1,616
FT THOMAS	0	7	0	10	37	122	15	2	193
GEORGETOWN	0	5	13	25	207	947	49	4	1,250
GLASGOW	0	5	3	12	90	153	20	1	284
HENDERSON	1	3	18	21	165	324	36	0	568
HOPKINSVILLE	3	17	52	69	388	1,227	91	9	1,856
INDEPENDENCE	0	3	5	10	63	154	27	2	264
JEFFERSONTOWN	0	9	42	13	96	423	77	0	660
LEXINGTON	9	128	505	1,070	2,184	7,550	703	36	12,185
LOUISVILLE	50	175	1,738	1,873	7,567	17,855	3,694	295	33,247
MADISONVILLE	1	6	8	22	115	471	24	0	647
MAYFIELD	0	4	5	15	96	257	14	0	391
MIDDLESBORO*	0	0	0	0	0	0	0	0	0
MURRAY	0	10	13	27	239	496	19	2	806
NEWPORT	1	25	72	31	257	1,009	127	6	1,528
NICHOLASVILLE	1	6	16	17	152	661	58	9	920
OWENSBORO	2	19	32	93	426	1,550	63	3	2,188
PADUCAH	3	19	37	117	219	1,241	123	12	1,771
RADCLIFF	0	15	16	178	149	430	29	4	821
RICHMOND	2	10	16	67	291	897	80	6	1,369
SHELBYVILLE	0	3	26	23	92	229	27	2	402
SHIVELY	2	10	50	25	249	368	107	3	814
SOMERSET	1	5	17	20	92	381	8	0	524
ST MATTHEWS	0	1	21	12	122	725	45	0	926
WINCHESTER	0	7	13	41	222	642	51	1	977
TOTALS	93	632	3,126	4,335	15,695	46,163	6,141	427	76,612

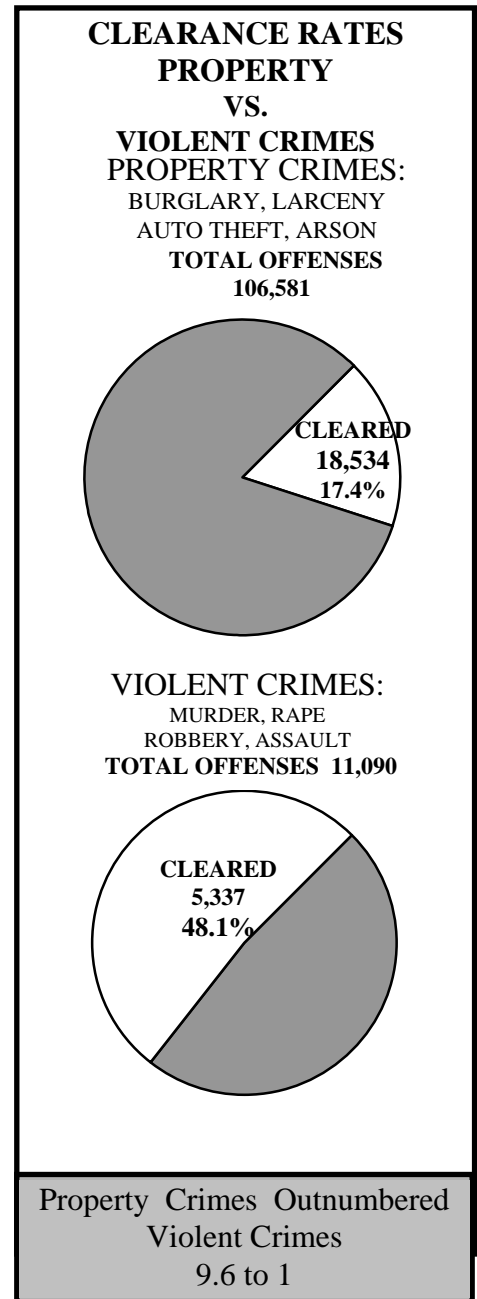
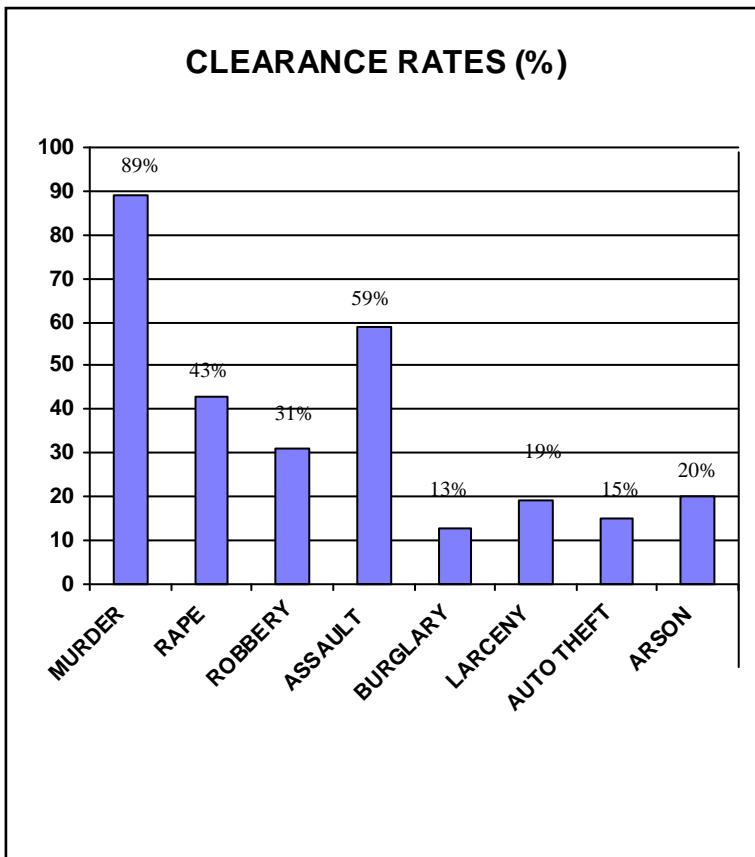
*Data provided but unable to process.

CLEARANCE RATES

Clearance rates are the percentages of cases cleared (through arrest or exceptional means) when compared with the total number of offenses reported to or known by the police. As shown in the chart, clearance rates for property crimes are traditionally low. With the exception of robbery, clearance rates for violent crimes are high. High clearance rates for murder, rape, and aggravated assault are attributable to the fact that the perpetrator is known, recognizable, or in some way usually associated with the victim. Low clearance rates for property crimes can be attributed to the difficulty of the victim identifying the perpetrator.

The chart on the right depicts the relative clearance rates of property versus violent Part I crimes.

The chart below depicts relative clearance rates for each of the eight Part I crimes.



MURDER

DEFINITION

Murder is the unlawful killing of a human being with malice aforethought. Suicides, accidental deaths, negligent manslaughters, assaults to murder, traffic fatalities, and attempted murders are not included.

NUMBER REPORTED	CLEARANCES	RATE
174	155	89.1%

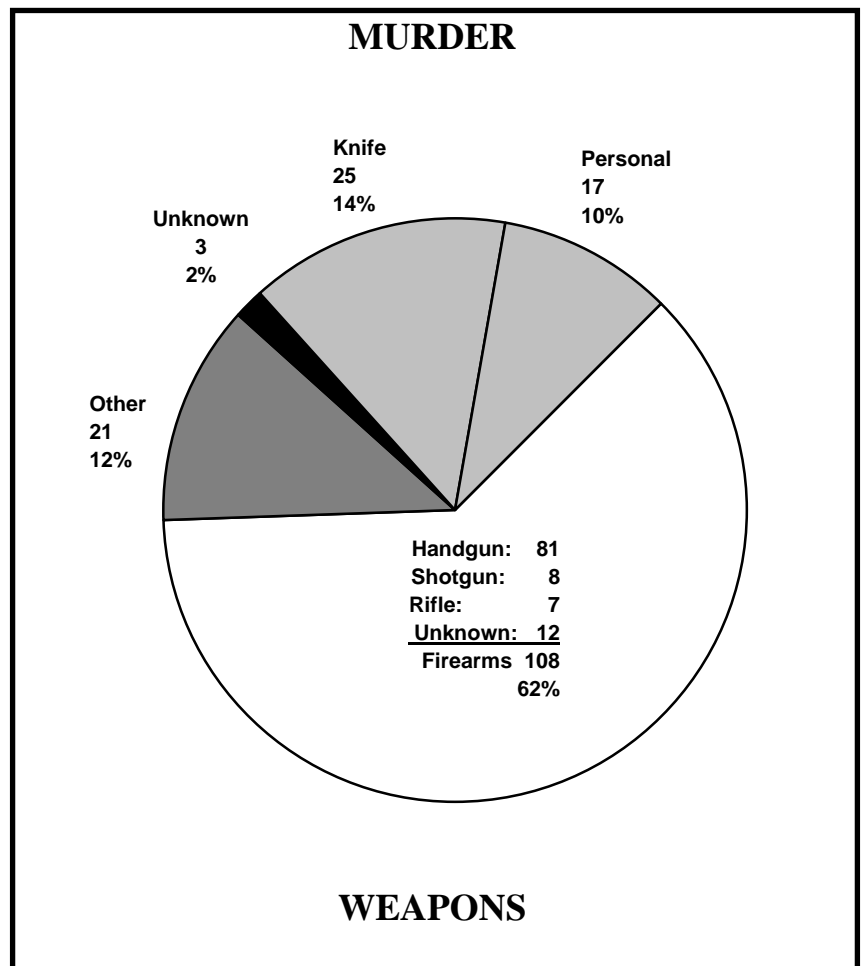
Murder is the most serious of all Part I crimes. The clearance rate is one of the highest of all Part I crimes, at **89.1%**. Although some murders are difficult to solve, the intensity of police investigations, together with solvability factors, account for the high clearance rate for murder.

**MURDER WAS COMMITTED
EVERY
50 HOURS, 21 MINUTES**

MURDER CIRCUMSTANCES/WEAPONS

CIRCUMSTANCES	
ARGUMENT	52
FELONY INVOLVED	33
LOVER'S QUARREL	3
GANG RELATED	0
OTHER	54
UNKNOWN	32
TOTAL	174

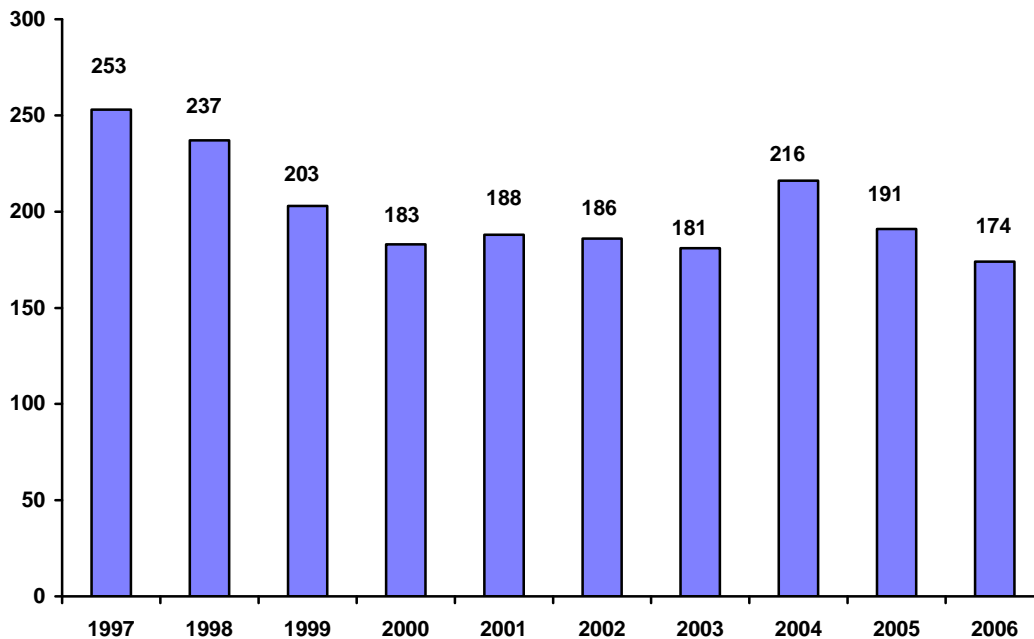
These charts depict murder weapons and circumstances as reported by police officers. The unknown category reflects instances where the weapons/circumstances were not known at the time the report was submitted, or were not specified on the report. Sixty-two percent of the victims were killed with a firearm.



MURDER

AGE	VICTIM							OFFENDER						
	SEX			RACE				SEX			RACE			
	M	F	U	W	B	O	U	M	F	U	W	B	O	U
UNDER 1	6	2	0	7	1	0	0	0	0	0	0	0	0	0
1-4	2	2	0	1	3	0	0	0	0	0	0	0	0	0
5-9	2	2	0	2	2	0	0	0	0	0	0	0	0	0
10-14	1	0	0	1	0	0	0	2	0	0	2	0	0	0
15-19	9	5	0	7	7	0	0	11	1	0	3	9	0	0
20-24	22	3	0	12	13	0	0	25	4	0	16	11	0	2
25-29	17	4	0	10	11	0	0	19	5	0	14	9	1	0
30-34	14	3	0	10	6	1	0	15	3	0	12	6	0	0
35-39	17	2	0	14	3	0	2	11	3	0	11	5	0	0
40-44	12	6	0	11	6	0	1	11	0	0	8	3	0	0
45-49	8	2	0	9	1	0	0	11	1	0	9	3	0	0
50-54	4	3	0	7	0	0	0	11	2	0	12	1	0	0
55-59	1	2	0	2	1	0	0	4	0	0	3	1	0	0
60-64	5	3	0	8	0	0	0	1	0	0	1	0	0	0
65-69	1	1	0	2	0	0	0	1	0	0	1	0	0	0
70-74	4	1	0	4	1	0	0	0	0	0	0	0	0	0
75+	4	3	0	7	0	0	0	0	0	0	0	0	0	0
UNK	1	0	0	0	1	0	1	7	0	38	3	3	0	39
TOTAL	130	44	0	114	56	1	3	129	19	38	95	51	1	39
%	75%	25%	0%	65%	32%	1%	2%	69%	10%	21%	51%	27%	1%	21%

M=MALE, F=FEMALE, U=UNKNOWN, W=WHITE, B=BLACK, O=OTHER, U=UNKNOWN



10 YEAR MURDER VICTIM TREND

RAPE

DEFINITION

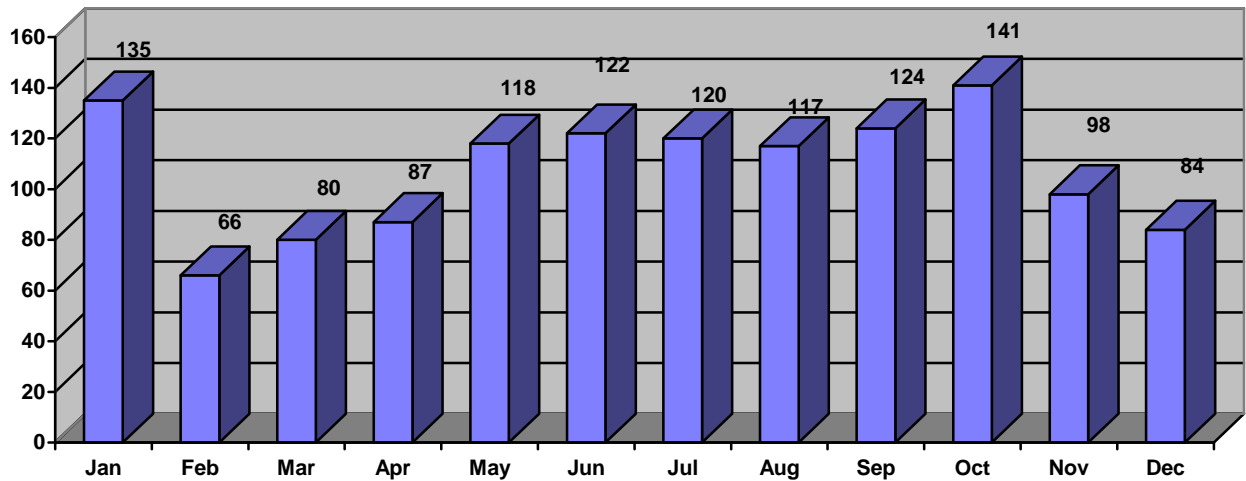
Rape is defined as the carnal knowledge of a person, forcibly or otherwise, against the person's will. Only forcible rapes are included, together with assaults for the purpose of rape and attempted forcible rapes. Excluded are rapes where the victim is under the age of consent and no force is used.

NUMBER REPORTED	CLEARANCES	RATE
1,292	558	43.2%

The **43.2%** clearance rate for rape is high when compared with property crimes. One explanation for the number of rapes cleared is the fact that the victim and the offender are frequently acquainted or related.

**RAPE
WAS COMMITTED EVERY
6 HOURS, 46 MINUTES**

NUMBER OF RAPES BY MONTH



ROBBERY

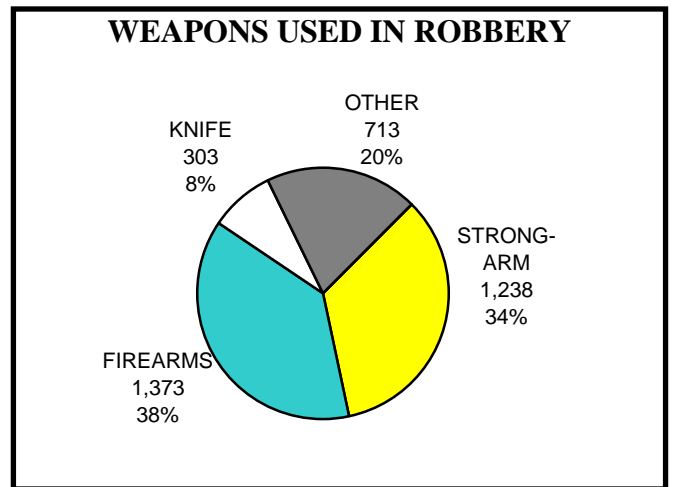
DEFINITION

Robbery is the felonious taking of the property of another by force, the threat of force, violence, and/or by putting the victim in fear. All attempted robberies are included. Robberies are reported in two general categories: armed (any weapon or threatening object is used) and strong-arm (to include muggings and similar offenses where no weapon is used but strong-arm tactics are employed).

NUMBER REPORTED	CLEARANCES	RATE
3,627	1,111	30.6%

Robbery is considered to be a serious crime because the element of fear and personal confrontation with a weapon or strong-arm tactic is always present. The **30.6%** clearance rate for robbery is higher than for other crimes motivated by the theft of property, but low in comparison to murder, and assault in which the element of personal confrontation is also present. This is attributed to the fact that the perpetrator usually conceals his personal identity from the victim.

Reported robberies decreased by **5.0%** in Kentucky in 2006.



ROBBERY WAS COMMITTED EVERY 2 HOURS, 25 MINUTES

ROBBERY - PLACE OF OCCURRENCE

CLASSIFICATION	NUMBER OF OFFENSES	PERCENT OF DISTRIBUTION	TOTAL VALUE	AVERAGE VALUE
Highway	1,112	30.6%	\$1,152,573.53	\$1,036.49
Commercial House	242	6.7%	\$244,016.00	\$1,008.33
Gas-Service Station	76	2.0%	\$13,831.00	\$181.99
Chain Store	216	6.0%	\$61,979.86	\$286.94
Residence	623	17.2%	\$448,743.83	\$720.29
Bank	122	3.4%	\$291,625.53	\$2,390.37
Miscellaneous	1,236	34.1%	\$918,897.79	\$743.44
TOTAL	3,627	100.0%	\$3,131,667.54	\$863.43

Robbery classifications denote the type of robbery reported. Highway robberies occur on any roadway, whether it be a highway, county road, or city street. Commercial house robberies are those perpetrated in hotels, motels, restaurants, and like businesses. Chain store robberies include convenience type stores, groceries, and like businesses. Residences include homes and apartments and other dwellings.

AGGRAVATED ASSAULT

DEFINITION

Assault is the unlawful attack by one person upon another for purpose of inflicting severe or aggravated bodily injury. It is not necessary that injury result from an aggravated assault when a gun, knife, or other weapon is used which could, and probably would, result in serious personal injury. Therefore, all assault attempts where serious injury would have been likely to occur are included. Excluded from the Part I crime of aggravated assault are all assaults which do not include the use of a dangerous weapon and there was no serious or aggravated injury (assault 4th). These simple assaults are counted as Part II crimes.

NUMBER REPORTED	CLEARANCES	RATE
5,996	3,513	58.6%

The **58.6%** clearance rate is high because the victim is frequently related to or acquainted with the assailant.

**AGGRAVATED ASSAULT WAS COMMITTED
EVERY 1 HOUR, 28 MINUTES**

The category of aggravated assault includes the following offenses: attempts to murder, poisoning, assault with a dangerous or deadly weapon; maiming; assault with explosives; and all attempts to commit said offenses.

Weapons used in aggravated assault are shown in the chart below.

WEAPONS USED IN AGGRAVATED ASSAULT		
TYPE WEAPON	NUMBER	% OF TOTAL
PERSONAL WEAPONS	1,632	27.2%
OTHER WEAPONS	2,406	40.1%
FIREARMS	1,081	18.1%
KNIVES	877	14.6%
TOTAL	5,996	100.0%

BURGLARY

DEFINITION

Burglary is the unlawful entering or remaining in a building with the intent to commit a crime. This includes entries where force of any kind is used to gain entrance, entries where no force was used (an unlocked door or by concealment), and attempts to enter forcibly (even though entry was not gained).

NUMBER REPORTED	CLEARANCES	RATE
26,521	3,533	13.3%

Burglary increased **3.2%** from 25,673 in 2005, to 26,521 in 2006.

BURGLARY WAS COMMITTED EVERY 19 MINUTES, 49 SECONDS.

THE COST OF BURGLARY

Burglary is a crime of opportunity and is most likely to occur when a home or business is not occupied. The burglaries have been separated into residential and non-residential categories. The totals listed below include both day and night occurrences, and the value of property losses reported.

CLASSIFICATION	NUMBER OF OFFENSES	PERCENT OF DISTRIBUTION	TOTAL VALUE	AVERAGE VALUE
RESIDENTIAL				
NIGHT	4,816	18.2%	\$6,772,786.53	\$1,406.31
DAY	6,820	25.7%	\$11,724,193.10	\$1,719.09
UNKNOWN	2,921	11.0%	\$5,030,417.63	\$1,722.16
SUBTOTAL	14,557	54.9%	\$23,527,397.26	\$1,616.23
NON-RESIDENTIAL				
NIGHT	5,714	21.5%	\$2,398,355.00	\$419.73
DAY	4,010	15.1%	\$6,932,792.67	\$1,728.88
UNKNOWN	2,240	8.5%	\$3,937,097.75	\$1,757.63
SUBTOTAL	11,964	45.1%	\$13,268,245.42	\$1,109.01
TOTAL	26,521	100.0%	\$36,795,642.68	\$1,387.42

