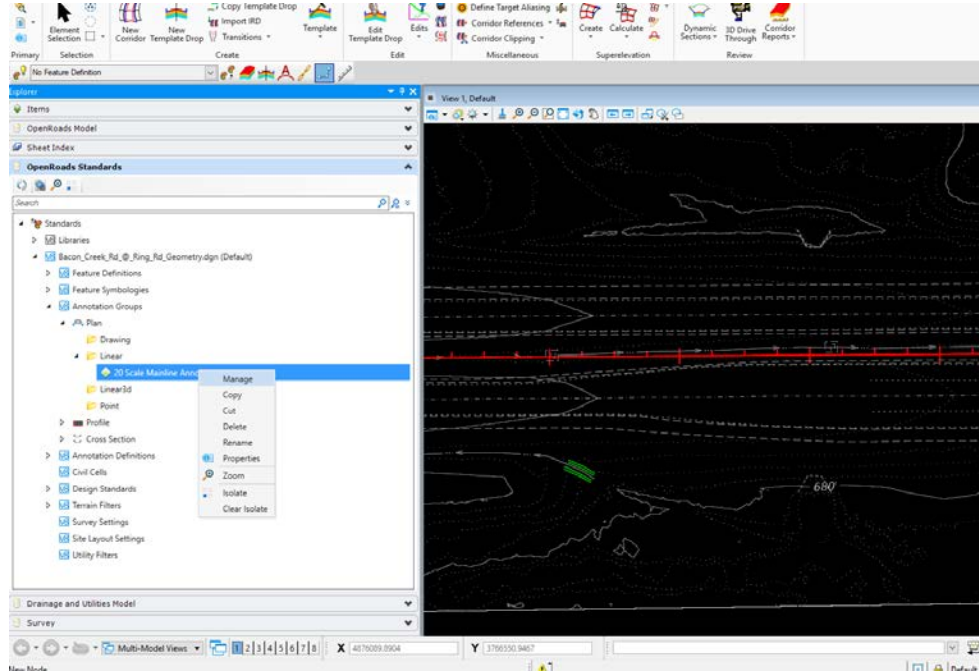
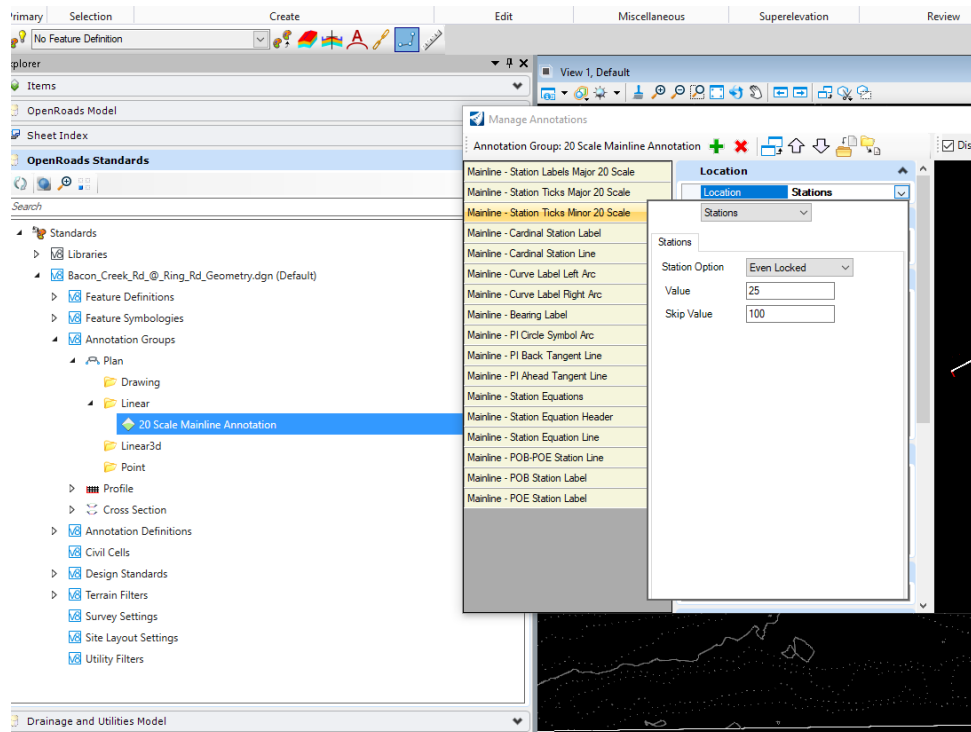


CUSTOM STATIONING IN ORD

Sometimes you want to use a different substation in ORD for your alignment instead of what is set up in the standards. To modify stationing, do the following:



1. Open Explorer – OpenRoads Standards – Annotation Groups – Plan – Linear – Right click on the Feature Definition of the Annotation and left click Manage



2. Select/highlight what you want to modify (in this case it's the Minor Station Ticks), then click the drop down beside "Location: Stations" and you can change the sub station value. In this case, the default was 20, but I wanted 25' sub ticks.
3. This will automatically update the ticks and annotation along the alignment.
4. You will have to verify that all other alignments coincide, such as profile. Use the same process, only select profile under Annotation Groups in step 1.