



**TOPCON**



# TopSURV/ Cell Phone

**Configuration for  
Network Operations**

**Quick Reference Guide**

The information contained herein is confidential and is the property of Topcon Corporation.

This document may not be duplicated in any form, or for any matter without the expressed written consent of Topcon Corporation or its representatives.

Information subject to change without notice.







# **TopSURV/Cell Phone Quick Reference Guide**

## **Configuration for Network Operations**

Part Number 7010-0754

**©Copyright Topcon Positioning Systems, Inc.  
February, 2006**

All contents in this manual are copyrighted by Topcon.  
All rights reserved.

## **Terms and Conditions**

Thank you for buying this Topcon product. This manual has been prepared to assist you with the care and operation of the product and its use is subject to these Terms and Conditions and those more fully set forth in the Operator's/User's Manual.

This product is designed for use by professionals. Always use safety precautions at the job site.

## **Copyrights and Trademarks**

The information in this manual is a copyright of Topcon and is for use only with the product. TopSURV, HiPer, CR3, CR-4, and Topcon are trademarks or registered trademark of TPS. Windows and the Windows CE icon are registered trademarks of Microsoft Corporation. The Bluetooth wordmark and logos are owned by Bluetooth SIG, Inc. and any use of such marks by TPS are under license. Other product and company names mentioned herein may be trademarks of their respective owners.

## **Disclaimer of Warranty and License Agreement**

Please see the Operator's/User's Manual for detailed information on warranties and the license agreement which may apply to the Product.

EXCEPT FOR SUCH WARRANTIES AND LICENSES PROVIDED WITH THE PRODUCT, THIS MANUAL AND THE PRODUCT ARE PROVIDED "AS-IS". TOPCON AND ITS DISTRIBUTORS SHALL NOT BE LIABLE FOR TECHNICAL OR EDITORIAL ERRORS OR OMISSIONS CONTAINED HEREIN; NOR FOR INCIDENTAL OR CONSEQUENTIAL DAMAGES RESULTING FROM THE FURNISHING, PERFORMANCE OR USE OF THIS MATERIAL OR THE PRODUCT.

Use of any computer programs or software supplied by Topcon or downloaded from the Topcon website in connection with the Product implies acceptance of the Terms and Conditions here and in the Operator's/User's Manual.

## Bonding to Bluetooth Cell Phone

**Note:** *Bluetooth configuration is a one time setup.*



**Step 1**



**Step 2**

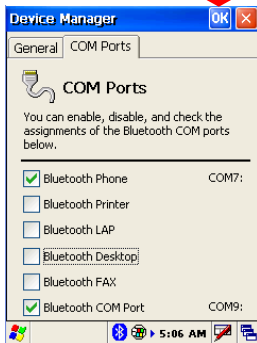


**Step 3**

**Note:** *Make sure your controller is “Discoverable” and “Connectable”.*

## Bonding to Bluetooth Cell Phone

**Step 4**

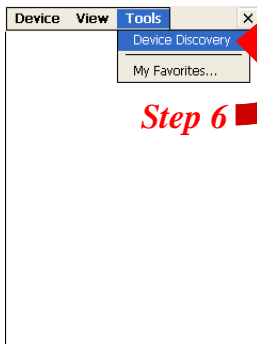


**Note: The Bluetooth Phone and the Bluetooth COM Port must be checked.**

2



**Step 5**

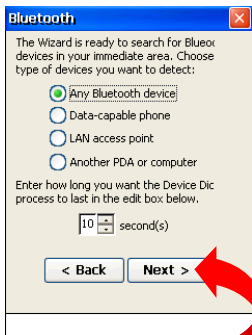


**Step 6**

## Bonding to Bluetooth Cell Phone

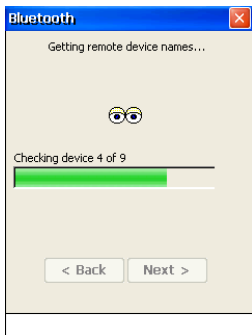


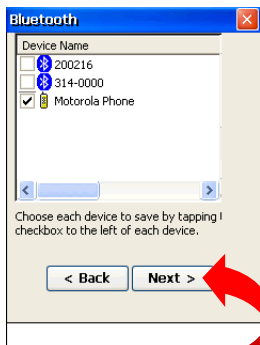
**Step 7**



**Step 8**

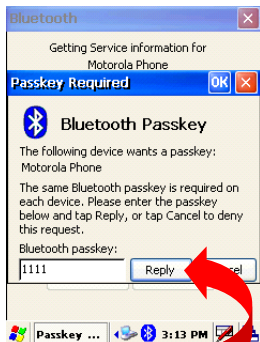
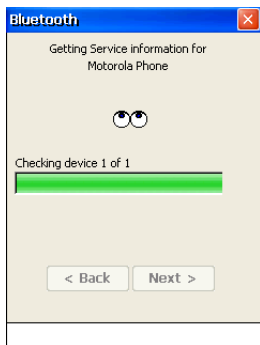
***Note: Before selecting 'Next' in the last step, make sure that your cell phone is in discoverable mode for Bluetooth.***





**Step 9**

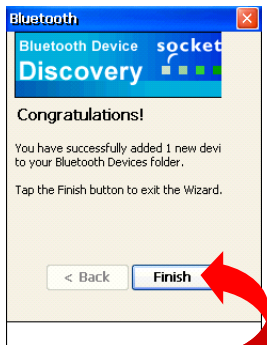
***Note: At this time, your cell phone should prompt you to bond with your data collector. Select 'Yes' and enter the Bluetooth Passkey of 1111 on your phone and select 'Ok'.***



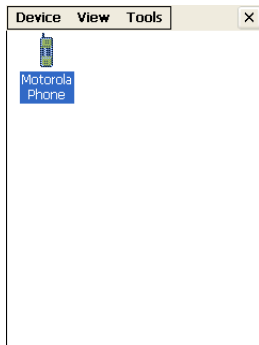
**Step 10**



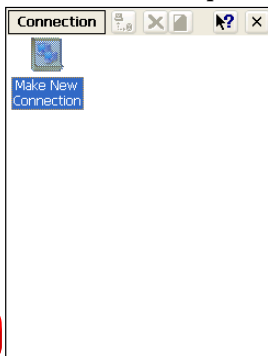
## Bonding to Bluetooth Cell Phone



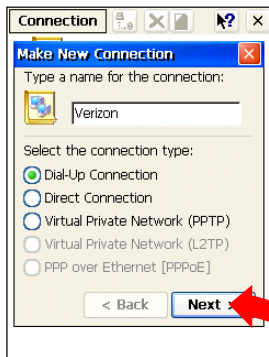
*Step 11*



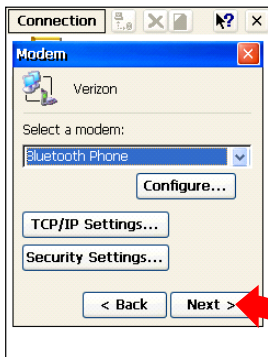
*Note: Dialup configuration is a one time setup.*



**Step 1**

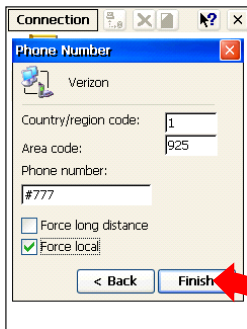


**Step 2**



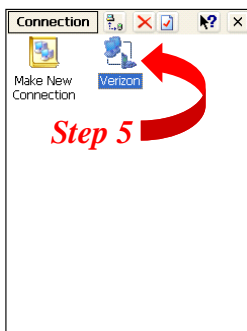
**Step 3**

## Creating a Dialup Connection

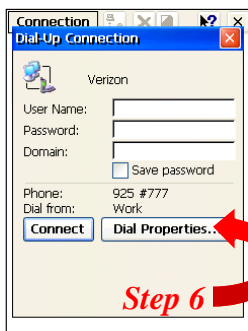


**Step 4**

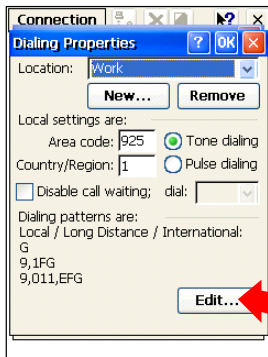
*Note: For the Phone Number Field, enter the data phone number for connecting to the Internet, specified by your Service Provider.*



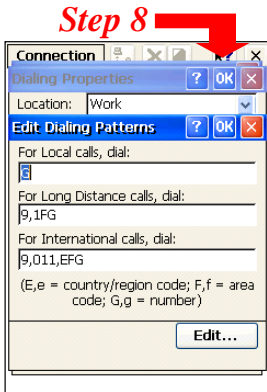
**Step 5**



**Step 6**



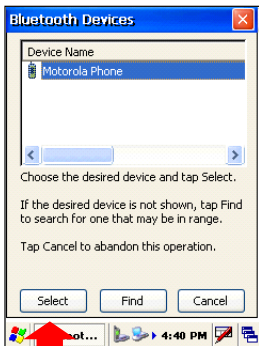
**Step 7**



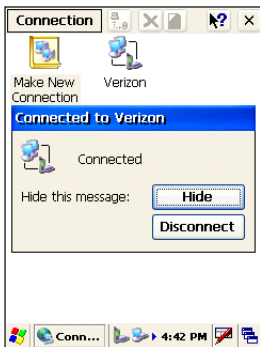
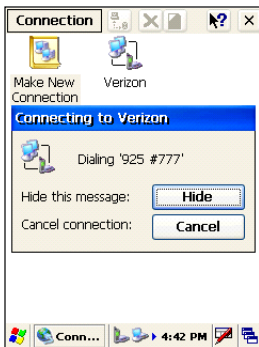
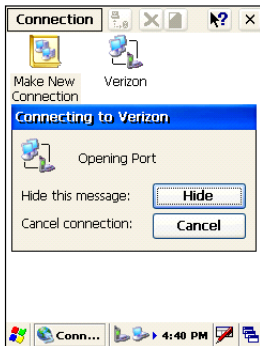
**Note:** Enter the username and password for dialup networking, specified by your Service Provider.

**Example:** Verizon's username is `phonenumber@vzw3g.com` and the password is `vzw`.

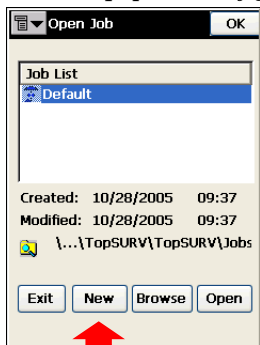
## Creating a Dialup Connection



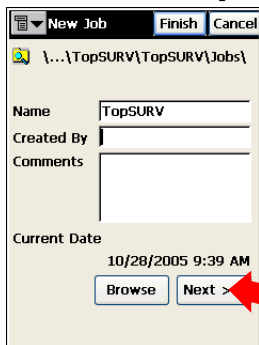
*Step 10*



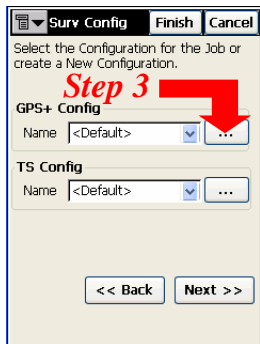
*Note: Equipment configuration is a one time setup.*



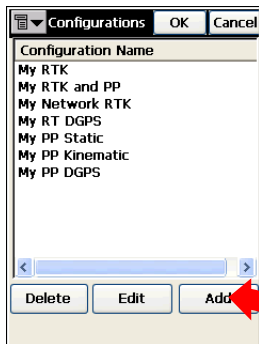
*Step 1*



*Step 2*



*Step 3*



*Step 4*

## Creating a New Job

**Survey** Finish Cancel

Name

Type

Corrections

Next >

*Step 5*

**Rover Recvr** Finish Cancel

Output Port

Laser Config

RTK Protocol  deg

Help

<< Back Next >>

*Step 6*

**Rover Recvr** Finish Cancel

Elevation Mask  deg

Protocol

<< Back Next >

*Step 7*

**Config: Modem** Finish Cancel

Modem Connect

<< Back Next >

*Step 8*



**Step 9**

*Note: Enter in the IP Address and Port number of the Network you are connecting to in the following format: IP Address/Port*

*Note: The Port number you enter will coincide with the Ntrip port of the Network. Make sure that you have selected the correct port.*




**Step 10**

**Step 11**



## Creating a New Job



The screenshot shows a dialog box titled "Config: NTRIP | Finish | Cancel". The main area is labeled "NTRIP Server" and contains three fields: "Server" with the value "111.111.111.111:800", "User ID" with the value "USER1", and "Password" with the value "USER1". At the bottom, there are two buttons: "<< Back" and "Next >". A red arrow points from the "Next >" button towards the right.

**Step 12**

*Note: Enter in the Ntrip User ID and Password that was assigned to you by the Network Administrator.*



The screenshot shows a dialog box titled "Config: Modem | Finish | Cancel". The main area is labeled "Receiver Info" and contains a "Virtual Radio Port" section with a dropdown menu. At the bottom, there are two buttons: "<< Back" and "Next >". A red arrow points from the "Next >" button towards the right.

**Step 13**

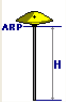
*Note: Select a port that is not being used by the receiver. Keep in mind, port B is the Bluetooth port and port C is the modem port.*

**Rover Ant** Finish Cancel

Ant Type: HiPer XT

Ant Ht: 2.000 m

Meas Type: Vertical



<< Back Next >

*Step 14*

**mmGPS** Finish Cancel

Use mmGPS+

Receiver Port: D

Sensor Gain: Auto

Init Time Improvement

Weighted Height

Height Difference Limit: 0.300 m

<< Back Next >

*Step 15*

**Survey Params** Finish Cancel

Solution Type: Fix Only

Auto Accept

Num Meas to Avg: 3

Precision (m)

Hz: 0.0150 Vert: 0.0300

Auto Topo

Method: By Hz Dist

Interval: 15.00 m

<< Back Next >

*Step 16*

**Stk Params** Finish Cancel

Hz Dist Tolerance: 0.0500 m

Reference Direction: Moving Direction

Store Staked Point As

Point: Design Pt Suf \_stk

Note: Design Point

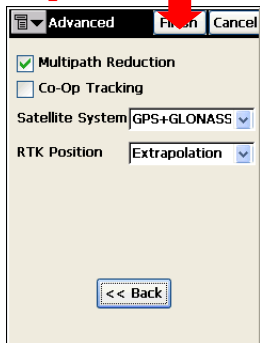
Solution Type: Fix Only

<< Back Next >

*Step 17*

## Creating a New Job

### Step 18



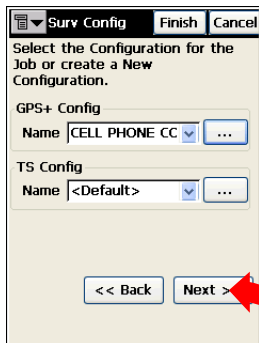
Advanced Finish Cancel

Multipath Reduction  
 Co-Op Tracking

Satellite System GPS+GLONASS

RTK Position Extrapolation

<< Back



Surv Config Finish Cancel

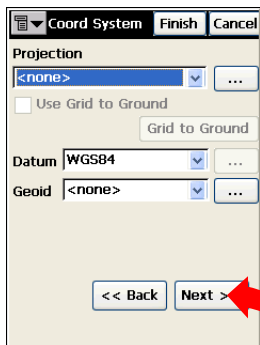
Select the Configuration for the Job or create a New Configuration.

GPS+ Config  
Name CELL PHONE CC

TS Config  
Name <Default>

<< Back Next >

### Step 19



Coord System Finish Cancel

Projection  
<none>

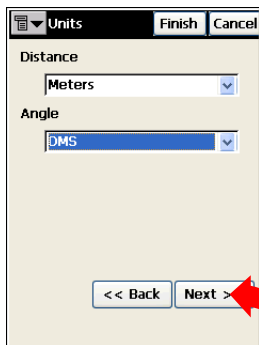
Use Grid to Ground  
Grid to Ground

Datum WGS84

Geoid <none>

<< Back Next >

### Step 20



Units Finish Cancel

Distance  
Meters

Angle  
DMS

<< Back Next >

### Step 21

Display Finish Cancel

Coord Type  
WGS84 (Lat/Lon/Ell ht)

Coord Order  
Northing,Easting,Ell Ht

Azimuth Origin North

Disp Dir As Azimuth

Disp CL Pos As Station

Full Station 100.000 m

<< Back Next >

*Step 22*

*Step 23*

Alarms Finish Cancel

Audible Alarm

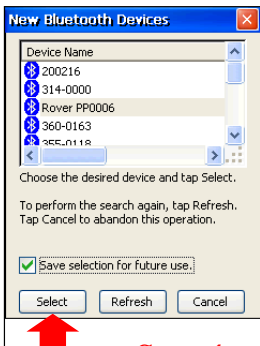
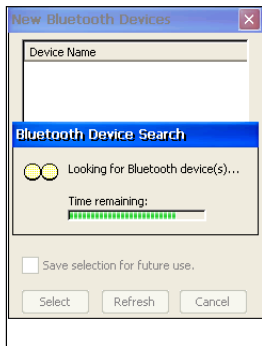
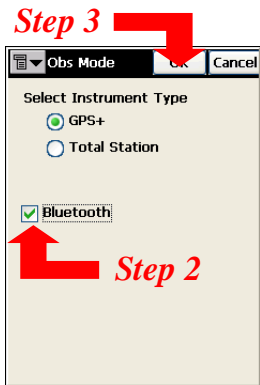
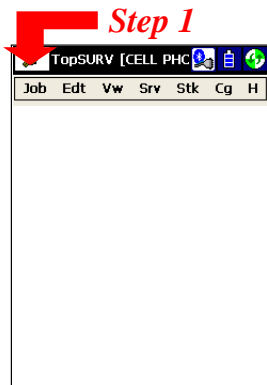
Instrument	Controller	GPS+	TS
Power Alarm	<input checked="" type="checkbox"/>	<input checked="" type="checkbox"/>	<input checked="" type="checkbox"/>
Memory Alarm	<input checked="" type="checkbox"/>	<input checked="" type="checkbox"/>	<input type="checkbox"/>
Radio Link	<input type="checkbox"/>	<input checked="" type="checkbox"/>	<input type="checkbox"/>
Loss of Init	<input type="checkbox"/>	<input checked="" type="checkbox"/>	<input type="checkbox"/>

<< Back

TopSURV [CELL PHC]

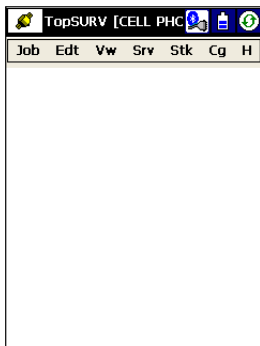
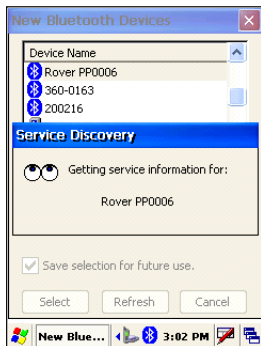
Job Edt Vw Srv Stk Cg H

## Configure Modem

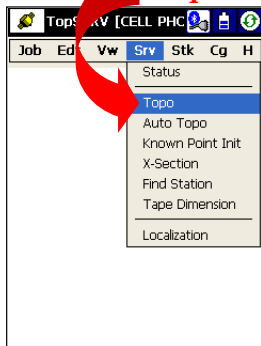


## Configure Modem

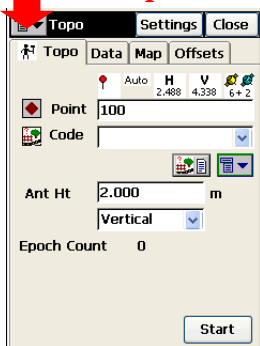
18



*Step 5*

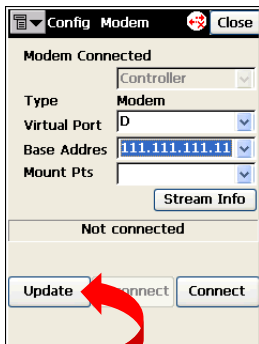
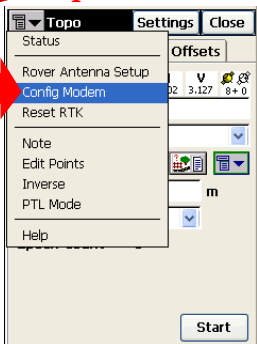


*Step 6*

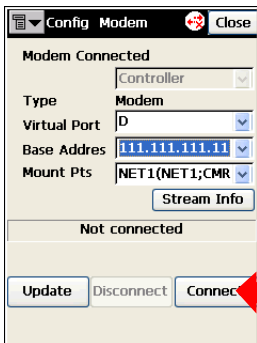


## Configure Modem

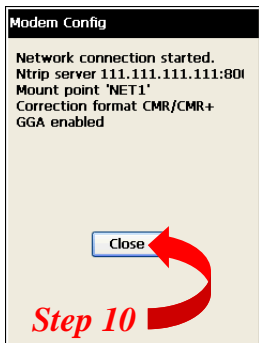
**Step 7**



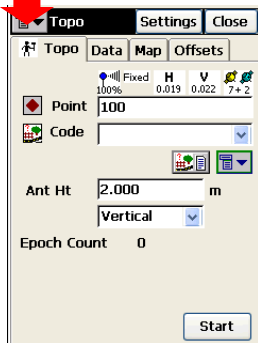
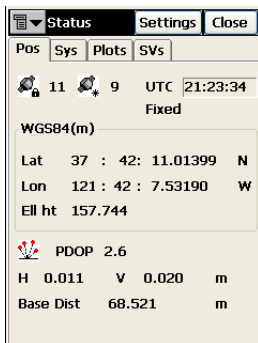
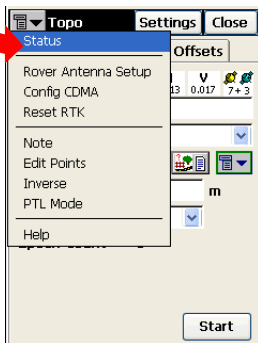
**Step 8**



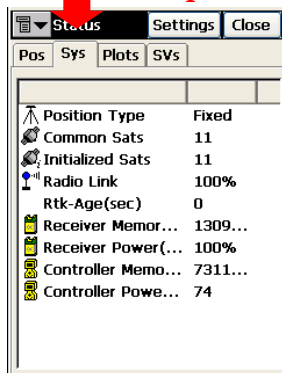
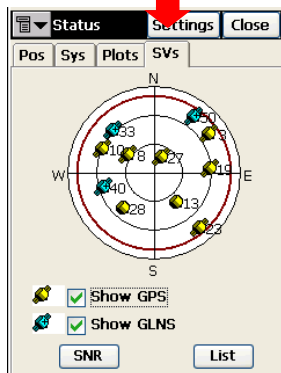
**Step 9**



**Step 10**

**Step 11****Step 12**



**Step 13****Step 14**







**TOPCON**

# **TOPCON**

**Topcon Positioning Systems, Inc.**

7400 National Drive, Livermore, CA 94551

Phone: 800-443-4567

[www.topcon.com](http://www.topcon.com)

©2006 Topcon Positioning Systems, Inc.

All rights reserved. No unauthorized duplication.

TopSURV/Cell Phone Quick Reference Guide

P/N: 7010-0754 Rev. A 02/06



ISO 9001:2000  
FM 88448