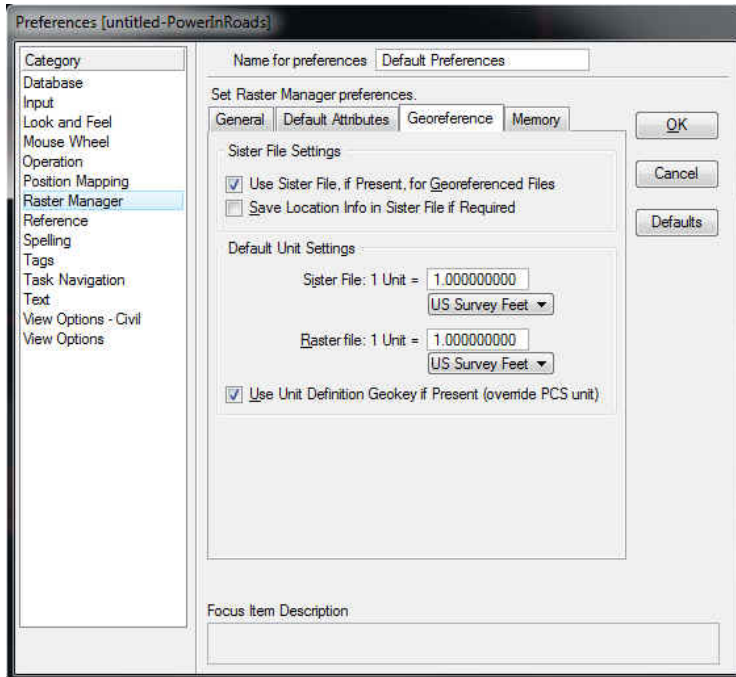


This procedure will not work in the TSC2 with Survey Controller software. It will work in a TSC3 with Trimble Access.

Open a DGN file and attach the photography for the area you are working in. Crop out the specific area needed. However, don't crop out an area to big. 2000 ft. X 2000 ft. square this will be saved a TIFF file.

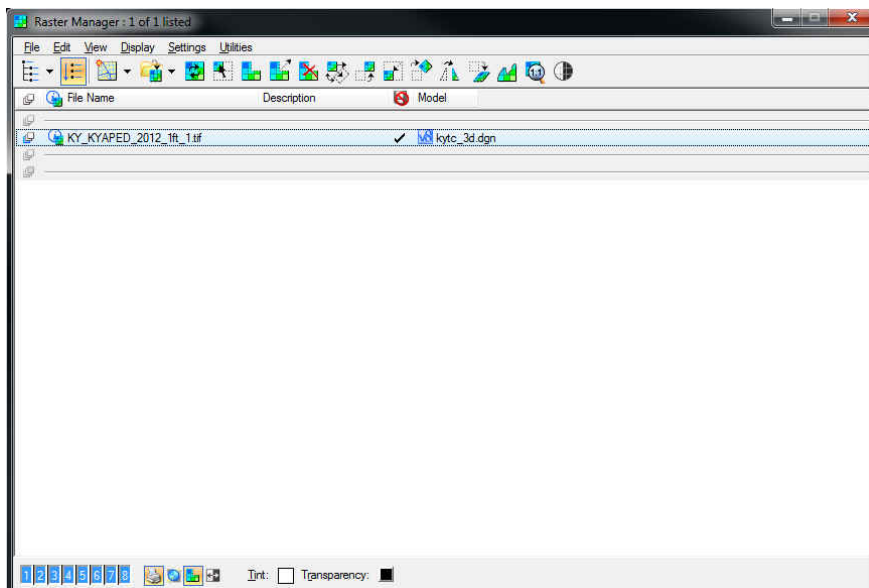
Detach the main photography and attach the saved file through "Raster Manager" under File in the Microstation tool bar.

Go to the "Workspace" tool bar and select Preferences then select "Raster Manager" under categories.

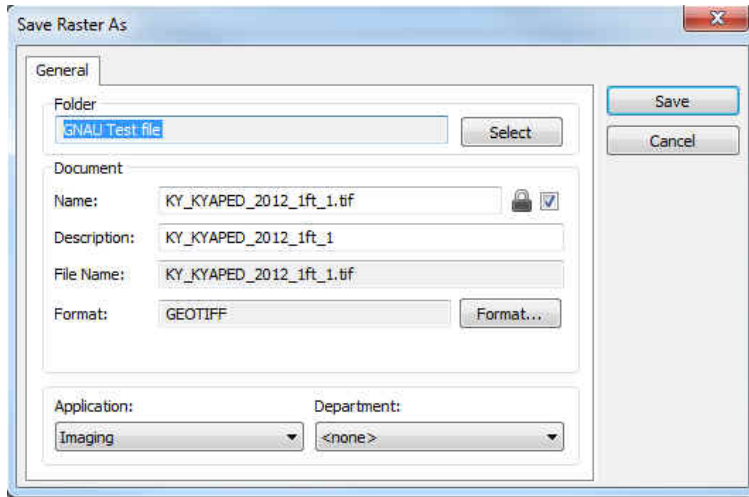


Select the "Georeference" tab. Ensure that the Default Unit Settings are in US Survey Feet, select OK and Save Settings from the "File" tool function in Microstation.

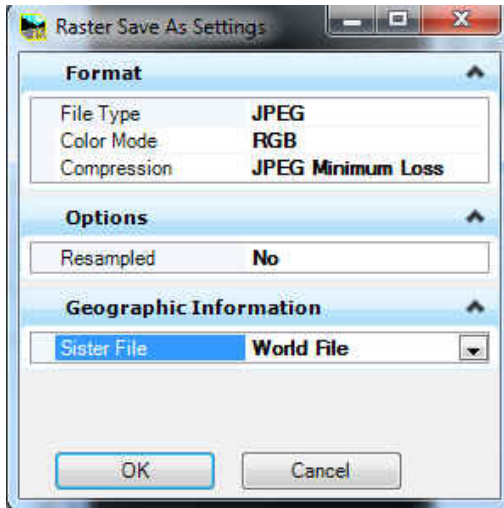
With Raster Manager open and the cropped image attached go to File (in the Raster Manager tool bar) then Save As.



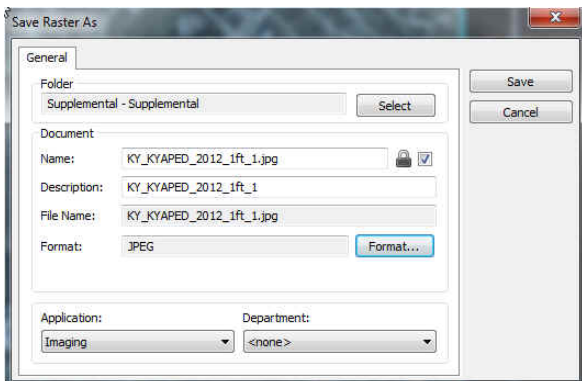
When "Save Raster As" opens a format has to be picked. Tap Format button



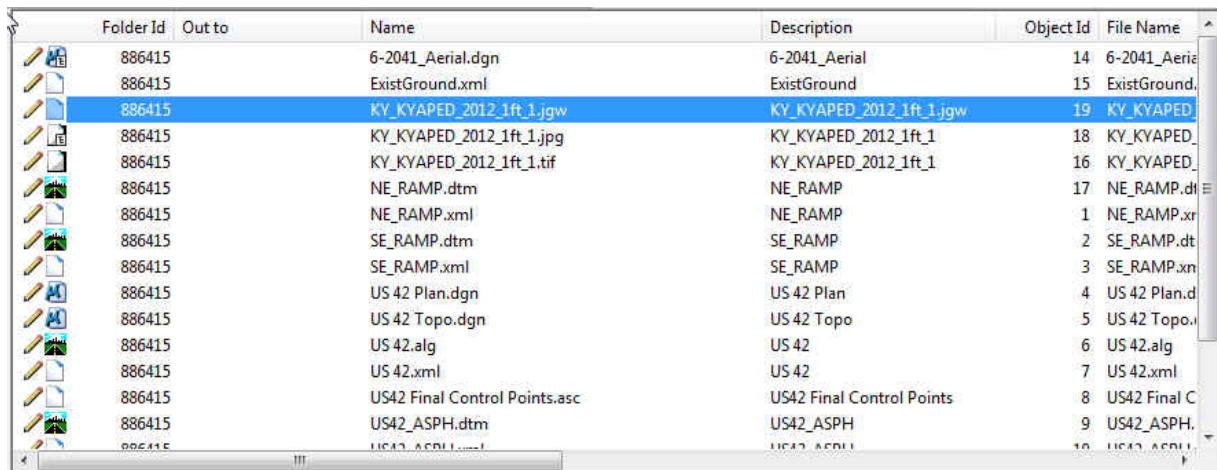
Change File Type to JPEG, Color Mode RGB, Compression JPEG Min Loss, Options: Resampled No and select "World File" from the drop down box.



Select Save



World file is saved to Project Wise folder as well as JPEG



Folder Id	Out to	Name	Description	Object Id	File Name
886415		6-2041_Aerial.dgn	6-2041_Aerial	14	6-2041_Aerie
886415		ExistGround.xml	ExistGround	15	ExistGround,
886415		KV_KYAPED_2012_1ft_1.jgw	KV_KYAPED_2012_1ft_1.jgw	19	KV_KYAPED,
886415		KY_KYAPED_2012_1ft_1.jpg	KY_KYAPED_2012_1ft_1	18	KY_KYAPED,
886415		KY_KYAPED_2012_1ft_1.tif	KY_KYAPED_2012_1ft_1	16	KY_KYAPED,
886415		NE_RAMP.dtm	NE_RAMP	17	NE_RAMP.d
886415		NE_RAMP.xml	NE_RAMP	1	NE_RAMP.xr
886415		SE_RAMP.dtm	SE_RAMP	2	SE_RAMP.dt
886415		SE_RAMP.xml	SE_RAMP	3	SE_RAMP.xn
886415		US 42 Plan.dgn	US 42 Plan	4	US 42 Plan.d
886415		US 42 Topo.dgn	US 42 Topo	5	US 42 Topo,
886415		US 42.alg	US 42	6	US 42.alg
886415		US 42.xml	US 42	7	US 42.xml
886415		US42 Final Control Points.asc	US42 Final Control Points	8	US42 Final C
886415		US42_ASPH.dtm	US42_ASPH	9	US42_ASPH,
886415		US42_ASPH.xml	US42_ASPH	10	US42_ASPH,

Export the JPG and JGW file to your desktop then drag and drop to your working folder in the TSC3. Then turn the Layers on in Map and turn your photo on.