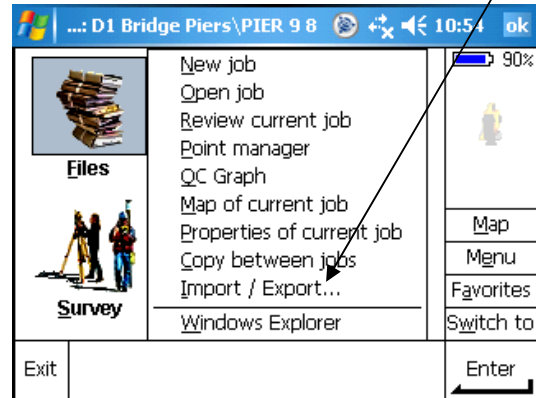
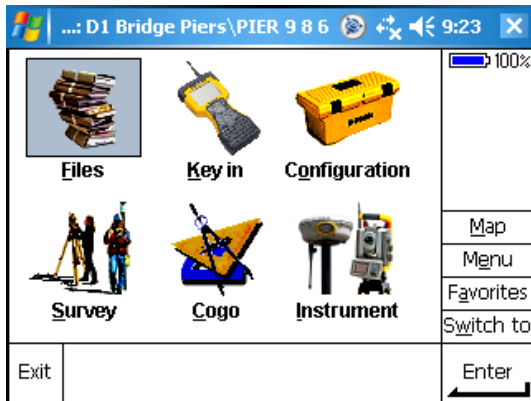


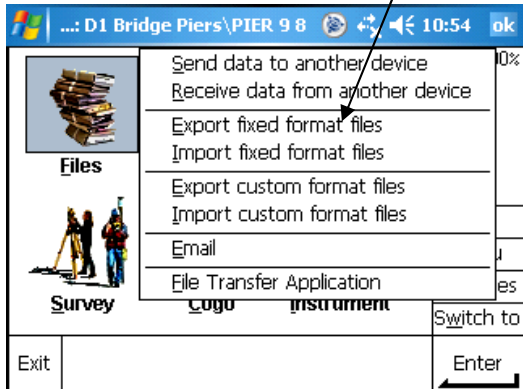
Creating and Exporting SDR file from TSC2 and Importing to Inroads Survey

From the Main Menu

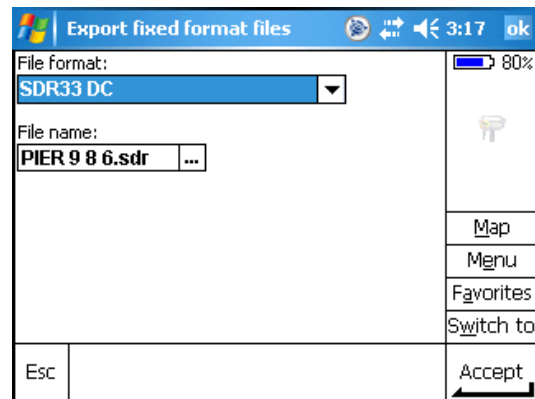
1) Select Files icon and tap Import/Export.



2) Select Export fixed format files.



3) From dropdown list under File Format select SDR33 DC. File name will have job name with and SDR extension then tap Accept. The file will be put in to an Export folder in the Job folder. If you don't have a job folder set up it will be in an Export folder under the Trimble Data.

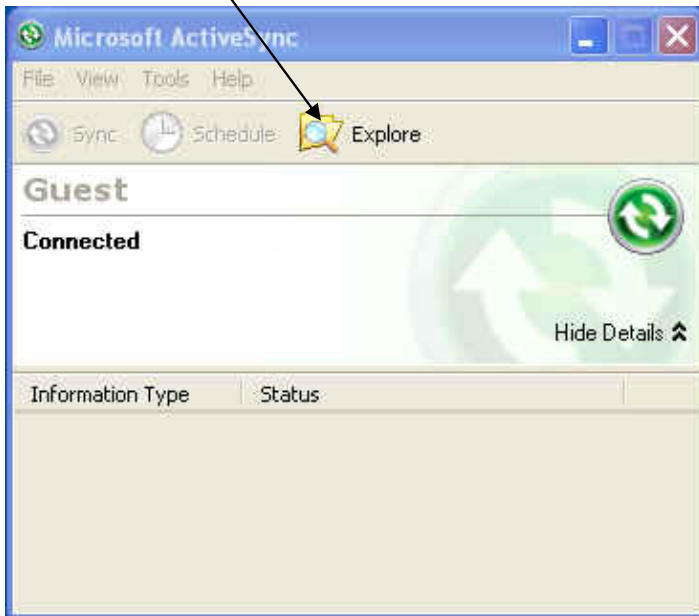


(Active Sync 4.5 should already have been loaded in the computer for the next procedure.)

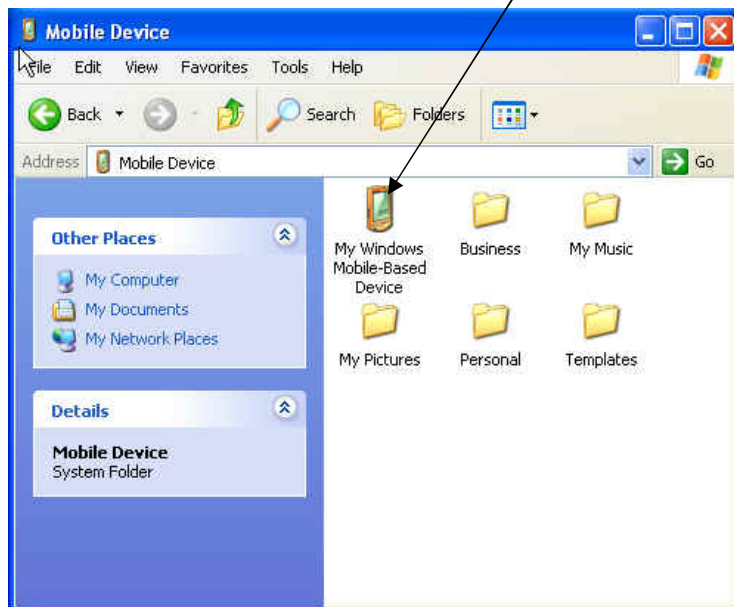
4) Connect the TSC2 to your desktop or workstation. The first panel that pops up select cancel.



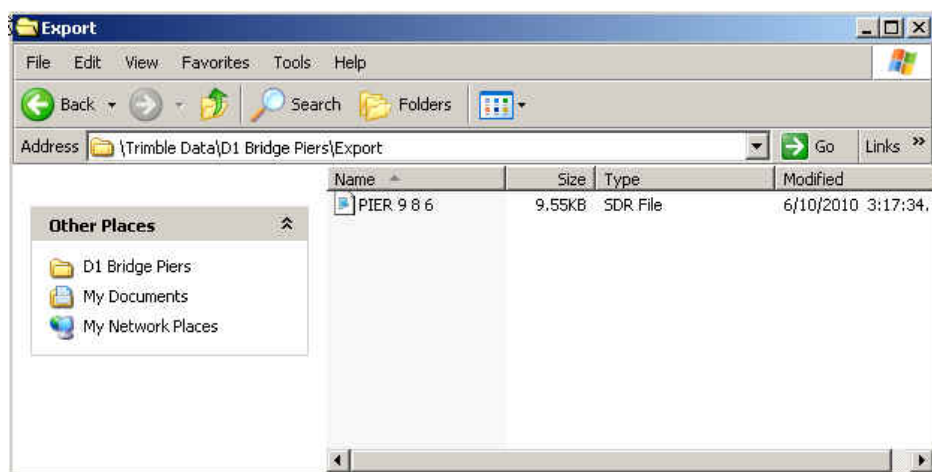
5) Select Explore



6) Select My Windows Mobile-Based Device

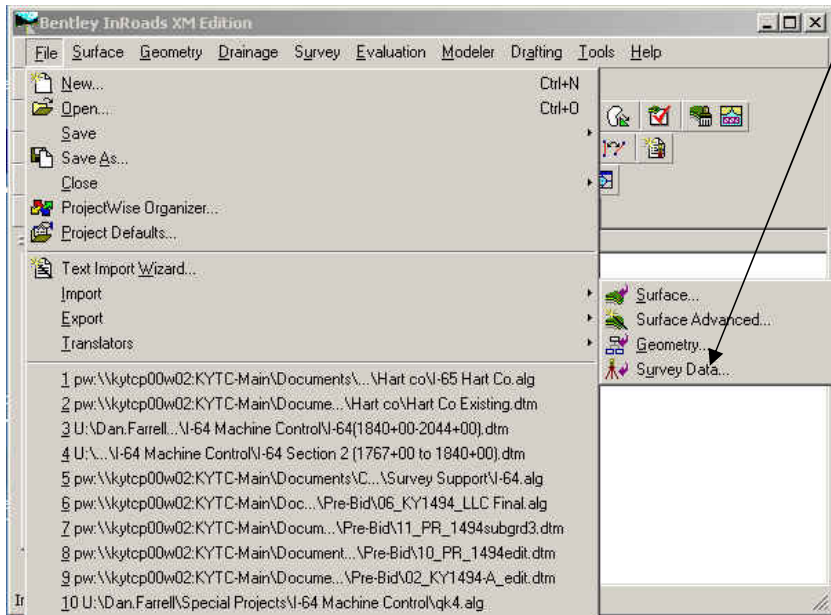


7) Select Trimble data Folder and job folder. Open Export folder then drag and drop the SDR file on your desktop. Then drop it in a Project Wise folder or wherever it can be easily accessed.

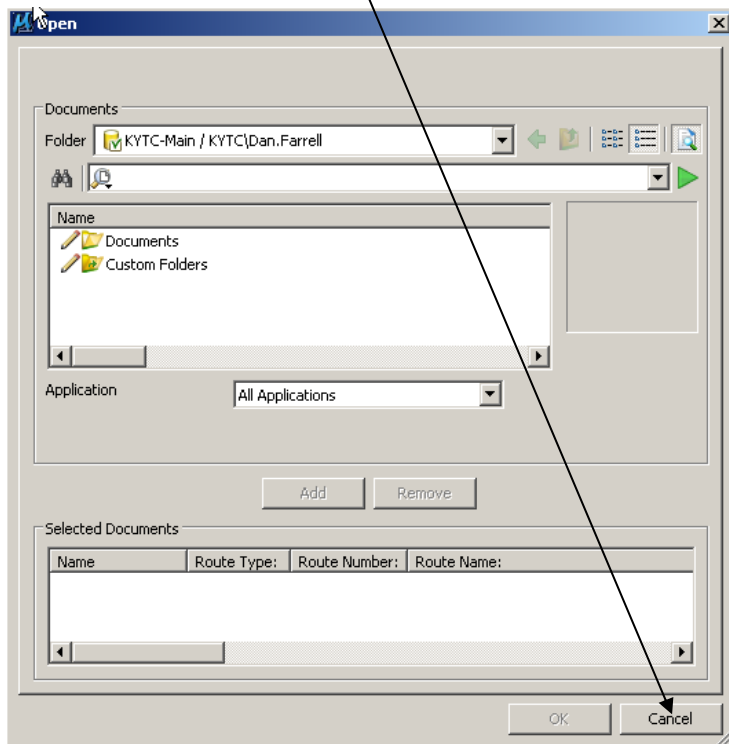


Exit out of Active Sync and launch Inroads.

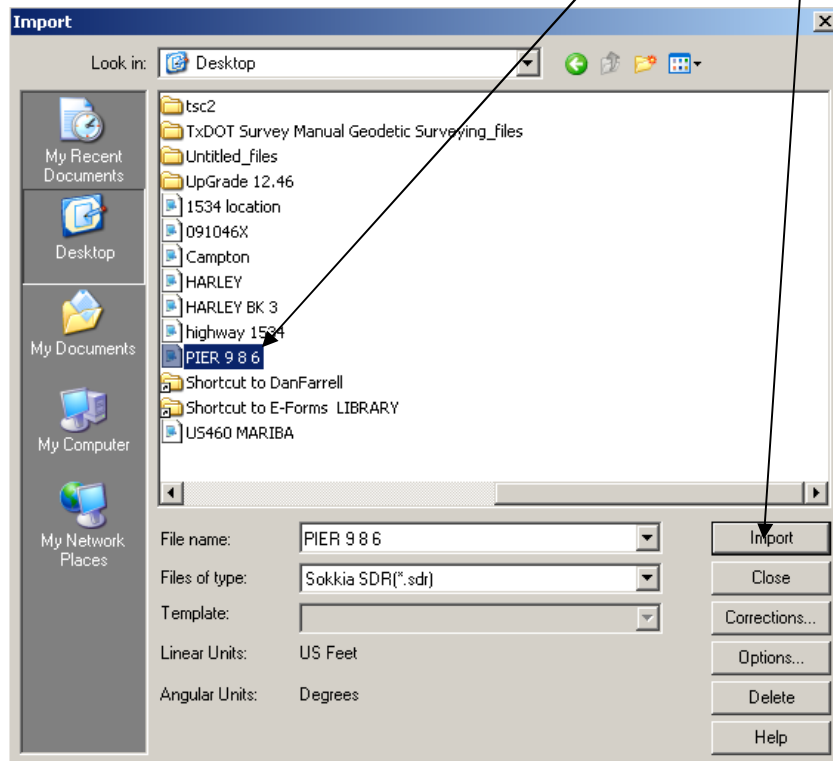
8) Once Inroads is open select File and drop down to Import Survey Data.



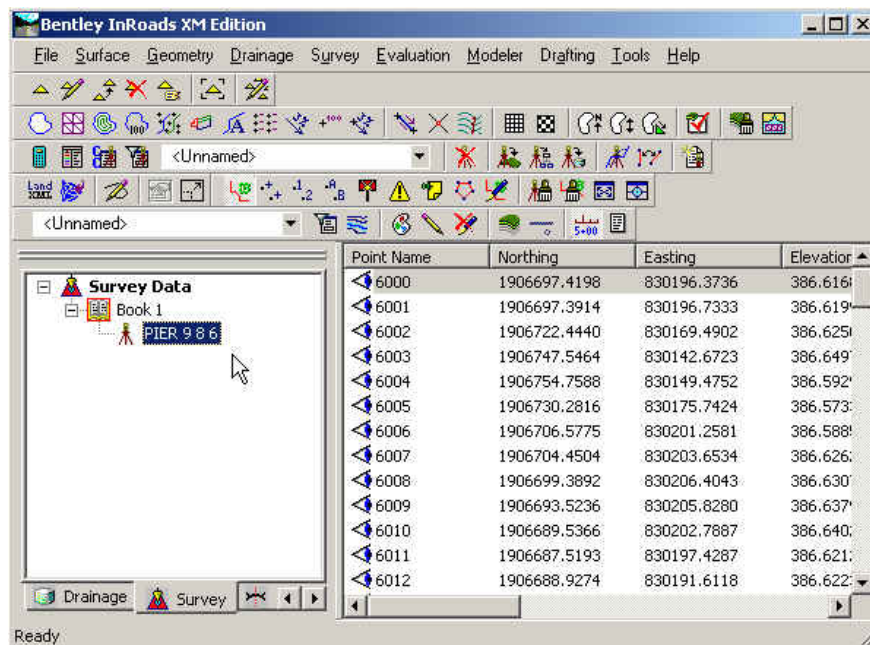
9) Project Wise window panel open's first but this file has been stored on the desktop. Cancel the Project Wise window panel .



10) Next the windows panel opens. Select the SDR file and select Import.



11) After Importing, cancel the Import selection window. Check the Microstation window and do a fit all. Lines and points should appear gray. Now check the field book. Tap expand on book 1; all points should be there.



Filename: Creating and Exporting SDR file from TSC2 and Importing to Inroads
Survey
Directory: U:
Template: C:\Documents and Settings\Dan.Farrell\Application
Data\Microsoft\Templates\Normal.dotm
Title:
Subject:
Author: Dan Farrell, PLS
Keywords:
Comments:
Creation Date: 6/10/2010 3:27:00 PM
Change Number: 2
Last Saved On: 7/13/2010 12:41:00 PM
Last Saved By: Dan Farrell, PLS
Total Editing Time: 300 Minutes
Last Printed On: 7/13/2010 12:42:00 PM
As of Last Complete Printing
Number of Pages: 5
Number of Words: 224 (approx.)
Number of Characters: 1,280 (approx.)