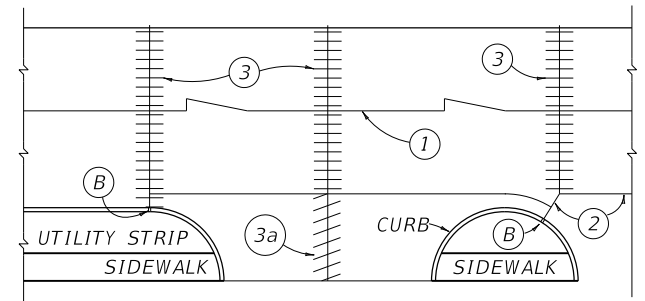
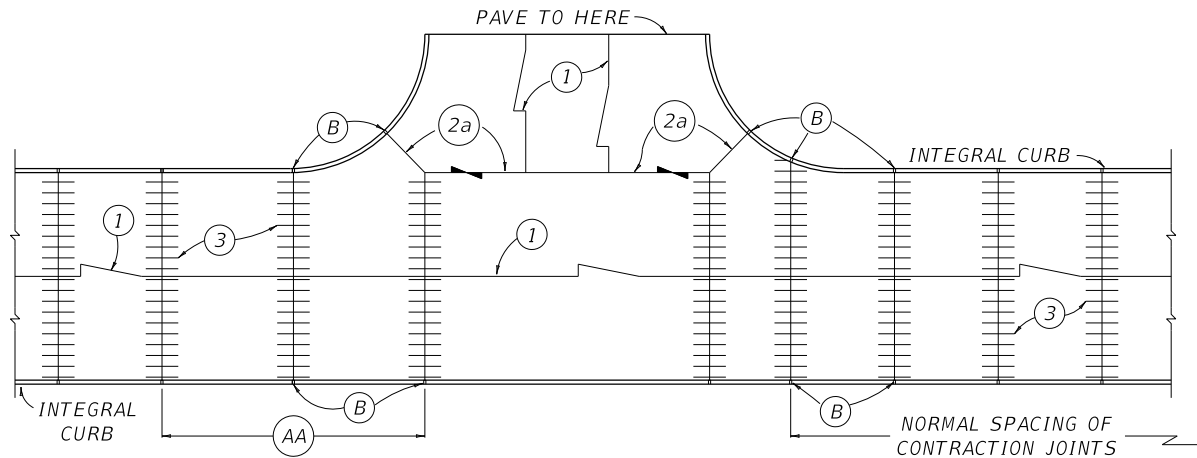


TYPICAL DIVIDED PAVEMENT WITH DEPRESSED MEDIAN AND CROSSOVER

- ~ NOTES ~
- (A) EQUALLY DIVIDE AND CONSTRUCT LONGITUDINAL SAWED JOINT WHEN DISTANCE BECOMES GREATER THAN 16'.
 - (B) 1/2" EXPANSION JOINT FILLER.
 - (C) TRANSVERSE CONTRACTION JOINT REQUIRED ONLY WHEN DISTANCE IN EXCESS OF NORMAL SPACING OF CONTRACTION JOINTS.
 - (D) NO CONTRACTION JOINTS REQUIRED BETWEEN THESE TWO CONTRACTION JOINTS WHEN DISTANCE IS LESS THAN NORMAL SPACING OF JOINTS. EQUALLY DIVIDE WHEN DISTANCE IS GREATER THAN 20' AND LESS THAN 40'.
 - E. ALL INTEGRAL CURBS CONSTRUCTED WITH CONCRETE BASE OR PAVEMENT SHALL HAVE JOINTS COINCIDING WITH THE TRANSVERSE JOINTS AND OTHER JOINTS SHOWN ON THIS STANDARD DRAWING.
 - F. THE JOINTS SHALL BE FILLED WITH 1/2" PREMOLDED EXPANSION JOINT FILLER, CUT TO THE REQUIRED SECTION.
 - G. SEE CUR. STD. DWG. *RPS-010* FOR JOINT SYMBOLS AND DETAILS.
 - (AA) THIS DISTANCE TO BE EQUALLY DIVIDED WHEN GREATER THAN 20' AND LESS THAN 40'.



COMMERCIAL ENTRANCE



CEMENT CONCRETE BASE WITH INTEGRAL CURB

USE WITH CUR. STD. DWG.
RPS-010

KENTUCKY
DEPARTMENT OF HIGHWAYS

CONCRETE
PAVEMENT JOINTS
TYPES AND SPACING

STANDARD DRAWING NO. *RPS-034-07*

SUBMITTED	<i>[Signature]</i>	12-01-15
DESIGNED BY	DATE	
APPROVED	<i>[Signature]</i>	12-01-15
STATE HIGHWAY ENGINEER	DATE	