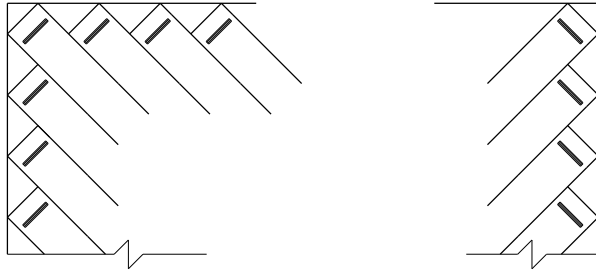


~ NOTES ~

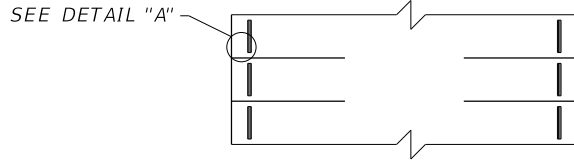
BID ITEM AND UNIT TO BID  
 PRECAST VEHICLE STOP

LF

1. THE UNIT PRICE BID PER LINEAR FOOT FOR "PRECAST VEHICLE STOP" SHALL INCLUDE ALL CLASS "A" CONCRETE, STEEL REINFORCEMENT, STEEL DOWELS, LABOR AND ALL INCIDENTALS NECESSARY FOR A COMPLETE INSTALLATION.
- ② THE PLANS SHALL SPECIFY THE LENGTHS OF THE INDEPENDENT UNITS. 2'-0", 4'-0", 6'-0" AND 8'-0" ARE STANDARD LENGTHS. 3'-0", 5'-0" AND 7'-0" LENGTHS MAY BE USED WHEN REQUIRED.
- ③ NO. 5 BARS - 1'-6" MIN. LENGTH. FILL VOID WITH BUTYL RUBBER CAULKING (COMMERCIAL GRADE) OR OTHER APPROVED MATERIAL.
- ④ NO. 3 DEFORMED BARS (OR LARGER) 3 REQUIRED.
5. THE MINIMUM REQUIREMENT FOR REINFORCING STEEL SHALL BE GRADE 40.
6. THE UNIT WEIGHS APPROXIMATELY 38 LBS./FT.
7. OTHER TYPES OF STOPS MAY BE PERMITTED IF APPROVED IN WRITING BY THE ENGINEER.

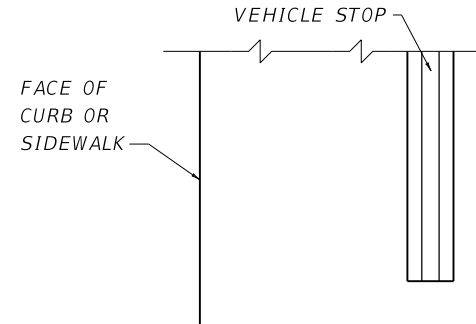


ANGLED PARKING



PERPENDICULAR PARKING

TYPICAL VEHICLE STOP  
 INSTALLATION

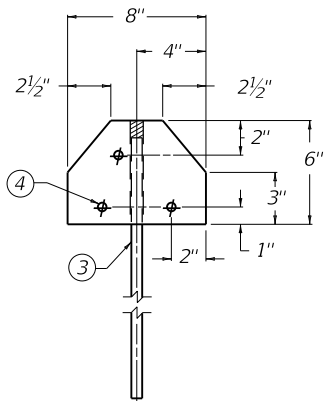


PLAN VIEW

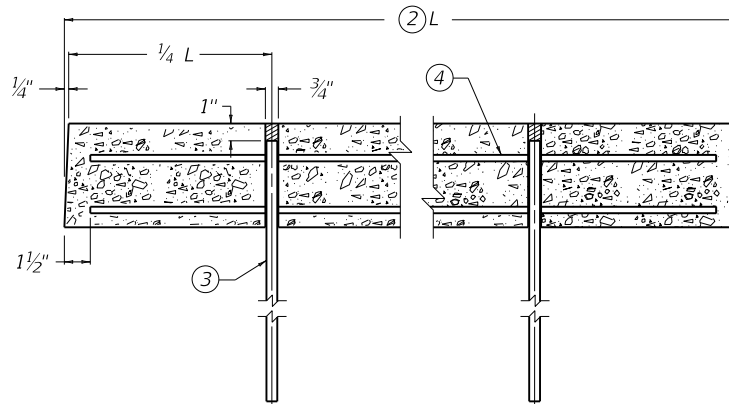


END ELEVATION

DETAIL "A"



END VIEW



SECTIONAL ELEVATION VIEW

KENTUCKY  
 DEPARTMENT OF HIGHWAYS

PRECAST  
 VEHICLE STOP

STANDARD DRAWING NO. RPM-130-04

SUBMITTED	<i>[Signature]</i>	12-01-15
DESIGNED BY	DATE OF DESIGN	DATE
APPROVED	<i>[Signature]</i>	12-01-15
	STATE HIGHWAY ENGINEER	DATE