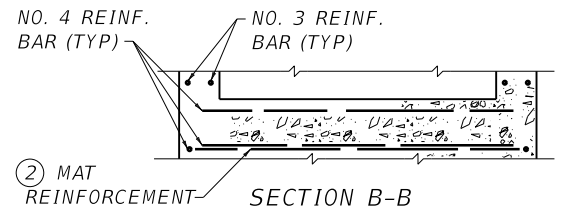
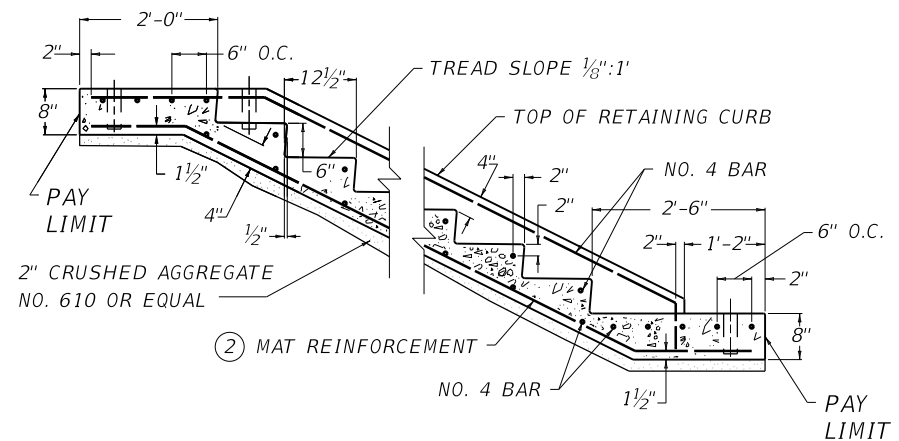


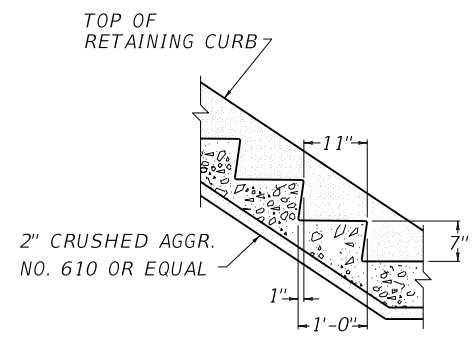
NO. 4 BAR
1 1/2"
1 1/2"
3"
NO. 3 BAR
ADDITIONAL HOLE REQUIRED FOR HANDRAIL TYPE A-2 OR A-4
PLAN VIEW



② MAT REINFORCEMENT
SECTION B-B



SECTION A-A 2:1 SLOPE



STEP DETAIL FOR 1 1/2 : 1 SLOPE

~ NOTES ~

- BID ITEM AND UNIT TO BID
CONCRETE-CLASS A FOR STEPS CUYD
- ① APPROXIMATE QUANTITY TO ADD FOR EACH ADDITIONAL FOOT OF WIDTH OVER 4'-0".
 - ② MAT REINFORCEMENT IN BOTTOM OF THE STEPS SHALL BE WIRE FABRIC OR BAR MAT REINFORCEMENT.
 3. MAT REINFORCEMENT:
(A) NO. 4 REINFORCEMENT BARS, LONGITUDINAL BARS 6" O.C. AND TRANSVERSE BARS 12" O.C. MIN. GRADE 40; OR WELDED WIRE FABRIC - 6x6 - W4xW4 58 LBS./100 SQ. FT.
(B) NO. 4 REINFORCEMENT BARS ADDITIONALLY AS SHOWN.
(C) NO. 3 REINFORCEMENT BARS ADDITIONALLY AS SHOWN.
 4. ROUND ALL EXPOSED EDGES AND CORNERS 1/4" R.
 5. HANDRAIL SHALL BE REQUIRED WITH THREE OR MORE STEPS.
 6. REINFORCING STEEL SHALL BE PLACED SO NOT TO INTERFERE WITH HANDRAIL POSTS.

TABLE OF QUANTITIES

SLOPE	LOCATION	ADDITIONAL NO. 4 BAR REINF. (LBS.)		MAT REINFORCEMENT				CU. YDS. CLASS "A" CONCRETE	
		4' WIDTH	①	4' WIDTH	①	4' WIDTH	①	4' WIDTH	①
2:1	BOTTOM LANDING	23.547	3.340	11.776	2.375	27.388	5.177	0.337	0.059
	INTERMEDIATE STEP	10.855	1.336	5.991	1.208	12.191	2.283	0.16	0.025
	TOP LANDING	22.483	3.340	9.504	1.917	20.708	3.897	0.265	0.051
1 1/2:1	BOTTOM LANDING	23.603	3.340	12.602	2.542	28.613	5.400	0.36	0.062
	INTERMEDIATE STEP	10.271	1.336	5.268	1.063	11.119	2.088	0.16	0.025
	TOP LANDING	22.545	3.340	9.710	1.958	21.014	3.952	0.281	0.054

USE WITH CUR. STD. DWG.
RGX-030

KENTUCKY DEPARTMENT OF HIGHWAYS	
CONCRETE STEPS	
STANDARD DRAWING NO. RGX-020-13	
SUBMITTED <i>[Signature]</i> DIRECTOR, BUREAU OF DESIGN	12-01-15 DATE
APPROVED <i>[Signature]</i> STATE HIGHWAY ENGINEER	12-01-15 DATE