

4" THREADED STEEL PIPE CAP

4'-0"
(INITIAL SECTION ONLY)

4" STEEL PIPE
THREADED ON ONE END

5'-3"

PL 1/2 x 36 x 3'-0"
(CENTER CUT OUT 3 3/4" DIA.)

3/8"

1/2"

2 1/2" STEEL PIPE (VERTICAL)
THREADED ON BOTH ENDS

LOOSE
FILL

2'-0"

2 1/2" SCREW END FLANGE

PL 1/2 x 36 x 3'-0"
(LEVEL)

3/8"

PL 1/2 x 14 x 1'-2"
WELD OR BOLT
(SEE PLAN VIEW)

GROUND SURFACE

1/2"

2" SAND BASE

ELEVATION VIEW

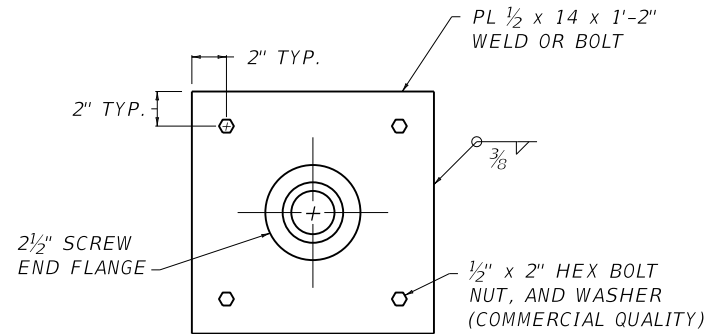
3'-0"

~ NOTES ~

1. ADDITIONAL PIPE SHALL BE FURNISHED IN 5'-3" SECTIONS (DUE TO COMMERCIAL PIPE LENGTHS OF 21'-0") THREADED ON BOTH ENDS, PAID FOR PER LF AND SHALL MEET THE REQUIREMENTS OF SECTION 810.05.03 OF THE CURRENT STANDARD SPECIFICATIONS.
2. PIPE SIZES ARE GIVEN IN NOMINAL DIAMETERS.

BID ITEMS AND UNIT TO BID
 SETTLEMENT PLATFORM
 STEEL PIPE-2 1/2 IN
 STEEL PIPE-4 IN

EACH
 LF
 LF



PLAN VIEW

KENTUCKY
 DEPARTMENT OF HIGHWAYS

SETTLEMENT
 PLATFORM

STANDARD DRAWING NO. RGX-015-03

SUBMITTED *W. P. [Signature]* 12-01-15
DIRECTOR, DIVISION OF DESIGN DATE

APPROVED *[Signature]* 12-01-15
STATE HIGHWAY ENGINEER DATE