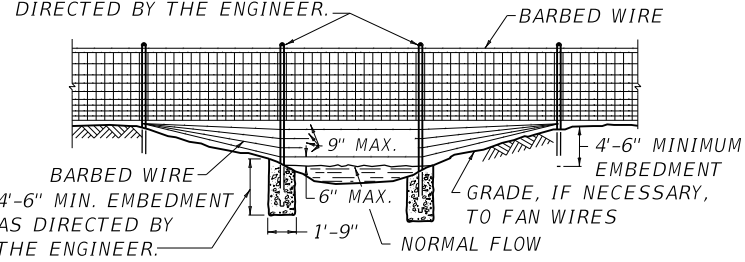
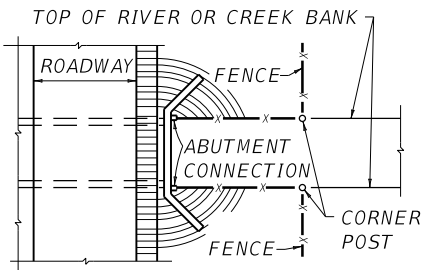


**TYPE A CROSSING**

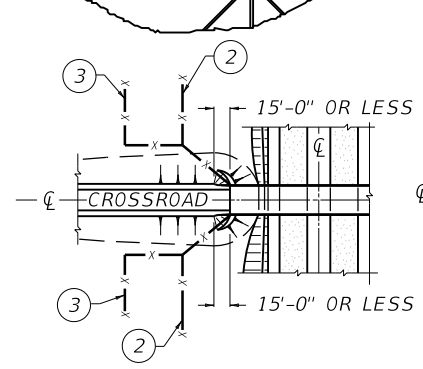
EXTRA LENGTH POST AS DIRECTED BY THE ENGINEER.



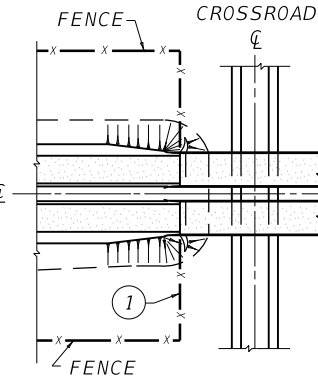
**TYPE B CROSSING**



**TYPICAL FENCE INSTALLATION FOR BOX CULVERT USED AS CATTLE CROSSING**



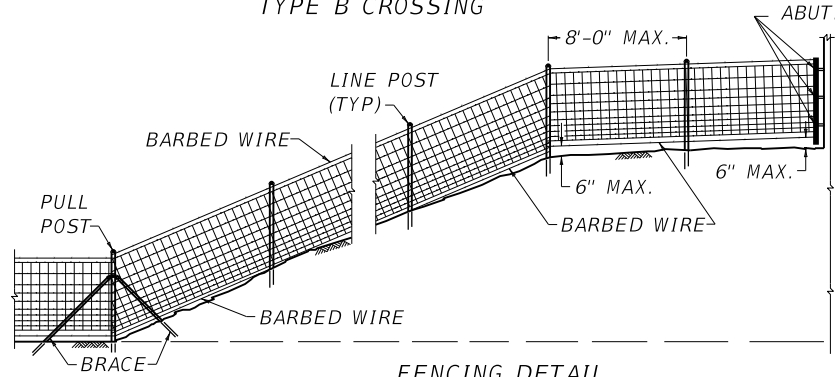
**HIGHWAY UNDER CROSSROAD**



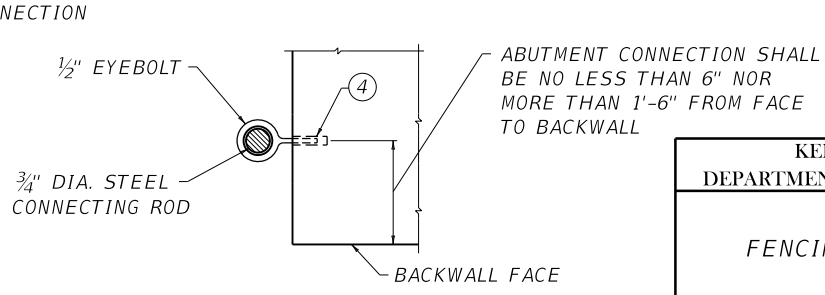
**HIGHWAY OVER CROSSROAD**

**~ NOTES ~**

- ① NORMAL WAY OF HANDLING FENCE WHEN THE HIGHWAY IS OVER THE CROSSROAD AS SHOWN.
- ② WHEN HIGHWAY RIGHT-OF-WAY IS 15'-0" OR LESS FROM THE FACE OF BACKWALL PROJECTED, ANGLE FENCE INTO ABUTMENT FROM TOE OF SLOPE AS SHOWN.
- ③ WHEN HIGHWAY RIGHT-OF-WAY IS GREATER THAN 15'-0" FROM THE FACE OF BACKWALL PROJECTED, ANGLE FENCE PARALLEL TO THE CENTERLINE OF CROSSROAD AND INTERSECT DETAIL 2 AS SHOWN.
- ④ 1/2" x 2" SELF-DRILL ANCHOR AND EYEBOLT ASSEMBLY.
- 5. ALL MATERIAL FOR ABUTMENT CONNECTION SHALL BE GALVANIZED.



**FENCING DETAIL**



**ABUTMENT CONNECTION**

<b>KENTUCKY DEPARTMENT OF HIGHWAYS</b>		
<b>FENCING DETAILS</b>		
STANDARD DRAWING NO. RFW-001-06		
SUBMITTED	<i>W. P. Seal</i> DESIGNED BY	12-01-15 DATE
APPROVED	<i>Shel</i> STATE HIGHWAY ENGINEER	12-01-15 DATE