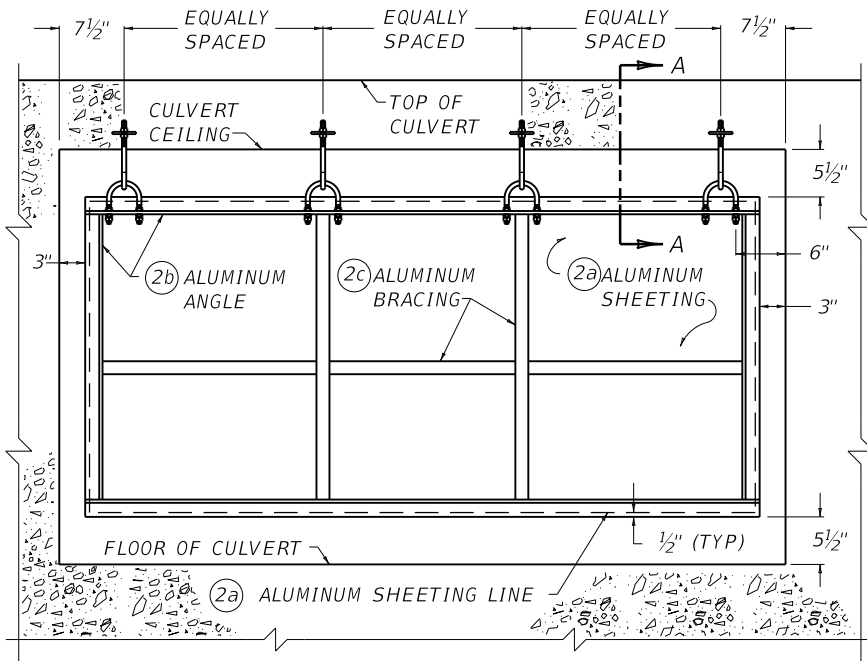


~ NOTES ~

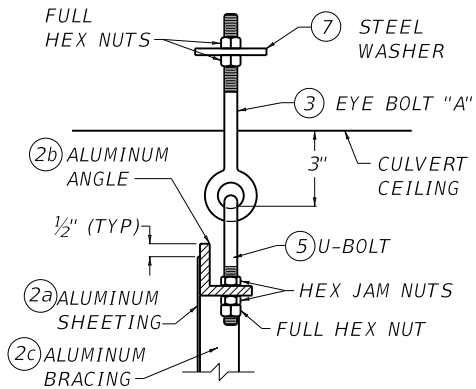
BID ITEM AND UNIT TO BID
WATER GATE TYPE 3

EACH

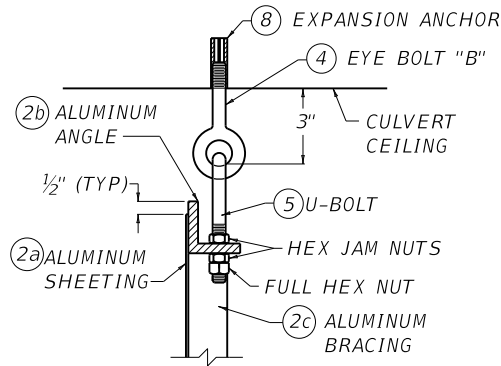
1. THE CONTRACT UNIT PRICE SHALL INCLUDE LABOR, MATERIALS, INSTALLATION, AND ALL NECESSARY INCIDENTALS TO COMPLETE THE INSTALLATION. TWO OR MORE SECTIONS PER CULVERT OPENING EQUALS ONE WATER GATE TYPE 3.
2. COMMERCIAL GRADE ALUMINUM
 - ②a SHEETING - 0.090" THICK, MILL FINISH.
 - ②b ANGLES - 2" x 2" x 3/8" @ 1.60 LBS./LIN. FT.
 - ②c BRACING - 1 1/2" x 1 1/2" x 1/8" SQUARE TUBING @ 0.826 LB./LIN. FT.
- ③ EYEBOLT "A" - GALVANIZED, WELDLESS, 1/2" DIA., 6" SHANK, 1" EYE I.D., 3" THREAD.
- ④ EYEBOLT "B" - GALVANIZED, WELDLESS, 1/2" DIA., 2 1/2" SHANK, 1" EYE I.D., 1" THREAD.
- ⑤ U-BOLTS - CADMIUM PLATED STEEL, 3" BETWEEN LEGS, 4 1/2" INSIDE LENGTH, 5" OUTSIDE LENGTH, 2" THREAD, 1/2" DIA.
- ⑥ HEX FULL NUTS AND JAM NUTS - 1/2" DIA., 13 THREADS/IN., FINISHED, DOUBLE CHAMFERED.
- ⑦ STEEL WASHER - 5/8" I.D., 2 3/4" O.D.
- ⑧ EXPANSION ANCHORS - 6000 LBS. MINIMUM HOLDING POWER.
9. WELD ANGLE AND BRACE CONNECTIONS FULLY ON ALL EXPOSED SIDES.
10. WELD SHEETING ON BOTH SIDES TO ANGLES AND BRACING AS SHOWN.
11. CULVERT OPENINGS GREATER THAN 10' IN WIDTH - USE MINIMUM OF TWO EQUAL WIDTH SECTIONS PER OPENING WITH 3" GAP BETWEEN SECTIONS (SEE DETAIL "A"). NO SECTION SHALL EXCEED 10' IN WIDTH.
12. USE OF ONE CONTINUOUS ALUMINUM SHEET IS DESIRABLE; HOWEVER IF MORE THAN ONE SHEET IS USED AND THE SEAMS DO NOT FIT THE MINIMUM REQUIRED BRACING DIAGRAM, ADDITIONAL SYMMETRICALLY PLACED BRACING SHALL BE REQUIRED. NO SEAMS SHALL BE VISIBLE FROM THE BRACING SIDE OF THE GATE.



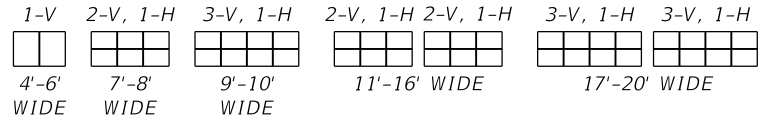
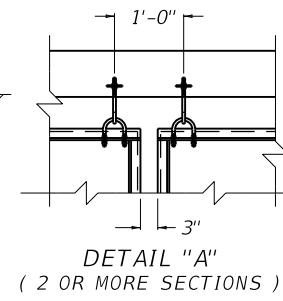
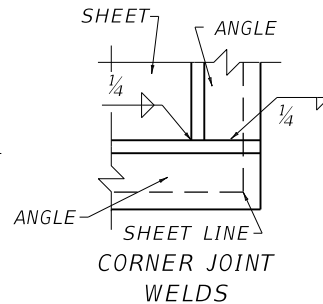
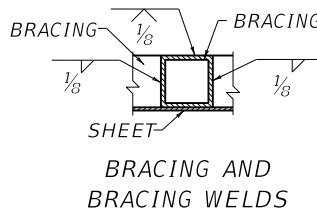
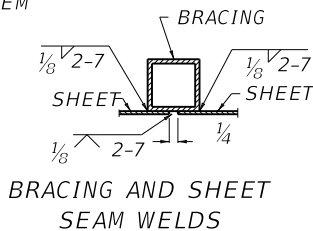
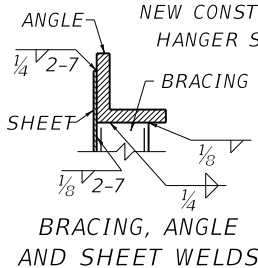
TYPICAL WATER GATE INSTALLATION



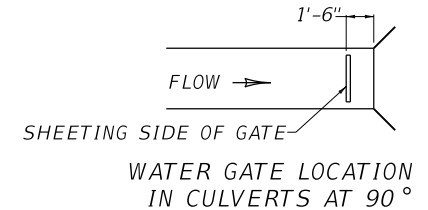
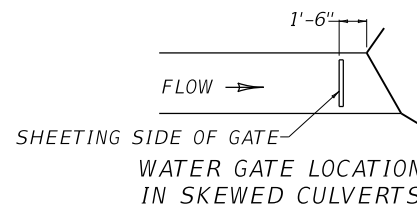
SECTION A-A
NEW CONSTRUCTION
HANGER SYSTEM



SECTION A-A
EXISTING CONSTRUCTION
HANGER SYSTEM



MINIMUM HOR. AND VER. BRACING SYSTEMS FOR VARIOUS WIDTH CULVERT OPENINGS.
ONE (1) ADDITIONAL HOR. BRACE REQUIRED FOR CULVERT OVER 10' IN HEIGHT.



KENTUCKY DEPARTMENT OF HIGHWAYS		
WATER GATE TYPE 3		
STANDARD DRAWING NO. RFG-011-06		
SUBMITTED	<i>W. P. Seal</i> DESIGNED BY	12-01-15 DATE
APPROVED	<i>W. P. Seal</i> STATE HIGHWAY ENGINEER	12-01-15 DATE