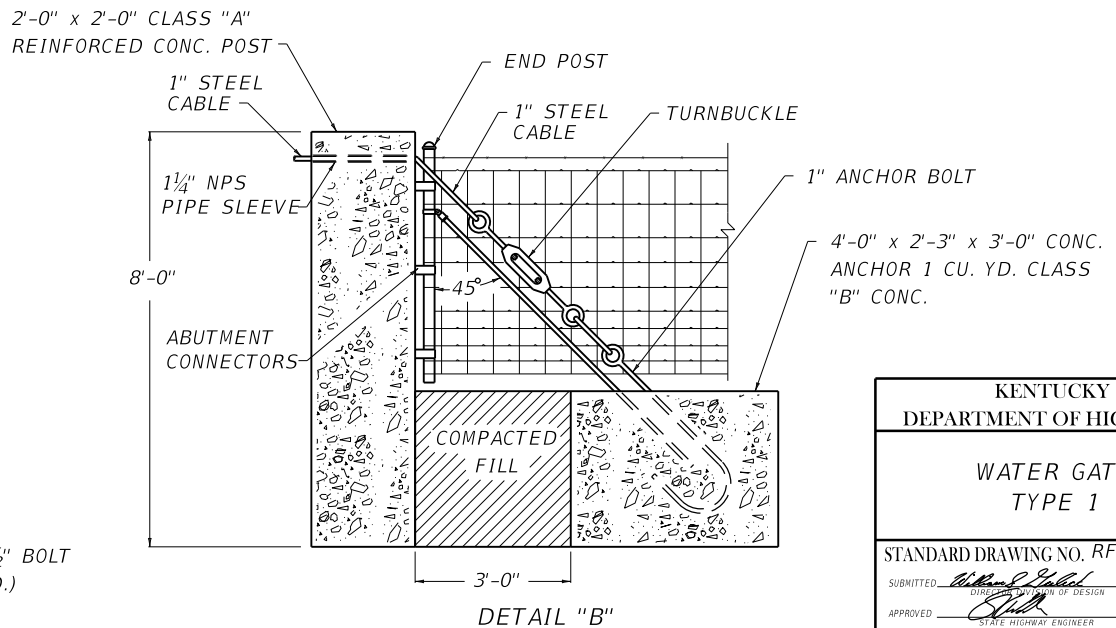
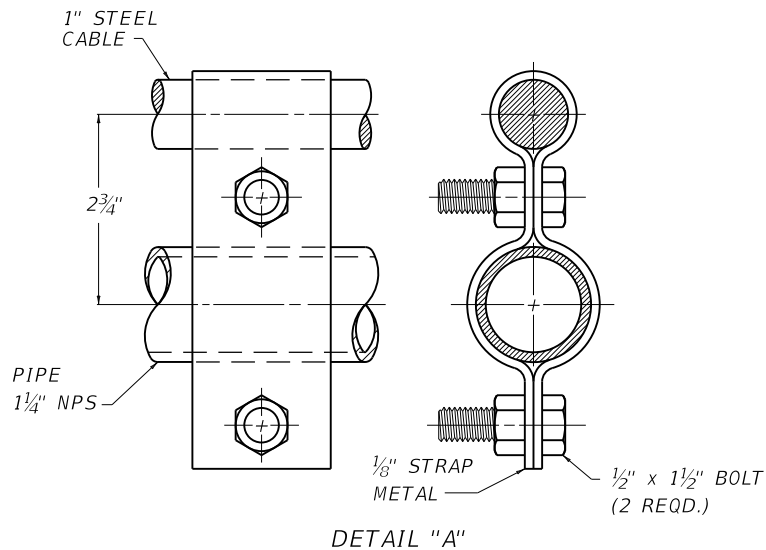


~ NOTES ~

1. THIS ILLUSTRATION DEPICTS WATER GATE TYPE 1 USING WOVEN WIRE FABRIC.
2. FABRIC TIE WIRES SHALL BE SPACED 1'-0" ON CENTERS. THE CONTRACTOR IS NOT TO ORDER GATES OF ANY TYPE UNTIL THEIR NECESSITY AND LOCATION ARE CERTIFIED BY THE ENGINEER.
3. ALL FENCE FITTINGS SHALL COMPLY WITH ASTM F626.
4. WOVEN-WIRE FABRIC USED ON WATER GATE TYPE 1 SHALL BE EITHER ALUMINUM-COATED STEEL NO. 1047-6-9 OR ZINC COATED STEEL NO. 1047-6-9.
5. WATER GATES SHALL HAVE HEAVY PRESSED STEEL CORNERS SECURELY RIVETED OR SHALL BE MACHINE NOTCHED AND ELECTRICALLY WELDED SO AS TO BE RIGID AND WATER TIGHT. ALL WELDED JOINTS SHALL BE CLEANED AND PAINTED WITH TWO (2) COATS OF ALUMINUM PAINT.
6. NPS = NOMINAL PIPE SIZE - ASTM F1083 AND F1043 (HEAVY INDUSTRIAL FENCE) SHALL GOVERN.

BID ITEMS AND UNIT TO BID
 WATER GATE TYPE 1
 CONCRETE-CLASS A
 CONCRETE-CLASS B
 STEEL REINFORCEMENT

EACH
 CUYD
 CUYD
 LB



KENTUCKY DEPARTMENT OF HIGHWAYS	
WATER GATE TYPE 1	
STANDARD DRAWING NO. RFG-010-05	
SUBMITTED <i>[Signature]</i>	12-01-15 DATE
APPROVED <i>[Signature]</i>	12-01-15 DATE
STATE HIGHWAY ENGINEER	