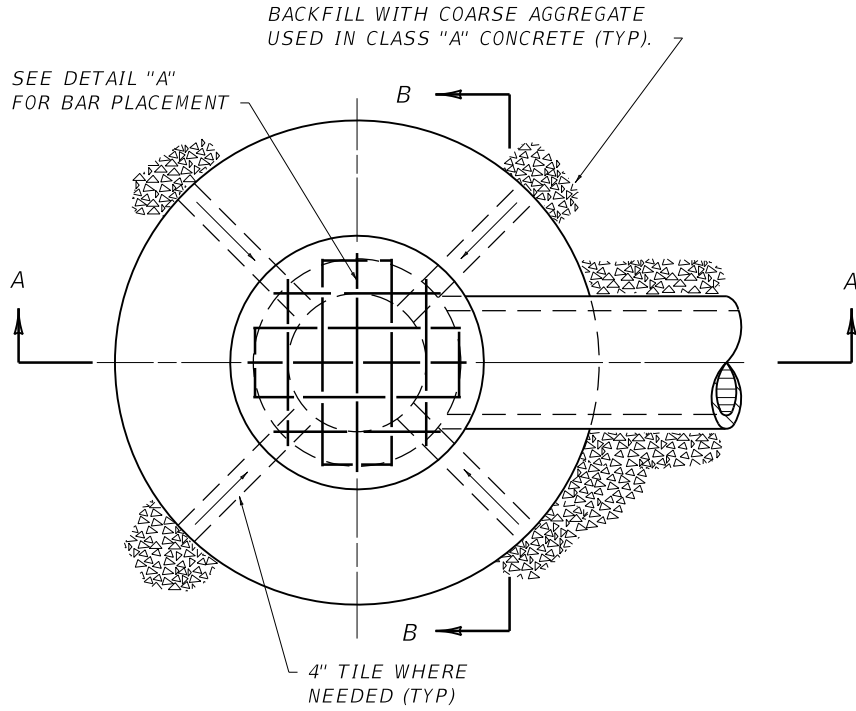


~ NOTES ~

BID ITEM AND UNIT TO BID
SPRING BOX INLET TYPE B

EACH

- ① 12", 15", OR 18" DIAMETER PIPE OUTLET (SEE PIPE SECTIONS FOR SIZE AND TYPE). MORTAR AROUND PIPE TO PREVENT SEEPAGE.
- 2. SPRING BOX INLET TYPE "B" MAY BE USED WHEN FILL OVER TOP IS LESS THAN 10'-0".
- 3. STEEL REINFORCEMENT PLACED 6" ON CENTERS.
- 4. "t" IS CONCRETE PIPE WALL THICKNESS OR METAL PIPE CORRUGATION DEPTH.



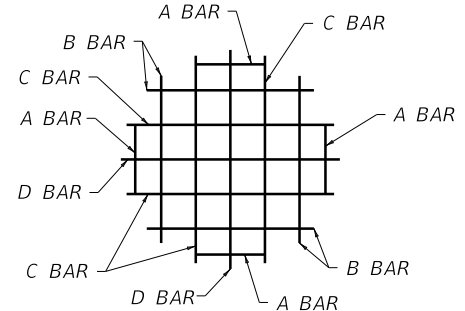
PLAN VIEW

STEEL REINFORCEMENT FOR CONCRETE COVER

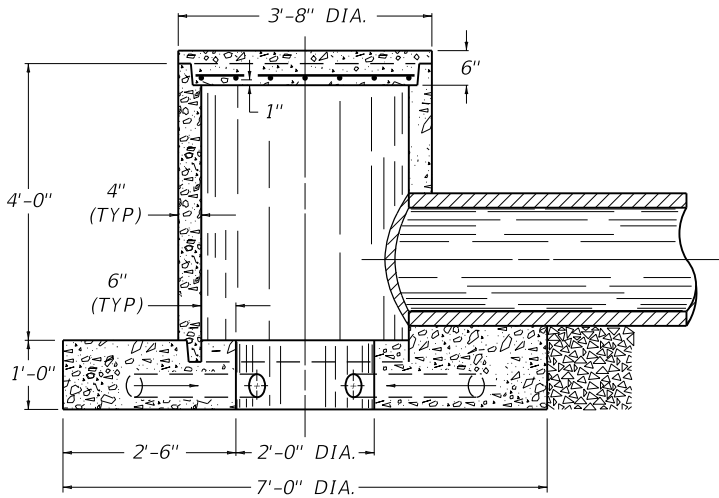
NO. 3 STEEL BARS			TOTAL LBS.
BAR	QTY.	LENGTH	
A	4	1'-0"	13
B	4	2'-5"	
C	4	3'-0"	
D	2	3'-2"	

CLASS "A" CONCRETE

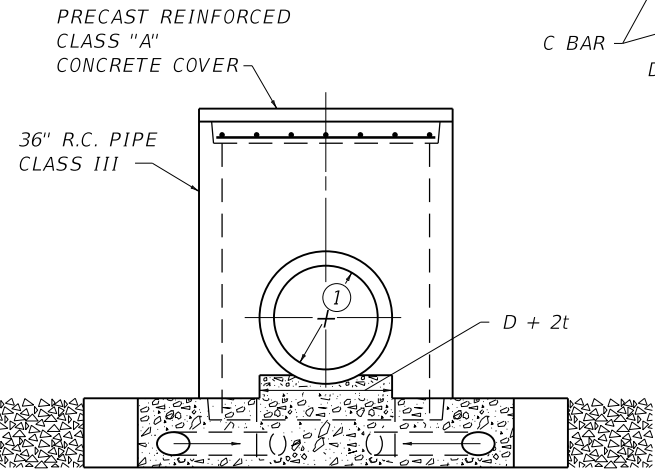
PIPE DIA.	CU. YDS. CONCRETE
12"	1.54
15"	
18"	



DETAIL "A"



SECTION A-A



SECTION B-B

KENTUCKY
DEPARTMENT OF HIGHWAYS

SPRING BOX INLET
TYPE B

STANDARD DRAWING NO. RDX-011-05

SUBMITTED *[Signature]* DIRECTOR, DEPT. OF DESIGN 12-01-15
DATE

APPROVED *[Signature]* STATE HIGHWAY ENGINEER 12-01-15
DATE