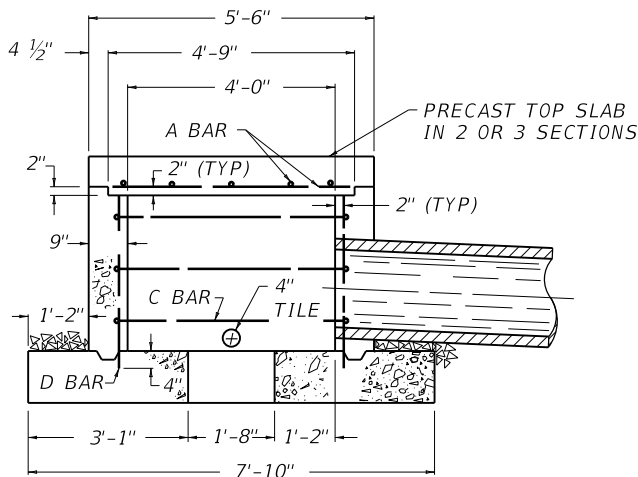
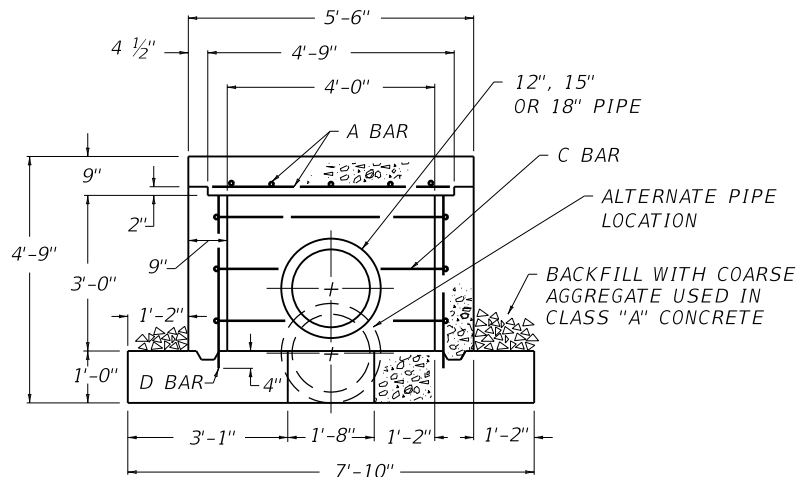


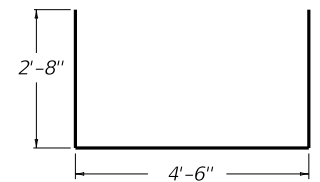
PLAN VIEW



SECTION B-B



SECTION A-A



C BAR DETAIL

~ NOTES ~

- BID ITEM AND UNIT TO BID  
 SPRING BOX INLET TYPE A EACH
1. LOCATION OF OPENING MAY BE DETERMINED IN THE FIELD FOR A SIDE OR BOTTOM SPRING INLET.
  2. SPRING INLET TYPE "A" SHALL BE USED WHEN FILL OVER TOP IS 10' OR MORE.

STEEL REINFORCEMENT

NO. 4 STEEL BARS			TOTAL LBS.
BAR	QTY.	LIN. FT.	
A	10	4'-7"	105
C	6	9'-9"	
D	16	3'-4"	

CLASS "A" CONCRETE

PIPE DIA.	CU. YDS. CONCRETE
12"	4.61
15"	4.59
18"	4.58

KENTUCKY  
 DEPARTMENT OF HIGHWAYS

SPRING BOX  
 INLET  
 TYPE A

STANDARD DRAWING NO. RDX-010-05

SUBMITTED *W. P. Galt* 12-01-15  
 DIRECTOR, DIVISION OF DESIGN DATE  
 APPROVED *John* 12-01-15  
 STATE HIGHWAY ENGINEER DATE