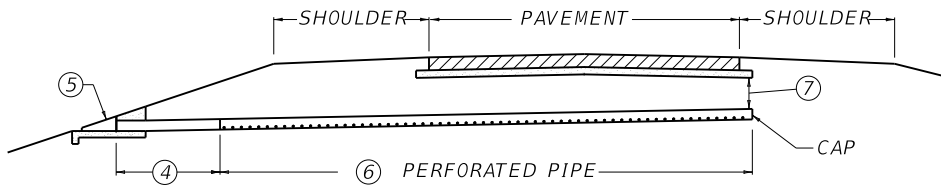
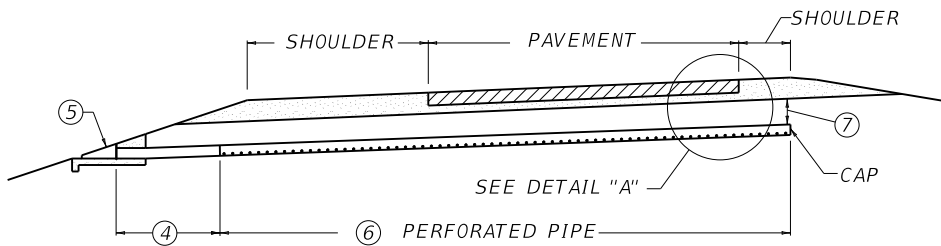


TYPICAL SUBGRADE DRAINAGE LOCATIONS

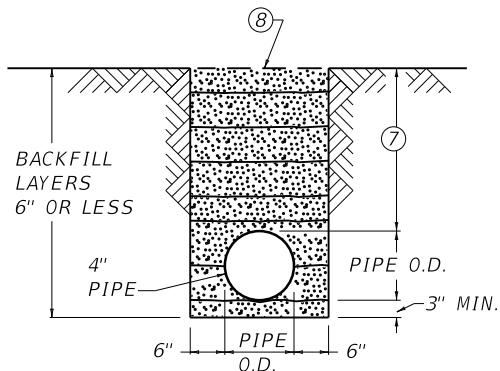
~ NOTES ~



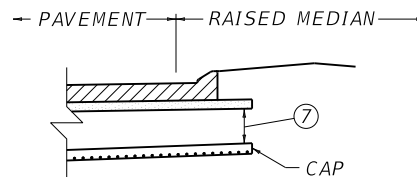
TANGENT SECTION - TWO LANE



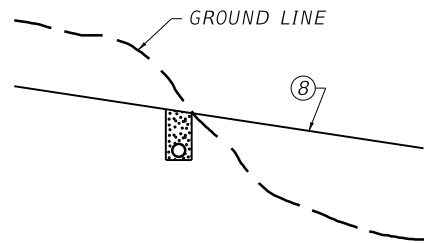
TANGENT SECTION - MULTI LANE



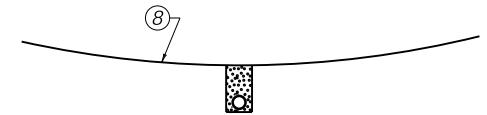
TRENCH DETAIL



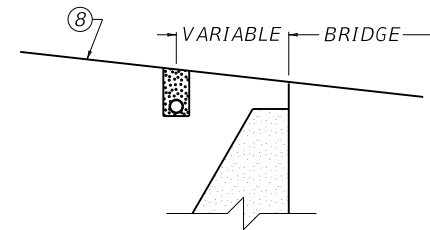
RAISED MEDIAN  
DETAIL "A"



CUT TO FILL



SAG VERTICAL CURVES



SUBGRADE DRAINAGE SHALL BE INSTALLED AT UPGRADE END OF BRIDGE ONLY.

BRIDGES

BID ITEM AND UNIT TO BID

PERFORATED PIPE -  $\Delta$  IN LF

NON-PERFORATED PIPE -  $\Delta$  IN LF

$\Delta$  = PIPE DIA. IN INCHES

1. SUBGRADE DRAINAGE, AS DEPICTED, IS INTENDED FOR USE WITH THE SURFACING PHASE OF CONSTRUCTION, AND SHALL BE INSTALLED ONLY AFTER THE SUBGRADE HAS BEEN COMPLETED, AND PRIOR TO CONSTRUCTING PAVING MATERIALS.
2. SUBGRADE DRAINAGE WILL NOT BE REQUIRED WHEN:
  - a. ROCK SUBGRADE OR NATURAL BANK GRAVEL IS SPECIFIED.
  - b. POROUS OR FREE DRAINING SUBGRADES ARE EVIDENT.
  - c. DIRECTED BY THE ENGINEER.
3. THE CAP SHALL BE A STANDARD MANUFACTURED ITEM FURNISHED BY PIPE SUPPLIER.
- ④ APPROXIMATELY 8 TO 12 FEET OF PIPE AT THE OUTLET SHALL BE NON-PERFORATED PIPE MEETING THE REQUIREMENTS OF THE PERFORATED PIPE, EXCEPT FOR PERFORATIONS.
- ⑤ PERFORATED PIPE HEADWALL REQUIRED AT OUTLET. SEE CUR. STD. DWG. RDP-010.
- ⑥ SEE CUR. STD. DWG. RDP-001 FOR ALTERNATES.
- ⑦ PIPE COVER: 2'-0" DESIREABLE MINIMUM, 1'-0" ABSOLUTE MINIMUM. FLOW SHALL BE DIRECTED TOWARD THE FILL SIDE OF THE ROADWAY WHEN POSSIBLE.
- ⑧ SUBGRADE ELEVATION.

USE WITH CUR. STD. DWGS.  
RDP-001 RDP-010

KENTUCKY DEPARTMENT OF HIGHWAYS		
PERFORATED PIPE FOR SUBGRADE DRAINAGE ON TWO-LANE (CLASS 2) AND MULTI-LANE ROADS		
STANDARD DRAWING NO. RDP-005-05		
SUBMITTED	<i>[Signature]</i> DESIGNED BY	12-01-15 DATE
APPROVED	<i>[Signature]</i> STATE HIGHWAY ENGINEER	12-01-15 DATE