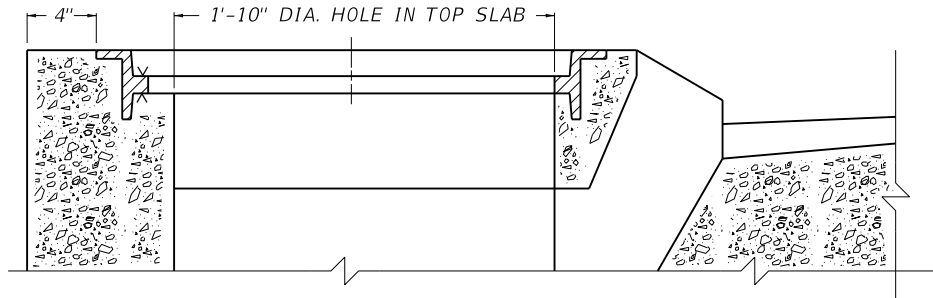


SECTION OF FRAME  
WHEN USED WITH MANHOLES



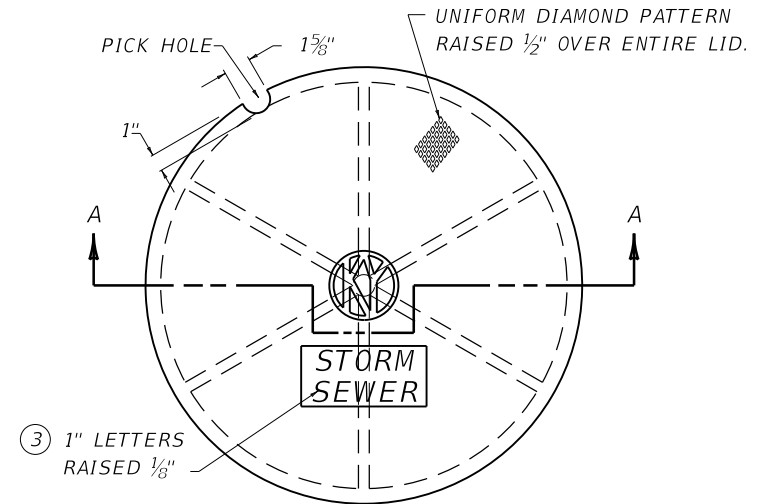
SECTION OF FRAME WHEN  
USED WITH CURB BOX INLET

~ NOTES ~

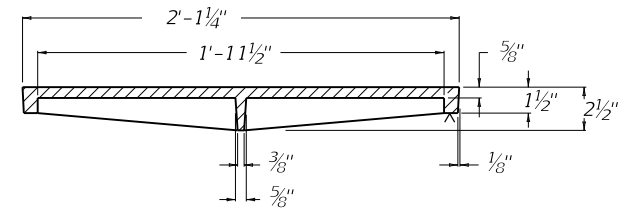
BID ITEM AND UNIT TO BID  
FRAME AND LID BY 1

EACH

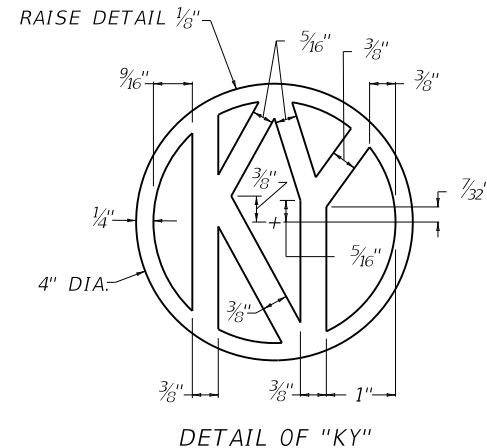
1. THE FRAME IS REVERSIBLE AND IS TO BE USED ON MANHOLES IN NON-VEHICULAR TRAFFIC AREAS, AND ON BOX INLETS AS SPECIFIED.
2. APPLICATIONS SHOWN ARE FOR ILLUSTRATION PURPOSES ONLY.
- ③ VARIATION IN LID LETTERING (SEE PIPE SUMMARY) DENOTES SEWER TYPES:
  - (A) STORM SEWER
  - (B) SANITARY SEWER
  - (C) SANITARY AND STORM SEWER
4. THE "KY" SYMBOL SHALL APPEAR ON ALL LIDS.



PLAN VIEW



SECTION A-A



APPROX. WEIGHT	
FRAME	90 LBS.
LID	116 LBS.

KENTUCKY  
DEPARTMENT OF HIGHWAYS

FRAME AND LID  
TYPE 1

STANDARD DRAWING NO. RDM-100-03

SUBMITTED	<i>[Signature]</i>	12-01-15
DIRECTOR	DESIGNER	DATE
APPROVED	<i>[Signature]</i>	12-01-15
	STATE HIGHWAY ENGINEER	DATE