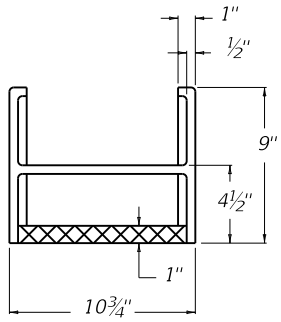
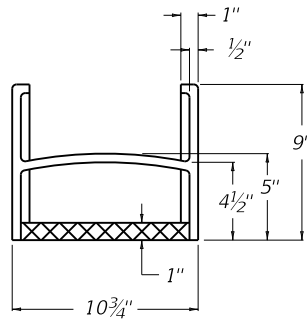


~ NOTES ~

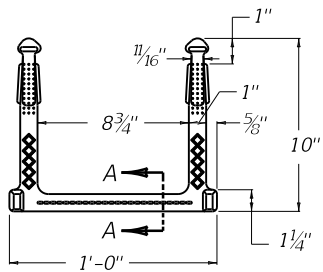
1. STEPS SHALL BE ASPHALT COATED CAST IRON OR POLYPROPYLENE PLASTIC COATED STEEL ROD OR OF A TYPE AND SIZE APPROVED BY THE ENGINEER.
2. STEPS SHALL BE SPACED APPROXIMATELY 12" TO 16" O.C. VERTICALLY SO AS TO FORM A CONTINUOUS LADDER.
3. STEPS SHALL BE REQUIRED IN MANHOLES WHEN THE STRUCTURE IS 4 FEET AND GREATER IN DEPTH. (MEASURE FROM FLOW LINE OF LOWEST PIPE TO TOP OF STRUCTURE).
4. THE TREADS OF ALL STEPS SHALL HAVE ANTI-SKID PROPERTIES FOR HAND AND FOOT GRIPS.
5. MANHOLE: USE STEP TYPE 1 OR TYPE 3 FOR MANHOLE PIPE CHAMBER AND STEP TYPE 2 OR TYPE 4 FOR MANHOLE TOWER.



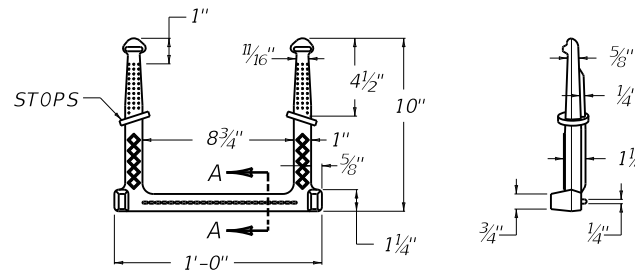
STEP TYPE NO. 1



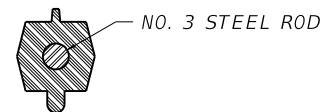
STEP TYPE NO. 2



STEP TYPE NO. 3



STEP TYPE NO. 4



SECTION A-A

USE WITH CUR. STD. DWGS.
RDM-001 RDM-005 RDM-010
RDM-050

KENTUCKY DEPARTMENT OF HIGHWAYS	
MANHOLE STEPS	
STANDARD DRAWING NO. RDM-055	
SUBMITTED <i>William P. Gabel</i>	12-01-15
<small>DIVISION OF DESIGN</small>	
APPROVED <i>[Signature]</i>	12-01-15
<small>STATE HIGHWAY ENGINEER</small>	