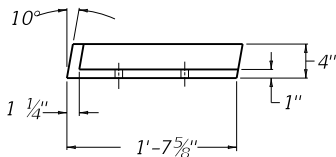
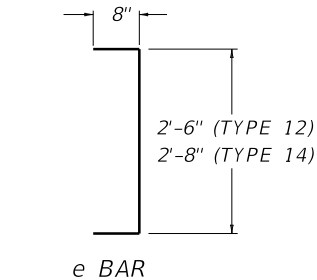
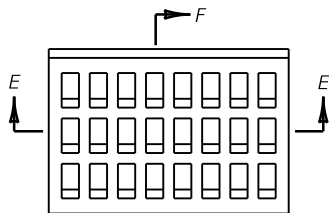


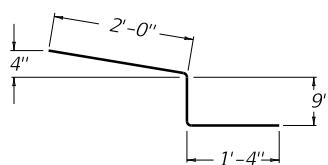
FRAME PLAN VIEW  
( LEFT HALF )



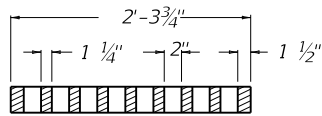
FRAME ELEVATION



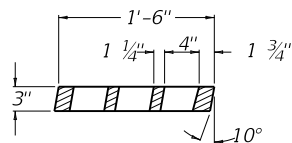
GRATE PLAN VIEW



m BAR



SECTION E-E



SECTION F-F

APPROX. QTYS. FOR 25' CONC. MEDIAN BARRIER

INLET	W	BAR a		BAR b		STEEL LBS. (8)	CONC. CU. YDS.
		QTY.	LENGTH	QTY.	LENGTH		
TYPE 12	12"	13	11'-6"	15	24'-8"	542	5.16
TYPE 14	14"	13	12'-0"	15	24'-8"	549	5.8

~ NOTES ~

BID ITEM AND UNIT TO BID  
CONC. MED BARR BOX INLET TY ☆ ⊗ ⊕ △ -50 EACH

☆ 12 OR 14 DEPENDING ON "W" WIDTH

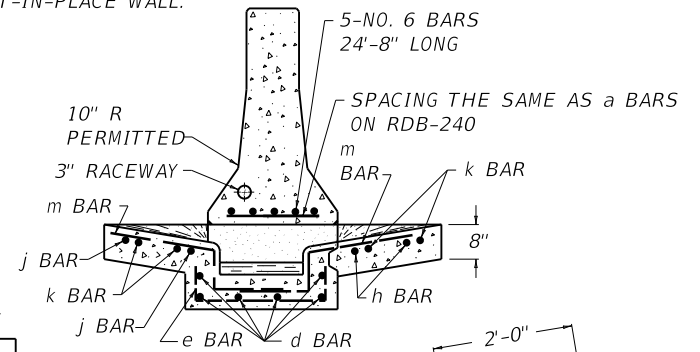
⊗ = "A" FOR SAG VERTICALS  
"B" FOR STRAIGHT GRADE

⊕ = 1 FOR OPENING ON ONE SIDE OF BOX INLET  
2 FOR OPENING ON BOTH SIDES OF BOX INLET

△ (b) = BOTTOM PHASE (t) = TOP PHASE

NO (b) OR (t) SUFFIX INDICATES COMPLETE INLET.

- ALL STEEL REINFORCEMENT BARS SHALL BE NO. 5 BARS.
- THE RATE OF INCREASE OF ADDITIONAL CLASS "A" CONCRETE PER FT. OF HEIGHT ABOVE THE MINIMUM 3'-10" SHALL BE 0.35 CU. YDS FOR A TYPE 12 AND 0.37 CU. YDS. FOR A TYPE 14 BOX INLET.
- PLACE ALL STEEL REINFORCEMENT 2" MINIMUM FROM OUTSIDE FACE OF WALL, EXCEPT AS OTHERWISE SHOWN.
- SEE CUR. STD. DWG. RDB-420 FOR STEEL REINFORCEMENT IN BOTTOM OF BOX WHEN H = 8'-0" TO 15'-0".
- USE CHAMBER DIMENSIONS TO BEST FIT AND EQUALLY SPACE REINFORCEMENT STEEL.
- A SYMMETRICAL WALL IS DETAILED, AN ASYMMETRICAL WALL MAY BE REQUIRED (SEE PLANS).
- 2'-6" FOR MIN. HEIGHT OF 3'-10"
- STEEL QUANTITIES ARE FOR CAST-IN-PLACE WALL.

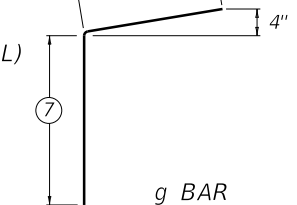


SECTION C-C  
(SLIP-FORM WALL)

APPROX. QUANTITIES  
FOR INLET

TYPE	CLASS "A" CONC.	
	CU. YDS.	STEEL LBS.
12A 1	3.96	158
12B 1	3.89	143
14A 1	4.09	159
14B 1	3.98	145

FOR APPROX. QUANTITIES FOR TYPE A2 OR B2 ( ALL "W" WIDTHS ) ADD 1.48 CU. YDS. CONCRETE AND 73 LBS. STEEL.



g BAR

USE WITH CUR. STD. DWGS.  
RDB-240 RDB-420

KENTUCKY  
DEPARTMENT OF HIGHWAYS

CONCRETE MEDIAN  
BARRIER BOX INLET  
(50" TALL WALL  
SLIP-FORM)

STANDARD DRAWING NO. RDB-241-02

SUBMITTED *[Signature]* DATE 12-01-15  
DESIGNED BY *[Signature]* DATE 12-01-15  
APPROVED *[Signature]* DATE 12-01-15  
STATE HIGHWAY ENGINEER