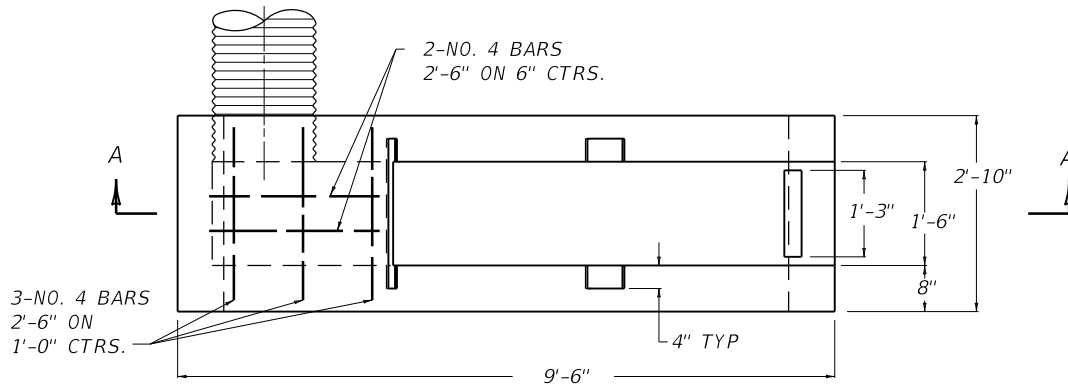


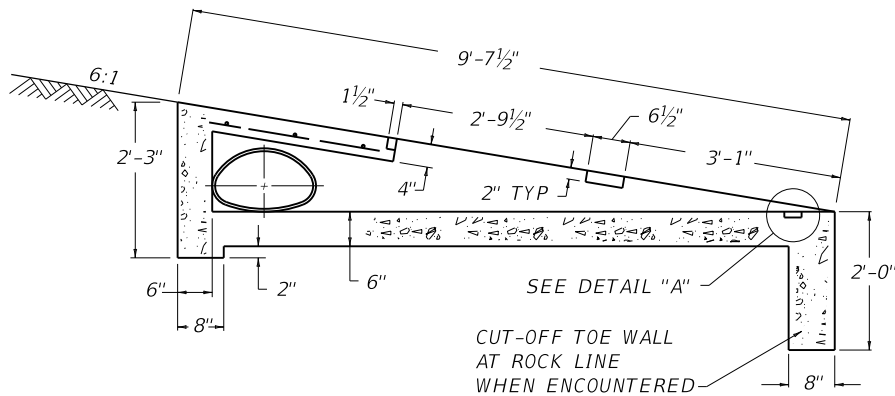
~ NOTES ~

BID ITEM AND UNIT TO BID  
SLOPED BOX INLET-OUTLET TYPE 2 EACH

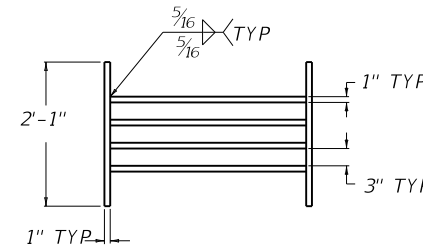
1. THE UNIT PRICE BID FOR EACH STRUCTURE SHALL INCLUDE ALL CONCRETE, STRUCTURAL STEEL GRATINGS, STEEL REINFORCEMENT, EXCAVATION, LABOR, AND ALL OTHER INCIDENTALS NECESSARY FOR ITS CONSTRUCTION AS DETAILED ON THIS SHEET.
2. PRIMARY USE 6:1 DEPRESSED MEDIAN LOCATION.
3. PIPE SHALL BE METAL PIPE ARCH (15" EQUIV. ROUND).



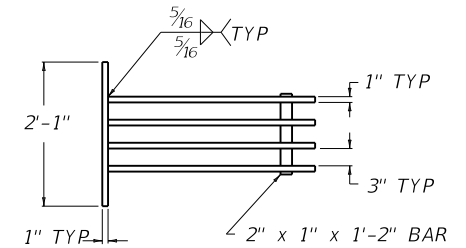
PLAN VIEW



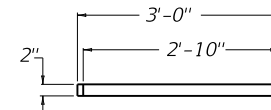
SECTION A-A



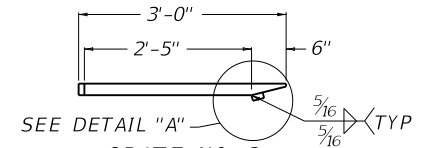
GRATE NO. 1  
PLAN VIEW



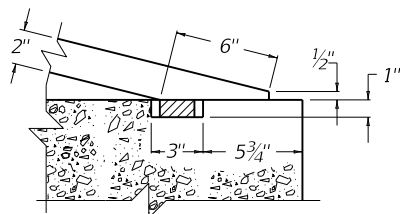
GRATE NO. 2  
PLAN VIEW



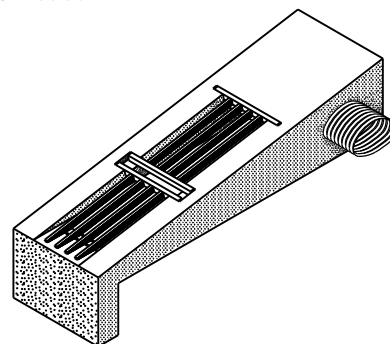
GRATE NO. 1  
SIDE ELEVATION



GRATE NO. 2  
SIDE ELEVATION



DETAIL "A"



ISOMETRIC VIEW

APPROXIMATE QUANTITIES					
CLASS "A" CONC.	GRATE	LBS. STRUCTURAL STEEL		STEEL REINF.	
		CU. YDS.	NUMBER	EACH GRATE	TOTAL LBS.
1.1	1		106	206	8
	2		100		

KENTUCKY  
DEPARTMENT OF HIGHWAYS

SLOPED BOX  
INLET OR OUTLET  
TYPE 2

STANDARD DRAWING NO. RDB-111-08

SUBMITTED *[Signature]* 12-01-15  
DATE

APPROVED *[Signature]* 12-01-15  
DATE

STATE HIGHWAY ENGINEER