

BID ITEM AND UNIT TO BID
 DROP BOX INLET TYPE 16 (Δ)(*)

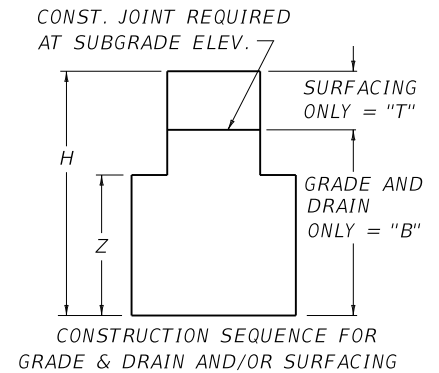
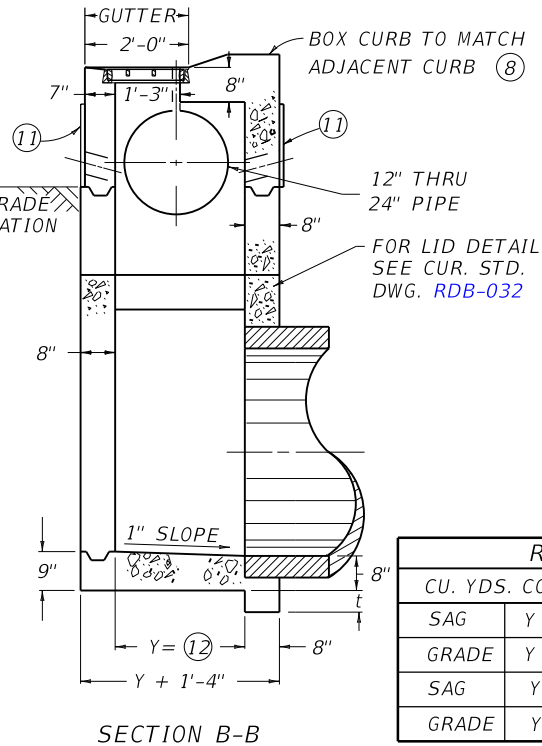
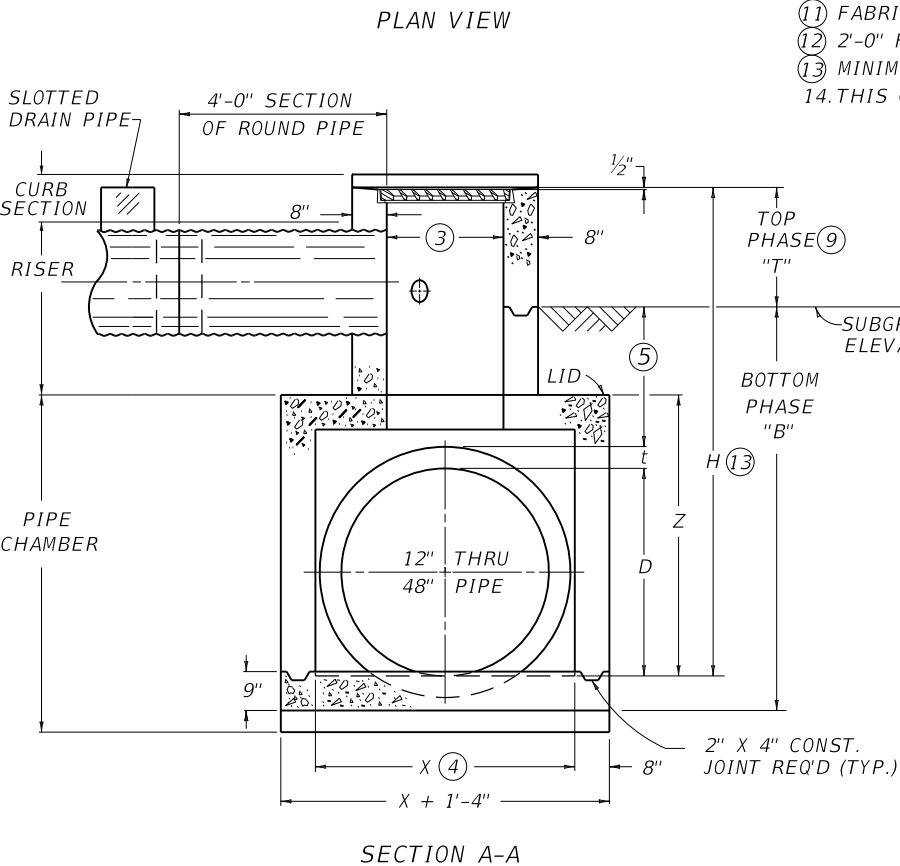
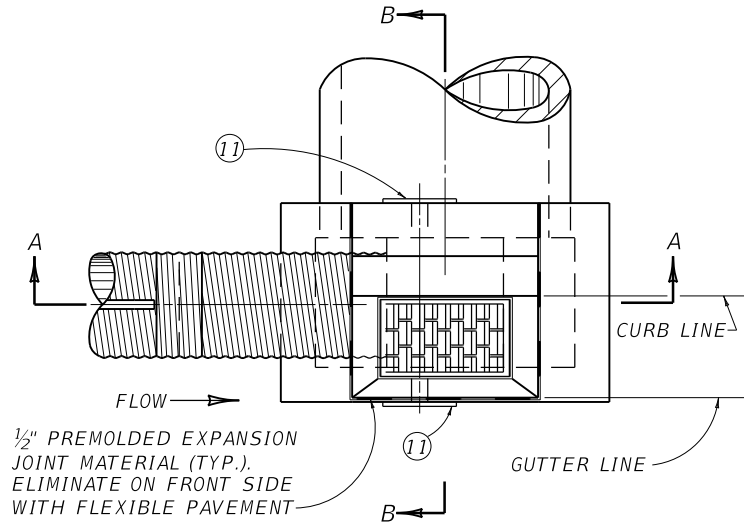
- (Δ) = "S" (SAG CONDITION)
- (Δ) = "G" (GRADE CONDITION)
- (*) = "T" (TOP PHASE)
- (*) = "B" (BOTTOM PHASE)

~ NOTES ~

EACH

WITH NO "T" OR "B" SUFFIX A COMPLETE INLET IS REQUIRED.

1. BOX INLET MAY BE CONSTRUCTED IN TWO PHASES (BOTTOM AND TOP) AND MAY BE CONSTRUCTED IN A SAG VERTICAL CURVE OR ON GRADE.
2. FOR ILLUSTRATION PURPOSES THIS DRAWING DEPICTS A BOX LOCATED ON A GRADE CONDITION. SEE CUR. STD. DWG. [RDB-014](#) FOR DETAILS OF SAG AND GRADE CONDITIONS.
- ③ DIMENSION VARIES DEPENDING UPON LOCATION OF BOX: GRADE CONDITION = 2'-3", SAG CONDITION = 4'-11".
- ④ GRADE CONDITION: X = 2'-3" MIN. TO 5'-0" MAX. , SAG CONDITION: X=4'-11".
- ⑤ 2'-0" DESIRED COVER, 1'-0" MIN. COVER OVER PIPE AND/OR LID.
6. "t" IS CONCRETE PIPE WALL THICKNESS OR METAL CORRUGATION DEPTH.
7. ALL WALLS AND SLABS ARE 8" THICK UNLESS OTHERWISE SHOWN.
- ⑧ THE CURB ON THE BOX SHALL BE CONSTRUCTED TO MATCH THE ADJOINING CURB WITH THE SAME CONSTRUCTION AND MATERIAL DETAILS (SEE CUR. STD. DWG. [RPM-100](#)). THIS DRAWING DEPICTS A LIP CURB APPLICATION.
- ⑨ THE TOP PHASE SHALL BE CAST AFTER THE ADJOINING CURB AND GUTTER HAVE BEEN CAST.
10. SEE CUR. STD. DWG. [RDB-014](#) FOR FRAME AND GRATE DETAIL. SEE CUR. STD. DWG. [RDB-031](#) FOR STEEL PATTERN. SEE CUR. STD. DWG. [RDB-033](#) FOR DIMENSIONS AND QUANTITIES.
- ⑪ FABRIC WRAPPED BACKFILL DRAIN, (ONE PER WEEP HOLE) .
- ⑫ 2'-0" FOR 12", 15", AND 18" OR 2'-6" FOR 24" SLOTTED DRAIN PIPE.
- ⑬ MINIMUM HEIGHT FOR LONGITUDINAL PIPE SHALL BE H = 11" + INSIDE DIAMETER OF PIPE.
14. THIS GRATE IS BICYCLE FRIENDLY.



USE WITH CUR. STD. DWGS.
[RDB-014](#) [RDB-031](#) [RDB-032](#)
[RDB-033](#) [RDB-034](#) [RDB-035](#)
[RDI-200](#)

RISER		
CU. YDS.	CONC.	PER FT. HT
SAG	Y = 2'-0"	0.4
GRADE	Y = 2'-0"	0.3
SAG	Y = 2'-6"	0.4
GRADE	Y = 2'-6"	0.3

KENTUCKY
 DEPARTMENT OF HIGHWAYS

DROP BOX INLET
 TYPE 16
 (DETAIL SHEET)

STANDARD DRAWING NO. [RDB-030-04](#)

SUBMITTED *[Signature]* DATE 12-01-15
 ORIGINAL DATE OF DESIGN

APPROVED *[Signature]* DATE 12-01-15
 STATE HIGHWAY ENGINEER