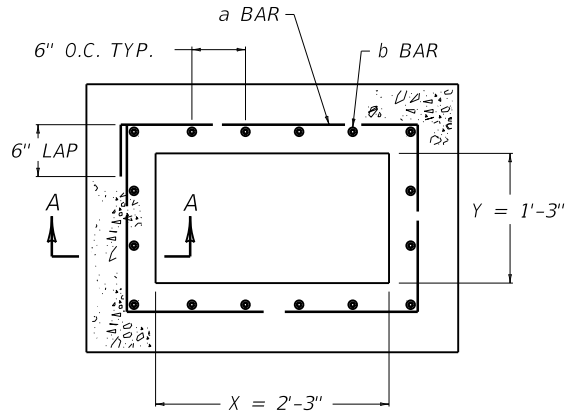
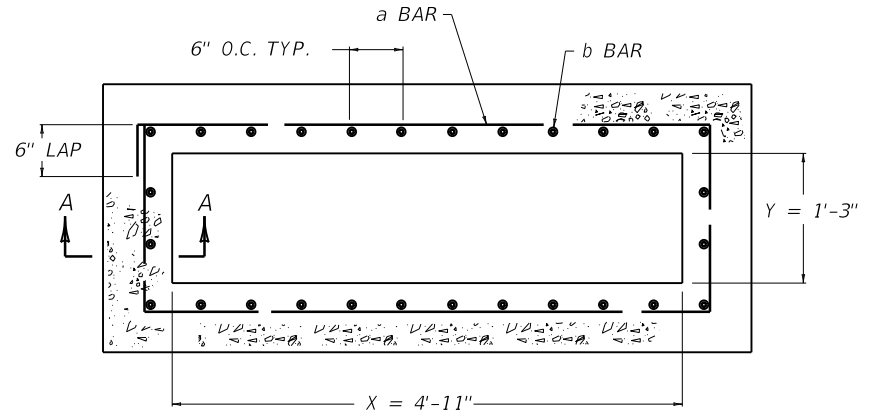


ADDITIONAL STEEL REINFORCEMENT REQUIREMENTS  
 ( RISER, H = 8'-0" TO 15'-0", GRADE AND SAG CONDITION )



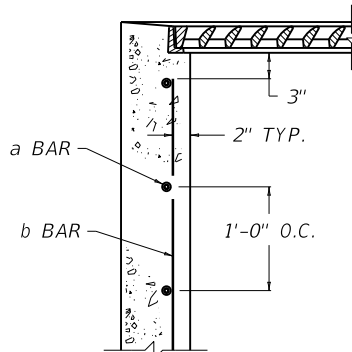
GRADE CONDITION



SAG CONDITION

~ NOTES ~

1. STEEL REINFORCEMENT SHALL HAVE A CLEAR DISTANCE OF 2" FROM THE FACE UNLESS OTHERWISE SHOWN.
2. ALL STEEL REINFORCEMENT SHALL BE NO. 5 BARS.



SECTION A-A

APPROXIMATE RISER QUANTITIES PER ONE FOOT IN HEIGHT							
COND- ITION	SIZE		BAR a		BAR b		LBS STEEL
	X	Y	QTY.	LIN. FT.	QTY.	LIN. FT.	
GRADE	2'-3"	1'-3"	3	9'-3"	16	1'-0"	26
SAG	4'-11"		3	14'-7"	28		44

USE WITH CUR. STD. DWGS.  
 RDB-013 RDB-014 RDB-015  
 RDB-016 RDB-017 RDB-019

KENTUCKY  
 DEPARTMENT OF HIGHWAYS

DROP BOX INLET  
 TYPE 13  
 (ADDITIONAL STEEL - RISER)

STANDARD DRAWING NO. RDB-018-04

SUBMITTED *[Signature]* DIRECTOR, DEPT. OF DESIGN 12-01-15  
 DATE  
 APPROVED *[Signature]* STATE HIGHWAY ENGINEER 12-01-15  
 DATE