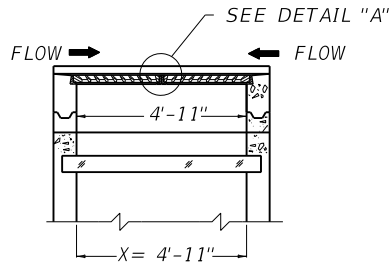


GRADE CONDITION  
( 1 GRATE & 1 FRAME REQ'D. )

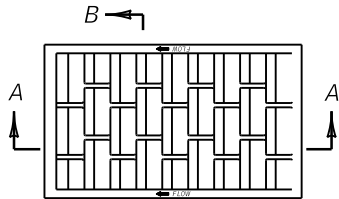


SAG CONDITION  
( 2 GRATES & 2 FRAMES REQ'D. )

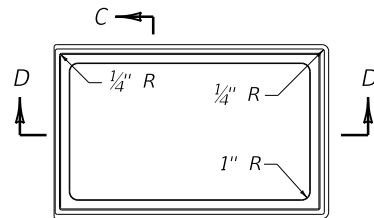
~ NOTES ~

1. ALL FILLETS AND ROUNDS SHALL BE  $\frac{1}{8}$ " r.
2. THE FRAME AND GRATE SHALL BE MANUFACTURED OF CAST GRAY IRON CONFORMING TO ASTM A-48 CLASS 35B.

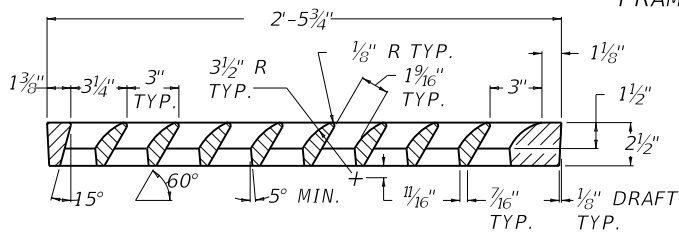
APPROX. WEIGHT	
1 GRATE	160 LBS.
1 FRAME	70 LBS.



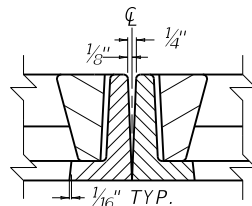
GRATE PLAN VIEW



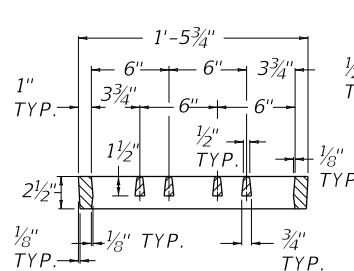
FRAME PLAN VIEW



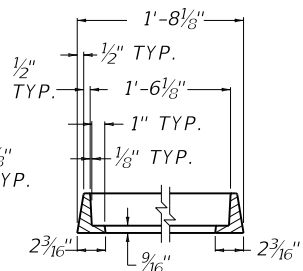
SECTION A-A



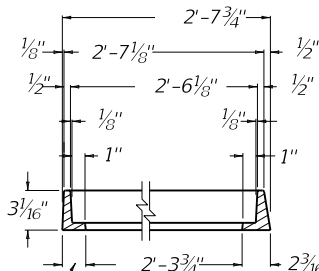
DETAIL "A"



SECTION B-B



SECTION C-C

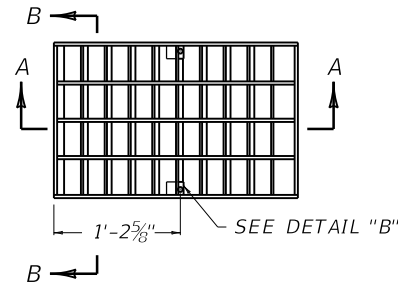


SECTION D-D

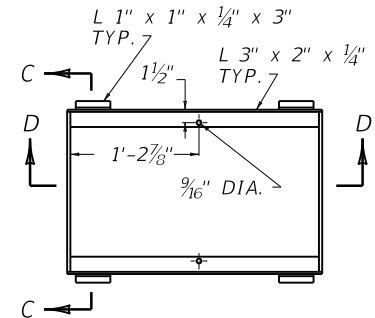
GRAY IRON CASTING

~ NOTES ~

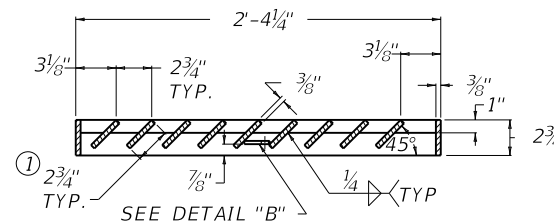
- ① THE  $2\frac{3}{4}$ " BAR SHALL BE NOTCHED TO RECEIVE THE 1" BAR.
2. THE FRAME AND GRATE SHALL BE ASSEMBLED WITH 2 (TWO)  $\frac{1}{2}$ " X  $2\frac{1}{4}$ " STAINLESS HEX HEAD BOLTS AND NUTS (COMMERCIAL QUALITY).
- ③ ALL STRUCTURAL STEEL SHALL CONFORM TO ASTM A-36.



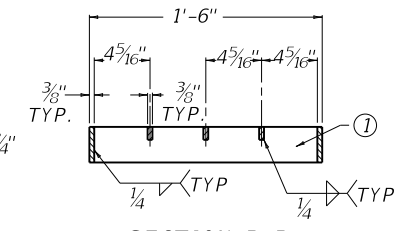
GRATE PLAN VIEW



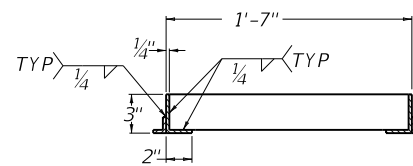
FRAME PLAN VIEW



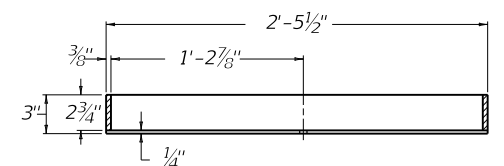
SECTION A-A



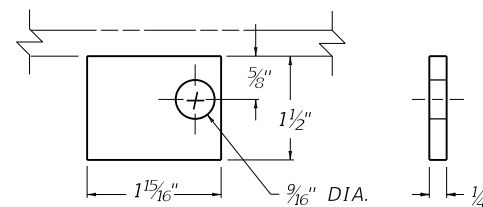
SECTION B-B



SECTION C-C



SECTION D-D



DETAIL "B"

③ STR. STEEL WTS.		
1 GRATE	TOTAL	1 FRAME
82 LBS.	126 LBS.	44 LBS.

STRUCTURAL STEEL

USE WITH CUR. STD. DWGS.  
RDB-013 RDB-015 RDB-016  
RDB-017 RDB-018 RDB-019  
RDB-030 RDB-031 RDB-032  
RDB-033 RDB-034 RDB-035

KENTUCKY  
DEPARTMENT OF HIGHWAYS

DROP BOX INLET  
TYPE 13 AND TYPE 16  
(FRAME AND GRATE  
DETAILS)

STANDARD DRAWING NO. RDB-014-06

SUBMITTED *[Signature]* 12-01-15  
DATE  
APPROVED *[Signature]* 12-01-15  
DATE  
STATE HIGHWAY ENGINEER