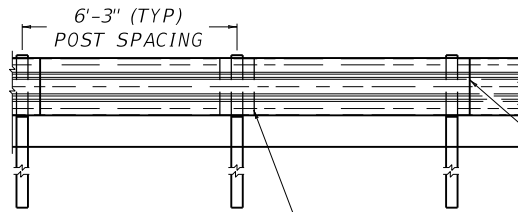
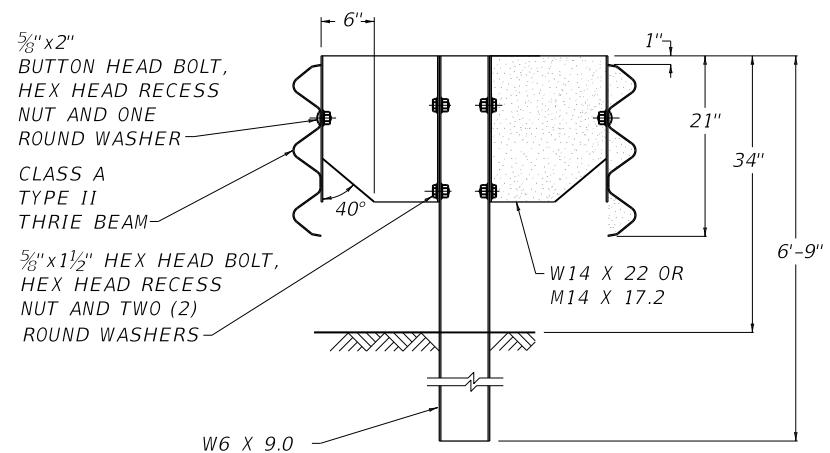


PLAN VIEW

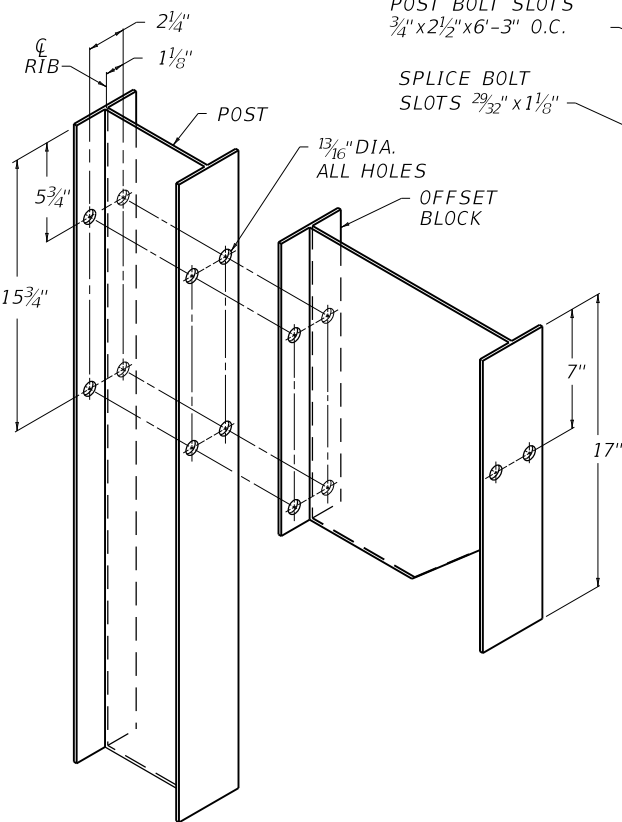


ELEVATION VIEW

ALL LAPS SHALL BE IN DIRECTION OF TRAFFIC FLOW
BACK-UP PLATE (LOCATE AT INTERMEDIATE POSTS WHERE SPLICES DO NOT OCCUR)



NEW CONSTRUCTION

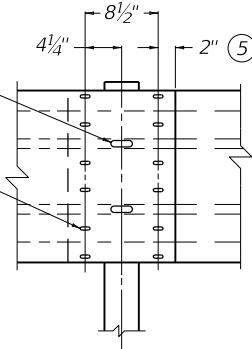


POST & OFFSET BLOCK DETAIL

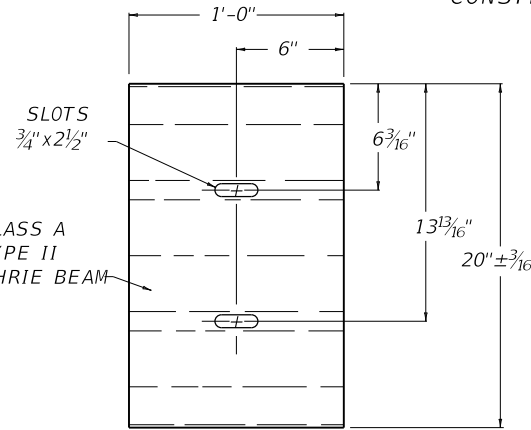
POST BOLT SLOTS $\frac{3}{4}'' \times 2\frac{1}{2}'' \times 6'-3''$ O.C.

SPLICE BOLT SLOTS $\frac{29}{32}'' \times 1\frac{1}{8}''$

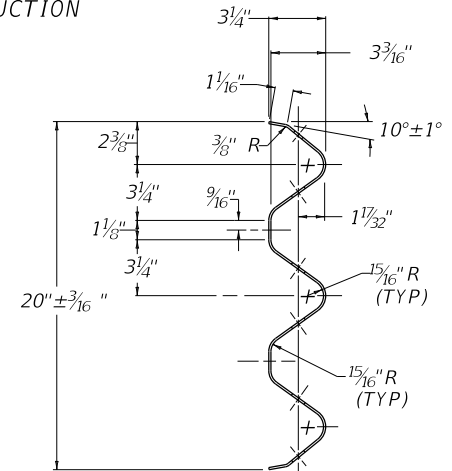
$\frac{13}{16}''$ DIA. ALL HOLES
OFFSET BLOCK



④ RAIL SPLICE



BACK-UP PLATE



SECTION OF RAIL ELEMENT & BACK-UP PLATE

~ NOTES ~

BID ITEM AND UNIT TO BID
GUARDRAIL THRIE BEAM

LF

1. DIMENSIONAL TOLERANCES NOT SHOWN OR IMPLIED ARE INTENDED TO BE THOSE CONSISTENT WITH THE PROPER FUNCTIONING OF THE PART, INCLUDING ITS APPEARANCE AND ACCEPTED MANUFACTURING PRACTICES.
2. THE SAME TYPE OF RAIL ELEMENT, POST, FASTENINGS AND ACCESSORIES SHALL BE USED THROUGHOUT THE WORK.
3. CONNECT OFFSET BLOCK TO STEEL POST WITH TWO DIAGONALLY LOCATED BLOTS.
- ④ $12\frac{5}{8}'' \times 1\frac{1}{4}''$ BUTTON HEAD BOLTS AND HEX HEAD RECESS NUTS.
- ⑤ TOLERANCE $+ 1\frac{1}{4}'', -\frac{3}{16}''$
6. AASHTO M-180 SHALL APPLY EXCEPT WHERE IN CONFLICT WITH THIS DRAWING.

REQUIRED FOR DOUBLE RAIL NOT REQUIRED FOR SINGLE RAIL.

USE WITH CUR. STD. DWG.
RBR-005

KENTUCKY
DEPARTMENT OF HIGHWAYS

STEEL BEAM
GUARDRAIL
(THRIE BEAM)

STANDARD DRAWING NO. RBR-100-07

SUBMITTED	<i>[Signature]</i>	12-01-15
DIRECTOR OF DESIGN		DATE
APPROVED	<i>[Signature]</i>	12-01-15
STATE HIGHWAY ENGINEER		DATE