

~ NOTES ~

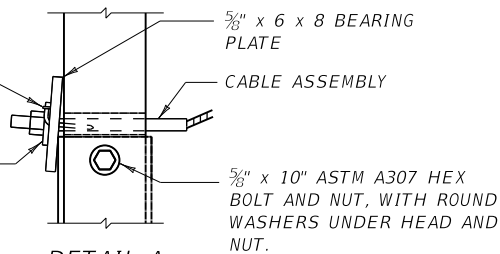
BID ITEM AND UNIT TO BID  
 GUARDRAIL END TREATMENT TYPE 2A EACH

1. GUARDRAIL END TREATMENT TYPE 2A SHALL BE TO THE PAY LIMITS AS DETAILED. THE CONTRACT UNIT BID IS EACH AND SHALL INCLUDE A TERMINAL SECTION NO. 1, RAIL ANCHOR ASSEMBLY, CABLE ANCHOR ASSEMBLY, SOIL TUBE, SOIL PLATE AND ALL OTHER INCIDENTALS NECESSARY FOR A COMPLETE INSTALLATION AS DETAILED.
2. IN THE EVENT SOLID ROCK IS ENCOUNTERED, THE SOIL TUBE MAY BE SHORTENED, PROVIDED IT EXTENDS INTO THE SOLID GROUND A MINIMUM OF 3 FEET.

③ INSTALL BEARING PLATE SO THAT THE "V" OPENING IS AT THE TOP.

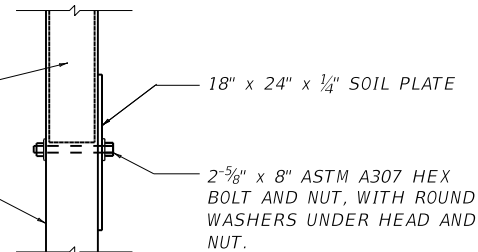
2-16d NAILS TO PREVENT PLATE ROTATION (THRU 5/16" DIA. HOLES IN PLATE AND BENT)

3/8" x 3" x 4" PLATE WASHER



DETAIL A

46" CRT POST  
 5" STEEL SOIL TUBE



DETAIL B

USE WITH CUR. STD. DWGS.  
 RBI-002 RBI-003 RBR-010  
 RBI-001

KENTUCKY  
 DEPARTMENT OF HIGHWAYS

GUARDRAIL  
 END TREATMENT  
 TYPE 2A

STANDARD DRAWING NO. RBR-025-06

SUBMITTED *[Signature]* DATE 02-26-20

APPROVED *[Signature]* ENGINEER DATE 02-26-20