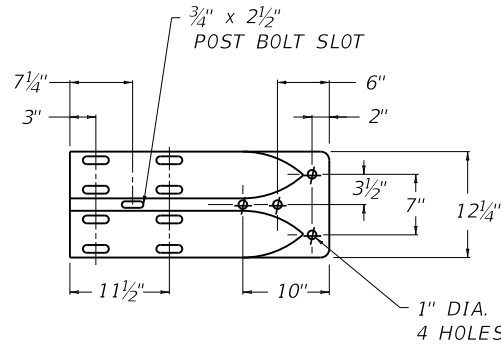
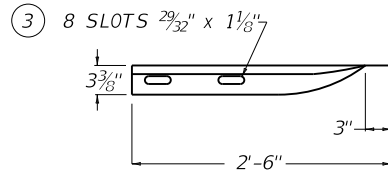
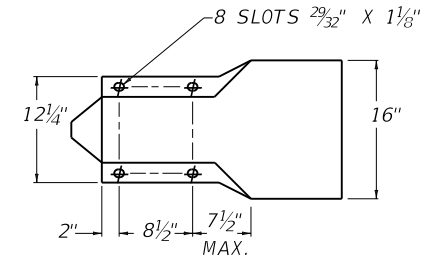
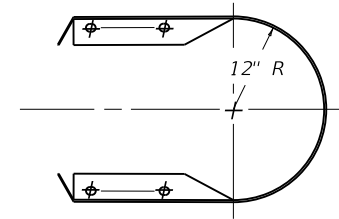


TERMINAL SECTION NO. 1



TERMINAL SECTION NO. 2



TERMINAL SECT. NO. 3

~ NOTES ~

BID ITEM AND UNIT TO BID

GUARDRAIL TERMINAL SECTION NO 1	EACH
GUARDRAIL TERMINAL SECTION NO 2	EACH
GUARDRAIL TERMINAL SECTION NO 3	EACH

1. TERMINAL SECTIONS SHALL BE PAID FOR AT THE CONTRACT UNIT PRICE BID EACH COMPLETE AND INSTALLED, EXCEPT WHEN INCIDENTAL TO OTHER BID ITEMS.
2. TERMINAL SECTIONS SHALL COMPLY WITH AASHTO M-180 AS FOLLOWS:
  - A. TERMINAL SECTIONS NO. 1, 3, -CLASS A OR B, TYPE 2
  - B. TERMINAL SECTION NO. 2-CLASS B, TYPE 2
- ③ WHEN SLOTTED HOLES ARE EXPOSED (8) EIGHT RECTANGULAR FLAT WASHERS SHALL BE REQUIRED - 2" SPLICE BOLTS ARE TO BE USED IF NEEDED.
4. TERMINAL SECTIONS ARE INTENDED FOR USE WITH OTHER GUARDRAIL COMPONENTS AND SYSTEMS.

KENTUCKY  
DEPARTMENT OF HIGHWAYS

GUARDRAIL  
TERMINAL SECTIONS

STANDARD DRAWING NO. RBR-010-06

SUBMITTED	<i>William P. Gabel</i>	12-01-15
	DIRECTOR, DEPT. OF DESIGN	DATE
APPROVED	<i>[Signature]</i>	12-01-15
	STATE HIGHWAY ENGINEER	DATE