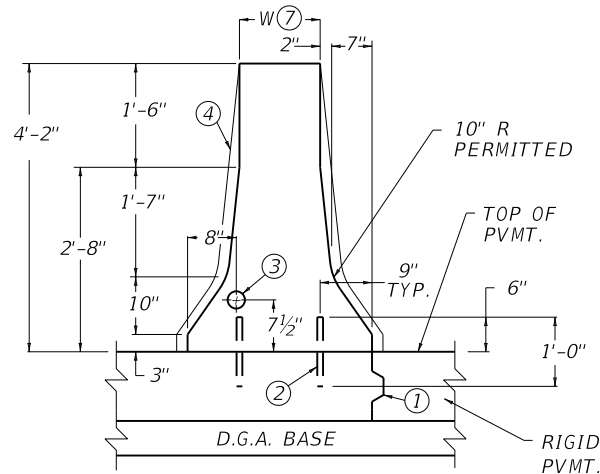
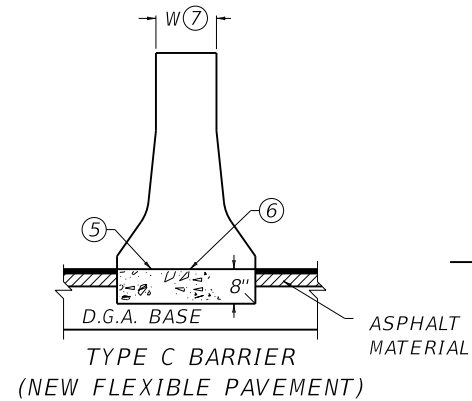


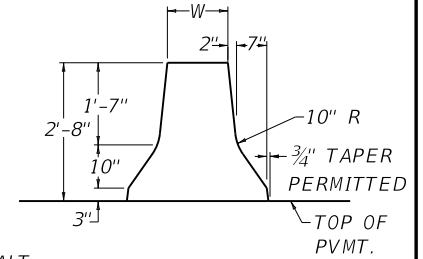
TYPE A BARRIER
(NEW RIGID PAVEMENT)



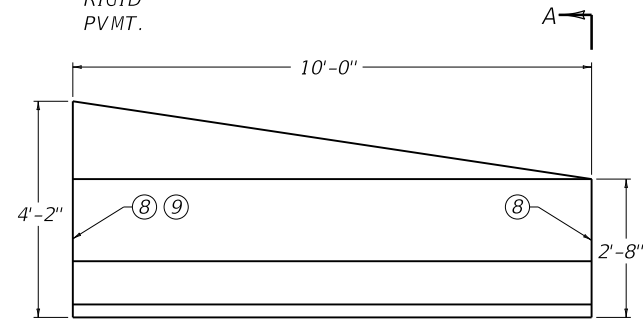
TYPE B BARRIER
(NEW RIGID PAVEMENT)



TYPE C BARRIER
(NEW FLEXIBLE PAVEMENT)



SECTION A-A



WALL TRANSITION
(ELEVATION VIEW)

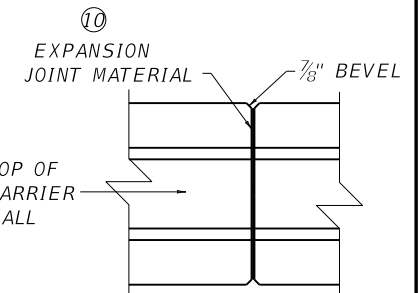
~ NOTES ~

THE CONTRACT UNIT PRICE PER LINEAR FOOT FOR "CONCRETE MEDIAN BARRIER TYPE $\star \oplus$ 50" SHALL BE FULL COMPENSATION FOR ALL MATERIALS, EQUIPMENT, LABOR AND INCIDENTALS NECESSARY TO COMPLETE THE WORK.

\star 12 OR 14 DEPENDING ON "W".

\oplus A, B OR C DEPENDING ON PAVEMENT TYPE.

- ① LONGITUDINAL CONSTRUCTION JOINT WITHOUT TIE BARS IS REQUIRED AND SHALL BE PLACED AT THE LOCATION SHOWN OR MAY BE INSTALLED AT THE CORRESPONDING POINT ON THE OPPOSITE SIDE OF THE BARRIER, AT THE OPTION OF THE CONTRACTOR. IT SHALL BE REQUIRED ON THE LOW SIDE OF A SUPERELEVATED SECTION.
- ② NO. 8 DOWEL BARS SPACED 4'-0" O.C. AND STAGGERED 2'-0".
- ③ 3" RACEWAY (TYPICAL). SEE ELSEWHERE IN THE PLANS FOR LOCATION AND PAYMENT FOR RACEWAY WHEN REQUIRED.
- ④ WALL MAY BE FIXED-FORMED AS DEPICTED BY PHANTOM LINES.
- ⑤ WHEN A CONSTRUCTION JOINT IS USED, DOWEL BARS WILL BE REQUIRED AS SHOWN WITH TYPE B BARRIERS.
- ⑥ CONSTRUCTION JOINT PERMITTED WHEN FIXED FORMS OR SLIP FORMS ARE USED.
- ⑦ A 14" WALL WITH 3" RACEWAY IS REQUIRED WHEN THE ROADWAY WILL BE LIGHTED FROM THE MEDIAN.
- ⑧ THE WALL TRANSITION DETAILED IS FOR A FIXED-FORM OR SLIP-FORM WALL. SEE CURRENT STANDARD DRAWING RBM-053 FOR CONNECTION DETAILS, STEEL PLACEMENT, LIFTING HOLE DIMENSIONS, ETC. WHEN WALL IS PRECAST.
- ⑨ SEE TYPE B BARRIER DETAIL FOR WALL DIMENSIONS.
- ⑩ TRANSVERSE EXPANSION JOINTS SHALL BE INSTALLED PER STANDARD SPECIFICATIONS FOR ROAD AND BRIDGE CONSTRUCTION.



EXPANSION JOINT DETAIL

APPROX. QUANTITIES PER LINEAR FOOT

TYPE	12" WALL		14" WALL	
	CONC. IN CU. YDS.	STEEL IN POUNDS	CONC. IN CU. YDS.	STEEL IN POUNDS
A	0.27	Δ 1.34	0.30	Δ 1.34
B	0.21	1.34	0.23	1.34
C	0.27	Δ 1.34	0.30	Δ 1.34

Δ WHEN REQUIRED

CONCRETE QUANTITIES SHOWN INCLUDE 8" BASE THICKNESS FOR TYPE A AND TYPE C. THE CONTRACTOR IS RESPONSIBLE FOR ADDITIONAL CONCRETE QUANTITIES.

USE WITH CUR. STD. DWG.
RBM-053

KENTUCKY
DEPARTMENT OF HIGHWAYS

CONCRETE MEDIAN BARRIER
FIXED-FORM OR SLIP-FORM
(PERMANENT)
(50" TALL WALL)

STANDARD DRAWING NO. RBM-050-02

SUBMITTED: *[Signature]* DATE: 02-26-20

APPROVED: *[Signature]* DATE: 02-26-20

ENGINEER