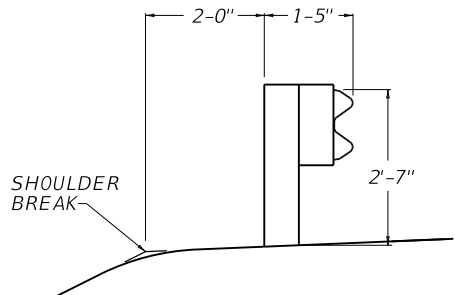


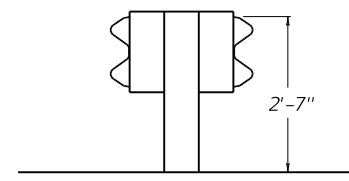
APPROACH ROADS

~ NOTES ~

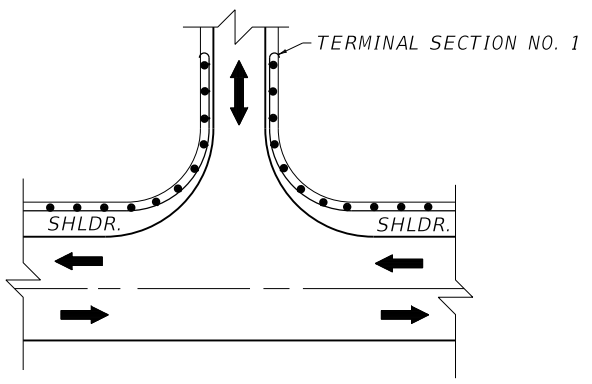
1. FOR END TREATMENT TYPE 4A USE CUR. STD. DWG. [RBR-035](#) FOR OFFSETS.
2. THE MINIMUM LENGTH OF GUARDRAIL, INCLUDING THE END TREATMENT, PRECEDING A FIXED OBJECT IS 200 FEET: (LENGTH MAY BE REDUCED SHOULD FIELD CONDITIONS WARRANT).



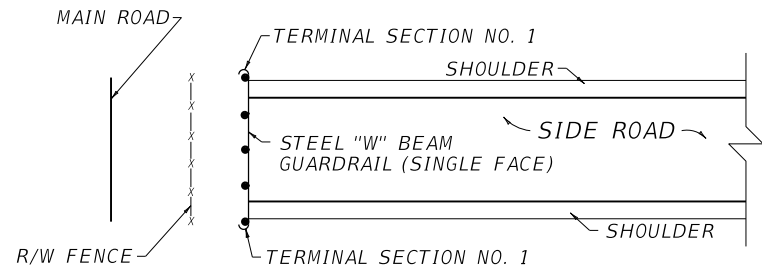
NORMAL GUARDRAIL INSTALLATION



TYPICAL DOUBLE FACE GUARDRAIL INSTALLATION



ENTRANCES



GUARDRAIL USED AS A BARRICADE

USE WITH CUR. STD. DWG.
[RBI-002](#) [RBR-035](#)

KENTUCKY
DEPARTMENT OF HIGHWAYS

TYPICAL GUARDRAIL
INSTALLATIONS

STANDARD DRAWING NO. RBI-001-12	
SUBMITTED 	DATE 02-26-20
APPROVED 	DATE 02-26-20