






CLASS	SPEED (MPH)	ATTENUATOR				SUGGESTED ADT* RANGE (P.C.P.L.) **	
		MODEL	PRODUCT NAME	MANUFACTURER	WIDTH		LENGTH
B	45 & LESS	TL2	SCI 70 GM IMPACT ATTENUATOR SMART CUSHION	HILL AND SMITH OF COLUMBUS, OHIO	24"	13'-6"	UP TO 12,000
			3-BAY QUADGUARD M10	VALTIR OF DALLAS, TEXAS	24"	13'-0"	
B	OVER 45	TL3	SCI 100 GM SMART CUSHION	HILL AND SMITH OF COLUMBUS, OHIO	24"	21'-6"	UP TO 12,000
			6-BAY QUADGUARD M10	VALTIR OF DALLAS, TEXAS	24"	22'-0"	
C	OVER 45	TL3	SCI 100 GM SMART CUSHION	HILL AND SMITH OF COLUMBUS, OHIO	24"	21'-6"	≥8,000
			QUADGUARD ELITE M10	VALTIR OF DALLAS, TEXAS	24"	27'-2"	
D	OVER 45	TL3	REACT M	VALTIR OF DALLAS, TEXAS	38 3/4"	22'- 2 3/4"	≥15,000

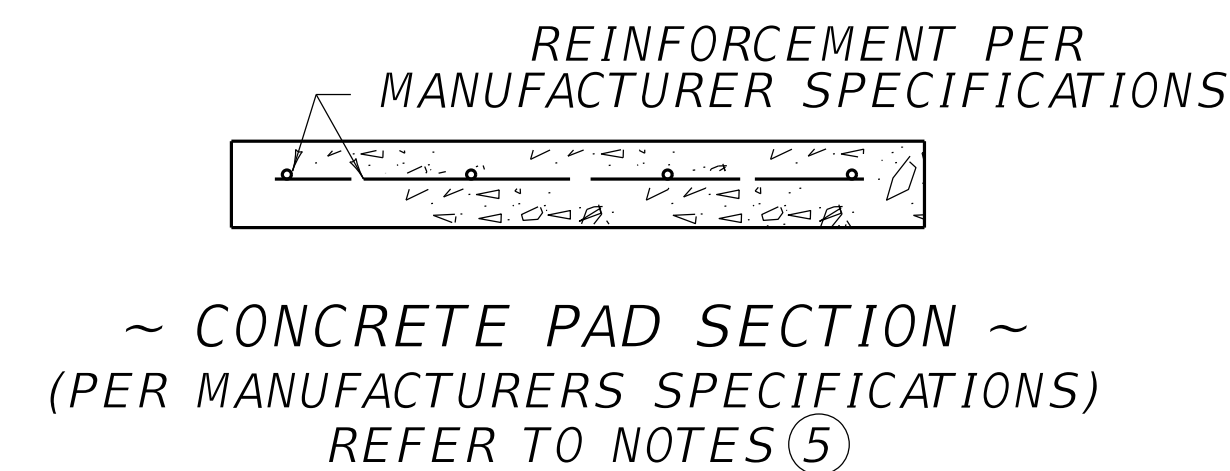
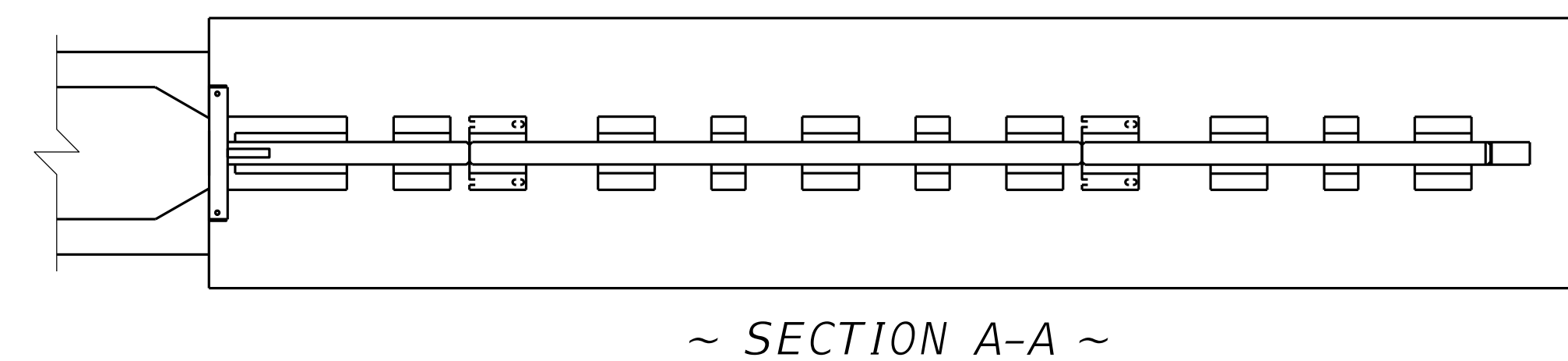
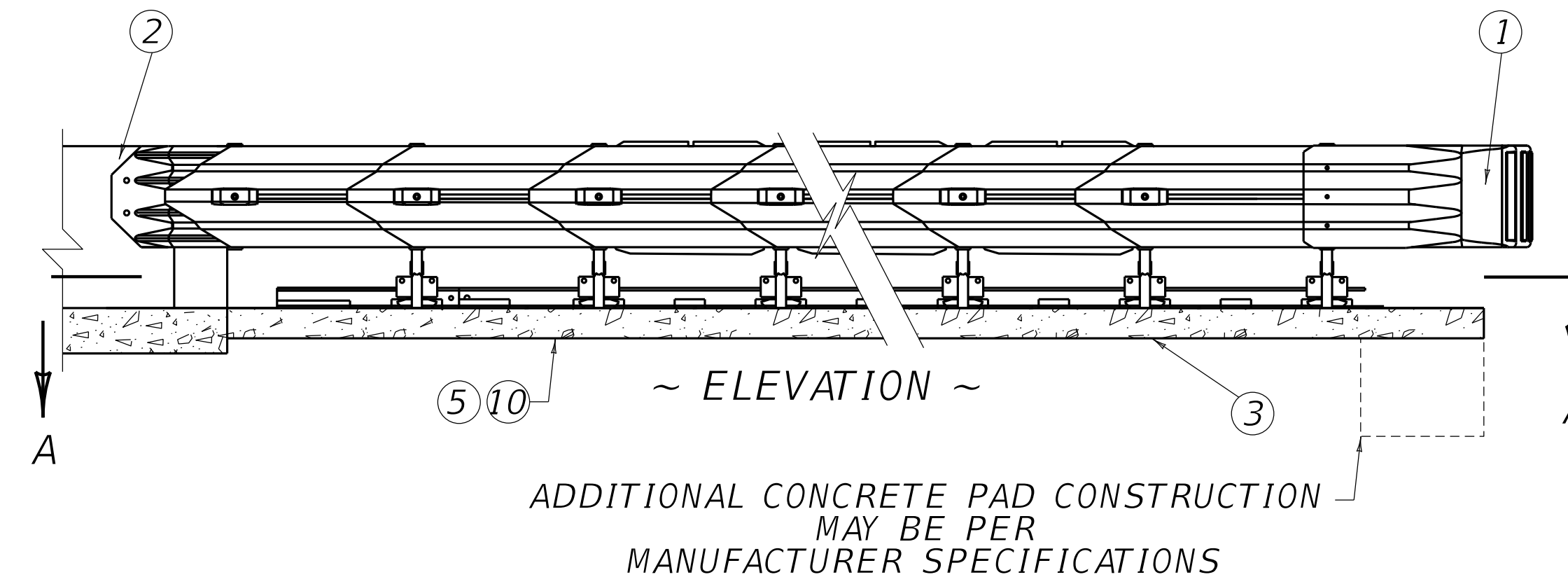
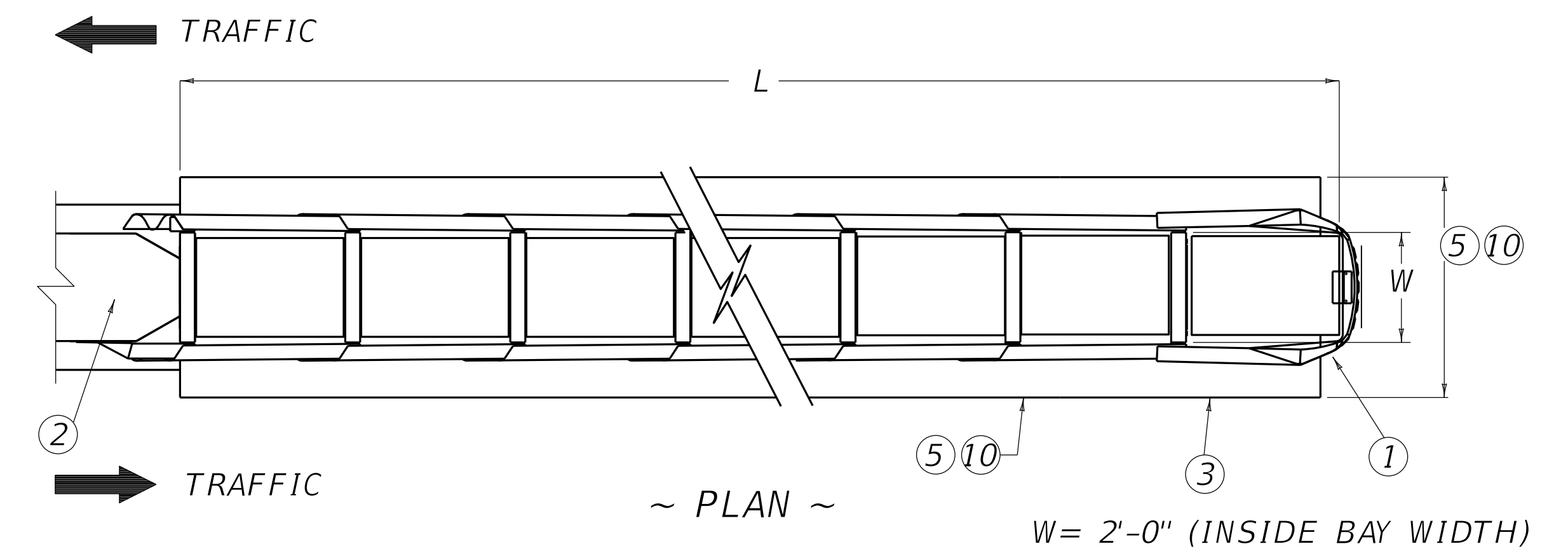
\*AVERAGE DAILY TRAFFIC \*\*PASSENGER CARS PER LANE

~ NOTES ~

- ① NOSE ASSEMBLY (OBJECT MARKER TYPE 1 AS REQUIRED).
- ② CONSTRUCTION ZONE BACKUP.
- ③ 6" CONCRETE PAD PER MANUFACTURER SPECIFICATIONS.
4. THE CONTRACT UNIT PRICE SHALL BE CRASH CUSHION TYPE VI CLASS , ,  CLASS B, C OR D, AS REQUIRED.  
 EITHER TEST LEVEL 2 (TL2) OR TEST LEVEL 3 (TL3), AS REQUIRED.  
 SEE "CONNECTION DETAILS OF CRASH CUSHION TYPE VI TO DOUBLE FACE GUARDRAIL", RBC-110.
- ⑤ THE CONCRETE PAD, PAD EXCAVATION AND STEEL REINFORCEMENT, INSTALLED IN PLACE SHALL BE INCLUDED IN THE UNIT PRICE BID FOR CRASH CUSHION TYPE VI. DIMENSION AND REINFORCEMENT SPECIFICATIONS FOR CONCRETE PADS ARE TO BE PROVIDED BY THE MANUFACTURER. THE PAD WILL NOT BE REQUIRED WHEN THE UNIT IS CONSTRUCTED ON RIGID PAVEMENT.
6. CRASH CUSHION TYPE VI MAY BE USED AT THE END OF: CONCRETE MEDIAN BARRIER, BRIDGE PIERS, AND STEEL "W" BEAM GUARDRAIL (DOUBLE FACE).
7. WHEN CRASH CUSHION TYPE VI CONNECTS TO: CONCRETE MEDIAN BARRIER OR BRIDGE PIER THE CONTRACT UNIT PRICE SHALL INCLUDE: CRASH CUSHION TYPE VI, ALL HARDWARE, ADDITIONAL RAIL ELEMENTS, POST, CONCRETE PAD AND ALL OTHER INCIDENTALS NECESSARY TO COMPLETE THE INSTALLATION.
8. THIS DRAWING DEPICTS A CONNECTION OF CRASH CUSHION TYPE VI TO CONCRETE MEDIAN BARRIER END. FOR THIS APPLICATION SEE CURRENT STD. DWG. RBE-065, "CONCRETE MEDIAN BARRIER END".
9. WHEN CRASH CUSHION TYPE VI CONNECTS TO DOUBLE FACE GUARDRAIL SEE CURRENT STANDARD DRAWING "CONNECTION DETAILS OF CRASH CUSHION TYPE VI TO DOUBLE FACE GUARDRAIL".
- ⑩ CRASH CUSHIONS ARE TO BE INSTALLED PER MANUFACTURER SPECIFICATIONS, INCLUDING THE CONCRETE PAD.  
THE MANUFACTURER SHALL FURNISH TWO (2) SETS OF SHOP PLANS TO THE CONTRACTOR WITH EACH INSTALLATION.
11. THE CRASH CUSHION TYPE VI MAY ALSO BE UTILIZED FOR TEMPORARY USE AND CONSTRUCTION ZONES (CLASS BT).
12. BOTH CRASH CUSHION TYPE VI CLASS C AND CLASS D ARE CONSIDERED A SEVERE USE CRASH CUSHION.
13. CLASS D CRASH CUSHIONS ARE TO BE PLACED IN AREAS OF HIGH CRASH RATES WHERE MAINTENANCE WILL BE DIFFICULT.

ADDITIONAL BID ITEMS AND UNIT TO BID:  
OBJECT MARKER TYPE 1 (AS REQUIRED) EACH

EACH



USE WITH CUR. STD. DWG.  
RBE-065 RBC-110

SUBMITTED  DIVISION DIRECTOR 09-24-2024 DATE



COMMONWEALTH OF KENTUCKY  
DEPARTMENT OF HIGHWAYS

DRAWING TITLE: SEPIA 036 - CRASH CUSHION TYPE VI (ONE AND TWO DIRECTION)

ITEM NO. COUNTY OF

SHEET NO.