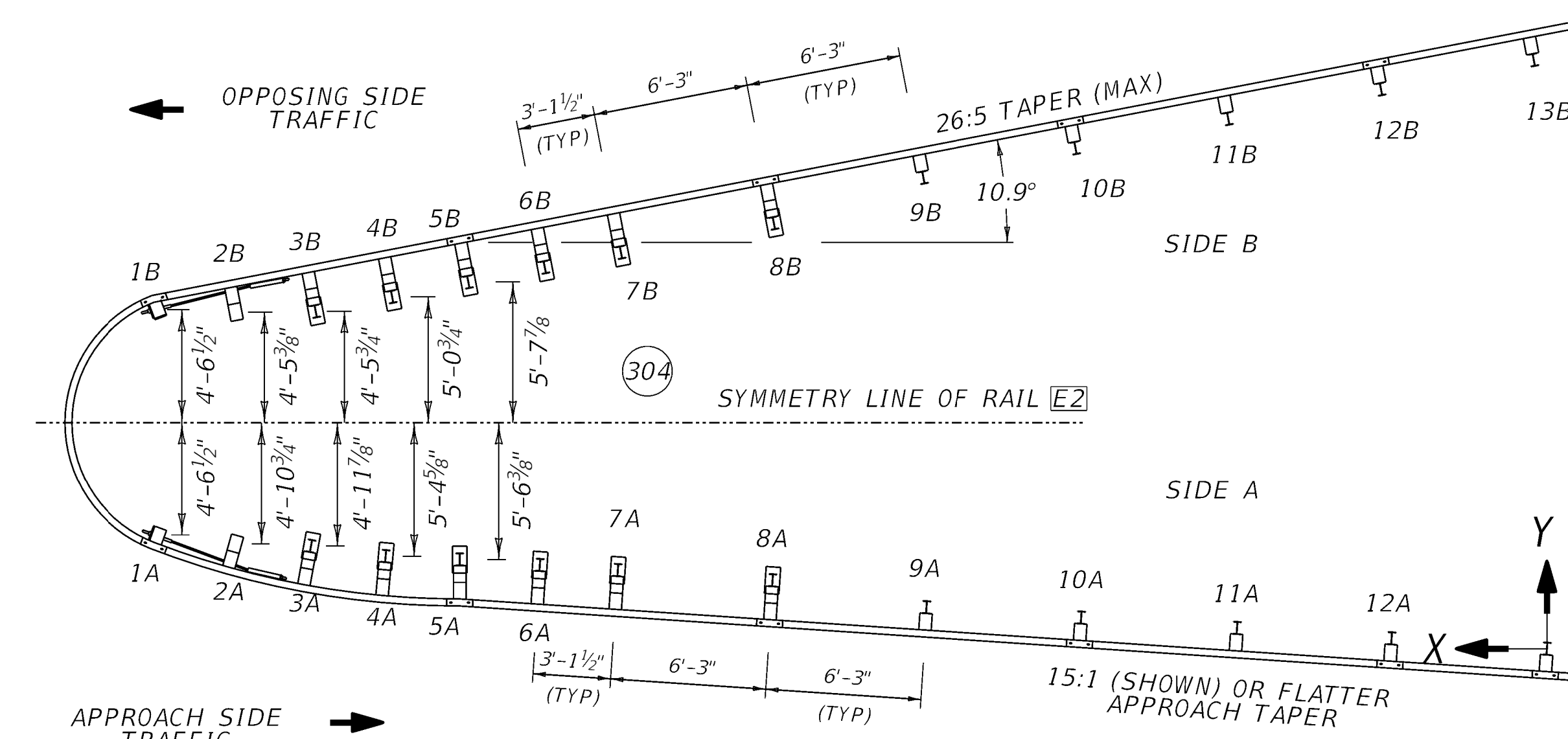
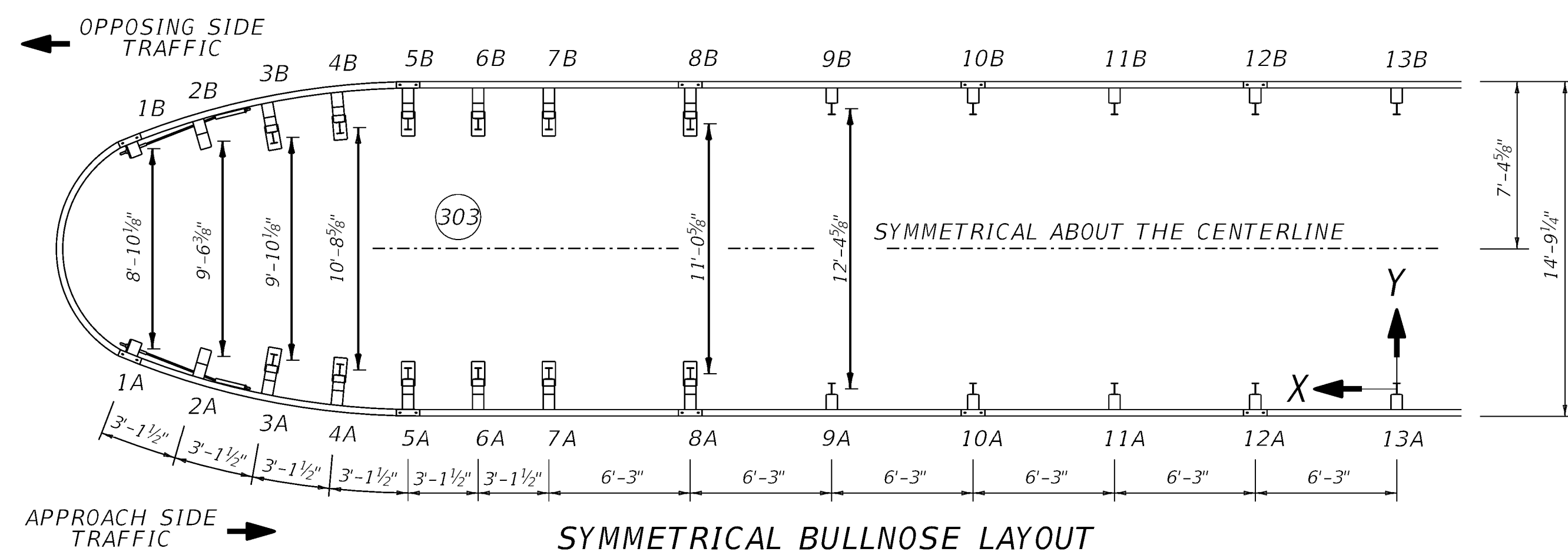


BULLNOSE TERMINAL INSTALLATION LAYOUT

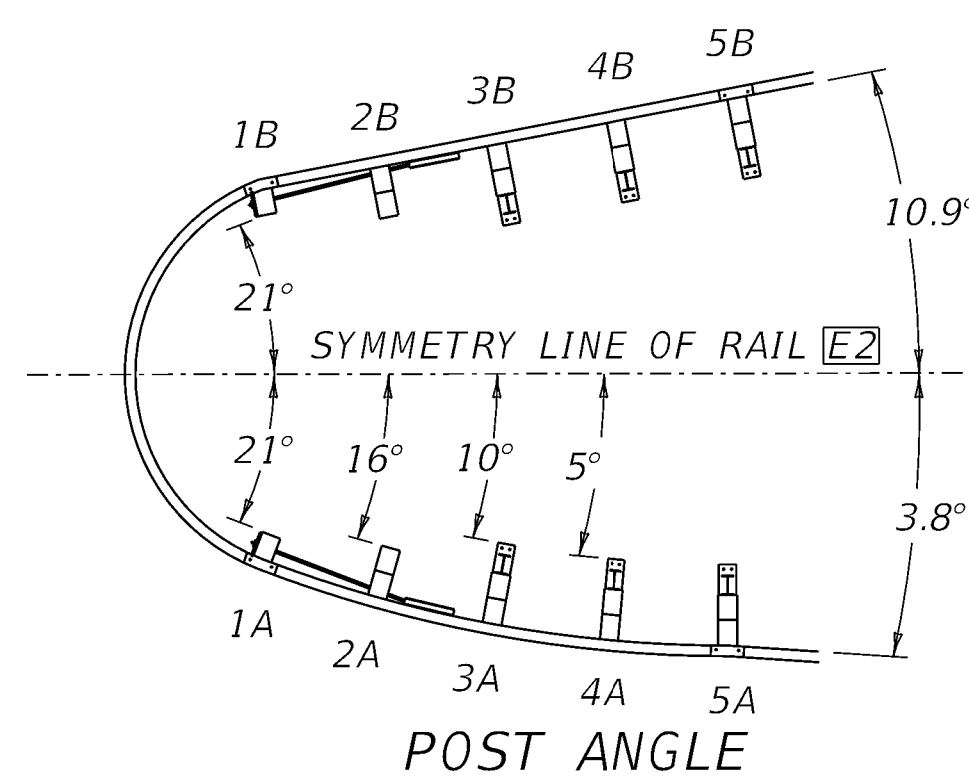
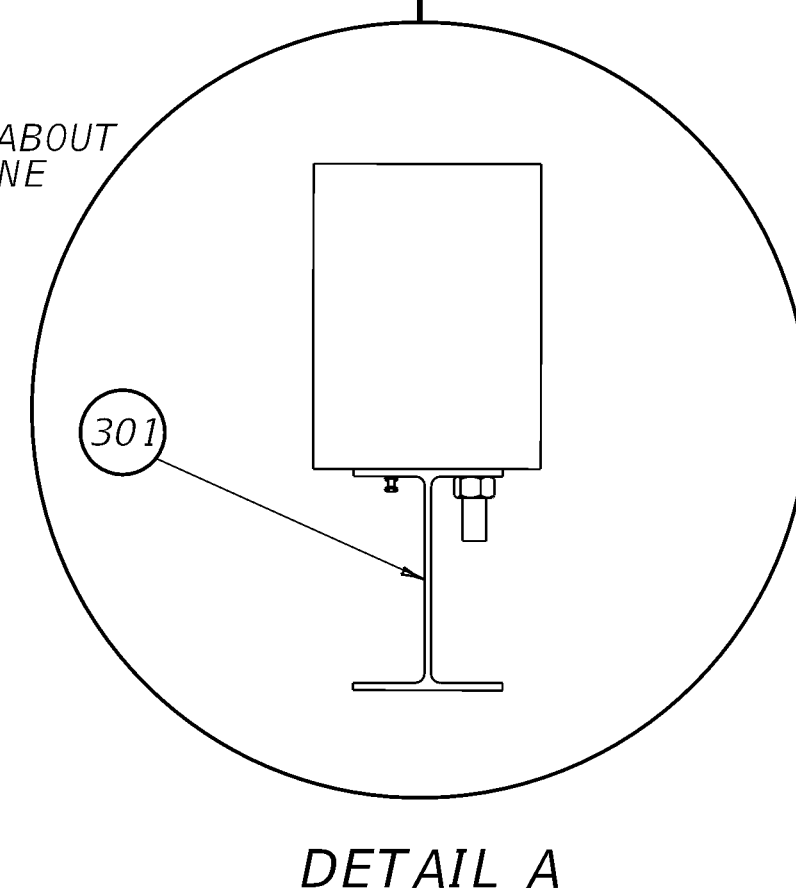
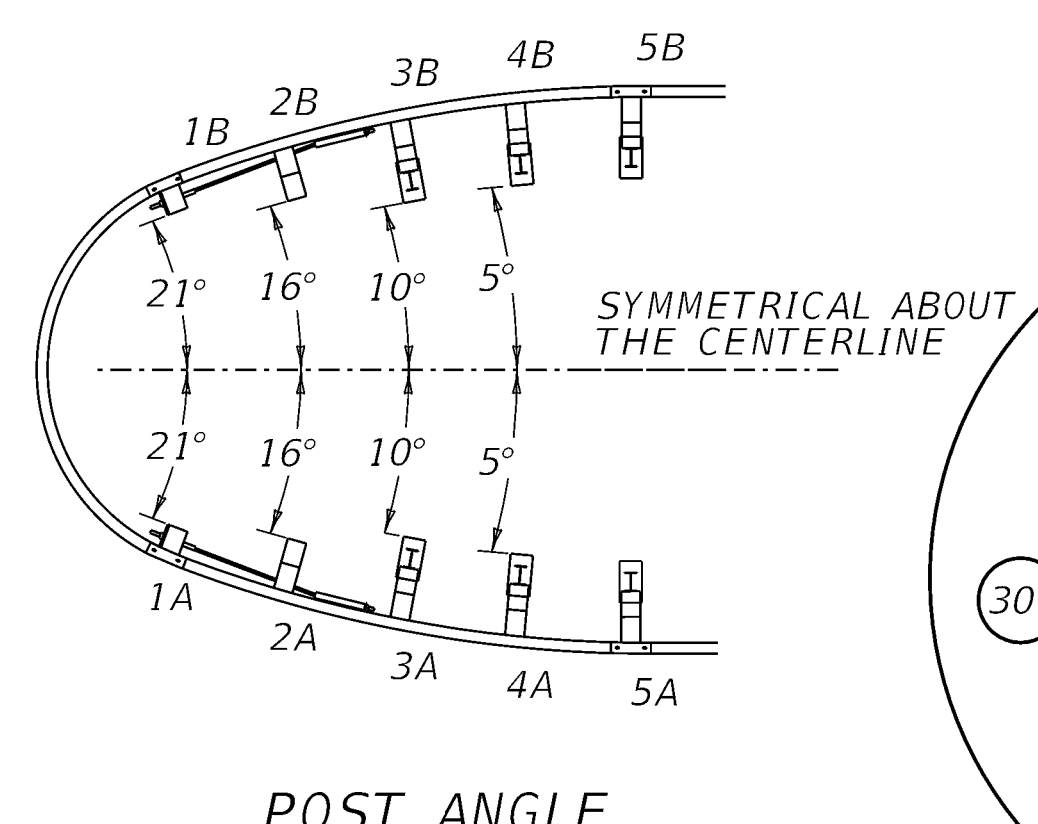
SYMMETRICAL BULLNOSE POST COORDINATES			
POST NUMBER	X (301)	Y (301)	ANGLE OF POST (FLANGE FACE) (303)
13A	0	0	0
12A	6'-3"	0	0
11A	12'-6"	0	0
10A	18'-9"	0	0
9A	25'-0"	0	0
8A	31'-3"	0'-8"	0
7A	37'-6"	0'-8"	0
6A	40'-7 1/2"	0'-8"	0
5A	43'-9"	0'-8"	0
4A	46'-9 1/4"	0'-10"	5
3A	49'-8 3/8"	1'-3 1/4"	10
2A	52'-9 1/4"	1'-5 1/8"	16
1A	55'-10 1/2"	1'-9 1/4"	21
1B	55'-10 1/2"	10'-7 3/8"	21
2B	52'-9 1/4"	10'-11 5/8"	16
3B	49'-8 3/8"	11'-1 3/8"	10
4B	46'-9 1/4"	11'-6 5/8"	5
5B	43'-9"	11'-8 3/8"	0
6B	40'-7 1/2"	11'-8 3/8"	0
7B	37'-6"	11'-8 3/8"	0
8B	31'-3"	11'-8 3/8"	0
9B	25'-0"	12'-4 5/8"	0
10B	18'-9"	12'-4 5/8"	0
11B	12'-6"	12'-4 5/8"	0
12B	6'-3"	12'-4 5/8"	0
13B	0	12'-4 5/8"	0

ASYMMETRICAL BULLNOSE POST COORDINATES			
POST NUMBER	X (301)	Y (301)	ANGLE OF POST (FLANGE FACE) (304)
13A	0	0	3.8
12A	6'-2 7/8"	0'-5"	3.8
11A	12'-5 3/4"	0'-10"	3.8
10A	18'-8 1/2"	1'-3"	3.8
9A	24'-11 3/8"	1'-8"	3.8
8A	31'-1 5/8"	2'-9"	3.8
7A	37'-4 1/2"	3'-1 7/8"	3.8
6A	40'-5 7/8"	3'-4 3/8"	3.8
5A	43'-8 1/2"	3'-7"	0
4A	46'-8 1/4"	3'-8 3/8"	5
3A	49'-8 1/4"	4'-1 1/2"	10
2A	52'-8 3/4"	4'-2 5/8"	16
1A	55'-10 1/8"	4'-6 7/8"	21
1B	55'-10 1/8"	13'-7 3/4"	21
2B	52'-8 3/8"	13'-6 5/8"	10.9
3B	49'-6"	13'-7"	10.9
4B	46'-5 1/8"	14'-2"	10.9
5B	43'-4 3/8"	14'-9 1/8"	10.9
6B	40'-3 1/2"	15'-4 1/4"	10.9
7B	37'-2 3/4"	15'-11 3/8"	10.9
8B	31'-1"	17'-1 1/2"	10.9
9B	25'-0 7/8"	18'-11 1/2"	10.9
10B	18'-11 1/4"	20'-1 3/4"	10.9
11B	12'-9 3/8"	21'-3 7/8"	10.9
12B	6'-7 3/4"	22'-6"	10.9
13B	0'-6"	23'-8 1/4"	10.9



~ NOTES ~

- (300) MINIMUM DISTANCE REQUIREMENT: THE LENGTH FROM POST 5 TO THE FRONT OF THE FIXED OBJECT OR OBSTACLE MUST BE A MINIMUM OF 50'.
- (301) DIMENSIONS ARE MEASURED TO THE CENTER OF GUARDRAIL POSTS. REFER TO DETAIL A FOR MORE INFORMATION. USE THE STATION AND OFFSET FOR POST 13A, AND REFER TO THE COORDINATES PROVIDED IN THE TABLE TO LAYOUT THE CENTER OF THE BULLNOSE GUARDRAIL POSTS.
- 302 ON THE PLAN SHEETS, THE DESIGNER MUST INCLUDE THE STATION AND OFFSET MEASUREMENTS FOR THE CENTER OF THE GUARDRAIL POSTS 1 THROUGH 13 FOR THE BULLNOSE.
- (303) FOR THE SYMMETRIC BULLNOSE, LAYOUT AND ANGLE DIMENSIONS FOR POST 1-5 ARE MEASURED FROM THE CENTER OF THE POSTS ON SIDE A TO THE CENTER OF POSTS ON SIDE B.
- (304) FOR THE ASYMMETRIC BULLNOSE, LAYOUT AND ANGLE DIMENSIONS FOR POST 1-5 ARE MEASURED FROM THE CENTER OF THE POSTS TO THE SYMMETRY LINE OF SLOTTED THRIE BEAM RAIL E2.



REVISION DATE: 2.24.2025
REVISION NUMBER: 1

SUBMITTED: 03-03-2025
DATE: _____
DIVISION DIRECTOR: *W. J. Sipes*
STATE HIGHWAY ENGINEER: _____
APPROVED: _____

BARRIERS