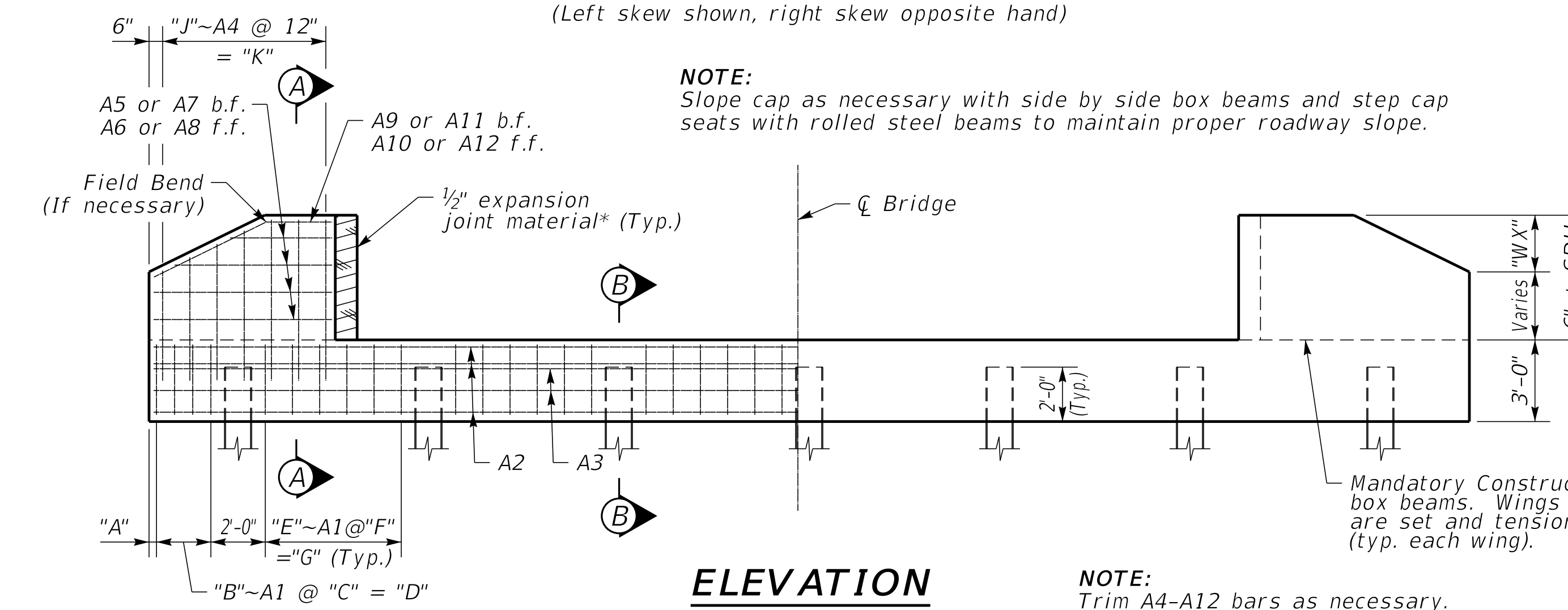
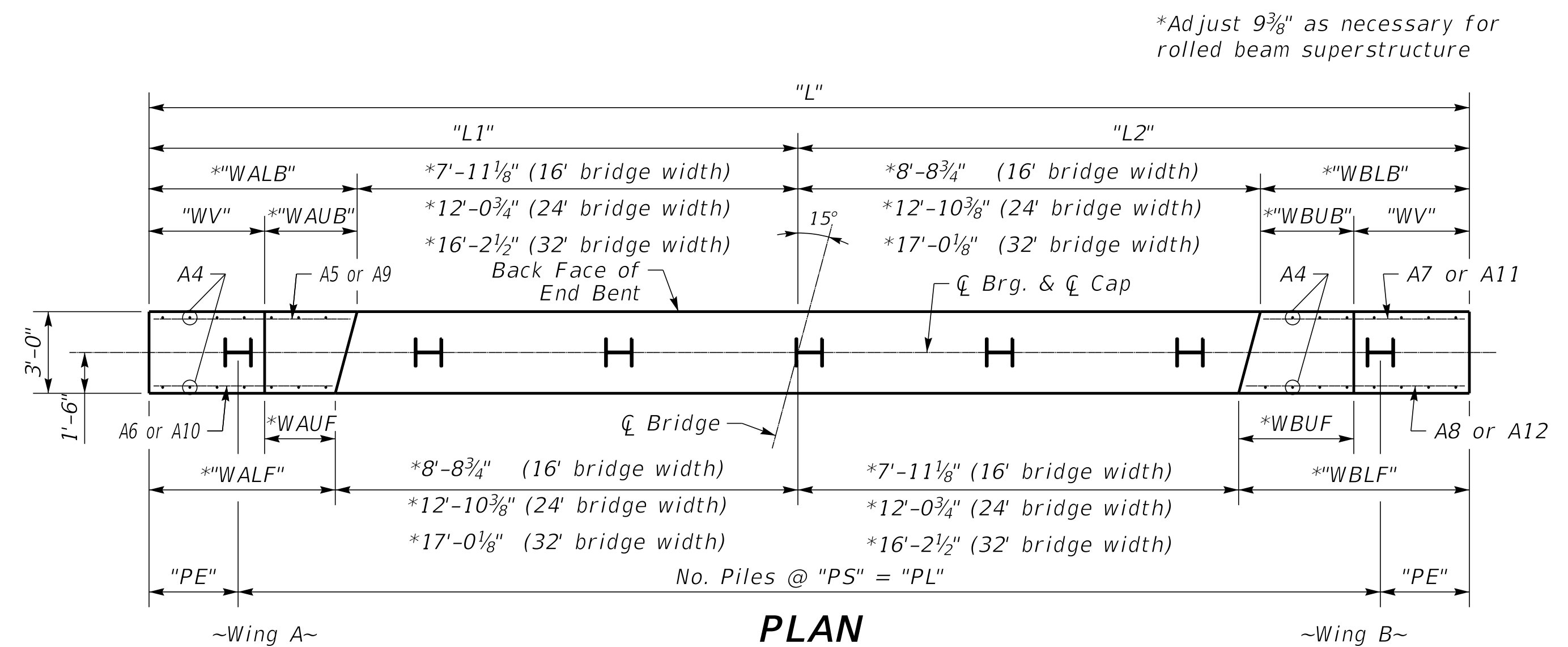
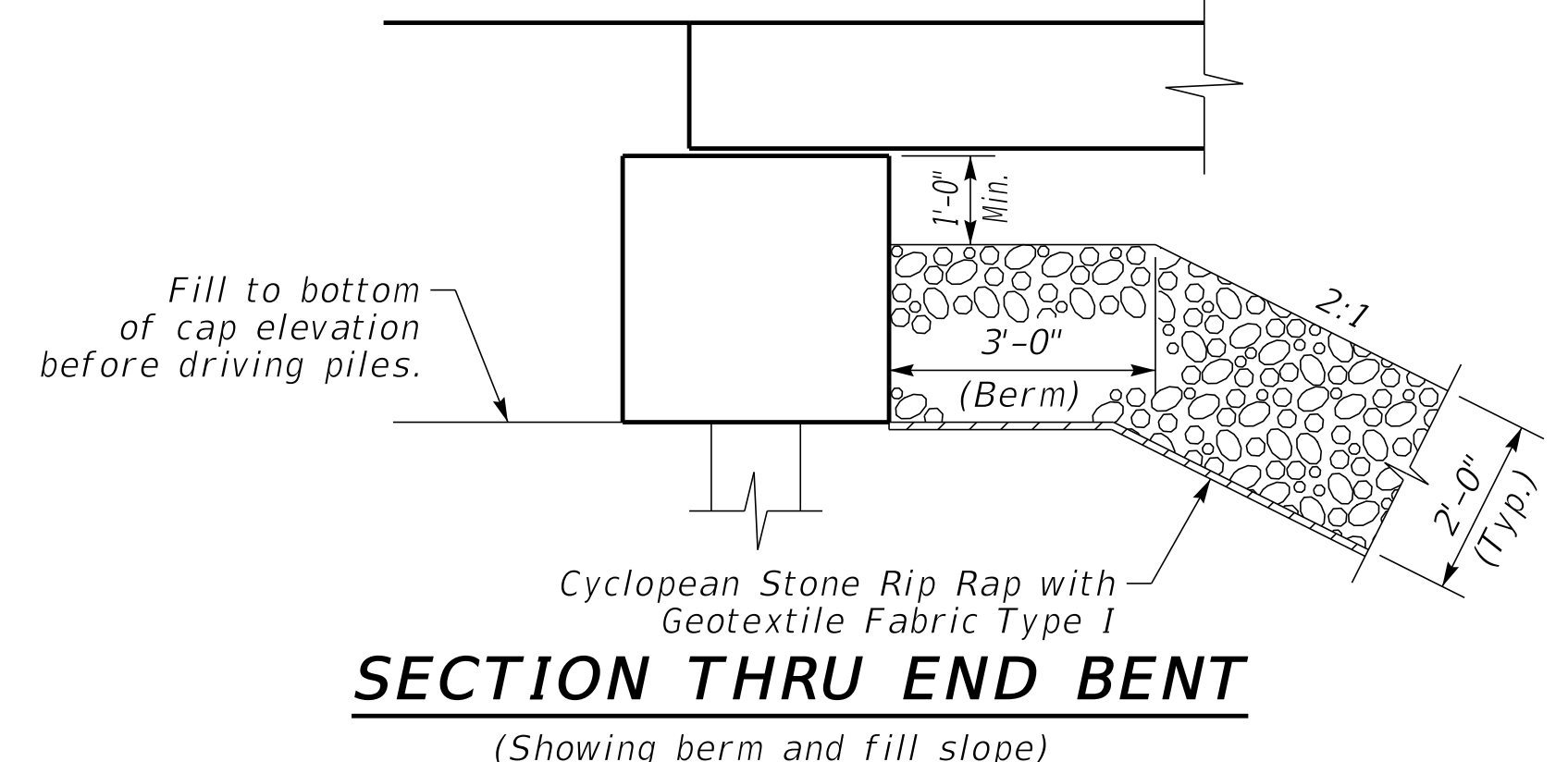


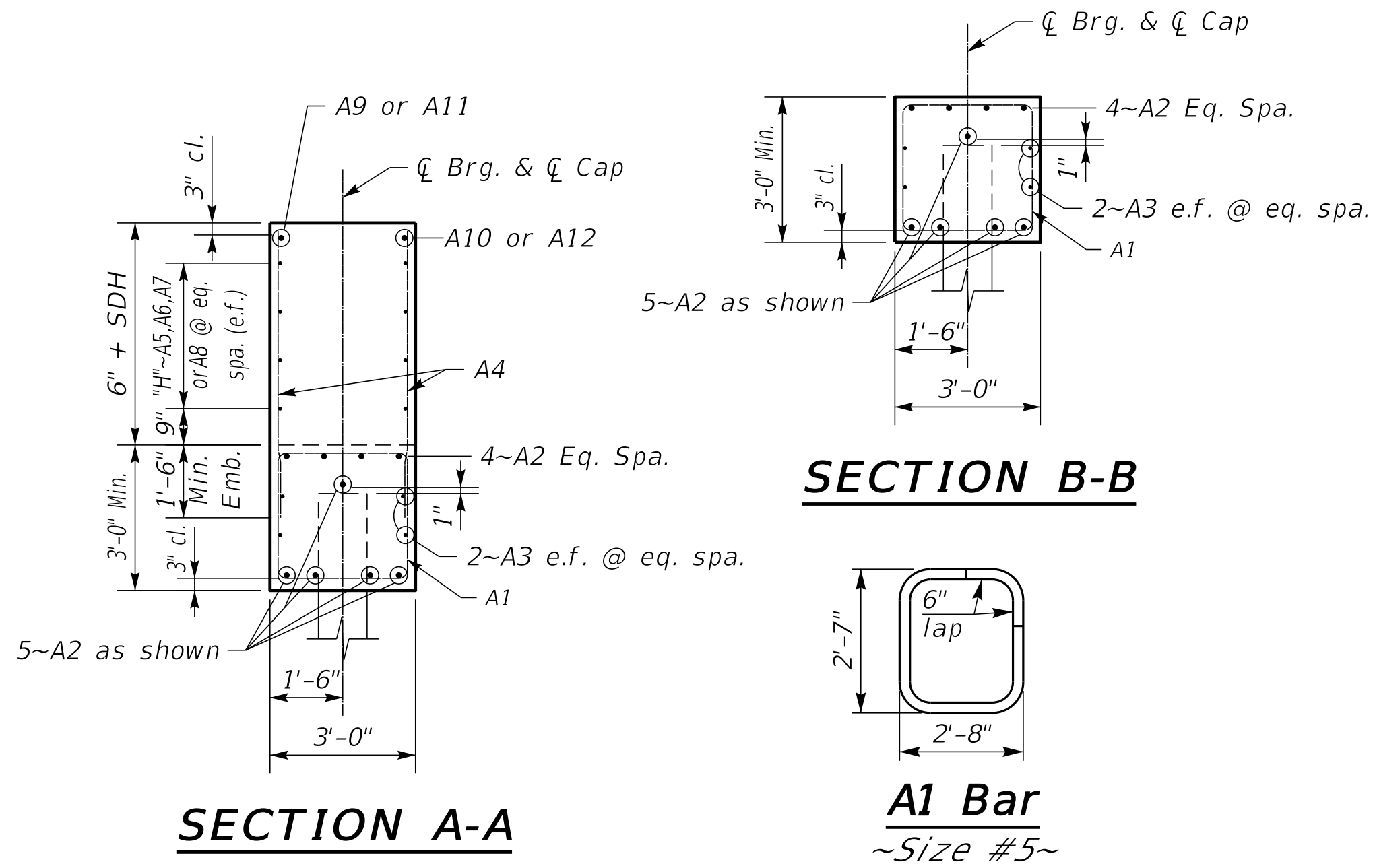
SUPERSTRUCTURE HEIGHT SDH=Beam Height +pad height +(haunch+slab) [if applicable]		CAP BILL OF REINFORCEMENT															WING BILL OF REINFORCEMENT																								
		16'-0" BRIDGE WIDTH					24'-0" BRIDGE WIDTH					32'-0" BRIDGE WIDTH					WING A					WING B																			
		MARK	TYPE	NO.	SIZE	LENGTH	MARK	TYPE	NO.	SIZE	LENGTH	MARK	TYPE	NO.	SIZE	LENGTH	MARK	TYPE	NO.	SIZE	LENGTH	MARK	TYPE	NO.	SIZE	LENGTH	MARK	TYPE	NO.	SIZE	LENGTH										
H1	12" ≤SDH≤27"	A1e	14s	22	5	11-0	A1e	14s	29	5	11-0	A1e	14s	36	5	11-0	A4e	Str.	14	5	4-0	A7e	Str.	2	5	3-4	A10e	Str.	1	6	2-6	A11e	Str.	1	6	3-4					
		A2e	Str.	9	8	23-7	A2e	Str.	9	8	31-11	A2e	Str.	9	8	40-2	A5e	Str.	2	5	3-2	A8e	Str.	2	5	4-1	A12e	Str.	1	6	4-1	A12e	Str.	1	6	4-1					
		A3e	Str.	4	5	23-7	A3e	Str.	4	5	31-11	A3e	Str.	4	5	40-2	A6e	Str.	2	5	2-6	A9e	Str.	1	6	3-2	A12e	Str.	1	6	4-1	A12e	Str.	1	6	3-11					
H2	27" <SDH≤35"	A1e	14s	24	5	11-0	A1e	14s	34	5	11-0	A1e	14s	41	5	11-0	A4e	Str.	20	5	4-8	A7e	Str.	3	5	4-8	A10e	Str.	1	6	3-11	A11e	Str.	1	6	4-8	A12e	Str.	1	6	5-4
		A2e	Str.	9	8	26-4	A2e	Str.	9	8	34-8	A2e	Str.	9	8	42-11	A5e	Str.	3	5	4-7	A8e	Str.	3	5	5-4	A11e	Str.	1	6	4-8	A12e	Str.	1	6	5-4					
		A3e	Str.	4	5	26-4	A3e	Str.	4	5	34-8	A3e	Str.	4	5	42-11	A6e	Str.	3	5	3-11	A9e	Str.	1	6	4-7	A12e	Str.	1	6	5-4										
H3	35" <SDH≤50"	A1e	14s	29	5	11-0	A1e	14s	36	5	11-0	A1e	14s	44	5	11-0	A4e	Str.	30	5	5-11	A7e	Str.	4	5	7-4	A10e	Str.	1	6	7-0	A11e	Str.	1	6	7-10	A12e	Str.	1	6	8-6
		A2e	Str.	9	8	31-7	A2e	Str.	9	8	39-11	A2e	Str.	9	8	48-2	A5e	Str.	4	5	7-2	A8e	Str.	4	5	8-0	A11e	Str.	1	6	7-10	A12e	Str.	1	6	8-6					
		A3e	Str.	4	5	31-7	A3e	Str.	4	5	39-11	A3e	Str.	4	5	48-2	A6e	Str.	4	5	6-6	A9e	Str.	1	6	7-8	A12e	Str.	1	6	8-6										

BRIDGE WIDTH	PILE LOAD SIZE TONS	DIMENSIONS															WING A										WING B										QUANTITIES						
		PILES					Geometry					Reinforcement					Back Face					Front Face					Back Face					Front Face					CONC. (C.Y.)	STEEL (LBS.)					
		NO.	PE	PS	PL	L	L1	L2	A	B	C	D	E	F	G	H	WALB	WAUB	WV	WX	J	K	WALF	WAUF	WV	WX	J	K	WBLB	WBUB	WV	WX	J	K	WBLF	WBUF	WV	WX	J	K			
16	H1	95	3	3'-11 1/8"	8'-0"	16'-0"	23'-11 3/4"	11'-6 7/8"	12'-4 7/8"	2 7/8"	4	11"	2'-9"	7	12"	6'-0"	2	3'-7 1/8"	0	0	0	3	2'-0"	2'-10 1/8"	0	0	0	3	2'-0"	3'-8 1/8"	0	0	0	4	3'-0"	4'-5 1/8"	0	0	0	4	3'-0"	10.2	1024
	H2	87	4	2'-10 3/8"	7'-0"	21'-0"	26'-8 3/4"	12'-11 1/8"	13'-8 7/8"	4 3/8"	3	9"	1'-6"	6	12"	5'-0"	3	5'-0 1/8"	0	0	0	5	4'-0"	4'-3 1/8"	0	0	0	4	3'-0"	5'-0 1/8"	0	0	0	5	4'-0"	5'-9 1/8"	0	0	0	6	5'-0"	12.6	1203
	H3	108	4	3'-11 1/8"	8'-0"	24'-0"	31'-11 3/4"	15'-6 7/8"	16'-4 7/8"	2 7/8"	4	11"	2'-9"	7	12"	6'-0"	4	7'-7 1/8"	3'-4 7/8"	4'-3"	2'-1"	7	6'-0"	6'-10 1/8"	2'-7 1/8"	4'-3"	2'-1"	7	6'-0"	7'-8 1/8"	3'-5 1/8"	4'-3"	2'-1"	8	7'-0"	8'-5 1/8"	4'-2 7/8"	4'-3"	2'-1"	8	7'-0"	17.5	1578
24	H1	99	4	4'-1 1/8"	8'-0"	24'-0"	32'-3 1/4"	15'-8 3/8"	16'-6 3/8"	4 3/8"	4	11"	2'-9"	7	12"	6'-0"	2	3'-7 1/8"	0	0	0	3	2'-0"	2'-10 1/8"	0	0	0	3	2'-0"	3'-8 1/8"	0	0	0	4	3'-0"	4'-5 1/8"	0	0	0	4	3'-0"	12.9	1340
	H2	98	5	2'-6 1/8"	7'-6"	30'-0"	35'-0 1/4"	17'-1 3/8"	17'-10 3/8"	4 3/8"	3	7"	1'-2"	7	11"	5'-6"	3	5'-0 1/8"	0	0	0	5	4'-0"	4'-3 1/8"	0	0	0	4	3'-0"	5'-0 1/8"	0	0	0	5	4'-0"	5'-9 1/8"	0	0	0	6	5'-0"	15.4	1553
	H3	123	5	4'-1 1/8"	8'-0"	32'-0"	40'-3 1/4"	19'-8 3/8"	20'-6 3/8"	4 3/8"	4	11"	2'-9"	7	12"	6'-0"	4	7'-7 1/8"	3'-4 7/8"	4'-3"	2'-1"	7	6'-0"	6'-10 1/8"	2'-7 1/8"	4'-3"	2'-1"	7	6'-0"	7'-8 1/8"	3'-5 1/8"	4'-3"	2'-1"	8	7'-0"	8'-5 1/8"	4'-2 7/8"	4'-3"	2'-1"	8	7'-0"	20.2	1887
32	H1	87	6	2'-9 1/4"	7'-0"	35'-0"	40'-6 1/2"	19'-10 1/4"	20'-8 1/4"	3 1/4"	3	9"	1'-6"	6	12"	5'-0"	2	3'-7 1/8"	0	0	0	3	2'-0"	2'-10 1/8"	0	0	0	3	2'-0"	3'-8 1/8"	0	0	0	4	3'-0"	4'-5 1/8"	0	0	0	4	3'-0"	15.7	1653
	H2	108	6	2'-10 3/4"	7'-6"	37'-6"	43'-3 1/2"	21'-3 1/4"	22'-0 1/4"	2 3/4"	3	10"	1'-8"	7	11"	5'-6"	3	5'-0 1/8"	0	0	0	5	4'-0"	4'-3 1/8"	0	0	0	4	3'-0"	5'-0 1/8"	0	0	0	5	4'-0"	5'-9 1/8"	0	0	0	6	5'-0"	18.2	1866
	H3	115	7	3'-3 1/4"	7'-0"	42'-0"	48'-6 1/2"	23'-10 1/4"	24'-8 1/4"	3 1/4"	4	8"	2'-0"	6	12"	5'-0"	4	7'-7 1/8"	3'-4 7/8"	4'-3"	2'-1"	7	6'-0"	6'-10 1/8"	2'-7 1/8"	4'-3"	2'-1"	7	6'-0"	7'-8 1/8"	3'-5 1/8"	4'-3"	2'-1"	8	7'-0"	8'-5 1/8"	4'-2 7/8"	4'-3"	2'-1"	8	7'-0"	23.0	2219

- NOTES:**
- 1) Conform to KYTC, Standard Specifications, Current Edition.
 - 2) Concrete to be Class "A", 3500 psi.
 - 3) Rebar to be epoxy coated A615, Grade 60.
 - 4) Maintain 2" clear cover to reinforcement unless otherwise noted.
 - 5) End Bents are designed for the maximum span of the following steel and concrete beams as shown in the current standards:
 H1 - B12, CB12, B17, CB17, B21 or rolled steel beams up to 16" nominal depth.
 H2 - CB21, B27, CB27, B33 or rolled steel beams up to 24" nominal depth.
 H3 - CB33, B42, CB42 or rolled steel beams up to 36" nominal depth.
 - 6) Piles may be HP12x53 or 16" Steel Pipes with 1/2" wall thickness.
 - 7) Piles driven to rock must be driven to Refusal. Friction Piles must be driven to (Pile Load/0.4) using the Gates Method.
 - 8) Pile load given is Factored Strength Load.
 - 9) Piles must be driven 10' into existing ground or to refusal on bedrock. Piles at wet crossings must be driven to 10' below stream bed or to refusal on bedrock. A minimum pile length of 10' is required in all circumstances.
 - 10) Contractor shall provide a hammer capable of driving the piling to refusal or capacity without encountering excessive blow counts or damaging the pile. Contractor shall be responsible for all damaged piling.



*Expansion Joint Material:
 AASHTO M153
 Type-I Sponge Rubber
 Type-II Cork permitted with contractor provided documentation that the Build America Buy America requirements are satisfied.



A1 Bar
~Size #5~

SUBMITTED: *Michael Cox* 10/25/2024
 DIVISION DIRECTOR DATE